

Product Overview



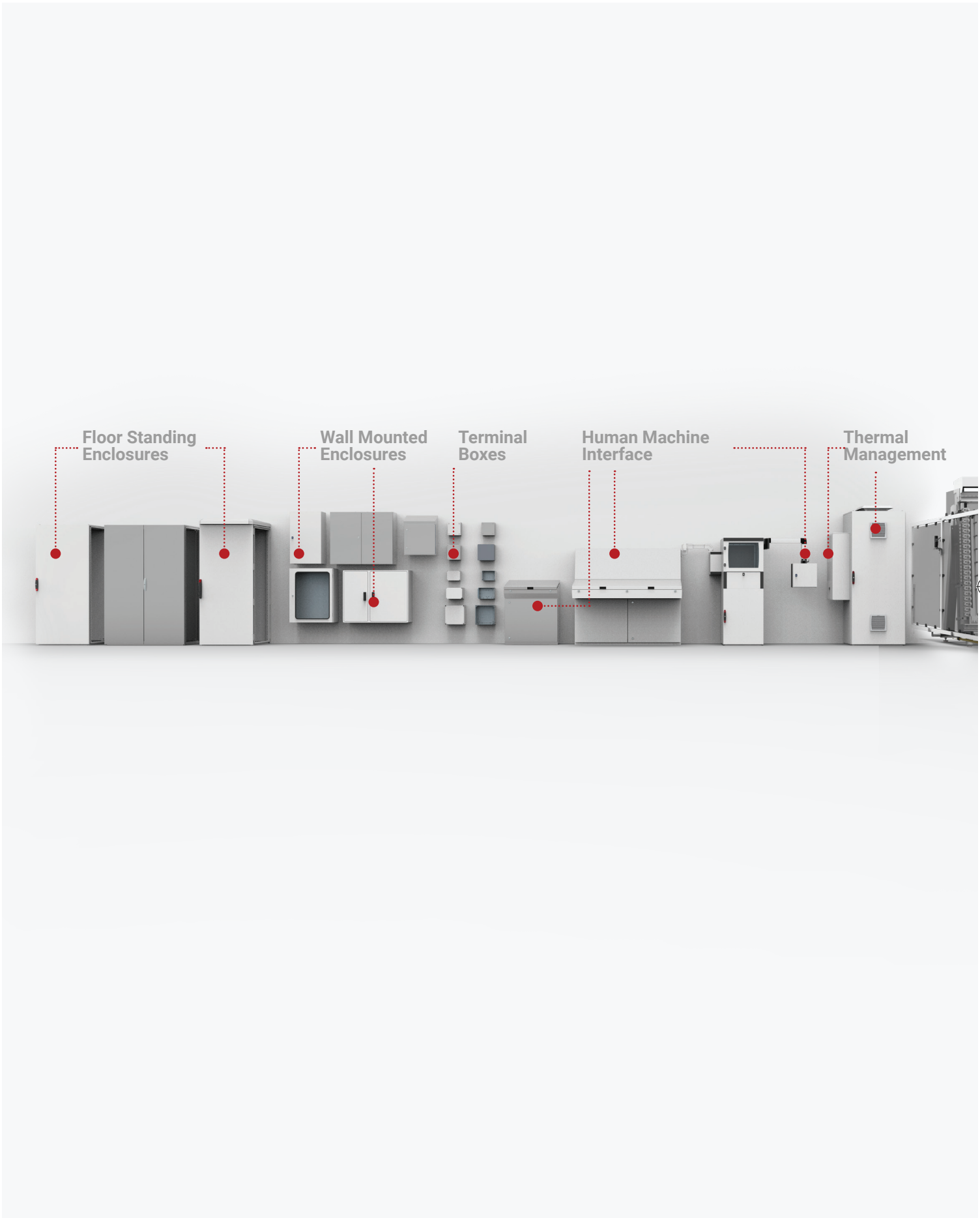
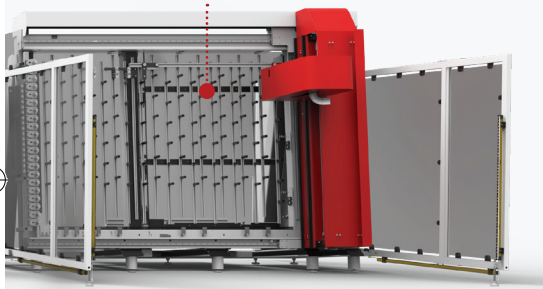


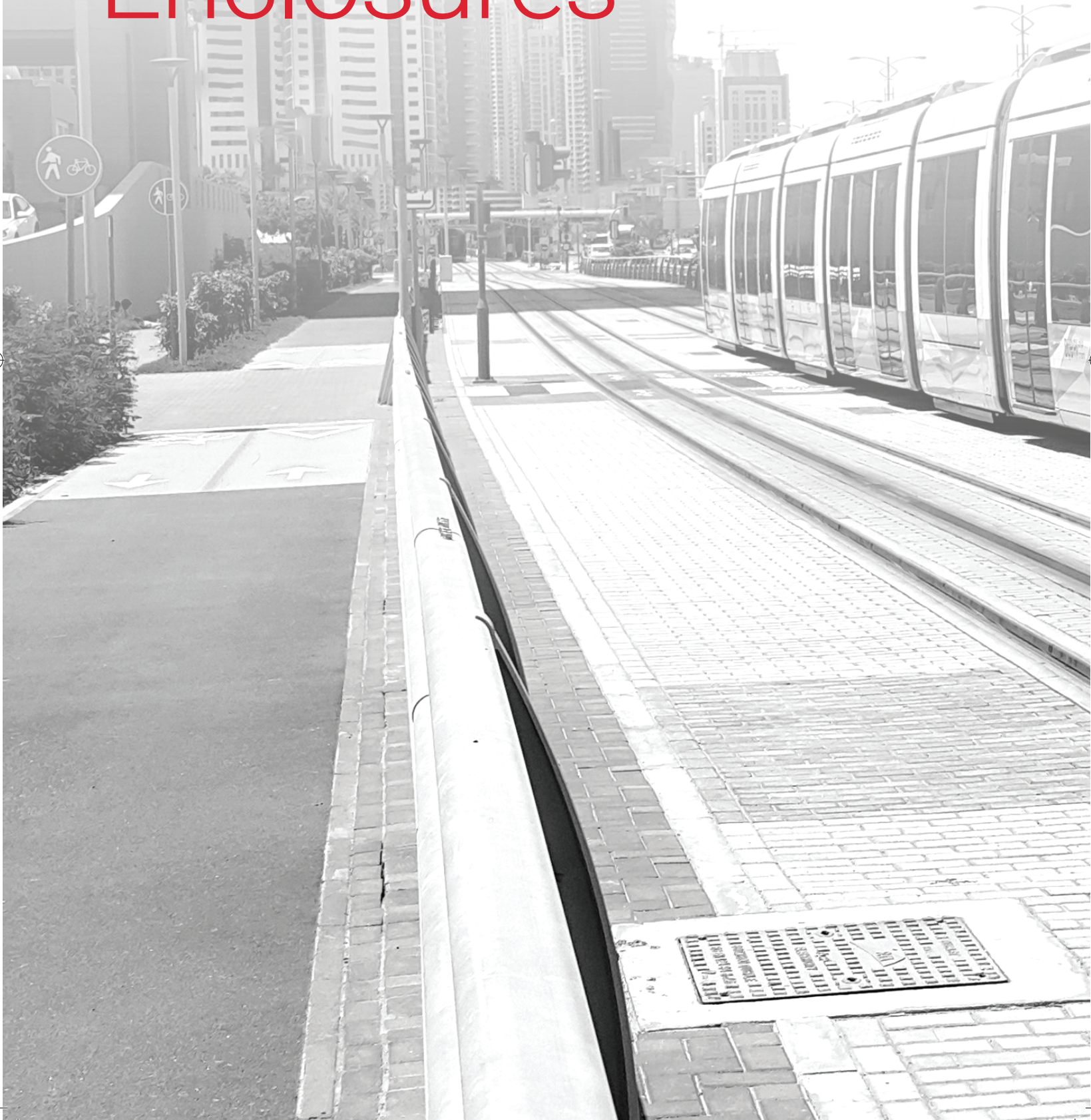
Table of contents

Floor Standing Enclosures.....	4
Wall Mounted Enclosures	16
Terminal Boxes	28
Human Machine Interface.....	36
Thermal Management.....	42
Panel Shop Automation	48

Panel Shop
Automation



Floor Standing Enclosures





Floor Standing Enclosures

TAKEYO



MILD STEEL

GALVANISED STEEL

compact single door	compact double door	compact single door	combinable single door	combinable double door	combinable single door	combinable flange mount	combinable 19"	EMC
IP 55 TYPE 12	IP 55 TYPE 12	IP 66 TYPE 4, 12	IP 55 TYPE 12	IP 55 TYPE 12	IP 66 TYPE 4, 12	IP 55 TYPE 12	IP 55 TYPE 12	IP 54 TYPE 12
IK 10	IK 10	IK 10	IK 10	IK 10	IK 10	IK 10	IK 10	IK 10
H: 1200 – 2000 W: 600 – 1000 D: 300 – 500	H: 1200 – 2000 W: 1000 – 1600 D: 300 – 500	H: 1800 – 2000 W: 600 – 800 D: 400 – 800	H: 1200 – 2200 W: 400 – 1000 D: 400 – 800	H: 1200 – 2200 W: 800 – 1600 D: 400 – 800	H: 2000 – 2200 W: 800 D: 600 – 800	H: 1800 – 2000 W: 800 – 1000 D: 400 – 600	H: 1100 – 2200 W: 600 – 800 D: 600 – 800	H: 2000 W: 800 D: 600 – 800



COMPACT



COMBINABLE

OUR PICK!



STAINLESS STEEL

ALUMINIUM

compact single door	compact double door	combinable single door	combinable single door	combinable double door	compact single wall	compact double wall	combinable double wall
IP 66 TYPE 4X, 12	IP 55 IP 66 TYPE 12 TYPE 4X, 12	IP 55 TYPE 12	IP 66 TYPE 4X, 12	IP 55 TYPE 12	IP 66 TYPE 4X, 12	IP 66 TYPE 4X, 12	IP 66 TYPE 4X, 12
IK 10	IK 10	IK 10	IK 10	IK 10	IK 10	IK 10	IK 10
H: 1400 – 2000 W: 600 – 1000 D: 400	H: 1200 – 2000 W: 1200 – 1600 D: 400	H: 1800 – 2000 W: 600 – 1000 D: 500 – 600	H: 2000 – 2200 W: 800 D: 600 – 800	H: 1800 – 2000 W: 1000 – 1200 D: 500 – 600	H: 1200 – 1400 W: 600 – 1800 D: 400 – 600	H: 1200 – 1400 W: 600 – 1800 D: 500 – 600	H: 1600 – 2000 W: 600 – 800 D: 600



Floor Standing Enclosures

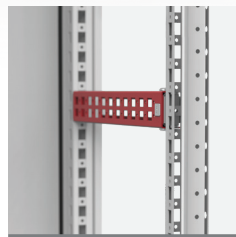
FULL ACCESSORIE



Wide range of standard accessories for virtually any application



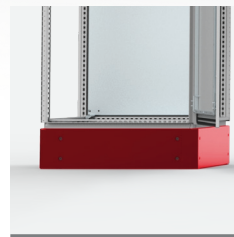
MOUNTING PLATES



PROFILES



19"



FIXATION



DOORS

ES COMPATIBILITY



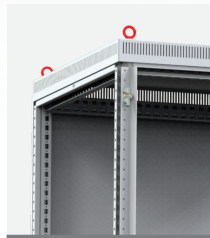
LOCKING SYSTEM



ROOFS, BOTTOM PLATES



CABLE MANAGEMENT



LIFTING



EARTHING



LIGHTS

Floor Standing Enclosures



**14 MINUTES
SAVED**

for each two bayed enclosures
with the below accessories

10 x BAYING BRACKETS

2 x SIDE PANELS

2 x MOUNTING PLATES

1 x FILLER PLATE

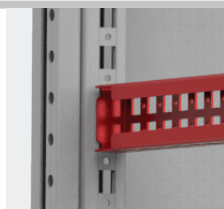
+ x PROFILES



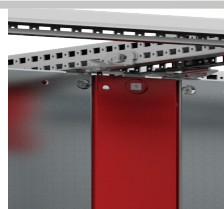
FAST ASSEMBLY



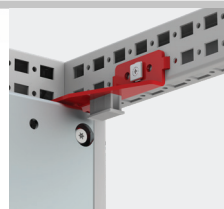
Click-in
baying brackets



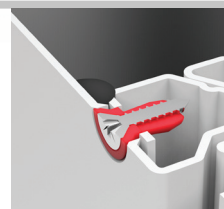
Click-in
mounting profiles



Click-in
filler plate



Mounting plate
fixation bracket



Click-in
side panel



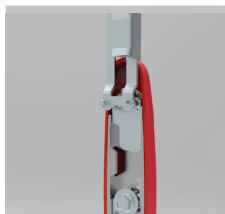
Side panel
hanging



OPTIMUM PROTECTION



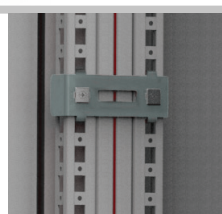
Two pins hinge



Locking system



Low water absorption gasket



IP 66 baying kit

APPEALING DESIGN



Lock covers and lifting handles

Floor Standing Enclosures

Height	Width	Depth	mild steel								combinable flange mount	combinable 19"
			compact single door with MP *	compact single door with high protection	compact double door with MP *	combinable single door with MP *	combinable single door cable enclosure	combinable single door with high protection	combinable double door with MP *			
1100	600	600										MCI11066R5
1200	600	400	MKS12064R5	MKS18064HP								
1200	600	500				MCS12065R5						
1200	800	400	MKS12084R5	MKS18084HP								
1200	800	500				MCS12085R5						
1200	1200	400			MKD12124R5							
1200	1200	500							MCD12125R5			
1400	600	300	MKS14063R5									
1400	600	400	MKS14064R5									
1400	600	500				MCS14065R5						
1400	800	300	MKS14083R5									
1400	800	400	MKS14084R5									
1400	800	500				MCS14085R5						
1400	800	600										MCI14086R5
1400	1000	300			MKD14103R5							
1400	1000	400			MKD14104R5							
1400	1200	300			MKD14123R5							
1400	1200	400			MKD14124R5							
1400	1200	500							MCD14125R5			
1600	600	300	MKS16063R5									
1600	600	400	MKS16064R5									
1600	600	500				MCS16065R5						
1600	600	600										MCI16066R5
1600	800	300	MKS16083R5									
1600	800	400	MKS16084R5									
1600	800	500	MKS16085R5			MCS16085R5						
1600	1000	400	MKS16104R5									
1600	1000	500	MKS16105R5									
1600	1200	400			MKD16124R5							
1600	1200	500			MKD16125R5				MCD16125R5			
1800	400	400					MCS18044R5					
1800	400	500					MCS18045R5					
1800	400	600					MCS18046R5					
1800	500	500				MCS18055R5						
1800	600	400	MKS18064R5			MCS18064R5						
1800	600	500				MCS18065R5						
1800	600	600				MCS18066R5						MCI18066R5
1800	600	800										MCI18068R5
1800	800	400	MKS18084R5			MCS18084R5				MCF18084R5		
1800	800	500	MKS18085R5			MCS18085R5			MCD18085R5	MCF18085R5		
1800	800	600				MCS18086R5			MCD18086R5			MCI18086R5
1800	1000	400	MKS18104R5			MCS18104R5			MCD18104R5			
1800	1000	500				MCS18105R5			MCD18105R5	MCF18105R5		
1800	1000	600				MCS18106R5						
1800	1200	400			MKD18124R5				MCD18124R5			
1800	1200	500			MKD18125R5				MCD18125R5			
1800	1200	600							MCD18126R5			
1800	1600	400			MKD18164R5				MCD18164R5			
1800	1600	500			MKD18165R5							

* Add PE to the part number, if the mounting plate is not required.

stainless steel						galvanised steel	Height	Width	Depth
compact single door stainless steel 304 ** with MP	compact double door stainless steel 304 ** with MP	compact double door stainless steel 304 ** TYPE 4X with MP	combinable single door stainless steel 304 ** with MP	combinable double door stainless steel 304 ** with MP	combinable single door with high protection	combinable single door with MP EMC			
							1100	600	600
							1200	600	400
							1200	800	400
	EKDS12124	EKDS12124-4X					1200	1200	400
							1400	600	300
							1400	600	400
							1400	800	300
EKSS14084							1400	800	400
							1400	800	600
							1400	1000	300
							1400	1000	400
							1400	1200	300
							1400	1200	400
							1600	600	300
EKSS16064							1600	600	400
							1600	600	600
							1600	800	300
EKSS16084							1600	800	400
							1600	800	500
EKSS16104							1600	1000	400
							1600	1000	500
	EKDS16124	EKDS16124-4X					1600	1200	400
							1600	1200	500
							1800	400	400
							1800	400	500
							1800	400	600
							1800	500	500
EKSS18064							1800	600	400
				MCSS18065			1800	600	500
							1800	600	600
							1800	600	800
EKSS18084							1800	800	400
				MCSS18085			1800	800	500
							1800	800	600
EKSS18104							1800	1000	400
				MCSS18105	MCDS18105		1800	1000	500
							1800	1000	600
	EKDS18124	EKDS18124-4X					1800	1200	400
					MCDS18125		1800	1200	500
							1800	1200	600
	EKDS18164	EKDS18164-4X					1800	1600	400
							1800	1600	500

** Add -316 to the item number, if stainless steel 316L is required.

Floor Standing Enclosures

Height	Width	Depth	mild steel								
			compact single door with MP *	compact single door with high protection	compact double door with MP *	combinable single door with MP *	combinable single door cable enclosure	combinable single door with high protection	combinable double door with MP *	combinable flange mount	combinable 19"
2000	400	400					MCS20044R5				
2000	400	500					MCS20045R5				
2000	400	600					MCS20046R5				
2000	400	800					MCS20048R5				
2000	500	500				MCS20055R5					
2000	600	400	MKS20064R5			MCS20064R5					
2000	600	500				MCS20065R5					
2000	600	600				MCS20066R5					MCI20066R5
2000	600	800				MCS20068R5					MCI20068R5
2000	800	400	MKS20084R5			MCS20084R5					
2000	800	500	MKS20085R5			MCS20085R5			MCD20085R5	MCF20085R5	
2000	800	600		MKS20086HP		MCS20086R5		MCS20086HP		MCF20086R5	MCI20086R5
2000	800	800		MKS20088HP		MCS20088R5					MCI20088R5
2000	1000	400	MKS20104R5			MCS20104R5			MCD20104R5		
2000	1000	500	MKS20105R5			MCS20105R5			MCD20105R5	MCF20105R5	
2000	1000	600				MCS20106R5			MCD20106R5		
2000	1000	800				MCS20108R5			MCD20108R5		
2000	1200	400			MKD20124R5				MCD20124R5		
2000	1200	500			MKD20125R5				MCD20125R5		
2000	1200	600							MCD20126R5		
2000	1200	800							MCD20128R5		
2000	1600	400			MKD20164R5				MCD20164R5		
2000	1600	500			MKD20165R5				MCD20165R5		
2000	1600	600							MCD20166R5		
2200	600	600				MCS22066R5					MCI22066R5
2200	600	800				MCS22068R5					MCI22068R5
2200	800	600				MCS22086R5					MCI22086R5
2200	800	800				MCS22088R5		MCS22088HP			MCI22088R5
2200	1000	600							MCD22106R5		
2200	1200	600							MCD22126R5		

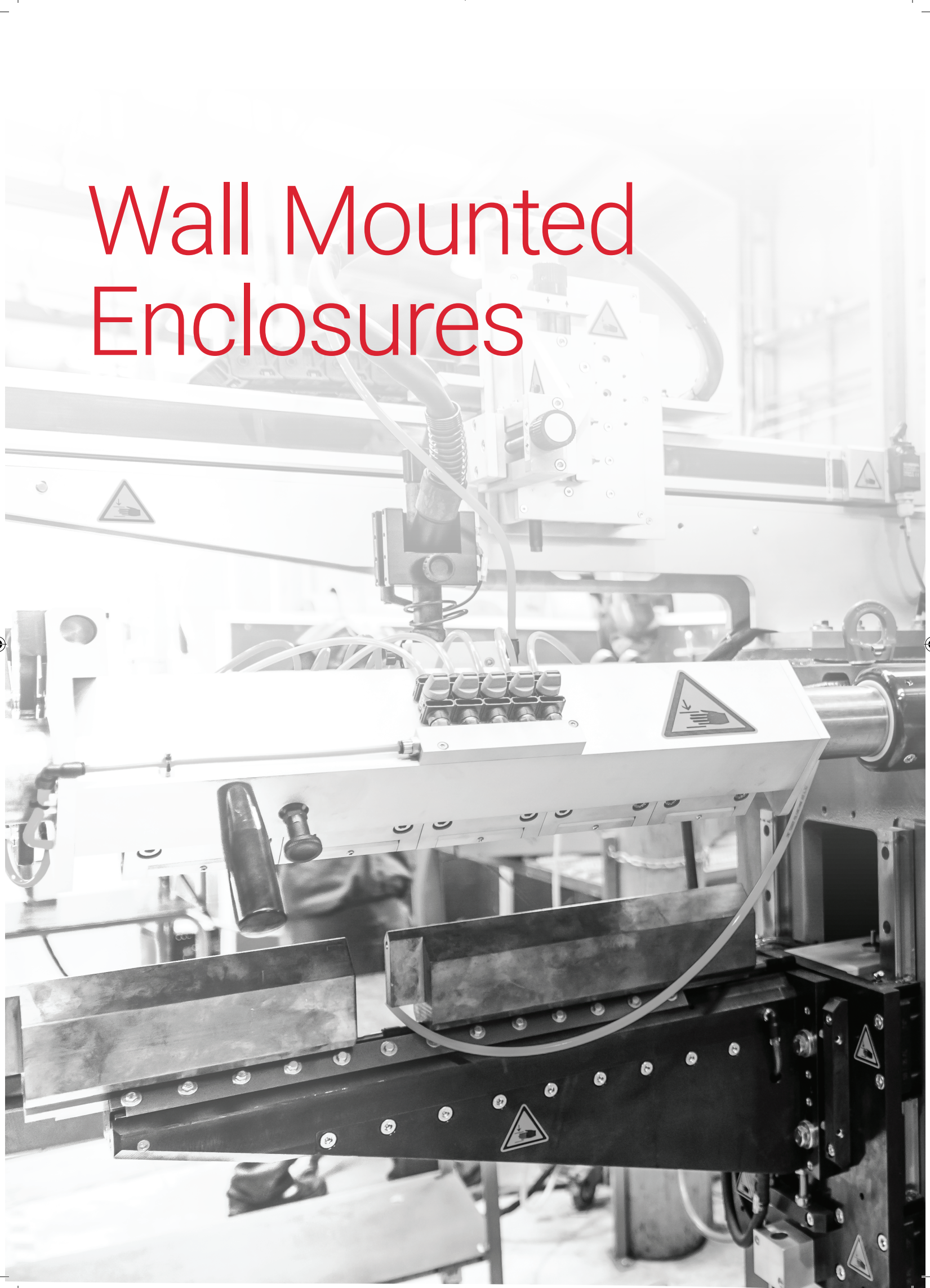
* Add PE to the part number, if the mounting plate is not required.

Height	Width	Depth	aluminium		
			compact single wall without MP	compact double wall without MP	combinable double wall without MP
1200	600	400	EKOM12064-SW		
1200	600	600	EKOM12066-SW	EKOM12066	
1200	800	400	EKOM12084-SW		
1200	800	600	EKOM12086-SW	EKOM12086	
1200	1200	400	EKOM12124-SW		
1200	1200	600		EKOM12126	
1400	600	600		EKOM14066	
1400	800	600		EKOM14086	
1400	1800	400	EKOM14184-SW		
1400	1800	500		EKOM14185	
1600	600	600			ECOM16066
1600	800	600			ECOM16086
1800	600	600			ECOM18066
1800	800	600			ECOM18086
2000	600	600			ECOM20066
2000	800	600			ECOM20086

stainless steel						galvanised steel	Height	Width	Depth	
compact single door stainless steel 304 ** with MP	compact double door stainless steel 304 ** with MP	compact double door stainless steel 304 ** TYPE 4X with MP	combinable single door stainless steel 304 ** with MP	combinable double door stainless steel 304 ** with MP	combinable single door with high protection	combinable single door with MP EMC				
							2000	400	400	
							2000	400	500	
							2000	400	600	
							2000	400	800	
							2000	500	500	
							2000	600	400	
							2000	600	500	
				MCSS20066			2000	600	600	
							2000	600	800	
EKSS20084							2000	800	400	
							2000	800	500	
				MCSS20086		MCSS20086HP	MCSE20086R5	2000	800	600
							MCSE20088R5	2000	800	800
EKSS20104								2000	1000	400
								2000	1000	500
				MCSS20106				2000	1000	600
								2000	1000	800
	EKDS20124	EKDS20124-4X						2000	1200	400
								2000	1200	500
					MCDS20126			2000	1200	600
								2000	1200	800
	EKDS20164	EKDS20164-4X						2000	1600	400
								2000	1600	500
								2000	1600	600
								2200	600	600
								2200	600	800
								2200	800	600
						MCSS22088HP		2200	800	800
								2200	1000	600
								2200	1200	600

** Add -316 to the item number, if stainless steel 316L is required.

Wall Mounted Enclosures





Wall Mounted Enclosures

TAKEYO



MILD STEEL

single door	double door	panel
IP 66 TYPE 4, 12 IK 10	IP 55 TYPE 12 IK 10	IP 66 TYPE 4, 12 IK 10
H: 200 - 1200 W: 200 - 800 D: 155 - 400	H: 600 - 1400 W: 800 - 1200 D: 300	H: 300 W: 600 - 1200 D: 300

STAINLESS STEEL

single door	double door	single door integrated rainhood	single door hygienic design
IP 66 TYPE 4X, 12 IK 10	IP 55 TYPE 12 IK 10	IP 66 TYPE 4X, 12 IK 10	IP 66, 69, 69K TYPE 4X, 12, 13 IK 08
H: 180 - 1400 W: 200 - 800 D: 150 - 400	H: 1000 - 1200 W: 1000 - 1200 D: 300 - 400	H: 300 - 1400 W: 200 - 800 D: 155 - 400	H: 442 - 1425 W: 220 - 810 D: 155 - 300

OUR PICK!



GALVANISED STEEL

POLYESTER

EMC

compact single door plain door

compact single door transparent door

modular single door plain door

modular single door transparent door

modular double door plain door

IP 54
TYPE 12
IK 10

IP 66
TYPE 4, 4X, 12, 13
IK 10

IP 66
TYPE 4, 4X, 12, 13
IK 07

IP 65 / ip 54
TYPE 4X, 12, 13
IK 10

IP 65 / IP 54
TYPE 12, 13
IK 07

IP 54
IK 10

H: 400 - 1000
W: 400 - 800
D: 210 - 300

H: 315 - 1035
W: 215 - 835
D: 170 - 300

H: 415 - 1035
W: 315 - 835
D: 170 - 300

H: 500 - 1250
W: 500 - 1000
D: 320

H: 500 - 1250
W: 500 - 750
D: 320

H: 750 - 1250
W: 1000 - 1250
D: 320



Wall Mounted Enclosures

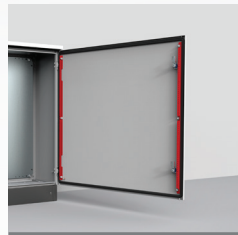
FULL ACCESSORIES



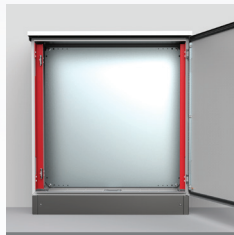
Wide range of standard accessories for virtually any application



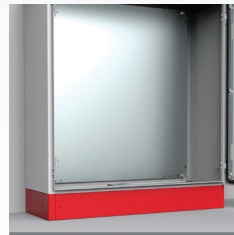
MOUNTING
PLATES



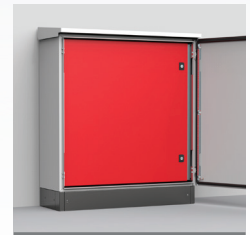
PROFILES



19"

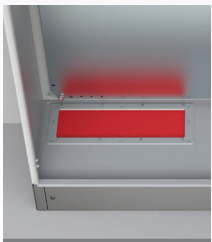


FIXATION



DOORS

ES COMPATIBILITY



GLAND PLATES



CABLE
MANAGEMENT



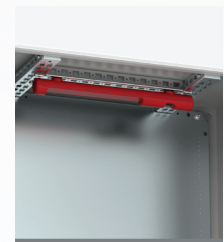
LIFTING



PROTECTION



EARTHING



LIGHTS

Wall Mounted Enclosures



**10 MINUTES
SAVED**

for each wall mounted enclosure
with the below accessories

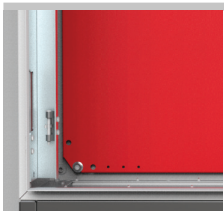
1 x MOUNTING PLATE

3 x 180° HINGES

+ x PROFILES



FAST ASSEMBLY



Mounting
plate



Machining free
180° hinges

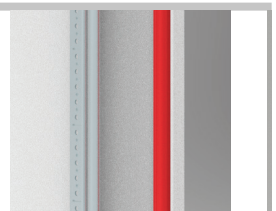


Profiles

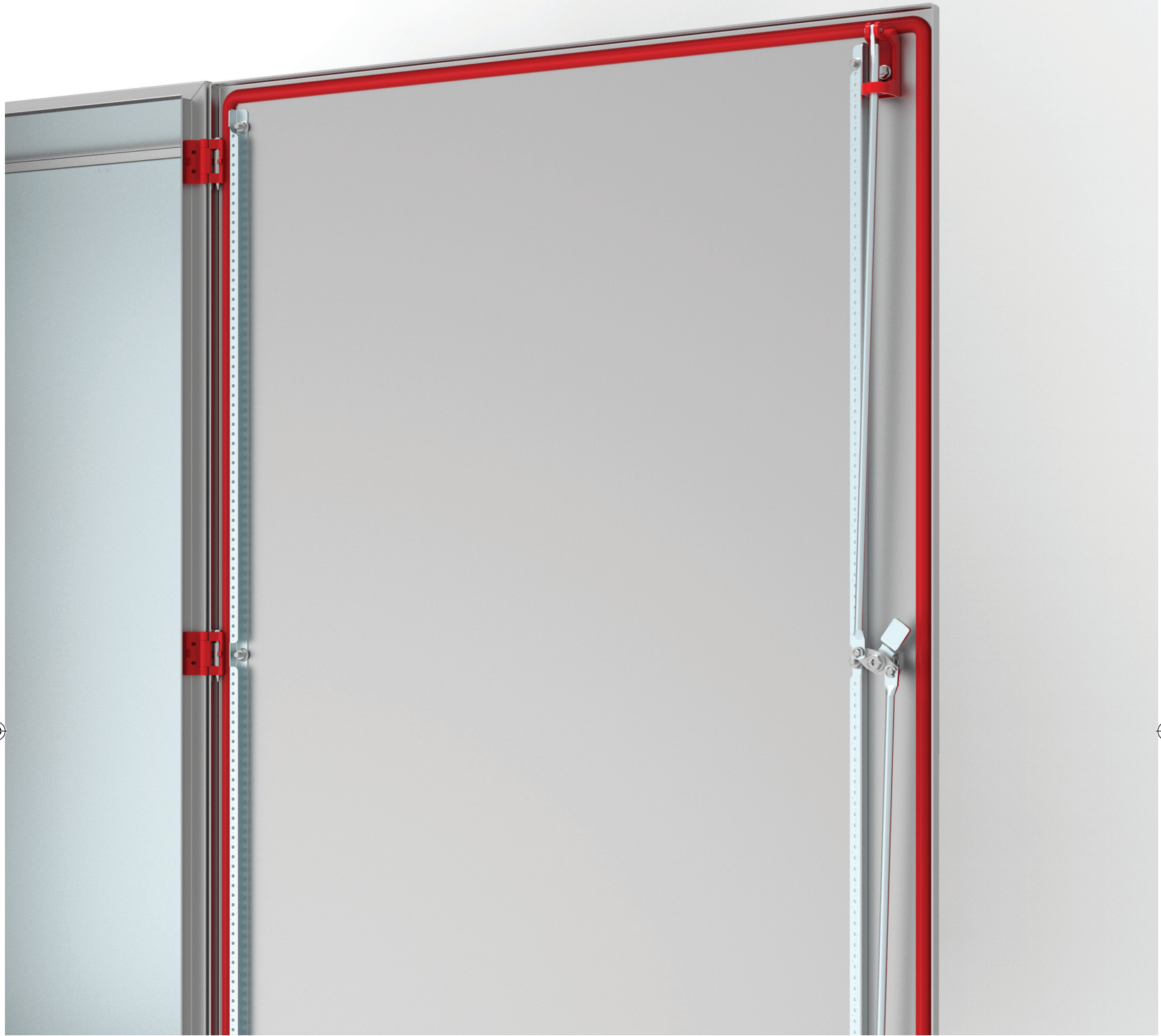
OPTIMUM PROTECTION



Door positioning
for large enclosures



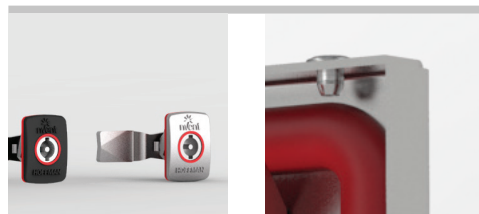
Low water
absorption
gasket



APPEALING DESIGN



Silicone gasket for 316 stainless steel enclosures



Lock cover



Door corner forming stainless steel

Wall Mounted Enclosures

Height	Width	Depth	mild steel			stainless steel			
			single door with MP *	double door with MP *	panel with MP *	single door stainless steel 304 ** with MP	double door stainless steel 304 ** with MP	single door integrated rainhood stainless steel 304 ** with MP	single door hygienic design stainless steel 304 with MP
180	240	150				ASR0182415			
200	200	155	MAS0202015R5						
240	240	150				ASR0242415			
240	360	150				ASR0243615			
250	200	155	MAS0252015R5						
250	250	155	MAS0252515R5						
300	200	150				ASR0302015			
300	200	155						AFS03021	
300	250	155	MAS0302515R5						
300	250	210	MAS0302521R5						
300	300	155	MAS0303015R5						
300	300	210	MAS0303021R5						
300	600	300			MAP0306030R5				
300	800	300			MAP0308030R5				
300	1000	300			MAP0310030R5				
300	1200	300			MAP0312030R5				
315	215	170							
350	250	155	MAS0352515R5						
360	240	150				ASR0362415			
400	300	150				ASR0403015			
400	300	155	MAS0403015R5					AFS04031	
400	300	210	MAS0403021R5			ASR0403021			
400	400	210	MAS0404021R5			ASR0404021		AFS04042	
400	500	210	MAS0405021R5						
400	600	210	MAS0406021R5			ASR0406021		AFS04062	
415	315	170							
442	220	155							HDW0442215
500	300	210	MAS0503021R5						
500	400	155	MAS0504015R5						
500	400	210	MAS0504021R5			ASR0504021			
500	400	260	MAS0504026R5						
500	400	300	MAS0504030R5						
500	500	210	MAS0505021R5			ASR0505021		AFS05052	
500	500	300	MAS0505030R5						
500	500	320							
500	750	320							
515	415	230							
552	390	210							HDW0553921
552	810	210							HDW0558121
600	400	155	MAS0604015R5						
600	400	210	MAS0604021R5			ASR0604021		AFS06042	
600	400	260	MAS0604026R5						
600	400	300	MAS0604030R5						
600	500	155	MAS0605015R5						
600	500	210	MAS0605021R5						
600	500	260	MAS0605026R5						
600	500	300	MAS0605030R5						
600	600	210	MAS0606021R5			ASR0606021		AFS06062	
600	600	300	MAS0606030R5			ASR0606030		AFS06063	
600	600	400	MAS0606040R5						
600	800	300	MAS0608030R5	MAD0608030R5		ASR0608030		AFS06083	

* Add PE to the part number, if the mounting plate is not required.
 ** Add -316 to the item number, if stainless steel 316L is required.

galvanised steel		polyester				Height	Width	Depth
single door with MP EMC	compact single door plain door without MP	compact single door transparent door without MP	modular single door plain door without MP	modular single door transparent door without MP	modular double door plain door without MP			
						180	240	150
						200	200	155
						240	240	150
						240	360	150
						250	200	155
						250	250	155
						300	200	150
						300	200	155
						300	250	155
						300	250	210
						300	300	155
						300	300	210
						300	600	300
						300	800	300
						300	1000	300
						300	1200	300
	UCP320					315	215	170
						350	250	155
						360	240	150
						400	300	150
						400	300	155
						400	300	210
MASE0404021R5						400	400	210
						400	500	210
MASE0406021R5						400	600	210
	UCP430	UCPT430				415	315	170
						442	220	155
						500	300	210
						500	400	155
						500	400	210
						500	400	260
						500	400	300
						500	500	210
						500	500	300
			UDP5050	UDPT5050		500	500	320
			UDP5075	UDPT5075		500	750	320
	UCP540	UCPT540				515	415	230
						552	390	210
						552	810	210
						600	400	155
						600	400	210
						600	400	260
						600	400	300
						600	500	155
						600	500	210
						600	500	260
						600	500	300
MASE0606021R5						600	600	210
						600	600	300
						600	600	400
						600	800	300

Wall Mounted Enclosures

Height	Width	Depth	mild steel			stainless steel			
			single door with MP *	double door with MP *	panel with MP *	single door stainless steel 304 ** with MP	double door stainless steel 304 ** with MP	single door integrated rainhood stainless steel 304 ** with MP	single door hygienic design stainless steel 304 with MP
605	610	300							HDW0606130
615	415	230							
672	510	210							HDW0675121
700	500	210	MAS0705021R5						
700	500	260	MAS0705026R5						
735	535	270							
750	500	320							
750	750	320							
750	1000	320							
750	1250	320							
772	390	210							HDW0773921
772	610	210							HDW0776121
800	400	300	MAS0804030R5						
800	600	210	MAS0806021R5			ASR0806021		AFS08062	
800	600	260	MAS0806026R5						
800	600	300	MAS0806030R5			ASR0806030		AFS08063	
800	600	400	MAS0806040R5						
800	800	210	MAS0808021R5					AFS08082	
800	800	300	MAS0808030R5			ASR0808030		AFS08083	
800	800	400	MAS0808040R5						
800	1200	300		MAD0801230R5					
825	810	300							HDW0828130
835	635	300							
1000	500	320							
1000	600	260	MAS1006026R5						
1000	600	300	MAS1006030R5						
1000	750	320							
1000	800	260	MAS1008026R5						
1000	800	300	MAS1008030R5			ASR1008030		AFS10083	
1000	800	400	MAS1008040R5						
1000	1000	300		MAD1001030R5			ADR1001030		
1000	1000	320							
1000	1200	300					ADR1001230		
1000	1250	320							
1035	835	300							
1200	600	300	MAS1206030R5					AFS12063	
1200	800	300	MAS1208030R5			ASR1208030		AFS12083	
1200	800	400	MAS1208040R5			ASR1208040		AFS12084	
1200	1000	300		MAD1201030R5					
1200	1200	300		MAD1201230R5					
1200	1200	400					ADR1201240		
1225	810	300							HDW1228130
1250	750	320							
1250	1000	320							
1250	1000	320							
1400	800	400				ASR1408040		AFS14084	
1400	1000	300		MAD1401030R5					
1425	810	300							HDW1428130

* Add PE to the part number, if the mounting plate is not required.
 ** Add -316 to the item number, if stainless steel 316L is required.

galvanised steel		polyester				Height	Width	Depth
single door with MP EMC	compact single door plain door without MP	compact single door transparent door without MP	modular single door plain door without MP	modular single door transparent door without MP	modular double door plain door without MP			
						605	610	300
	UCP640	UCPT640				615	415	230
						672	510	210
						700	500	210
						700	500	260
	UCP750	UCPT750				735	535	270
			UDP7550	UDPT7550		750	500	320
			UDP7575	UDPT7575		750	750	320
			UDP75100	UDPT75100		750	1000	320
					UDP75125	750	1250	320
						772	390	210
						772	610	210
						800	400	300
						800	600	210
						800	600	260
						800	600	300
						800	600	400
						800	800	210
						800	800	300
						800	800	400
						800	1200	300
						825	810	300
	UCP860	UCPT860				835	635	300
			UDP10050	UDPT10050		1000	500	320
						1000	600	260
						1000	600	300
			UDP10075	UDPT10075		1000	750	320
						1000	800	260
MASE1008030R5						1000	800	300
						1000	800	400
			UDP100100		UDP100102	1000	1000	320
						1000	1200	300
					UDP100125	1000	1250	320
	UCP1080	UCPT1080				1035	835	300
						1200	600	300
						1200	800	300
						1200	800	400
						1200	1000	300
						1200	1200	300
						1200	1200	400
						1225	810	300
			UDP12575	UDPT12575		1250	750	320
					UDP125100	1250	1000	320
					UDP125102	1250	1000	320
						1400	800	400
						1400	1000	300
						1425	810	300

Terminal Boxes





VAC
PUMP
ON/OFF

ENGINE
SPEED
ON/OFF

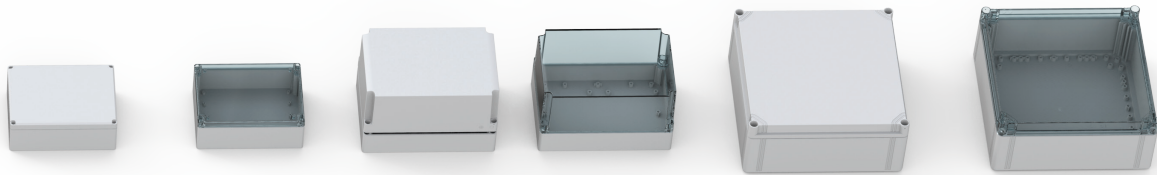
Terminal Boxes

TAKE YO



MILD STEEL	STAINLESS STEEL	ALUMINIUM	POLYESTER	POLYCARBONATE			
box plain cover	box plain cover	box plain cover	box plain cover	small box plain cover	small box transparent cover	large box plain cover	large box transparent cover
IP 66 TYPE 4, 12 IK 08	IP 66 TYPE 4X, 12 IK 08	IP 66, IP 67 IK 09	IP 66, IP 67 IK 08	IP 66, IP 67 IK 08	IP 66, IP 67 IK 08	IP 66, IP 67 IK 08	IP 66, IP 67 IK 08
H: 150 - 400 W: 150 - 800 D: 80 - 120	H: 150 - 400 W: 150 - 800 D: 80 - 120	H: 45 - 230 W: 50 - 600 D: 30 - 180	H: 75 - 405 W: 80 - 560 D: 55 - 120	H: 53 - 230 W: 55 - 300 D: 36 - 121	H: 53 - 230 W: 55 - 300 D: 36 - 121	H: 200 - 400 W: 200 - 600 D: 132	H: 200 - 400 W: 200 - 600 D: 132

OUR PICK!



ABS

small box plain cover	small box transparent cover	medium box plain cover	medium box transparent cover	large box plain cover	large box transparent cover
IP 66, IP 67	IP 66, IP 67 TYPE 4X, 12, 13	IP 66, IP 67	IP 66, IP 67	IP 66, IP 67	IP 66, IP 67
IK 06, IK 07	IK 06, IK 07	IK 06, IK 07	IK 06, IK 07	IK 06, IK 07	IK 06, IK 07
H: 53 - 230 W: 55 - 300 D: 36 - 121	H: 53 - 230 W: 55 - 300 D: 36 - 121	H: 75 - 175 W: 125 - 250 D: 75 - 150	H: 75 - 175 W: 125 - 250 D: 75 - 150	H: 200 - 400 W: 200 - 600 D: 132	H: 200 - 400 W: 200 - 600 D: 132



Terminal Boxes

Height	Width	Depth	mild steel	stainless steel	aluminium	polyester	polycarbonate				
			box plain cover	box plain cover stainless steel 304 *	box plain cover	box plain cover	small box plain cover	small box transparent cover	large box plain cover	large box transparent cover	
45	50	30			HALP050503GE						
53	55	36					DPCP050504GE	DPCP050504TE			
53	65	36					DPCP050704GE	DPCP050704TE			
64	58	36			HALP060604GE						
64	98	36			HALP061004GE						
64	150	36			HALP061504GE						
75	80	55				MGRP080806GE					
75	80	75				MGRP080808GE					
75	110	55				MGRP081106GE					
75	110	75				MGRP081108GE					
75	125	75									
75	125	100									
75	125	125									
75	160	55				MGRP081606GE					
75	160	75				MGRP081608GE					
75	190	55				MGRP081906GE					
75	190	75				MGRP081908GE					
80	75	57			HALP080806GE						
80	82	56					DPCP080806GE	DPCP080806TE			
80	82	86					DPCP080809GE	DPCP080809TE			
80	120	56					DPCP081206GE	DPCP081206TE			
80	120	86					DPCP081209GE	DPCP081209TE			
80	125	57			HALP081306GE						
80	160	56					DPCP081606GE	DPCP081606TE			
80	160	86					DPCP081609GE	DPCP081609TE			
80	175	57			HALP081806GE						
80	250	57			HALP082506GE						
120	122	56					DPCP121206GE	DPCP121206TE			
120	122	86					DPCP121209GE	DPCP121209TE			
120	122	90				MGRP121209GE					
120	160	91					DPCP121609GE	DPCP121609TE			
120	200	86					DPCP122009GE	DPCP122009TE			
120	220	90				MGRP122209GE					
122	122	80			HALP121208GE						
122	122	90			HALP121209GE						
122	220	80			HALP122208GE						
122	220	90			HALP122209GE						
122	360	80			HALP123608GE						
125	125	75									
125	125	100									
125	125	125									
125	175	75									
125	175	100									
125	175	125									
125	175	150									
150	150	80	STB151508	SSTB151508							
150	150	120	STB151512	SSTB151512							
150	200	76					DPCP152008GE	DPCP152008TE			
150	300	80	STB153008	SSTB153008							
150	300	120	STB153012	SSTB153012							

* Add -316 to the item number, if stainless steel 316L is required.

ABS

small box plain cover	small box transparent cover	medium box plain cover	medium box transparent cover	large box plain cover	large box transparent cover	Height	Width	Depth
						45	50	30
DABP050504GE	DABP050504TE					53	55	36
DABP050704GE	DABP050704TE					53	65	36
						64	58	36
						64	98	36
						64	150	36
						75	80	55
						75	80	75
						75	110	55
						75	110	75
		SABP081308GE	SABP081308TE			75	125	75
		SABP081310GE	SABP081310TE			75	125	100
		SABP081313GE	SABP081313TE			75	125	125
						75	160	55
						75	160	75
						75	190	55
						75	190	75
						80	75	57
DABP080806GE	DABP080806TE					80	82	56
DABP080809GE	DABP080809TE					80	82	86
DABP081206GE	DABP081206TE					80	120	56
DABP081209GE	DABP081209TE					80	120	86
						80	125	57
DABP081606GE	DABP081606TE					80	160	56
DABP081609GE	DABP081609TE					80	160	86
						80	175	57
						80	250	57
DABP121206GE	DABP121206TE					120	122	56
DABP121209GE	DABP121209TE					120	122	86
						120	122	90
DABP121609GE	DABP121609TE					120	160	91
DABP122009GE	DABP122009TE					120	200	86
						120	220	90
						122	122	80
						122	122	90
						122	220	80
						122	220	90
						122	360	80
		SABP131308GE	SABP131308TE			125	125	75
		SABP131310GE	SABP131310TE			125	125	100
		SABP131313GE	SABP131313TE			125	125	125
		SABP131808GE	SABP131808TE			125	175	75
		SABP131810GE	SABP131810TE			125	175	100
		SABP131813GE	SABP131813TE			125	175	125
		SABP131815GE	SABP131815TE			125	175	150
						150	150	80
						150	150	120
DABP152008GE	DABP152008TE					150	200	76
						150	300	80
						150	300	120

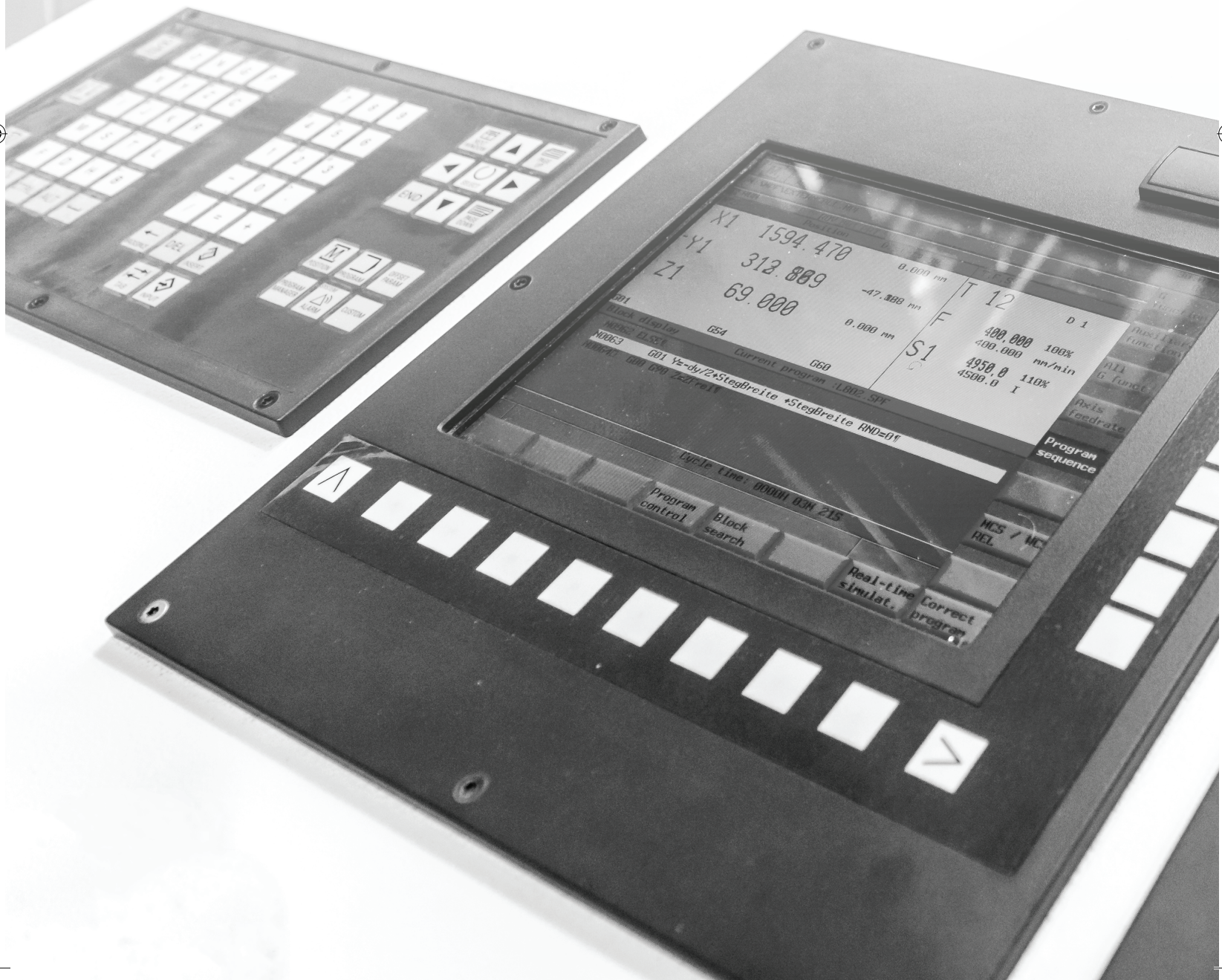
Terminal Boxes

Height	Width	Depth	mild steel	stainless steel	aluminium	polyester	polycarbonate			
			box plain cover	box plain cover stainless steel 304 *	box plain cover	box plain cover	small box plain cover	small box transparent cover	large box plain cover	large box transparent cover
160	160	90			HALP161609GE	MGRP161609GE				
160	240	91					DPCP162409GE	DPCP162409TE		
160	240	121					DPCP162412GE	DPCP162412TE		
160	260	90			HALP162609GE	MGRP162609GE				
160	360	90			HALP163609GE	MGRP163609GE				
160	560	90			HALP165609GE	MGRP165609GE				
175	175	75								
175	175	100								
175	175	125								
175	175	150								
175	250	75								
175	250	100								
175	250	150								
200	200	80	STB202008	SSTB202008						
200	200	120	STB202012	SSTB202012						
200	200	132							OPCP202013GE	OPCP202013TE
200	300	80	STB203008	SSTB203008						
200	300	120	STB203012	SSTB203012						
200	300	132							OPCP203013GE	OPCP203013TE
200	400	80	STB204008	SSTB204008						
200	400	120	STB204012	SSTB204012						
200	400	132							OPCP204013GE	OPCP204013TE
200	500	120	STB205012	SSTB205012						
200	600	120	STB206012	SSTB206012						
200	800	120	STB208012	SSTB208012						
230	200	110			HALP232011GE					
230	300	86					DPCP233009GE	DPCP233009TE		
230	300	111					DPCP233011GE	DPCP233011TE		
230	330	110			HALP233311GE					
230	330	180			HALP233318GE					
230	400	110			HALP234011GE					
230	600	110			HALP236011GE					
250	255	120				MGRP252612GE				
250	400	120				MGRP254012GE				
300	300	80	STB303008	SSTB303008						
300	300	120	STB303012	SSTB303012						
300	300	132							OPCP303013GE	OPCP303013TE
300	400	120	STB304012	SSTB304012						
300	400	132							OPCP304013GE	OPCP304013TE
300	500	120	STB305012	SSTB305012						
300	600	120	STB306012	SSTB306012						
300	600	132							OPCP306013GE	OPCP306013TE
400	400	120	STB404012	SSTB404012						
400	600	120	STB406012	SSTB406012						
400	600	132							OPCP406013GE	OPCP406013TE
400	800	120	STB408012	SSTB408012						
405	400	120				MGRP414012GE				

* Add -316 to the item number, if stainless steel 316L is required.

ABS						Height	Width	Depth
small box plain cover	small box transparent cover	medium box plain cover	medium box transparent cover	large box plain cover	large box transparent cover			
						160	160	90
DABP162409GE	DABP162409TE					160	240	91
DABP162412GE	DABP162412TE					160	240	121
						160	260	90
						160	360	90
						160	560	90
		SABP181808GE	SABP181808TE			175	175	75
		SABP181810GE	SABP181810TE			175	175	100
		SABP181813GE	SABP181813TE			175	175	125
		SABP181815GE	SABP181815TE			175	175	150
		SABP182508GE	SABP182508TE			175	250	75
		SABP182510GE	SABP182510TE			175	250	100
		SABP182515GE	SABP182515TE			175	250	150
						200	200	80
						200	200	120
				OABP202013GE	OABP202013TE	200	200	132
						200	300	80
						200	300	120
				OABP203013GE	OABP203013TE	200	300	132
						200	400	80
						200	400	120
				OABP204013GE	OABP204013TE	200	400	132
						200	500	120
						200	600	120
						200	800	120
						230	200	110
DABP233009GE	DABP233009TE					230	300	86
DABP233011GE	DABP233011TE					230	300	111
						230	330	110
						230	330	180
						230	400	110
						230	600	110
						250	255	120
						250	400	120
						300	300	80
						300	300	120
				OABP303013GE	OABP303013TE	300	300	132
						300	400	120
				OABP304013GE	OABP304013TE	300	400	132
						300	500	120
						300	600	120
				OABP306013GE	OABP306013TE	300	600	132
						400	400	120
						400	600	120
				OABP406013GE	OABP406013TE	400	600	132
						400	800	120
						405	400	120

Human Machine Interface





Human Machine Interface

TAKE YO



MILD STEEL

PC Enclosure	console compact single door	console compact double door	console modular single door	console modular double door
IP 44	IP 66 TYPE 4, 12, 13	IP 55 TYPE 12, 13	IP 66 TYPE 4, 12, 13	IP 55 TYPE 12, 13
IK 10	IK 10	IK 10	IK 10	IK 10
H: 1600	H: 985	H: 985	H: 1450	H: 1450
W: 600	W: 600 - 1000	W: 1200 - 1600	W: 600 - 1000	W: 1200 - 1600
D: 600 - 800	D: 400	D: 400	D: 985	D: 985

OUR PICK!



STAINLESS STEEL

ALUMINIUM

MILD STEEL

console

console

console

console

control panel

control enclosures

compact single door

compact double door

modular single door

modular double door

IP 66
TYPE 4X, 12, 13
IK 10

IP 55
TYPE 12, 13
IK 10

IP 66
TYPE 4X, 12, 13
IK 10

IP 55
TYPE 12, 13
IK 10

IP 65

IP 55

H: 985
W: 600 - 1000
D: 400

H: 985
W: 1200
D: 400

H: 985
W: 600 - 1000
D: 985

H: 1450
W: 1200 - 1600
D: 985

H: 309 - 495
W: 395 - 542
D: 200

H: 300 - 600
W: 300 - 600
D: 155 - 210



Human Machine Interface

CONSOLES

Height	Width	Depth	mild steel				stainless steel			
			console compact single door	console compact double door	console modular single door	console modular double door	console compact single door stainless steel 304 *	console compact double door stainless steel 304 *	console modular single door stainless steel 304 *	console modular double door stainless steel 304 *
250	600	985			MPC062R5			MPCS062		
250	800	985			MPC082R5			MPCS082		
250	1000	985			MPC102R5			MPCS102		
250	1200	985			MPC122R5			MPCS122		
250	1600	985			MPC162R5			MPCS162		
500	600	494			MPC061R5			MPCS061		
500	800	494			MPC081R5			MPCS081		
500	1000	494			MPC101R5			MPCS101		
500	1200	494			MPC121R5			MPCS121		
500	1600	494			MPC161R5			MPCS161		
700	600	500			MPC063R5			MPCS063		
700	800	500			MPC083R5			MPCS083		
700	1000	500			MPC103R5			MPCS103		
700	1200	500				MPC123R5			MPCS123	
700	1600	500				MPC163R5			MPCS163	
985	600	400	MPG06R5				MPGS06			
985	800	400	MPG08R5				MPGS08			
985	1000	400	MPG10R5				MPGS10			
985	1200	400		MPG12R5				MPGS12		
985	1600	400		MPG16R5						

* Add -316 to the item number, if stainless steel 316L is required.

PC ENCLOSURES

Height	Width	Depth	mild steel
			PC Enclosure
1600	600	600	MCM16066
1600	600	800	MCM16068

CONTROL ENCLOSURES

Height	Width	Depth	mild steel	aluminium
			control enclosures	control panel
300	300	155	OICE303015	
300	400	210	OICE304021	
309	525	200		OICP305220
345	395	200		OICP343920
354	525	200		OICP355220
398	525	200		OICP395220
400	400	210	OICE404021	
400	600	210	OICE406021	
415	470	200		OICP414720
495	542	200		OICP495420
500	500	210	OICE505021	
500	600	210	OICE506021	
600	600	210	OICE606021	

WALL SECTIONS



S1MWF / S2MWF



S1MTBB / S2MRB



S1MSJ / S2MSJ



S1MWJV / S2MWJV



S1MWJH / S2MWJH

INTERMEDIATE JOINTS



S1ME / S2ME



S1MIJ / S2MIJ



S1MER / S2MER

COUPLING



S1MFC / S2MFC



S1MFEC / S2MFEC

PROFILES



S1MT / S2MT

Thermal Management





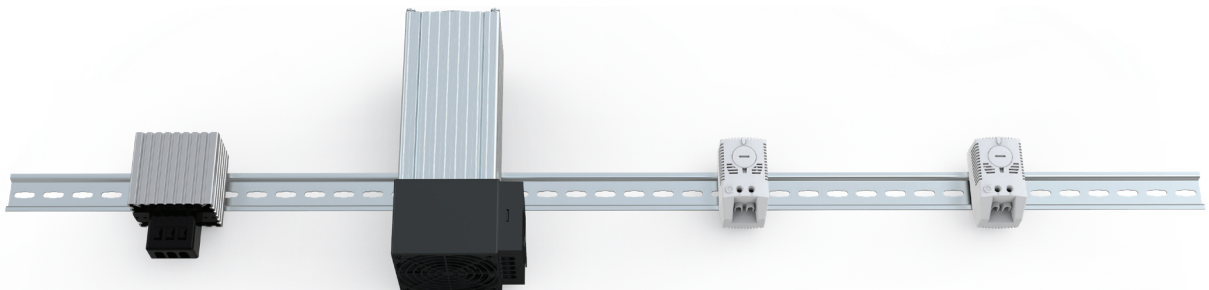
Thermal Management

TAKEYO



COOLING UNITS

E-NEXT	E-NOX	Slim Fit	Extreme	DEK
indoor vertical	outdoor vertical	indoor vertical	vertical	indoor roof
IP 55	IP 55	IP 54	IP 66, IP 69	IP 54
TYPE 12	TYPE 12, 4, 4X	TYPE 12	TYPE 12, 3R, 4X	



HEATING & ANTICONDENSATION

TEMPERATURE & HUMIDITY CONTROL

HEATERS

FAN HEATERS

THERMOSTATS

HYGROSTATS

OUR PICK!



VORTEX

BP, HT

indoor, outdoor
vertical
IP 54 / IP 66

TYPE 12 / TYPE 4 /
TYPE 4X

AIR-AIR HEAT EXCHANGERS

MIX

indoor
vertical
IP 54

EF

indoor
vertical
IP 54

TYPE 12

EPF

outdoor
vertical
IP 55

TYPE 12

VENTILATION

RFU

indoor
roof
IP 33 / IP 54

TYPE 12 / TYPE 4 / TYPE
4X



CHILLERS

TCW / TAL



AIR-WATER HEAT EXCHANGERS

BLU / BIT



Thermal Management

cooling units					
	indoor vertical galvanised steel or stainless steel	outdoor vertical galvanised steel or stainless steel	indoor slim mount galvanized steel	indoor roof, galvinsed steel or stainless steel	indoor/outdoor washdown, IP69 stainless steel
Cooling capacity (W)					
400	NXT04		S0603	DEK04	
600			S0605		X2302
700	NXT06	NOX06			
800	NXT08	NOX08		DEK08	
1000	NXT10	NOX10			
1200	NXT12	NOX12		DEK12	
1300			S1010		
1500				DEK15	
1600	NXT16	NOX16			
2000	NXT20	NOX20	S1015	DEK20	
2300			S1620		
3000	NXT30	NOX30	S1640	DEK30	
4000	NXT40	NOX40		DEK40	
6000	NXT60	NOX60			
8000	EGO80	EM080			
9000	EGOAO	EMOAO			
15000	EGOAS				

ventilation										
	indoor vertical 230 V	indoor vertical 115 V	indoor vertical 24 V DC	outdoor vertical 230 V	outdoor vertical 115 V	outdoor vertical 24 V DC	roof IP33 230 V	roof IP54 230 V	roof IP33 115 V	roof IP54 115 V
Air flow (m³/h)										
25	EF100R5	EF100-115R5	EF100-24R5							
56				EFP200R5	EFP200-115R5	EFP200-24VACR5				
61	EF200R5	EF200-115R5	EF200-24R5							
100				EFP220R5	EFP220-115R5					
110	EF220R5	EF220-115R5	EF220-24R5							
145				EFP250R5	EFP250-115R5					
156	EF250R5	EF250-115R5	EF250-24R5							
233				EFP300R5	EFP300-115R5					
256	EF300R5	EF300-115R5	EF300-24R5							
350								RFU5005R5		RFU5015R5
480	EF500R5	EF500-115R5								
500							RFU5003R5		RFU5013R5	
505				EFP500R5	EFP500-115R5					
550								RFU7005R5		RFU7015R5
640	EF600R5	EF600-115R5								
700							RFU7003R5		RFU7013R5	
750								RFU10005R5		RFU10015R5
770				EFP600R5	EFP600-115R5					
845	EF700R5	EF700-115R5								
925				EFP700R5	EFP700-115R5					
1000							RFU10003R5		RFU10013R5	

vortex					
	indoor, outdoor aluminium TYPE 12	indoor, outdoor aluminium TYPE 4	indoor, outdoor stainless steel TYPE 4X	high temperature indoor, outdoor aluminium TYPE 4	high temperature indoor, outdoor stainless steel TYPE 4X
Cooling capacity (W)					
162	BP4008	BP4608	BP4608SS		
293	BP4015	BP4615	BP4615SS	HT4615	HT4615SS
586	BP4030	BP4630	BP4630SS	HT4630	HT4630SS
820	BP4040	BP4640	BP4640SS	HT4640	HT4640SS

Air-air heat exchangers	
Cooling capacity	indoor, galvanized steel or stainless steel
22 W/K	MIX22
36 W/K	MIX36
50 W/K	MIX50
80 W/K	MIX80

Air-to-water heat exchangers	
Cooling capacity (W)	BLU Series
1100	BLU10
1750	BLU18
2500	BLU25**
3500	BLU35
4500	BLU45
6000	BLU60
10000	BLUA0
15000	BLUA5
25000	BLUB5

** roof mount

heating & anticondensation						
	anticondensation small heater	anticondensation large heater	anticondensation compact heater without thermostat	anticondensation compact heater with thermostat	anticondensation fan heaters	anticondensation fan heaters with thermostat
Heating capacity (W)						
10	EGK010					
15		EHG015				
20	EGK020					
30	EGK030	EHG030				
45		EHG045				
50			ECH50	ECHT50		
60		EHG060				
75		EHG075				
100		EHG100	ECH100	ECHT100	EHV100	
150		EHG150	ECH150	ECHT150	EHV150	
200					EHV200	
250					EGL250UL230	
250					EGL250UL115 *	
300					EHV300	
400					EGL400UL230	
400					EGL400UL115 *	
400					EHV400	
550						ECR550

* 115 V

** 115 V

Thermal Management



INDUSTRIAL WATER CHILLERS

Mini TCW Series

900W to 4450W

TAL Series

2300W to 400000W

Mini Industrial water chillers	
Cooling capacity (W)*	TCW Series
900	TCW08
1600	TCW12
2200	TCW19
3000	TCW31
3900	TCW41

Industrial water chillers			
Cooling capacity (W)*	TAL/TCW Series	Cooling capacity (W)*	TAL/TCW Series
2300	TAL24	24800	TALB5
2900	TAL29	29000	TALB9
3600	TAL37	35800	TALC5
4550	TAL46	40000	TALD0
6000	TAL57	47000	TALD9
8100	TAL76	55000	TALE6
9950	TAL93	67000	TALF8
10900	TALA0	80000	TALG9
11400	TALA1	94000	TALI4
12400	TALA3	110000	TALM0
17800	TALA5	134000	TALO6
20100	TALA8		

Water-air heat exchangers	
Cooling capacity (W)	SAW Series
5000W	SAW50
10000W	SAWA0

* at 50Hz

Other Chillers available to meet demanding applications:



OTHER CHILLERS

TCO/TAO

Industrial oil chillers

TCI

Immersion coil chillers

TAU

Chillers for contaminated fluids



Pair air-to-water heat exchangers with chillers for a fully contained cabinet cooling solution.



AIR-WATER HEAT EXCHANGERS

BLU

**vertical
IP 55**

BIT

**roof
IP 55**



NVENT FLUIDS

903-TX
93% ethylene glycol

Corrosion Inhibitor

Biocide-Algicide

903-TX-Mixed
30% ethylene glycol, 70% water

FDA approved inhibited mono ethylene glycol

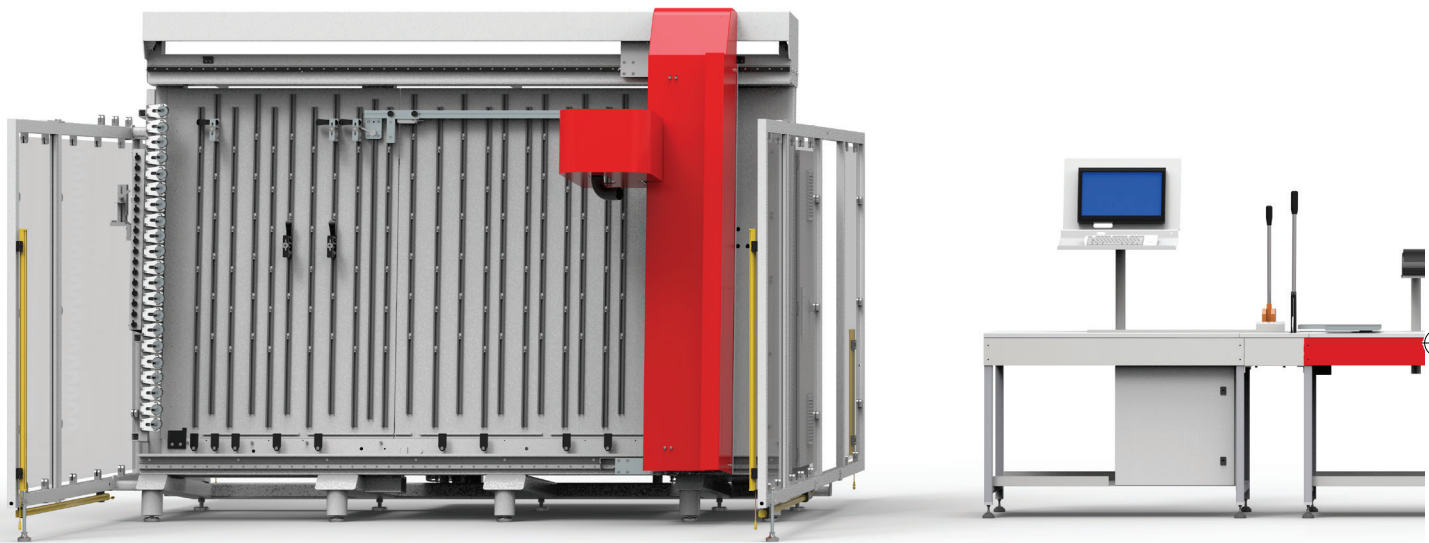
Panel Shop Automation





Panel Shop Automation

TAKE YO



ENCLOSURE MODIFICATION CENTERS

	ModCenter 163	ModCenter 263	ModCenter 280	ModCenter 293
Enclosures:	single door 1600 x 1250	double door 1600 x 2200	double door 2060 x 2200	double door 2380 x 2200
Panels:	1650 x 2400	1600 x 2400	2020 x 2400	2340 x 2400

RAIL AND CABLE DUCT CUTTING MACHINES

NCCUT2000	
Trimming length:	140 x 2000 mm
Accuracy:	0.5 mm
Label printer:	✓

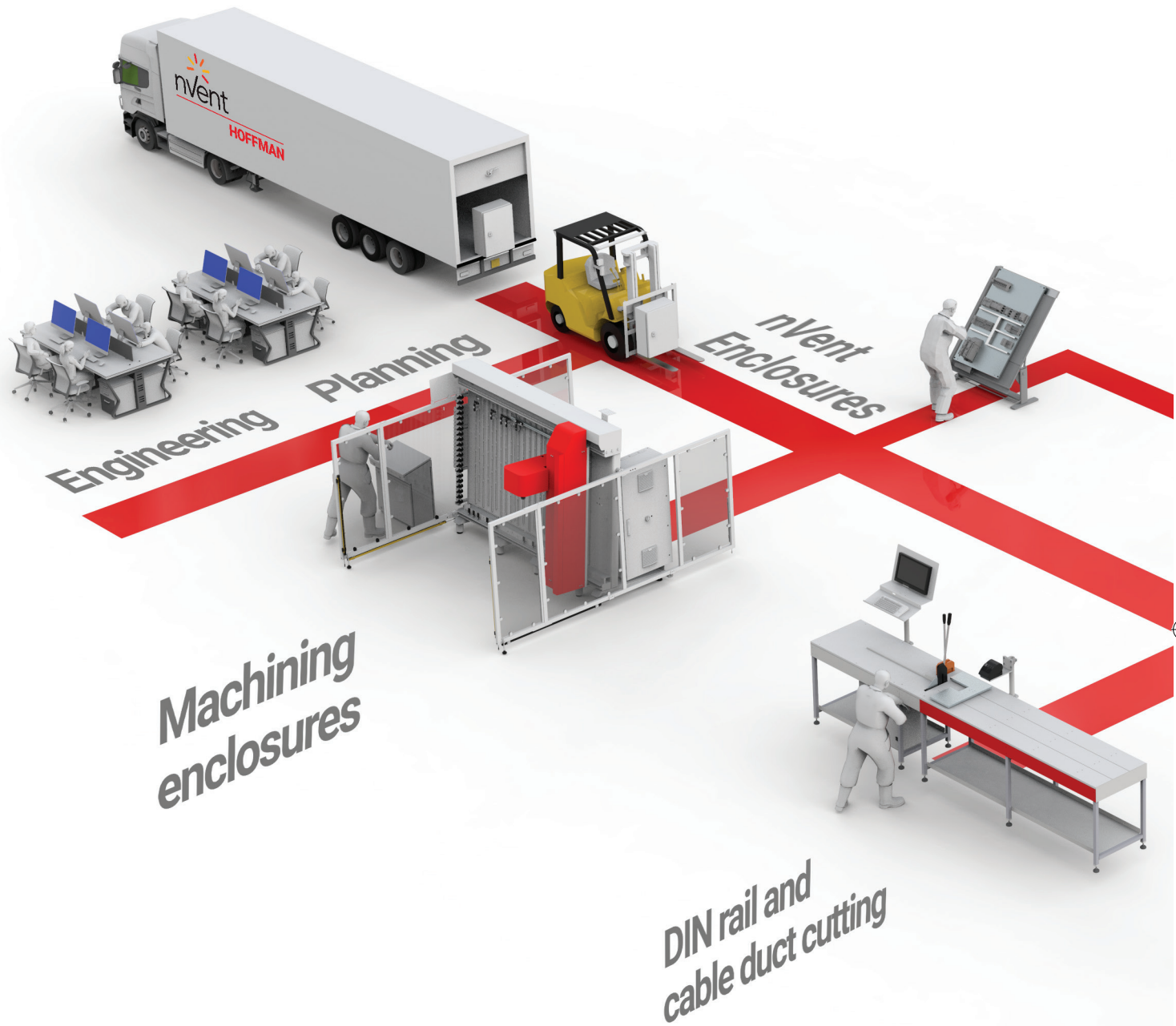
OUR PICK!

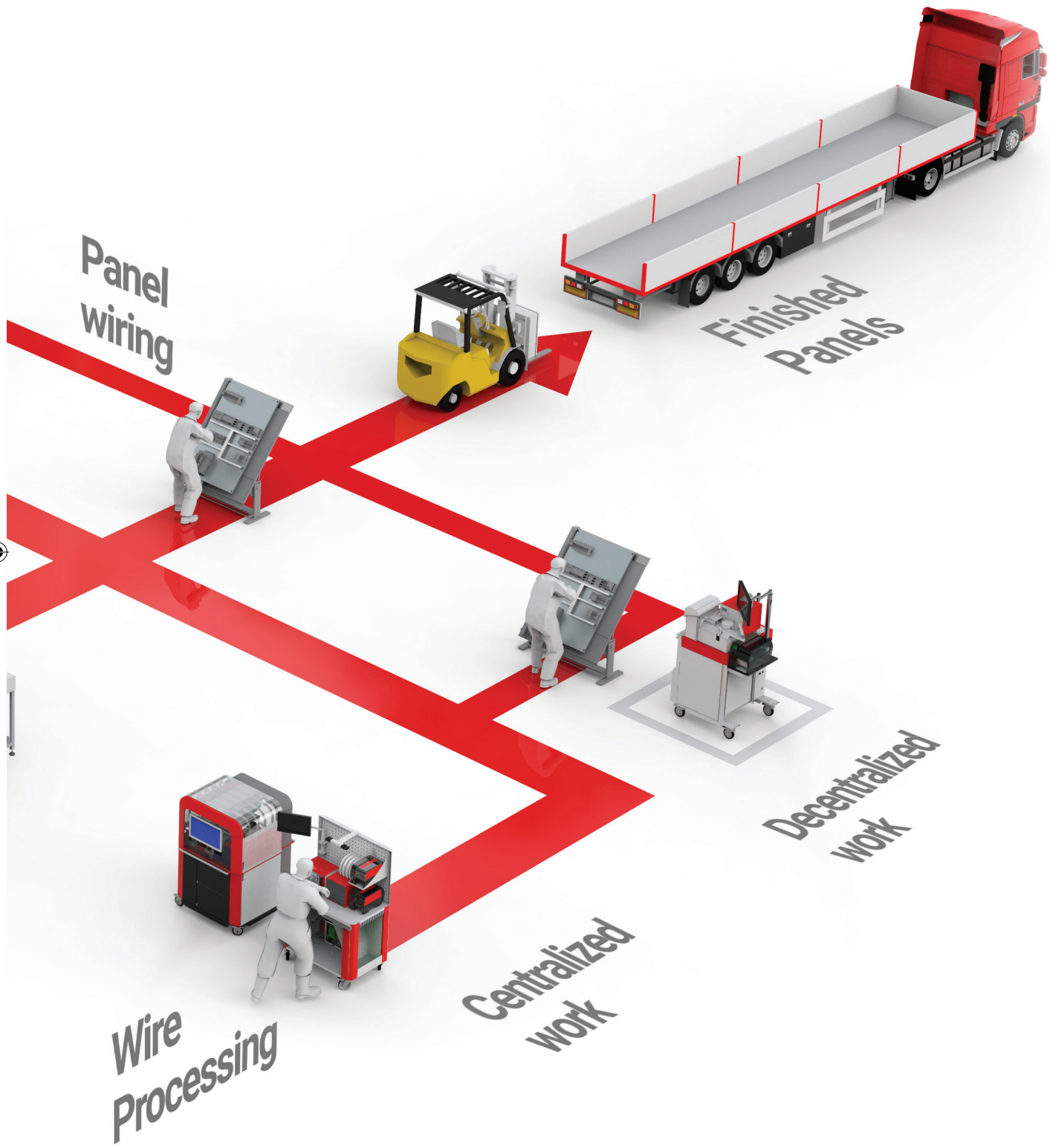


WIRE PROCESSING MACHINES

	Modular wire workstation PWA1000	Wire personal assistant PWA5000	Wire processing center PWA6000
Wire processing:	(De)centralized	Decentralized	Centralized
Wire cross section:	0.5 - 16 mm ²	0.5 - 2.5 mm ²	0.5 - 2.5 mm ²
Length cutting:	✓	✓	✓
Stripping:	✓	✓	✓
Crimping:	✓	✓	✓
Direct printing on the wire:	-	-	✓
Bundling:	-	-	✓
Wire feeding:	Configurable	8 wire spools	12 wire spools
Optional, external wire feeding:		Configurable storage including boxes and spools	
Software:		Personal wire suit	
Label printer:	optional	optional	-

Panel Shop Automation





Panel Shop Automation



80%
labor reductions
vs. traditional machining



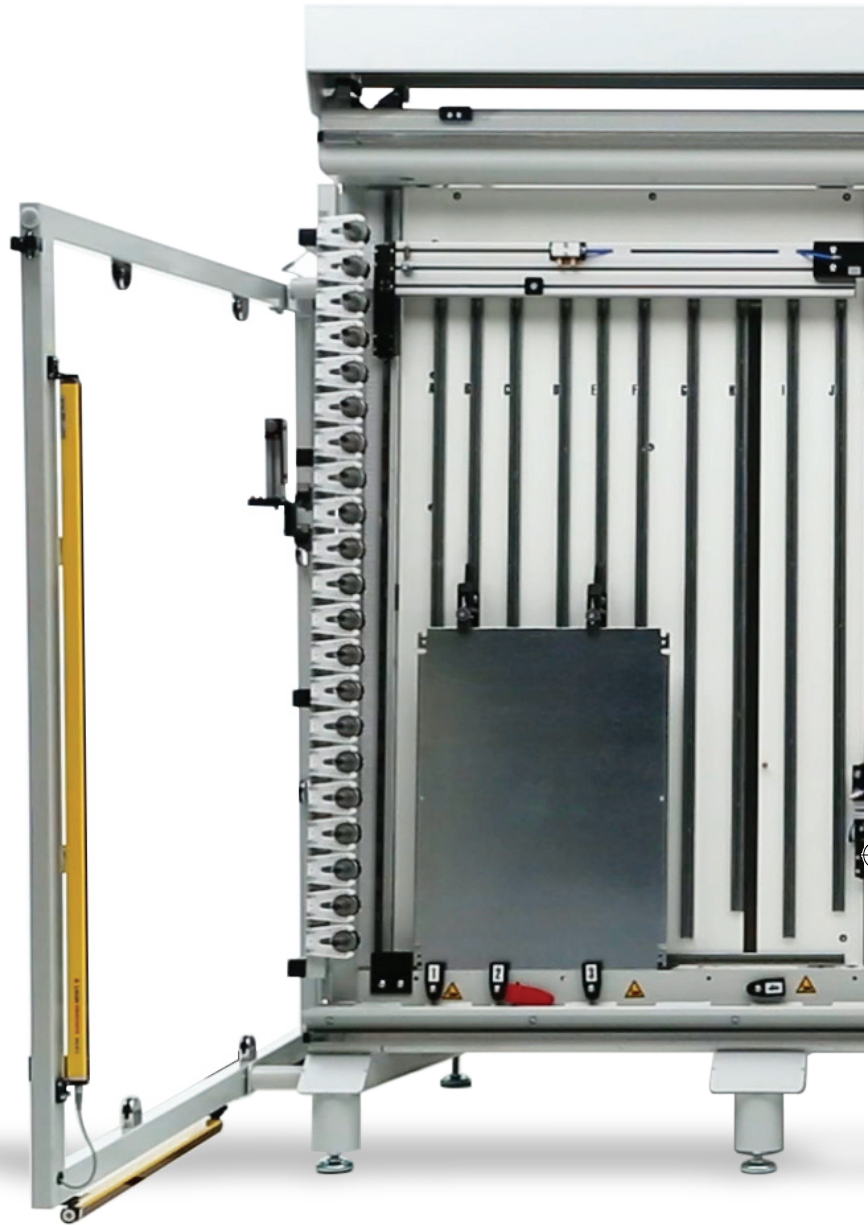
CUT-OUTS



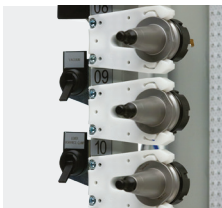
HOLES



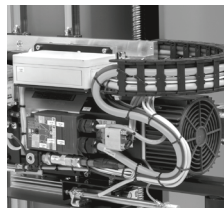
THREADING



KEY FEATURES

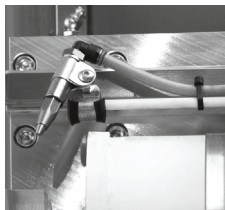
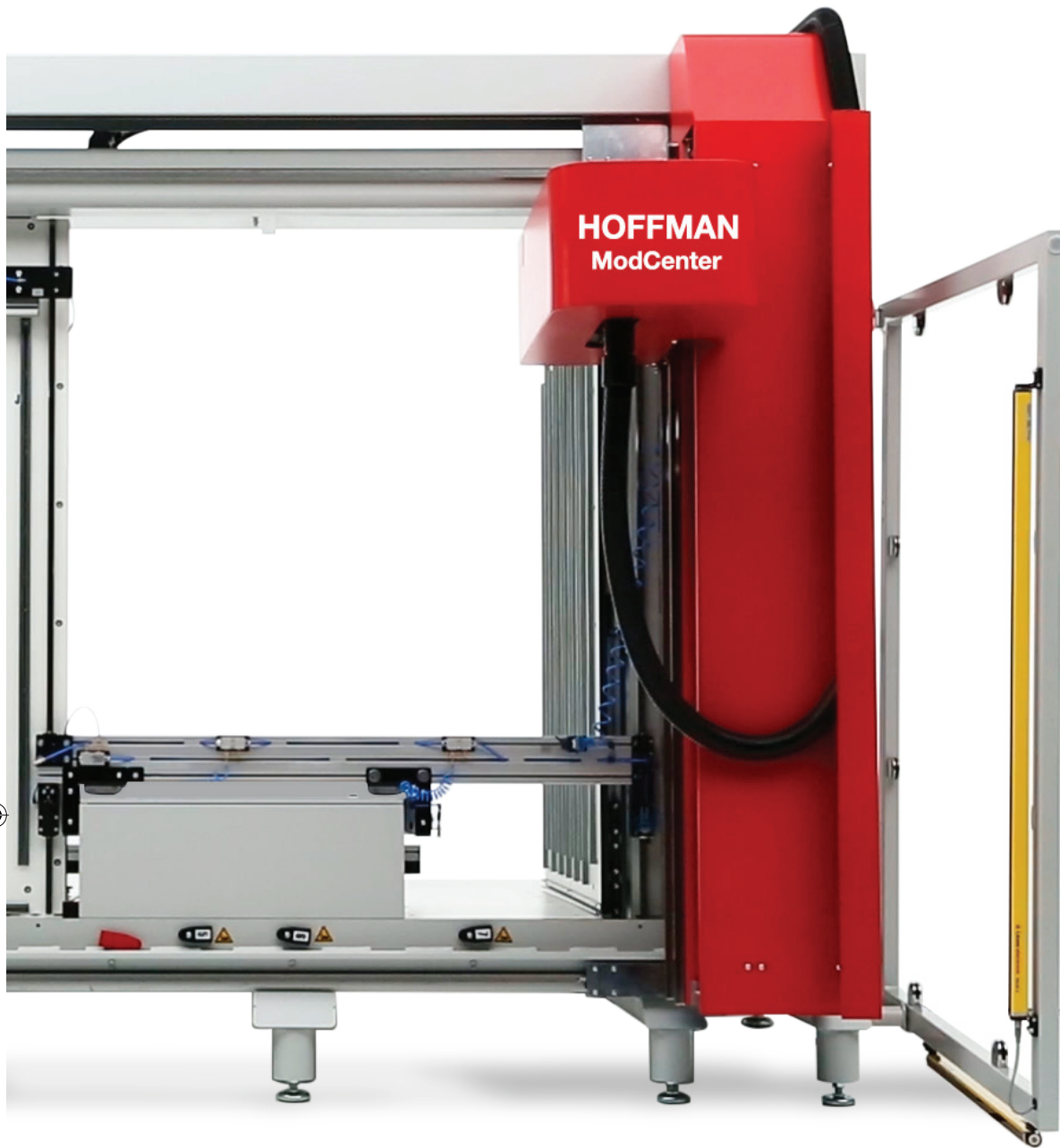


Short set-up time
thanks to 21 tool slots

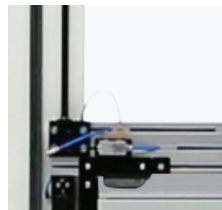


The ball screw spindles results in high precision machining by controlling the tolerances. The machine is perfect for large cut-outs and diameter threads.

The spindles also give one of the fastest material processing times



A smart and environmental friendly lubrication system extends tool life without excessive spilling keeping the machined product clean



Large surface to allow for simultaneous machining of several enclosures panels, up to 2380mm height

Panel Shop Automation



60%
labor reductions
vs. traditional cutting



DIN RAILS



CABLE DUCTS



KEY FEATURES



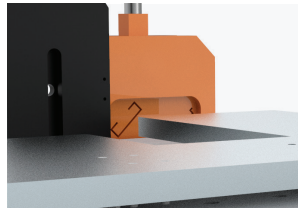
Low costs thanks to nesting software that reduces material waste



Labels are printed to identify the finished parts



Fast, accurate, and easy to use cutting machine



Precise cutting thanks to an automated end-stop

Panel Shop Automation



75%

labor reductions
vs. traditional wire processing



CUTTING



STRIPPING



CRIMPING



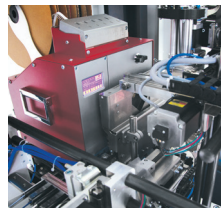
MARKING



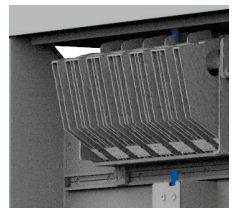
KEY FEATURES



Direct printing to mark each wire with the source and target identification on each side



Fully automated cutting, stripping, crimping, marking and bundling of wires resulting in high productivity and quality





OTHER WIRE PROCESSING MACHINES



PWA1000 is modular wire workstation to semi-automated wire processing including an ergonomic worktable for prefabrication or for direct use in the panel shop



PWA5000 is a mobile and fully automated wire processing solution with a separate label printer ideal for direct use in the panel shop. The touch monitor instructs the operator wire connection details

Increased output thanks to automated storage of up to 12 spools with fast change over times



Touch monitor to operate the machine easily. Interfaces with CAE software such as EPLAN Pro Panel and Smart Wiring



Wires are placed on adhesive tapes in a predefined order to reduce costs through optimizing panel wiring

Panel Shop Automation

Enclosure modification centers

N° of doors	Machinable enclosures, all sides		Machinable panels and mounting plates		Machine footprint		Item no
	H (mm)	W (mm)	H (mm)	W (mm)	W (mm)	D (mm)	
1	Up to 1600	Up to 1250	Up to 1650	Up to 2400	3524	4500	MODC163B
1	Up to 1600	Up to 1250	Up to 1650	Up to 2400	3524	4500	MODC163S
2	Up to 1600	Up to 2200	Up to 1600	Up to 2400	3524	4500	MODC263B
2	Up to 1600	Up to 2200	Up to 1600	Up to 2400	3524	4500	MODC263S
2	Up to 2060	Up to 2200	Up to 2020	Up to 2400	4128	4500	MODC280B
2	Up to 2060	Up to 2200	Up to 2020	Up to 2400	4128	4500	MODC280S
2	Up to 2380	Up to 2200	Up to 2340	Up to 2400	4128	4500	MODC293B
2	Up to 2380	Up to 2200	Up to 2340	Up to 2400	4128	4500	MODC293S

Rail and cable duct cutting machines

Description	Machine footprint		Item no
	W (mm)	D (mm)	
DIN rail and cable duct cutting machine	4216	900	NCCUT2000

Wire processing machines

Description	Machine footprint		Item no
	W (mm)	D (mm)	
Modular wire workstation	1250	800	PWA1000
Wire personal assistant	840	960	PWA5000
Wire processing center	1050	1150	PWA6000

In line with our policy of continuous development, we reserve the right to update our designs at any time. As a result, the product shown may not be identical to the one which is supplied, although it will correspond with the standards mentioned in the brochure. Whilst every care is taken to ensure that the information supplied is correct, we cannot accept any responsibility for errors or changes that may occur.

All dimensions presented in this catalogue are in millimeters (mm) unless otherwise specified.

nVent.com



Our powerful portfolio of brands:

CADDY ERICO HOFFMAN ILSCO RAYCHEM SCHROFF