

CONNECT AND PROTECT

Advanced Customization Type 1

White Paper


nvent

HOFFMAN





Table of contents

Introduction	4
Scope	6
Special dimensions	6
Machining	8
Finish	10
Mounting facilities	14
Assembly	18
Printed panels	19
Annex	20

Introduction

nVent HOFFMAN's state-of-the-art engineering and manufacturing expertise enables modifications of standard enclosures to meet the very specific requirements of individual customers.

This means nVent HOFFMAN can make enclosures with an array of special solutions: holes, threading, cut-outs, increased corrosion resistance, custom colours, transparent windows, ventilation louvres, welded studs, and more.

Advanced Customization includes various customization features, and its purpose is to:

- Attract machine builders who require modified standard enclosures in addition to standard products;
- Attract project business with industrial end-users that often require basic machining for automation and control projects;
- Attract panel builders for larger projects, to reduce the workload often related to machining of the products.

The Advanced Customization is not meant for:

- Delivery of small quantities to customers that do not want to commit, based on the promise of sourcing standard enclosures from nVent HOFFMAN in the near future;
- Delivery of complex customization projects, if the order value is small.

The challenge with customized products is to produce according to the customer requirements, and to streamline communication between Sales and the Technical Office, as well as between Technical Office and other departments within the Supply Chain.

The customer requirements can be:

- Simple requirements: A customer needs a wall mounted enclosure MAS0403021R5 painted in RAL1015, for example;
- Complex requirements: A customer needs a floor standing enclosure that is integrated on the machine frame, it should resist vibration and should withstand the load of a transformer placed in the bottom of the enclosure.

nVent HOFFMAN's Advance Customization is split in two levels of customization and nVent HOFFMAN has called them 'Type 1' for the first level of complexity, and 'Type 2' for the high level complex customization.

There are two reasons for this categorization:

- It defines what Customer Service can and cannot quote without the intervention of the Technical Office.
- It defines what customer has access to Advanced Customization. The customization features classified as Type 1 are rather easy to define and to produce, and the risk and time spent on such a project justifies that these features are available to all customers if the initial guidelines are respected.





Scope

The scope of this document is to show in depth what possible customizations are included in nVent HOFFMAN's Advanced Customization Type 1 service.

Any customization feature not included in this document will be part of the Customization Type 2.

Special dimensions

nVent HOFFMAN enclosures can be manufactured with dimensions not included in the standard offering, but these available dimensions are limited.

The available dimensions depend on the enclosure range. You can find the complete list of available dimensions for Advanced Customization Type 1, per enclosure range, in the Annex (see page 20).





Machining



Machining includes different works made in the different parts of the enclosure, such as mounting plates, doors, roof plates, side or rear panels, and gland plates. Machining can also be done in some accessories, such as plinths.

The machining is done before the powder coating process, which means that the corrosion resistance on the surfaces around the machining will not be affected.

Machining is available for all the materials in nVent HOFFMAN's enclosure portfolio.

Cut outs

Any geometry is available.

The only limitation is the useful area in the part to be machined.



Holes

Any diameter for holes is available.

The only limitation is the useful area in the part to be machined.



Threads

Available threads are the following:

M3 – M4 – M5 – M6 – M8.

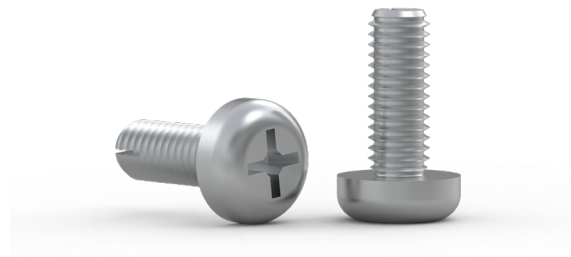
The thread of holes is limited by the material thickness, allowing for a maximum metric thread for each thickness.

1.2 mm thickness: Maximum Metric M4

1.5 mm thickness: Maximum Metric M5

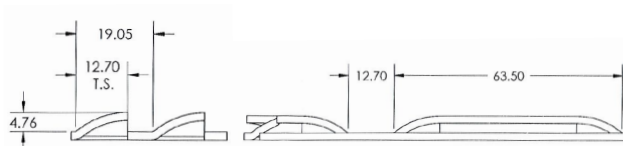
2.0 mm thickness: Maximum Metric M8

3.0 mm thickness: Maximum Metric M8



Ventilation louvres

Available for parts made in steel, up to 2 mm thickness.



Finish



Powder coating of enclosures and accessories can be customized in different ways and, even some products which are not powder coated as standard, can be painted.

General limitations for finish customization:

- Finish can not be customized for parts with dimensions larger than 2200x1600x1000 mm.
- The same part of an enclosure or accessory (door, body, side panel, etc.) can not be painted with different features (colour, finish, etc.)
- Parts which are powder coated as standard can not be delivered without the powder coat.

In the next section we will present the available powder coating customizable features, with the corresponding limitations: colour, finish, UV resistance, corrosion resistance.

Colour

Enclosures or accessories powder coating can be required in a different colour than the standard RAL 7035, for enclosures and almost all the accessories, and the RAL 7022 for plinths.

The available colours in Advanced Customization Type 1 are the following:

								
RAL7035	RAL1023	RAL3004	RAL4007	RAL5019	RAL6015	RAL7004	RAL7037	RAL8016
								
RAL7032	RAL1024	RAL3005	RAL4008	RAL5020	RAL6016	RAL7005	RAL7038	RAL8017
								
RAL1000	RAL1027	RAL3007	RAL4009	RAL5021	RAL6017	RAL7006	RAL7039	RAL8019
								
RAL1001	RAL1028	RAL3009	RAL4010	RAL5022	RAL6018	RAL7008	RAL7040	RAL8022
								
RAL1002	RAL1032	RAL3011	RAL5000	RAL5023	RAL6019	RAL7009	RAL7042	RAL8023
								
RAL1003	RAL1033	RAL3012	RAL5001	RAL5024	RAL6020	RAL7010	RAL7043	RAL8024
								
RAL1004	RAL1034	RAL3014	RAL5002	RAL6000	RAL6021	RAL7011	RAL7044	RAL8025
								
RAL1005	RAL2000	RAL3015	RAL5003	RAL6001	RAL6022	RAL7012	RAL7045	RAL8028
								
RAL1006	RAL2001	RAL3016	RAL5004	RAL6002	RAL6024	RAL7013	RAL7046	RAL9001
								
RAL1007	RAL2002	RAL3017	RAL5005	RAL6003	RAL6025	RAL7015	RAL7047	RAL9002
								
RAL1011	RAL2003	RAL3018	RAL5007	RAL6004	RAL6026	RAL7016	RAL8000	RAL9003
								
RAL1012	RAL2004	RAL3020	RAL5008	RAL6005	RAL6027	RAL7021	RAL8001	RAL9004
								
RAL1013	RAL2008	RAL3022	RAL5009	RAL6006	RAL6028	RAL7022	RAL8002	RAL9005
								
RAL1014	RAL2009	RAL3027	RAL5010	RAL6007	RAL6029	RAL7023	RAL8003	RAL9010
								
RAL1015	RAL2010	RAL3031	RAL5011	RAL6008	RAL6032	RAL7024	RAL8004	RAL9011
								
RAL1016	RAL2011	RAL4001	RAL5012	RAL6009	RAL6033	RAL7026	RAL8007	RAL9016
								
RAL1017	RAL2012	RAL4002	RAL5013	RAL6010	RAL6034	RAL7030	RAL8008	RAL9017
								
RAL1018	RAL3000	RAL4003	RAL5014	RAL6011	RAL7000	RAL7031	RAL8011	RAL9018
								
RAL1019	RAL3001	RAL4004	RAL5015	RAL6012	RAL7001	RAL7033	RAL8012	
								
RAL1020	RAL3002	RAL4005	RAL5017	RAL6013	RAL7002	RAL7034	RAL8014	
								
RAL1021	RAL3003	RAL4006	RAL5018	RAL6014	RAL7003	RAL7036	RAL8015	

Powder coating finish

The powder coating finish is available as:

- Structured
- Fine finish is available in Advance Customization Type 2

Smooth and metallic finish are not available.

Powder coating for outdoor applications

For outdoor enclosures and accessories exposed to the sunlight there is the possibility to change the standard epoxy-polyester powder by 100% polyester powder, providing UV resistance.

Corrosion resistance

For harsh environments with risk of corrosion a primer is available, which is applied before the external powder coating. This primer increases the corrosion resistance from 480 hours up to 1000 hours of salt spray test, according to ASTM B – 117:97.





Mounting facilities

Different type of fasteners are included in the mounting facilities, allowing to fix almost any equipment to the enclosures.

Available mounting facilities:

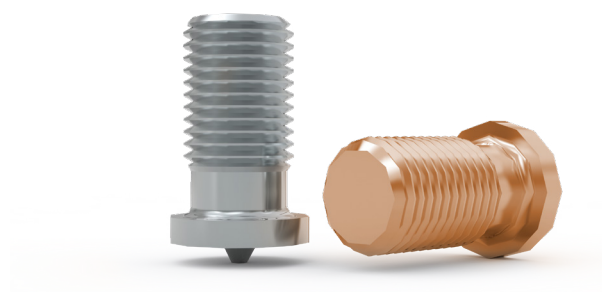
- Welded studs
- Press nuts
- Open rivet nuts
- Blind rivet nuts



Welded studs

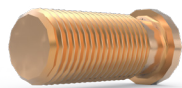
Welded studs are available in two different materials:

- Mild steel, copper-plated
- Stainless steel





Based on the material and metric of the stud, there is a limited number of available lengths:



Mild steel, copper-plated

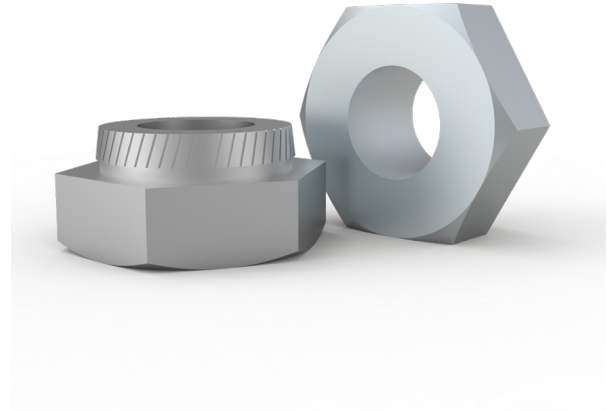
Stainless steel

Metric	Available lengths (mm)	Available lengths (mm)
M3	6 - 8 - 10 - 12 - 15 - 16 - 20 - 25 - 30	6 - 15
M4	6 - 8 - 10 - 12 - 15 - 20 - 25 - 30 - 40	6 - 8
M5	8 - 10 - 12 - 15 - 16 - 20	8 - 10 - 16 - 25 - 35 - 40
M6	8 - 10 - 12 - 13 - 15 - 16 - 20 - 25 - 30 - 35 - 40	10 - 12 - 13 - 16 - 20 - 40
M8	10 - 12 - 15 - 16 - 18 - 20 - 25 - 30 - 35 - 40	12 - 16 - 18 - 24 - 25 - 30 - 35 - 45 - 50

Press nuts

Press nuts represent a solution when metal sheets need to be provided with threads. Two different materials are available:

- Zinc plated steel
- Stainless steel



Open rivet nuts

Open rivet nuts are available in two different materials:

- Zinc plated steel
- Stainless steel



Blind rivet nuts

Blind rivet nuts are available in two different materials:

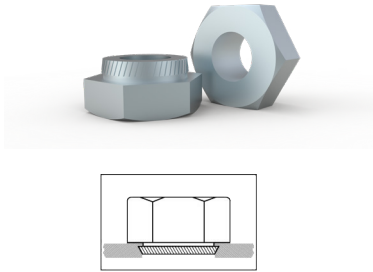
- Zinc plated steel
- Stainless steel



Based on the material, there is a limited number of available metrics:

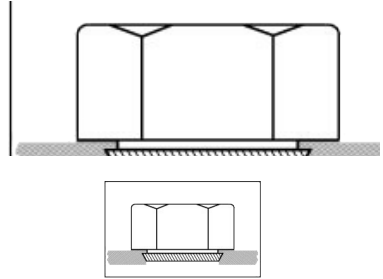
Zinc plated steel

- _____ Metric
- _____ M3
- _____ M4
- _____ M5
- _____ M6
- _____ M8
- _____ M10
- _____ M12



Stainless steel

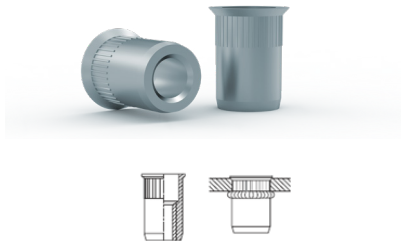
- _____ Metric
- _____ M3
- _____ M4
- _____ M5
- _____ M6
- _____ M12



Based on the material, there is a limited number of available metrics:

Zinc plated steel

- _____ Metric
- _____ M3
- _____ M4
- _____ M5
- _____ M6
- _____ M8
- _____ M10
- _____ M12



Stainless steel

- _____ Metric
- _____ M3
- _____ M4
- _____ M5
- _____ M6
- _____ M10
- _____ M12



Based on the material, there is a limited number of available metrics:

Zinc plated steel

- _____ Metric
- _____ M6
- _____ M8



Stainless steel

- _____ Metric
- _____ M4
- _____ M5
- _____ M6
- _____ M8
- _____ M12



Assembly



The thinking behind the Mechanical Assembly services offered is that nVent HOFFMAN wants to help customers maintain a competitive price and sustain a healthy bottom line.

The purpose of the service is to help customers reduce their costs, by taking over some of the labour-intensive assembly work, when it comes to standard or customized enclosures.

The Mechanical Assembly services include the assembly of standard accessories, and baying of standard enclosures.

The Mechanical Assembly services in Advanced Customization Type 1 include the assembly of standard accessories, and the baying of standard enclosures. Any *additional assembly will be part of Advanced Customization Type 2.

* The mechanical assembly services never include mounting of DIN-rails components, wiring, or complete assembly of a panel.

Printed panels



Printed panels customization service offers digital printing on panels, which means we can provide our customers with fully finished customized panels, with consistent quality and total reliability.

You can find below the list of parts which can be printed:

- Floor standing: door, removable panels;
- Wall mounted: door, gland plates;
- Terminal boxes: cover;
- HMI consoles: doors, lids and removable panels;

The limitation for the printed panels service are the following:

- The service is not available for stainless steel surfaces;
- The maximum height of the panel to be printed is 64 mm;
- Maximum area to be printed is of 1600 x 3000 mm

Annex

This Annex presents the available dimensions in Advanced Customization Type 1.

Floor Standing Enclosures
 Steel Range | Mild Steel
 Combinable, Single Door | MCS

Height	Width	Depth						
		400	500	600	700	800	900	1000
1400	400	-	-	-	-	-	-	-
	500	-	-	-	-	-	-	-
	600	■	■	■	-	■	-	■
	700	-	-	-	■	-	-	-
	800	■	■	■	-	■	-	■
	900	-	-	-	-	-	-	-
	1000	■	-	-	-	-	-	-
1600	400	-	-	-	-	-	-	-
	500	-	-	-	-	-	-	-
	600	■	■	■	-	■	-	-
	700	-	-	-	■	-	-	■
	800	■	■	■	-	■	-	■
	900	-	-	-	-	-	-	-
1800	1000	■	■	■	■	■	-	■
	400	■	■	■	-	■	-	-
	500	-	■	-	-	-	-	-
	600	■	■	■	-	■	-	■
	700	-	-	-	-	■	-	-
2000	800	■	■	■	-	■	-	■
	900	-	■	■	-	■	-	-
	1000	■	■	■	-	■	-	■
	400	■	■	■	-	■	-	-
	500	-	■	-	-	-	-	-
	600	■	■	■	-	■	-	■
2200	700	■	-	■	-	■	-	■
	800	■	■	■	■	■	-	■
	900	-	-	■	-	-	-	-
	1000	■	■	■	-	■	-	■



Floor Standing Enclosures
 Steel Range | Mild Steel
 Combinable, Double Door | MCD

Height	Width	Depth						
		400	500	600	700	800	900	1000
1400	800	■	-	-	-	■	-	-
	1000	-	-	-	-	-	-	-
	1200	-	-	■	-	-	-	-
	1400	-	-	■	-	-	-	-
1600	800	■	■	-	-	-	-	-
	1000	■	■	■	-	-	-	-
	1200	■	■	■	-	-	-	-
	1400	-	-	-	-	-	-	-
1800	800	■	■	■	-	■	-	-
	1000	■	■	■	-	■	-	-
	1200	■	■	■	-	■	-	-
	1400	-	■	■	-	■	-	-
2000	800	■	■	■	-	■	-	-
	1000	■	■	■	-	■	-	-
	1200	■	■	■	-	■	-	-
	1400	■	■	■	-	-	-	-
2200	800	-	-	■	-	■	-	-
	1000	■	■	■	-	■	-	-
	1200	■	■	■	-	■	-	-
	1400	-	■	-	-	■	-	-
1600	1600	-	■	■	-	■	-	-



Floor Standing Enclosures
 Steel Range | Mild Steel
 Compact, Single Door | MKS

Height	Width	Depth			
		300	400	500	600
1200	600	-	-	-	-
	700	-	-	-	-
	800	-	■	-	-
	900	-	-	-	-
	1000	-	-	-	■
1400	600	-	-	-	-
	700	-	-	-	-
	800	-	-	-	-
	900	-	-	-	-
	1000	-	■	■	-
1600	600	■	■	-	-
	700	-	-	-	-
	800	■	■	■	■
	900	-	-	-	-
	1000	■	■	■	■
1800	600	■	■	-	-
	700	-	-	-	-
	800	■	■	■	■
	900	-	-	-	-
	1000	■	■	■	■
2000	600	■	■	-	■
	700	-	-	-	-
	800	■	■	■	■
	900	-	-	-	-
	1000	■	■	■	■



Floor Standing Enclosures
 Steel Range | Mild Steel
 Compact, Double Door | MKD

Height	Width	Depth			
		300	400	500	600
1200	800	-	-	-	-
	1000	-	-	-	-
	1200	-	-	-	-
	1400	-	-	-	-
1400	1600	-	■	■	-
	800	-	-	-	-
	1000	-	■	-	-
	1200	-	-	-	-
1600	1400	-	-	-	-
	1600	-	■	-	-
	800	-	-	-	-
	1000	-	■	■	■
1800	1200	-	■	■	■
	1400	-	■	-	-
	1600	-	■	■	-
	800	-	■	-	-
2000	1000	-	-	-	-
	1200	-	■	■	■
	1400	-	■	-	-
	1600	-	■	■	-



Floor Standing Enclosures
 Steel Range | Stainless Steel
 Combinable, Single Door | MCSS

Height	Width	Depth				
		400	500	600	800	1000
1400	600	■	■	■	-	-
	700	-	-	-	-	-
	800	■	■	■	■	■
	1000	-	-	-	-	-
1600	600	■	■	■	-	-
	700	-	-	-	-	-
	800	■	■	■	■	■
	1000	■	■	■	■	■
1800	600	■	■	■	-	-
	700	-	-	-	-	-
	800	■	■	■	■	■
	1000	■	■	■	■	■
2000	600	■	■	■	-	-
	700	-	-	-	-	-
	800	■	■	■	■	■
	1000	■	■	■	■	■
2200	600	-	-	-	-	-
	700	-	-	-	-	-
	800	-	-	-	-	-
	1000	-	-	-	-	-



Floor Standing Enclosures
 Steel Range | Stainless Steel
 Combinable, Double Door | MCDS

Height	Width	Depth				
		400	500	600	800	1000
1400	800	-	-	-	-	-
	1000	-	-	-	-	-
	1200	-	-	-	-	-
	1400	-	-	-	-	-
	1600	-	-	-	-	-
1600	800	-	-	-	-	-
	1000	-	■	-	-	-
	1200	-	■	-	-	-
	1400	-	-	-	-	-
	1600	-	■	-	-	-
1800	800	-	-	-	-	-
	1000	-	■	■	-	-
	1200	-	■	■	-	-
	1400	-	-	-	-	-
	1600	-	■	■	-	-
2000	800	-	-	-	-	-
	1000	-	■	■	■	-
	1200	-	■	■	■	-
	1400	-	-	-	-	-
	1600	-	■	■	■	-
2200	800	-	-	-	-	-
	1000	-	-	-	-	-
	1200	-	-	-	-	-
	1400	-	-	-	-	-
	1600	-	-	-	-	-



Floor Standing Enclosures
 Steel Range | Stainless Steel
 Compact, Single Door | EKSS

Height	Width	Depth					
		300	400	500	600	700	800
1200	600	-	■	■	■	-	-
	700	-	-	-	-	-	-
	800	-	■	■	■	-	-
	900	-	-	-	-	-	-
	1000	-	-	-	-	-	-
1400	600	-	■	■	■	-	-
	700	-	-	-	-	-	-
	800	-	■	■	■	-	-
	900	-	-	-	-	-	-
	1000	-	-	-	-	-	-
1600	600	-	■	■	■	-	-
	700	-	-	-	-	-	-
	800	-	■	■	■	-	-
	900	-	-	-	-	-	-
	1000	-	■	■	■	-	-
1800	600	-	■	■	■	-	-
	700	-	-	-	-	-	-
	800	-	■	■	■	-	■
	900	-	-	-	-	-	-
	1000	-	■	■	■	-	■
2000	600	-	■	■	■	-	-
	700	-	-	-	-	-	-
	800	-	■	■	■	-	■
	900	-	-	-	-	-	-
	1000	-	■	■	■	-	■



Floor Standing Enclosures
 Steel Range | Stainless Steel
 Compact, Double Door | EKDS

Height	Width	Depth					
		300	400	500	600	700	800
1200	800	-	-	-	-	-	-
	1000	-	■	■	-	-	-
	1200	-	■	■	-	-	-
	1400	-	-	-	-	-	-
1400	1600	-	■	■	-	-	-
	800	-	-	-	-	-	-
	1000	-	■	■	■	-	-
	1200	-	■	■	■	-	-
1600	1400	-	-	-	■	-	-
	1600	-	■	■	■	-	-
	800	-	-	-	-	-	-
	1000	-	■	■	■	-	-
1800	1200	-	■	■	■	-	-
	1400	-	-	-	■	-	■
	1600	-	■	■	■	-	-
	800	-	-	-	-	-	-
2000	1000	-	■	■	■	-	-
	1200	-	■	■	■	-	-
	1400	-	-	-	■	-	-
	1600	-	■	■	■	-	■



Wall Mounted Enclosures
 Steel Range | Mild Steel
 Single door | MAS

Height	Width	Depth				
		155	210	260	300	400
200	200	■	-	-	-	-
	250	-	-	-	-	-
	300	-	-	-	-	-
	380	-	-	-	-	-
	400	-	-	-	-	-
	500	-	-	-	-	-
	600	-	-	-	-	-
	700	-	-	-	-	-
	760	-	-	-	-	-
	800	-	-	-	-	-
250	200	■	-	-	-	-
	250	■	■	-	-	-
	300	■	■	-	-	-
	380	-	-	-	-	-
	400	-	■	-	-	-
	500	-	-	-	-	-
	600	-	-	-	-	-
	700	-	-	-	-	-
	760	-	-	-	-	-
	800	-	-	-	-	-
300	200	■	-	-	-	-
	250	■	■	-	-	-
	300	■	■	-	-	-
	380	-	-	-	-	-
	400	■	-	-	-	-
	500	■	■	-	-	-
	600	-	-	-	-	-
	700	-	-	-	-	-
	760	-	-	-	-	-
	800	-	-	-	-	-
350	200	-	-	-	-	-
	250	■	-	-	-	-
	300	-	-	-	-	-
	380	-	-	-	-	-
	400	-	-	-	-	-
	500	-	-	-	-	-
	600	-	-	-	-	-
	700	-	-	-	-	-
	760	-	-	-	-	-
	800	-	-	-	-	-



Height	Width	Depth				
		155	210	260	300	400
380	200	-	-	-	-	-
	250	-	-	-	-	-
	300	-	-	-	-	-
	380	-	■	-	■	-
	400	-	-	-	-	-
	500	-	-	-	-	-
	600	-	-	-	-	-
	700	-	-	-	-	-
	760	-	-	-	-	-
	800	-	-	-	-	-
400	200	-	-	-	-	-
	250	-	-	-	-	-
	300	■	■	■	-	-
	380	-	-	-	-	-
	400	■	■	■	■	-
	500	■	■	■	■	-
	600	-	■	■	■	-
	700	-	-	-	-	-
	760	-	-	-	-	-
	800	-	■	■	■	-
500	200	-	-	-	-	-
	250	-	-	-	-	-
	300	■	■	-	-	-
	380	-	-	-	-	-
	400	■	■	■	■	-
	500	■	■	-	■	-
	600	-	■	■	-	-
	700	-	■	■	■	-
	760	-	-	-	-	-
	800	-	-	-	-	-
600	200	-	-	-	-	-
	250	-	-	-	-	-
	300	■	■	-	■	-
	380	-	-	-	-	-
	400	■	■	■	■	■
	500	■	■	■	■	■
	600	-	■	-	■	■
	700	-	■	-	-	-
	760	-	-	-	-	-
	800	-	■	■	■	■
700	200	-	-	-	-	-
	250	-	-	-	-	-
	300	-	-	-	-	-
	380	-	-	-	-	-
	400	-	■	■	■	-
	500	-	■	■	■	■
	600	-	■	■	-	-
	700	-	-	-	-	-
	760	-	-	-	-	-
	800	-	■	■	■	-

Height	Width	Depth				
		155	210	260	300	400
760	200	-	-	-	-	-
	250	-	-	-	-	-
	300	-	-	-	-	-
	380	-	-	-	-	-
	400	-	-	-	-	-
	500	-	-	-	-	-
	600	-	■	-	■	-
	700	-	-	-	-	-
	760	-	■	-	■	-
	800	-	-	-	-	-
800	200	-	-	-	-	-
	250	-	-	-	-	-
	300	-	-	-	-	-
	380	-	-	-	-	-
	400	-	■	■	■	-
	500	-	-	-	■	■
	600	-	■	■	■	■
	700	-	-	-	-	-
	760	-	-	-	-	-
	800	-	-	-	-	-
1000	200	-	-	-	-	-
	250	-	-	-	-	-
	300	-	-	-	-	-
	380	-	-	-	-	-
	400	-	-	-	-	-
	500	-	-	-	■	-
	600	-	-	■	■	■
	700	-	-	-	■	■
	760	-	-	-	-	-
	800	-	-	■	■	■
1200	200	-	-	-	-	-
	250	-	-	-	-	-
	300	-	-	-	-	-
	380	-	-	-	-	-
	400	-	-	-	-	-
	500	-	-	-	-	-
	600	-	-	-	■	■
	700	-	-	-	-	-
	760	-	-	-	-	-
	800	-	-	-	■	■
1400	200	-	-	-	-	-
	250	-	-	-	-	-
	300	-	-	-	-	-
	380	-	-	-	-	-
	400	-	-	-	-	-
	500	-	-	-	-	-
	600	-	-	-	■	■
	700	-	-	-	-	-
	760	-	-	-	-	-
	800	-	-	-	■	■

Wall Mounted Enclosures
 Steel Range | Mild Steel
 Double door | MAD

Height	Width	Depth			
		210	260	300	400
600	800	■	■	■	-
	1000	■	■	■	■
	1200	■	■	■	■
760	800	-	-	-	-
	1000	■	-	■	-
	1200	-	-	■	-
800	800	-	■	■	-
	1000	-	■	■	■
	1200	-	■	■	■
1000	800	-	-	■	-
	1000	-	-	■	■
	1200	-	-	■	■
1200	800	-	-	■	-
	1000	-	-	■	■
	1200	-	-	■	-
1400	800	-	-	-	-
	1000	-	-	■	-
	1200	-	-	-	-





Wall Mounted Enclosures
 Steel Range | Stainless Steel
 Single door | ASR

Height	Width	Depth			
		150	210	300	400
180	200	-	-	-	-
	240	■	-	-	-
	250	-	-	-	-
	300	-	-	-	-
	360	-	-	-	-
	380	-	-	-	-
	400	-	-	-	-
	500	-	-	-	-
	600	-	-	-	-
	700	-	-	-	-
200	200	-	-	-	-
	240	-	-	-	-
	250	-	-	-	-
	300	■	-	-	-
	360	-	-	-	-
	380	-	-	-	-
	400	■	-	-	-
	500	-	-	-	-
	600	-	-	-	-
	700	-	-	-	-
240	200	-	-	-	-
	240	■	-	-	-
	250	-	-	-	-
	300	-	-	-	-
	360	■	-	-	-
	380	-	-	-	-
	400	-	-	-	-
	500	-	-	-	-
	600	-	-	-	-
	700	-	-	-	-
250	200	-	-	-	-
	240	-	-	-	-
	250	-	-	-	-
	300	-	-	-	-
	360	-	-	-	-
	380	-	-	-	-
	400	-	-	-	-
	500	-	-	-	-
	600	-	-	-	-
	700	-	-	-	-



Height	Width	Depth			
		150	210	300	400
300	200	■	-	-	-
	240	-	-	-	-
	250	■	■	-	-
	300	■	■	-	-
	360	-	-	-	-
	380	-	-	-	-
	400	■	■	-	-
	500	-	-	-	-
	600	-	■	-	-
	700	-	-	-	-
360	200	-	-	-	-
	240	■	-	-	-
	250	-	-	-	-
	300	-	-	-	-
	360	-	-	-	-
	380	-	-	-	-
	400	-	-	-	-
	500	-	-	-	-
	600	-	-	-	-
	700	-	-	-	-
380	200	-	-	-	-
	240	-	-	-	-
	250	-	-	-	-
	300	-	-	-	-
	360	-	-	-	-
	380	■	■	-	-
	400	-	-	-	-
	500	-	-	-	-
	600	-	-	-	-
	700	-	-	-	-
400	200	-	-	-	-
	240	-	-	-	-
	250	-	-	-	-
	300	■	■	-	-
	360	-	-	-	-
	380	-	-	-	-
	400	■	■	■	-
	500	■	■	-	-
	600	-	■	■	-
	700	-	-	-	-
760	200	-	-	-	-
	240	-	-	-	-
	250	-	-	-	-
	300	-	-	-	-
	360	-	-	-	-
	380	-	-	-	-
	400	-	-	-	-
	500	-	-	-	-
	600	-	-	-	-
	700	-	-	-	-
800	200	-	-	-	-
	240	-	-	-	-
	250	-	-	-	-
	300	-	-	-	-
	360	-	-	-	-
	380	-	-	-	-
	400	-	-	-	-
	500	-	-	-	-
	600	-	-	-	-
	700	-	-	-	-

Height	Width	Depth			
		150	210	300	400
500	200	-	-	-	-
	240	-	-	-	-
	250	-	-	-	-
	300	■	■	-	-
	360	-	-	-	-
	380	-	-	-	-
	400	■	■	■	-
	500	-	■	■	-
	600	-	-	-	-
	700	-	-	-	-
600	200	-	-	-	-
	240	-	-	-	-
	250	-	-	-	-
	300	-	■	-	-
	360	-	-	-	-
	380	-	-	-	-
	400	■	■	■	-
	500	■	■	■	■
	600	-	■	■	■
	700	-	■	■	-
700	200	-	-	-	-
	240	-	-	-	-
	250	-	-	-	-
	300	-	-	-	-
	360	-	-	-	-
	380	-	-	-	-
	400	-	■	-	-
	500	-	■	■	-
	600	-	■	■	-
	700	-	-	■	■
760	200	-	-	-	-
	240	-	-	-	-
	250	-	-	-	-
	300	-	-	-	-
	360	-	-	-	-
	380	-	-	-	-
	400	-	-	-	-
	500	-	-	-	-
	600	-	■	■	-
	700	-	-	-	-
800	200	-	-	-	-
	240	-	-	-	-
	250	-	-	-	-
	300	-	-	-	-
	360	-	-	-	-
	380	-	-	-	-
	400	-	-	-	-
	500	-	-	-	-
	600	-	-	-	-
	700	-	-	-	-

Height	Width	Depth			
		150	210	300	400
800	200	-	-	-	-
	240	-	-	-	-
	250	-	-	-	-
	300	-	-	-	-
	360	-	-	-	-
	380	-	-	-	-
	400	-	■	■	-
	500	-	■	■	■
	600	-	■	■	■
	700	-	-	-	-
1000	200	-	-	-	-
	240	-	-	-	-
	250	-	-	-	-
	300	-	-	-	-
	360	-	-	-	-
	380	-	-	-	-
	400	-	-	-	-
	500	-	-	■	-
	600	-	-	■	■
	700	-	-	-	-
1200	200	-	-	-	-
	240	-	-	-	-
	250	-	-	-	-
	300	-	-	-	-
	360	-	-	-	-
	380	-	-	-	-
	400	-	-	-	-
	500	-	-	-	-
	600	-	-	■	■
	700	-	-	■	■
1400	200	-	-	-	-
	240	-	-	-	-
	250	-	-	-	-
	300	-	-	-	-
	360	-	-	-	-
	380	-	-	-	-
	400	-	-	-	-
	500	-	-	-	-
	600	-	-	■	■
	700	-	-	-	-
800	200	-	-	-	-
	240	-	-	-	-
	250	-	-	-	-
	300	-	-	-	-
	360	-	-	-	-
	380	-	-	-	-
	400	-	-	-	-
	500	-	-	-	-
	600	-	-	-	-
	700	-	-	-	-

Wall Mounted Enclosures
 Steel Range | Stainless Steel
 Double door | ADR

Height	Width	Depth		
		210	260	300
600	800	■	■	■
	1000	■	■	■
	1200	-	■	-
760	800	-	-	-
	1000	■	■	■
	1200	-	-	-
800	800	-	-	-
	1000	-	■	■
	1200	-	■	■
1000	800	-	-	-
	1000	-	■	■
	1200	-	■	■
1200	800	-	-	-
	1000	-	■	■
	1200	-	■	■





Terminal Boxes

Steel Range

Mild steel terminal box | STB

Height	Width	Depth				
		80	100	120	150	200
150	150	■	■	■	-	-
	200	-	■	-	-	-
	300	■	-	■	-	-
	400	-	-	-	-	-
	500	-	-	-	-	-
	600	-	-	-	-	-
	800	-	-	-	-	-
	150	-	-	-	-	-
200	200	■	-	■	■	-
	300	■	-	■	■	-
	400	■	-	■	■	-
	500	-	-	■	-	-
	600	-	-	■	-	-
	800	-	-	■	-	-
	150	-	-	-	-	-
300	200	-	-	-	-	-
	300	■	-	■	■	-
	400	-	-	■	■	-
	500	-	-	■	■	-
	600	-	-	■	■	-
	800	-	-	-	■	-
	150	-	-	-	-	-
	200	-	-	-	-	-
400	300	-	-	-	-	-
	400	-	-	■	■	■
	500	-	-	-	■	■
	600	-	-	■	■	■
	800	-	-	■	■	■



Terminal Boxes

Steel Range

Stainless steel terminal box | SSTB

Height	Width	Depth				
		80	100	120	150	200
150	150	■	■	■	-	-
	200	-	■	-	-	-
	300	■	-	■	-	-
	400	-	-	-	-	-
	500	-	-	-	-	-
	600	-	-	-	-	-
	800	-	-	-	-	-
	150	-	-	-	-	-
200	200	■	-	■	■	-
	300	■	-	■	■	-
	400	■	-	■	■	-
	500	-	-	■	-	-
	600	-	-	■	-	-
	800	-	-	■	-	-
	150	-	-	-	-	-
300	200	-	-	-	-	-
	300	■	-	■	■	-
	400	-	-	■	■	-
	500	-	-	■	■	-
	600	-	-	■	■	-
	800	-	-	-	■	-
	150	-	-	-	-	-
400	200	-	-	-	-	-
	300	-	-	-	-	-
	400	-	-	■	■	■
	500	-	-	-	■	■
	600	-	-	■	■	■
	800	-	-	■	■	■



Our powerful portfolio of brands:

CADDY ERICO HOFFMAN RAYCHEM SCHROFF TRACER



eldon.com
HOFFMAN.nVent.com