

## DOUBLE-HINGED WALL-MOUNT CABINET

### BROAD SELECTION OF MODELS SUPPORT HEAVY-DUTY LOAD CAPACITIES, DELIVER TIME-SAVING FEATURES

Versatile AccessPlus wall-mount cabinets handle network equipment weighing 250 to 500 lbs. (113 to 226 kg) and are available in a wide variety of cabinet sizes. The rugged cabinets feature quick-release latching for easy access to the backside of mounted equipment and latch-free sides allow cabinet installation in tight spaces and corners.

Along with standard cable entry knockouts, AccessPlus is available with a gland plate, designed to accommodate pre-wired patch panel installation. The gland plate is the ideal solution for retrofit applications.



### KEY FEATURES

- **Best-in-class aesthetics**  
with large window, rounded edges and hidden welds provide an appealing appearance
- **Tool-free hinges**  
allow quick separation of back and center section for easy one-person installation
- **28-in. (711 mm) wide models**  
offer more cable capacity and include vertical cable managers
- **Better equipment access**  
via quick-release latching makes opening and closing the center section easy

- **Window-door models**  
offer tinted safety glass door options for enhanced clarity, strength and scratch resistance
- **Phosphatized steel coated**  
with RAL 9005 black light-textured, low-gloss polyester powder paint
- **Solid-door models**  
offer increased security as internal components are concealed

### APPLICATIONS INCLUDE:

- Security
- Broadcasting
- A/V
- Intermediate distribution frame
- Remote networking access
- Retail
- Education

## SELECTING YOUR SOLUTION

### FRONT DOOR

- Door opens 140°
- Field-reversible (left or right) hinge
- Quarter-turn key lock, two keys included

### CENTER SECTION

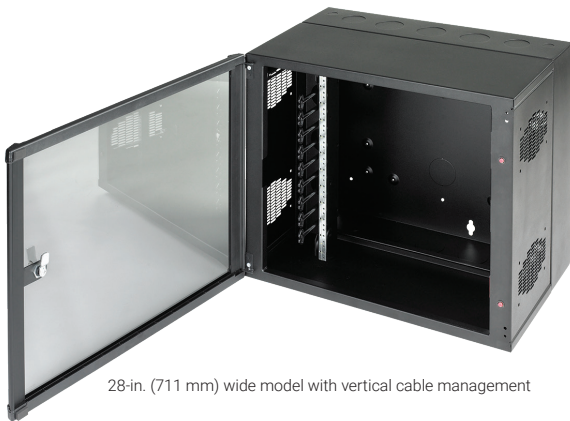
- Solid top of center section provides protection against falling debris
- Ventilated sides (fans can be added)
- Self-latching closure connects center section to wall section
- Self-alignment ramp supports center section to wall section
- Heavy-duty center-to-rear section hinge with quick-release self-retained hinge pin simplifies wall installation

### RACK-MOUNTING ANGLES

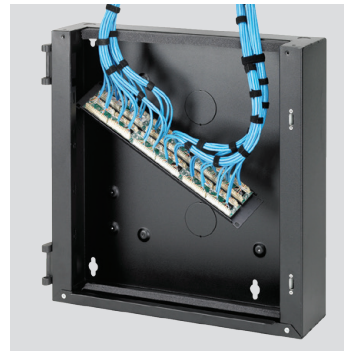
- EIA universal spaced 19-in. (483 mm) rack-mounting holes
- Tapped 10-32 holes, 20 mounting screws included

### REAR WALL SECTION

- Radius corners; no sharp edges
- Available with knockouts or gland plates
- Raised pads for accessory mounting
- Cable tie-down points for cable management
- Keyhole mounting holes allow wall section to be mounted over fasteners and facilitates installation
- Three cable-entry grommets



28-in. (711 mm) wide model with vertical cable management



Gland-plate option provides an ideal solution for many retrofit applications



### North America

Minneapolis, MN  
Tel: +1.763.421.2240

Mexico, D.F.  
Tel: +52.55.5280.1449

Toronto, Canada  
Tel: +1.416.289.2770

### South America

Sao Paulo, Brazil  
Tel: +55.11.5184.2100

Boitura, Brazil  
Tel: +55.15.3363.9148

### Europe

Betschdorf, France  
Tel: +33.3.88.90.64.90

Straubenhardt, Germany  
Tel: +49.7082.794.0

Dzierzoniow, Poland  
Tel: +48.74.64.63.900

Lainate, Italy  
Tel: +39.02.932.7141

### Middle East & Africa

Dubai, United Arab  
Emirates  
Tel: +971.4.378.1700

Bangalore, India  
Tel: +91.80.6715.2001

### Asia

Shanghai, P.R. China  
Tel: +86.21.2412.6943

Singapore  
Tel: +65.6768.5800

Shin-Yokohama, Japan  
Tel: +81.45.476.0271

Seoul, Korea  
Tel: +82.2.2129.7755

Qingdao  
Tel: +86.532.8771.6101



[nVent.com](http://nVent.com)

Our powerful portfolio of brands:

**CADDY ERICO HOFFMAN RAYCHEM SCHROFF TRACER**