



CONNECT AND PROTECT

Oil and Gas catalogue

Presenting enclosures and accessories for Oil and Gas applications.


nvent

HOFFMAN



Table of contents

- Floor Standing Enclosures 4
- Wall Mounted Enclosures..... 60
- Certification and end-user approval..... 72
- Transporting and Lifting 74
- Procurement..... 80



01 Floor Standing Enclosures

Mild Steel

- Single door enclosures, combinable, MCS..... 10
- Double door enclosures, combinable, MCD 16
- General accessories28
- Mounting plate28
- Full height doors and locking systems30
- Lifting and baying.....34

Stainless Steel

- Single door enclosures, combinable, MCSS.....40
- General accessories 50
- Mounting plate 50
- Full height doors and locking systems51
- Lifting and baying.....56

Floor Standing Enclosures

Product Development Drivers



01

REDUCED ASSEMBLY TIME

nVent HOFFMAN's latest quick fixation baying and mounting plate brackets reduce the required assembly time with 70%, increasing your competitive edge.



02

ONE MAN INSTALLATION

Use the side panel as an example. One man installation is what drives our product development. Another example is the mounting plate retainer on the mounting plate bracket.



03

HIGH LEVEL OF PROTECTION

nVent HOFFMAN invests in a high level of protection for its enclosures, therefore all 316L enclosures have been provided with a silicon gasket, offering the maximum protection available.



04

HIGH RIGIDITY

A strong profile design, an innovative 'S' bend, and a significant increase in material thickness are the characteristics that define the most recent side panels from nVent HOFFMAN.

And to make installation fast and easy, nVent HOFFMAN's customers also benefit from a smart hanging design feature, that allows the side panels to be hung from the enclosure using a unique bend across the top edge of the side panel.



05

AESTHETICS AND FEEL

We differentiate our enclosures through superior design and a sleek appearance. The locking system, corner forming, and perfect grinding are just a few examples of bringing aesthetics to the next level.



Floor Standing | Mild Steel Range

The enclosures in the floor standing mild steel range, with single or double door versions, are epoxy polyester coated in light grey, RAL 7035. Corrosion resistance is guaranteed thanks to internally conducted salt spray tests, which follow the standard ASTM B117:11.

These enclosures are typically used for indoor applications, such as machine control panels, automation and control of manufacturing lines, or for power and distribution panels.

The welded frame in each enclosure makes it strong and rigid and well suited for heavy duty applications. A wide range of accessories are available to allow for many different configurations. The same accessories may be used on all enclosure versions, since all enclosures are designed around the same platform. This makes engineering easier and allows for stock reduction with panel builders and distributors. The assembly of the enclosures and accessories is easy, which contributes to reduced assembly time and increased competitiveness.

This enclosure range has been designed to comply with the relevant standard for empty enclosures, IEC 62208. Compliance to this standard by nVent HOFFMAN is regularly audited by an independent laboratory, DEKRA, which allows nVent HOFFMAN to attach the KEMA-KEUR mark to its floor standing mild steel enclosures.





Maximum protection for the user and the equipment is achieved thanks to high protection degrees, IP 55 according to IEC 60529, and IK 10 according to IEC 62262.

All enclosures in the range have UL certification for the US, CSA for Canada, GOST and EAC for Russia and others, which makes export easier, especially for machine builders.

nVent HOFFMAN Holding AB is an approved supplier of indoor and outdoor enclosures to SAUDI ARAMCO, holding Vendor ID No. 10054761. nVent HOFFMAN has the following manufacturing facility approved by SAUDI ARAMCO and included as part of RVL.

- SC Eldon SRL, Romania (Plant ID 30007326) approved for supply of 9COM Material Ref. 6000002697 against 34-SAMSS-820 (indoor enclosures).

The main features of each enclosure version in nVent HOFFMAN's mild steel floor standing range is listed in the table below.

	Combinable standard enclosures			
	MCS MCD			
				
FRONT	door	door	door	door
SIDES	removable	removable	removable	removable
REAR	removable	removable	door	door
ROOF	removable	removable	removable	removable
BOTTOM	3/4 pieces	3/4 pieces	3/4 pieces	3/4 pieces
MOUNTING PLATE	yes	no	yes	no

Floor Standing Enclosures
Steel Range | Mild Steel
Combinable, Single Door | MCS

IP 55 | TYPE 12, 13 | IK 10



Material:

Frame: 1.5 mm painted steel. Door: 2 mm painted steel.
 Rear, roof and side panels: 1.5 mm painted steel.
 Mounting plate: 3 mm galvanized steel. Bottom plates: 1 mm galvanized steel.

Frame:

Seam welded reversed open profiles with 25 mm hole pattern according to DIN 43660. Including integrated external hole pattern.

Door:

Mounted with four hinges allowing left or right hand opening. Including door frame with 25 mm hole pattern.

Rear panel:

Enclosure with Rear panel fitted by M6 torx screws.
 Enclosure with Rear door instead of rear panel.

Side panels:

Supplied as an accessory.

Roof panel:

Removable.

Lock:

Espagnolette 4-point locking system. Does not interfere with the enclosure inner space. Standard double-bit lock with 3 mm insert. Standard inserts, cylinders, lift handles and T-handles are available as accessories.

Bottom plates:

Consists of three or four pieces for enclosures with one mounting plate and four or six for enclosures with two mounting plates mounted back to back.

Mounting plate:

Double folded and slides into position. Adjustable in depth by steps of 25 mm with the MPD02 accessory. Supplied outside of the enclosure packaging.

Earthing:

All panels are earthed through their fittings and are equipped with a separate earthing stud.

Finish:

RAL 7035 structured powder coating.

Protection:

Complies with IP 55 | TYPE 12, 13 | IK 10.

Approvals:

CE, CSA, DNV-GL, EAC, GOST, Kema Keur, Lloyds shipping, RS, cULus_listed.

Mounting requirement:

Standard delivery ready for combined installation. For stand-alone installation add side panels.

Delivery:

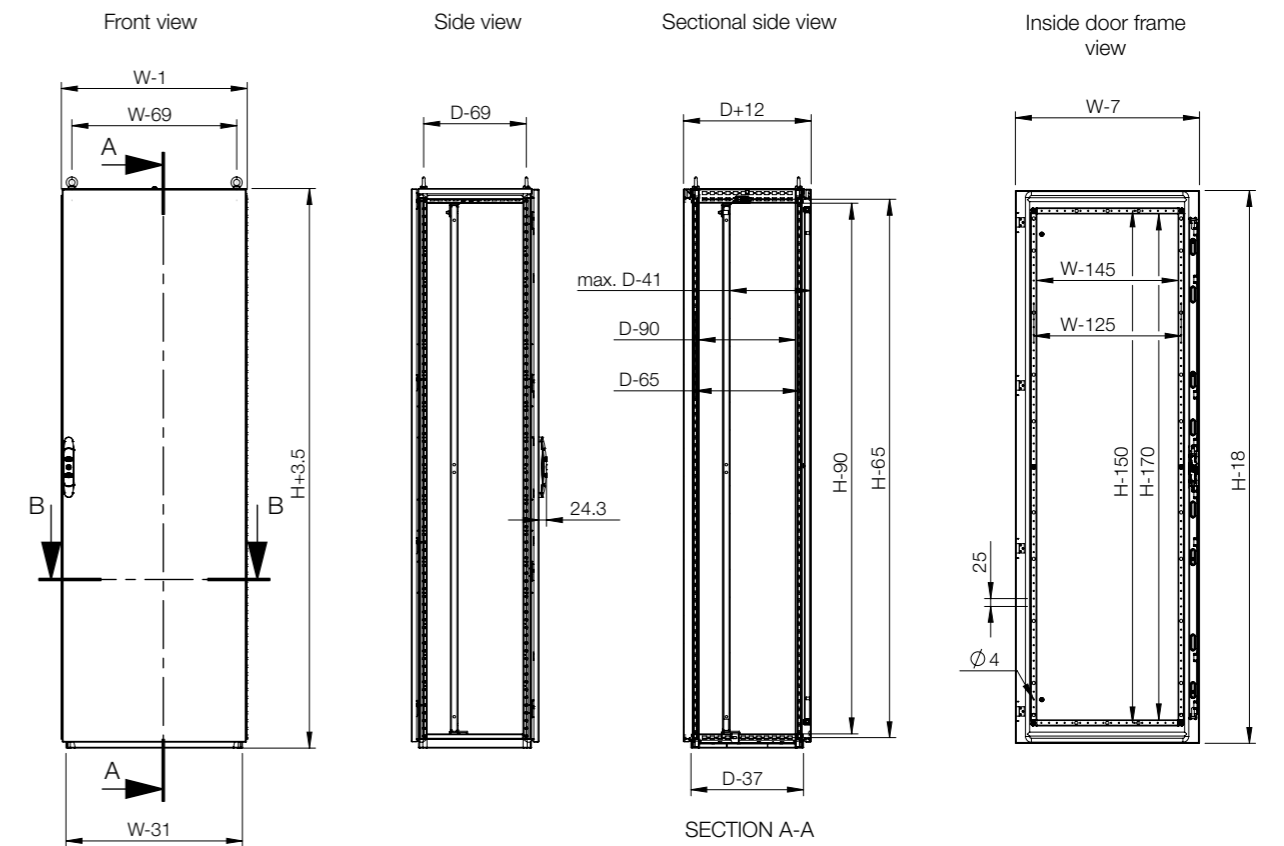
Frame with fitted door, rear panel or rear door, roof panel, bottom plates, mounting plate and door frame. Delivery also includes earthing bolts. Delivered on a pallet which is identical to the width of the enclosure to allow suiting without removal. All packing material is recyclable.



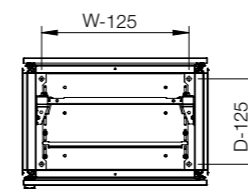
IP 55 | TYPE 12, 13 | IK 10

Combinable, single door, without rear door

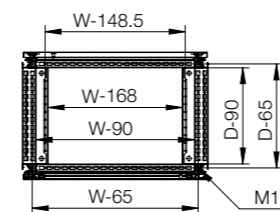
Enclosure dimensions			Enclosure with MP	Enclosure without MP
H	W	D	Item no.	Item no.
2000	600	800	MCS20068R5	MCS20068PER5
2000	800	400	MCS20084R5	MCS20084PER5
2000	800	600	MCS20086R5	MCS20086PER5
2000	800	800	MCS20088R5	MCS20088PER5



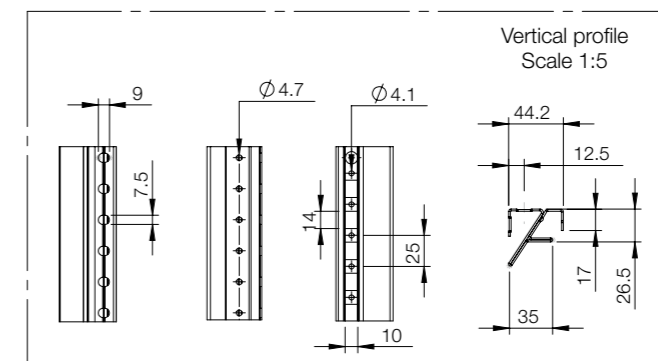
Sectional top view



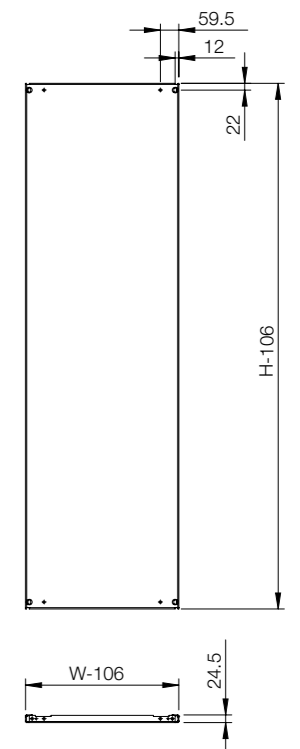
Sectional top view (without bottom plates)



SECTION B-B



Mounting plate view

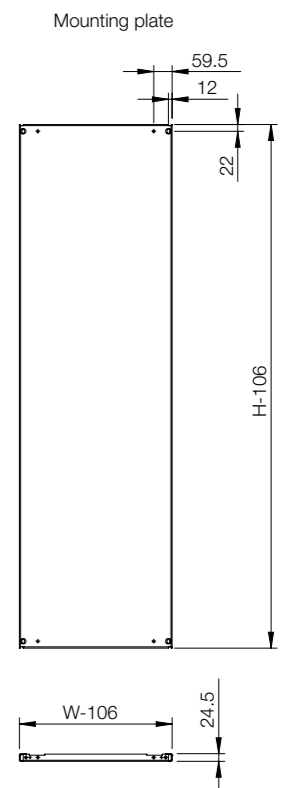
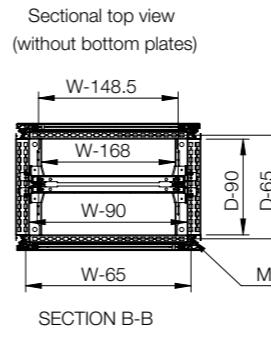
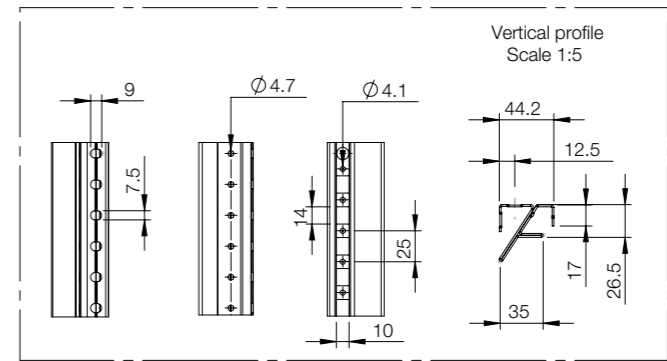
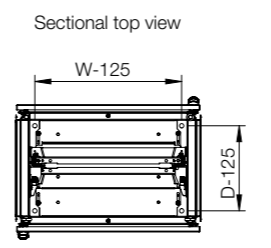
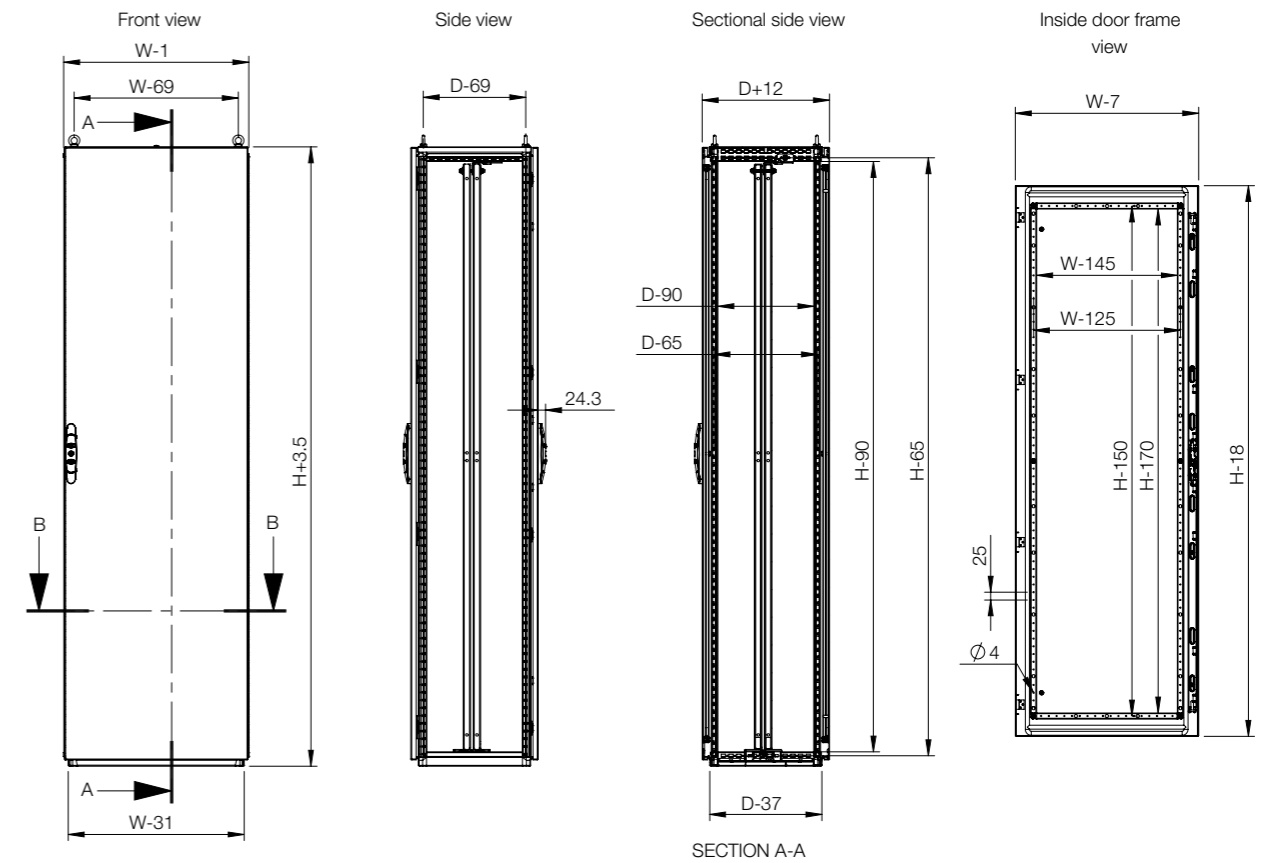


IP 55 | TYPE 12, 13 | IK 10

Combinable, single door, with rear door *

Enclosure dimensions			Enclosure with MP and Rear door	Enclosure without MP and with Rear door
H	W	D	Item no.	Item no.
2000	600	800	MCS20068RDR5	MCS20068PERDR5
2000	800	600	MCS20086RDR5	MCS20086PERDR5
2000	800	800	MCS20088RDR5	MCS20088PERDR5
2000	800	1000	MCS200810RDR5	MCS200810PERDR5
2000	1000	800	MCS20108RDR5	MCS20108PERDR5

* The enclosure with rear door, includes two mounting plates assembled back to back and four bottom plates.



Floor Standing Enclosures Steel Range | Mild Steel Combinable, double door | MCD

IP 55 | TYPE 12, 13 | IK 10



Material:

Frame: 1.5 mm painted steel. Doors: 2 mm painted steel.
Rear, roof and side panels: 1.5 mm painted steel.
Mounting plate: 3 mm galvanized steel. Bottom plates: 1 mm galvanized steel.

Frame:

Seam welded reversed open profiles with 25 mm hole pattern according to DIN 43660. Including integrated external hole pattern.

Doors:

Mounted with four hinges. Including door frame with 25 mm hole pattern.
Doors cannot be reversed. Separate doors to be ordered for left hand door locking.

Rear panel:

Fitted by M6 torx screws. Standard facilities for rear doors mounting.

Side panels:

Supplied as an accessory.

Roof panel:

Rear panel fitted by M6 torx screws. Rear doors instead of rear panel.

Lock:

Espagnolette 4-point locking system. Does not interfere with the enclosure inner space. Standard double-bit lock with 3 mm insert. Integrated left door locking system. Standard inserts, cylinders, lift handles and T-handles are available as accessories.

Bottom plates:

Consists of 3 or 6 pieces for enclosures with one mounting plate and 8 pieces for enclosures with two mounting plates mounted back to back.

Mounting plate:

Double folded and slides into position. Adjustable in depth by steps of 25 mm with the MPD02 accessory. Supplied outside of the enclosure packaging. For Enclosure with rear doors, two mounting plates mounted back to back with MPBB06.

Earthing:

All panels are earthed through their fittings and equipped with a separate earthing stud.

Finish:

RAL 7035 structured powder coating.

Protection:

Complies with IP 55 | TYPE 12, 13 | IK 10.

Approvals:

CE, CSA, DNV-GL, EAC, GOST, Kema Keur, Lloyds shipping, RS, cULus_listed.

Mounting requirement:

Standard delivery ready for combined installation.
For stand-alone installation add side panels.

Delivery:

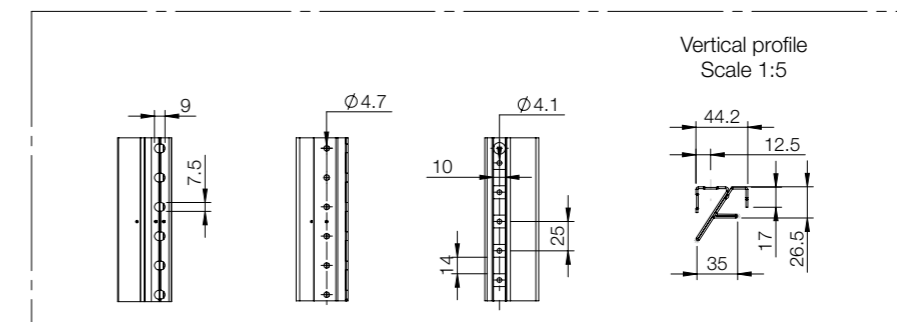
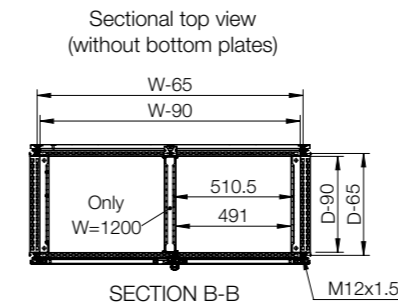
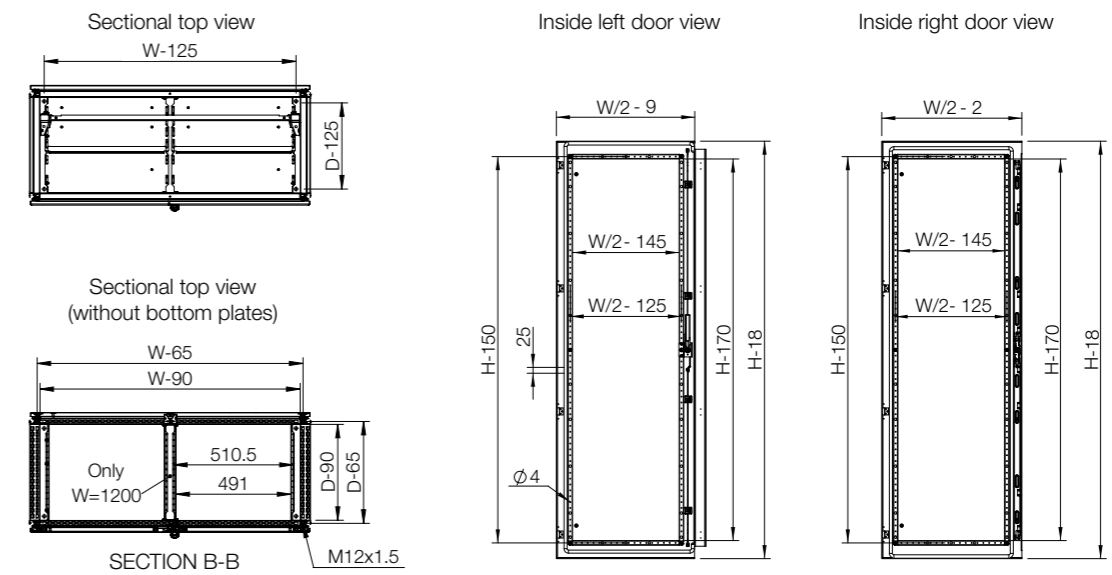
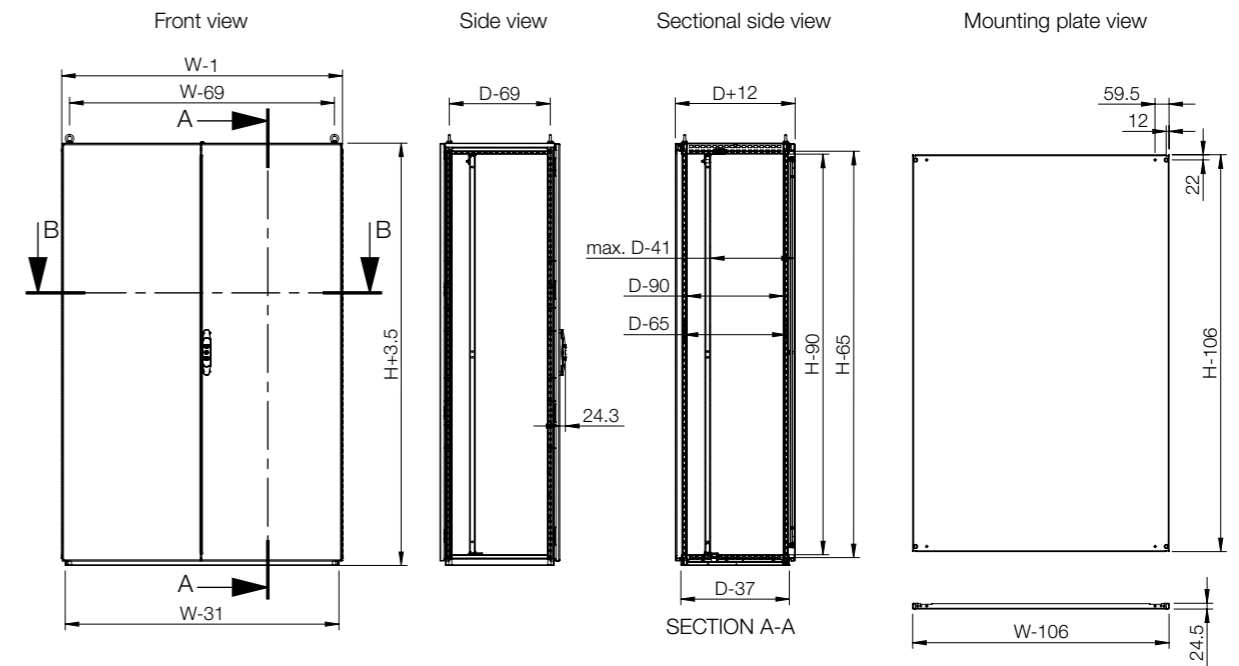
Frame with fitted doors, rear panel or rear doors, rear panel, roof panel, bottom plates, mounting plate and door frame. Delivery also includes earthing bolts. Delivered on a pallet which is identical to the width of the enclosure to allow suiting without removal. Packing material is recyclable.



IP 55 | TYPE 12, 13 | IK 10

Combinable, double door, without rear door

Enclosure dimensions			Enclosure with MP	Enclosure without MP
H	W	D	Item no.	Item no.
2000	800	600	MCD20086R5	MCD20086PER5
2000	1200	600	MCD20126R5	MCD20126PER5

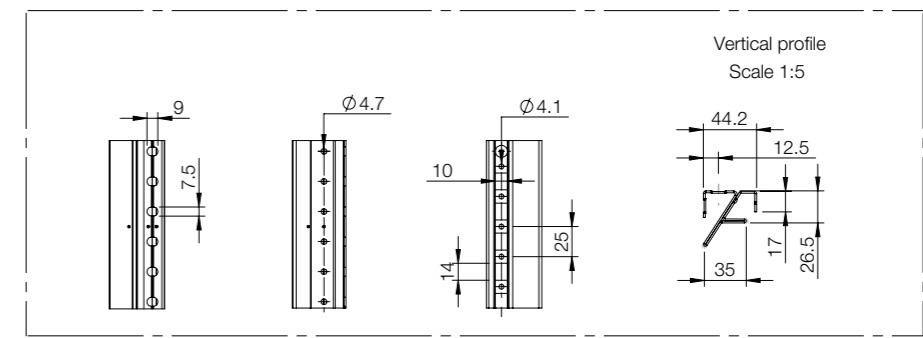
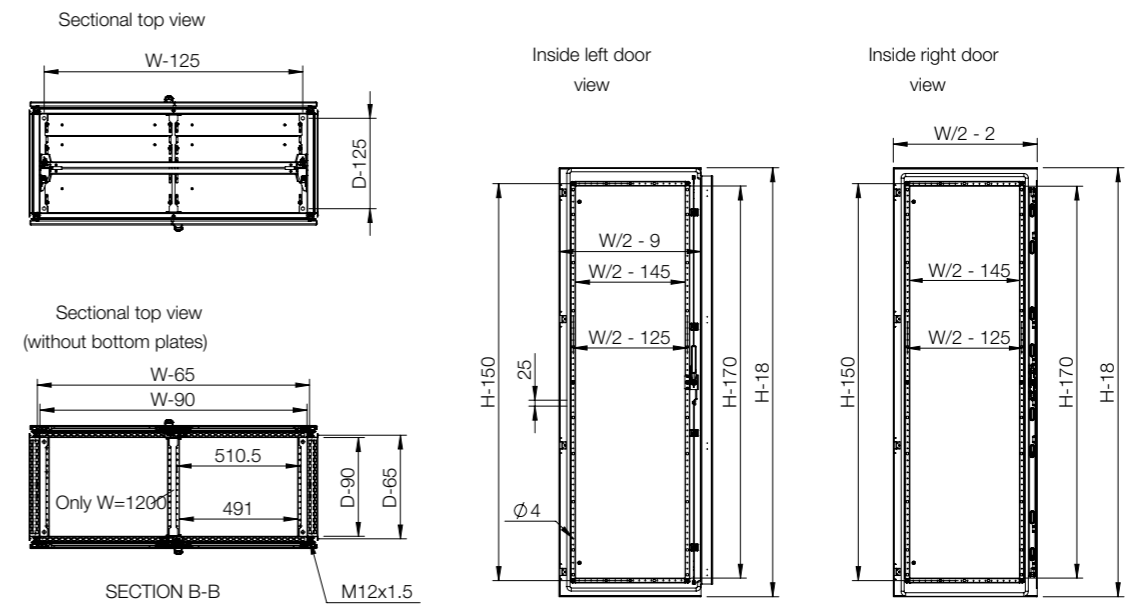
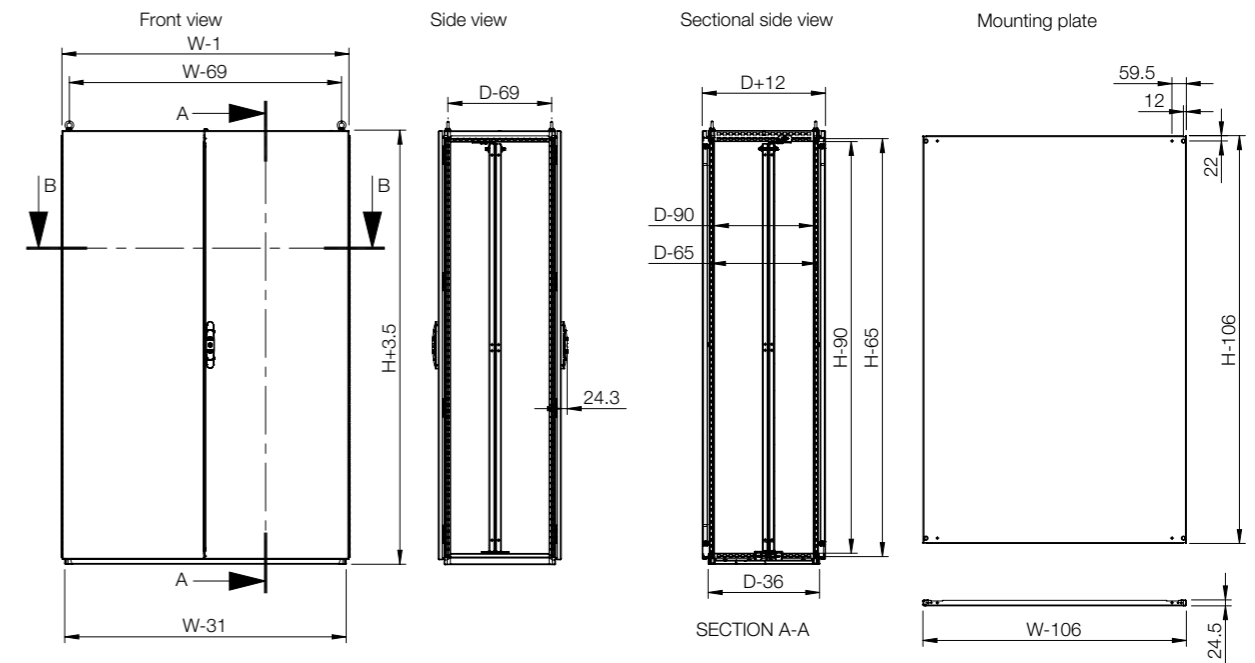


IP 55 | TYPE 12, 13 | IK 10

Combinable, double door, with rear door *

Enclosure dimensions			Enclosure with MP and Rear door	Enclosure without MP and with Rear door
H	W	D	Item no.	Item no.
2000	800	800	MCD20088RDR5	MCD20088PERDR5
2000	1000	800	MCD20108RDR5	MCD20108PERDR5
2000	1200	600	MCD20126RDR5	MCD20126PERDR5
2000	1200	800	MCD20128RDR5	MCD20128PERDR5

* The enclosure with rear doors, includes two mounting plates assembled back to back and eight bottom plates.



Enclosure	Mounting							
	H	W	D	Mounting plate	Mounting profile, in H	Mounting profile, in W	Mounting profile, in D	Click in profile, in W
With MP								
MCS20068R5	2000	600	800	MP2006	CLPF2000	CLPF600	CLPF600	CLPK600
MCS20084R5	2000	800	400	MP2008	CLPF2000	CLPF800	CLPF800	CLPK800
MCS20086R5	2000	800	600	MP2008	CLPF2000	CLPF800	CLPF800	CLPK800
MCS20088R5	2000	800	800	MP2008	CLPF2000	CLPF800	CLPF800	CLPK800
MCD20086R5	2000	800	600	MP2008	CLPF2000	CLPF800	CLPF600	CLPK800
MCD20088R5	2000	800	800	MP2008	CLPF2000	CLPF800	CLPF800	CLPK800
MCD20108R5	2000	1000	800	MP2010	CLPF2000	CLPF1000	CLPF800	CLPK1000
MCD20126R5	2000	1200	600	MP2012	CLPF2000	CLPF1200	CLPF600	CLPK1200
MCD20128R5	2000	1200	800	MP2012	CLPF2000	CLPF1200	CLPF800	CLPK1200
Without MP								
MCS20068PER5	2000	600	800	MP2006	CLPF2000	CLPF600	CLPF600	CLPK600
MCS20084PER5	2000	800	400	MP2008	CLPF2000	CLPF800	CLPF800	CLPK800
MCS20086PER5	2000	800	600	MP2008	CLPF2000	CLPF800	CLPF800	CLPK800
MCS20088PER5	2000	800	800	MP2008	CLPF2000	CLPF800	CLPF800	CLPK800
MCD20086PER5	2000	800	600	MP2008	CLPF2000	CLPF800	CLPF600	CLPK800
MCD20088PER5	2000	800	800	MP2008	CLPF2000	CLPF800	CLPF800	CLPK800
MCD20108PER5	2000	1000	800	MP2010	CLPF2000	CLPF1000	CLPF800	CLPK1000
MCD20126PER5	2000	1200	600	MP2012	CLPF2000	CLPF1200	CLPF600	CLPK1200
MCD20128PER5	2000	1200	800	MP2012	CLPF2000	CLPF1200	CLPF800	CLPK1200
With Rear door and 2 x MP mounted with MPBB06								
MCS20068RDR5	2000	600	800	MP2006	CLPF2000	CLPF600	CLPF600	CLPK600
MCS20086RDR5	2000	800	600	MP2008	CLPF2000	CLPF800	CLPF800	CLPK800
MCS20088RDR5	2000	800	800	MP2008	CLPF2000	CLPF800	CLPF800	CLPK800
MCS200810RDR5	2000	800	1000	MP2008	CLPF2000	CLPF800	CLPF1000	CLPK800
MCS20108RDR5	2000	1000	800	MP2010	CLPF2000	CLPF1000	CLPF800	CLPK1000
MCD20088RDR5	2000	800	800	MP2008	CLPF2000	CLPF800	CLPF800	CLPK800
MCD20108RDR5	2000	1000	800	MP2010	CLPF2000	CLPF1000	CLPF800	CLPK1000
MCD20126RDR5	2000	1200	600	MP2012	CLPF2000	CLPF1200	CLPF600	CLPK1200
MCD20128RDR5	2000	1200	800	MP2012	CLPF2000	CLPF1200	CLPF800	CLPK1200
With Rear door and without MP								
MCS20068PERDR5	2000	600	800	MP2006	CLPF2000	CLPF600	CLPF600	CLPK600
MCS20086PERDR5	2000	800	600	MP2008	CLPF2000	CLPF800	CLPF800	CLPK800
MCS20088PERDR5	2000	800	800	MP2008	CLPF2000	CLPF800	CLPF800	CLPK800
MCS200810PERDR5	2000	800	1000	MP2008	CLPF2000	CLPF800	CLPF1000	CLPK800
MCS20108PERDR5	2000	1000	800	MP2010	CLPF2000	CLPF1000	CLPF800	CLPK1000
MCD20088PERDR5	2000	800	800	MP2008	CLPF2000	CLPF800	CLPF800	CLPK800
MCD20108PERDR5	2000	1000	800	MP2010	CLPF2000	CLPF1000	CLPF800	CLPK1000
MCD20126PERDR5	2000	1200	600	MP2012	CLPF2000	CLPF1200	CLPF600	CLPK1200
MCD20128PERDR5	2000	1200	800	MP2012	CLPF2000	CLPF1200	CLPF800	CLPK1200

Enclosure	Mounting							
	H	W	D	Click in profile, in D	Side mounting bar	Extra width side mounting bars	Front/rear plinths (100 mm height)	Plinth side panels (100 mm height)
With MP								
MCS20068R5	2000	600	800	CLPK600	CMB802	CMB806OG	PF1060	PS1080
MCS20084R5	2000	800	400	CLPK800	CMB402	CMB406OG	PF1080	PS1040
MCS20086R5	2000	800	600	CLPK800	CMB602	CMB606OG	PF1080	PS1060
MCS20088R5	2000	800	800	CLPK800	CMB802	CMB806OG	PF1080	PS1080
MCD20086R5	2000	800	600	CLPK600	CMB602	CMB606OG	PF1080	PS1060
MCD20088R5	2000	800	800	CLPK800	CMB802	CMB806OG	PF1080	PS1080
MCD20108R5	2000	1000	800	CLPK800	CMB802	CMB806OG	PF1100	PS1080
MCD20126R5	2000	1200	600	CLPK600	CMB602	CMB606OG	PF1120	PS1060
MCD20128R5	2000	1200	800	CLPK800	CMB802	CMB806OG	PF1120	PS1080
Without MP								
MCS20068PER5	2000	600	800	CLPK600	CMB802	CMB806OG	PF1060	PS1080
MCS20084PER5	2000	800	400	CLPK800	CMB402	CMB406OG	PF1080	PS1040
MCS20086PER5	2000	800	600	CLPK800	CMB602	CMB606OG	PF1080	PS1060
MCS20088PER5	2000	800	800	CLPK800	CMB802	CMB806OG	PF1080	PS1080
MCD20086PER5	2000	800	600	CLPK600	CMB602	CMB606OG	PF1080	PS1060
MCD20088PER5	2000	800	800	CLPK800	CMB802	CMB806OG	PF1080	PS1080
MCD20108PER5	2000	1000	800	CLPK800	CMB802	CMB806OG	PF1100	PS1080
MCD20126PER5	2000	1200	600	CLPK600	CMB602	CMB606OG	PF1120	PS1060
MCD20128PER5	2000	1200	800	CLPK800	CMB802	CMB806OG	PF1120	PS1080
With Rear door and 2 x MP mounted with MPBB06								
MCS20068RDR5	2000	600	800	CLPK600	CMB802	CMB806OG	PF1060	PS1080
MCS20086RDR5	2000	800	600	CLPK800	CMB602	CMB606OG	PF1080	PS1060
MCS20088RDR5	2000	800	800	CLPK800	CMB802	CMB806OG	PF1080	PS1080
MCS200810RDR5	2000	800	1000	CLPK1000	-	CMB1006OG	PF1080	PS1100
MCS20108RDR5	2000	1000	800	CLPK800	CMB802	CMB806OG	PF1100	PS1080
MCD20088RDR5	2000	800	800	CLPK800	CMB802	CMB806OG	PF1080	PS1080
MCD20108RDR5	2000	1000	800	CLPK800	CMB802	CMB806OG	PF1100	PS1080
MCD20126RDR5	2000	1200	600	CLPK600	CMB602	CMB606OG	PF1120	PS1060
MCD20128RDR5	2000	1200	800	CLPK800	CMB802	CMB806OG	PF1120	PS1080
With Rear door and without MP								
MCS20068PERDR5	2000	600	800	CLPK600	CMB802	CMB806OG	PF1060	PS1080
MCS20086PERDR5	2000	800	600	CLPK800	CMB602	CMB606OG	PF1080	PS1060
MCS20088PERDR5	2000	800	800	CLPK800	CMB802	CMB806OG	PF1080	PS1080
MCS200810PERDR5	2000	800	1000	CLPK1000	-	CMB1006OG	PF1080	PS1100
MCS20108PERDR5	2000	1000	800	CLPK800	CMB802	CMB806OG	PF1100	PS1080
MCD20088PERDR5	2000	800	800	CLPK800	CMB802	CMB806OG	PF1080	PS1080
MCD20108PERDR5	2000	1000	800	CLPK800	CMB802	CMB806OG	PF1100	PS1080
MCD20126PERDR5	2000	1200	600	CLPK600	CMB602	CMB606OG	PF1120	PS1060
MCD20128PERDR5	2000	1200	800	CLPK800	CMB802	CMB806OG	PF1120	PS1080

Enclosure	Mounting							
	H	W	D	Front/rear plinths (200 mm height)	Plinth side panels (200 mm height)	Plinth combining profile	Cable fixing bar (mounted below bottom plates)	Cable fixing bar (mounted above bottom plates)
With MP								
MCS20068R5	2000	600	800	PF2060	PS2080	PCP08	CABP600	CAB600
MCS20084R5	2000	800	400	PF2080	PS2040	PCP04	CABP800	CAB800
MCS20086R5	2000	800	600	PF2080	PS2060	PCP04	CABP800	CAB800
MCS20088R5	2000	800	800	PF2080	PS2080	PCP08	CABP800	CAB800
MCD20086R5	2000	800	600	PF2080	PS2060	PCP06	CABP800	CAB800
MCD20088R5	2000	800	800	PF2080	PS2080	PCP08	CABP800	CAB800
MCD20108R5	2000	1000	800	PF2100	PS2080	PCP08	CABP1000	CAB1000
MCD20126R5	2000	1200	600	PF2120	PS2060	PCP06	CABP1200	CAB1200
MCD20128R5	2000	1200	800	PF2120	PS2080	PCP08	CABP1200	CAB1200
Without MP								
MCS20068PER5	2000	600	800	PF2060	PS2080	PCP08	CABP600	CAB600
MCS20084PER5	2000	800	400	PF2080	PS2040	PCP04	CABP800	CAB800
MCS20086PER5	2000	800	600	PF2080	PS2060	PCP04	CABP800	CAB800
MCS20088PER5	2000	800	800	PF2080	PS2080	PCP08	CABP800	CAB800
MCD20086PER5	2000	800	600	PF2080	PS2060	PCP06	CABP800	CAB800
MCD20088PER5	2000	800	800	PF2080	PS2080	PCP08	CABP800	CAB800
MCD20108PER5	2000	1000	800	PF2100	PS2080	PCP08	CABP1000	CAB1000
MCD20126PER5	2000	1200	600	PF2120	PS2060	PCP06	CABP1200	CAB1200
MCD20128PER5	2000	1200	800	PF2120	PS2080	PCP08	CABP1200	CAB1200
With Rear door and 2 x MP mounted with MPBB06								
MCS20068RDR5	2000	600	800	PF2060	PS2080	PCP08	CABP600	CAB600
MCS20086RDR5	2000	800	600	PF2080	PS2060	PCP04	CABP800	CAB800
MCS20088RDR5	2000	800	800	PF2080	PS2080	PCP08	CABP800	CAB800
MCS200810RDR5	2000	800	1000	PF2080	PS2100	PCP10	CABP800	CAB800
MCS20108RDR5	2000	1000	800	PF2100	PS2080	PCP08	CABP1000	CAB1000
MCD20088RDR5	2000	800	800	PF2080	PS2080	PCP08	CABP800	CAB800
MCD20108RDR5	2000	1000	800	PF2100	PS2080	PCP08	CABP1000	CAB1000
MCD20126RDR5	2000	1200	600	PF2120	PS2060	PCP06	CABP1200	CAB1200
MCD20128RDR5	2000	1200	800	PF2120	PS2080	PCP08	CABP1200	CAB1200
With Rear door and without MP								
MCS20068PERDR5	2000	600	800	PF2060	PS2080	PCP08	CABP600	CAB600
MCS20086PERDR5	2000	800	600	PF2080	PS2060	PCP04	CABP800	CAB800
MCS20088PERDR5	2000	800	800	PF2080	PS2080	PCP08	CABP800	CAB800
MCS200810PERDR5	2000	800	1000	PF2080	PS2100	PCP10	CABP800	CAB800
MCS20108PERDR5	2000	1000	800	PF2100	PS2080	PCP08	CABP1000	CAB1000
MCD20088PERDR5	2000	800	800	PF2080	PS2080	PCP08	CABP800	CAB800
MCD20108PERDR5	2000	1000	800	PF2100	PS2080	PCP08	CABP1000	CAB1000
MCD20126PERDR5	2000	1200	600	PF2120	PS2060	PCP06	CABP1200	CAB1200
MCD20128PERDR5	2000	1200	800	PF2120	PS2080	PCP08	CABP1200	CAB1200

Enclosure	Mounting							
	H	W	D	Plain door	Plain door left	Plain door right	Glazed door	Glazed door left
With MP								
MCS20068R5	2000	600	800	DN2006R5	-	-	DNG2006R5	-
MCS20084R5	2000	800	400	DN2008R5	-	-	DNG2008R5	-
MCS20086R5	2000	800	600	DN2008R5	-	-	DNG2008R5	-
MCS20088R5	2000	800	800	DN2008R5	-	-	DNG2008R5	-
MCD20086R5	2000	800	600	-	DN2004LR5	DN2004RR5	-	DNG2004LR5
MCD20088R5	2000	800	800	-	DN2004LR5	DN2004RR5	-	DNG2004LR5
MCD20108R5	2000	1000	800	-	DN2005LR5	DN2005RR5	-	DNG2005LR5
MCD20126R5	2000	1200	600	-	DN2006LR5	DN2006RR5	-	DNG2006LR5
MCD20128R5	2000	1200	800	-	DN2006LR5	DN2006RR5	-	DNG2006LR5
Without MP								
MCS20068PER5	2000	600	800	DN2006R5	-	-	DNG2006R5	-
MCS20084PER5	2000	800	400	DN2008R5	-	-	DNG2008R5	-
MCS20086PER5	2000	800	600	DN2008R5	-	-	DNG2008R5	-
MCS20088PER5	2000	800	800	DN2008R5	-	-	DNG2008R5	-
MCD20086PER5	2000	800	600	-	DN2004LR5	DN2004RR5	-	DNG2004LR5
MCD20088PER5	2000	800	800	-	DN2004LR5	DN2004RR5	-	DNG2004LR5
MCD20108PER5	2000	1000	800	-	DN2005LR5	DN2005RR5	-	DNG2005LR5
MCD20126PER5	2000	1200	600	-	DN2006LR5	DN2006RR5	-	DNG2006LR5
MCD20128PER5	2000	1200	800	-	DN2006LR5	DN2006RR5	-	DNG2006LR5
With Rear door and 2 x MP mounted with MPBB06								
MCS20068RDR5	2000	600	800	DN2006R5	-	-	DNG2006R5	-
MCS20086RDR5	2000	800	600	DN2008R5	-	-	DNG2008R5	-
MCS20088RDR5	2000	800	800	DN2008R5	-	-	DNG2008R5	-
MCS200810RDR5	2000	800	1000	DN2008R5	-	-	DNG2008R5	-
MCS20108RDR5	2000	1000	800	DN2010R5	-	-	DNG2010R5	-
MCD20088RDR5	2000	800	800	-	DN2004LR5	DN2004RR5	-	DNG2004LR5
MCD20108RDR5	2000	1000	800	-	DN2005LR5	DN2005RR5	-	DNG2005LR5
MCD20126RDR5	2000	1200	600	-	DN2006LR5	DN2006RR5	-	DNG2006LR5
MCD20128RDR5	2000	1200	800	-	DN2006LR5	DN2006RR5	-	DNG2006LR5
With Rear door and without MP								
MCS20068PERDR5	2000	600	800	DN2006R5	-	-	DNG2006R5	-
MCS20086PERDR5	2000	800	600	DN2008R5	-	-	DNG2008R5	-
MCS20088PERDR5	2000	800	800	DN2008R5	-	-	DNG2008R5	-
MCS200810PERDR5	2000	800	1000	DN2008R5	-	-	DNG2008R5	-
MCS20108PERDR5	2000	1000	800	DN2010R5	-	-	DNG2010R5	-
MCD20088PERDR5	2000	800	800	-	DN2004LR5	DN2004RR5	-	DNG2004LR5
MCD20108PERDR5	2000	1000	800	-	DN2005LR5	DN2005RR5	-	DNG2005LR5
MCD20126PERDR5	2000	1200	600	-	DN2006LR5	DN2006RR5	-	DNG2006LR5
MCD20128PERDR5	2000	1200	800	-	DN2006LR5	DN2006RR5	-	DNG2006LR5

Enclosure	Mounting						
	H	W	D	Glazed door right	Side panels	Document pocket	Section profile for cable entry
With MP							
MCS20068R5	2000	600	800	-	SPM2008R5	DRB600R5	SCE600
MCS20084R5	2000	800	400	-	SPM2004R5	DRB800R5	SCE800
MCS20086R5	2000	800	600	-	SPM2006R5	DRB800R5	SCE800
MCS20088R5	2000	800	800	-	SPM2008R5	DRB800R5	SCE800
MCD20086R5	2000	800	600	DNG2004RR5	SPM2006R5	DRB300R5	SCE800
MCD20088R5	2000	800	800	DNG2004RR5	SPM2008R5	DRB300R5	SCE800
MCD20108R5	2000	1000	800	DNG2005RR5	SPM2008R5	DRB500R5	SCE1000
MCD20126R5	2000	1200	600	DNG2006RR5	SPM2006R5	DRB600R5	SCE1200
MCD20128R5	2000	1200	800	DNG2006RR5	SPM2008R5	DRB600R5	SCE1200
Without MP							
MCS20068PER5	2000	600	800	-	SPM2008R5	DRB600R5	SCE600
MCS20084PER5	2000	800	400	-	SPM2004R5	DRB800R5	SCE800
MCS20086PER5	2000	800	600	-	SPM2006R5	DRB800R5	SCE800
MCS20088PER5	2000	800	800	-	SPM2008R5	DRB800R5	SCE800
MCD20086PER5	2000	800	600	DNG2004RR5	SPM2006R5	DRB300R5	SCE800
MCD20088PER5	2000	800	800	DNG2004RR5	SPM2008R5	DRB300R5	SCE800
MCD20108PER5	2000	1000	800	DNG2005RR5	SPM2008R5	DRB500R5	SCE1000
MCD20126PER5	2000	1200	600	DNG2006RR5	SPM2006R5	DRB600R5	SCE1200
MCD20128PER5	2000	1200	800	DNG2006RR5	SPM2008R5	DRB600R5	SCE1200
With Rear door and 2 x MP mounted with MPBB06							
MCS20068RDR5	2000	600	800	-	SPM2008R5	DRB600R5	SCE600
MCS20086RDR5	2000	800	600	-	SPM2006R5	DRB800R5	SCE800
MCS20088RDR5	2000	800	800	-	SPM2008R5	DRB800R5	SCE800
MCS200810RDR5	2000	800	1000	-	SPM2010R5	DRB800R5	SCE800
MCS20108RDR5	2000	1000	800	-	SPM2008R5	DRB800R5	SCE1000
MCD20088RDR5	2000	800	800	DNG2004RR5	SPM2008R5	DRB300R5	SCE800
MCD20108RDR5	2000	1000	800	DNG2005RR5	SPM2008R5	DRB500R5	SCE1000
MCD20126RDR5	2000	1200	600	DNG2006RR5	SPM2006R5	DRB600R5	SCE1200
MCD20128RDR5	2000	1200	800	DNG2006RR5	SPM2008R5	DRB600R5	SCE1200
With Rear door and without MP							
MCS20068PERDR5	2000	600	800	-	SPM2008R5	DRB600R5	SCE600
MCS20086PERDR5	2000	800	600	-	SPM2006R5	DRB800R5	SCE800
MCS20088PERDR5	2000	800	800	-	SPM2008R5	DRB800R5	SCE800
MCS200810PERDR5	2000	800	1000	-	SPM2010R5	DRB800R5	SCE800
MCS20108PERDR5	2000	1000	800	-	SPM2008R5	DRB800R5	SCE1000
MCD20088PERDR5	2000	800	800	DNG2004RR5	SPM2008R5	DRB300R5	SCE800
MCD20108PERDR5	2000	1000	800	DNG2005RR5	SPM2008R5	DRB500R5	SCE1000
MCD20126PERDR5	2000	1200	600	DNG2006RR5	SPM2006R5	DRB600R5	SCE1200
MCD20128PERDR5	2000	1200	800	DNG2006RR5	SPM2008R5	DRB600R5	SCE1200



Floor Standing Steel Range

Accessories | Mounting plate

Steel mounting plate, MP		Mild steel, combinable enclosures, MCS/MCD
		Required accessories
FIXATION	Flush with frame, MP included in the enclosure	Included
	Flush with frame, MP not included in the enclosure	Mounting plate brackets, MPA04
	Adjustable in depth, MP included in the enclosure	Adjustment bracket, MPD02
	Adjustable in depth, MP not included in the enclosure	Mounting plate brackets, MPA06
	Side mounting plate	Side mounting plate brackets, MPS04
	Additional mounting plate	Mounting plate brackets, MPA06
	Back to back mounting plate	Back to back MP brackets, MPBB06
HINGED	Complete height mounting plate	Mounting plate hinge kit, MPH01 Carrier bars, CB
	Partial height mounting plate	Mounting plate hinge kit, MPH01 Carrier bars, CB Mounting profiles in depth, CLPK/CLPF. 4 pcs
REINFORCEMENT	Fixation reinforcement, flush mounting	Flush MP reinforcement brackets, MPEF
	Fixation reinforcement, not flush mounting	MP reinforcement brackets, MPE Side mounting bars in depth, CMB. 2 pcs
	Mounting plate reinforcement	MP reinforcement profiles, MPR
BAYED ENCLOSURES	Continue mounting plate, flush with the frame	Filler plate, MPF. One per enclosure joining
	Continue mounting plate, no flush with the frame	Not available

Extra width side mounting bars, CMBXXXOG

Description: Profile to be mounted in the side of an combinable enclosure that allows for fixing customer specific products for additional mounting surface.

Material: 2 mm galvanized steel.

Pack quantity: 6 profiles with mounting accessories.



For enclosure	
W	Item no.
400	CMB406OG
600	CMB606OG
800	CMB806OG



Floor Standing Steel Range

Accessories | Full height doors and locking systems

Full height doors		Mild steel, combinable enclosures, MCS/MCD
		Required accessories
PLAIN DOOR	Replacement of standard door, 130° opening	Plain door, DN
	Additional door in the rear, 130° opening	Plain door, DN Door mounting kit, DNMK
TRANSPARENT DOOR	Replacement of standard door, 130° opening	Plain door, DNG
	Additional door in the rear, 130° opening	Plain door, DNG Door mounting kit, DNMK
SIDE DOOR	Side door	Side door, DNS
RAISED SIDE DOOR	Raised side door for cabling	Raised side door, DNSR
	Raised side door for cabling with marshalling plate	Raised side door, DNSR Marshalling plate, MM Cover plates, MMG. When required
INNER DOOR	Inner door adjustable in depth	Inner door, DI

Locking systems for complete doors		Mild steel, combinable enclosures, MCS/MCD
		Required accessories
LIFT HANDLE FOR ROUND CYLINDERS, WITHOUT PADLOCKING	Square, triangle or double-bit insert	Lifting handle lock cover, LLH501 Locking system insert for lift handle, LHC523/LHC524/LHC526/LHC527/LHC528/LHC529
	Ronis key C21323	Lifting handle lock cover, LLH501 Locking system insert for lift handle, LHC522
	Daimler Benz	Lifting handle lock cover, LLH501 Locking system insert for lift handle, LHC530
	Push button	Lifting handle lock cover, LLH501 Locking system insert for lift handle, LHC536
	Other key numbers available on request	Lifting handle lock cover, LLH501 Locking system insert for lift handle, LHCXXX
LIFT HANDLE FOR HALF CYLINDERS, WITHOUT PADLOCKING	Ronis key 2132E	Lifting handle lock cover, LLH502 Locking system insert for lift handle, LHC5212132E
	Ronis key 3121E	Lifting handle lock cover, LLH502 Locking system insert for lift handle, LHC5213121E
	Adapter for Abloy ASSA and Trioving cylinders	Lifting handle lock cover, LLH502 Locking system insert for lift handle, LHC535
	Adapter for Ronis half cylinders	Lifting handle lock cover, LLH502 Locking system insert for lift handle, LHC534
	Other key numbers available on request	Lifting handle lock cover, LLH502 Locking system insert for lift handle, LHCXXX



Floor Standing Steel Range

Accessories

Document pocket, DRA

Description: Self adhesive, for DIN A4.
Finish: RAL 7035.
Material: Thermoplastic.
Pack quantity: 1 document pocket with double sided tape.
Usable depth: 30 mm.



Item no.
DRA04

Door stop, DSTP

Description: To lock an open door in position. Mounted directly to the door frame and on the enclosure profile. Allows the enclosure door to be opened up to 110 degrees.
Material: Zinc plated steel.
Pack quantity: 1 piece with mounting accessories.



Item no.
DSTP02

Door stop with opening adjustment

Door wheel, DW

Description: For easier closing and positioning of a heavily equipped door (cooling units, etc). Mounted directly to the door frame on the bottom of the door. Highly recommended when fitting loads from 30 kg on the enclosure door.
Material: Zinc plated steel.
Pack quantity: 2 pieces with mounting accessories.



Item no.
DW01

Door Plastic Support, DPSL

Description: Helps to centre the door in case of an uneven floor, as well as allowing easier closing and positioning when a heavy load is mounted (cooling units, etc). Mounted directly to the door frame on the bottom and top of the door. Highly recommended when fitting loads from 30 kg on door.
Pack quantity: 2 plastic supports with mounting accessories.



Item no.
DPSL01

Door switch, DSW

Description: Door switch to activate any electrical device (lighting, signalling, alarms, etc.). Can be mounted after installing the enclosure thereby keeping the door opening free. Fixed on the inside hole pattern of the enclosure's frame in floor standing enclosures. Cable entry M20.
Switch capacity: 3A / 240V.
Approvals: CE, EAC, UL
Pack quantity: 1 piece with mounting accessories.



Item no.
DSW01

Cable clamps, CAC

Description: To secure incoming cables onto the fixing bars CAB and CABP. Holds the cable in position and supports the weight.
Material: Zinc plated steel.
Mounting requirement: Add CAB/CABP to mount the cable clamps CAC.
Pack quantity: 25 clamps.



Size	Item no.
06-12 mm	CAC0612
10-14 mm	CAC1014
12-16 mm	CAC1216
14-18 mm	CAC1418
18-22 mm	CAC1822
22-26 mm	CAC2226
26-30 mm	CAC2630
30-34 mm	CAC3034
34-38 mm	CAC3438
38-42 mm	CAC3842
42-46 mm	CAC4246
56-64 mm	CAC5664

Floor Standing Steel Range

Lifting and baying

Individual enclosures

Description: Individual floor standing enclosures can be transported by crane safely using the lifting eye bolts, LE9304. The load that is installed inside the enclosure is systematically distributed allowing for a smooth transit. Permissible loads are dependent upon the lifting angle.

- Permissible load:**
- Cable angle 45° F= 4800 N
 - Cable angle 60° F= 6400 N
 - Cable angle 90° F= 13600 N



Two bayed enclosures

Description: Two floor standing enclosures bayed side by side can be transported by crane safely using the lifting devices, LC02. The load that is installed inside the enclosure is systematically distributed allowing for a smooth transit. Baying brackets 1 x CCI04 and 1 x CCM04 is a must.

- Permissible load:** Specified for a cable angle of 60°.
- F1= 7000N
 - F2= 7000N



Three bayed enclosures

Description: Three floor standing enclosures bayed side by side can be transported by crane safely using the lifting devices, 2 x LC02. The load that is installed inside the enclosure is systematically distributed allowing for a smooth transit. The lifting accessories required will depend upon the enclosure as well as its configuration, but using the baying brackets 2 x CCI06 and 2 x CCM04 is a must.

- Permissible load:** Specified for a cable angle of 60°.
- F1= 7000N
 - F2= 14000N
 - F3= 7000N



Floor Standing Steel Range

Accessories | Lifting and baying

Internal baying brackets, CCI

Description: Quick fixation baying brackets provide a rigid reinforcement of the enclosure assembly. The correct spacing between the enclosures is assured. Tools are not required for installation.

Material: 3 mm zinc plated steel.

Pack quantity: 6 brackets with mounting accessories.



Item no.
CCI06

Internal baying brackets assembly

Lifting eye bolts, LE

Description: Mounts directly to the frame corner pieces of the enclosure for when lifting operations are required. Complies with DIN 580 lifting requirements. M12 thread.

Maximum load: 3400N per lifting eye with max angle of 45°. Please follow nVent HOFFMAN lifting instructions.

Pack quantity: 4 pieces.



Description	Item no.
Lifting eyes	LE9304

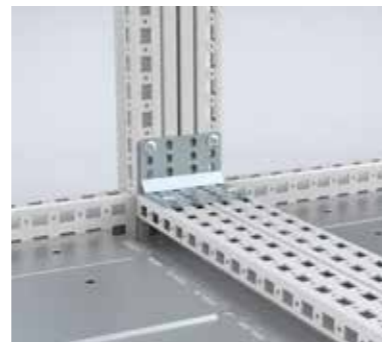
Lifting possibilities and assembly with loading capacity for the different solutions

Internal corner baying kit, CCM

Description: For extra support when bayed enclosures are fully equipped and require lifting. Can be used together with SPD separation plates.

Material: 3 mm zinc plated steel.

Pack quantity: 4 brackets with mounting accessories.



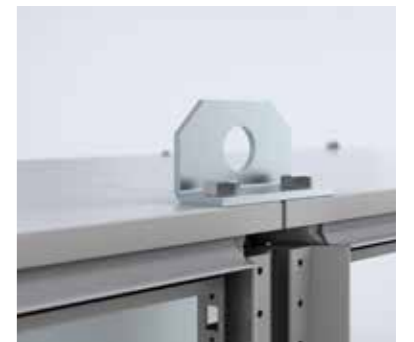
Item no.
CCM04

Lifting device, LC

Description: For optimal weight distribution when lifting bayed enclosures. To be used in combination with baying bracket.

Material: 5 mm zinc plated steel.

Pack quantity: 2 pieces with mounting accessories.



Pack quantity	Item no.
2	LC02

Lifting possibilities and assembly with loading capacity for the different solutions



Floor Standing | Stainless Steel Range

The enclosures in the single door floor standing stainless steel range are available in stainless steel type 316L and have a 240s pre-grained finish (average 0.5 microns). The range has different properties to comply with various conditions in many environments and is ideal for both indoor and outdoor installations.

Type 316L stainless steel enclosures are ideal for installations in coastal areas, marine applications subject to saltwater spray, industrial equipment exposed to corrosive process chemicals, and in any area with high exposure to chloride.

The welded frame in each enclosure makes it strong and rigid and well suited for heavy duty applications. A wide range of accessories are available to allow for many different configurations. The same accessories may be used on all enclosure versions, since all enclosures are designed around the same platform. This makes engineering easier and allows for stock reduction with panel builders and distributors. The assembly of the enclosures and accessories is easy, which contributes to reduced assembly time and increased competitiveness.

This enclosure range has been designed to comply with the relevant standard for empty enclosures, IEC 62208.

nVent HOFFMAN's customers can create their own configuration by using combinable standard modules.

Maximum protection for the user and the equipment is achieved thanks to the high protection degrees, IP 66 according to IEC 60529, and IK 10 according to IEC 62262.

nVent HOFFMAN Holding AB is an approved supplier of indoor and outdoor enclosures to SAUDI ARAMCO, holding Vendor ID No. 10054761. nVent HOFFMAN has the following manufacturing facility approved by SAUDI ARAMCO and included as part of RVL.

- SC nVent HOFFMAN SRL, Romania (Plant ID 30007326) approved for supply of 9COM Material Ref. 6000002697 against 34-SAMSS-821 (outdoor enclosures).

The main features of each enclosure version in nVent HOFFMAN's stainless steel floor standing range is listed in the table below.

	Combinable standard enclosures			
	MCSS			
FRONT	door	door	door	door
SIDES	removable	removable	removable	removable
REAR	removable	removable	door	door
ROOF	removable	removable	removable	removable
BOTTOM	1 piece	1 piece	1 piece	1 piece
MOUNTING PLATE	yes	no	yes	no

Floor Standing Enclosures

Steel Range | Stainless Steel

Combinable, single door | MCSS

IP 66 | TYPE 4X, 12, 13 | IK 10



Material:

AISI 316L pre-grained stainless steel. Frame: 1.5 mm. Door: 2 or 2.5 mm. Rear, roof and bottom plate: 2 or 2.5 mm. Mounting plate: 3 mm galvanized steel.

Frame:

Seam welded reversed open profiles with 25 mm hole pattern according to DIN 43660.

Door:

Mounted with four hinges allowing left or right hand opening. Including door frame with 25 mm hole pattern.

Rear:

Rear panel fitted by M6 tork screw. Rear door instead of rear panel.

Side panels:

Supplied as an accessory.

Roof panel:

Removable.

Lock:

Espagnolette locking system with lock catcher made in AISI 316L and additional locks in top and bottom for enclosures with W=1000 mm. Swing handle SS 316L with half cylinder keyed EK 333.

Bottom plates:

One piece bottom plate with injected polyurethane gasket to ensure maximum sealing or two pieces for the rear door version.

Mounting plate:

Double folded and slides into position. Adjustable in depth by steps of 25 mm with the MPD02 accessory. Mounting plate is delivered attached on the outside of the enclosure packaging. For Enclosure with rear doors, two mounting plates mounted back to back with MPBB06.

Earthing:

All panels are earthed through their fittings and are equipped with a separate earthing stud.

Finish:

240s pre-grained stainless steel (0,5 microns average).

Protection:

Complies with IP 66 | TYPE 4X, 12, 13 | IK 10. if are used with SPMSXXXOG.

Approvals:

CE, EAC, DNV-GL, GOST, Kema Keur, Lloyds shipping, cULus_listed.

Mounting requirement:

Standard delivery ready for combined installation. For stand-alone installation add side panels.

Delivery:

Frame with fitted door, rear panel, roof panel, bottom plate, mounting plate and door frame. Delivery also includes earthing bolts. Delivered on a pallet which is identical to the width of the enclosure to allow suiting without removal. All packing material is recyclable.



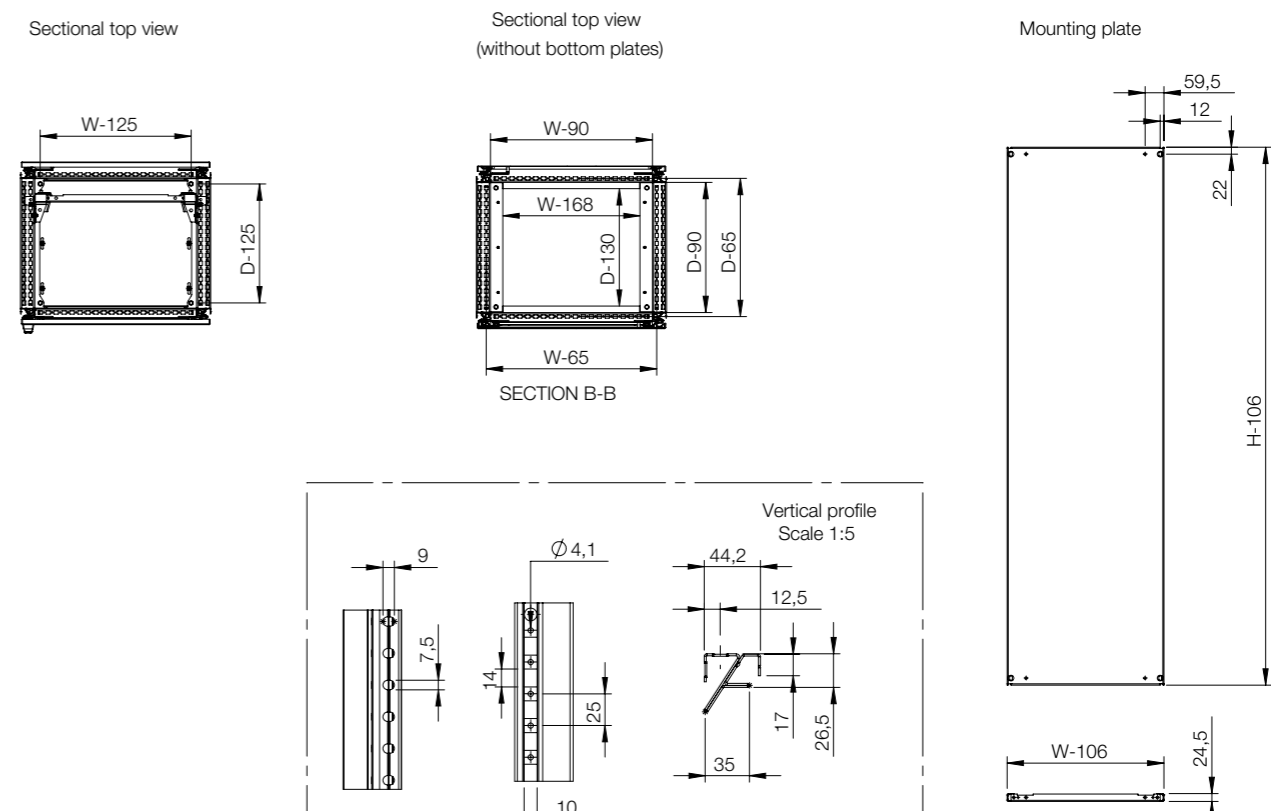
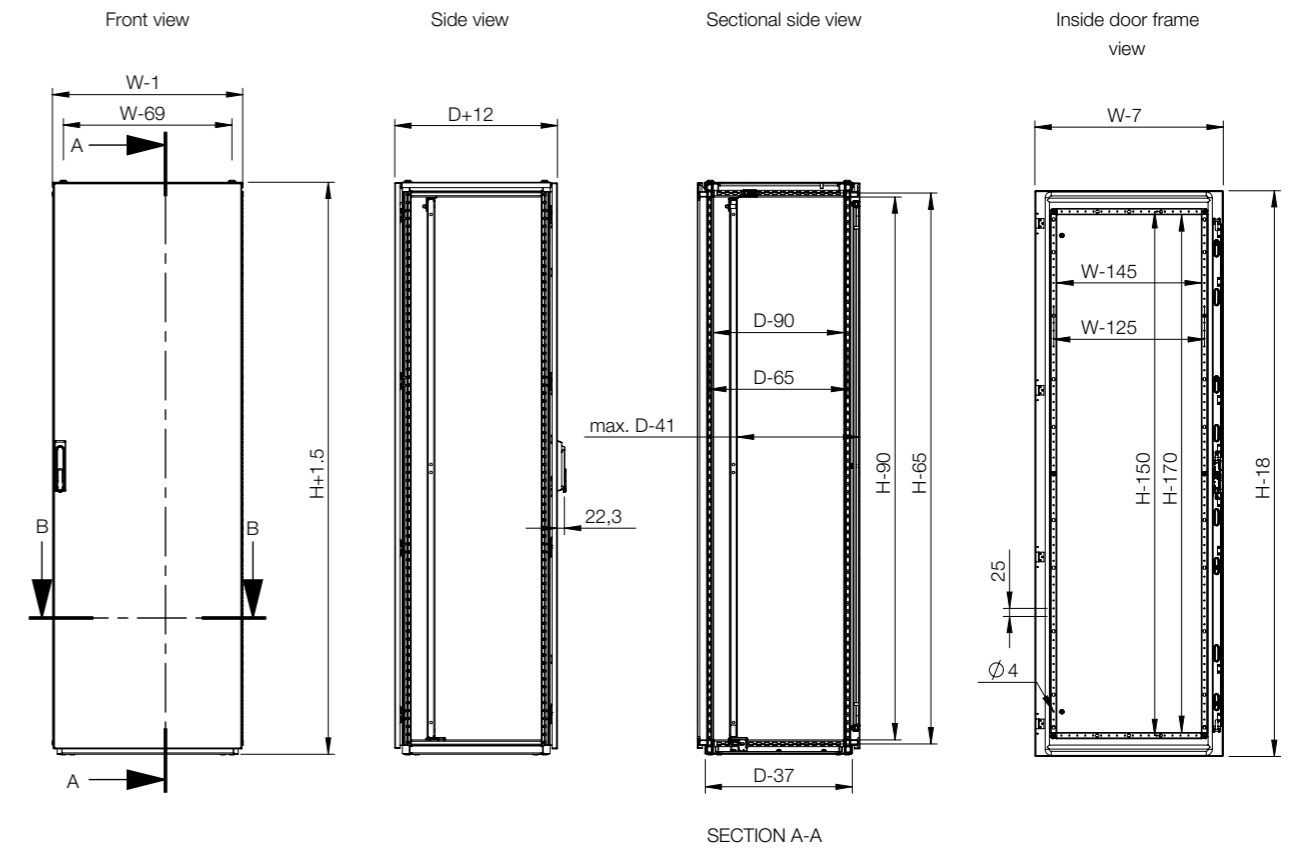
IP66 | TYPE 4X, 12 and 13 | IK10

Thickness 2 mm

Enclosure dimensions			Enclosure with MP	Enclosure without MP
H	W	D	Item no.	Item no.
2000	800	400	MCSS20084OG20	MCSS20084PEOG20
2000	800	600	MCSS20086OG20	MCSS20086PEOG20

Thickness 2.5 mm

Enclosure dimensions			Enclosure with MP	Enclosure without MP
H	W	D	Item no.	Item no.
2000	800	400	MCSS20084OG25	MCSS20084PEOG25
2000	800	600	MCSS20086OG25	MCSS20086PEOG25



IP66 | TYPE 4X, 12 and 13 | IK10

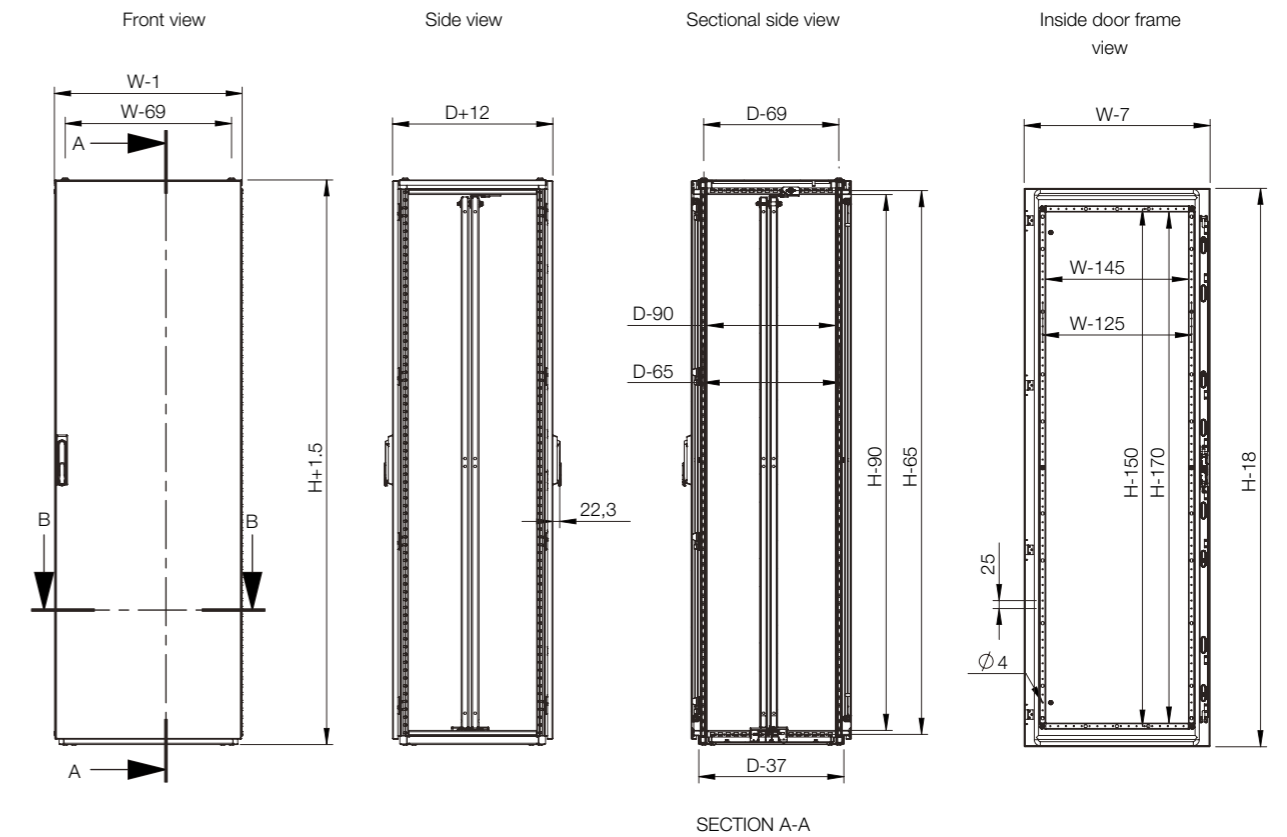
Thickness 2 mm

Enclosure dimensions			Enclosure with MP and Rear door	Enclosure without MP and with Rear door
H	W	D	Item no.	Item no.
2000	800	600	MCSS20086RD20	MCSS20086PERD20
2000	800	800	MCSS20088RD20	MCSS20088PERD20
2000	800	1000	MCSS200810RD20	MCSS200810PRD20
2000	1000	800	MCSS20108RD20	MCSS20108PERD20
2000	1000	1000	MCSS201010RD20	MCSS201010PRD20

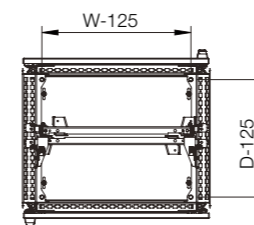
Thickness 2,5 mm

Enclosure dimensions			Enclosure with MP and rear door	Enclosure without MP and with rear door
H	W	D	Item no.	Item no.
2000	800	600	MCSS20086RD25	MCSS20086PERD25
2000	800	800	MCSS20088RD25	MCSS20088PERD25
2000	800	1000	MCSS200810RD25	MCSS200810PRD25
2000	1000	800	MCSS20108RD25	MCSS20108PERD25
2000	1000	1000	MCSS201010RD25	MCSS201010PRD25

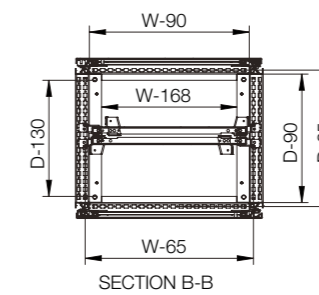
Note: The enclosure with rear doors, includes two mounting plates assembled back to back and two bottom plates.



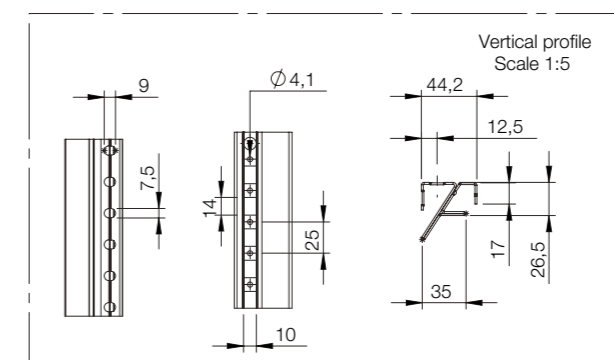
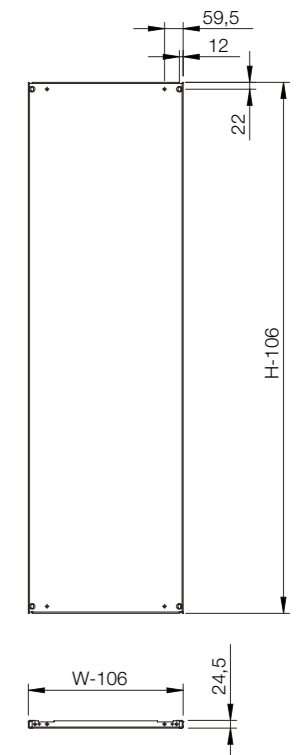
Sectional top view



Sectional top view (without bottom plates)



Mounting plate



Enclosure	Mounting								
	H	W	D	Mounting plate	Sides mounting plates	Mounting profile, in H	Mounting profile, in W	Mounting profile, in D	Click in profile, in W
With MP									
MCSS20084OG20	2000	800	400	MP2008	MP2004	CLPF2000	CLPF800	CLPF400	CLPK800
MCSS20086OG20	2000	800	600	MP2008	MP2006	CLPF2000	CLPF800	CLPF600	CLPK800
MCSS20084OG25	2000	800	400	MP2008	MP2004	CLPF2000	CLPF800	CLPF400	CLPK800
MCSS20086OG25	2000	800	600	MP2008	MP2006	CLPF2000	CLPF800	CLPF600	CLPK800
Without MP									
MCSS20084PEOG20	2000	800	400	MP2008	MP2004	CLPF2000	CLPF800	CLPF400	CLPK800
MCSS20086PEOG20	2000	800	600	MP2008	MP2006	CLPF2000	CLPF800	CLPF600	CLPK800
MCSS20084PEOG25	2000	800	400	MP2008	MP2004	CLPF2000	CLPF800	CLPF400	CLPK800
MCSS20086PEOG25	2000	800	600	MP2008	MP2006	CLPF2000	CLPF800	CLPF600	CLPK800
With Rear door and 2 x MP mounted with MPBB06									
MCSS20086RD20	2000	800	600	MP2008	MP2006	CLPF2000	CLPF800	CLPF600	CLPK800
MCSS20088RD20	2000	800	800	MP2008	2 x MP2004	CLPF2000	CLPF800	CLPF800	CLPK800
MCSS200810RD20	2000	800	1000	MP2008	2 x MP2005	CLPF2000	CLPF800	CLPF1000	CLPK800
MCSS20108RD20	2000	1000	800	MP2010	2 x MP2004	CLPF2000	CLPF1000	CLPF800	CLP1000
MCSS201010RD20	2000	1000	1000	MP2010	2 x MP2005	CLPF2000	CLPF1000	CLPF1000	CLPK1000
MCSS20086RD25	2000	800	600	MP2008	MP2006	CLPF2000	CLPF800	CLPF600	CLPK800
MCSS20088RD25	2000	800	800	MP2008	2 x MP2004	CLPF2000	CLPF800	CLPF800	CLPK800
MCSS200810RD25	2000	800	1000	MP2008	2 x MP2005	CLPF2000	CLPF800	CLPF1000	CLPK800
MCSS20108RD25	2000	1000	800	MP2010	2 x MP2004	CLPF2000	CLPF1000	CLPF800	CLPK1000
MCSS201010RD25	2000	1000	1000	MP2010	2 x MP2005	CLPF2000	CLPF1000	CLPF1000	CLPK1000
With Rear door and without MP									
MCSS20086PERD20	2000	800	600	MP2008	MP2006	CLPF2000	CLPF800	CLPF600	CLPK800
MCSS20088PERD20	2000	800	800	MP2008	2 x MP2004	CLPF2000	CLPF800	CLPF800	CLPK800
MCSS200810PRD20	2000	800	1000	MP2008	2 x MP2005	CLPF2000	CLPF800	CLPF1000	CLPK800
MCSS20108PERD20	2000	1000	800	MP2010	2 x MP2004	CLPF2000	CLPF1000	CLPF800	CLP1000
MCSS201010PRD20	2000	1000	1000	MP2010	2 x MP2005	CLPF2000	CLPF1000	CLPF1000	CLPK1000
MCSS20086PERD25	2000	800	600	MP2008	MP2006	CLPF2000	CLPF800	CLPF600	CLPK800
MCSS20088PERD25	2000	800	800	MP2008	2 x MP2004	CLPF2000	CLPF800	CLPF800	CLPK800
MCSS200810PRD25	2000	800	1000	MP2008	2 x MP2005	CLPF2000	CLPF800	CLPF1000	CLPK800
MCSS20108PERD25	2000	1000	800	MP2010	2 x MP2004	CLPF2000	CLPF1000	CLPF800	CLPK1000
MCSS201010PRD25	2000	1000	1000	MP2010	2 x MP2005	CLPF2000	CLPF1000	CLPF1000	CLPK1000

Enclosure	Mounting							
	H	W	D	Click in profile, in D	Side mounting bar	Extra width side mounting bar	Front/rear plinths (100 mm height)	Plinth side panels (100 mm height)
With MP								
MCSS20084OG20	2000	800	400	CLPK400	CMB402	CMB406OG	PFS1080-316	PSS1040-316
MCSS20086OG20	2000	800	600	CLPK600	CMB602	CMB606OG	PFS1080-316	PSS1060-316
MCSS20084OG25	2000	800	400	CLPK400	CMB402	CMB406OG	PFS1080-316	PSS1040-316
MCSS20086OG25	2000	800	600	CLPK600	CMB602	CMB606OG	PFS1080-316	PSS1060-316
Without MP								
MCSS20084PEOG20	2000	800	400	CLPK400	CMB402	CMB406OG	PFS1080-316	PSS1040-316
MCSS20086PEOG20	2000	800	600	CLPK600	CMB602	CMB606OG	PFS1080-316	PSS1060-316
MCSS20084PEOG25	2000	800	400	CLPK400	CMB402	CMB406OG	PFS1080-316	PSS1040-316
MCSS20086PEOG25	2000	800	600	CLPK600	CMB602	CMB606OG	PFS1080-316	PSS1060-316
With Rear door and 2 x MP mounted with MPBB06								
MCSS20086RD20	2000	800	600	CLPK600	CMB602	CMB606OG	PFS1080-316	PSS1060-316
MCSS20088RD20	2000	800	800	CLPK800	CMB802	CMB806OG	PFS1080-316	PSS1080-316
MCSS200810RD20	2000	800	1000	CLPK800	-	CMB1006OG	PFS1080-316	PSS1100-316
MCSS20108RD20	2000	1000	800	CLPK800	CMB802	CMB806OG	PFS1100-316	PSS1080-316
MCSS201010RD20	2000	1000	1000	CLPK1000	-	CMB1006OG	PFS1100-316	PSS1100-316
MCSS20086RD25	2000	800	600	CLPK600	CMB602	CMB606OG	PFS1080-316	PSS1060-316
MCSS20088RD25	2000	800	800	CLPK800	CMB802	CMB806OG	PFS1080-316	PSS1080-316
MCSS200810RD25	2000	800	1000	CLPK800	-	CMB1006OG	PFS1080-316	PSS1100-316
MCSS20108RD25	2000	1000	800	CLPK800	CMB802	CMB806OG	PFS1100-316	PSS1080-316
MCSS201010RD25	2000	1000	1000	CLPK1000	-	CMB1006OG	PFS1100-316	PSS1100-316
With Rear door and without MP								
MCSS20086PERD20	2000	800	600	CLPK600	CMB602	CMB606OG	PFS1080-316	PSS1060-316
MCSS20088PERD20	2000	800	800	CLPK800	CMB802	CMB806OG	PFS1080-316	PSS1080-316
MCSS200810PRD20	2000	800	1000	CLPK800	-	CMB1006OG	PFS1080-316	PSS1100-316
MCSS20108PERD20	2000	1000	800	CLPK800	CMB802	CMB806OG	PFS1100-316	PSS1080-316
MCSS201010PRD20	2000	1000	1000	CLPK1000	-	CMB1006OG	PFS1100-316	PSS1100-316
MCSS20086PERD25	2000	800	600	CLPK600	CMB602	CMB606OG	PFS1080-316	PSS1060-316
MCSS20088PERD25	2000	800	800	CLPK800	CMB802	CMB806OG	PFS1080-316	PSS1080-316
MCSS200810PRD25	2000	800	1000	CLPK800	-	CMB1006OG	PFS1080-316	PSS1100-316
MCSS20108PERD25	2000	1000	800	CLPK800	CMB802	CMB806OG	PFS1100-316	PSS1080-316
MCSS201010PRD25	2000	1000	1000	CLPK1000	-	CMB1006OG	PFS1100-316	PSS1100-316

Enclosure	Mounting						
	H	W	D	Front/rear plinths (200 mm height)	Plinth side panels (200 mm height)	Cable fixing bar (mounted below bottom plates)	Cable fixing bar (mounted above bottom plates)
With MP							
MCSS20084OG20	2000	800	400	PFS2080-316	PSS2040-316	CABP800	CAB800
MCSS20086OG20	2000	800	600	PFS2080-316	PSS2060-316	CABP800	CAB800
MCSS20084OG25	2000	800	400	PFS2080-316	PSS2040-316	CABP800	CAB800
MCSS20086OG25	2000	800	600	PFS2080-316	PSS2060-316	CABP800	CAB800
Without MP							
MCSS20084PEOG20	2000	800	400	PFS2080-316	PSS2040-316	CABP800	CAB800
MCSS20086PEOG20	2000	800	600	PFS2080-316	PSS2060-316	CABP800	CAB800
MCSS20084PEOG25	2000	800	400	PFS2080-316	PSS2040-316	CABP800	CAB800
MCSS20086PEOG25	2000	800	600	PFS2080-316	PSS2060-316	CABP800	CAB800
With Rear door and 2 x MP mounted with MPBB06							
MCSS20086RD20	2000	800	600	PFS2080-316	PSS2060-316	CABP800	CAB800
MCSS20088RD20	2000	800	800	PFS2080-316	PSS2080-316	CABP800	CAB800
MCSS200810RD20	2000	800	1000	PFS2080-316	PSS2100-316	CABP800	CAB800
MCSS20108RD20	2000	1000	800	PFS2100-316	PSS2080-316	CABP1000	CAB1000
MCSS201010RD20	2000	1000	1000	PFS2100-316	PSS2100-316	CABP1000	CAB1000
MCSS20086RD25	2000	800	600	PFS2080-316	PSS2060-316	CABP800	CAB800
MCSS20088RD25	2000	800	800	PFS2080-316	PSS2080-316	CABP800	CAB800
MCSS200810RD25	2000	800	1000	PFS2080-316	PSS2100-316	CABP800	CAB800
MCSS20108RD25	2000	1000	800	PFS2100-316	PSS2080-316	CABP1000	CAB1000
MCSS201010RD25	2000	1000	1000	PFS2100-316	PSS2100-316	CABP1000	CAB1000
With Rear door and without MP							
MCSS20086PERD20	2000	800	600	PFS2080-316	PSS2060-316	CABP800	CAB800
MCSS20088PERD20	2000	800	800	PFS2080-316	PSS2080-316	CABP800	CAB800
MCSS200810PRD20	2000	800	1000	PFS2080-316	PSS2100-316	CABP800	CAB800
MCSS20108PERD20	2000	1000	800	PFS2100-316	PSS2080-316	CABP1000	CAB1000
MCSS201010PRD20	2000	1000	1000	PFS2100-316	PSS2100-316	CABP1000	CAB1000
MCSS20086PERD25	2000	800	600	PFS2080-316	PSS2060-316	CABP800	CAB800
MCSS20088PERD25	2000	800	800	PFS2080-316	PSS2080-316	CABP800	CAB800
MCSS200810PRD25	2000	800	1000	PFS2080-316	PSS2100-316	CABP800	CAB800
MCSS20108PERD25	2000	1000	800	PFS2100-316	PSS2080-316	CABP1000	CAB1000
MCSS201010PRD25	2000	1000	1000	PFS2100-316	PSS2100-316	CABP1000	CAB1000

Enclosure	Mounting					
	H	W	D	Plain door	Side panels *	Document pocket
With MP						
MCSS20084OG20	2000	800	400	DNSS2008O20-316	SPMS2004OG20	DRBS0800-316L
MCSS20086OG20	2000	800	600	DNSS2008O20-316	SPMS2006OG20	DRBS0800-316L
MCSS20084OG25	2000	800	400	DNSS2008O25-316	SPMS2004OG25	DRBS0800-316L
MCSS20086OG25	2000	800	600	DNSS2008O25-316	SPMS2006OG25	DRBS0800-316L
Without MP						
MCSS20084PEOG20	2000	800	400	DNSS2008O20-316	SPMS2004OG20	DRBS0800-316L
MCSS20086PEOG20	2000	800	600	DNSS2008O20-316	SPMS2006OG20	DRBS0800-316L
MCSS20084PEOG25	2000	800	400	DNSS2008O25-316	SPMS2004OG25	DRBS0800-316L
MCSS20086PEOG25	2000	800	600	DNSS2008O25-316	SPMS2006OG25	DRBS0800-316L
With Rear door and 2 x MP mounted with MPBB06						
MCSS20086RD20	2000	800	600	DNSS2008O20-316	SPMS2006OG20	DRBS1000-316L
MCSS20088RD20	2000	800	800	DNSS2008O20-316	SPMS2008OG20	DRBS1000-316L
MCSS200810RD20	2000	800	1000	DNSS2008O20-316	SPMS2010OG20	DRBS1000-316L
MCSS20108RD20	2000	1000	800	DNSS2010O20-316	SPMS2008OG20	DRBS1000-316L
MCSS201010RD20	2000	1000	1000	DNSS2010O20-316	SPMS2010OG20	DRBS1000-316L
MCSS20086RD25	2000	800	600	DNSS2008O25-316	SPMS2006OG25	DRBS1000-316L
MCSS20088RD25	2000	800	800	DNSS2008O25-316	SPMS2008OG25	DRBS1000-316L
MCSS200810RD25	2000	800	1000	DNSS2008O25-316	SPMS2010OG25	DRBS1000-316L
MCSS20108RD25	2000	1000	800	DNSS2010O25-316	SPMS2008OG25	DRBS1000-316L
MCSS201010RD25	2000	1000	1000	DNSS2010O25-316	SPMS2010OG25	DRBS1000-316L
With Rear door and without MP						
MCSS20086PERD20	2000	800	600	DNSS2008O20-316	SPMS2006OG20	DRBS0800-316L
MCSS20088PERD20	2000	800	800	DNSS2008O20-316	SPMS2008OG20	DRBS0800-316L
MCSS200810PRD20	2000	800	1000	DNSS2008O20-316	SPMS2010OG20	DRBS0800-316L
MCSS20108PERD20	2000	1000	800	DNSS2010O20-316	SPMS2008OG20	DRBS0800-316L
MCSS201010PRD20	2000	1000	1000	DNSS2010O20-316	SPMS2010OG20	DRBS0800-316L
MCSS20086PERD25	2000	800	600	DNSS2008O25-316	SPMS2006OG25	DRBS0800-316L
MCSS20088PERD25	2000	800	800	DNSS2008O25-316	SPMS2008OG25	DRBS0800-316L
MCSS200810PRD25	2000	800	1000	DNSS2008O25-316	SPMS2010OG25	DRBS0800-316L
MCSS20108PERD25	2000	1000	800	DNSS2010O25-316	SPMS2008OG25	DRBS0800-316L
MCSS201010PRD25	2000	1000	1000	DNSS2010O25-316	SPMS2010OG25	DRBS0800-316L

* Material thickness for Side Panels: SPMS20XXOG20 – 2 mm and SPMS20XXOG25 – 2.5 mm.

Floor Standing Steel Range

Accessories | Mounting plate

Steel mounting plate, MP		Stainless steel, combinable enclosures, MCSS
		Required accessories
FIXATION	Flush with frame, MP included in the enclosure	Included
	Flush with frame, MP not included in the enclosure	Mounting plate brackets, MPA04
	Adjustable in depth, MP included in the enclosure	Adjustment bracket, MPD02
	Adjustable in depth, MP not included in the enclosure	Mounting plate brackets, MPA06
	Side mounting plate	Side mounting plate brackets, MPS04
	Additional mounting plate	Mounting plate brackets, MPA06
	Back to back mounting plate	Back to back MP brackets, MPBB06
HINGED	Complete height mounting plate	Mounting plate hinge kit, MPH01 Carrier bars, CB
	Partial height mounting plate	Mounting plate hinge kit, MPH01 Carrier bars, CB Mounting profiles in depth, CLPK/CLPF. 4 pcs
REINFORCEMENT	Fixation reinforcement, flush mounting	Flush MP reinforcement brackets, MPEF
	Fixation reinforcement, not flush mounting	MP reinforcement brackets, MPE Side mounting bars in depth, CMB. 2 pcs
	Mounting plate reinforcement	MP reinforcement profiles, MPR
BAYED ENCLOSURES	Continue mounting plate, flush with the frame	Filler plate, MPF. One per enclosure joining
	Continue mounting plate, no flush with the frame	Not available



Floor Standing Steel Range

Accessories | Full height doors and locking systems

Full height doors		Stainless steel, combinable enclosures, MCSS
		Required accessories
PLAIN DOOR	Replacement of standard door, 130° opening	Stainless steel plain door, DNSSXXX-316
	Additional door in the rear, 130° opening	Stainless steel plain door, DNSSXXX-316 Door mounting kit for stainless steel enclosures, DNMKS-316OG
SIDE DOOR	Side door	Not possible
RAISED SIDE DOOR	Raised side door for cabling	Not possible
	Raised side door for cabling with marshalling plate	Not possible
INNER DOOR	Inner door adjustable in depth	Inner door, DI Mild steel painted in RAL7035



Floor Standing Steel Range

Accessories

Door mounting kit, for stainless steel 316L floor standing enclosures, DNMKS-OG

Description: Door mounting kit for stainless steel 316L floor standing enclosures. Required when fitting a door. Only needed when there was no door mounted previously.

Pack quantity: 1 complete kit with hinges 316L, top and bottom brackets 316L and mounting accessories.



Item no.
DNMKS-316OG

Extra width side mounting bars, CMB-OG

Description: Profile to be mounted in the side of an combinable enclosure that allows for fixing customer specific products for additional mounting surface.

Material: 2 mm galvanized steel.

Pack quantity: 6 profiles with mounting accessories.



For enclosure		Item no.
W		
400		CMB406OG
600		CMB606OG
800		CMB806OG
1000		CMB1006OG

Viewing window, HMIW

Description: Provide protection for displays and other control components.

Pack quantity: 1 piece with mounting accessories.



Dimensions		Viewing area		No. of locks	Item no.
H	W	h	w		
710	580	530	400	3	HMIW0715807-316

Document pocket, DRBS

Description: A large document pocket fixed directly onto the door. Usable depth: 45 mm.

Material: Stainless Steel 316L.

Pack quantity: 1 piece with mounting accessories.



Description	Item no.
For 800 mm wide doors	DRBS0800-316L
For 1000 mm wide doors	DRBS1000-316L

Door stop, DSTP02-316

Description: To lock an open door in position. Mounted directly to the door frame and on the enclosure profile. Allow the enclosure door to be opened up to 110 degree.

Material: Stainless Steel 316L.

Pack quantity: 1 piece with mounting accessories.



Item no.
DSTP02-316

Door stop with opening adjustment

Door wheel, DW

Description: For easier closing and positioning of a heavily equipped door (cooling units, etc). Mounted directly to the door frame on the bottom of the door. Highly recommended when fitting loads from 30 kg on the enclosure door.

Material: Zinc plated steel.

Pack quantity: 2 pieces with mounting accessories.



Item no.
DW01

Floor Standing Steel Range

Accessories

Door Plastic Support, DPSL

Description: Helps to centre the door in case of an uneven floor, as well as allowing easier closing and positioning when a heavy load is mounted (cooling units, etc). Mounted directly to the door frame on the bottom and top of the door. Highly recommended when fitting loads from 30 kg on door.

Pack quantity: 2 plastic supports with mounting accessories.



Item no.
DPSL01

Door switch, DSW

Description: Door switch to activate any electrical device (lighting, signalling, alarms, etc.). Can be mounted after installing the enclosure thereby keeping the door opening free. Fixed on the inside hole pattern of the enclosure's frame in floor standing enclosures. Cable entry M20.

Switch capacity: 3A / 240V.

Approvals: CE, EAC, UL

Pack quantity: 1 piece with mounting accessories.



Item no.
DSW01

Drain-Breather, DPE

Description: Combination of drainage and breathing elements especially for use in potentially explosive atmosphere (Ex e).

Degree of protection: IP 66

Temperature: -30°C to 100°C

Pack quantity: 1 piece



Item no.
DPE3004S

Push button cover, PBW

Description: Protector guard for push button switch

Material: Stainless Steel AISI 316L and glass 150x130x4.

Dimension: 180 x 160 x 70

Degree of protection: IP 66, NEMA 4X

Pack quantity: 1 pcs with mounting accessories



Item no.
PBW181607-316

Door frame mounting profiles, DCP-OG

Description: Horizontal profiles with 25 mm hole pattern. Fits directly onto the door frame. For easy mounting of light equipment by using CNT05 screws, hole pattern of 4.5 mm and 6.5 mm in diameter.

Material: 2 mm zinc plated steel.

Pack quantity: 20 bars with mounting accessories.



W	Item no.
800	DCP0802OG
100	DCP1002OG

Floor Standing Steel Range

Lifting and baying

Individual enclosures

Description: Individual floor standing enclosures can be transported by crane safely using the lifting eye bolts, LE9316SS. The load that is installed inside the enclosure is systematically distributed allowing for a smooth transit. Permissible loads are dependent upon the lifting angle.

- Permissible load:**
- Cable angle 45° F= 4800 N
 - Cable angle 60° F= 6400 N
 - Cable angle 90° F= 13600 N



Internal baying brackets, CCI08IP66

Description: Baying brackets provide a rigid reinforcement of the enclosure assembly. The correct spacing between the enclosures is assured. Tools are not required for installation.

Material: 3 mm Stainless Steel 316L

Pack quantity: 8 brackets with mounting accessories.

Item no.
CCI08IP66



Two bayed enclosures

Description: Two floor standing enclosures bayed side by side can be transported by crane safely using the lifting devices, LC02-316. The load that is installed inside the enclosure is systematically distributed allowing for a smooth transit. The lifting accessories required will depend upon the enclosure as well as its configuration, but using the combining frame 1 x BK20XXXIP66, 1 x CCI08IP66 and 1 x CCM04IP66 is a must.

- Permissible load:** Specified for a cable angle of 60°
- F1= 7000N
 - F2= 7000N



Floor standing Stainless Steel IP66 combining frame, BK

Description: Stainless steel 316 floor standing enclosures combining kit is used for baying two or more enclosures together, side by side. This kit allows build IP66 enclosures assemblies.

Pack quantity: 1 pcs along with mounting accessories.

For enclosure	W	Item no.
Floor Standing	400	BK2004IP66
	600	BK2006IP66
	800	BK2008IP66
	1000	BK2010IP66



Three bayed enclosures

Description: Three floor standing enclosures bayed side by side can be transported by crane safely using the lifting devices, 2 x LC02-316. The load that is installed inside the enclosure is systematically distributed allowing for a smooth transit. The lifting accessories required will depend upon the enclosure as well as its configuration, but using the combining frame 2 x BK20XXXIP66, 2 x CCI08IP66 and CCM04IP66 is a must.

- Permissible load:** Specified for a cable angle of 60°
- F1= 7000N
 - F2= 14000N
 - F3= 7000N



Internal top and bottom baying kit, CCM04IP66

Description: For extra support when bayed enclosures are fully equipped and require lifting.

Material: 3 mm Stainless Steel 316L

Pack quantity: 6 brackets with mounting accessories.

Item no.
CCM04IP66



Floor Standing Steel Range

Accessories | Lifting and baying

Lifting eye bolts, LE9316SS

Description: Mounts directly to the frame corner pieces of the enclosure for when lifting operations are required. Complies with DIN 580 lifting requirements. M12 thread.

Maximum load: 3400N per lifting eye with max angle of 45°. Please follow nVent HOFFMAN lifting instructions.

Pack quantity: 4 pieces.



Description	Item no.
Lifting eyes SS316L	LE9316SS

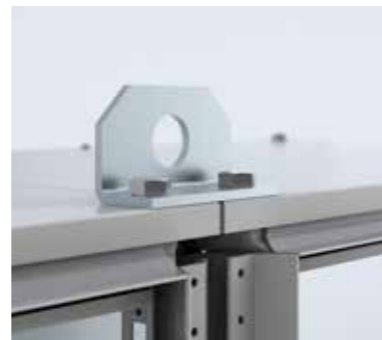
Lifting possibilities and assembly with loading capacity for the different solutions

Lifting device, LC02-316

Description: For optimal weight distribution when lifting bayed enclosures. To be used in combination with baying bracket.

Material: 5 mm Stainless Steel 316L.

Pack quantity: 2 pieces with mounting accessories.



Pack quantity	Item no.
2	LC02-316

Lifting possibilities and assembly with loading capacity for the different solutions





02 Wall Mounted Enclosures

Stainless steel

Single door, ASR.....	67
Accessories	
General accessories	70

Wall Mounted Enclosures Product Development Drivers



01 WIDE RANGE OF AVAILABLE SIZES

nVent HOFFMAN offers a wide range of mild steel enclosures in standard sizes. This makes it possible for nVent HOFFMAN to deliver mild steel enclosures that can suit most applications, directly from stock, ensuring a short delivery time.



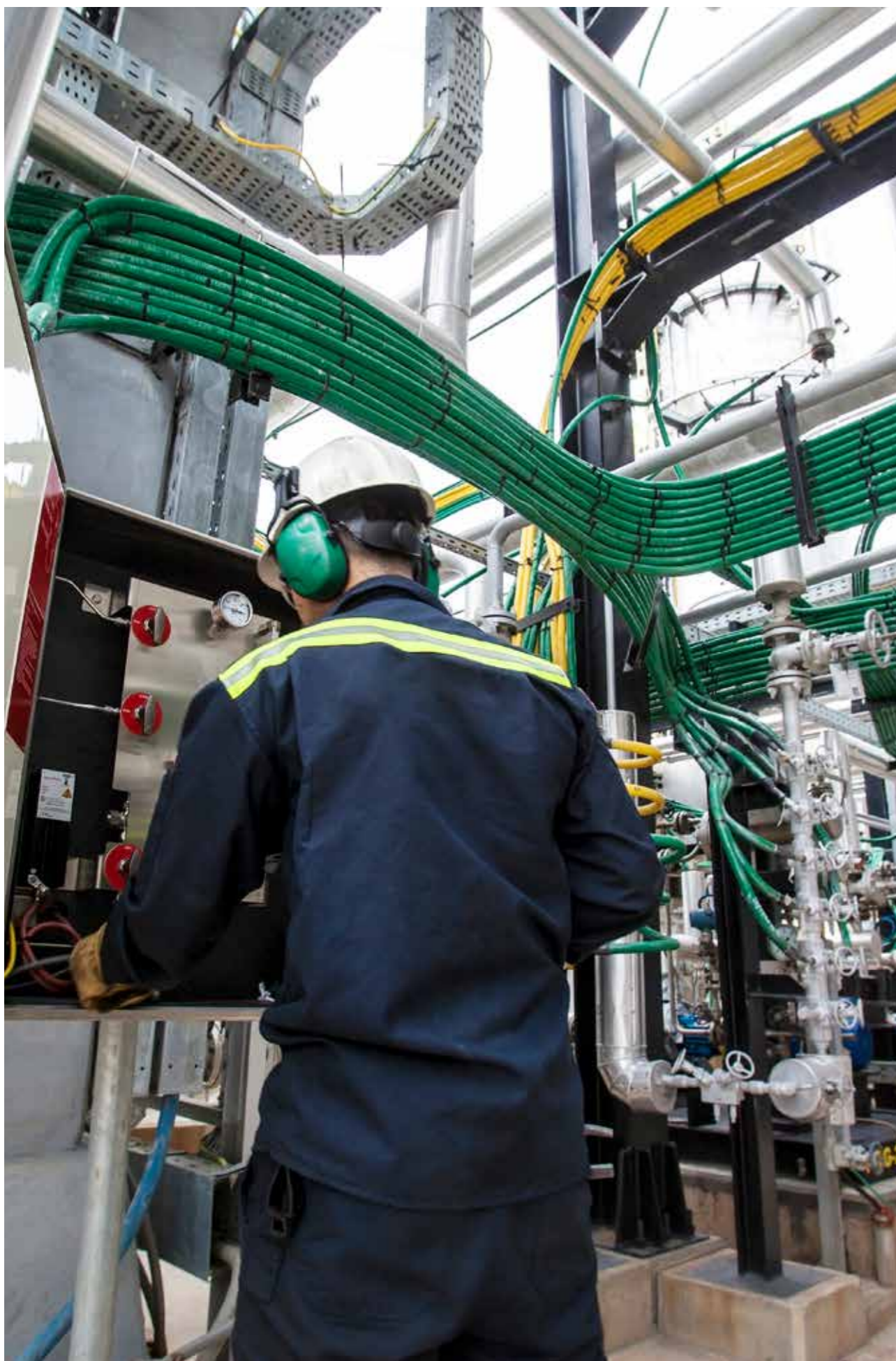
02 REDUCED ASSEMBLY TIME

The assembly time is significantly reduced thanks to accessories that do not require any machining, such as interior profiles, 180° hinges, door switches, and more.



03 HIGH LEVEL OF PROTECTION

A metallic lock prevents undesired door opening, which may happen if the double-bit lock insert is broken. This increases safety. The improved espagnolette locking system makes the locking smoother, and the positioning of the door more precise, guaranteeing the sealing between the gasket and the rain gutter.



Wall Mounted | Stainless Steel Range

The enclosures in the wall mounted stainless steel range, with single or double door versions, are available in stainless steel type 316L and have a 240s pre-grained finish (average 0.5 microns). The range has different properties to comply with various conditions in many environments, and is ideal for both indoor and outdoor installations.

Type 316L stainless steel enclosures are ideal for installations in coastal areas, marine applications subject to saltwater spray, industrial equipment exposed to corrosive process chemicals, and in any area with high exposure to chloride.

The design is characterized by a sturdy cruciform body, folded from a cold pressed sheet steel plate. The enclosure's edge is folded in the shape of a channel to avoid prevent water from stagnating on the seal.

This enclosure range has been designed to comply with the relevant standard for empty enclosures, IEC 62208, and is regularly audited by an independent laboratory, DEKRA, which allows nVent HOFFMAN to attach the KEMA-KEUR mark to its wall mounted stainless steel enclosures.

Maximum protection for the user and the equipment is achieved thanks to the high protection degrees, IP 66 according to IEC 60529, and IK 10, according to IEC 62262.

Enclosures with single doors or panels are closed with a three point espagnolette locking system. The doors are also equipped with a seamless silicon gasket. A wide range of accessories are available to allow for many different configurations. The same accessories

may be used on all enclosure versions, since all enclosures are designed around the same platform. This makes engineering easier and allows for stock reduction with panel builders and distributors.

The assembly of the enclosures and accessories is easy, which contributes to reduced assembly time and increased competitiveness.

The door opens within the outer dimensions of the enclosure body, allowing enclosures to be mounted side by side without the doors interfering.

The enclosures can be attached to a wall (by) using bolts, which are pulled through the rear wall of the enclosure. IP ratings are guaranteed by using plastic washers or wall mounting brackets when mounting (in this way) with bolts.

All enclosures in the range have UL certification for the US, CSA for Canada, GOST and EAC for Russia and others, which makes export easier, especially for machine builders.

nVent HOFFMAN Holding AB is an approved supplier of indoor and outdoor enclosures to SAUDI ARAMCO, holding Vendor ID No. 10054761. nVent HOFFMAN has the following manufacturing facility approved by SAUDI ARAMCO and included as part of RVL.

- SC Eldon SRL, Romania (Plant ID 30007326) approved for supply of 9COM Material Ref. 6000002697 against 34-SAMSS-821 (outdoor enclosures).

Wall Mounted Enclosures Steel Range | Stainless Steel Single door | ASR

IP 66 | TYPE 4X, 12, 13 | IK 10



Material:

AISI 316L pre-grained stainless steel.
Body: 2 mm.
Door: 2 mm.
Gland plate: 2 mm
Mounting plate: 2mm galvanized steel.

Body:

Folded and seam welded with wall mounting brackets welded on the rear.

Door:

Corner formed in one piece. Surface mounted with 130° opening. Concealed AISI 316L stainless steel hinges with captive pin. Can be mounted to give left or right hand opening. Sealing is ensured by an injected one piece polyurethane gasket. Welded studs M6x13 for fixing the door profiles and drawing pocket.

Lock:

With T-Handle lock with key 333 in Stainless Steel 316L, and espagnolette three point locking in Stainless Steel 316.

Mounting plate:

The mounting plate is marked vertically at 10 mm intervals for easy horizontal positioning of equipment. On the top and bottom there are holes to facilitate cable fixing. Fixed onto M8 press welded studs to the rear of the enclosure. All sides from 800 mm and above are strengthened by folded edges. By using the AMG accessory the mounting plate position can be adjusted to any depth.

Cable access:

With gland plate in the bottom to make cabling onto the mounting plate easier.

Protection:

Corresponds with IP66 | TYPE 4x, 12, 13 | IK 10.

Finish:

240s pre grained stainless steel (average 0,5 micron).

Approvals:

CE, DNV-GL, GOST, Lloyds shipping, Rs.

Delivery:

Enclosure with door, mounting plate, gland plate and mounting accessories.



Dimensional table | ASR

IP 66 | TYPE 4X, 12, 13 | IK 10

With mounting plate

Enclosure dimensions			Mounting plate dimensions		Usable depth		N° of locks	Item no.
H	W	D	h	w	d			
800	800	300	770	750	282	1	ASR0808030OG	
1000	800	400	970	750	382	1	ASR1008040OG	
1200	800	300	1170	750	282	1	ASR1208030OG	
1200	800	400	1170	750	382	1	ASR1208040OG	

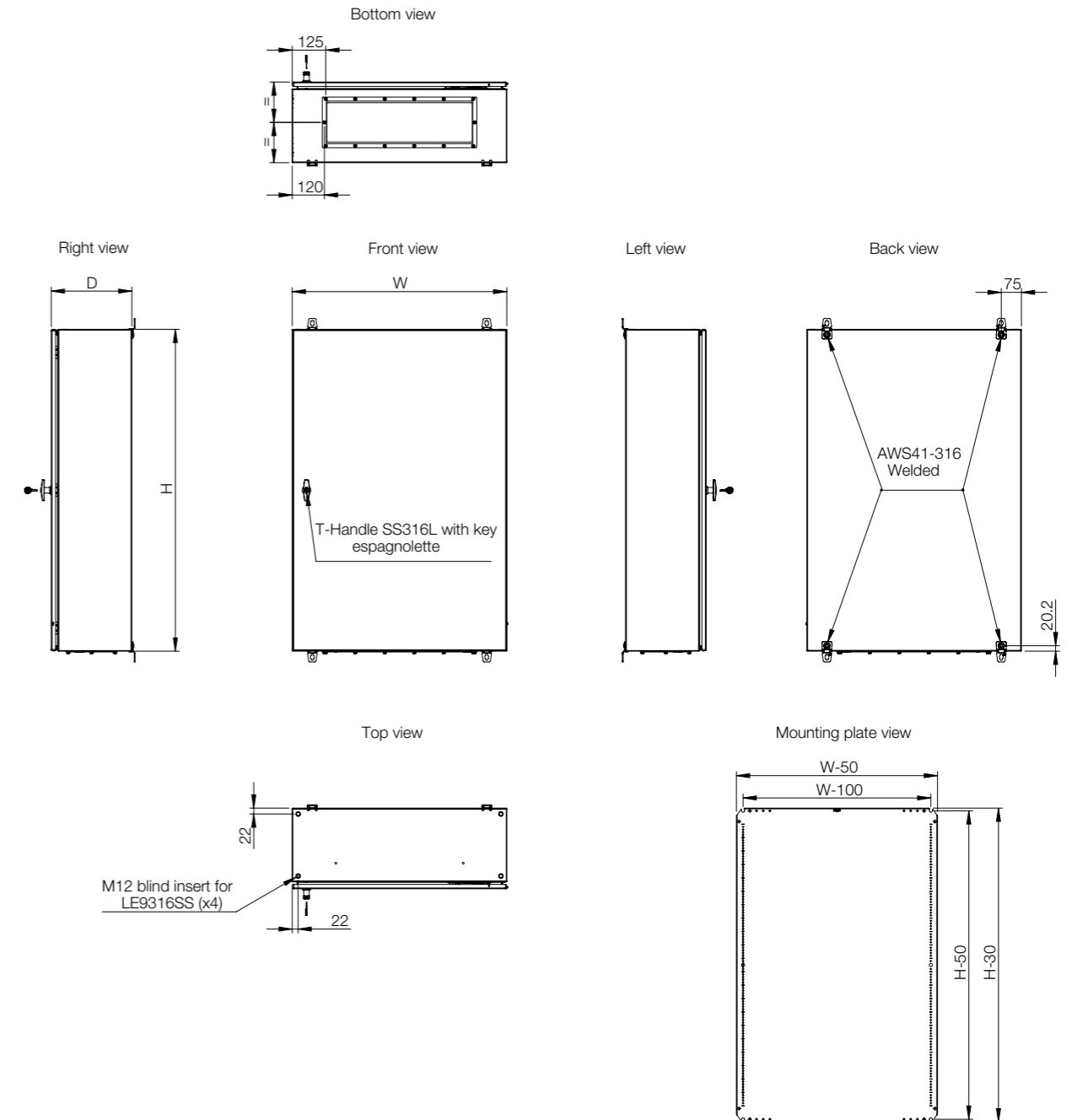
Without mounting plate

Enclosure dimensions			Mounting plate dimensions		Usable depth		N° of locks	Item no.
H	W	D	h	w	d			
800	800	300	770	750	282	1	ASR0808030PEOG	
1000	800	400	970	750	382	1	ASR1008040PEOG	
1200	800	300	1170	750	282	1	ASR1208030PEOG	
1200	800	400	1170	750	382	1	ASR1208040PEOG	

Accessories selection matrix | ASR

Enclosure	Mounting					Door stop	Door switch	Interior profiles
	H	W	D	Steel mounting plate	Depth adjustment kit			
With MP								
ASR0808030OG	800	800	300	AMP08080	AMG300	ADO202S	ADSW01	DIP300
ASR1008040OG	1000	800	400	AMP10080	AMG400	ADO202S	ADSW01	DIP400
ASR1208030OG	1200	800	300	AMP12080	AMG300	ADO202S	ADSW01	DIP300
ASR1208040OG	1200	800	400	AMP12080	AMG400	ADO202S	ADSW01	DIP400
Without MP								
ASR0808030PEOG	800	800	300	AMP08080	AMG300	ADO202S	ADSW01	DIP300
ASR1008040PEOG	1000	800	400	AMP10080	AMG400	ADO202S	ADSW01	DIP400
ASR1208030PEOG	1200	800	300	AMP12080	AMG300	ADO202S	ADSW01	DIP300
ASR1208040PEOG	1200	800	400	AMP12080	AMG400	ADO202S	ADSW01	DIP400

Dimensional drawing | ASR



Wall Mounted Steel Range Accessories

Document pocket, DRA

Description: Self adhesive, for DIN A4
Usable depth: 30 mm.
Material: Thermoplastic.
Pack quantity: 1 piece with mounting accessories.

Item no.

DRA04



Document pocket, DRBS

Description: A large document pocket fixed directly onto the door.
Usable depth: 45 mm.
Material: Stainless Steel 316L
Pack quantity: 1 piece with mounting accessories

Item no.

DRBS03030-316L



Door stop, ADO

Description: Door stop to fit all wall mounted enclosure dimensions. To secure the door in an open position to the degree that meets user requirements. Door stop can be mounted at the top or bottom of the enclosure. Machining is required.

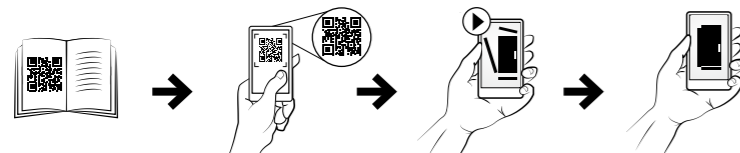
Pack quantity: 1 piece with mounting accessories.

Material

2.5 mm stainless steel AISI 316L

Item no.

ADO202S



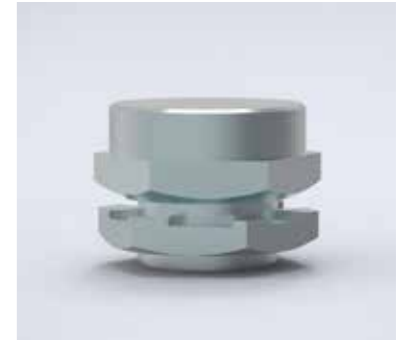
Doorstop with opening adjustment

Drain-Breather, DPE

Description: Combination of drainage and breathing elements especially for use in potentially explosive atmosphere (Ex e).
Degree of protection: IP 66
Temperature: -30°C to 100°C
Pack quantity: 1 piece

Item no.

DPE3004S

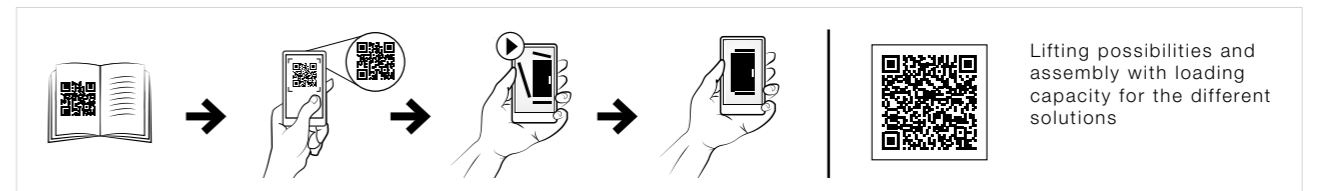


Lifting eye bolts, LE

Description: M12 thread. Complies with DIN 580 lifting requirements.
Material: Stainless Steel AISI 316L.
Pack quantity: 4 pieces.

Item no.

LE9316SS



Lifting possibilities and assembly with loading capacity for the different solutions

Door switch, ADSW

Description: Door switch to activate any electrical device (lighting, signalling, alarms, etc.) designed for wall mounted enclosures. Cable entry M20. In stainless steel enclosures, machining is required.

Switch capacity: 6A / 230V.

Approvals: CE, EAC, cULus listed.

Pack quantity: 1 piece with mounting accessories.

Item no.

ADSW01



Certifications and approvals

nVent HOFFMAN has obtained all necessary certifications and approvals through relevant performance and quality tests, to make customers feel confident that all enclosures meet relevant industry specifications and regulations.

About the IEC/EN standards

All nVent HOFFMAN's enclosures are designed and developed with due regard to current, relevant international regulations, legislations and standards. In addition, nVent HOFFMAN's development engineers add many years of experience to these formal requirements to meet customer needs for user friendly and safe products.

The International Electrotechnical Commission (IEC) is a leading global organization that prepares and publishes International Standards for all electrical, electronic and related technologies.

The 60000 IEC series of standards are also found preceded by EN to indicate that the IEC standards are harmonized as European standards IEC 62208 corresponds to EN 62208, for example.

Listed below are some of the main standards that nVent HOFFMAN conforms to as a manufacturer of empty enclosures:

IEC 62208	Empty enclosures for low-voltage switchgear and control gear assemblies
IEC 60529	Degrees of protection provided by enclosures. (European IP code)
IEC 62262	Degrees of protection provided by enclosures for electrical equipment against external mechanical impacts. (IK codes)
IEC 61439	Low-voltage switchgear and control gear assemblies.
IEC 60204	Electrical equipment of machines.

Certificates:

The enclosures and accessories have been tested by an independent laboratory. Testing was carried out in accordance with BS EN 60529:1992: + A2:2013.

Product description	Degree of protection
MCSS-316 bayed	IP 66
MCSS-316 single enclosure	IP 66
ASR-316	IP 66
Viewing window made in stainless steel 316	IP 66

Aramco approval:

nVent HOFFMAN Holding AB is an approved supplier for indoor and outdoor enclosures by SAUDI ARAMCO, holding Vendor ID No. 10054761.

nVent HOFFMAN's production facility, SC nVent HOFFMAN SRL, Romania (Plant ID 30007326), is approved for supply of 9COM, and it is included as part of RVL.

Indoor enclosures:

- Mild Steel, Floor Standing Enclosures: MCS/MCD
- Material Ref. 6000002697 against 34-SAMSS-820 (indoor enclosures)

Outdoor enclosures:

- Stainless Steel, Floor Standing Enclosures: MCSS
- Material Ref. 6000002698 against 34-SAMSS-821 (outdoor enclosures).

Aramco Overseas Company B.V.
Scheepvaartsingel 62 - 66
2517 CX The Hague
The Netherlands

Tel: +31 (0) 88 263 2000
Fax: +31 (0) 88 262 3000
www.aramcooverseas.com

aramco



SC ELDON SRL
ATTN: MR. A. SZABO
CALLE BRUXELLES 4
0807165 PREJMER
ROMANIA

The Hague, December 3, 2015
AOC Ref: ASC/107000106326

SUBJECT: PLANT EVALUATION

Vendor ID: 10054761 - Plant ID: 30007326

Dear Mr. Szabo,

As a result of the plant evaluation conducted on April 15, 2015 we are pleased to inform you that your company is **Approved** to supply the 9CCM material(s) listed in the attachment.

This approval is granted for your manufacturing plant **SC ELDON SRL in PREJMER, ROMANIA**

This approval should not be regarded as a commitment from Aramco Overseas Company (AOC) to purchase from you. However, your company will have the opportunity along with other approved suppliers to respond to requests for quotation in accordance with AOC's established policies and procedures.

We would like to take this opportunity to thank you for your interest in doing business with AOC and Saudi Aramco. Please quote the above referenced Vendor ID and Plant ID in all future correspondence.

For any questions regarding this notification please contact inspection@aramcooverseas.com

Sincerely,

Supplier Relations Group

by Aramco Supplier Relations Group of the following:
purchasing fabrication of major components)



Transport and lifting

Meeting customer requirements in all aspects is crucial to nVent HOFFMAN. This means that factors such as transport, site installation, and permitted loads within the enclosure must be considered during the design work. More details on these aspects are presented in the following sections to offer all customers the best support possible.

Continuous development of both support and services (offered), as well as of all products, is also crucial to nVent HOFFMAN. New requirements and new ideas from customers and our own people lead to improvements, such as increased suitability for many different environments, better accessory compatibility, simplified installation, and reduced risk of damages.

An important part of nVent HOFFMAN's service program is to provide good documentation to all customers to ensure relevant information needed is available.

The main purpose is to make engineering and other tasks as easy as possible for our customers.

nVent HOFFMAN's enclosures comply with the strictest of standards, EN 62208 for empty enclosures. This standard governs enclosure requirements and the tests that must be carried out. DEKRA laboratories perform all such tests for nVent HOFFMAN. Customers who need test certificates will find these on nVent HOFFMAN's websites.

IEC EN 62208 is a standard recognized internationally, which stipulates all the requirements that need to be fulfilled by enclosures that are used in low-voltage switchgear and control gear assemblies. A series of white papers have been published by nVent HOFFMAN, since sharing information is one of the obligations to comply with the standard.

The purpose of these papers is to provide information and explain implications of the standard.

All markets are competitive, and construction and installation work need to be as smooth as possible and on time. nVent HOFFMAN's contribution is to make sure that the installation of enclosures can be made fast and easy, with maximum workplace safety.

It is important for both customer requirements and site limitations that the best lifting decisions are made on enclosures and accessories. Since weights that can be loaded often are specified in Kilograms (Kg), and permissible loads are specified in Newton (N) as a display of force, a conversion needs to be made.

The formula to work out a force is shown below along with a conversion to the kilogram (Kg):

Force (N) = mass (Kg) x acceleration (m/s²)

Acceleration due to gravity is measured at 9.8m/s² and occurs when an object is falling to the earth.

1 N is a force of 1 with acceleration due to gravity with means from the above formula that the below applies when converting from Force (N) to mass (Kg):

$1N = 1Kg \times 9.8(m/s^2) = 9.8Kg$

Therefore, one newton equals 9.8 kilograms.



Transport limitations for containers by sea

The use of containers reduces the risk of damage to cargo, speeds up transportation of small-piece cargo, and makes loading and unloading easier.

It is imperative to nVent HOFFMAN that shipments arrive on time and in good condition, which is very likely when container shipping is used.

Sea container dimensions

	20 Feet container		40 Feet container		40 Feet high cube	
Specifications	8'6" Standard		8'6" Standard		9'6" Super Hi-Cube	
Inside cubic capacity	32.8 cu.m (1,158 cu.ft)		67.2 cu.m (2,372 cu.ft)		75.9 cu.m (2,679 cu.ft)	
Cargo capacity	21,640 kg (47,716 lbs.)		26,500 kg (58,433 lbs.)		26,330 kg (58,058 lbs.)	
Tare weight	2,360 kg (5,204 lbs)		3,980 kg (8,776 lbs)		4,150 kg (9,150 lbs)	
	Outside	Inside	Outside	Inside	Outside	Inside
Length	6.05 m (19.84 ft)	5.90 m (19.35 ft)	12.01 m (40.00 ft)	12.01 m (39.39 ft)	21.19 m (19.84 ft)	12.01 m (39.39 ft)
Width	2.44 m (8.00 ft)	2.35 m (7.71 ft)	2.44 m (8.00 ft)	2.35 m (7.71 ft)	2.44 m (8.00 ft)	2.35 m (7.71 ft)
Height	2.59 m (8.50 ft)	2.38 m (7.80 ft)	2.59 m (8.50 ft)	2.38 m (7.80 ft)	2.90 m (9.50 ft)	2.69 m (8.82 ft)

Transport limitations by plane

Three types of aircraft are used for international freight traffic:

- **Pax version (passenger aircraft)** - normal passenger aircraft, where cargo holds are situated in the lower cargo compartment - referred to as lower deck. Heights 60-160 cm (depending on aircraft type), maximum weight up to 35 tonnes (depending on number of passengers);
- **Freighter** - cargo aircraft used only for the shipment of goods. Up to 300 cm load height (main deck) and max. load weight of up to 140 tonnes (depending on aircraft type);
- **Combi:** only produced by Boeing. The rear section of the aircraft follows the design of a freighter and the front section that of a passenger aircraft. The advantage of this type is that it provides the best possible combination for freight and passenger aircrafts; max. load height is 250 cm to 300 cm.

A distinction is also made between short-haul and long-haul flights. The type of aircraft shown in the table are partially used for short-haul flights only. Therefore, special attention should be paid to package dimensions.

International aircraft types

Model	Max. height of cargo hold
McDonnell Douglas MD-81/MD-87	73 cm
Boeing 727	111 cm
Boeing 737	86 cm
Fokker 100	60 cm
Fokker 50	65 cm
Airbus 320	114 cm
Airbus 330/340/380	160 cm
Boeing 747/763 (pax version)	160 cm
McDonnell Douglas MD 11	160 cm
MD 11F (freighter)	240 cm
Boeing 727 (freighter and combi)	300 cm
Boeing 777 (freighter)	300 cm

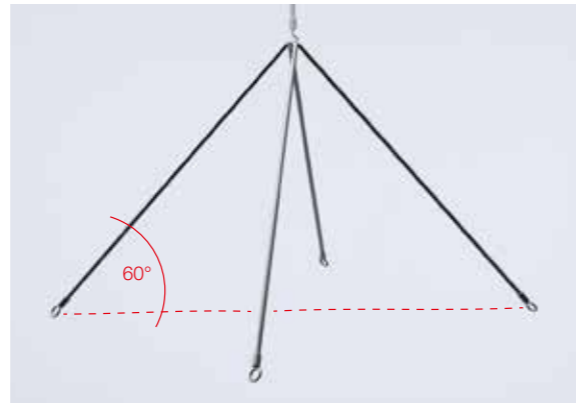
Transport

nVent HOFFMAN complies with the standard IEC 62208, which states that “Where required, enclosures shall be provided with the appropriate lifting devices or transport means”. To live up to the requirements stated in the standard, as well as nVent HOFFMAN’s safety orientation, nVent HOFFMAN offers different accessories to guarantee safe transport. The lifetime capacity of the enclosures with the available accessories has been tested according to the same standard, IEC 62208. Details on the test procedures can be found in chapter 9.5. of the description of the standard.

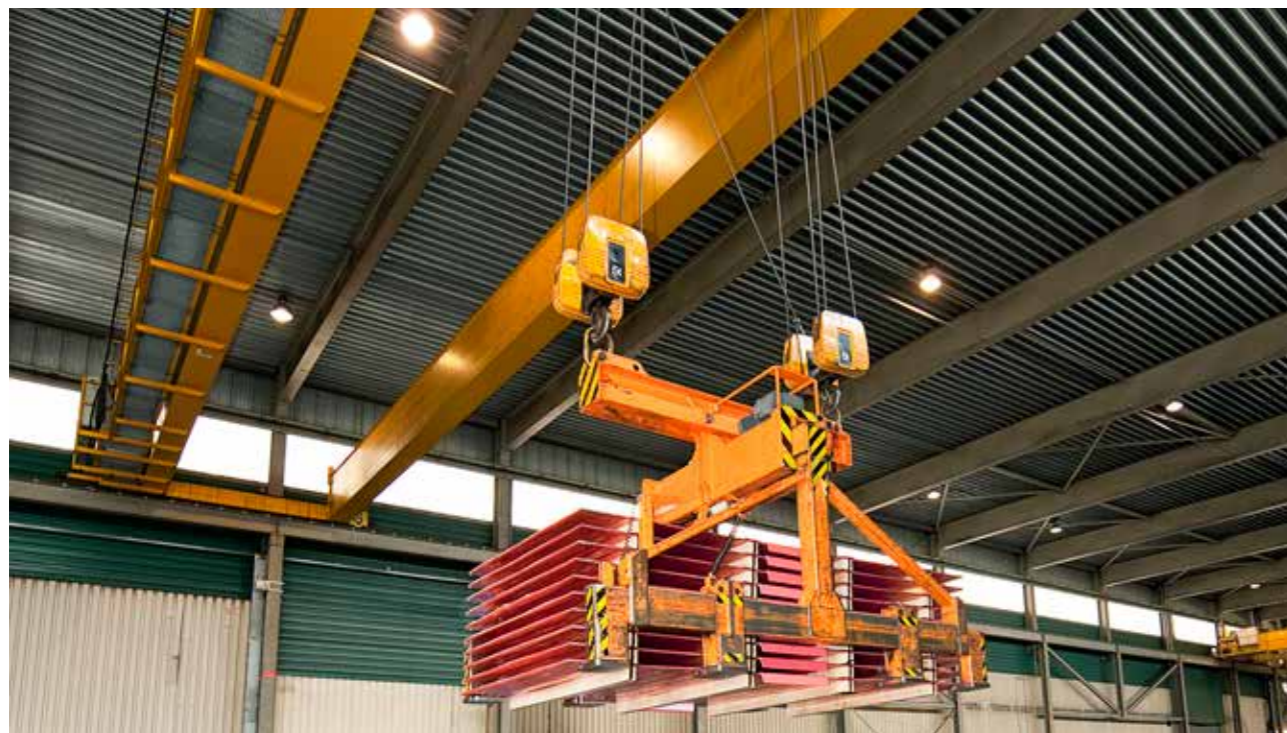
Transport by crane

nVent HOFFMAN’s floor standing enclosures can be lifted by a crane if the correct accessories are mounted and used properly. The enclosures can be lifted either individually or bayed. The lifting angles may have to be different depending on the installation requirements, which will affect the lifting capacity. nVent HOFFMAN offers standard accessories for lifting of both single and bayed enclosures.

Crane lifting angles



- 60° - A crane can lift floor standing enclosures by attaching the lifting device to the lifting eye bolts, creating an angle of 60 degrees relative to the enclosure’s roof plate;
- 90° - A crane can lift floor standing enclosures by attaching the lifting device to the lifting eye bolts, creating an angle of 90 degrees relative to the enclosure’s roof plate;
- Cable angles at 90 degrees relative to the enclosure’s roof plate will support the heaviest load when lifted.



Transport by forklift

nVent HOFFMAN’s floor standing enclosures can be moved either individually or bayed.

In either case, it is important that the applicable plinths are fitted to ensure that the forklift’s forks can be placed underneath the enclosure(s) to secure a safe transport.

nVent HOFFMAN’s combining plinths should be used when moving bayed floor standing enclosures. These plinths should be fitted between bayed enclosures for strength and rigidity.

All nVent HOFFMAN’s floor standing enclosures are delivered fixed to a wooden pallet to ensure smooth transport. The forks of the forklift need to be positioned underneath the enclosure(s) as far as possible from each side to ensure the full loading capacity can be utilized. Plinth combining profiles (PCP/ PCPK) must be used when transporting bayed floor standing enclosures to ensure that the specified load ratings stated are not exceeded.

Care must be taken when using a hand pallet truck to not push the top and bottom wooden members apart. This can break the pallet and cause the enclosure to tip over. Ensure that the hand pallet truck is fully underneath the load before jacking the forks up.

A. When moving a single enclosure

To ensure proper transport for a floor standing enclosure.

B. When moving bayed enclosures

To ensure proper transport for bayed floor standing enclosures, with the plinths already assembled, the plinth combining profiles must be used to ensure rigid joining between the plinths.

The transport can be made using the pallet supplied, or the applicable plinth.





Procurement

This section presents details on lead time, drawing approval, and product delivery.

Orders

Unless otherwise agreed in writing, nVent HOFFMAN expects written purchase orders to be submitted, with products ordered and requested delivery date(s) clearly stated. An express confirmation will be provided for all product orders.

Purchase orders should be sent to nVent HOFFMAN addresses as follows:

Country	Mail address
Norway	e.orders.no@nvent.com
Sweden	e.orders.se@nvent.com
The Netherlands	e.orders.nl@nvent.com
Belgium	e.orders.be@nvent.com
Denmark	e.orders.dk@nvent.com
Germany	e.orders.de@nvent.com
The UK	e.orders.uk@nvent.com
Spain	e.orders.es@nvent.com
Portugal	e.orders.pt@nvent.com
Middle East	e.orders.me@nvent.com

Lead time

All the products listed in this catalogue are made-to-order, and the default ex-works lead time is 25 working days. However, the confirmed delivery time can vary depending on the available manufacturing capacity, the size of the order, additional customer requirements, and on the availability of materials.

The ex-works lead time refers to the time between the initiation and completion of the production process, and the availability of the goods to be collected by the customer. The lead time starts counting when all drawings within one purchase order are approved by the customer.

Drawing approval

- All customized products purchased for the first time must be approved by the customer;
- Any revision to an existing customized product will result in a revised drawing that must be approved by the customer. In such a case, the item number remains unchanged unless otherwise requested by the customer;
- The customer cannot use an item number for a specification that is different from the current drawing in nVent HOFFMAN's system. In such an event, the customer must request a new item number, or have the drawing updated. An update will affect future orders;
- Orders for repetitive customized products, without any change to the specification, are processed without customer drawing approval.

Delivery

Unless otherwise agreed between the customer and nVent HOFFMAN, the delivery is made "Ex Works", which according to Incoterms means "from the premises of the Supplier".

Some comments on Incoterms:

- The Supplier is free to decide on the means of transport;
- The goods will be considered delivered as soon as the Purchaser confirms receipt of the goods, or as soon as the Supplier has informed the Customer that the goods are available;
- The risk of the goods will be fully at the expense of the Customer upon delivery;
- Delivery times provided are approximate, unless otherwise agreed in the order confirmation, and shall commence as soon as the Supplier has confirmed the order in writing and the customer has approved the drawings for customized products.



Our powerful portfolio of brands:

CADDY

ERICO

HOFFMAN

RAYCHEM

SCHROFF

TRACER



eldon.com
HOFFMAN.nVent.com