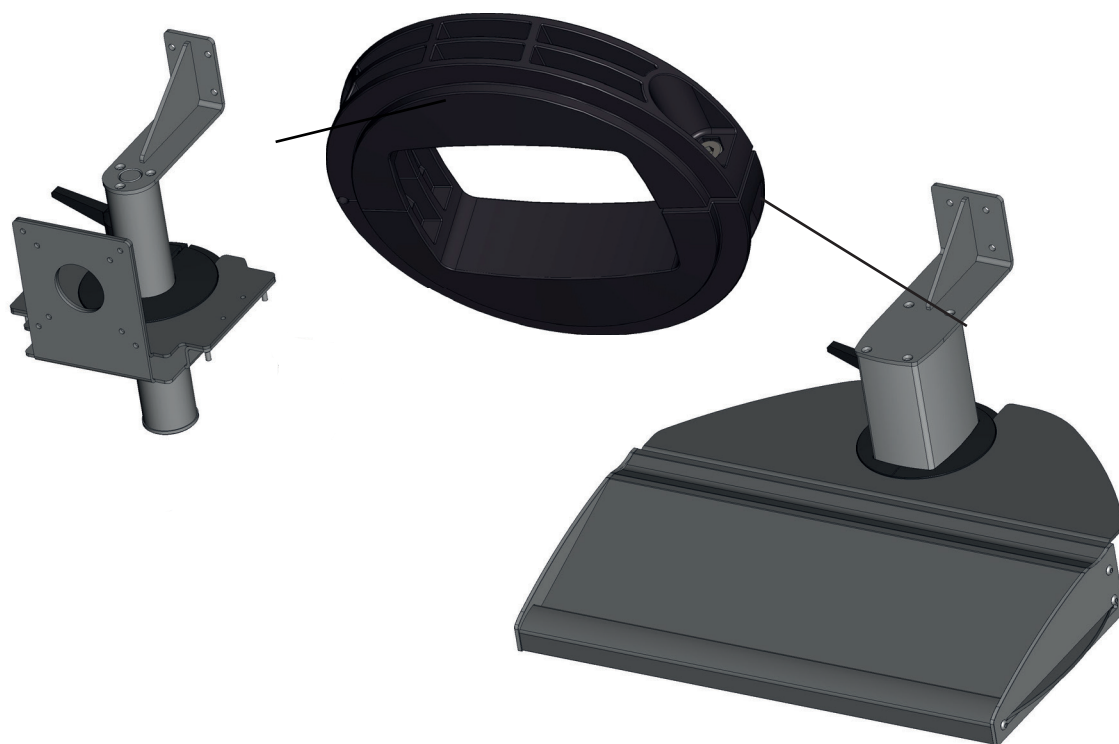


Installation and Operating Instructions

ERGO.SLIDE

Type

ERGO.SLIDE


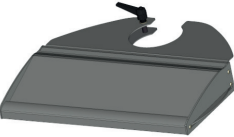


Important: the operating and installation instructions must be read before assembling and using the product.
The instructions must be kept for reference purposes over the product's whole lifetime.

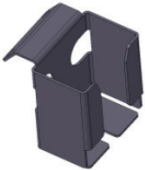

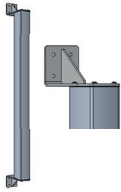

Directory

Directory	2
Allocation of products	3
Accessories	3
Indication and Use of the instructions	4
1. Safety instructions	4
1.1 Intended use	4
1.2 Applicable operating conditions	4
1.3 Installation, operation and maintenance	4
1.4 Sealing system	5
1.5 Protective measures	5
2. Users / target group / end users	5
3. Mechanical Data	5
4. Static load	6
5. Normal assembly sequence (detailed description on the following pages)	6
6. ERGO.SLIDE assembly	6
7. Mounting Keyboard Tray	7
7.1 Removing the keyboard shelf	7
7.2 Mounting the plates on the ERGO.SLIDE	8
8. Mounting VESA holder	11
9. Mounting Clamping, prevents rotation (swivel)	12
9.1 Clamping by clamping lever	12
9.2 Clamping by countersunk screw	12
9.3 Alternative fixing of the keyboard shelf (after that the shelf can no longer be swivelled!)	13
10. Mounting accessories	13
10.1 Mousegarage	13
10.2 Extended clamping screw	14
10.3 Rubber grommet for Imbus	14
10.4 Wall mounting bracket	15
10.5 End Cover	16
10.6 Mounting the end caps	17
11. List of potential errors	18
12. Disposal	18

Allocation of products

Component	Designation	Dimensions in (LxWxH) mm	Weight kg /
	ERGO.SLIDE1	Ø 144 x 32	0,235
	Keyboard tray	516 x 394 x 68,5	8,228
	VESA holder rigid	205 x 168 x 154	1,690

Accessories

Component	Designation	Dimensions in (LxWxH) mm	Weight kg
	Mousegarage for keyboard tray	88 x 74 x 80	0,3
	Extended clamping screw	Ø25 x 260	0,478
	Wall mounting bracket set	171 x 72 x 1150	6,280
	End cap	95,5 x 72 x 1007,7	5,111

Indication and Use of the instructions

The sequence of the chapters is not necessarily the operation or assembly sequence.
Not all chapters apply for each component.

Use:

- The use of the ERGO.SLIDE in combination with a storage or holding system is recommended for the nVent-Hoffman SYSPEND 281-MAX support systems.
- The ERGO.SLIDE allows easy height adjustment of individual system components.

1. Safety instructions

1.1 Intended use



Attention

- Refer to the diagram on p.6 for the maximum loads
- Refer to the respective valid techn. datasheets for other suspension system specifications.
- Incorrect or impermissible use and non-compliance with the notes in these instructions will void any warranty.

1.2 Applicable operating conditions



Attention

- **Normal conditions**
 - Temperature range 0°C to +70°C
 - The shelves and holding elements are not designed to accommodate cable systems.
- **The following special conditions are not, or only permitted after special consultation:**
 - Extraordinary mechanical loading
 - Ionising effects
 - Excessive vibration
 - Radiation
- **The following conditions must be observed during transportation and storage:**
 - Storage temperature 0°C to +70°C!

1.3 Installation, operation and maintenance



Attention

- Improper installation and operation of the ERGO.SLIDE will void the warranted characteristics and the guarantee.
- The relevant standards, national regulations and laws for equipment as well as the generally recognized standards of technology are binding for installation and operation.
- For the installation of power line systems, it must be ensured that the power supply is disconnected and suitable protective measures must be taken.
This applies both during the installation, during operation and also when carrying out repair and maintenance work.
- Attention: Electric shocks can cause serious health problems, which may lead to death.
- Only original nVent Hoffman parts may be used for replacement and repair.
- Improper and impermissible modifications to the ERGO.SLIDE, which are outside the intended use and which do not comply with the specified conditions, can lead to the loss of the warranted properties and the guarantee.
- Appropriate and permissible modifications may only be carried out by experienced and trained electricians and appropriately instructed persons.

1.4 Sealing system



Attention

- Any seals provided must remain in their intended position during operation.
- Components and seals must not be damaged, otherwise compliance with the tested technical properties is not possible.
- The operating company is responsible for the proper sealing of the product to ensure the appropriate degree of protection. Compliance with the tightening torques is mandatory.

1.5 Protective measures

- ▶ Possible sharp edges
- ▶ The excessive crushing, stretching and bending of power lines has to be avoided.



Attention

- ▶ The power line system has to be checked for abrasion points regularly.
- ▶ Mounting or the electrical connection of the power line system must be carried out by a qualified electrician.
- ▶ Do not damage seals during installation as otherwise the technical characteristics cannot be complied with.
- ▶ It must be ensured that possible outgoing cables are not overstretched or scoured.
CAUTION Danger of electric shock !
- ▶ The tightening torques of the screw connections should be inspected on a regular basis.

2. Users / target group / end users

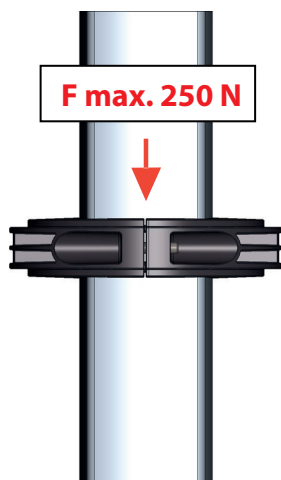
- Experienced, trained electricians and appropriately instructed persons
- Experienced, trained fitters and appropriately instructed persons

3. Mechanical Data

Material	
Components	Powder-coated steel; optionally stainless steel
Wall mounting bracket	Aluminium
Tube	Aluminium / Steel
Gasket	PUR
Plastics	PA 6 GF
Protection class	No

4. Static load

System load

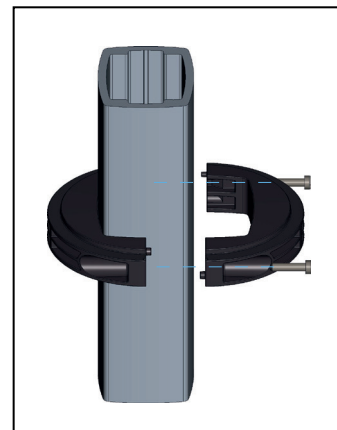
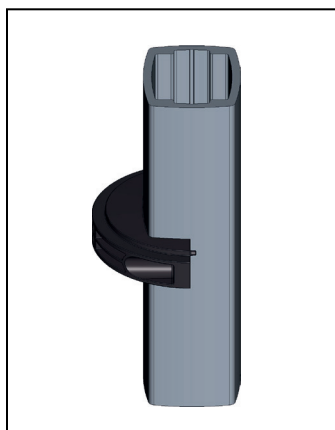
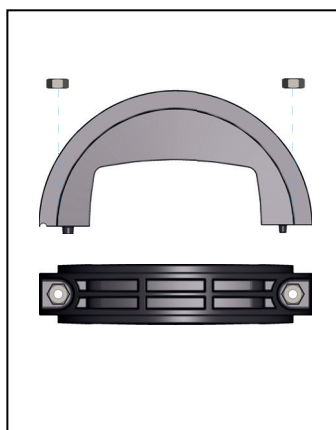


Installation and adjustment

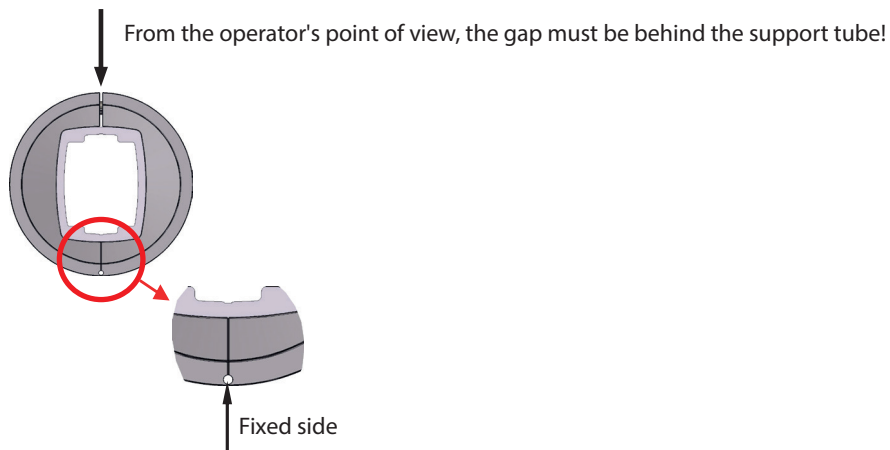
5. Normal assembly sequence (detailed description on the following pages)

1. Mount the ERGO.SLIDE on the appropriate support tube (SYSPEND 281-MAX)
2. Slide the storage or holding system over the ERGO.SLIDE and mount

6. ERGO.SLIDE assembly



- Insert nuts (2xM5) into the first half of the ERGO.SLIDE
- Place the first half of the ERGO.SILDE on the support tube
- Put the second half of the ERGO.SLIDE together with the first half of the ERGO.SLIDE and screw together



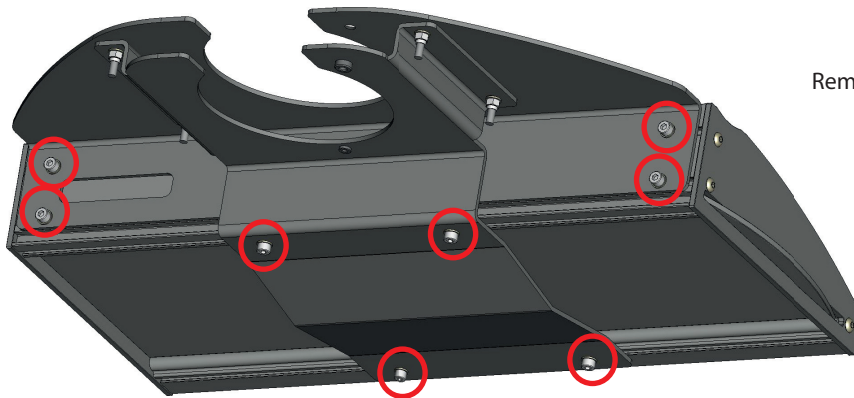
- Tighten the front screw connection (fixed side) with 5.5Nm.
- Unfasten the rear screw connection for moving the ERGO.SLIDE in vertical direction and tighten the rear screw connection with max. 5.5 Nm when the desired position is reached.

7. Mounting Keyboard Tray

S2MESAK

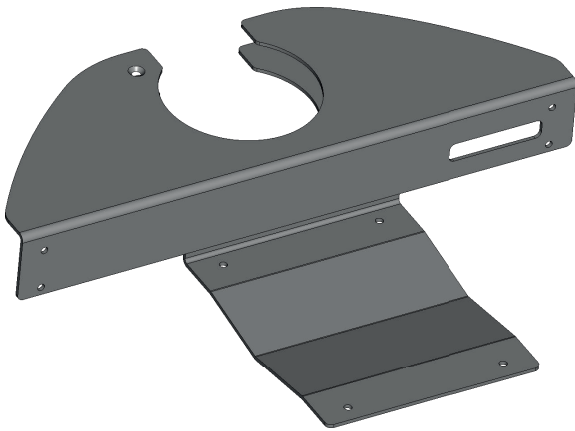
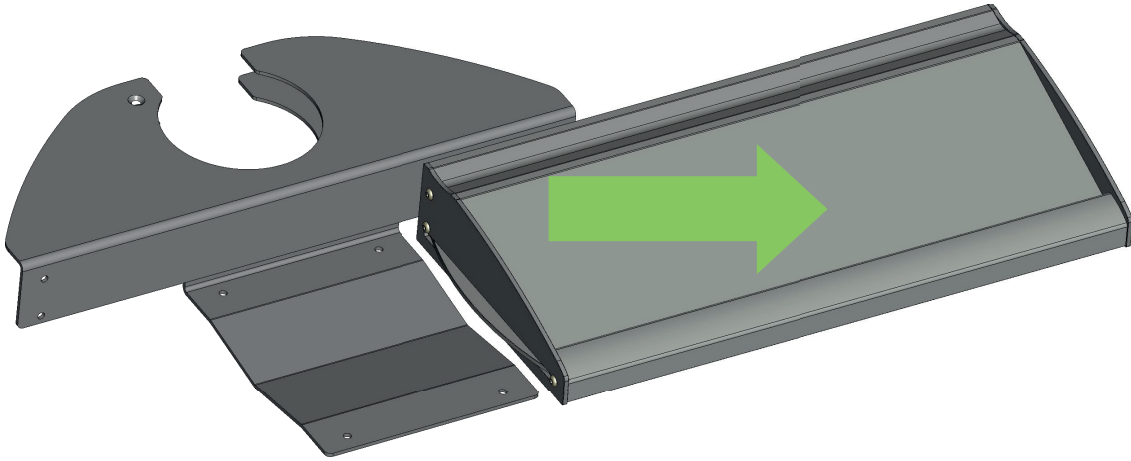
7.1 Removing the keyboard shelf

1.



Remove 8x screw and washer

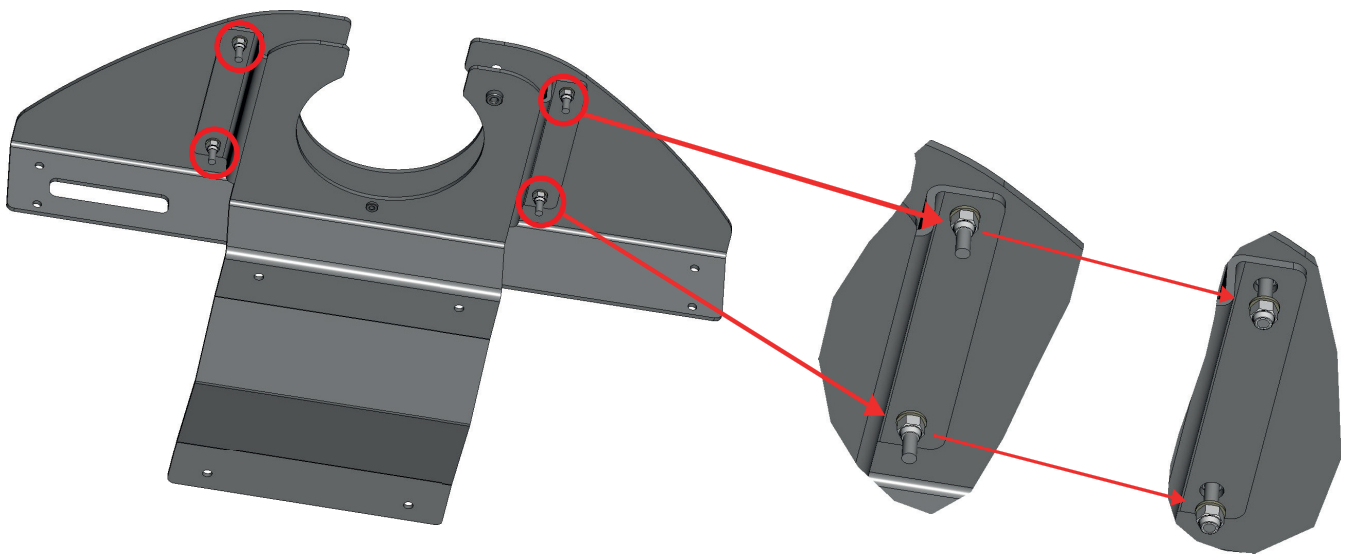
2.



Putting the keyboard shelf aside

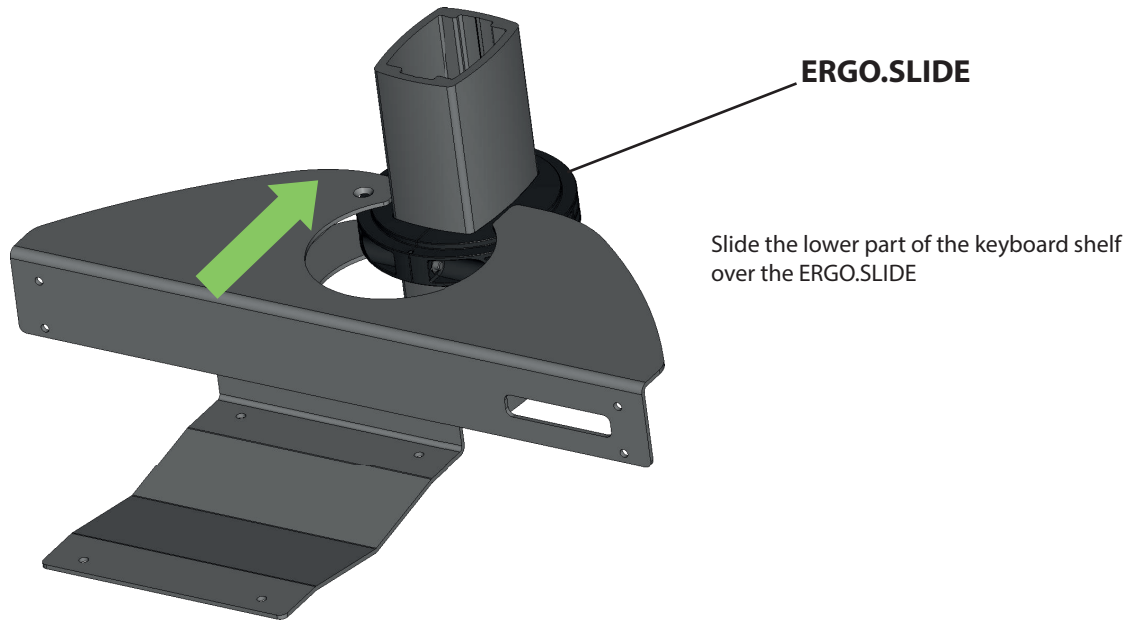
7.2 Mounting the plates on the ERGO.SLIDE

1.



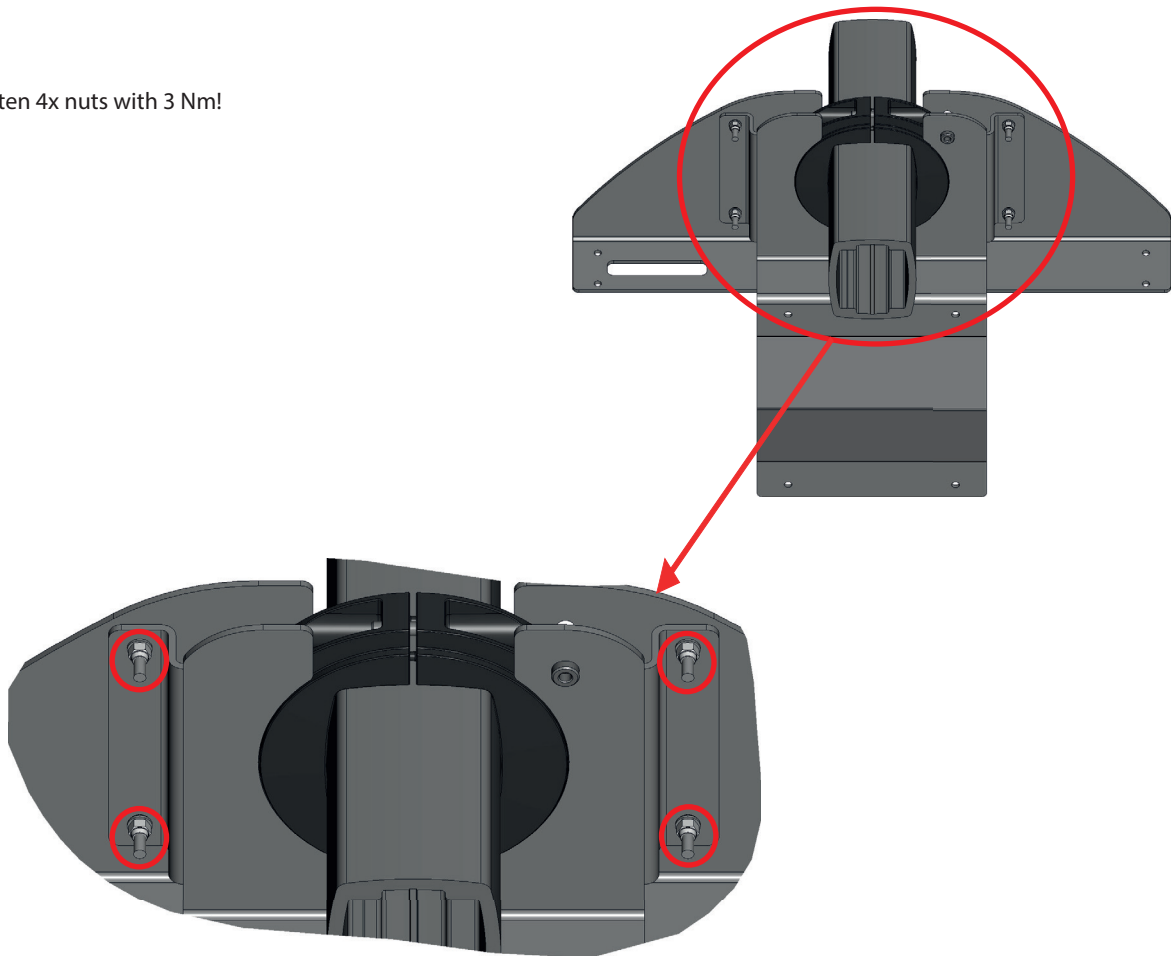
Unfasten 4x nuts so far; that the sheets can be pushed over the ERGO.SLIDE.
Do not remove nuts completely!!! /

2.



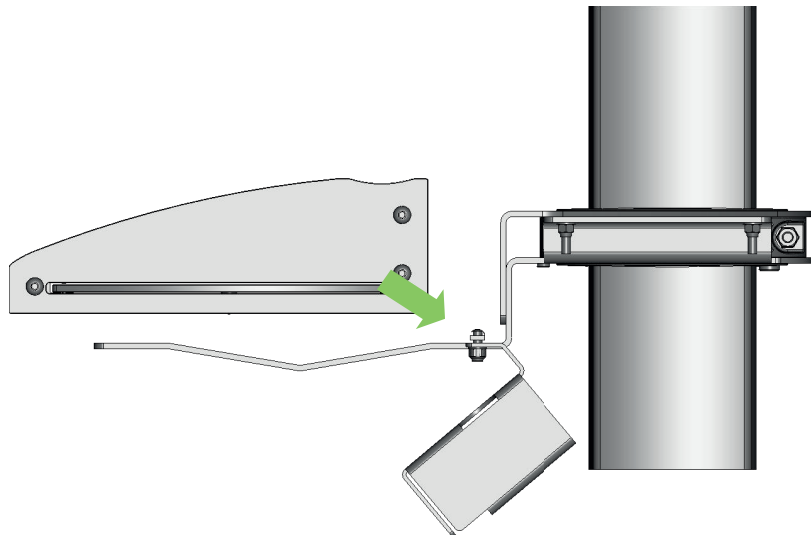
3.

Tighten 4x nuts with 3 Nm!



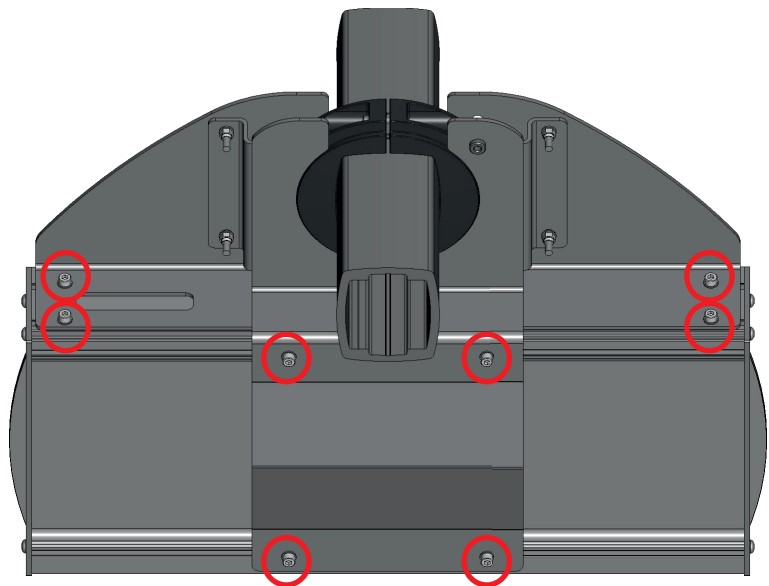
4.

Laying down the keyboard shelf



5.

Mount 8x washers and screws.
Tightening torque: 3 Nm

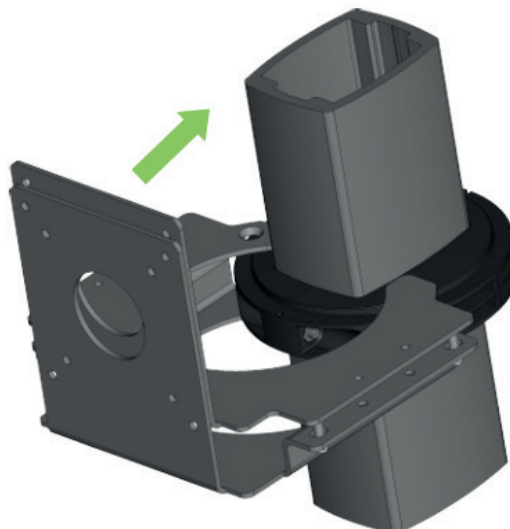


1. Unfasten 4x nuts so far; that the sheets can be pushed over the ERGO.SLIDE
Do not remove nuts completely!!!



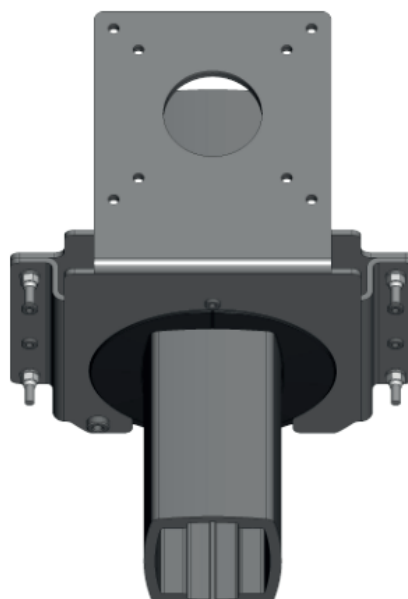
- 2.

Slide the IPC holder over the ERGO.SLIDE



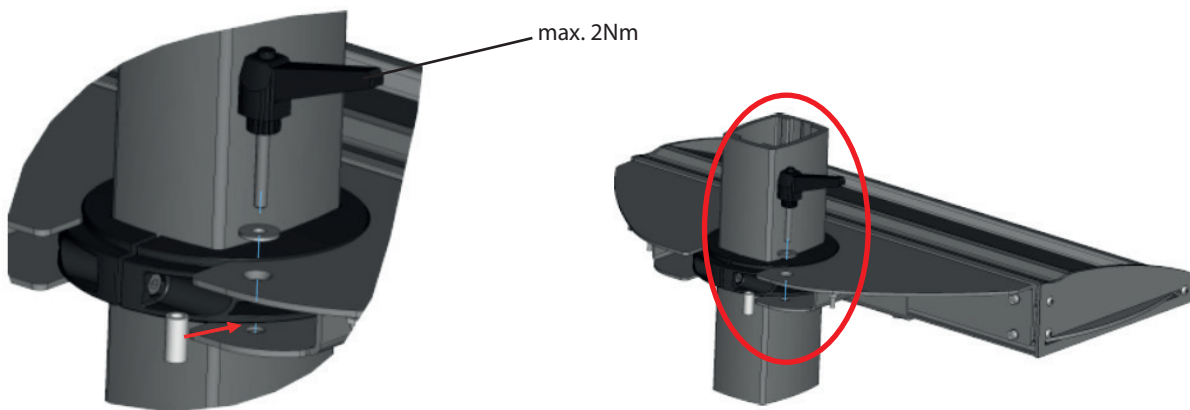
- 3.

Tighten 4x nut with 3 Nm!



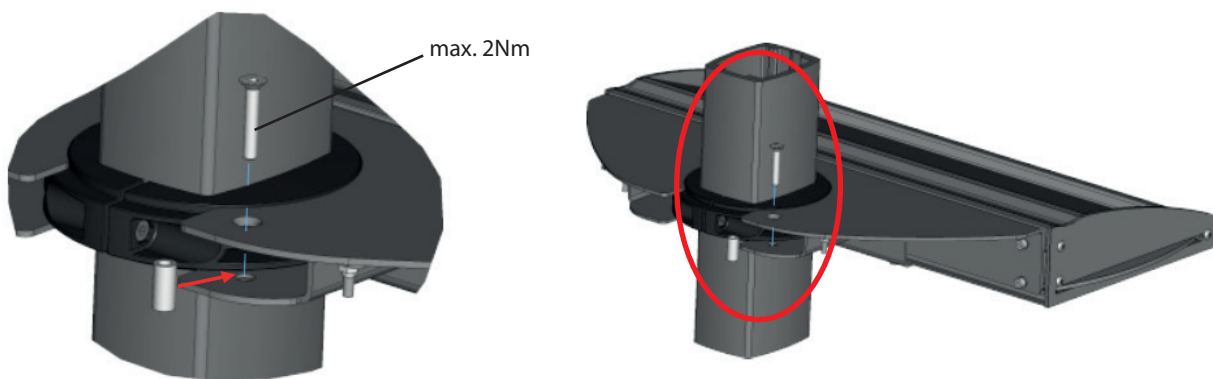
9. Mounting Clamping, prevents rotation (swivel). (Example keyboard shelf and support tube)

9.1 Clamping by clamping lever



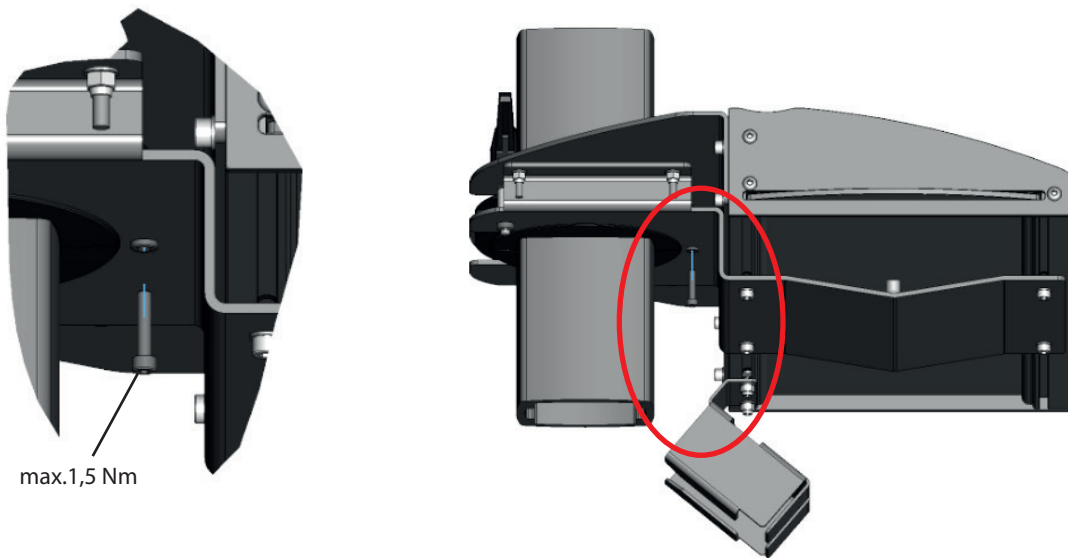
- Spacer sleeve between the sheets push
- Mount washer and clamping lever

9.2 Clamping by countersunk screw (alternative)



- Push the spacer sleeve between the sheets
- Mount the screw

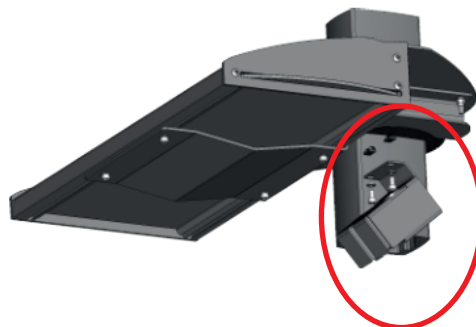
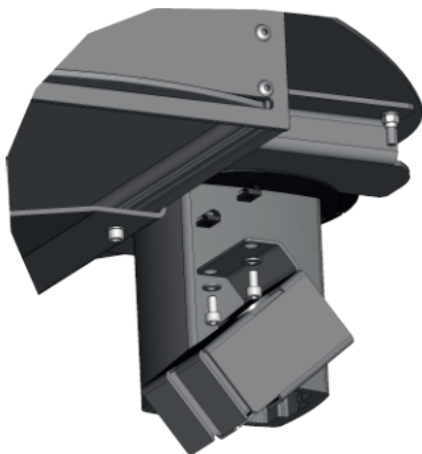
9.3 Alternative fixing of the shelves (after that the shelf can no longer be swivelled!)
 Attention, locking is only possible in the front position of the shelf!



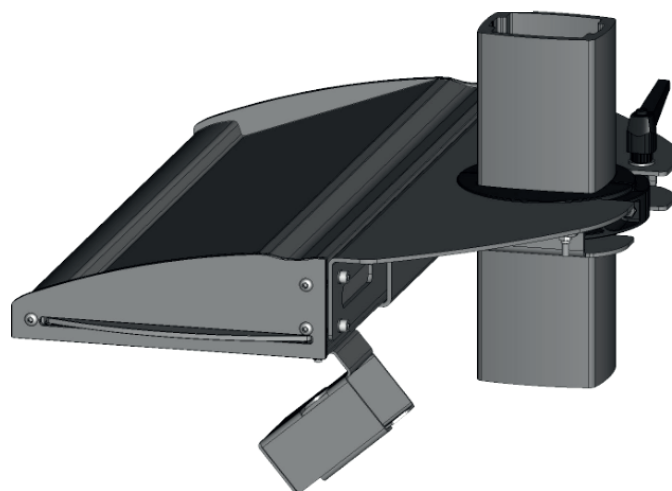
10. Mounting accessories

10.1 Mousegarage Storage

S2MESMG

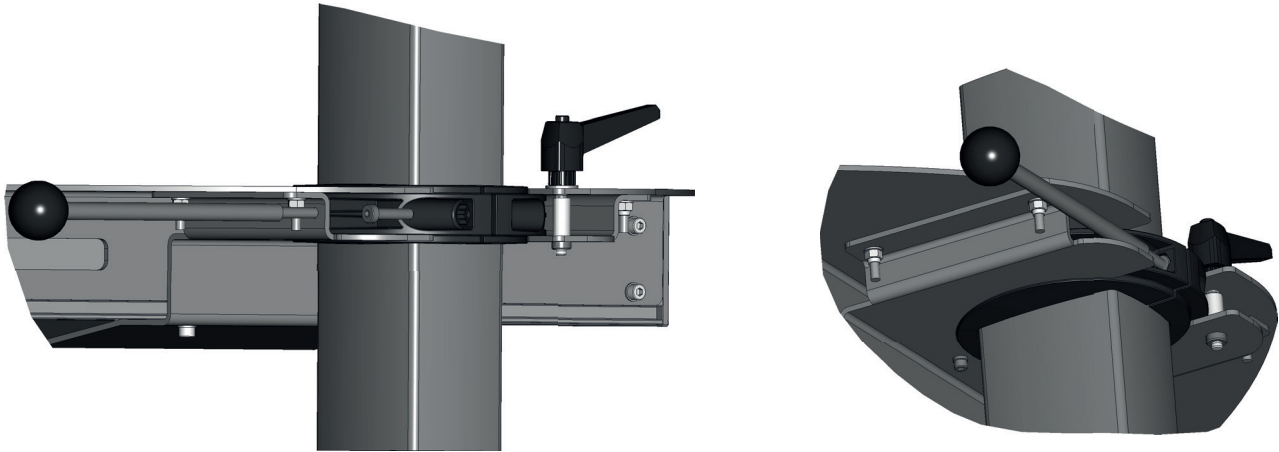


- 2 Clip the spring nuts into the groove
- The Mousegarage with the washers and screws in screw the spring nuts
- Tightening torque: 3 Nm



10.2 Extended clamping screw

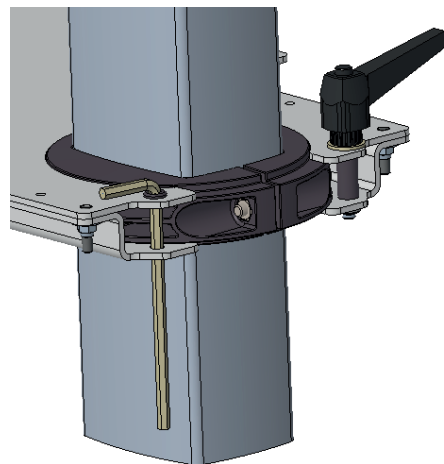
S2MESHS



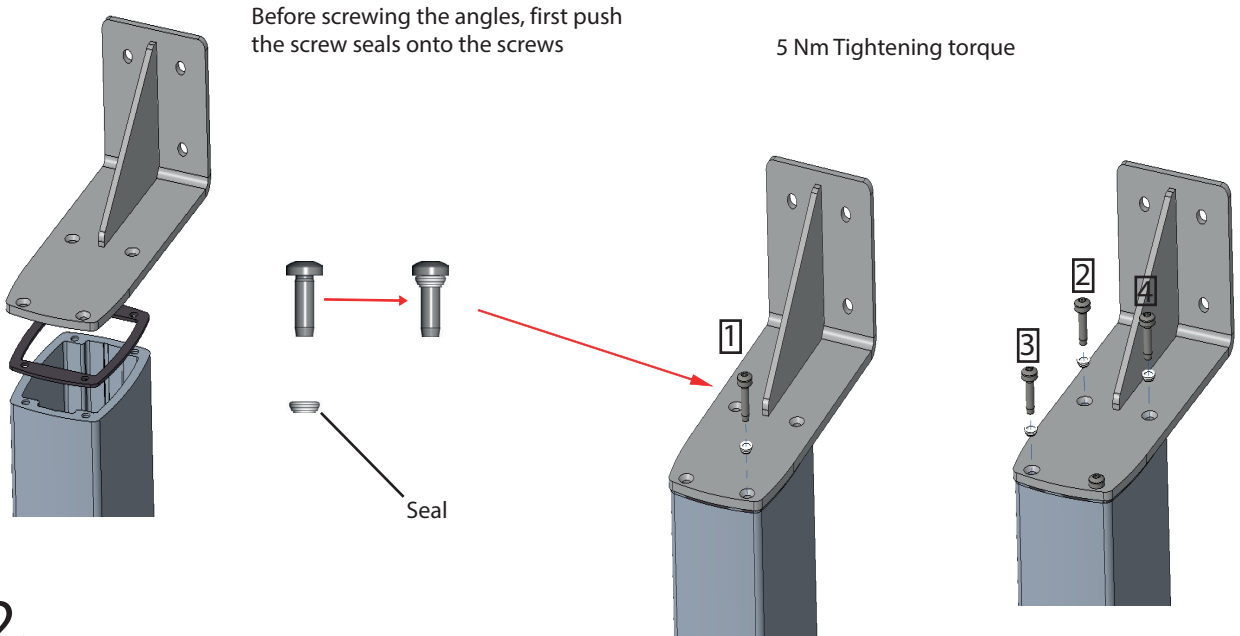
- Mount the ERGO.SLIDE as described under the respective SYSTEM, but instead of the screw on the loose side, the extended clamping screw is used.
- Please note that the extended clamping screw may only be used in conjunction with the anti-rotation device. (see 9.3)

10.3 Rubber grommet for Imbus

Usual Allen key SW 5 can be used. Allen key is not included in the scope of delivery. /



1. - Screw the bracket to the top and bottom of the support tube

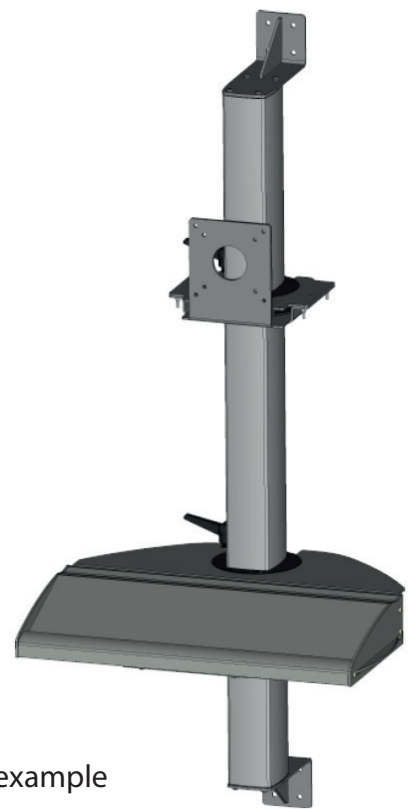


2.

- Fasten the support tube including pre-assembled brackets to a wall or to a machine wall with appropriate screws./



- Variable equipment of the support tube see page 3 (note mounting of the individual systems)



Assembly example

The ERGO.SLIDE can also be integrated into a complete support arm system.

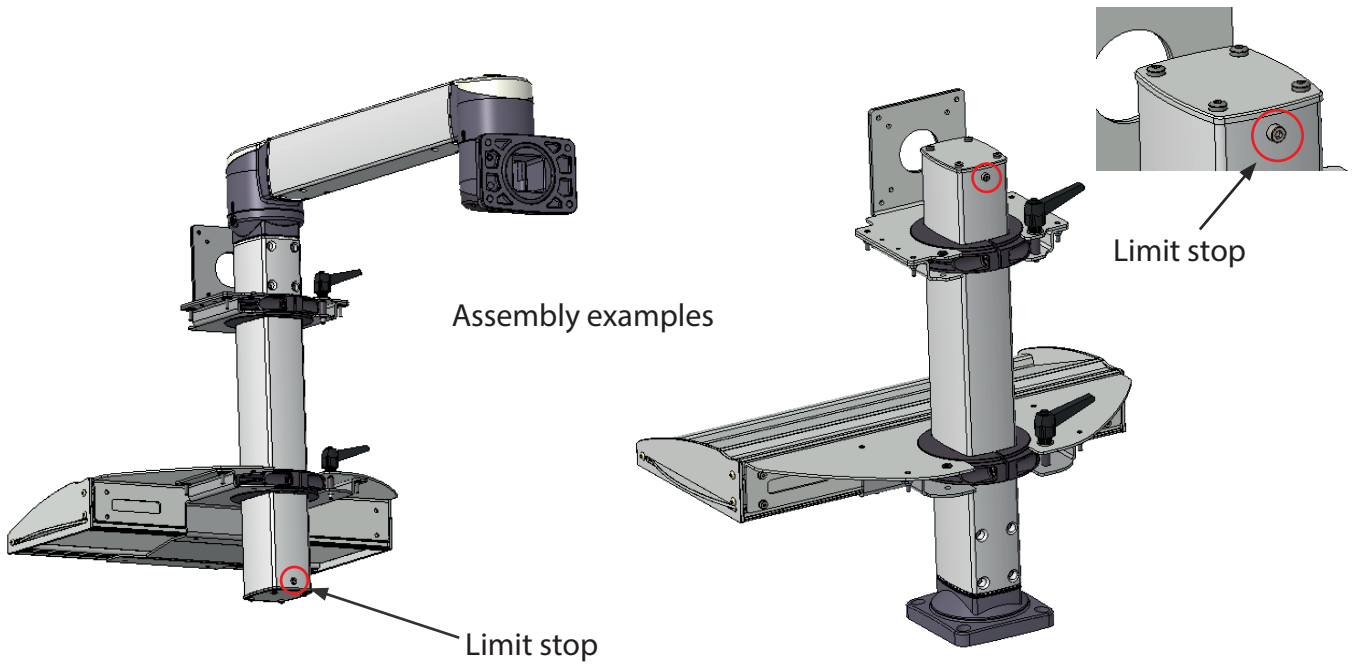
The application is possible as hanging or standing.

The open tube ends are then each covered with an end cap.

In the region of the end caps in the tube a stop (screw head) is provided to prevent the ERGO.SLIDE slips over the end caps. Another stop in the area of the support arm system component (e.g. base, rotary elbow) is possible on a customer-specific base.

The installation of the respective caps is described in more detail in the following points.

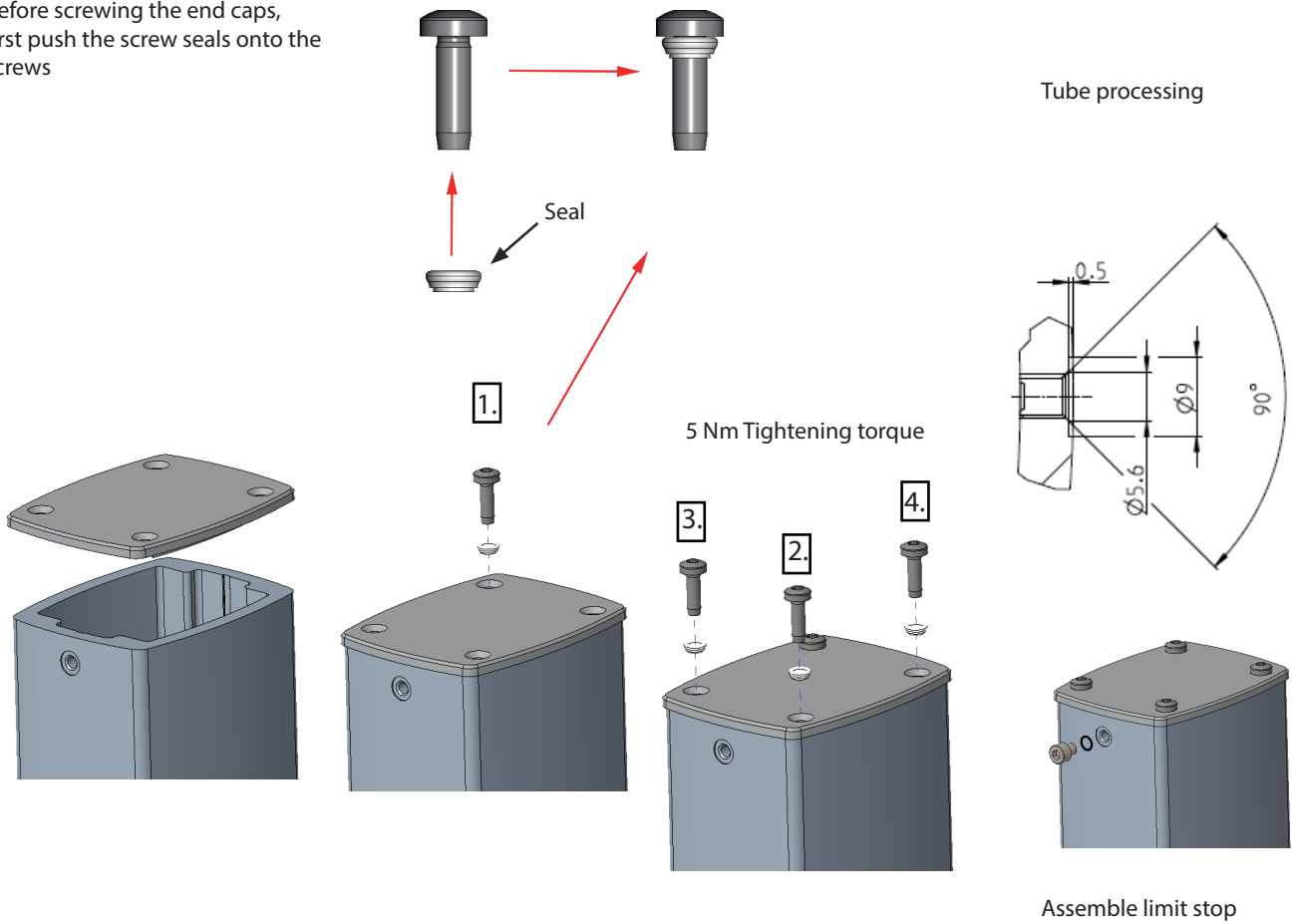
Example SYSPEND 281-MAX system with ERGO.SLIDE in combination with a keyboard tray and ERGO.SLIDE in combination with an IPC holder.



10.6 Mounting the end caps

- Screw end cap to end of support tube
 1. Place the end cap on the support tube
 2. First screw in one screw completely (use oil for lubrication)
 3. Next, screw in the diagonally opposite screw with seal.
 4. Finally, screw in the other two screws completely (use oil for lubrication)
- For variable equipment of the support tube, see page 3 (note mounting of the individual systems)

Before screwing the end caps, first push the screw seals onto the screws



11. List of potential errors

Problem	Maßnahme / Measure / Mesure
Ergo.Slide jams during height adjustment	When adjusting with the second hand, loosen or compensate the tilt
Ergo.Slide slides down	Retighten the clamping
Torn off welding studs	Observe specified tightening torques
Handle screw is bent	Fix the holding element so that no more swivelling is possible (see 9.3) and then replace the handle screw
There is no height limit	Screw in the screw provided for the stop
ERGO.SLIDE component slides over the end of the support tube.	End stop screw not installed when using end caps. screw in the screw. If there is no thread for the screw, retrofit this, see points 10.5.

12. Disposal

This product complies with the international directives on the restriction and/or use of certain hazardous substances in electrical and electronic equipment (RoHs). Check with your local waste disposal service to find out how this product can be properly recycled or disposed of.

The German version is the original operating and installation instructions.
For other languages, the original operating and installation instructions has been translated.