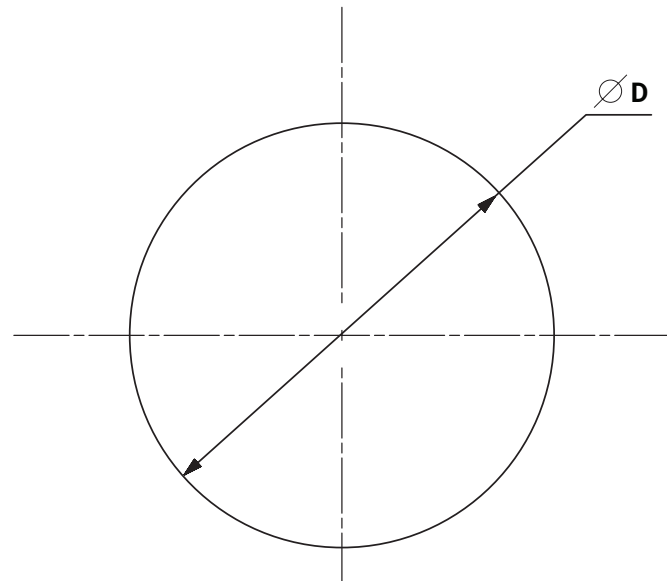




Cable Entry Systems  
Cable Entry Gland Plate Round Modular, CCFR

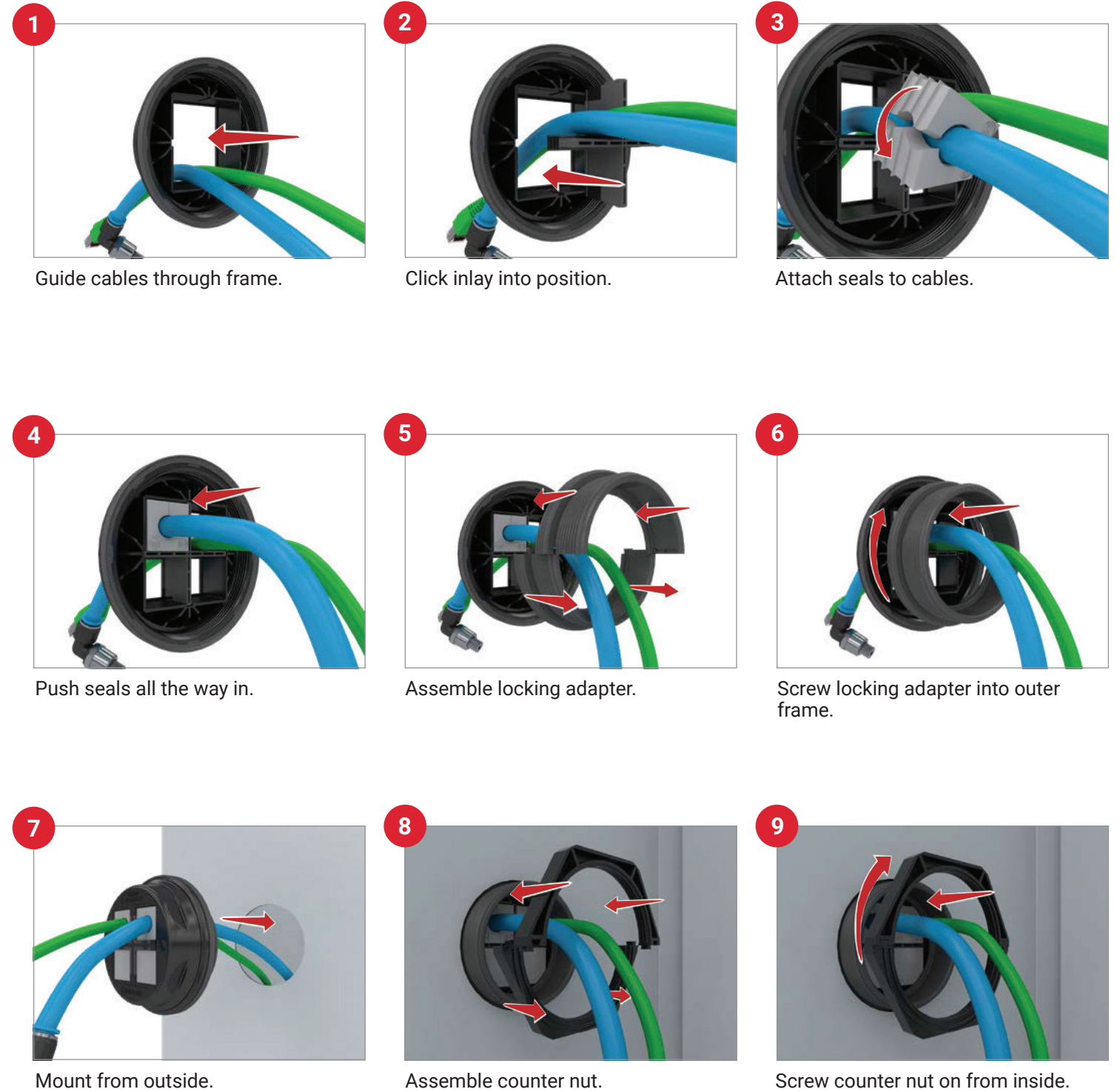


Cutout Dimensions

Catalog Number (Kit)	Frame Only	Locking Adapter Only	Counter Nut Only	Cutout D	Torque
CCFR20	CCFR2032	CCFRM20A	CCFRM20NUT	20.3mm (.80)	3 Nm (26 in-lb)
CCFR25	CCFR2032	CCFRM25A	CCFRM25NUT	25.3mm (1.0)	3 Nm (26 in-lb)
CCFR32	CCFR2032	CCFRM32A	CCFRM32NUT	32.3mm (1.27)	3 Nm (26 in-lb)
CCFR40	CCFR4063	CCFRM40A	CCFRM40NUT	40.4mm (1.59)	7 Nm (62 in-lb)
CCFR50	CCFR4063	CCFRM50A	CCFRM50NUT	50.4mm (1.98)	7 Nm (62 in-lb)
CCFR63	CCFR4063	CCFRM63A	CCFRM63NUT	63.4mm (2.50)	7 Nm (62 in-lb)

Combination Options

Catalog Number (Kit)	DIVIDER		
	1	2	4
CCFR20	—	—	—
CCFR25	—	—	—
CCFR32	—	—	—
CCFR40	CCFD1	CCFD2	CCFD4
CCFR50	CCFD1	CCFD2	CCFD4
CCFR63	CCFD1	CCFD2	CCFD4



According to UL Standard 508A, the following Conditions of Acceptability apply:

- Use M5 screws of stainless steel (AISI type 304 or 316)
- Max. end-use temperature for UL application is 50° C (52° F)
- Max. temperature range: -40° C to 120° C (-40° to 248° F) static