

Taper-Threaded Rebar Splicing Systems



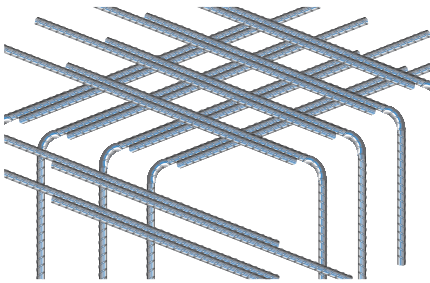
European Central Bank, Frankfurt

Lap Splicing Disadvantages

Lap splicing has few advantages and many disadvantages when compared to mechanical splicing.

IS LAP SPLICING RELIABLE?

- Lap Splices develop their strength from interaction with concrete
- Lap splices cause non-ductile failure under severe loading and have poor cyclic performance

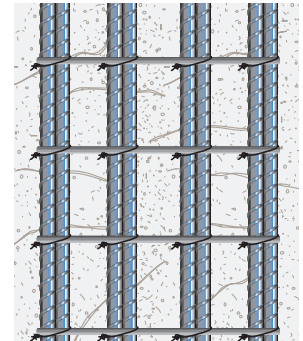


DESIGN CONSTRUCTIVE

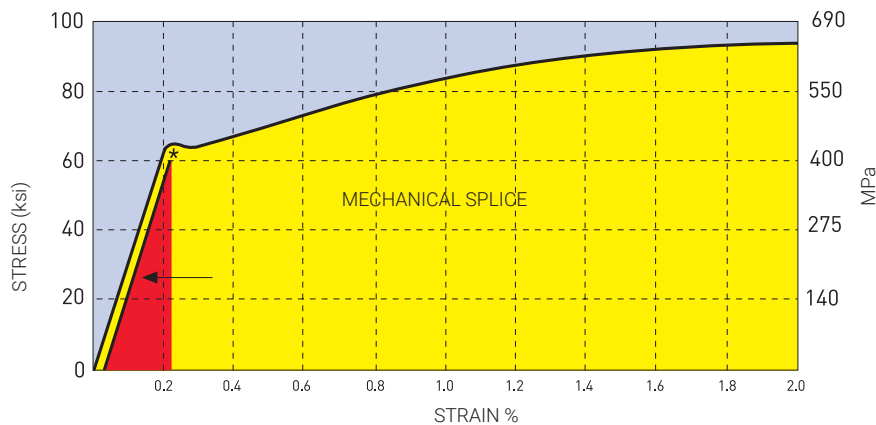
- Lap length required for bars in tension is normally longer than same size bars in compression
- Lap splices double the number of bars leading to rebar congestion which can restrict the flow of aggregates
- To prevent concrete splitting, additional rebar may be required for confinement

HIDDEN COSTS

- The larger the bar diameter, the longer the lap
- The lower the concrete strength and the higher the yield stress, the longer and greater lap length required
- Corrosion-resistant coated bars are expensive and longer length may be required
- Lap splicing involves time consuming calculations which may lead to errors or overestimating



LACK OF STRUCTURAL INTEGRITY



- When designing with lap splices, design strengths and strains must be less than the yield point of the bar (red zone)
- Improperly designed lap splices can lead to premature building failure
- Once rebar is stretched beyond its elastic limit*, both the lap splice and concrete become compromised, putting occupants at risk

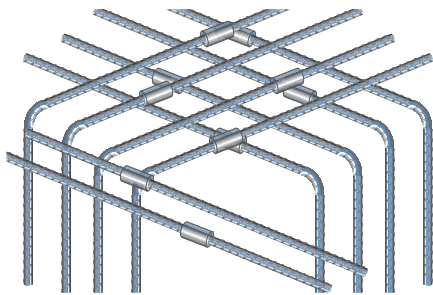
*Point of elastic limit is denoted in graph

Mechanical Splicing Advantages

nVent LENTON Mechanical Splicing provides a positive locking connection and structural integrity in reinforced concrete construction. It also develops higher tensile strength and strain capacity than lap splicing while providing for full load transfer with some of the slimmest and shortest couplers possible.

PROVEN RELIABILITY

- Performs similar to a continuous piece of rebar
- Splice strength is developed independent of concrete quality
- Provides ductility independent of concrete condition
- Achieves greater strength and ductility, especially during man-made, seismic or natural events
- Superior inelastic and elastic cyclic performance

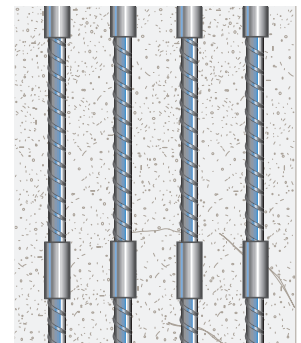


DESIGN FRIENDLY

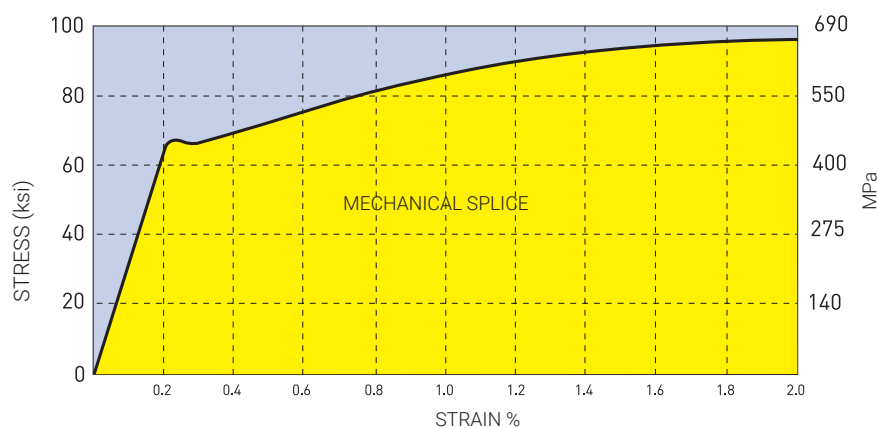
- Reduces rebar congestion and improves concrete consolidation
- Allows greater flexibility in design options
- Improves steel-to-concrete ratio

ECONOMICAL BENEFITS

- Requires no special skills and reduces labor costs
- Accelerates construction schedules for reduced cost and improved efficiency
- Suitable for prefabrication of reinforcement, saving valuable crane time
- Reduces material costs with less rebar usage



INCREASED STRUCTURAL INTEGRITY



- When designing with mechanical splices, contractors can take advantage of the full range of load path (yellow zone)
- Eliminates lap splices in high-stress regions and reduces congestion
- When designing beyond the elastic limit, mechanical splices reduce potential of building collapse and increases safety of occupants

nVent LENTON Trusted Experts for Reinforcing Steel Connections

UNIQUE TAPER-THREADED DESIGN

The self-aligning, taper-threaded design brought to you by nVent LENTON provides ease of installation, consistent performance and durability. It also develops higher tensile strength than lap splicing and provides full load transfer with the slimmest and shortest coupler possible.

ECONOMY OF DESIGN

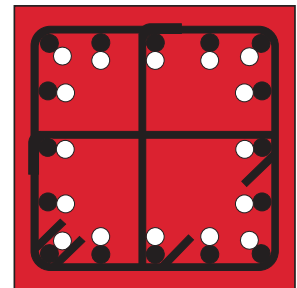
Mechanical splices cut the amount of necessary bars in the "lap zone" in half. With nVent LENTON Mechanical Splices, you can design smaller columns and maximize floor space while reducing cost.

DESIGN BENEFITS

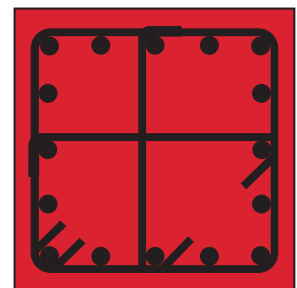
- Allows maximum bar cross-section to be used
- Smaller diameter reduces the need for concrete cover and eliminates rebar congestion
- Short length and slim design ensures the least disturbance in uniform stiffness
- Splice length is independent of rebar deformation
- Unique tapered thread requires no lock nuts and provides positive locking with a no-slip connection
- Any length, shape, diameter or combination of bar sizes can be mechanically spliced

INSTALLATION BENEFITS

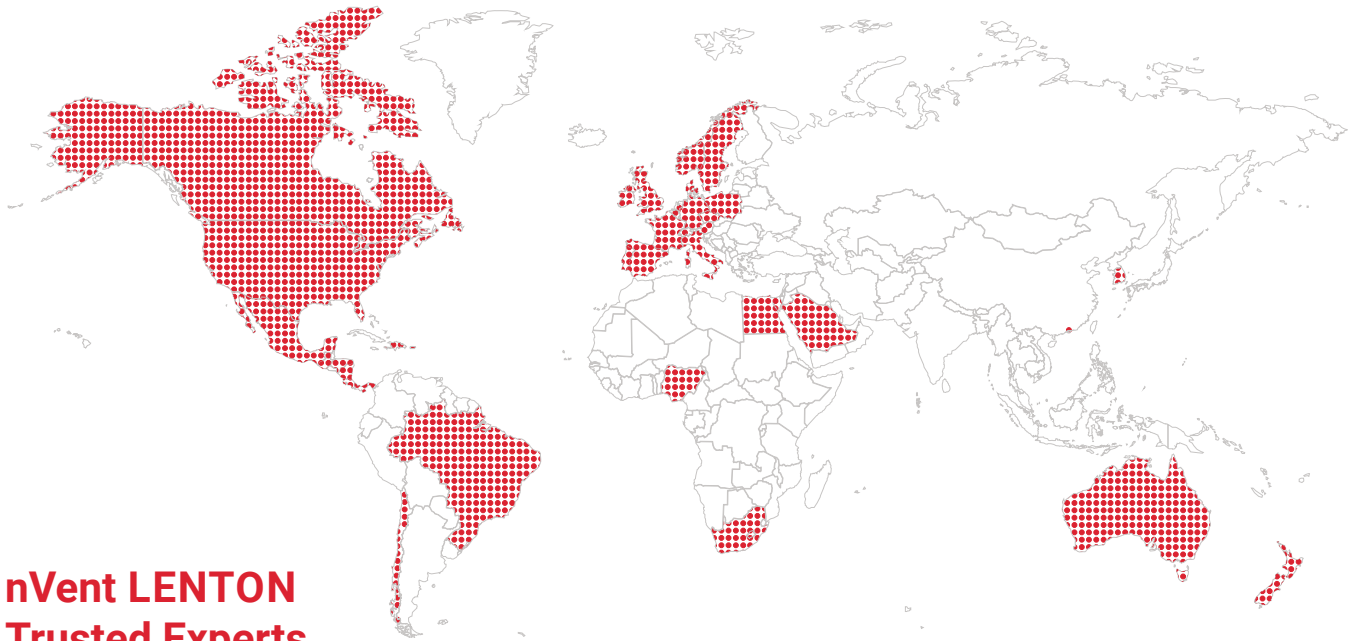
- Fastest system to install:
 - No special tools or skills required
 - No power required for installation
 - Splice inspection is quick and easy
 - Reduces crane time
- Takes approximately 4.5 turns to engage
- Prevents cross-threading
- Bar threader is easy-to-use and can be set up on-site or at the fabricator
- Allows for prefabrication in the shop saving time on the job site and accelerating construction schedules



Lap splice – additional rebar in the lap zone.



nVent LENTON Mechanical Splice – ideal balance of steel and concrete.



nVent LENTON Trusted Experts Across the Globe

nVent LENTON is constantly evolving product offerings to meet new regional needs. Reach out to your local nVent LENTON Sales Representative for more information.

nVent LENTON is a world-leading brand of advanced mechanical rebar splicing systems. The “Rebar Splicing Specialists” at nVent understand the concrete construction business and inherent rebar splicing problems. Our engineering capabilities, broad experience and extensive test data combined with our multiple splicing and anchorage systems, allow us to provide engineers and contractors with product solutions to rebar splicing challenges – today and into the future.

CODE REQUIREMENTS

nVent LENTON Mechanical Splice products meet or exceed International Codes and Standards and has a large number of approvals across the globe. See nVent.com/LENTON for specific listings and updated certifications and approvals.



NVENT LENTON MECHANICAL REBAR SPLICES: PROVEN AND TESTED



Rebar Splicing Specialists

Designed by nVent LENTON personnel who understand inherent rebar splicing issues.



Customer Safety

Our solutions are created with a Safety First mindset.



Meets Code Requirements

The most effective method of joining reinforcing bars and meeting the code requirements of national and international regulatory organizations.

nVent LENTON Mechanical Splices Stand the Test of Time

PROVIDES CONTINUITY IN QUALITY AND STRENGTH

nVent LENTON Taper-Threaded Couplers are manufactured from high-strength and high-quality steel. All manufacturing facilities are ISO 9001-2015 registered.

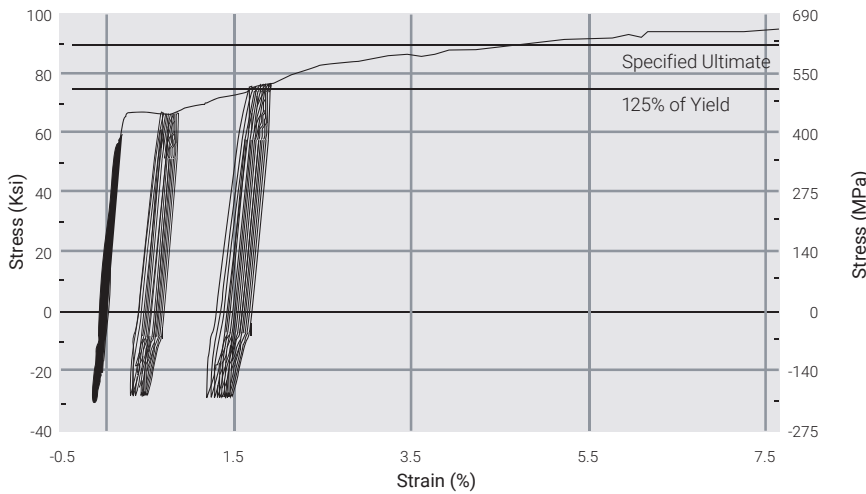
SEISMIC AND FATIGUE

nVent LENTON products are designed for both high-movement, short-duration and low-movement, long-duration strains. Our mechanical couplers can provide resilience regardless of application.

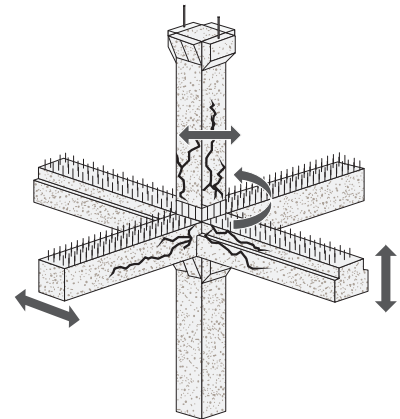
When you work with nVent LENTON Splices, you gain the ability to design and build concrete structures that meet or exceed stringent construction codes and global regulations regarding seismic frame construction.



TEST CONDUCTED TO ICC AC 133 PERFORMED ON TYPICAL U.S. REBAR



nVent LENTON provides superior performance in cyclic reversal applications.



MECHANICAL SPLICING BENEFITS THROUGH TIME



Safety and Reliability

Mechanical connections and terminators/anchors offer reliability and greater structural integrity. nVent LENTON Couplers also enhance job site safety.



Improves Efficiency

nVent LENTON Couplers help to eliminate construction delays due to rebar congestion and can accelerate construction schedules.

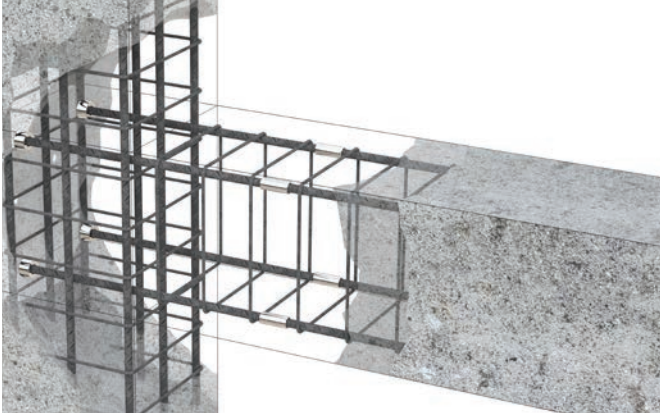


Seismic and Fatigue

nVent LENTON products are designed to provide structural integrity in the most demanding applications.

Applications

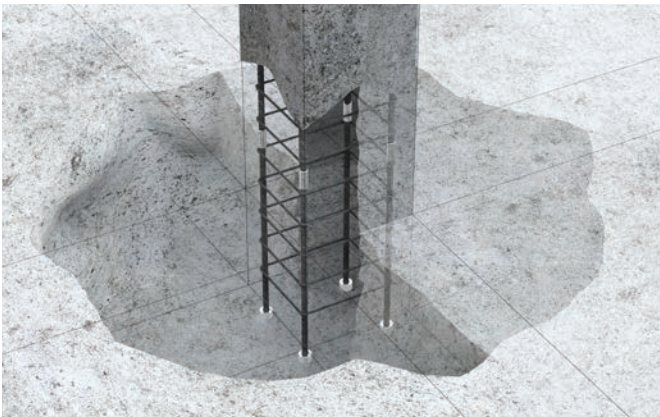
Beam/Column



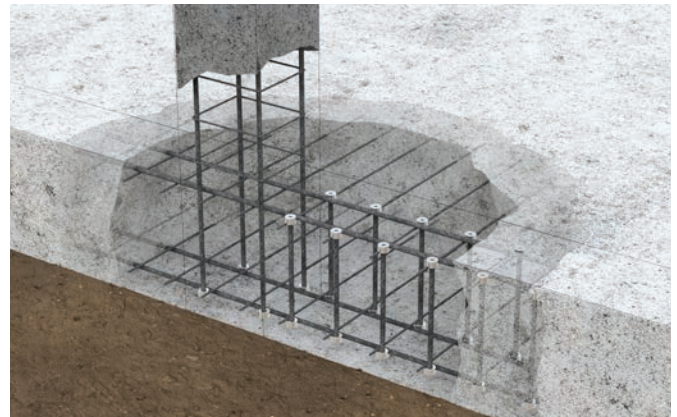
Roof/Column



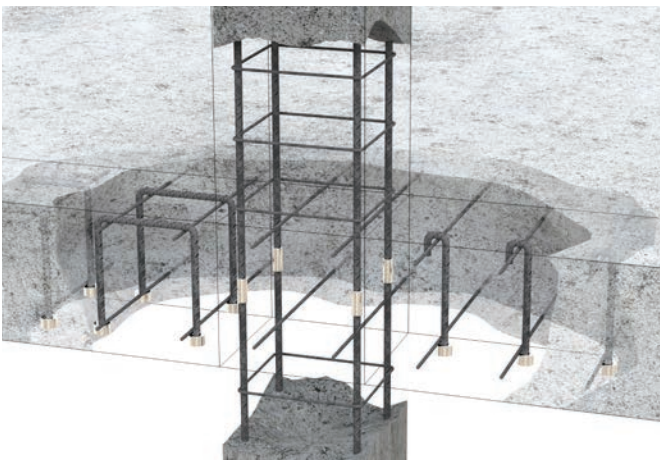
Piles/Caissons



Base Slabs/ Shear Reinforcement



Intermediate Floor Slabs



Legend



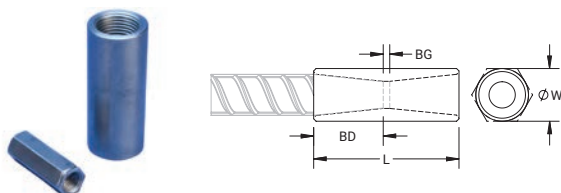
nVent LENTON Standard Couplers

nVent LENTON Standard Couplers are designed to splice the same diameter bars where one bar can be rotated and the bar is not restricted in its axial direction.

- ✓ Slim design maintains concrete cover
- ✓ Installs quickly and easily

- ✓ Product available globally; for regional product requests, contact your local nVent LENTON Sales Representative

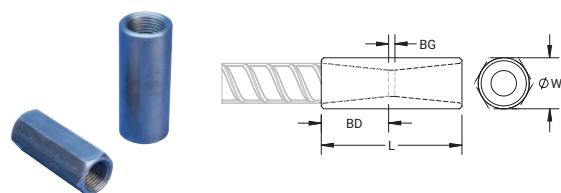
NVENT LENTON STANDARD COUPLERS - A12



- For use with ASTM A615/A706 Grades 60 and 80 Rebar

Part Number	Rebar Size, US	Rebar Size, Canada	Hex Width (W)	Diameter (Ø)	Length (L)	Bar Depth (BD)	Bar Gap (BG)	Unit Weight	Certifications
EL10A12	#3		0.69"		1.93"	0.71"	0.51"	0.2 lb	IAPMO®-UES, LA City Approval
EL12A12	#4	10M	0.69"		1.96"	0.73"	0.5"	0.1 lb	IAPMO®-UES, LA City Approval
EL14A12			0.88"		2.19"	0.84"	0.51"	0.3 lb	IAPMO®-UES, LA City Approval
EL16A12	#5	15M	0.88"		2.41"	0.96"	0.49"	0.3 lb	IAPMO®-UES, LA City Approval
EL18A12			1.06"		2.81"	1.16"	0.49"	0.5 lb	IAPMO®-UES, LA City Approval
EL20A12	#6	20M	1.06"		3.41"	1.37"	0.67"	0.6 lb	IAPMO®-UES, LA City Approval
EL22A12	#7		1.19"		3.6"	1.46"	0.68"	0.8 lb	IAPMO®-UES, LA City Approval
EL25A12	#8	25M		1.38"	3.8"	1.57"	0.66"	1 lb	IAPMO®-UES, LA City Approval
EL28A12	#9	30M		1.5"	3.97"	1.65"	0.67"	1.1 lb	IAPMO®-UES, LA City Approval
EL32A12	#10			1.75"	4.23"	1.78"	0.67"	1.7 lb	IAPMO®-UES, LA City Approval
EL36A12	#11	35M		1.88"	4.76"	2.04"	0.68"	2 lb	IAPMO®-UES, LA City Approval
EL40A12				2.13"	5.17"	2.25"	0.67"	2.9 lb	IAPMO®-UES, LA City Approval
EL43TA12	#14	45M		2.25"	6.22"	2.6"	1.02"	3.8 lb	IAPMO®-UES, LA City Approval
EL50TA12				2.75"	6.54"	2.76"	1.02"	6.4 lb	IAPMO®-UES, LA City Approval
EL57TA12	#18	55M		3"	7.57"	3.28"	1.01"	8.3 lb	IAPMO®-UES, LA City Approval

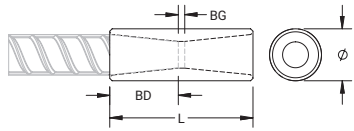
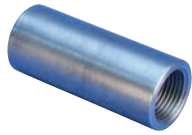
NVENT LENTON STANDARD COUPLERS - A2



- For use with ASTM A615/A706 Grades 60 and 80 Rebar

Part Number	Rebar Size, US	Rebar Size, Canada	Hex Width (W)	Diameter (Ø)	Length (L)	Bar Depth (BD)	Bar Gap (BG)	Unit Weight	Certifications
EL12A2	#4	10M	0.69"		1.63"	0.58"	0.47"	0.1 lb	IAPMO®-UES, LA City Approval
EL16A2	#5	15M	0.88"		2.19"	0.86"	0.47"	0.3 lb	IAPMO®-UES, LA City Approval
EL20A2	#6	20M	1.06"		2.81"	1.09"	0.63"	0.5 lb	IAPMO®-UES, LA City Approval
EL22A2	#7		1.19"		3.16"	1.26"	0.64"	0.7 lb	IAPMO®-UES, LA City Approval
EL25A2	#8	25M		1.38"	3.34"	1.36"	0.62"	0.9 lb	IAPMO®-UES, LA City Approval
EL28A2	#9	30M		1.5"	3.59"	1.49"	0.61"	1 lb	IAPMO®-UES, LA City Approval
EL32A2	#10			1.75"	3.78"	1.58"	0.62"	1.5 lb	IAPMO®-UES, LA City Approval
EL36A2	#11	35M		1.88"	3.97"	1.68"	0.61"	1.8 lb	IAPMO®-UES, LA City Approval
EL38A2	#12			2"	4.13"	1.75"	0.63"	2.1 lb	IAPMO®-UES, LA City Approval
EL40A2				2.25"	5"	2.17"	0.66"	3.4 lb	IAPMO®-UES, LA City Approval
EL43TA2	#14	45M		2.25"	5.25"	2.2"	0.85"	3.4 lb	IAPMO®-UES, LA City Approval
EL50TA2				2.75"	6.41"	2.78"	0.85"	6.2 lb	IAPMO®-UES, LA City Approval
EL57TA2	#18	55M		3"	6.47"	2.81"	0.85"	7.3 lb	IAPMO®-UES, LA City Approval

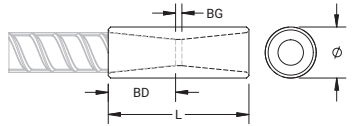
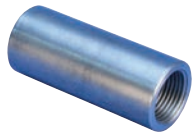
NVENT LENTON STANDARD COUPLERS - A22



- For use with ASTM A615/A706 Grades 60, 80 and 100 Rebar

Part Number	Rebar Size, US	Rebar Size, Canada	Diameter (Ø)	Length (L)	Bar Depth (BD)	Bar Gap (BG)	Unit Weight
EL22A22	#7		1.25"	3.6"	1.46"	0.68"	0.8 lb
EL25A22	#8	25M	1.5"	3.8"	1.57"	0.66"	1.2 lb
EL28A22	#9	30M	1.75"	3.97"	1.65"	0.67"	1.8 lb
EL32A22	#10		1.88"	4.23"	1.78"	0.67"	2.1 lb
EL36A22	#11	35M	2.25"	4.76"	2.04"	0.68"	3.6 lb
EL57TA22	#18	55M	3.25"	7.57"	3.28"	1.01"	10.8 lb
EL43TA22	#14	45M	2.5"	6.22"	2.6"	1.02"	5.4 lb

NVENT LENTON STANDARD COUPLERS - A32K



- For use with ASTM A1035 Grades 100 and 120 Rebar

Part Number	Rebar Size, US	Rebar Size, Canada	Diameter (Ø)	Length (L)	Bar Depth (BD)	Bar Gap (BG)	Unit Weight
EL12A32K	#4	10M	1"	1.96"	0.73"	0.5"	0.4 lb
EL16A32K	#5	15M	1"	2.41"	0.96"	0.49"	0.4 lb
EL20A32K	#6	20M	1.25"	3.41"	1.37"	0.67"	0.8 lb
EL22A32K	#7		1.25"	3.6"	1.46"	0.68"	0.8 lb
EL25A32K	#8	25M	1.5"	3.8"	1.57"	0.66"	1.2 lb
EL28A32K	#9	30M	1.5"	3.97"	1.65"	0.67"	1.1 lb
EL32A32K	#10		1.75"	4.23"	1.78"	0.67"	1.6 lb
EL36A32K	#11	35M	2"	4.76"	2.04"	0.68"	2.5 lb
EL40A32K			2.25"	5.17"	2.25"	0.67"	3.5 lb
EL43TA32K	#14	45M	2.25"	6.22"	2.6"	1.02"	3.8 lb

nVent LENTON Standard Transition Couplers

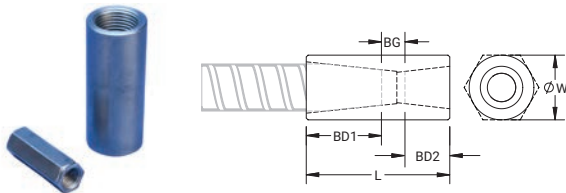
nVent LENTON Standard Transition Couplers are designed to splice different diameter bars where at least one bar can be rotated and the bar is not restricted in its axial direction.

✓ Slim design maintains concrete cover

✓ Installs quickly and easily

✓ Product available globally; for regional product requests, contact your local nVent LENTON Sales Representative

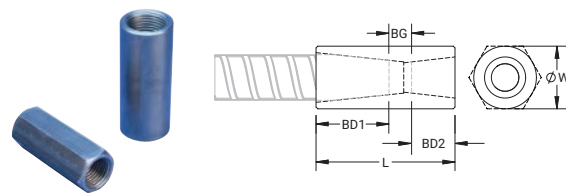
NVENT LENTON TRANSITION COUPLERS - A12



- For use with ASTM A615/A706 Grades 60 and 80 Rebar

Part Number	Rebar Size, US	Rebar Size, Canada	Hex Width (W)	Diameter (Ø)	Length (L)	Bar Depth 1 (BD1)	Bar Depth 2 (BD2)	Bar Gap (BG)	Unit Weight	Certifications
EL1210A12	#4, #3		0.67"		2.15"	0.73"	0.71"	0.71"	0.2 lb	
EL1612A12	#5, #4	15M, 10M	0.87"		2.4"	0.96"	0.73"	0.71"	0.3 lb	IAPMO®-UES, LA City Approval
EL1614A12			0.87"		2.5"	0.96"	0.84"	0.7"	0.3 lb	
EL2016A12	#6, #5	20M, 15M	1.06"		3.15"	1.37"	0.96"	0.82"	0.6 lb	IAPMO®-UES, LA City Approval
EL2220A12	#7, #6		1.18"		3.74"	1.46"	1.37"	0.91"	0.8 lb	IAPMO®-UES, LA City Approval
EL2520A12	#8, #6	25M, 20M		1.38"	3.56"	1.57"	1.37"	0.62"	1.1 lb	
EL2522A12	#8, #7			1.38"	3.94"	1.57"	1.46"	0.91"	1.1 lb	IAPMO®-UES, LA City Approval
EL2820A12	#9, #6	30M, 20M		1.63"	3.96"	1.65"	1.37"	0.94"	1.5 lb	
EL2825A12	#9, #8	30M, 25M		1.63"	4.11"	1.65"	1.57"	0.89"	1.5 lb	IAPMO®-UES, LA City Approval
EL3225A12	#10, #8			1.75"	4.29"	1.78"	1.57"	0.94"	2 lb	
EL3228A12	#10, #9			1.75"	4.35"	1.78"	1.65"	0.92"	1.9 lb	IAPMO®-UES, LA City Approval
EL3622A12	#11, #7			1.88"	4.49"	2.04"	1.46"	0.99"	2.7 lb	
EL3632A12	#11, #10			1.88"	4.72"	2.04"	1.78"	0.9"	2.5 lb	IAPMO®-UES, LA City Approval
EL4032A12				2.13"	4.96"	2.25"	1.78"	0.93"	3.3 lb	
EL43T36A12	#14, #11	45M, 35M		2.25"	5.81"	2.6"	2.04"	1.17"	4.6 lb	IAPMO®-UES, LA City Approval
EL50T32A12				2.75"	5.77"	2.76"	1.78"	1.23"	6.6 lb	
EL50T40A12				2.75"	6.2"	2.76"	2.25"	1.19"	6.8 lb	
EL57T36A12	#18, #11	55M, 35M		3"	6.57"	3.28"	2.04"	1.25"	9.9 lb	IAPMO®-UES, LA City Approval
EL57T43TA12	#18, #14	55M, 45M		3"	7.26"	3.28"	2.6"	1.38"	10.7 lb	IAPMO®-UES, LA City Approval

NVENT LENTON TRANSITION COUPLERS - A2



- For use with ASTM A615/A706 Grades 60 and 80 Rebar

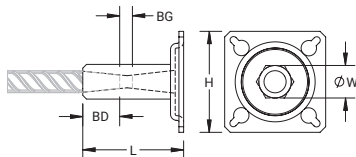
Part Number	Rebar Size, US	Rebar Size, Canada	Hex Width (W)	Diameter (Ø)	Length (L)	Bar Depth 1 (BD1)	Bar Depth 2 (BD2)	Bar Gap (BG)	Unit Weight	Certifications
EL1210A2	#4, #3		0.69"		2.13"	0.58"	0.69"	0.86"	0.2 lb	
EL1612A2	#5, #4	15M, 10M	0.88"		2.31"	0.86"	0.58"	0.87"	0.3 lb	IAPMO®-UES, LA City Approval
EL2012A2	#6, #4	20M, 10M	1.06"		2.72"	1.09"	0.58"	1.05"	0.6 lb	
EL2016A2	#6, #5	20M, 15M	1.06"		3"	1.09"	0.86"	1.05"	0.9 lb	IAPMO®-UES, LA City Approval
EL2216A2	#7, #5		1.19"		3.09"	1.26"	0.86"	0.97"	0.8 lb	
EL2220A2	#7, #6		1.19"		3.41"	1.26"	1.09"	1.06"	0.8 lb	IAPMO®-UES, LA City Approval
EL2516A2	#8, #5	25M, 15M		1.38"	3.19"	1.36"	0.86"	0.97"	0.9 lb	
EL2520A2	#8, #6	25M, 20M		1.38"	3.5"	1.36"	1.09"	1.05"	0.9 lb	

Part Number	Rebar Size, US	Rebar Size, Canada	Hex Width (W)	Diameter (Ø)	Length (L)	Bar Depth 1 (BD1)	Bar Depth 2 (BD2)	Bar Gap (BG)	Unit Weight	Certifications
EL2522A2	#8, #7			1.38"	3.69"	1.36"	1.26"	1.07"	0.9 lb	IAPMO®-UES, LA City Approval
EL2816A2	#9, #5	30M, 15M		1.38"	3.31"	1.49"	0.86"	0.96"	1.1 lb	
EL2820A2	#9, #6	30M, 20M		1.5"	3.63"	1.49"	1.09"	1.05"	1.2 lb	
EL2825A2	#9, #8	30M, 25M		1.5"	3.91"	1.49"	1.36"	1.06"	1.2 lb	IAPMO®-UES, LA City Approval
EL2822A2	#9, #7			1.5"	3.81"	1.49"	1.26"	1.06"	1.3 lb	
EL3220A2	#10, #6			1.75"	3.75"	1.58"	1.09"	1.08"	1.8 lb	
EL3228A2	#10, #9			1.75"	4.13"	1.58"	1.49"	1.06"	1.8 lb	IAPMO®-UES, LA City Approval
EL3225A2	#10, #8			1.75"	4"	1.58"	1.36"	1.06"	1.8 lb	
EL3222A2	#10, #7			1.75"	3.91"	1.58"	1.26"	1.07"	1.9 lb	
EL3632A2	#11, #10			1.88"	4.31"	1.68"	1.58"	1.05"	2 lb	IAPMO®-UES, LA City Approval
EL3620A2	#11, #6	35M, 20M		1.88"	3.84"	1.68"	1.09"	1.07"	2.1 lb	
EL3622A2	#11, #7			1.88"	4"	1.68"	1.26"	1.06"	2.1 lb	
EL3625A2	#11, #8	35M, 25M		1.88"	4.09"	1.68"	1.36"	1.05"	2.1 lb	
EL3628A2	#11, #9	35M, 30M		1.88"	4.22"	1.68"	1.49"	1.05"	2.1 lb	
EL3832A2				2"	4.5"	1.75"	1.58"	1.17"	2.5 lb	
EL43T25A2	#14, #8	45M, 25M		2.25"	4.78"	2.2"	1.36"	1.22"	3.7 lb	
EL43T28A2	#14, #9	45M, 30M		2.25"	4.91"	2.2"	1.49"	1.22"	3.7 lb	
EL43T32A2	#14, #10			2.25"	5"	2.2"	1.58"	1.22"	3.7 lb	
EL43T36A2	#14, #11	45M, 35M		2.25"	5.09"	2.2"	1.68"	1.21"	3.6 lb	IAPMO®-UES, LA City Approval
EL57T25A2	#18, #8	55M, 25M		3"	5.38"	2.81"	1.36"	1.21"	7.4 lb	
EL57T28A2	#18, #9	55M, 30M		3"	5.5"	2.81"	1.36"	1.33"	7.5 lb	
EL57T32A2	#18, #10			3"	5.59"	2.81"	1.49"	1.29"	7.6 lb	
EL57T36A2	#18, #11	55M, 35M		3"	5.69"	2.81"	1.58"	1.3"	7.6 lb	IAPMO®-UES, LA City Approval
EL57T43TA2	#18, #14	55M, 45M		3"	6.31"	2.81"	2.2"	1.3"	8.2 lb	IAPMO®-UES, LA City Approval

nVent LENTON Form Saver Couplers

nVent LENTON Form Saver Couplers address the challenge of joining reinforcing steel bars (rebar) in segmental construction while protecting valuable forms from damage.

NVENT LENTON FORM SAVER COUPLER WITH MOUNTING PLATE - SA



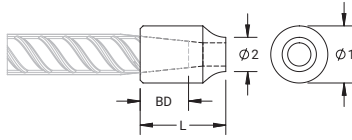
- Designed to splice the same diameter bars where the second bar can be rotated and is not restricted in its axial direction
- Durable mounting plates allow for easy attachment to forms
- Built-in thread cover or screw-in plug protects internal threads from concrete paste contamination

Part Number	Rebar Size, US	Rebar Size, Canada	Hex Width (W)	Diameter (Ø)	Height (H)	Length (L)	Bar Depth (BD)	Bar Gap (BG)	Unit Weight	Certifications
EL12SA	#4	10M	0.69"		2.25"	1.94"	0.58"	0.47"	0.3 lb	IAPMO®-UES, LA City Approval
EL16SA	#5	15M	0.88"		2.25"	2.5"	0.86"	0.47"	0.4 lb	IAPMO®-UES, LA City Approval
EL20SA	#6	20M	1.06"		2.25"	3.13"	1.09"	0.66"	0.6 lb	IAPMO®-UES, LA City Approval
EL22SA	#7		1.19"		2.25"	3.47"	1.26"	0.66"	0.8 lb	IAPMO®-UES, LA City Approval
EL25SA	#8	25M		1.38"	2.25"	3.66"	1.36"	0.66"	1 lb	IAPMO®-UES, LA City Approval
EL28SA	#9	30M		1.5"	2.5"	3.88"	1.49"	0.63"	1.1 lb	IAPMO®-UES, LA City Approval
EL32SA	#10			1.75"	2.5"	4.03"	1.58"	0.63"	1.5 lb	IAPMO®-UES, LA City Approval
EL36SA	#11	35M		1.88"	2.5"	4.22"	1.68"	0.63"	1.8 lb	IAPMO®-UES, LA City Approval

nVent LENTON Weldable Couplers

nVent LENTON Weldable Couplers provide a quick and easy solution for connecting reinforcing steel bar (rebar) to structural steel sections or plates.

NVENT LENTON WEDABLE HALF COUPLER - C2/C3J



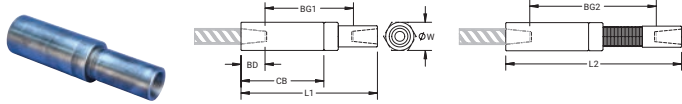
- Product available globally; for regional product requests, contact your local nVent LENTON Sales Representative
- Internally taper threaded on one end, with the other end prepared for welding
- Machined from weldable grades of steel
- Available in customer specified lengths

Part Number	Coupler Body Length	Rebar Size, US	Rebar Size, Canada	Diameter 1 (Ø1)	Diameter 2 (Ø2)	Length (L)	Bar Depth (BD)	Unit Weight	Certifications
EL12C2	Standard	#4	10M	0.79"	0.44"	1.19"	0.58"	0.1 lb	IAPMO®-UES, LA City Approval
EL16C2	Standard	#5	15M	0.98"	0.56"	1.38"	0.86"	0.2 lb	IAPMO®-UES, LA City Approval
EL20C3J	Standard	#6	20M	1.25"	0.88"	2.16"	1.09"	0.5 lb	IAPMO®-UES, LA City Approval
EL22C3J	Standard	#7		1.25"	0.75"	2.41"	1.26"	0.5 lb	IAPMO®-UES, LA City Approval
EL25C3J	Standard	#8	25M	1.56"	1"	2.53"	1.36"	0.9 lb	IAPMO®-UES, LA City Approval
EL25C3J1200	MTO	#8	25M	1.56"	1"	12"	1.36"	6.1 lb	
EL28C3J	Standard	#9	30M	1.56"	0.94"	2.69"	1.49"	0.9 lb	IAPMO®-UES, LA City Approval
EL28C3J1200	MTO	#9	30M	1.56"	0.94"	12"	1.49"	5.9 lb	
EL32C3J	Standard	#10		2"	0.94"	2.88"	1.58"	1.6 lb	IAPMO®-UES, LA City Approval
EL32C3J1200	MTO	#10		2"	0.94"	12"	1.58"	9.7 lb	
EL36C3J	Standard	#11	35M	2"	1.13"	2.97"	1.68"	1.6 lb	IAPMO®-UES, LA City Approval
EL36C3J1200	MTO	#11	35M	2"	1.13"	12"	1.68"	9.6 lb	
EL38C3J	Standard	#12		2.28"	1.41"	3.13"	1.75"	2.6 lb	
EL43TC3J	Standard	#14	45M	2.38"	1.41"	3.75"	2.2"	2.9 lb	IAPMO®-UES, LA City Approval
EL43TC3J1200	MTO	#14	45M	2.38"	1.41"	12"	2.2"	13.2 lb	
EL57TC3J	Standard	#18	55M	3.13"	1.75"	4.5"	2.81"	5.5 lb	IAPMO®-UES, LA City Approval
EL57TC3J1200	MTO	#18	55M	3.13"	1.75"	12"	2.81"	22 lb	

nVent LENTON Position Couplers

nVent LENTON Position Couplers are designed to splice two curved, bent, or straight bars of the same diameter, when neither bar can be rotated.

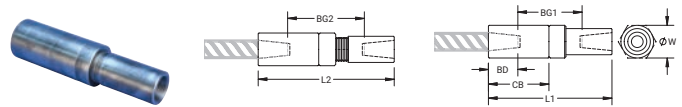
NVENT LENTON POSITION COUPLERS - P13L



- Adjustability in the female end of the coupler allows the coupler to extend out to meet the taper-threaded reinforcing bar
- For use with ASTM A615/A706 Grades 60 and 80 Rebar

Part Number	Rebar Size, US	Rebar Size, Canada	Diameter (Ø)	Length 1 (L1)	Length 2 (L2)	Bar Depth (BD)	Bar Gap 1 (BG1)	Bar Gap 2 (BG2)	Coupler Body (CB)	Unit Weight
EL10P13L	#3		1"	4.72"	6.09"	0.71"	3.3"	4.67"	2.75"	0.8 lb
EL12P13L	#4	10M	1"	4.68"	6.07"	0.73"	3.22"	4.61"	2.74"	0.8 lb
EL14P13L			1"	5.27"	6.77"	0.84"	3.59"	5.09"	3.25"	0.8 lb
EL16P13L	#5	15M	1.38"	5.66"	7.31"	0.96"	3.74"	5.39"	3.51"	2.5 lb
EL18P13L			1.38"	6.37"	8.18"	1.16"	4.05"	5.86"	3.96"	2.8 lb
EL20P13L	#6	20M	1.38"	7.83"	10.24"	1.37"	5.09"	7.5"	4.94"	2.8 lb
EL22P13L	#7		1.75"	8.25"	10.76"	1.46"	5.34"	7.84"	5.21"	4.3 lb
EL25P13L	#8	25M	1.75"	8.68"	11.28"	1.57"	5.53"	8.14"	5.52"	4.2 lb
EL28P13L	#9	30M	2"	9.02"	11.71"	1.65"	5.72"	8.41"	5.77"	5.6 lb
EL30P13L			2.25"	10.3"	13.39"	2.04"	6.22"	9.31"	6.64"	7.2 lb
EL32P13L	#10		2.25"	9.81"	12.63"	1.78"	6.25"	9.07"	6.15"	7.9 lb
EL34P13L			2.5"	11.02"	14.23"	2.17"	6.68"	9.89"	6.98"	10.9 lb
EL36P13L	#11	35M	2.5"	10.65"	13.73"	2.04"	6.57"	9.65"	6.76"	10.3 lb
EL38P13L	#12		2.75"	10.92"	14.06"	2.1"	6.72"	9.86"	6.87"	12.8 lb
EL40P13L			2.75"	11.42"	14.71"	2.25"	6.92"	10.21"	7.25"	13.4 lb
EL43TP13L	#14	45M	3"	13.42"	17.02"	2.6"	8.21"	11.82"	8.4"	18.3 lb
EL50TP13L			3.5"	14.1"	17.87"	2.76"	8.58"	12.35"	8.8"	25.8 lb
EL57TP13L	#18	55M	4"	15.91"	20.2"	3.28"	9.35"	13.64"	10.07"	39.9 lb

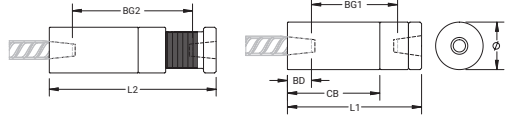
NVENT LENTON POSITION COUPLERS - P14L



- For use with ASTM A615/A706 Grades 60 and 80 Rebar

Part Number	Rebar Size, US	Rebar Size, Canada	Diameter (Ø)	Length 1 (L1)	Length 2 (L2)	Bar Depth (BD)	Bar Gap 1 (BG1)	Bar Gap 2 (BG2)	Coupler Body (CB)	Unit Weight
EL10P14L	#3		1"	3.69"	3.96"	0.71"	2.27"	2.54"	1.65"	0.6 lb
EL12P14L	#4	10M	1"	3.84"	4.11"	0.73"	2.38"	2.65"	1.82"	0.6 lb
EL14P14L			1"	4.11"	4.38"	0.84"	2.43"	2.7"	2.01"	0.6 lb
EL16P14L	#5	15M	1.38"	4.39"	4.66"	0.96"	2.47"	2.74"	2.13"	1 lb
EL18P14L			1.38"	4.91"	5.17"	1.16"	2.59"	2.85"	2.41"	1.1 lb
EL20P14L	#6	20M	1.38"	5.98"	6.43"	1.37"	3.24"	3.69"	2.98"	1.7 lb
EL22P14L	#7		1.75"	6.31"	6.76"	1.46"	3.39"	3.84"	3.15"	2.4 lb
EL25P14L	#8	25M	1.75"	6.63"	7.08"	1.57"	3.49"	3.94"	3.37"	2.8 lb
EL28P14L	#9	30M	2"	6.89"	7.35"	1.65"	3.59"	4.05"	3.54"	3.8 lb
EL30P14L			2.25"	7.79"	8.24"	2.04"	3.71"	4.16"	4.01"	5.3 lb
EL32P14L	#10		2.25"	7.56"	8.01"	1.78"	4.02"	4.45"	3.79"	5.4 lb
EL34P14L			2.5"	8.37"	8.82"	2.17"	4.03"	4.48"	4.22"	7.3 lb
EL36P14L	#11	35M	2.5"	8.13"	8.58"	2.04"	4.05"	4.5"	4.13"	6.9 lb
EL38P14L	#12		2.75"	8.34"	8.79"	2.1"	4.14"	4.59"	4.18"	8.6 lb
EL40P14L			2.75"	8.7"	9.15"	2.25"	4.21"	4.65"	4.41"	9 lb
EL43TP14L	#14	45M	3"	10.78"	11.59"	2.6"	5.58"	6.39"	5.6"	13.3 lb
EL50TP14L			3.5"	11.31"	12.45"	2.76"	5.79"	6.93"	5.84"	18.4 lb
EL57TP14L	#18	55M	4"	12.61"	13.41"	3.28"	6.04"	6.85"	6.59"	26.3 lb

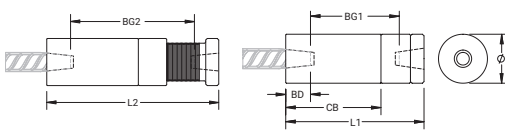
NVENT LENTON POSITION COUPLERS - P8



- Adjustability in the female end of the coupler allows the coupler to extend out to meet the taper-threaded reinforcing bar
- For use with ASTM A615/A706 Grades 60 and 80 Rebar

Part Number	Coupler Body Length	Rebar Size, US	Rebar Size, Canada	Diameter (Ø)	Length 1 (L1)	Length 2 (L2)	Bar Depth (BD)	Bar Gap 1 (BG1)	Bar Gap 2 (BG2)	Coupler Body (CB)	Unit Weight	Certifications
EL16P8	Standard	#5	15M	1.81"	5.11"	6.69"	0.86"	3.39"	4.97"	3.52"	3.4 lb	IAPMO®-UES, LA City Approval
EL20P8	Standard	#6	20M	1.81"	5.84"	7.82"	1.09"	3.66"	5.64"	4.25"	3.8 lb	IAPMO®-UES, LA City Approval
EL22P8	Standard	#7		1.81"	6.3"	8.45"	1.26"	3.78"	5.93"	4.71"	4 lb	IAPMO®-UES, LA City Approval
EL25P8	Standard	#8	25M	1.81"	6.73"	8.97"	1.36"	4.01"	6.25"	5.14"	4.2 lb	IAPMO®-UES, LA City Approval
EL28P8	Standard	#9	30M	2.5"	6.88"	9.26"	1.49"	3.9"	6.28"	5.29"	8.5 lb	IAPMO®-UES, LA City Approval
EL32P8	Standard	#10		2.5"	7.31"	9.78"	1.58"	4.15"	6.62"	5.72"	8.7 lb	IAPMO®-UES, LA City Approval
EL36P8	Standard	#11	35M	2.5"	7.82"	10.39"	1.68"	4.46"	7.03"	6.23"	9.1 lb	IAPMO®-UES, LA City Approval
EL36P82400	Customer Specified	#11	35M	2.5"	25.59"	28.16"	1.68"	22.23"	24.8"	24"	37.7 lb	
EL36P84700	Customer Specified	#11	35M	2.5"	48.59"	51.16"	1.68"	45.23"	47.8"	47"	65.7 lb	
EL43TP8	Standard	#14	45M	3"	11.4"	15.1"	2.2"	7"	10.7"	7.8"	18 lb	
EL57TP8	Standard	#18	55M	4"	13.68"	17.99"	2.81"	8.06"	12.37"	9.52"	37.9 lb	

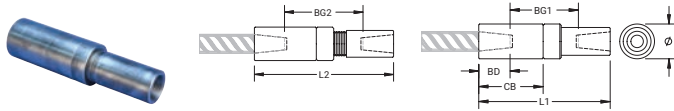
NVENT LENTON POSITION COUPLERS - P9



- For use with ASTM A615/A706 Grades 60 and 80 Rebar

Part Number	Rebar Size, US	Rebar Size, Canada	Diameter (Ø)	Length 1 (L1)	Length 2 (L2)	Bar Depth (BD)	Bar Gap 1 (BG1)	Bar Gap 2 (BG2)	Coupler Body (CB)	Unit Weight	Certifications
EL20P9	#6	20M	1.81"	4.28"	4.87"	1.09"	2.09"	2.68"	2.75"	2.7 lb	IAPMO®-UES, LA City Approval
EL22P9	#7		1.81"	4.56"	5.18"	1.26"	2.05"	2.68"	3.06"	2.8 lb	IAPMO®-UES, LA City Approval
EL25P9	#8	25M	1.81"	4.91"	5.5"	1.36"	2.24"	2.83"	3.38"	2.8 lb	IAPMO®-UES, LA City Approval
EL28P9	#9	30M	2.5"	5.06"	5.68"	1.49"	2.09"	2.68"	3.56"	6 lb	IAPMO®-UES, LA City Approval
EL32P9	#10		2.5"	5.31"	5.93"	1.58"	2.17"	2.8"	3.81"	6.1 lb	IAPMO®-UES, LA City Approval
EL36P9	#11	35M	2.5"	5.72"	6.31"	1.68"	2.32"	2.91"	4.19"	6.3 lb	IAPMO®-UES, LA City Approval
EL38P9	#12		3"	5.88"	6.44"	1.75"	2.32"	2.99"	3.69"	8.9 lb	
EL43TP9	#14	45M	3"	8.81"	9.63"	2.2"	4.41"	5.24"	5"	12.4 lb	IAPMO®-UES, LA City Approval
EL57TP9	#18	55M	4"	10.5"	11.32"	2.81"	4.92"	5.75"	6.13"	24.8 lb	IAPMO®-UES, LA City Approval

NVENT LENTON POSITION COUPLERS - P24L



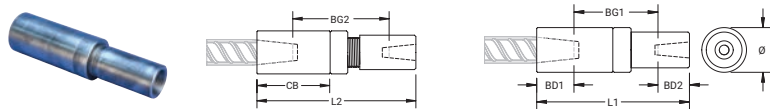
- For use with ASTM A615/A706 Grades 60, 80 and 100 Rebar

Part Number	Rebar Size, US	Rebar Size, Canada	Diameter (Ø)	Length 1 (L1)	Length 2 (L2)	Bar Depth (BD)	Bar Gap 1 (BG1)	Bar Gap 2 (BG2)	Coupler Body (CB)	Unit Weight
EL22P24L	#7		1.75"	6.78"	7.41"	1.46"	3.86"	4.49"	3.64"	3.4 lb
EL25P24L	#8	25M	1.88"	7.19"	7.82"	1.57"	4.05"	4.68"	3.87"	4.11 lb
EL28P24L	#9	30M	2.25"	7.57"	8.2"	1.65"	4.27"	4.9"	4.09"	6.26 lb
EL32P24L	#10		2.38"	8.2"	8.83"	1.78"	4.64"	5.27"	4.33"	7.45 lb
EL36P24L	#11	35M	2.75"	8.95"	9.58"	2.04"	4.87"	5.5"	4.74"	11.22 lb
EL43TP24L	#14	45M	3.13"	11.65"	12.75"	2.6"	6.45"	7.55"	6.3"	18.25 lb
EL57TP24L	#18	55M	4"	13.65"	14.75"	3.28"	7.09"	8.19"	7.39"	34.11 lb

nVent LENTON Position Transition Couplers

nVent LENTON Position Transition Couplers are designed to splice two curved, bent, or straight bars of different diameters.

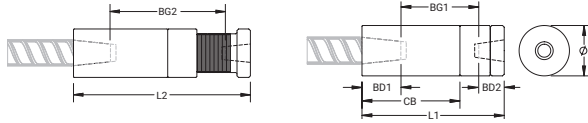
NVENT LENTON POSITION TRANSITION COUPLERS - P14



- For use with ASTM A615/A706 Grades 60, 80 and 100 Rebar

Part Number	Rebar Size, US	Rebar Size, Canada	Diameter (Ø)	Length 1 (L1)	Length 2 (L2)	Bar Depth 1 (BD1)	Bar Depth 2 (BD2)	Bar Gap 1 (BG1)	Bar Gap 2 (BG2)	Coupler Body (CB)
EL2016P14L	#6, #5	20M, 15M	1.38"	5.98"	6.43"	1.38"	0.94"	2.28"	2.73"	2.98"
EL2216P14L	#7, #5		1.57"	6.31"	6.76"	1.46"	0.94"	3.79"	4.24"	3.15"

NVENT LENTON POSITION TRANSITION COUPLERS - P9



- For use with ASTM A615/A706 Grades 60, 80 and 100 Rebar

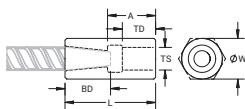
Part Number	Rebar Size, US	Rebar Size, Canada	Diameter (Ø)	Length 1 (L1)	Length 2 (L2)	Bar Depth 1 (BD1)	Bar Depth 2 (BD2)	Bar Gap 1 (BG1)	Bar Gap 2 (BG2)	Coupler Body (CB)	Unit Weight
EL2220P9	#7, #6		1.81"	4.56"	5.18"	1.26"	1.09"	2.21"	2.83"	3.06"	2.8 lb
EL2520P9	#8, #6	25M, 20M	1.81"	4.91"	5.5"	1.36"	1.09"	2.46"	3.05"	3.38"	3 lb
EL2522P9	#8, #7		1.81"	4.91"	5.5"	1.36"	1.26"	2.29"	2.88"	3.38"	2.9 lb
EL2820P9	#9, #6	30M, 20M	2.5"	5.06"	5.68"	1.49"	1.09"	2.48"	3.1"	3.56"	6.3 lb
EL2822P9	#9, #7		2.5"	5.06"	5.68"	1.49"	1.26"	2.31"	2.93"	3.56"	6.2 lb
EL2825P9	#9, #8	30M, 25M	2.5"	5.06"	5.68"	1.49"	1.36"	2.21"	2.83"	3.56"	6.1 lb
EL3222P9	#10, #7		2.5"	5.06"	5.93"	1.58"	1.26"	2.22"	3.09"	3.81"	6.4 lb
EL3225P9	#10, #8		2.5"	5.31"	5.93"	1.58"	1.36"	2.37"	2.99"	3.81"	6.3 lb
EL3228P9	#10, #9		2.5"	5.31"	5.93"	1.58"	1.49"	2.24"	2.86"	3.81"	6.2 lb
EL3625P9	#11, #8	35M, 25M	2.5"	5.72"	6.31"	1.68"	1.36"	2.68"	3.27"	4.19"	6.7 lb
EL3628P9	#11, #9	35M, 30M	2.5"	5.72"	6.31"	1.68"	1.49"	2.55"	3.14"	4.19"	6.6 lb
EL3632P9	#11, #10		2.5"	5.72"	6.31"	1.68"	1.58"	2.46"	3.05"	4.19"	6.4 lb
EL43T25P9	#14, #8	45M, 25M	3"	8.81"	9.63"	2.2"	1.36"	5.25"	6.07"	5"	13.4 lb
EL43T28P9	#14, #9	45M, 30M	3"	8.81"	9.63"	2.2"	1.49"	5.12"	5.94"	5"	13.3 lb
EL43T32P9	#14, #10		3"	8.81"	9.63"	2.2"	1.58"	5.03"	5.85"	5"	13.2 lb
EL43T36P9	#14, #11	45M, 35M	3"	8.81"	9.63"	2.2"	1.68"	4.93"	5.75"	5"	13 lb
EL57T25P9	#18, #8	55M, 25M	4"	10.06"	11.03"	2.81"	1.36"	5.89"	6.86"	6"	27.5 lb
EL57T28P9	#18, #9	55M, 30M	4"	10.06"	11.03"	2.81"	1.49"	5.76"	6.73"	6"	27.4 lb
EL57T32P9	#18, #10		4"	10.06"	11.03"	2.81"	1.58"	5.67"	6.64"	6"	27.3 lb
EL57T36P9	#18, #11	55M, 35M	4"	10.06"	11.03"	2.81"	1.68"	5.57"	6.54"	6"	27.1 lb
EL57T43TP9	#18, #14	55M, 45M	4"	10.06"	11.03"	2.81"	2.2"	5.05"	6.02"	6"	26.4 lb

nVent LENTON Parallel Bolt Couplers

nVent LENTON Parallel Bolt Couplers provide a full strength joint between a reinforcing steel bar (rebar) and a standard bolt or all-thread bar.

- ✓ Provides continuity between reinforcing bar and imperial UNC all-thread rod or bolts
- ✓ May be used to anchor load-bearing equipment to foundations, columns or walls
- ✓ Machined from non-weldable grades of material, but can be tack welded
- ✓ Product available globally; for regional product requests, contact your local nVent LENTON Sales Representative

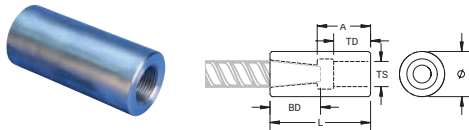
NVENT LENTON PARALLEL BOLT COUPLERS - S4



Part Number	Rebar Size, US	Rebar Size, Canada	Hex Width (W)	Diameter (Ø)	Length (L)	A	Bar Depth (BD)	Thread Size (TS)	Thread Depth (TD)	Unit Weight
EL10S4	#3		0.88"		2.03"	1.06"	0.69"	1/2" UNC	0.56"	0.3 lb
EL12S4	#4	10M	1.06"		2.09"	1.25"	0.58"	5/8" UNC	0.75"	0.5 lb
EL16S4	#5	15M	1.19"		2.56"	1.44"	0.86"	3/4" UNC	0.94"	0.6 lb
EL20S4	#6	20M		1.38"	3.06"	1.63"	1.09"	7/8" UNC	1.13"	0.9 lb
EL22S4	#7			1.75"	3.42"	1.81"	1.26"	1" UNC	1.31"	1.8 lb
EL25S4	#8	25M		1.75"	3.95"	2.25"	1.36"	1 1/8" UNC	1.5"	1.8 lb

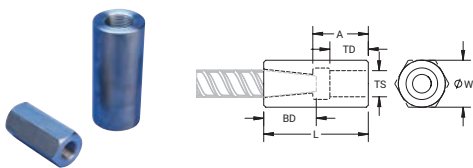
Part Number	Rebar Size, US	Rebar Size, Canada	Hex Width (W)	Diameter (Ø)	Length (L)	A	Bar Depth (BD)	Thread Size (TS)	Thread Depth (TD)	Unit Weight
EL28S4	#9	30M		1.88"	4.27"	2.44"	1.49"	1 1/4" UNC	1.69"	2.2 lb
EL32S4	#10			2.25"	4.55"	2.63"	1.58"	1 1/2" UNC	1.88"	3.4 lb
EL36S4B	#11	35M		2.25"	4.75"	2.63"	1.68"	1 1/2" UNC	1.88"	3.4 lb
EL36S4A	#11	35M		2.25"	5.63"	3.5"	1.68"	1 1/4" UNC	2.5"	4.5 lb
EL36S4	#11	35M		2.5"	5.14"	3.13"	1.68"	1 3/4" UNC	2.13"	4.5 lb
EL43TS4	#14	45M		3"	6.14"	3.5"	2.2"	2" UNC	2.5"	8.2 lb
EL57TS4	#18	55M		4"	7.63"	4.38"	2.81"	2 1/2" UNC	3.38"	18.5 lb

NVENT LENTON PARALLEL BOLT COUPLERS - S5



Part Number	Rebar Size, US	Rebar Size, Canada	Diameter (Ø)	Length (L)	A	Bar Depth (BD)	Thread Size (TS)	Thread Depth (TD)	Unit Weight
EL25S5	#8	25M	1.75"	3.95"	2.25"	1.36"	1.125" UN	1.5"	1.8 lb
EL28S5	#9	30M	1.88"	4.27"	2.44"	1.49"	1.25" UN	1.69"	2.2 lb
EL32S5A	#10		2"	4.55"	2.63"	1.58"	1.375" UN	1.88"	2.5 lb
EL32S5B	#10		1.88"	4.55"	2.63"	1.58"	1.25" UN	1.88"	4.5 lb
EL36S5	#11	35M	2.5"	5.14"	3.13"	1.68"	1.75" UN	2.13"	4.5 lb
EL36S5A	#11	35M	2"	5.14"	3.13"	1.68"	1.375" UN	2.13"	2.7 lb
EL43TS5	#14	45M	3"	6.14"	3.5"	2.2"	2" UN	2.5"	8.2 lb
EL57TS5	#18	55M	4"	7.63"	4.38"	2.81"	2.5" UN	3.38"	18 lb
EL57TS5A	#18	55M	3.5"	7.63"	4.38"	2.81"	2.25" UN	3.38"	14.1 lb

NVENT LENTON PARALLEL BOLT COUPLERS - S13



Part Number	Rebar Size, US	Rebar Size, Canada	Diameter (Ø)	Length (L)	A	Bar Depth (BD)	Thread Size (TS)	Thread Depth (TD)	Unit Weight
EL22S13	#7		1.75"	4.1"	2.28"	1.46"	M27	1.2"	1.5 lb
EL25S13	#8	25M	1.75"	4.31"	2.4"	1.57"	M30	1.32"	2.9 lb
EL28S13	#9	30M	1.88"	4.53"	2.53"	1.65"	M33	1.45"	2.6 lb
EL32S13	#10		2.25"	4.9"	2.77"	1.77"	M39	1.69"	3.1 lb

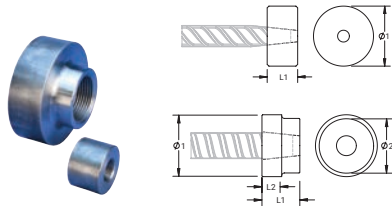
nVent LENTON Terminator and Mechanical Anchors

nVent LENTON Taper-Threaded Terminator and Mechanical Anchors incorporates the time-tested and field-proven nVent LENTON Tapered Thread to attach the “head” to the reinforcing bar.

✔ Replace conventional hooked reinforcing bar

✔ Product available globally; for regional product requests, contact your local nVent LENTON Sales Representative

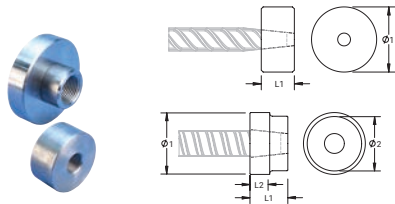
NVENT LENTON MECHANICAL ANCHOR (TERMINATOR) - D6



- Simplifies reinforcing bar placement and lowers placing costs
- Head area exceeds 5x bar area (net 4x)
- For use with ASTM A615/A706 Grades 60, 80 and 100 Rebar

Part Number	Rebar Size, US	Rebar Size, Canada	Diameter 1 (Ø1)	Diameter 2 (Ø2)	Length 1 (L1)	Length 2 (L2)	Unit Weight	Certifications
EL12D6	#4	10M	1.38"		0.56"		0.2 lb	IAPMO®-UES
EL16D6	#5	15M	1.5"		0.88"		0.5 lb	IAPMO®-UES
EL20D6	#6	20M	1.88"		1.13"		0.8 lb	IAPMO®-UES
EL22D6	#7		2"		1.25"		0.9 lb	IAPMO®-UES
EL25D6	#8	25M	2.25"		1.38"		1.49 lb	IAPMO®-UES
EL28D6	#9	30M	2.75"		1.5"		1.87 lb	IAPMO®-UES
EL32D6	#10		3"		1.56"		2.6 lb	IAPMO®-UES
EL36D6	#11	35M	3.25"		1.69"		3.1 lb	IAPMO®-UES
EL38D6	#12		3.5"	3.15"	1.75"	0.75"	3.99 lb	
EL40D6			3.75"	3.15"	2.17"	1.17"	3.99 lb	IAPMO®-UES
EL43TD6	#14	45M	4"	3.15"	2.13"	1.13"	5.1 lb	IAPMO®-UES
EL57TD6	#18	55M	5.13"	3.15"	2.75"	1.75"	10.1 lb	IAPMO®-UES

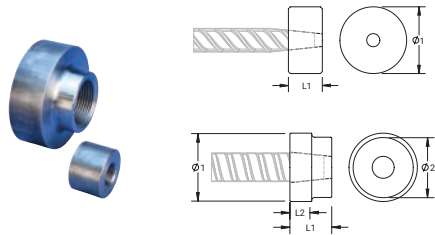
NVENT LENTON MECHANICAL ANCHOR (TERMINATOR) - D14



- Simplifies reinforcing bar placement and lowers placing costs
- Head area exceeds 10x bar area (net 9x)
- For use with ASTM A615/A706 Grades 60, 80 and 100 Rebar

Part Number	Rebar Size, US	Rebar Size, Canada	Diameter 1 (Ø1)	Diameter 2 (Ø2)	Length 1 (L1)	Length 2 (L2)	Unit Weight
EL12D14	#4	10M	1.75"		0.72"		0.5 lb
EL16D14	#5	15M	2"		0.94"		0.8 lb
EL20D14	#6	20M	2.5"		1.37"		1.8 lb
EL22D14	#7		2.75"		1.46"		2.3 lb
EL25D14	#8	25M	3.25"		1.57"		3.4 lb
EL28D14	#9	30M	4"	3.15"	1.65"	0.65"	4.2 lb
EL32D14	#10		4"	3.15"	1.78"	0.78"	4.5 lb
EL36D14	#11	35M	5.13"	3.15"	2.04"	1.04"	7.58 lb
EL43TD14	#14	45M	5.5"	3.15"	2.64"	1.64"	12 lb
EL57TD14	#18	55M	7.25"	3.15"	3.31"	2.31"	26.3 lb

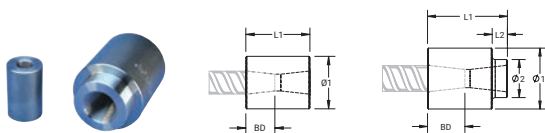
NVENT LENTON MECHANICAL ANCHOR (TERMINATOR) - D16



- Simplifies reinforcing bar placement and lowers placing costs
- Head area exceeds 5x bar area (net 4x)
- For use with ASTM A615/A706 Grades 60, 80 and 100 Rebar

Part Number	Rebar Size, US	Rebar Size, Canada	Diameter 1 (Ø1)	Diameter 2 (Ø2)	Length 1 (L1)	Length 2 (L2)	Unit Weight
EL12D16	#4	10M	1.38"		0.73"		0.3 lb
EL16D16	#5	15M	1.5"		0.94"		0.4 lb
EL20D16	#6	20M	1.88"		1.38"		0.9 lb
EL22D16	#7		2"		1.48"		1.1 lb
EL25D16	#8	25M	2.25"		1.57"		1.5 lb
EL28D16	#9	30M	2.75"		1.65"		2.4 lb
EL32D16	#10		3"		1.79"		3.1 lb
EL36D16	#11	35M	3.25"		2.05"	2.31"	4.1 lb
EL43TD16	#14	45M	4"	3.15"	2.64"	1.64"	6.73 lb
EL57TD16	#18	55M	5.13"	3.15"	3.31"	2.41"	12.74 lb

NVENT LENTON TERMINATOR MECHANICAL ANCHOR FOR FUTURE EXTENSION - A2D6



- Provides both development and mechanical splice capabilities
- Commonly used for future extensions in both beam/column and roof/column connections
- Head area exceeds 5x bar area (net 4x)
- For use with ASTM A615/A706 Grades 60, 80 and 100 Rebar

Part Number	Rebar Size, US	Rebar Size, Canada	Diameter 1 (Ø1)	Diameter 2 (Ø2)	Length 1 (L1)	Length 2 (L2)	Bar Depth (BD)	Unit Weight
EL12A2D6	#4	10M	1.38"		1.63"		0.58"	0.6 lb
EL16A2D6	#5	15M	1.5"		2.19"		0.86"	0.9 lb
EL20A2D6	#6	20M	1.88"		2.81"		1.09"	1.9 lb
EL22A2D6	#7		2"		3.16"		1.26"	2.4 lb
EL25A2D6	#8	25M	2.25"		3.34"		1.36"	3.2 lb
EL28A2D6	#9	30M	2.75"		3.59"		1.49"	5.3 lb
EL32A2D6	#10		3"		3.78"		1.58"	6.5 lb
EL36A2D6	#11	35M	3.25"		3.97"		1.68"	7.9 lb
EL43TA2D6	#14	45M	4"	2.5"	5.25"	1"	2.2"	13.93 lb
EL57TA2D6	#18	55M	5.13"	3"	6.47"	1"	2.78"	28.2 lb

nVent LENTON Taper-Threaded Accessories

nVent LENTON Taper-Threaded Accessories and complimentary parts are designed to work with nVent LENTON Taper-Threaded products.

NVENT LENTON TAPERED PLASTIC SCREW-IN PLUG - CPP



- Designed for use with the A12, A22 and A32K Coupler families
- Designed to keep dirt, water and concrete slurry out of the coupler during the concrete pour
- Color coded for the appropriate coupler size

Part Number	Rebar Size, US	Rebar Size, Canada	Diameter (Ø)	Height (H)	Color
EL10CPPB100	#3		0.67"	0.51"	Yellow
EL12CPPB100	#4	10M	0.67"	0.51"	Red
EL14CPPB100			0.87"	0.51"	Green
EL16CPPB100	#5	15M	0.87"	0.51"	Black
EL18CPPB100			1.06"	0.51"	White
EL20CPPB100	#6	20M	1.06"	0.51"	Yellow
EL22CPPB100	#7		1.3"	0.63"	Blue
EL25CPPB100	#8	25M	1.3"	0.63"	Red
EL28CPPB100	#9	30M	1.46"	0.63"	Black
EL30CPPB100			1.46"	0.63"	White
EL32CPPB100	#10		1.65"	0.63"	Yellow
EL36CPPB50	#11	35M	1.81"	0.63"	Blue
EL40CPPB50			2.05"	0.63"	Green
EL50CPPB40			2.52"	0.63"	Black

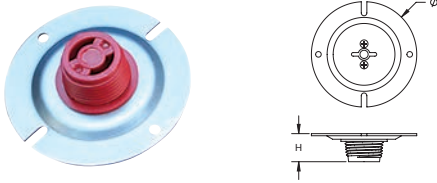
NVENT LENTON TAPERED PLASTIC SCREW-IN PLUG - ELCP



- Designed for use with the A2 Coupler families
- Designed to keep dirt, water and concrete slurry out of the coupler during the concrete pour
- Color coded for the appropriate coupler size

Part Number	Rebar Size, US	Rebar Size, Canada	Diameter (Ø)	Height (H)	Color
ELCP12	#4	10M	0.69"	0.39"	Red
ELCP16	#5	15M	0.88"	0.59"	Black
ELCP20	#6	20M	1.06"	0.59"	Yellow
ELCP22	#7		1.19"	0.59"	Blue
ELCP25	#8	25M	1.38"	0.59"	Red
ELCP28	#9	30M	1.5"	0.59"	Black
ELCP32	#10		1.75"	0.59"	Yellow
ELCP36	#11	35M	1.88"	0.67"	Blue
ELCP40			2.25"	0.67"	Green
ELCP43T	#14	45M	2.25"	0.67"	Red
ELCP57T	#18	55M	3"	0.67"	Blue

NVENT LENTON TAPERED SCREW-IN PLUG - CFF



- Designed for use with the A12, A22 and A32K Coupler families
- Designed to keep dirt, water and concrete slurry out of the coupler during the concrete pour
- Durable mounting plates allow for easy attachment to forms
- Color coded for the appropriate coupler size

Part Number	Rebar Size, US	Rebar Size, Canada	Diameter (Ø)	Height (H)	Color
EL22CFF	#7		2.95"	0.69"	Blue
EL25CFF	#8	25M	2.95"	0.69"	Red
EL28CFF	#9	30M	2.95"	0.69"	Black
EL30CFF			2.95"	0.69"	White
EL32CFF	#10		3.74"	0.69"	Yellow
EL36CFF	#11	35M	3.74"	0.69"	Blue
EL40CFF			3.74"	0.69"	Green
EL50CFF			3.74"	0.69"	Black

NVENT LENTON TAPERED PLASTIC SCREW-IN PLUG - CFFP



- Designed for use with the A12, A22 and A32K Coupler families
- Designed to keep dirt, water and concrete slurry out of the coupler during the concrete pour
- Durable mounting plates allow for easy attachment to forms
- Color coded for the appropriate coupler size

Part Number	Rebar Size, US	Rebar Size, Canada	Diameter (Ø)	Height (H)	Color
EL12CFFP	#4	10M	2.32"	0.89"	Red
EL14CFFP			2.32"	0.89"	Green
EL16CFFP	#5	15M	2.32"	0.89"	Black
EL20CFFP	#6	20M	2.32"	0.89"	Yellow
EL25CFFP	#8	25M	2.32"	0.89"	Red
EL28CFFP	#9	30M	2.32"	0.89"	Black

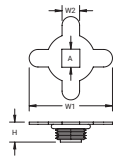
NVENT LENTON PARALLEL PLASTIC SCREW-IN PLUG - PFF



- Designed for use with the P13/P14 Coupler families
- Designed to keep dirt, water and concrete slurry out of the coupler during the concrete pour
- Durable mounting plates allow for easy attachment to forms
- Color coded for the appropriate coupler size

Part Number	Rebar Size, US	Rebar Size, Canada	Diameter (Ø)	Height (H)	Color
EL12PFFN	#4	10M	2.56"	0.67"	Red
EL16PFFN	#5	15M	2.56"	0.79"	Black
EL20PFFN	#6	20M	2.95"	0.79"	Yellow
EL22PFFN	#7		3.74"	0.79"	Blue
EL25PFFN	#8	25M	3.74"	0.79"	Red
EL28PFFN	#9	30M	3.74"	0.79"	Black
EL32PFFN	#10		3.74"	0.79"	Yellow
EL36PFFN	#11	35M	3.74"	0.79"	Blue
EL40PFFN			3.74"	0.79"	Green

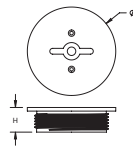
NVENT LENTON INTERNAL PLASTIC FORM SAVER PLUG - ELICP



- Designed for use with the A2 Coupler families
- Designed to keep dirt, water and concrete slurry out of the coupler during the concrete pour
- Durable mounting plates allow for easy attachment to forms
- O-ring provides hydraulic seal
- Color coded for the appropriate coupler size

Part Number	Rebar Size, US	Rebar Size, Canada	Width 1 (W1)	Width 2 (W2)	A	Height (H)	Color
ELICP20	#6	20M	2.25"	0.5"	0.39"	0.44"	Yellow
ELICP22	#7		2.38"	0.5"	0.52"	0.44"	Blue
ELICP25	#8	25M	2.5"	0.5"	0.52"	0.44"	Red
ELICP28	#9	30M	2.63"	0.5"	0.52"	0.44"	Black
ELICP32	#10		2.75"	0.5"	0.52"	0.44"	Yellow
ELICP36	#11	35M	2.94"	0.5"	0.52"	0.44"	Blue
ELICP43	#14	45M	3.25"	0.5"	0.52"	0.44"	Red
ELICP57	#18	55M	4"	0.5"	0.52"	0.44"	Blue

NVENT LENTON PARALLEL PLASTIC SCREW-IN PLUG - PPP



- Designed for use with the P13/P14 Coupler families
- Designed to keep dirt, water and concrete slurry out of the coupler during the concrete pour
- Color coded for the appropriate coupler size

Part Number	Rebar Size, US	Rebar Size, Canada	Diameter (Ø)	Height (H)	Color
EL12PPPNB100	#4	10M	0.98"	0.51"	Red
EL16PPPNB100	#5	15M	1.18"	0.51"	Black
EL20PPPNB100	#6	20M	1.38"	0.63"	Yellow
EL22PPPNB100	#7		1.57"	0.63"	Blue
EL25PPPNB100	#8	25M	1.77"	0.63"	Red
EL28PPPNB50	#9	30M	1.97"	0.63"	Black
EL32PPPNB50	#10		2.36"	0.63"	Yellow
EL36PPPNB25	#11	35M	2.56"	0.63"	Blue
EL40PPPNB25			2.76"	0.63"	Green

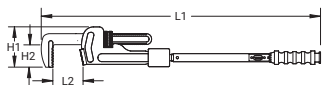
NVENT LENTON BAR END PROTECTOR - BEP



- Easy to install and remove
- Color coded for the appropriate reinforcing bar size

Part Number	Rebar Size, US	Rebar Size, Canada	Color
ELBEP12	#4	10M	Red
ELBEP16	#5	15M	Black
ELBEP20	#6	20M	Yellow
ELBEP22	#7		Blue
ELBEP25	#8	25M	Red
ELBEP28	#9	30M	Black
ELBEP32	#10		Yellow
ELBEP36	#11	35M	Blue
ELBEP43	#14	45M	Red
ELBEP57	#18	55M	Blue

NVENT LENTON INSPECTION WRENCH - ELT



- All wrenches are marked with unique serial numbers
- Setting of torque values is simple
- Used on multiple bar sizes

Part Number	Torque (TQ)	Rebar Size, US	Rebar Size, Canada	Length 1 (L1)	Length 2 (L2)	Height 1 (H1)	Height 2 (H2)	Unit Weight
ELT110F	200 ft-lbf Max	#3 - #57	10M - 55M	37"	3.5" Max	2"	4"	9.2 lb

A Look at nVent LENTON Concrete Reinforcement Products



nVent LENTON products for every application including: standard steel, durability coatings, stainless steel, cryogenic, corrosion resistant, and more.

WARNING

nVent products shall be installed and used only as indicated in nVent's product instruction sheets and training materials. Instruction sheets are available at nVent.com/LENTON and from your nVent customer service representative. Improper installation, misuse, misapplication or other failure to completely follow nVent's instructions and warnings may cause product malfunction, property damage, serious bodily injury and/or death, and void your warranty.



ACI is a registered trademark of the American Concrete Institute.

ASTM is a registered trademark of ASTM International.

IAPMO is a registered trademark of the International Association of Plumbing & Mechanical Officials.

IBC and ICC are registered trademarks of the International Code Council.

UBC (Uniform Building Code) is a registered trademark of the International Conference of Building Officials.

We reserve the right to make any alterations to the information contained in this brochure which we consider to be either necessary or advantageous. This brochure is designed to provide only preliminary information on the products and is not a contract. The Company does not accept any liability for loss or damage arising from failure to follow its instructions to products not agreed by it.

nVent LENTON is a world leader in advanced mechanical rebar splicing systems. Our Rebar Splicing Specialists understand the reinforced concrete business and inherent rebar splicing challenges on today's job sites. nVent LENTON offers a wide range of Mechanical Splices for a wide variety of construction needs:

- nVent LENTON Taper-Threaded Splicing Systems – Ideal alternative for high-volume hooked rebar anchorage
- Mechanical Anchors including nVent LENTON Terminator – Ideal alternative to hooked rebar anchorage
- nVent LENTON Ultimate Splicing Systems and Terminators – Ideal for high-strain, fatigue and nuclear performance requirements
- nVent LENTON Interlok Grout-Filled Precast Splicing System – Ideal for precast structures
- nVent LENTON Quick Wedge Lap Splicing System – Ideal for retrofit
- nVent LENTON Speed Sleeve Compression-Only Splices – Ideal for compression situations
- nVent LENTON Cadweld - Premier mechanical splicing system
- nVent LENTON Connect Shear Bolt Splicing System – Ideal for in-situ construction
- nVent LENTON Swaged Terminator – Ideal Alternative for high-volume anchors

As your rebar splicing specialist, nVent LENTON offers you the expertise you need for all your rebar splicing projects.

nVent Engineered Electrical & Fastening Solutions is a leading global manufacturer and marketer of superior engineered products for niche electrical, mechanical and concrete applications. These nVent products are sold globally under a variety of market-leading brands: nVent ERICO welded electrical connections, facility electrical protection, and rail and industrial products; nVent CADDY fixing, fastening and support products; nVent ILSCO low voltage power and grounding connections; and nVent LENTON engineered systems for concrete reinforcement. For more information on nVent ERICO, CADDY, ILSCO and LENTON, please visit nVent.com/LENTON.





North America

Tel +1.800.248.2677

LENTON-OrderSupportEast@nVent.com

LENTON-OrderSupportWest@nVent.com

Europe

Tel +311.35835100

lentonspecialistemea@nVent.com

Middle East

Tel +971.506.255.903

Africa

Tel +31.13.5385.440

Asia Pacific

Tel +61.2.9751.8500

Latin America

Tel +55.3686-9785

LA-cotizaciones@nVent.com

Australia

Tel +61.2.9751.8500

ausorders@nVent.com



Our powerful portfolio of brands:

CADDY

ERICO

HOFFMAN

ILSCO

RAYCHEM

SCHROFF