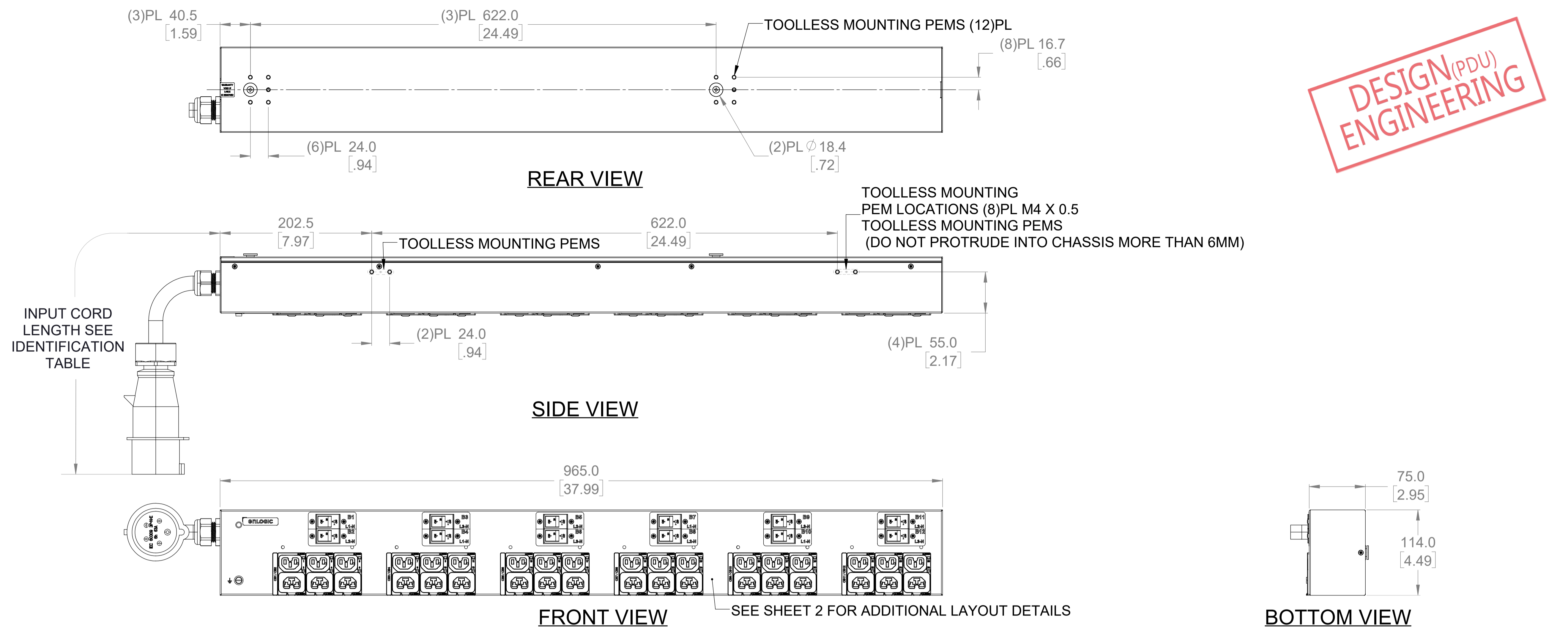


DESIGN^(PDU) ENGINEERING



TECHNICAL SPECIFICATIONS	
UNIT TYPE:	BASIC
ORIENTATION:	VERTICAL, 0U
OUTLET QTY & TYPE:	(18) C13/C15, (18)C13/C15/C19
INPUT VOLTAGE:	346-415VAC
INPUT CURRENT:	60A(48A DERATED)(NAM) / 63A (EU)
BREAKER QTY & TYPE:	(12) 20AMP, SINGLE-POLE 10KAIC
INPUT PHASE:	THREE-PHASE (WYE)
RATED POWER:	DUAL-RATED 34.6kVA(NAM) / 43.5kVA (EU)
INPUT PLUG:	SEE NOTE 7
INPUT POWER CORD:	SEE IDENTIFICATION TABLE
FEATURES	
METERING ACCURACY	NOT APPLICABLE
METERING ATTRIBUTES	NOT APPLICABLE
METERED COMPONENTS	NONE
REMOTE OUTLET SWITCHING	NO
ENVIRONMENTAL CONDITIONS	
OPERATING TEMPERATURE	-5 TO 60 C (23 TO 140 F)
STORAGE TEMPERATURE	-20 TO 60 C (-4 TO 140 F)
HUMIDITY (OPERATING/STORAGE)	5-90% RH / 5-95% RH; NON-CONDENSING
MAX OPERATING ELEVATION, ABOVE MSL	3000M (9840 FT)
COMPLIANCE	
SAFETY & ENVIRONMENTAL	IEC 62368-1 LISTED, CE, FCC, CSA, RoHS COMPLIANT

IDENTIFICATION TABLE	EB09JA - *	* INPUT PLUG	* CHASSIS COLOR	* CORD OPTION	* ORIENTATION
MODEL IS SHOWN IN DEFAULT CONFIGURATION. FOR OPTIONAL CONFIGURATIONS, USE ITEM IDENTIFIER CODE IN PLACE OF EACH ASTERISK. ORDERABLE BASED ON FORMAT: EB09JA - * * * *	(DEFAULT) 560P6 (IP44) = 0	(DEFAULT) BLACK = 0 BLUE = B RED = R WHITE = W GREEN = G YELLOW = Y	(DEFAULT) 1.8m [6"] = 0 1m [3.2"] = 1 2m [6.6"] = 2 3m [10"] = 3	(DEFAULT) TOP FEED = 0 BOTTOM FEED = 2	
OPTIONS LISTED ON THIS ROW ARE NON STANDARD, CONTACT SALES FOR ADDITIONAL INFORMATION	(OPTIONAL) 563P6W (IP67) = 1	ORANGE = A	0.5m [1.6"] = A 1.5m [4.9"] = B 2.5m [8.2"] = C 3.5m [11.4"] = D	4.5m [14.7"] = E 1.2m [4"] = G 3.65m [12"] = H 4m [13.2"] = 4	

- NOTES:**
- INSTALLATION SHALL COMPLY WITH ALL APPLICABLE NATIONAL, STATE AND LOCAL CODES.
 - PRIMARY DIMENSIONS ARE IN MILLIMETERS. SECONDARY DIMENSIONS ARE IN [INCHES]
 - UNIVERSAL MOUNTING BRACKET IS AN ALTERNATIVE MOUNTING METHOD TO THE TOOLLESS MOUNT FOR 3RD PARTY ENCLOSURES. BRACKET IS PROVIDED WITH THE UNIT.
 - DETAILED INSTALLATION INSTRUCTIONS CAN BE FOUND IN THE QUICK START GUIDE
 - CONNECT EXTERNAL EARTH GROUND TO THE 10-32 SIZE THREADED NUT
 - SEE PRODUCT DOCUMENTATION FOR FURTHER INFORMATION
 - INPUT PLUG CONFIGURATION (SEE IDENTIFICATION TABLE) FOR DUAL-RATED UNITS, NEMA PLUGS ARE NAM RATED ONLY AND CAPTIVE AUS/NZ PLUGS ARE EMEA RATED ONLY

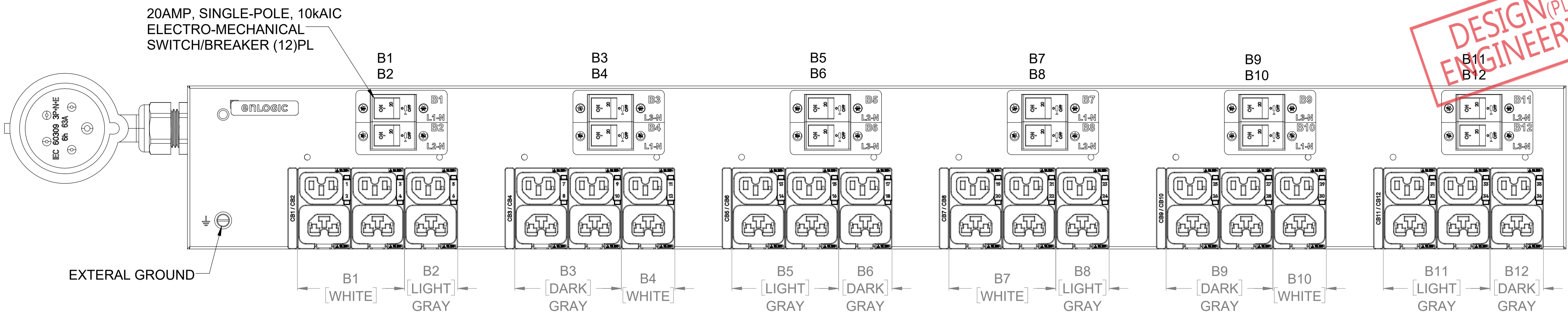
THIS DRAWING AND SPECIFICATIONS HEREIN ARE THE PROPERTY OF CIS GLOBAL AND SHALL NOT BE COPIED, REPRODUCED OR USED IN WHOLE OR IN PART, AS THE BASIS FOR THE MANUFACTURE OR SALE OF ITEMS WITHOUT WRITTEN PERMISSION FROM CIS GLOBAL. THIS DRAWING IS BASED UPON LATEST AVAILABLE INFORMATION AND IS SUBJECT TO CHANGE WITHOUT NOTICE

ECN/ECO	REV.	DESCRIPTION	DATE	APPROVED
	E1	INITIAL DRAFT REVIEW	2023/02/01	YAN
REVISIONS				
TITLE:		UNLESS NOTED, DIMENSIONS ARE IN MILLIMETERS & TOLERANCES ARE:	PART NO: EB09JA-WXYZ_DA	
PROJECT: enLOGIC		X. ±1 MM X° ±1°	REV. E1	
		X.X ±0.5 MM X.X° ±0.5°	DRAWN BY: YAN	
		X.XX ±0.20 MM	ENGINEER: LJB	
		∅X.X ±0.3 MM	APPROVED BY: Hanson	
		∅X.XX ±0.10 MM	SCALE: N/A	
		BRACKETED DIMENSIONS ARE IN INCHES FOR REFERENCE ONLY	SHEET 1 OF 3	
		⊕ THRID ANGLE PROJECTION	SIZE: A3	
		INTERPRET PER ASME Y14.5M-1994		

16 15 14 13 12 11 10 9 8 7 6 5 4 3 2 1

M L K J H G F E D C B A

**DESIGN^(PDU)
ENGINEERING**



STANDARD RECEPTACLES

RECEPTACLE

COMBO C13, C15
MAX RATED OUTPUT 10A, 250V

COMBO C13, C15, C19
MAX RATED OUTPUT 16A, 250V

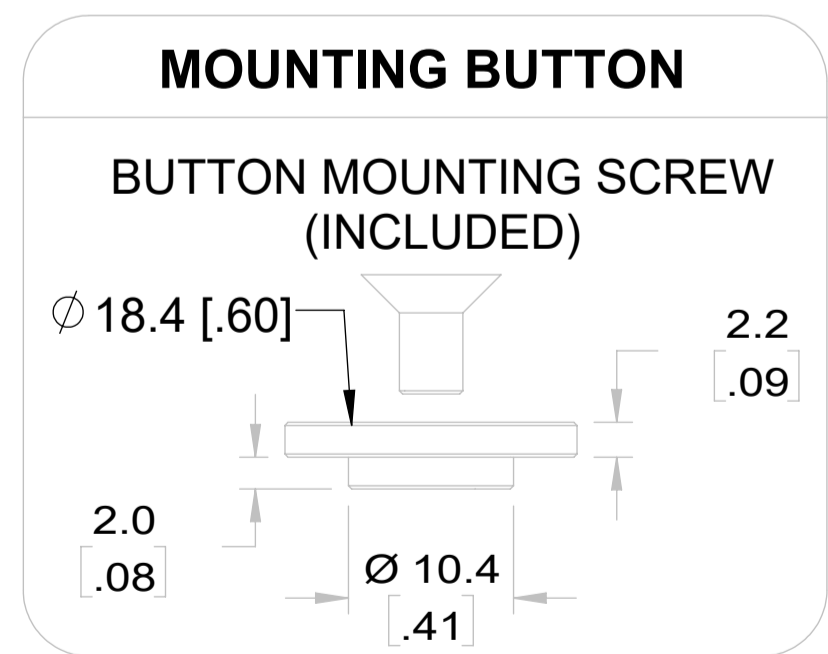
INPUT PLUG

(DEFAULT)

IEC 60309, 4P 5W, 6H
IP44 (SPLASHPROOF)
63A/60A, 415V MAX RATED INPUT
(48A DERATED)

OPTIONAL

IEC 60309, 4P 5W, 6H
IP67 (WATERTIGHT)
63A/60A, 415V MAX RATED INPUT
(48A DERATED)



NOTES:
 1. INSTALLATION SHALL COMPLY WITH ALL APPLICABLE NATIONAL, STATE AND LOCAL CODES.
 2. SEE PRODUCT DOCUMENTATION FOR FURTHER INFORMATION

enLOGIC by nvent

THIS DRAWING AND SPECIFICATIONS HEREIN ARE THE PROPERTY OF CIS GLOBAL AND SHALL NOT BE COPIED, REPRODUCED OR USED IN WHOLE OR IN PART, AS THE BASIS FOR THE MANUFACTURE OR SALE OF ITEMS WITHOUT WRITTEN PERMISSION FROM CIS GLOBAL. THIS DRAWING IS BASED UPON LATEST AVAILABLE INFORMATION AND IS SUBJECT TO CHANGE WITHOUT NOTICE

	E1	INITIAL DRAFT REVIEW	2023/02/01	YAN
ECN/ECO	REV.	DESCRIPTION	DATE	APPROVED
REVISIONS				
TITLE:		UNLESS NOTED, DIMENSIONS ARE IN MILLIMETERS & TOLERANCES ARE: X. ±1 MM X° ±1° X.X ±0.5 MM X.X° ±0.5° X.XX ±0.20 MM ØX.X ±0.3 MM ØX.XX ±0.10 MM BRACKETED DIMENSIONS ARE IN INCHES FOR REFERENCE ONLY THRID ANGLE PROJECTION INTERPRET PER ASME Y14.5M-1994	PART NO: EB09JA-WXYZ_DA	
PROJECT: enLOGIC			REV. E1	
		DRAWN BY: YAN		2023/02/01
		ENGINEER: LJB		2023/02/01
		APPROVED BY: Hanson		2023/02/01
			SCALE: N/A	
				SHEET 2 OF 3
				A3

16 15 14 13 12 11 10 9 8 7 6 5 4 3 2 1

enLOGIC RACK Power Distribution Unit
Basic

SKU #: EB09JA-WXYZ
Model #: EP402048-0066-C(NA)/EP402063-0066-C(EU)
INPUT: 200-240/346-415VAC, WYE, 3PHASE, 50/60Hz, 48A(NA), OR 200-240/346-415VAC, WYE, 3PHASE, 50/60Hz, 63A(EU)
OUTPUT: C13/C15 COMBO: 200-240VAC, 10A per outlet
C13/C15/C19 COMBO: 200-240VAC, 16A max per outlet
48A Total(NA) OR 63A Total(EU)

Made In China

CE UK CA
CIS Global LLC
1801 W COMMERCE
SUITE 1000
AZ 85746

SKU#: EB09JA-WXYZ

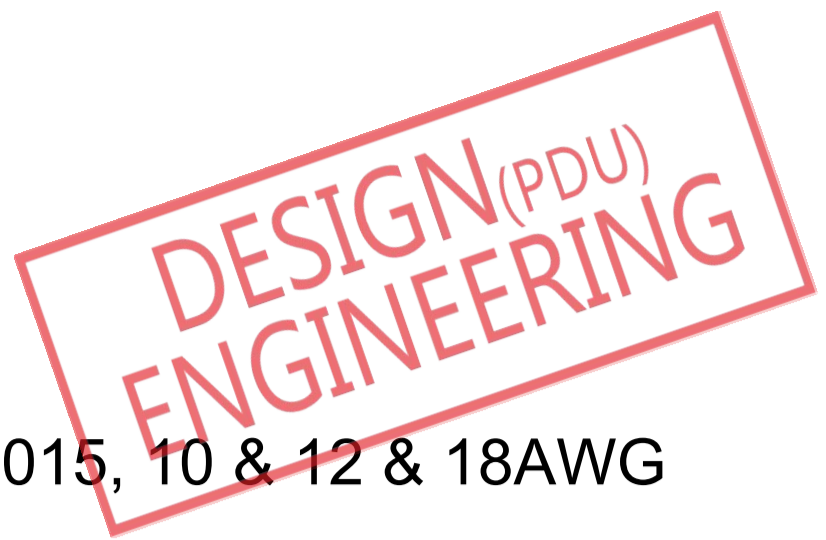
Serial Number
XXXXXXXXXX

COMPLIANCE LABEL

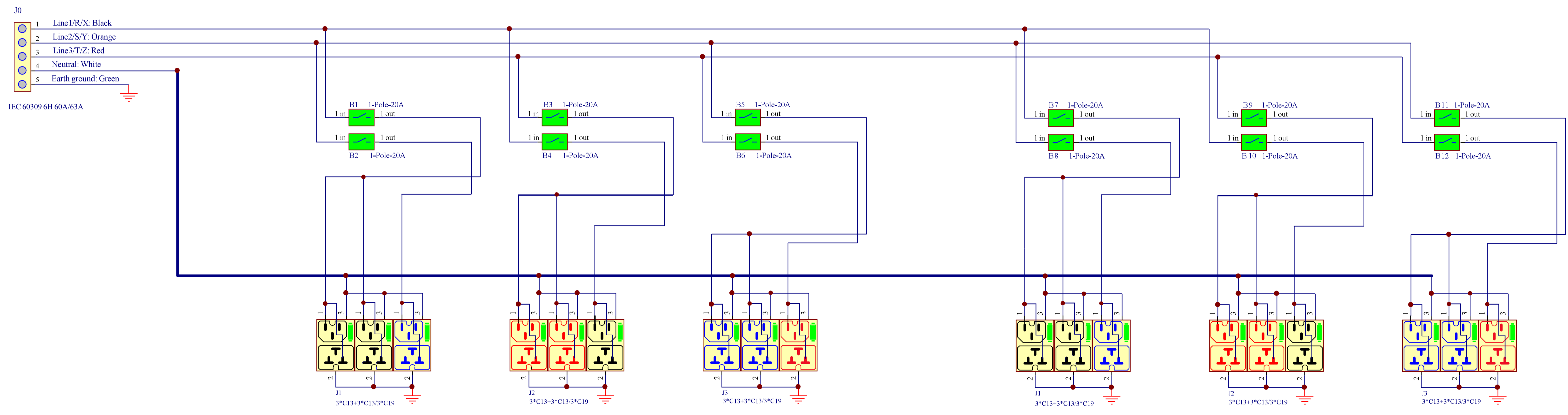
NOTES:

1.INTERNAL WIRING

WIRE TYPE: UL AWM 1015, 10 & 12 & 18AWG
 LINE 1/R/X COLOR: BLACK
 LINE 2/S/Y COLOR: ORANGE
 LINE 3/T/Z COLOR: RED
 NEUTRAL COLOR: WHITE
 EARTH GROUND COLOR: GREEN STRIPE



2.FOR FINISHED GOOD PART NUMBER SEE IDENTIFICATION



INTERNAL WIRING SCHEMATIC DIAGRAM

- NOTES:**
1. INSTALLATION SHALL COMPLY WITH ALL APPLICABLE NATIONAL, STATE AND LOCAL CODES.
 2. SEE PRODUCT DOCUMENTATION FOR FURTHER INFORMATION
 3. THIS DRAWING DEPICTS THE POWER SYSTEM CONNECTIONS AND IS NOT REPRESENTATIVE OF THE PHYSICAL LAYOUT. PLEASE REFER TO MECHANICAL DRAWINGS FOR PHYSICAL LAYOUT.

enLOGIC by nvent

THIS DRAWING AND SPECIFICATIONS HEREIN ARE THE PROPERTY OF CIS GLOBAL AND SHALL NOT BE COPIED, REPRODUCED OR USED IN WHOLE OR IN PART, AS THE BASIS FOR THE MANUFACTURE OR SALE OF ITEMS WITHOUT WRITTEN PERMISSION FROM CIS GLOBAL. THIS DRAWING IS BASED UPON LATEST AVAILABLE INFORMATION AND IS SUBJECT TO CHANGE WITHOUT NOTICE

	E1	INITIAL DRAFT REVIEW	2023/02/01	YAN
ECN/ECO	REV.	DESCRIPTION	DATE	APPROVED
REVISIONS				
TITLE:	ADVANTAGE SERIES BASIC		PART NO:	REV.
PROJECT:	enLOGIC		EB09JA-WXYZ_DA	E1
UNLESS NOTED, DIMENSIONS ARE IN MILLIMETERS & TOLERANCES ARE:			DRAWN BY:	2023/02/01
X. ±1 MM X° ±1°			ENGINEER:	2023/02/01
X.X ±0.5 MM X.X° ±0.5°			APPROVED BY:	2023/02/01
X.XX ±0.20 MM			SCALE: N/A	
Ø X.X ±0.3 MM			SIZE:	
Ø X.XX ±0.10 MM			3 OF 3	
BRACKETED DIMENSIONS ARE IN INCHES FOR REFERENCE ONLY			A3	
THRID ANGLE PROJECTION				
INTERPRET PER ASME Y14.5M-1994				