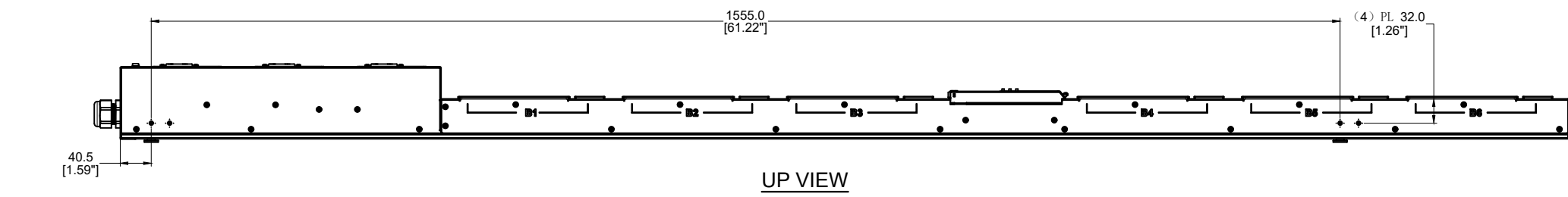
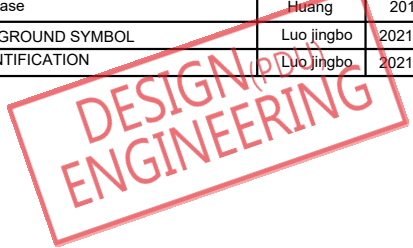
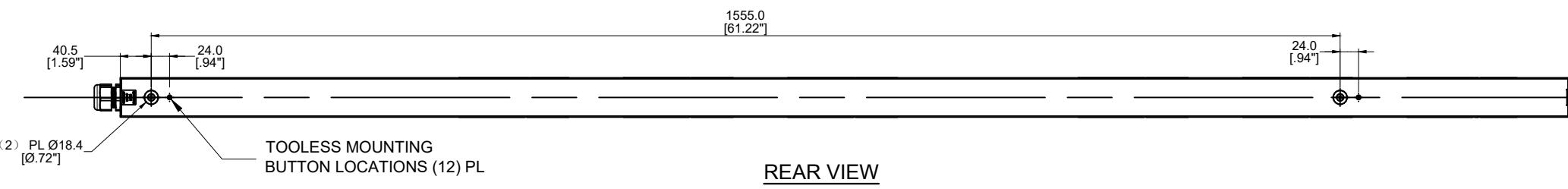


THE INFORMATION CONTAINED IN THIS DRAWING IS THE SOLE PROPERTY OF CIS. ANY REPRODUCTION IN PART OR WHOLE WITHOUT WRITTEN PERMISSION OF CIS IS PROHIBITED.

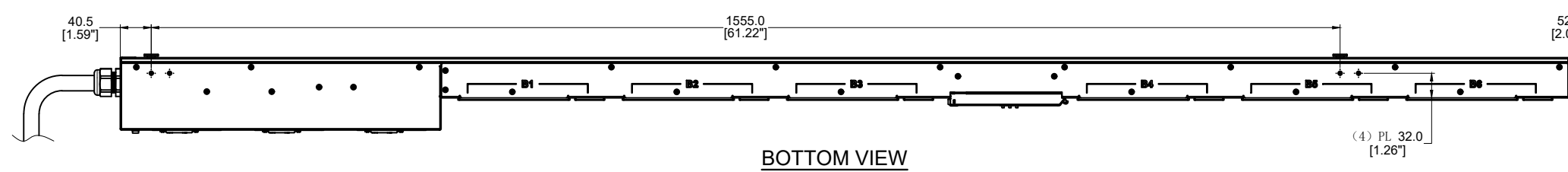
REVISIONS					
ECN/ECO	PLACES	REV.	DESCRIPTION	SIGN	DATE
		E1	Design Release	Huang	2019.9.6
CIS-ECN-2101-0046		E2	SHEET FORMAT UPDATE, ADD GROUND SYMBOL	Luo jingbo	2021-01-25
CIS-ECN-2303-0063		E3	UPDATE PLUG IDENTIFICATION	Luo jingbo	2021-02-18



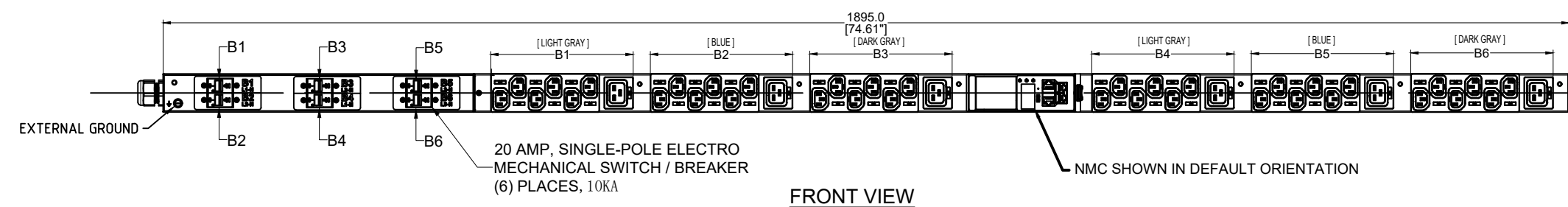
UP VIEW



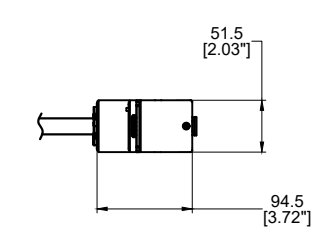
REAR VIEW



BOTTOM VIEW



FRONT VIEW



RIGHT VIEW

PLUG/RECEPTACLE BLOCK

PLUG
IEC 60309, 4P 5W, 6H
IP44 (SPLASHPROOF)
30A, 346-415V MAX RATED INPUT
24A DERATED

RECEPTACLES
IEC 60320/C19
16A, 250V MAX RATED OUTPUT

RECEPTACLES
IEC 60320/C13
10A, 250V MAX RATED OUTPUT

SPECIFICATION:

UNIT TYPE: MONITORED INPUT
ORIENTATION: VERTICAL, 0U FULL
OUTLET QTY & TYPE: (36)C13, (6) C19
INPUT VOLTAGE: 200-240/346-415VAC
INPUT CURRENT: 30A (24A DERATED)
BREAKER QTY & TYPE: (6) 20AMP, SIGLE-POLE, 10KAIC
INPUT PHASE: THREE-PHASE, WYE
RATED POWER: 17.3 kVA
INPUT PLUG: SEE IDENTIFICATION TABLE
INPUT POWER CORD: SEE IDENTIFICATION TABLE
REGULATORY STANDARD: RoHS COMPLIANT

IDENTIFICATION TABLE
EN1815-WXYZ

W	X	Y	Z
(DEFAULT) 530P6 IP44 = 0 530P6W IP67 = T L22-30P = U	(DEFAULT) BLACK = 0 BLUE = B RED = R WHITE = W GREEN = G YELLOW = Y ORANGE = A	(DEFAULT) 3m = 0 1m = 1 2m = 2 0.5m = A 1.5m = B 2.5m = C 1.2m[4'] = G 1.8m[6'] = F	(DEFAULT) TOP FEED = 0 BOTTOM FEED = 2

MODEL IS SHOWN IN STANDARD DEFAULT CONFIGURATION
SEE IDENTIFICATION TABLE FOR OPTIONAL CONFIGURATIONS
ORDERABLE BASED ON SKU NUMBER WITH DASH SUFFIX

- NOTES:**
- PRIMARY DIMENSIONS ARE IN MILLIMETERS. SECONDARY DIMENSIONS ARE IN [INCHES]
 - SEE PRODUCT OVERVIEW AND SPECIFICATIONS SHEET FOR FURTHER INFORMATION
STANDARD INPUT POWER CORD LENGTH IS 3000MM[118.0IN]
 - DETAILED INSTALLATION INSTRUCTIONS CAN BE FOUND IN THE QUICK START GUIDE
 - BRACKET KITS TO MOUNT TO SPECIFIC RACKS & ENCLOSURES ARE AVAILABLE AS OPTIONS
 - CONNECT SUPPLEMENTARY EXTERNAL EARTH GROUND TO THE 10-32 SIZE THREADED NUT

UNLESS NOTED, DIMENSIONS IN MILLIMETERS & TOLERANCES ARE:		DESIGNER & DATE:		CISGLOBAL
X, ± 1 MM	X°, ± 1°	Huang	2019-9-6	
X.X ± 0.5 MM	X.X° ± 0.5°	STANDARDIZATION/CHECKER & DATE:		
X.XX ± 0.20 MM		Aric Wang	2021-02-18	
ØX.X ± 0.4 MM		DFM & DATE:		
ØX.XX ± 0.20 MM		Talon Lv	2021-02-18	
BRACKETED DIMENSIONS ARE IN INCHES FOR REFERENCE ONLY		APPROVER & DATE:		
THIRD ANGLE PROJECTION		Hanson Xu	2021-02-18	
IF 2D AND 3D DIFFER, 2D SHALL TAKE PRECEDENCE		ITEM WEIGHT (REFERENCE ONLY):		
		MATERIAL:		
		Assembly		
DESCRIPTION: EN2.0 PDU			REV: E3	
P/N: EN1815-WXYZ_DA				
SCALE: N/A	SIZE: N/A	SHEET 1 OF 2		

THE INFORMATION CONTAINED IN THIS DRAWING IS THE SOLE PROPERTY OF CIS. ANY REPRODUCTION IN PART OR WHOLE WITHOUT WRITTEN PERMISSION OF CIS IS PROHIBITED.

**DESIGN (PDU)
ENGINEERING**

enLOGIC

SKU #: EN1815-WXYZ
Model #: EP12024-0016
INPUT: 200-240/346-415VAC, WYE, 3PHASE, 50/60Hz, 24A
OUTPUT: C13; 200-240VAC, 10A per outlet
C19; 200-240VAC, 16A per outlet
24A Total
Mac0 Address: XX-XX-XX-XX-XX-XX
Mac1 Address: XX-XX-XX-XX-XX-XX

Power Distribution Unit

THIS DEVICE COMPLIES WITH PART 15 OF THE FCC RULES. OPERATION IS SUBJECT TO THE FOLLOWING TWO CONDITIONS:
(1) THIS DEVICE MAY NOT CAUSE HARMFUL INTERFERENCE, AND (2) THIS DEVICE MUST ACCEPT ANY INTERFERENCE RECEIVED, INCLUDING INTERFERENCE THAT MAY CAUSE UNDESIRABLE OPERATION.
CAN ICES-3(A)/NMB-3(A)

Serial Number: xxxxxxxxxx
Made in xxxxx
(Factory ID: A)
Mfr.Name:XXXXXXXXXXXXXXXXXXXXXXXXXXXX

SKU#:

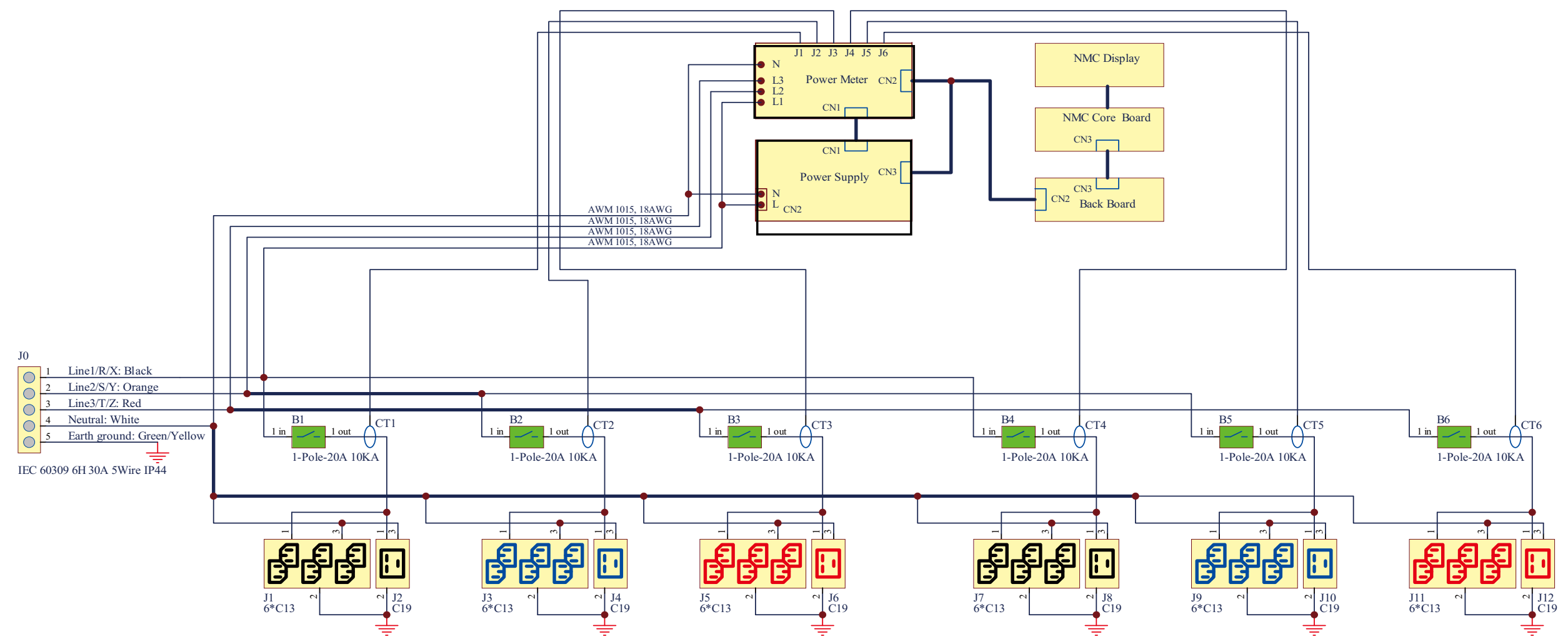
EN1815-WXYZ

xxxxxxx

NOTES:
1. INTERNAL WIRING:
WIRE TYPE: UL AWM 1015, 10&12&18AWG
LINE 1/R/X COLOR: BLACK
LINE 2/S/Y COLOR: ORANGE
LINE 3/T/Z COLOR: RED
EARTH GROUND COLOR: GREEN/YELLOW STRIPE

2. FOR FINISHED GOOD PART NUMBER SEE IDENTIFICATION

COMPLIANCE LABEL



INTERNAL WIRING SCHEMATIC

<p>UNLESS NOTED, DIMENSIONS IN MILLIMETERS & TOLERANCES ARE:</p> <table style="font-size: small;"> <tr><td>X</td><td>± 1</td><td>MM</td></tr> <tr><td>X.X</td><td>± 0.5</td><td>MM</td></tr> <tr><td>X.XX</td><td>± 0.20</td><td>MM</td></tr> <tr><td>ØX.X</td><td>± 0.4</td><td>MM</td></tr> <tr><td>ØX.XX</td><td>± 0.20</td><td>MM</td></tr> </table> <p>BRACKETED DIMENSIONS ARE IN INCHES FOR REFERENCE ONLY</p>	X	± 1	MM	X.X	± 0.5	MM	X.XX	± 0.20	MM	ØX.X	± 0.4	MM	ØX.XX	± 0.20	MM	<p>DESIGNER & DATE: Huang 2019-9-6</p>	<h1 style="margin: 0;">CISGLOBAL</h1>	<p>DESCRIPTION: EN2.0 PDU</p>
	X	± 1	MM															
	X.X	± 0.5	MM															
	X.XX	± 0.20	MM															
ØX.X	± 0.4	MM																
ØX.XX	± 0.20	MM																
<p>STANDARDIZATION/CHECKER & DATE: Aric Wang 2021-02-18</p>	<p>DFM & DATE: Talon Lv 2021-02-18</p>	<p>PIN: EN1815-WXYZ_DA</p>	<p>REV: E3</p>															
<p>APPROVER & DATE: Hanson Xu 2021-02-18</p>	<p>ITEM WEIGHT (REFERENCE ONLY):</p>																	
<p>THIRD ANGLE PROJECTION</p>	<p>MATERIAL: Assembly</p>	<p>SCALE: N/A</p>	<p>SIZE: N/A</p>	<p>SHEET 2 OF 2</p>														