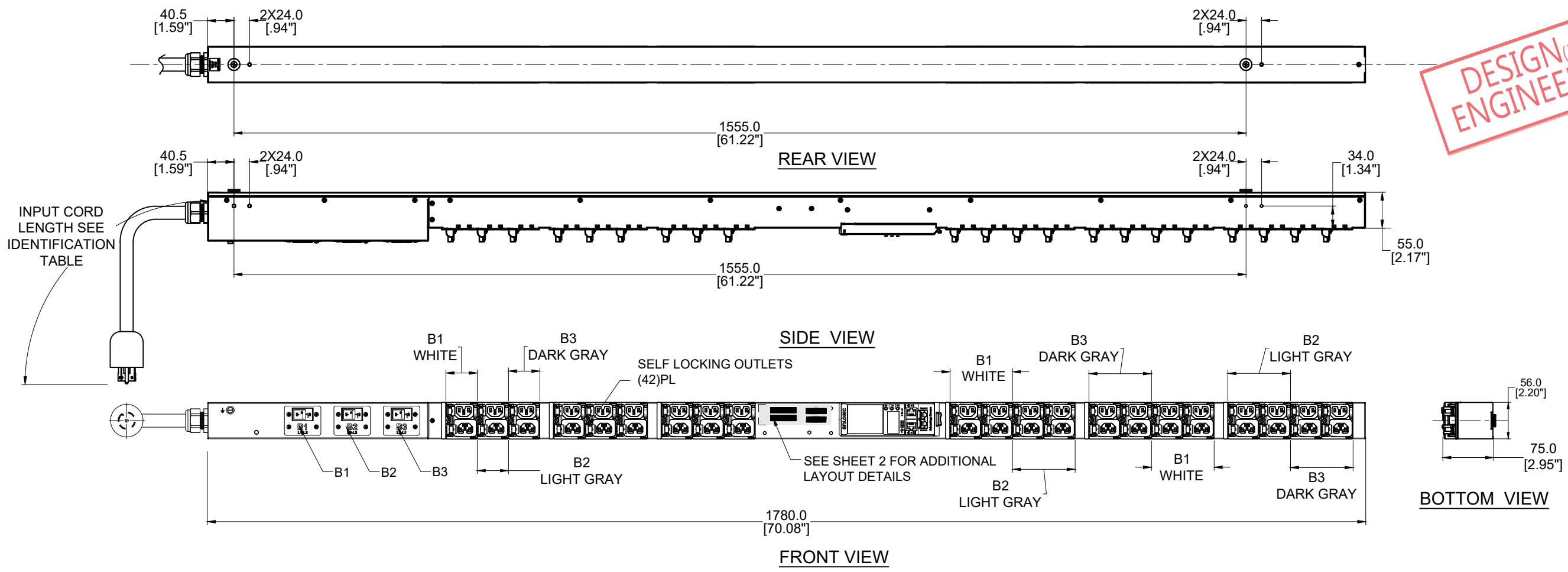


DESIGN(PDU)  
ENGINEERING



TECHNICAL SPECIFICATIONS	
UNIT TYPE:	MONITORED INPUT
ORIENTATION:	VERTICAL, 0U FULL
OUTLET QTY & TYPE:	(21)C13/C15 LOCKING, (21)C13/C15/C19 LOCKING
INPUT VOLTAGE:	200-240/346-415VAC
INPUT CURRENT:	30A (24A DERATED)
BREAKER QTY & TYPE:	(3) 20AMP, DOUBLE-POLE, 5KAIC
INPUT PHASE:	THREE-PHASE, DELTA
RATED POWER:	8.6 KVA
INPUT PLUG:	SEE NOTE 7
INPUT POWER CORD:	SEE IDENTIFICATION TABLE
FEATURES	
METERING ACCURACY	+1% TO ISO/ IEC 62052-21
METERING ATTRIBUTES	VOLTAGE(V), CURRENT(A), APPARENT POWER(KVA), REAL POWER(KW), POWER FACTOR, ENERGY(kWh)
METERED COMPONENTS	INPUT(PHASE), CIRCUIT BREAKERS
REMOTE OUTLET SWITCHING	N/A
ENVIRONMENTAL CONDITIONS	
OPERATING TEMPERATURE	-5 TO 60 C (23 TO 140 F)
STORAGE TEMPERATURE	-20 TO 60 C (-4 TO 140 F)
HUMIDITY (OPERATING/STORAGE)	5-90% RH / 5-95% RH; NON-CONDENSING
MAX OPERATING ELEVATION, ABOVE MSL	3000M(9840FT)
COMPLIANCE	
SAFETY&ENVIRONMENTAL	RoHS COMPLIANT

IDENTIFICATION TABLE	EN1881-*	* INPUT PLUG	* CHASSIS COLOR	* CORD OPTION	* ORIENTATION
MODEL IS SHOWN IN DEFAULT CONFIGURATION. FOR OPTIONAL CONFIGURATIONS, USE ITEM IDENTIFIER CODE IN PLACE OF EACH ASTERISK. ORDERABLE BASED ON FORMAT: EN 1881-****		(DEFAULT) L21-30P = 0 L15-30P = S	(DEFAULT) BLACK = 0 BLUE = B RED = R GREEN = G WHITE = W YELLOW = Y	(DEFAULT) 1.8m [6'] = 0 1m [3.2'] = 1 2m [6.6'] = 2 3m [10'] = 3	(DEFAULT) TOP FEED = 0 BOTTOM FEED = 2
OPTIONS LISTED ON THIS ROW ARE NON STANDARD, CONTACT SALES FOR ADDITIONAL INFORMATION			ORANGE = A	0.5m [1.6'] = A 1.5m [4.9'] = B 2.5m [8.2'] = C	1.2m [4'] = G 1.8m [6'] = F

- NOTES :**
- INSTALLATION SHALL COMPLY WITH ALL APPLICABLE NATIONAL, STATE AND LOCAL CODES.
  - PRIMARY DIMENSIONS ARE IN MILLIMETERS. SECONDARY DIMENSIONS ARE IN [INCHES]
  - UNIVERSAL MOUNTING BRACKET IS AN ALTERNATIVE MOUNTING METHOD TO THE TOOLLESS MOUNT FOR 3RD PARTY ENCLOSURES. BRACKET IS PROVIDED WITH THE UNIT.
  - DETAILED INSTALLATION INSTRUCTIONS CAN BE FOUND IN THE QUICK START GUIDE
  - CONNECT EXTERNAL EARTH GROUND TO THE 10-32 SIZE THREADED NUT
  - SEE PRODUCT DOCUMENTATION FOR FURTHER INFORMATION
  - INPUT PLUG CONFIGURATION (SEE IDENTIFICATION TABLE) FOR DUAL-RATED UNITS, NEMA PLUGS ARE NAM RATED ONLY AND CAPTIVE AUS/NZ PLUGS ARE EMEA RATED ONLY

ECN/ECO	REV.	DESCRIPTION	DATE	APPROVED
	E1	INITIAL DRAFT REVIEW	2023/04/19	Leo Liu

REVISIONS		PART NO:	REV.
TITLE : Advantage Series Metered		EN1881-WXYZ_DA	E1
PROJECT : enLOGIC		DRAWN BY: Leo Liu	2023/04/19
		ENGINEER: Luo Jingbo	2023/04/19
		APPROVED BY: Hanson	2023/04/13
		SCALE : N/A	SHEET 1 OF 3
			SIZE: A3

**enLOGIC** by nvent

THIS DRAWING AND SPECIFICATIONS HEREIN ARE THE PROPERTY OF CIS GLOBAL AND SHALL NOT BE COPIED, REPRODUCED OR USED IN WHOLE OR IN PART, AS THE BASIS FOR THE MANUFACTURE OR SALE OF ITEMS WITHOUT WRITTEN PERMISSION FROM CIS GLOBAL. THIS DRAWING IS BASED UPON LATEST AVAILABLE INFORMATION AND IS SUBJECT TO CHANGE WITHOUT NOTICE

UNLESS NOTED, DIMENSIONS ARE IN MILLIMETERS & TOLERANCES ARE:

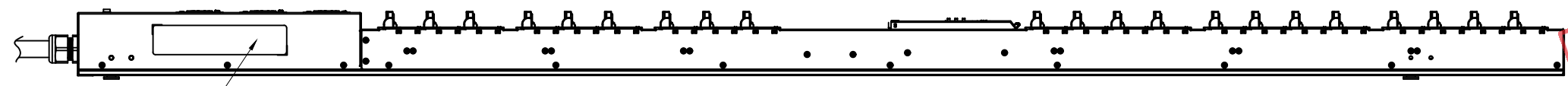
X	±1 MM	X°	±1°
X.X	±0.5 MM	X.X°	±0.5°
X	±0.20 MM		
Ø X.X	±0.3 MM		
Ø X.XX	±0.10 MM		

BRACKETED DIMENSIONS ARE IN INCHES FOR REFERENCE ONLY

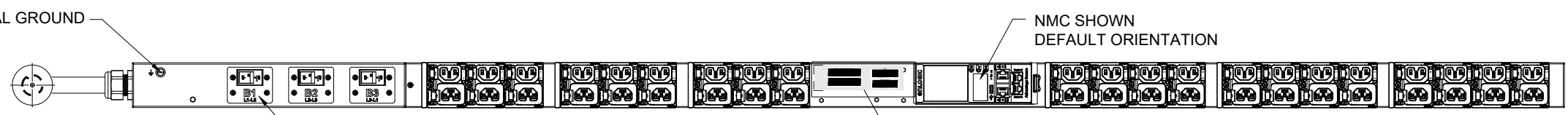
⊕ THRID ANGLE PROJECTION

INTERPRET PER ASME Y14.5M-1994

**DESIGN (PDU)  
ENGINEERING**



SIDE VIEW

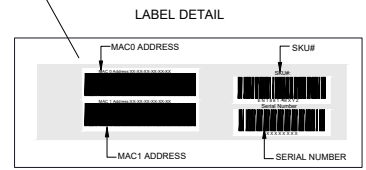


FRONT VIEW

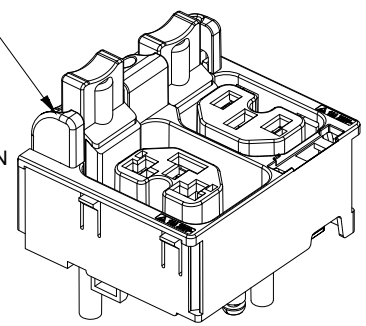
EXTERNAL GROUND

NMC SHOWN  
DEFAULT ORIENTATION

20AMP, DOUBLE-POLE ELECTRO  
MECHANICAL SWITCH/BREAKER  
(3) PLACES

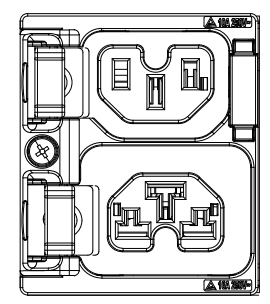


FULLY DEPRESS RELEASE BUTTON  
TO INSTALLING PLUG FOR EASIEST INSTALL  
  
(PLUG CAN ALSO BE INSERTED WITHOUT  
DEPRESSING RELEASE BUTTON)  
  
TO UNLOCK, FULLY DEPRESS RELEASE BUTTON  
AND REMOVE PLUG



LOCKING COMBO OUTLET

STANDARD  
RECEPTACLES

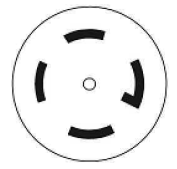


RECEPTACLE

IEC 60320 C13, C15  
MAX RATED OUTPUT 10A, 250V  
  
IEC 60320 C13, C15, C19, C21  
MAX RATED OUTPUT 16A, 250V

INPUT PLUG

(DEFAULT)

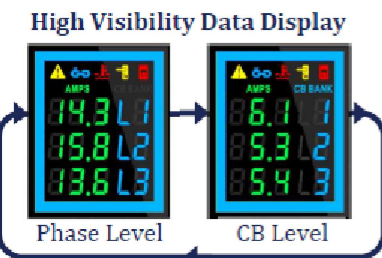


NEMA L21-30P, 4P 5W  
30A, 120/208V MAX RATED  
INPUT 24A DERATED

OPTIONAL



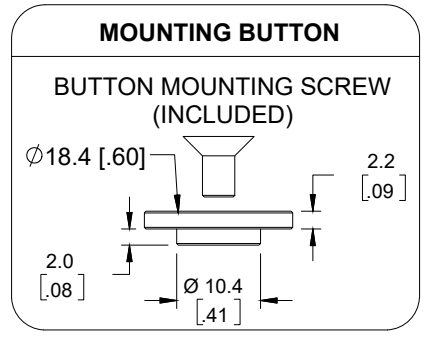
NEMA L15-30P, 3P 4W  
30A, 250V, 3-PHASE MAX RATED  
INPUT 24A DERATED



High Visibility Data Display  
  
Phase Level    CB Level  
  
USB-C  
(upgrades, connectivity, and  
future-proof expansion)  
  
10/100/Gigabit Ethernet Port  
(primary network port)  
  
Digital Sensor Port 1  
(supports up to 8 physical  
sensors)



Critical Alarm Alerts  
 ▲ PDU Alarm  
 ● Cascade Error  
 ● Environmental Alarm  
 ● Security Alarm  
 ● Circuit Breaker Alarm  
 Source Color Coding  
(User Selected Option)  
 User Interactive Display  
(for setup and detailed information)  
 10/100 Ethernet Port  
(for redundancy and Ethernet  
cascading)  
 Digital Sensor Port 2



NOTES:  
1. INSTALLATION SHALL COMPLY WITH ALL APPLICABLE NATIONAL, STATE AND LOCAL CODES.  
2. SEE PRODUCT DOCUMENTATION FOR FURTHER INFORMATION

**enLOGIC** by nvent

THIS DRAWING AND SPECIFICATIONS HEREIN ARE THE PROPERTY OF CIS GLOBAL AND SHALL NOT BE COPIED, REPRODUCED OR USED IN WHOLE OR IN PART, AS THE BASIS FOR THE MANUFACTURE OR SALE OF ITEMS WITHOUT WRITTEN PERMISSION FROM CIS GLOBAL. THIS DRAWING IS BASED UPON LATEST AVAILABLE INFORMATION AND IS SUBJECT TO CHANGE WITHOUT NOTICE

ECN/ECO	REV.	DESCRIPTION	DATE	APPROVED
	E1	INITIAL DRAFT REVIEW	2023/04/19	Leo Liu
REVISIONS				
TITLE:		UNLESS NOTED, DIMENSIONS ARE IN MILLIMETERS & TOLERANCES ARE:		PART NO:
PROJECT:		X ±1 MM    X° ±1°		EN1881-WXYZ_DA
		X.X ±0.5 MM    X.X° ±0.5°		REV. E1
		X ±0.20 MM		DRAWN BY: Leo Liu
		Ø X.X ±0.3 MM		ENGINEER: Luo Jingbo
		Ø X.XX ±0.10 MM		APPROVED BY: Hanson
		BRACKETED DIMENSIONS ARE IN INCHES FOR REFERENCE ONLY		SCALE: N/A
		THIRD ANGLE PROJECTION		SHEET 2 OF 3
		INTERPRET PER ASME Y14.5M-1994		SIZE: A3

**enLOGIC** RACK Power Distribution Unit Metered Made In XXXXX

SKU #: EN1881-WXYZ  
 Model #: EP116024-0071-L  
 INPUT: 100-120/200-240VAC, WYE, 3PHASE, 50/60Hz, 24A  
 OUTPUT: C13/C15 LOCKING; 200-240VAC, 10A per outlet  
 C13/C15/C19 LOCKING; 200-240VAC, 16A max per outlet  
 24A Total  
 MAC0 Address:XX-XX-XX-XX-XX-XX  
 MAC1 Address:XX-XX-XX-XX-XX-XX

FC C SP US 300805

Serial Number: XXXXXXXXXX

THIS DEVICE COMPLIES WITH PART 15 OF THE FCC RULES. OPERATION IS SUBJECT TO THE FOLLOWING TWO CONDITIONS: (1) THIS DEVICE MAY NOT CAUSE HARMFUL INTERFERENCE, AND (2) THIS DEVICE MUST ACCEPT ANY INTERFERENCE RECEIVED, INCLUDING INTERFERENCE THAT MAY CAUSE UNDESIRABLE OPERATION. CAN ICES-3(A)/NMB-3(A)

Input Plug: L21-30P

**enLOGIC** RACK Power Distribution Unit Metered Made In XXXXX

SKU #: EN1881-SXYZ  
 Model #: EP114024-0071-L  
 INPUT: 200-240VAC, DELTA, 3PHASE, 50/60Hz, 24A  
 OUTPUT: C13/C15 LOCKING; 200-240VAC, 10A per outlet  
 C13/C15/C19 LOCKING; 200-240VAC, 16A max per outlet  
 24A Total  
 MAC0 Address:XX-XX-XX-XX-XX-XX  
 MAC1 Address:XX-XX-XX-XX-XX-XX

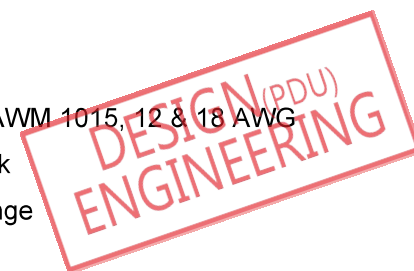
FC C SP US 300805

Serial Number: XXXXXXXXXX

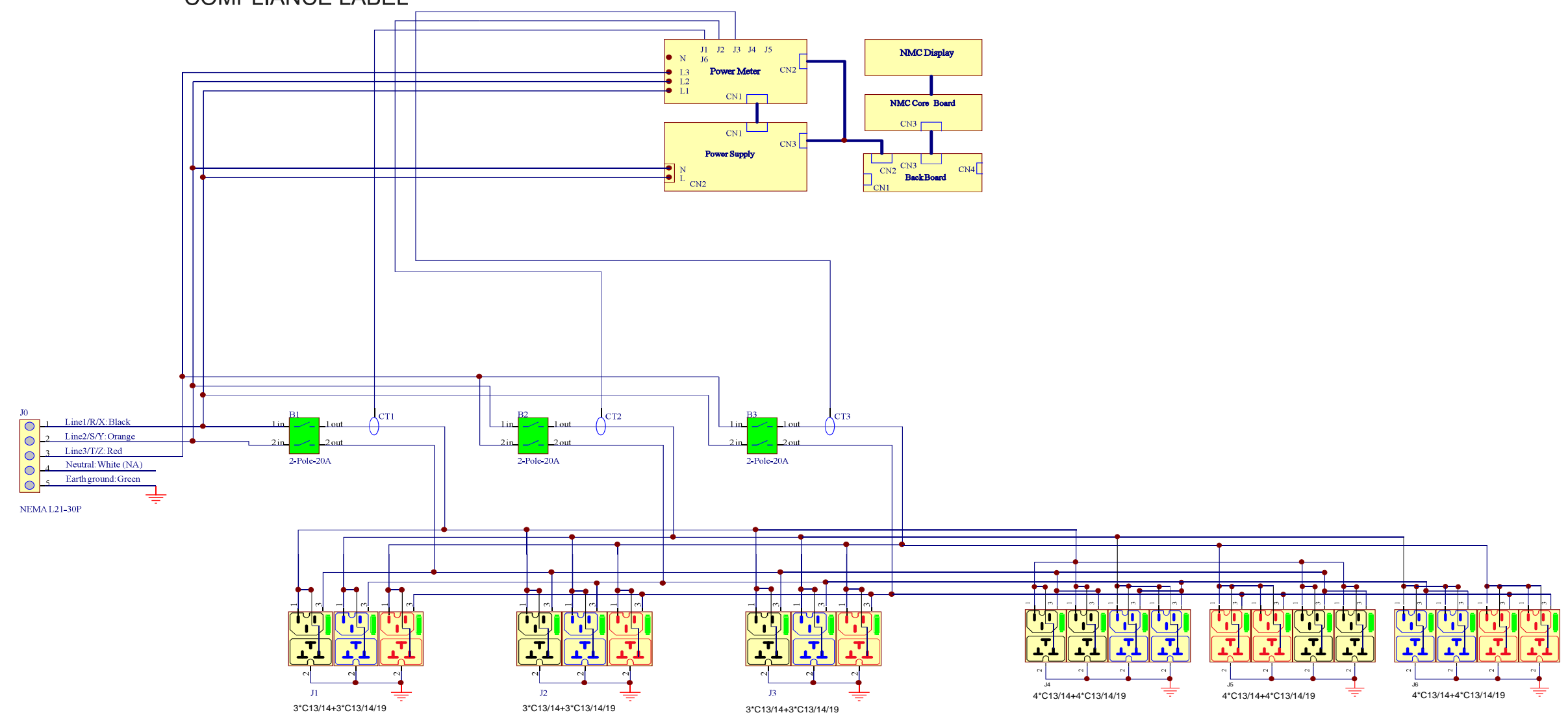
THIS DEVICE COMPLIES WITH PART 15 OF THE FCC RULES. OPERATION IS SUBJECT TO THE FOLLOWING TWO CONDITIONS: (1) THIS DEVICE MAY NOT CAUSE HARMFUL INTERFERENCE, AND (2) THIS DEVICE MUST ACCEPT ANY INTERFERENCE RECEIVED, INCLUDING INTERFERENCE THAT MAY CAUSE UNDESIRABLE OPERATION. CAN ICES-3(A)/NMB-3(A)

Input Plug: L15-30P

- NOTES:
- INTERNAL WIRING WIRE TYPE: UL AWM 1015, 12 & 18 AWG
  - FOR FINISHED GOOD PART NUMBER SEE IDENTIFICATION
- LINE 1/R/X COLOR: Black  
 LINE 2/S/Y COLOR: Orange  
 LINE 3/T/Z COLOR: Red  
 NEUTRAL COLOR: White (NA)  
 EARTH GROUND COLOR: Green



COMPLIANCE LABEL



INTERNAL WIRING SCHEMATIC DIAGRAM

- NOTES:
- INSTALLATION SHALL COMPLY WITH ALL APPLICABLE NATIONAL, STATE AND LOCAL CODES.
  - SEE PRODUCT DOCUMENTATION FOR FURTHER INFORMATION.
  - THIS DRAWING DEPICTS THE POWER SYSTEM CONNECTIONS AND IS NOT REPRESENTATIVE OF THE PHYSICAL LAYOUT. PLEASE REFER TO MECHANICAL DRAWINGS FOR PHYSICAL LAYOUT.

**enLOGIC** by nvent

THIS DRAWING AND SPECIFICATIONS HEREIN ARE THE PROPERTY OF CIS GLOBAL AND SHALL NOT BE COPIED, REPRODUCED OR USED IN WHOLE OR IN PART, AS THE BASIS FOR THE MANUFACTURE OR SALE OF ITEMS WITHOUT WRITTEN PERMISSION FROM CIS GLOBAL. THIS DRAWING IS BASED UPON LATEST AVAILABLE INFORMATION AND IS SUBJECT TO CHANGE WITHOUT NOTICE

E1	INITIAL DRAFT REVIEW	2023/04/19	Leo Liu
ECN/ECO	REV.	DESCRIPTION	DATE APPROVED
REVISIONS			
TITLE :		UNLESS NOTED, DIMENSIONS ARE IN MILLIMETERS & TOLERANCES ARE:	PART NO: EN1881-WXYZ_DA
PROJECT :		X ±1 MM X° ±1° X.X ±0.5 MM X.X° ±0.5° X ±0.20 MM Ø X.X ±0.3 MM Ø X.XX ±0.10 MM	REV. E1
		BRACKETED DIMENSIONS ARE IN INCHES FOR REFERENCE ONLY	DRAWN BY: Leo Liu 2023/04/19
		THIRD ANGLE PROJECTION	ENGINEER: Luo Jingbo 2023/04/19
		INTERPRET PER ASME Y14.5M-1994	APPROVED BY: Hanson 2023/04/19
		SCALE : N/A	SHEET 3 OF 3
			SIZE: A3