

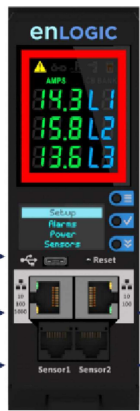
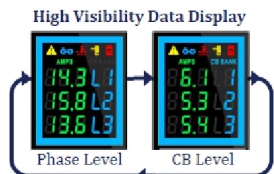
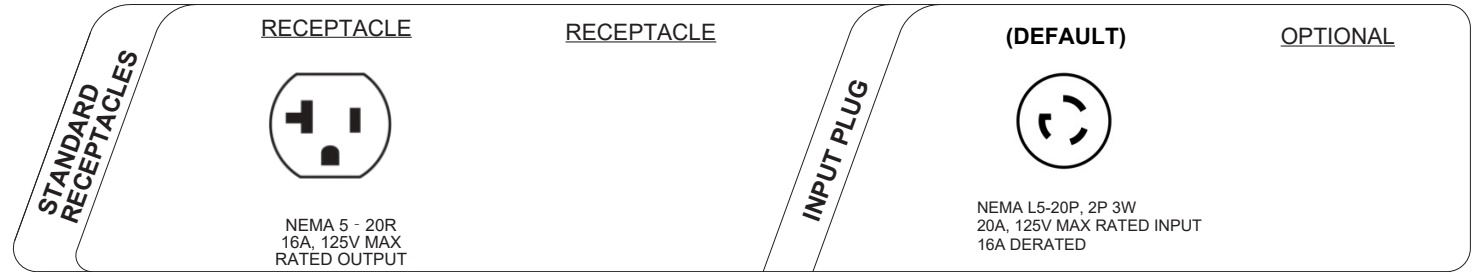
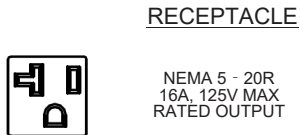
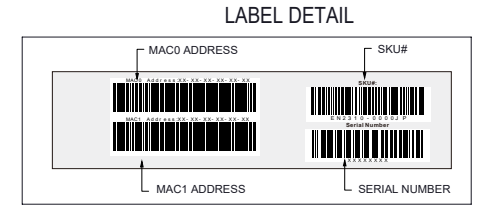
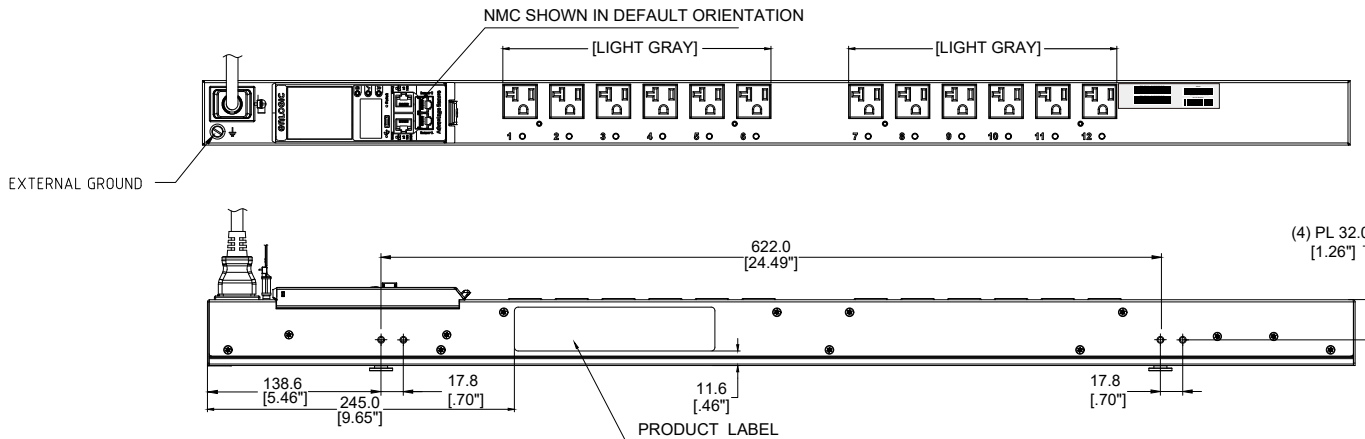
TECHNICAL SPECIFICATIONS	
UNIT TYPE:	MONITORED SWITCHED
ORIENTATION:	VERTICAL, 0U HALF
OUTLET QTY & TYPE:	(12)5-20R
INPUT VOLTAGE:	100-120VAC
INPUT CURRENT:	20A (16A DERATED)
BREAKER QTY & TYPE:	N/A
INPUT PHASE:	SINGLE-PHASE
RATED POWER:	1.9kVA
INPUT PLUG:	SEE NOTE 7
INPUT POWER CORD:	SEE IDENTIFICATION TABLE
FEATURES	
METERING ACCURACY	+/-1% TO ISO/ IEC 62052-21
METERING ATTRIBUTES	VOLTAGE(V), CURRENT(A), APPARENT POWER(kVA), REAL POWER(kW), POWER FACTOR, ENERGY(kWh)
METERED COMPONENTS	INPUT(PHASE)
REMOTE OUTLET SWITCHING	YES
ENVIRONMENTAL CONDITIONS	
OPERATING TEMPERATURE	-5 TO 60 C (23 TO 140 F)
STORAGE TEMPERATURE	-20 TO 60 C (-4 TO 140 F)
HUMIDITY (OPERATING/STORAGE)	5-90% RH / 5-95% RH; NON-CONDENSING
MAX OPERATING ELEVATION, ABOVE MSL	3000M(9840FT)
COMPLIANCE	
SAFETY&ENVIRONMENTAL	RoHS COMPLIANT

IDENTIFICATION TABLE	EN2310-	*	*	*	*	*
MODEL IS SHOWN IN DEFAULT CONFIGURATION. FOR OPTIONAL CONFIGURATIONS, USE ITEM IDENTIFIER CODE IN PLACE OF EACH ASTERISK. ORDERABLE BASED ON FORMAT: EN##### *	INPUT PLUG (DEFAULT) L5-20P=0	CHASSIS COLOR (DEFAULT) BLACK = 0 BLUE = B RED = R WHITE = W GREEN = G YELLOW = Y	CORD OPTION (DEFAULT) 3m [10'] = 0 1m [3.2'] = 1 2m [6.6'] = 2	ORIENTATION (DEFAULT) FRONT FEED = 0 BOTTOM FEED = 2	JP	
OPTIONS LISTED ON THIS ROW ARE NON STANDARD, CONTACT SALES FOR ADDITIONAL INFORMATION		ORANGE = A	0.5m [1.6'] = A 1.2m [4'] = G 1.5m [4.9'] = B 1.8m [6'] = F 2.5m [8.2'] = C			

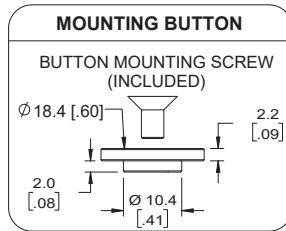
- NOTES :
- INSTALLATION SHALL COMPLY WITH ALL APPLICABLE NATIONAL, STATE AND LOCAL CODES.
 - PRIMARY DIMENSIONS ARE IN MILLIMETERS. SECONDARY DIMENSIONS ARE IN [INCHES]
 - UNIVERSAL MOUNTING BRACKET IS AN ALTERNATIVE MOUNTING METHOD TO THE TOOLLESS MOUNT FOR 3RD PARTY ENCLOSURES. BRACKET IS PROVIDED WITH THE UNIT.
 - DETAILED INSTALLATION INSTRUCTIONS CAN BE FOUND IN THE QUICK START GUIDE
 - CONNECT EXTERNAL EARTH GROUND TO THE 10-32 SIZE THREADED NUT
 - SEE PRODUCT DOCUMENTATION FOR FURTHER INFORMATION
 - INPUT PLUG CONFIGURATION (SEE IDENTIFICATION TABLE) FOR DUAL-RATED UNITS, NEMA PLUGS ARE NAM RATED ONLY AND CAPTIVE AUS/NZ PLUGS ARE EMEA RATED ONLY
 - INPUT C19 WITHOUT LOCKING FUNCTION

THIS DRAWING AND SPECIFICATIONS HEREIN ARE THE PROPERTY OF CIS GLOBAL AND SHALL NOT BE COPIED, REPRODUCED OR USED IN WHOLE OR IN PART, AS THE BASIS FOR THE MANUFACTURE OR SALE OF ITEMS WITHOUT WRITTEN PERMISSION FROM CIS GLOBAL. THIS DRAWING IS BASED UPON LATEST AVAILABLE INFORMATION AND IS SUBJECT TO CHANGE WITHOUT NOTICE

E1	INITIAL DRAFT REVIEW	2023/06/01	LRF	
ECN/ECO	REV.	DESCRIPTION	DATE	APPROVED
REVISIONS				
TITLE:		UNLESS NOTED, DIMENSIONS ARE IN MILLIMETERS & TOLERANCES ARE:		PART NO:
Advantage Series Metered Switched		X. ±1 MM X* ±1"		EN2310-0000JP_DA
		X.X ±0.5 MM X.X* ±0.5"		REV. E1
PROJECT:		X.XX ±0.2 MM		DRAWN BY: LRF
		ΦX.X ±0.3 MM		ENGINEER: LJB
enLOGIC		ΦX.XX ±0.10 MM		APPROVED BY: Hanson
		BRACKETED DIMENSIONS ARE IN INCHES FOR REFERENCE ONLY		SCALE: N/A
		⊕ THIRD ANGLE PROJECTION		SHEET 1 OF 3
		INTERPRET PER ASME Y14.5M-1994		SIZE: A3



- Critical Alarm Alerts
- ▲ PDU Alarm
 - Cascade Error
 - Environmental Alarm
 - Alarm
 - Security Alarm
 - Circuit Breaker Alarm
- Source Color Coding (User Selected Option)
- User Interactive Display (for setup and detailed information)
- 10/100 Ethernet Port (for redundancy and Ethernet cascading)
- Digital Sensor Port 2



- USB-C (upgrades, connectivity, and future-proof expansion)
- 10/100/Gigabit Ethernet Port (primary network port)
- Digital Sensor Port 1 (supports up to 8 physical sensors)

enLOGIC by nVent

TITLE: Advantage Series Metered Switched

PROJECT: enLOGIC

UNLESS NOTED, DIMENSIONS ARE IN MILLIMETERS & TOLERANCES ARE:

X	±1 MM	X°	±1°
X.X	±0.5 MM	X.X°	±0.5°
X.XX	±0.20 MM		
Ø X.X	±0.3 MM		
Ø X.XX	±0.10 MM		

BRACKETED DIMENSIONS ARE IN INCHES FOR REFERENCE ONLY

THIRD ANGLE PROJECTION

INTERPRET PER ASME Y14.5M-1994

PART NO:	EN2310-0000JP_DA	REV.	E1
DRAWN BY:	LRF		2023/06/01
ENGINEER:	LJB		2023/06/03
APPROVED BY:	Hanson		2023/06/03
SCALE:	N/A	SHEET	2 OF 3
		SIZE:	A3

- NOTES:
- INSTALLATION SHALL COMPLY WITH ALL APPLICABLE NATIONAL, STATE AND LOCAL CODES.
 - SEE PRODUCT DOCUMENTATION FOR FURTHER INFORMATION

THIS DRAWING AND SPECIFICATIONS HEREIN ARE THE PROPERTY OF CIS GLOBAL AND SHALL NOT BE COPIED, REPRODUCED OR USED IN WHOLE OR IN PART, AS THE BASIS FOR THE MANUFACTURE OR SALE OF ITEMS WITHOUT WRITTEN PERMISSION FROM CIS GLOBAL. THIS DRAWING IS BASED UPON LATEST AVAILABLE INFORMATION AND IS SUBJECT TO CHANGE WITHOUT NOTICE

enLOGIC

RACK Power Distribution Unit
Metered Switched

Made In XXXXX (Factory ID: X)

SKU#



SKU #: EN2310-0000JP
Model #: EP23016-0020
INPUT: 100-120VAC, 1PHASE, 50/60Hz, 16A
OUTPUT: 5-20R; 100-120VAC, 16A per outlet
16A Total

THIS DEVICE COMPLIES WITH PART 15 OF THE FCC RULES. OPERATION IS SUBJECT TO THE FOLLOWING TWO CONDITIONS:
(1) THIS DEVICE MAY NOT CAUSE HARMFUL INTERFERENCE, AND (2) THIS DEVICE MUST ACCEPT ANY INTERFERENCE RECEIVED, INCLUDING INTERFERENCE THAT MAY CAUSE UNDESIRABLE OPERATION.
CAN ICES-3(A)/NMB-3(A)



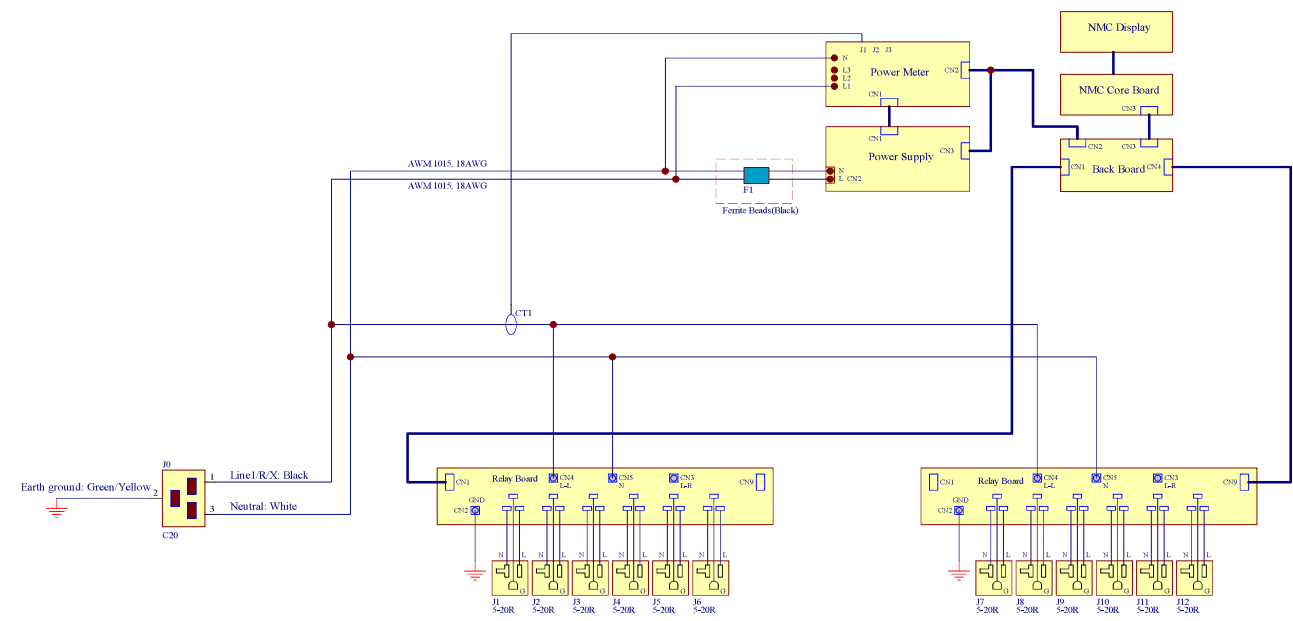
MAC0 Address: XX-XX-XX-XX-XX
MAC1 Address: XX-XX-XX-XX-XX

Mfr. Name: XXXXXXXXXXXXXXXXXXXXXXXXXXXX

NOTES:

- INTERNAL WIRING:
WIRE TYPE: UL AWM 1015, 12 & 18AWG
LINE 1/R/X COLOR: BLACK
EARTH GROUND COLOR: GREEN/YELLOW STRIPE
NEUTRAL WIRE COLOR: WHITE
- FOR FINISHED GOOD PART NUMBER SEE IDENTIFICATION

COMPLIANCE LABEL



INTERNAL WIRING SCHEMATIC

- NOTES:**
- INSTALLATION SHALL COMPLY WITH ALL APPLICABLE NATIONAL, STATE AND LOCAL CODES.
 - SEE PRODUCT DOCUMENTATION FOR FURTHER INFORMATION
 - THIS DRAWING DEPICTS THE POWER SYSTEM CONNECTIONS AND IS NOT REPRESENTATIVE OF THE PHYSICAL LAYOUT. PLEASE REFER TO MECHANICAL DRAWINGS FOR PHYSICAL LAYOUT.

THIS DRAWING AND SPECIFICATIONS HEREIN ARE THE PROPERTY OF CIS GLOBAL AND SHALL NOT BE COPIED, REPRODUCED OR USED IN WHOLE OR IN PART, AS THE BASIS FOR THE MANUFACTURE OR SALE OF ITEMS WITHOUT WRITTEN PERMISSION FROM CIS GLOBAL. THIS DRAWING IS BASED UPON LATEST AVAILABLE INFORMATION AND IS SUBJECT TO CHANGE WITHOUT NOTICE

TITLE:
Advantage Series
Metered Switched

PROJECT:
enLOGIC

UNLESS NOTED, DIMENSIONS ARE IN MILLIMETERS & TOLERANCES ARE:
X: ±1 MM X*: ±1°
X.X ±0.5 MM X.X*: ±0.5°
X.XX ±0.20 MM
ØX.X ±0.3 MM
ØX.XX ±0.10 MM

BRACKETED DIMENSIONS ARE IN INCHES FOR REFERENCE ONLY
⊕ THIRD ANGLE PROJECTION
INTERPRET PER ASME Y14.5M-1994

PART NO: EN2310-0000JP_DA	REV. E1
DRAWN BY: LRF	2023/06/01
ENGINEER: LJB	2023/06/03
APPROVED BY: Hanson	2023/06/03
SCALE: N/A	SIZE: SHEET 3 OF 3 A3