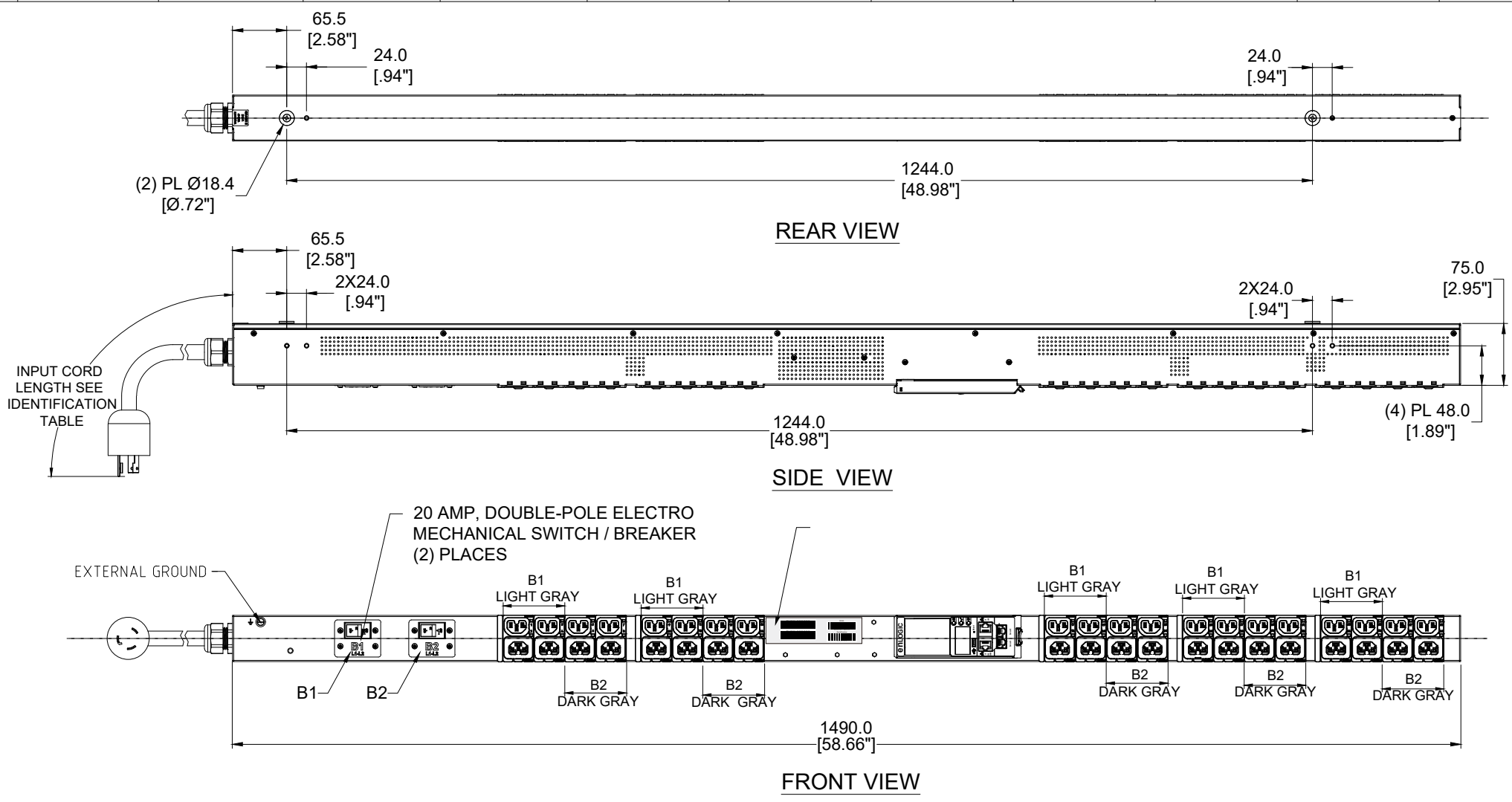


DESIGN^(PDU) ENGINEERING



| TECHNICAL SPECIFICATIONS | |
|------------------------------------|--|
| UNIT TYPE: | MONITORED&SWITCHED PER OULET |
| ORIENTATION: | VERTICAL, 0U FULL |
| OUTLET QTY & TYPE: | (20)C13/C15,(20)C13/C15/C19 |
| INPUT VOLTAGE: | 200-240VAC |
| INPUT CURRENT: | 30A (24A DERATED) |
| BREAKER QTY & TYPE: | (2) 20AMP, DUBLE-POLE ,5KA |
| INPUT PHASE: | SINGLE-PHASE |
| RATED POWER: | 5 kVA |
| INPUT PLUG: | SEE NOTE 7 |
| INPUT POWER CORD: | SEE IDENTIFICATION TABLE |
| FEATURES | |
| METERING ACCURACY | +/-1% TO ISO/ IEC 62052-21 |
| METERING ATTRIBUTES | VOLTAGE(V), CURRENT(A), APPARENT POWER(kVA), REAL POWER(kW), POWER FACTOR, ENERGY(kWh) |
| METERED COMPONENTS | INPUT(PHASE), CIRCUIT BREAKERS, OUTLETS |
| REMOTE OUTLET SWITCHING | YES |
| ENVIRONMENTAL CONDITIONS | |
| OPERATING TEMPERATURE | -5 TO 60 C (23 TO 140 F) |
| STORAGE TEMPERATURE | -20 TO 60 C (-4 TO 140 F) |
| HUMIDITY (OPERATING/STORAGE) | 5-90% RH / 5-95% RH; NON-CONDENSING |
| MAX OPERATING ELEVATION, ABOVE MSL | 3000M(9840FT) |
| COMPLIANCE | |
| SAFETY&ENVIRONMENTAL | RoHS COMPLIANT |

| IDENTIFICATION TABLE | EN6351-* | * INPUT PLUG | * CHASSIS COLOR | * CORD OPTION | * ORIENTATION |
|--|-------------------|--|--|---|---|
| MODEL IS SHOWN IN DEFAULT CONFIGURATION. FOR OPTIONAL CONFIGURATIONS, USE ITEM IDENTIFIER CODE IN PLACE OF EACH ASTERISK. ORDERABLE BASED ON FORMAT: EN6351-**** | (DEFAULT)L6-30P=0 | (DEFAULT) BLACK = 0 BLUE = B RED = R GREEN = G WHITE = W YELLOW = Y | (DEFAULT) 3m [10'] = 0 1m [3.2'] = 1 2m [6.6'] = 2 3m [10'] = 3 | (DEFAULT) TOP FEED = 0 BOTTOM FEED = 2 | ORANGE = A 0.5m [1.6'] = A 1.2m [4'] = G 1.5m [4.9'] = B 1.8m [6'] = F 2.5m [8.2'] = C |
| OPTIONS LISTED ON THIS ROW ARE NON STANDARD, CONTACT SALES FOR ADDITIONAL INFORMATION | | | | | |

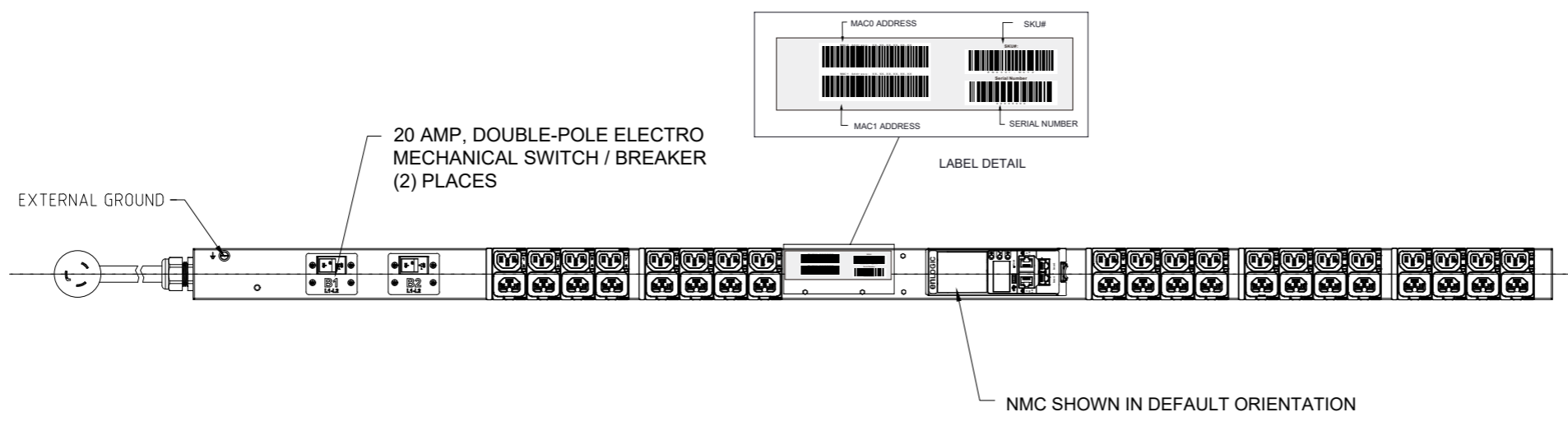
- NOTES :**
- INSTALLATION SHALL COMPLY WITH ALL APPLICABLE NATIONAL, STATE AND LOCAL CODES.
 - PRIMARY DIMENSIONS ARE IN MILLIMETERS. SECONDARY DIMENSIONS ARE IN [INCHES]
 - UNIVERSAL MOUNTING BRACKET IS AN ALTERNATIVE MOUNTING METHOD TO THE TOOLLESS MOUNT FOR 3RD PARTY ENCLOSURES. BRACKET IS PROVIDED WITH THE UNIT.
 - DETAILED INSTALLATION INSTRUCTIONS CAN BE FOUND IN THE QUICK START GUIDE
 - CONNECT EXTERNAL EARTH GROUND TO THE 10-32 SIZE THREADED NUT
 - SEE PRODUCT DOCUMENTATION FOR FURTHER INFORMATION
 - INPUT PLUG CONFIGURATION (SEE IDENTIFICATION TABLE) FOR DUAL-RATED UNITS, NEMA PLUGS ARE NAM RATED ONLY AND CAPTIVE AUS/NZ PLUGS ARE EMEA RATED ONLY

enLOGIC by nvent

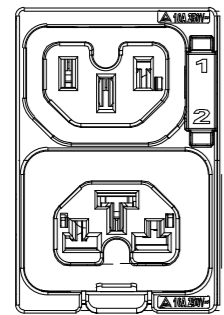
THIS DRAWING AND SPECIFICATIONS HEREIN ARE THE PROPERTY OF CIS GLOBAL AND SHALL NOT BE COPIED, REPRODUCED OR USED IN WHOLE OR IN PART, AS THE BASIS FOR THE MANUFACTURE OR SALE OF ITEMS WITHOUT WRITTEN PERMISSION FROM CIS GLOBAL. THIS DRAWING IS BASED UPON LATEST AVAILABLE INFORMATION AND IS SUBJECT TO CHANGE WITHOUT NOTICE

| ECN/ECO | REV. | DESCRIPTION | DATE | APPROVED |
|-----------|------|--|--------------------------------|--------------|
| E1 | | INITIAL DRAFT REVIEW | 2023/02/01 | LRF |
| REVISIONS | | | | |
| TITLE : | | UNLESS NOTED, DIMENSIONS ARE IN MILLIMETERS & TOLERANCES ARE: | PART NO: EN6351-WXYZ_DA | |
| PROJECT : | | X ±1 MM X° ±1° X.X ±0.5 MM X.X° ±0.5° X ±0.20 MM Ø X.X ±0.3 MM Ø X.XX ±0.10 MM | REV. E1 | |
| | | BRACKETED DIMENSIONS ARE IN INCHES FOR REFERENCE ONLY | DRAWN BY: LRF 2023/02/01 | |
| | | ⊕ THRID ANGLE PROJECTION | ENGINEER: LJB 2023/02/01 | |
| | | INTERPRET PER ASME Y14.5M-1994 | APPROVED BY: Hanson 2023/02/01 | |
| | | | SCALE : N/A | SHEET 1 OF 3 |
| | | | | SIZE: A3 |

**DESIGN^(PDU)
ENGINEERING**

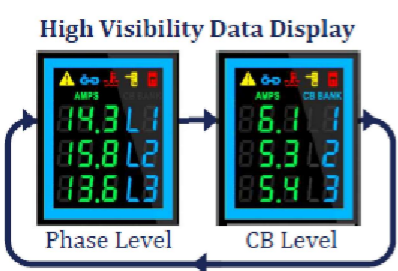
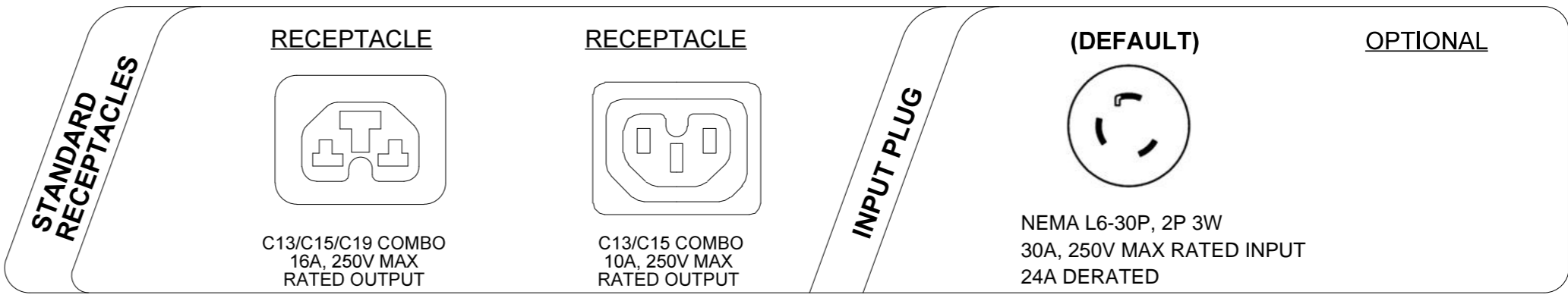


RECEPTACLE



C13/C15 COMBO
10A, 250V MAX
RATED OUTPUT

C13/C15/C19 COMBO
16A, 250V MAX
RATED OUTPUT



USB-C
(upgrades, connectivity, and future-proof expansion)

10/100/Gigabit Ethernet Port
(primary network port)

Digital Sensor Port 1
(supports up to 8 physical sensors)

Critical Alarm Alerts

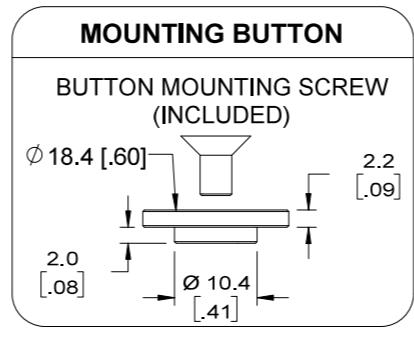
- PDU Alarm
- Cascade Error
- Environmental Alarm
- Security Alarm
- Circuit Breaker Alarm

Source Color Coding
(User Selected Option)

User Interactive Display
(for setup and detailed information)

10/100 Ethernet Port
(for redundancy and Ethernet cascading)

Digital Sensor Port 2



NOTES:

- INSTALLATION SHALL COMPLY WITH ALL APPLICABLE NATIONAL, STATE AND LOCAL CODES.
- SEE PRODUCT DOCUMENTATION FOR FURTHER INFORMATION



THIS DRAWING AND SPECIFICATIONS HEREIN ARE THE PROPERTY OF CIS GLOBAL AND SHALL NOT BE COPIED, REPRODUCED OR USED IN WHOLE OR IN PART, AS THE BASIS FOR THE MANUFACTURE OR SALE OF ITEMS WITHOUT WRITTEN PERMISSION FROM CIS GLOBAL. THIS DRAWING IS BASED UPON LATEST AVAILABLE INFORMATION AND IS SUBJECT TO CHANGE WITHOUT NOTICE

TITLE:

Advantage Series
Metered & Switched per outlet

PROJECT:

enLOGIC

UNLESS NOTED, DIMENSIONS ARE IN MILLIMETERS & TOLERANCES ARE:

| | |
|-----------------|------------|
| X. ±1 MM | X° ±1° |
| X.X ±0.5 MM | X.X° ±0.5° |
| X.XX ±0.20 MM | |
| Ø X.X ±0.3 MM | |
| Ø X.XX ±0.10 MM | |

BRACKETED DIMENSIONS ARE IN INCHES FOR REFERENCE ONLY

⊕ THRID ANGLE PROJECTION

INTERPRET PER ASME Y14.5M-1994

| | |
|-----------------------------------|------------------------|
| PART NO: EN6351-WXYZ_DA | REV. E1 |
| DRAWN BY: LRF | 2023/02/01 |
| ENGINEER: LJB | 2023/02/01 |
| APPROVED BY: Hanson | 2023/02/01 |
| SCALE: N/A | SHEET 2 OF 3 |
| | SIZE: A3 |

enLOGIC RACK Power Distribution Unit **Made In XXXXX**

SKU #: EN6351-WXYZ
 Model #: EP161024-0060-C
 INPUT: 200-240VAC, 1PHASE, 50/60Hz, 24A
 OUTPUT: C13/C15 COMBO; 200-240VAC, 10A per outlet
 C13/C15/C19 COMBO; 200-240VAC, 16A max per outlet
 24A Total

MAC0 Address:XX-XX-XX-XX-XX
 MAC1 Address:XX-XX-XX-XX-XX

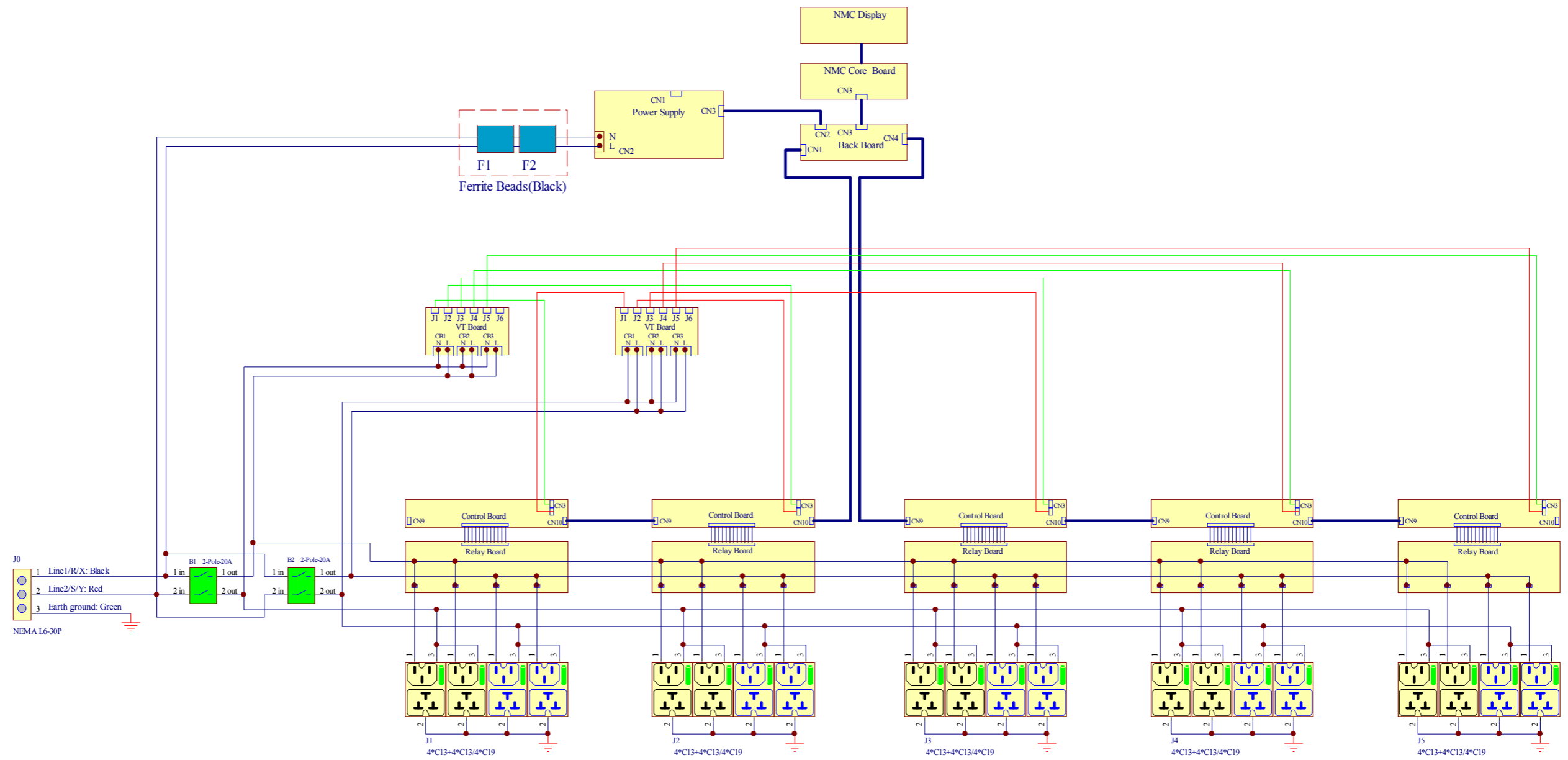
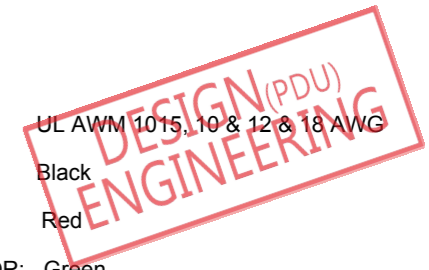
FC SP US 300805

Serial Number
 XXXXXX X X X X

THIS DEVICE COMPLIES WITH PART 15 OF THE FCC RULES. OPERATION IS SUBJECT TO THE FOLLOWING TWO CONDITIONS:
 (1) THIS DEVICE MAY NOT CAUSE HARMFUL INTERFERENCE, INCLUDING INTERFERENCE THAT MAY CAUSE UNDESIRABLE OPERATION. CAN ICES-3(A)/NMB-3(A)

COMPLIANCE LABEL

- NOTES:
- INTERNAL WIRING
- WIRE TYPE: UL AWM 1015, 10 & 12 & 18 AWG
- LINE 1/R/X COLOR: Black
- LINE 2/S/Y COLOR: Red
- EARTH GROUND COLOR: Green
- FOR FINISHED GOOD PART NUMBER SEE IDENTIFICATION



INTERNAL WIRING SCHEMATIC DIAGRAM

- NOTES:
- INSTALLATION SHALL COMPLY WITH ALL APPLICABLE NATIONAL, STATE AND LOCAL CODES.
 - SEE PRODUCT DOCUMENTATION FOR FURTHER INFORMATION
 - THIS DRAWING DEPICTS THE POWER SYSTEM CONNECTIONS AND IS NOT REPRESENTATIVE OF THE PHYSICAL LAYOUT. PLEASE REFER TO MECHANICAL DRAWINGS FOR PHYSICAL LAYOUT.

enLOGIC by nvent

THIS DRAWING AND SPECIFICATIONS HEREIN ARE THE PROPERTY OF CIS GLOBAL AND SHALL NOT BE COPIED, REPRODUCED OR USED IN WHOLE OR IN PART, AS THE BASIS FOR THE MANUFACTURE OR SALE OF ITEMS WITHOUT WRITTEN PERMISSION FROM CIS GLOBAL. THIS DRAWING IS BASED UPON LATEST AVAILABLE INFORMATION AND IS SUBJECT TO CHANGE WITHOUT NOTICE

TITLE: Advantage Series
 Metered & Switched per outlet

PROJECT: enLOGIC

UNLESS NOTED, DIMENSIONS ARE IN MILLIMETERS & TOLERANCES ARE:
 X. ±1 MM X° ±1°
 X.X ±0.5 MM X.X° ±0.5°
 X.XX ±0.20 MM
 ØX.X ±0.3 MM
 ØX.XX ±0.10 MM

BRACKETED DIMENSIONS ARE IN INCHES FOR REFERENCE ONLY

THIRD ANGLE PROJECTION
 INTERPRET PER ASME Y14.5M-1994

| | | | |
|--------------|----------------|--------|------------|
| PART NO: | EN6351-WXYZ_DA | REV: | E1 |
| DRAWN BY: | LRF | DATE: | 2023/02/01 |
| ENGINEER: | LJB | DATE: | 2023/02/01 |
| APPROVED BY: | Hanson | DATE: | 2023/02/01 |
| SCALE: | N/A | SHEET: | 3 OF 3 |
| | | SIZE: | A3 |