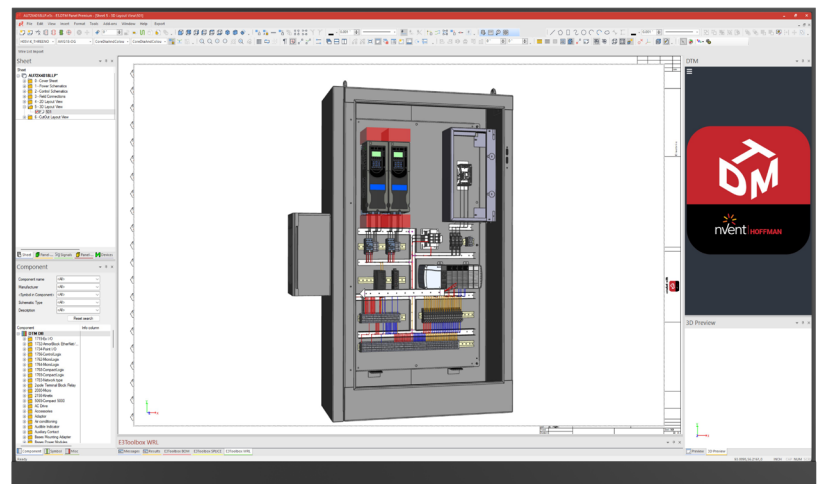
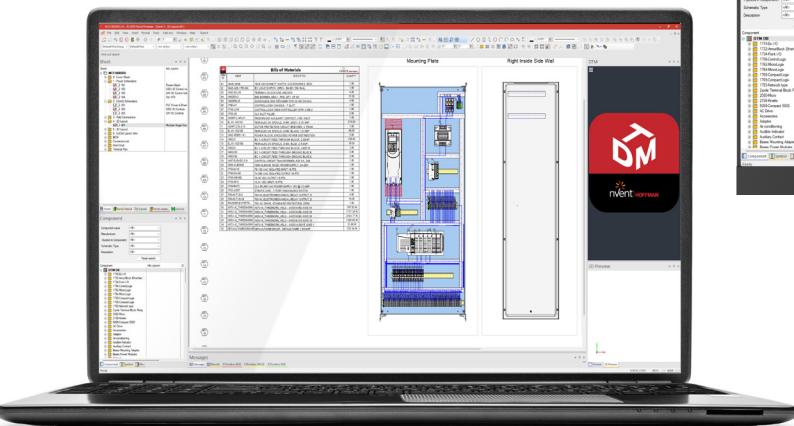


## DTM Professional

DTM Engineering & Manufacturing Software enables designers to use powerful features to simplify the design process and capture manufacturing data to drive automated manufacturing.

**DTM Professional** package provides the most common features required to create schematics and panel layouts. Available in 30, 120 or unlimited drawing sheet options. The drawing sheet limitation applies to a single project.



Provides a variety of smart cabinet-building features to simplify and streamline end-to-end processes, and generates the data needed for automated manufacturing, wiring, and assembling the solutions.

Enables engineers to easily design panels in 2D and seamlessly switch to 3D views – with changes saved simultaneously. That means designers can efficiently and effectively plan form, fit, and function for projects early in the design process.

Available DTM Software packages: **Professional**, Premium and Connected Worker

## PROFESSIONAL FEATURES

### Design Collaboration

- Live online design rule checks to eliminate errors before they occur
- Passive design rule checks to inspect design quality
- Automatically select pin terminals based on wire size
- Real-time information synchronization between drawing types
- Automated selection of connector mates, inserts, contacts, wire end treatments, seals, plugs, etc.
- Manage project organization by location or function
- Intelligent tagging for devices, wires, cables and other design objects
- Supports PLC based designs with intelligent I/O management
- Supports terminal strip planning and assignment
- Supports options and variance in design

### Schematic Design

- Automated naming and signal management
- Automatically maintain signal continuity and integrity
- Automatically size wires based on pin restrictions
- Auto place shields, bundles and other cabling details
- Supports auto-connect and holds connection if components are moved
- Intelligent off-page connection management
- Real-time component cross reference management
- Ensure integrity of connector mates
- Avoid signal cross connection or shorts for named signals
- Automatically update data across the project

### Panel Layout

- 2D Panel layout
- 3D Panel layout
- Route wires automatically with manufacturing accuracy
- Apply cutouts and keep outs for enclosure modification
- Detect collision in 3D while placing object in 2D
- Bi-directional representation of 2D and 3D views
- Intelligent duct and rail hole calculations
- Intelligent mounting inside panels
- Create 2D drawings of 3D layout
- View all or single enclosure in one drawing
- Connected sub-section views of enclosure
- Define wire routing path with ducts in the panel layout
- Plan signal inclusion and exclusion from wire ducts
- Shortest path detection for wire routes
- Collision detection in 3D to ensure manufacturability
- Automatic wire numbering and device tagging

### Library and Database Management

- Easy-to-use library of parts
- Shared library for multiple teams and sites
- Capture manufacturing and engineering data in one place
- MS SQL, Oracle or Access database for sharing parts and standards
- Company specific customizable attributes and text types
- Easy to create panel parts with STEP or DWG
- Add 3D details to 2D objects
- Part management as one object with multiple representations to ensure consistency

- Manage connectors with mates and inserts
- Define and manage reusable circuits or blocks in library
- Define cables and connectivity in the library
- Define keep out areas and restrictions in the library
- Define drill holes, cutouts, and other physical details in the library
- Define mounting details in the library
- Manage wires and cables in the library
- Automatic wire numbering and device tagging

### Import and Export

- Export as DWG
- Export as PDF
- Create export for nVent HOFFMAN ModCenter cutouts
- Create export for PWA
- Create export for other wiring machines
- Create ballooned onpage B.O.M
- Import STEP models to create panel parts
- Automatic wire numbering and device tagging
- Automation and Reporting
- Open API to create own customizations
- Built-in reports to extract pertinent data
- Custom report creation, design, and processing tools
- Automatically create terminal layout drawings
- Generate drawings from Excel data
- Start designs from Excel From-to lists
- Create output for automated test machines
- Automatic wire numbering and device tagging



Our powerful portfolio of brands:

**CADDY ERICO HOFFMAN ILSCO RAYCHEM SCHROFF**