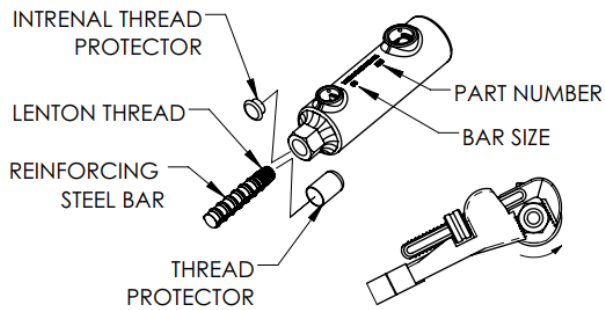


# nVent LENTON Installation Instructions

## INTERLOK – Americas



LENTON INTERLOK couplers are fastened to the rebar using a LENTON Tapered Threaded Bar End and placed into a pre-cast form. The LENTON INTERLOCK splice is completed at the jobsite by inserting the exposed dowels of an adjoining pre-cast member into the coupler grout cavities and filling with LENTON INTERLOK HY15LM Grout.

			INTERLOK COUPLER NUMBER	Coupler Article No.	OPTIMAL TORQUE <sup>1</sup>	
in-lb	Metric	Canada			ft-lb	Nm
#5	16mm	15M	LK16**	---	90	120
#5	16mm	15M	LK5	145575	90	120
#6	20mm	20M	LK20**	---	120	180
#6	20mm	20M	LK6	145580	120	180
#7	22mm	---	LK7	145585	160	220
#8	25mm	25M	LK25	---	200	270
#8	25mm	25M	LK8	145590	200	270
#9	28mm	30M	LK9	145595	200	270
#10	32mm	---	LK10	145600	200*	300
#11	36mm	35M	LK36	---	200	270
#11	36mm	35M	LK11	145605	200*	300
	38mm		LK12	---	200	270
---	40mm	---	LK40	---	200*	350
#14	43mm	45M	LKT14	145611	200*	350
---	50mm	---	LKT50	---	200*	350
#18	57mm	55M	LKT18	145620	200*	350

\*Americas Only

Note 1: Refer to "SNUG Tight Installation Instruction in this document"

NOTE! Reference LENTON INTERLOK User's manual IP8419 for more detailed instructions.

### WARNING:

- nVent products shall be installed and used only as indicated in nVent product instruction sheets and training materials. Instruction sheets are available at [www.nVent.com](http://www.nVent.com) and from your nVent customer service representative.
- nVent products must never be used for a purpose other than the purpose for which they were designed or in a manner that exceeds specified load ratings.
- All instructions must be **completely** followed to ensure proper and safe installation and performance.
- Improper installation, misuse, misapplication, or other, failure to completely follow nVent's instructions and warnings may cause product malfunction, property damage, serious bodily injury, and/or death, and void your warranty.

The customer is responsible for:

- Conformance to all governing codes.
- The integrity of structures to which the products are attached, including their capability of safely accepting the loads imposed, as evaluated by a qualified engineer.
- Using appropriate industry standard hardware as noted above.

### SAFETY INSTRUCTIONS:

All governing codes and regulations and those required by the job site must be observed. Always use appropriate safety equipment such as eye protection, hard hat, and gloves as appropriate to the application.

nVent, nVent CADDY, nVent ERICO Cadweld, nVent ERICO Critec, nVent ERICO, nVent EIRFLEX, and nVent LENTON are registered trademarks of nVent or its global affiliates. All other trademarks are the property of their respective owners. nVent reserves the right to change specifications without prior notice.

### Attaching Coupler to Rebar

Determine whether the coupler is the correct size for the bars being spliced. Each coupler is identified with the bar size and part number (see Table 1). Remove internal thread protector if installed.

Remove the bar end thread protector. Examine tapered threaded bar end to make sure it is clean and not damaged. If cleaning is required, a wire brush should be used. Install coupler until hand tight, approximately 4-1/2 turns clockwise.

To complete installation, hold rebar stationary and tighten the coupler per table 1.

### Attachment to the Form:

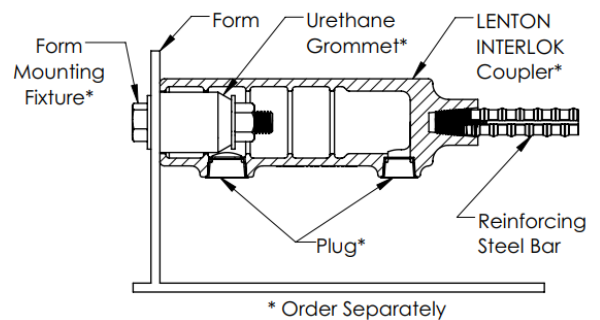
Follow the instructions provided with LENTON INTERLOK Form Mounting Fixtures. It is important that the Form Mounting Fixture is tightened properly so that the urethane grommet is expanded enough to firmly secure the coupler to the form and prevent concrete slurry from entering the coupler grout cavity during the pour.

### Gravity Fill Applications:

(grout tubes **NOT** required)

Ensure coupler grout ports are permanently plugged and sealed to prevent concrete slurry from entering coupler grout cavity. Place coupler as required.

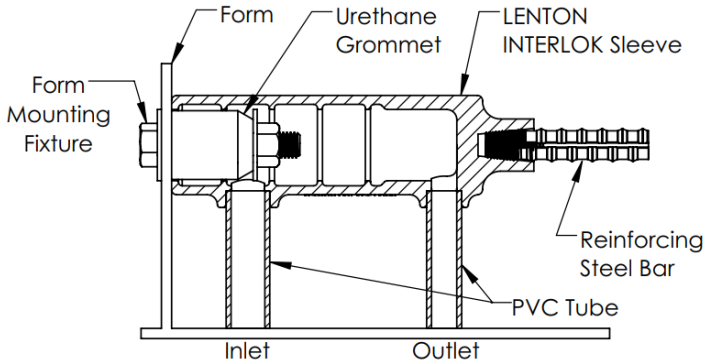
**SNUG Tight Installation Instructions:** SNUG Tight installation (>5 ft-lbs) may be used with ASTM A615 or A706 Grade 60 and Grade 80 rebar for commercial projects when splice performance requirements are limited to only ACI 318 Type 1 (125% Specified Yield) or Type 2 (Specified Tensile), or when otherwise approved by the project. Additional steps may be necessary to secure product for transportation and handling.



## Pump Fill Applications

### (grout tubes required):

Place coupler as required. Ensure that grout ports are properly sized, positioned and cut to adequate length. Secure coupler and grout tubes to prevent movement before or during the pour.



**NOTE!** It is recommended that grout tube lengths be kept to a minimum to ease job site installation of LENTON INTERLOK HY15LM grout. Slight bending of PVC tubing may be required to ensure proper installation of grout tubes. Temporarily plug access to grout tubes to prevent debris from obstruction placement of grout at job site.

**NOTE!** Ref. LENTON INTERLOK User's manual #IP8419 for completed instructions.

### DOWEL LENGTHS and INSPECTION:

Check required dowel lengths (ref. #IP8419 LENTON INTERLOCK User's manual). Dowel lengths may need to be longer due to sealing (bedding) mortar requirements for the project. Check project plans and ensure dowel lengths have adequate lengths.

### POURING OF CONCRETE INTO FORMS:

Ensure all requirements of project plans are complete. When pouring concrete, make sure not to disturb placement of grout tubes.

### REMOVAL OF FORMS AND COUPLER INSPECTION:

Remove all LENTON INTERLOK Form Mounting Fixtures and formwork. Remove temporary plugs at end of grout tubes and inspect to ensure tubes are clear and free of any obstructions that would inhibit the flow of grout to the coupler grout cavity. Check coupler grout cavities and remove any existing concrete slurry, etc.

Re-install temporary plugs in grout tubes and coupler grout cavities so as to provide protection from debris during storage, transit to job site, etc. These should be removed when pre-cast member is ready to be installed at job site.