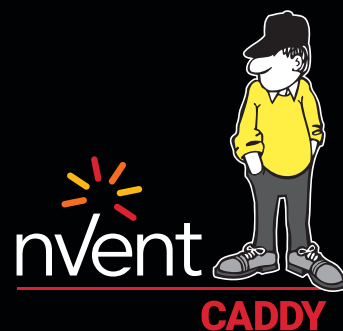


nVent CADDY Telescopic Screw Gun Box Strap



CONNECT AND PROTECT



The nVent CADDY Telescopic Screw Gun Box Strap is a versatile and robust support inspired by installers in the UK to securely fasten electric boxes to in-wall studs. Its engineered profile guarantees an extra sturdy and durable connection to the box and studs while requiring a minimal amount of screws. Available in two sizes, the box strap accommodates most stud spacings without cumbersome and time-consuming rework.

FEATURES

- Engineered profile with a recessed cavity to provide extra sturdy connection to the box and prevent loosening over time, even with short 12 mm-long self-tapping screws
- Improved design only requires a single screw per tab and two screws per box, saving up to 30% of installation time
- Can mount multiple boxes
- Notched and marked for easy identification and bending, tailored to UK market box depths
- Improved design with stamped mm markings and pilot holes accelerates precise box conduit mounting between studs
- V cut-out and line of pilot holes indicates a bar's center for a fast bracket leveling using a laser level
- Pilot holes allow easy box attachment with a screwdriver
- Requires only a screw gun to install
- Can be mounted to face or inside of stud using a single screw per tab
- Adjustable for non-standard stud spacing
- Interlocking tab prevents accidental disassembly
- Unique, one-piece, break apart design
- Can be used with nVent CADDY SMS8 Self-Drilling and Tapping Screw (sold separately) that is suitable for screw gun use

Material: Steel
Finish: Pregalvanized

| Part Number | Article Number | Stud Spacing | Box Depth |
|-------------|----------------|--------------|---------------------|
| TSGB812UK | 187201 | 200 – 350 mm | 25 mm, 35 mm, 47 mm |
| TSGB1624UK | 187202 | 355 – 655 mm | 25 mm, 35 mm, 47 mm |

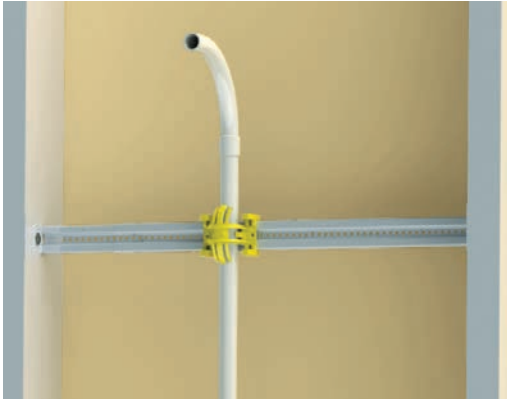
nVent CADDY In-Wall Conduit Positioning Clip



The nVent CADDY In-Wall Conduit Positioning Clip is an intuitive, tool-free and screwless solution to quickly and securely position 20 to 25 mm conduits onto nVent CADDY Telescopic Screw Gun Box Straps. Ideal for drywall installations taking place before electricians arrive onsite to wire electrical boxes – commonly known as “hockey stick” installations.

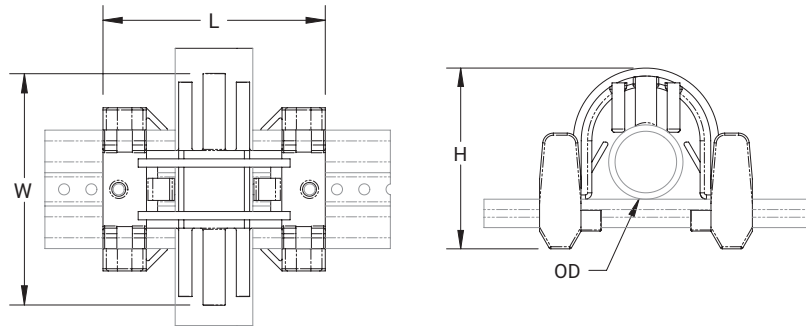
FEATURES

- Quick, snap-on design
- Side-to-side adjustability until firmly engaged into nVent CADDY Telescopic Screw Gun Box Strap pilot holes
- Hole on either side for optional screw connection to the nVent CADDY Telescopic Screw Gun Box Strap
- Compatible with 20 and 25 mm rigid and flexible conduit
- Reduced width to accommodate conduit-spacing as low as 25 mm for busy areas
- Low-smoke and halogen-free



Material: High Density Polyethylene (HDPE)

| Part Number | Article Number | Length L | Height H | Width W | Outer Diameter OD |
|-------------|----------------|----------|----------|---------|-------------------|
| CPC | 188220 | 51 mm | 43 mm | 53 mm | 20 – 25 mm |



Our powerful portfolio of brands:

CADDY ERICO HOFFMAN ILSCO RAYCHEM SCHROFF