

Rail Track Connector Bond, Multi-Leg



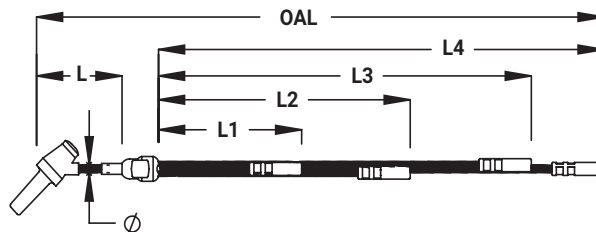
The Rail Track Connector Bond, Multi-Leg is designed for rail wayside signaling applications. This solution is designed to allow multiple connections to rail in highly congested areas of track while safely maintaining rail integrity. Connections to the rail can be made via nVent ERICO Cadweld exothermic connection or nVent ERICO plug bond connection.

FEATURES:

- Helps maintain safety and rail integrity
- Minimizes downtime on track due to maintenance
- Easily make future connections in high-congestion areas
- Patent pending customized solution to meet a wide variety of applications
- Factory-made nVent ERICO Cadweld connection for superior reliability
- Existing equipment and molds can be used for the connection

Material: Copper Magnesium
Finish: Tinned

Catalog Number	Bond Terminal Style	Conductor Size	Connector Conductor Size	Diameter Ø	Length L	Length 1 L1	Length 2 L2	Length 3 L3	Length 4 L4	Overall Length imperial
SBSCR3S2CR8B	Crimp	3/16" Bondstrand	3/16" Bondstrand	0.19"	3"	2.5"	4"	-	-	8"
SBSPL3S4CR24B	Plug	3/16" Bondstrand	3/16" Bondstrand	0.19"	3"	4"	8"	16"	20"	24"
SBSTB3S2CR7B	Tab	3/16" Bondstrand	3/16" Bondstrand	0.19"	2"	2.5"	4"	-	-	7"
SBSTB3E2CR7B	Tab	3/16" Bondstrand	3/16" Bondstrand	0.19"	2"	4.5"	4.5"	-	-	7.5"



Our powerful portfolio of brands:

CADDY ERICO HOFFMAN ILSCO RAYCHEM SCHROFF