

Floor Heating Cable Accessories

nVent

RAYCHEM

COMFORT YOU DESERVE

nVent RAYCHEM installation aids for underfloor heating cables T2Blue, T2Green and T2Black

DESCRIPTION



nVent RAYCHEM installation aids for underfloor heating cables are a set of accessories designed to help you install the underfloor heating cables depending on your installation type and selection of your cable.

The attachment methods consist of:

- nVent RAYCHEM T2Black Cable Guides
- nVent RAYCHEM Cable Clips for T2Blue, T2Black or T2Green
- nVent RAYCHEM Glue Sticks

ADVANTAGES

nVent RAYCHEM T2Black Cable Guides:

- Easy to install (glue, nail or screw in the subfloor)
- Perfect spreading of the cable over the entire floor surface
- Modular design (click into each other to make the guide longer)

nVent RAYCHEM Cable Clips for T2Blue, T2Black or T2Green:

- Perfect fit with 2.5 mm reinforcement bar
- Click and snap method (click on the reinforcement bar and snap the cable in the clip)
- Works in both direction (along with and across the reinforcement bar)
- Can be attached on the top as well as on the bottom bar
- Can be attached under the bar or flat on the bar
- Compatible with all cable types (T2Blue, T2Black, T2Green)

nVent RAYCHEM Glue Sticks:

- When installing the cable directly on a concrete surface
- Flexible in shape and compatible with all types of subfloor
- Compatible with all cable types (T2Blue, T2Black, T2Green)



INSTALLATION INSTRUCTIONS

nVent RAYCHEM Cable Guides

Cable Guides can be attached to the subfloor using screws, nails, staples or hotmelt glue. When using screws, nails or staples, use 3 to 4 screws, nails or staples per entire Cable Guide.

The Cable Guides (30 cm per guide) are designed to snap together (Figure 1) and can be cut to length to adapt to the size of the room.

Ensure individual cable runs maintains moderate tension (Figure 2 & 3). This will prevent the cable from floating during the floor covering preparation.

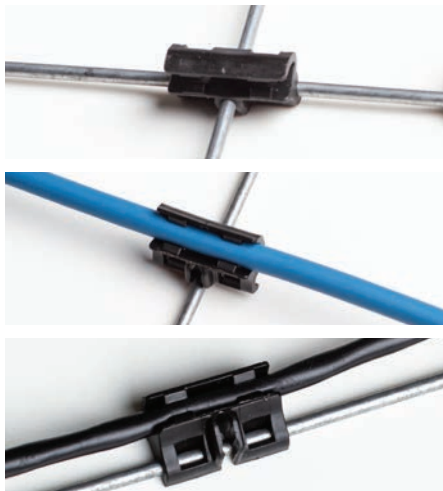
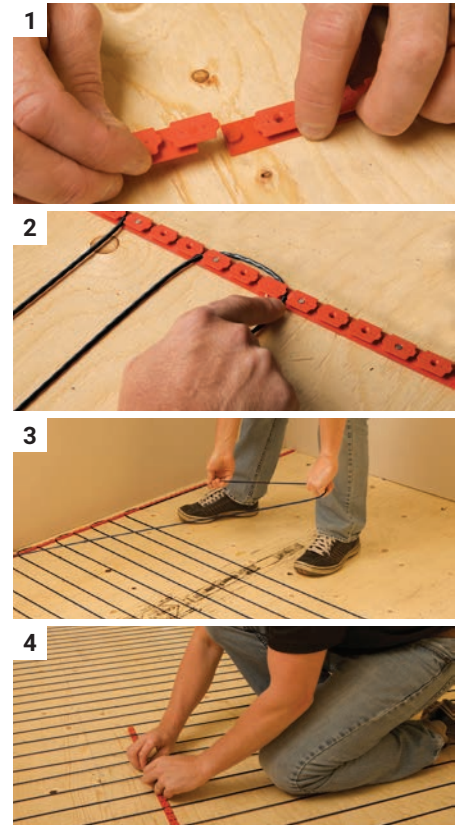
Install "Stabilizing Cable Guides" every 50 cm (Figure 4) to ensure the heating cables do not float during the self-levelling process.

To make installation of the "Stabilizing Cable Guides" easier, flip the cable guide upside down to smoothly pass underneath the cable runs. Then flip the guides over to secure them to the subfloor and snap the cables into place.

The distance between the Cable Guides is 25,4 mm (center to center). A typical spacing for the T2Black would be 4 to 6 studs.

| Studs | 4 | 5 | 6 | 7* |
|------------|----------------------|----------------------|----------------------|------------------------|
| T2Black-12 | 118 W/m ² | 94 W/m ² | 79 W/m ² | N/A |
| T2Black-20 | N/A | 157 W/m ² | 131 W/m ² | 112 W/m ² * |

* only recommended with subfloor of 50 mm



nVent RAYCHEM Cable Clips

Cable Clips can be attached to the reinforcement bar (of 2.5 mm of diameter) in all directions (along or across the bar). They can click on the top or on the bottom bar. On a cross section of the reinforcement bar, the Cable Clip is designed to be attached to both the top and the bottom bar securing the cable strongly in place.

The cable does snap into the Cable Clip. The clip holds the cable in place so the pouring of the levelling compound or screed can be done without hassle.

The Cable Clip is designed to be able to hold different cable sizes in place making it compatible with the T2Blue, T2Black and T2Green cables.

It is recommended to use about 1 clip every 150 mm (~65 clips per m² with a cable spacing of 100 mm).

nVent RAYCHEM Glue Sticks

The Glue Sticks attachment method is the traditional attachment method for the underfloor heating cables. Secure the cable in place using the glue gun on one end of the cable run, then on the other end and then add glue dots all along the cable length of the cable (at every 200 mm).



PRODUCT LIST

| Description | PCN | Content | Average use per m ² | T2Blue | T2Black | T2Green |
|--------------------------|--------------|----------------|--------------------------------|--------|---------|---------|
| T2Black Cable Guides | 1244-022788 | 12 Guides | 9 guides/m ² | | x | |
| Floor Heating Cable Clip | 1244-022839 | 250 Clips | 65 clips/m ² | x | x | x |
| Glue Sticks box | 503052-000 | 70 Glue sticks | 2 sticks/m ² | x | x | x |
| Glue Sticks pack | 6012-8949540 | 10 Glue sticks | 2 sticks/m ² | x | x | x |

PACKAGING DIMENSIONS

| Description | Packaging | Length mm | Width mm | Height mm |
|--------------------------|-----------|-----------|----------|-----------|
| T2Black Cable Guides | Pin Pack | 400 | 100 | 15 |
| Floor Heating Cable Clip | Box | 144 | 80 | 60 |
| Glue Sticks box | Box | 186 | 108 | 101 |
| Glue Sticks pack | Pin Pack | 230 | 80 | 20 |

United Kingdom

Tel 0800.969.013
salesthermaluk@nVent.com

Ireland

Tel 1800.654.241
salesIE@nVent.com



Our powerful portfolio of brands:

CADDY ERICO HOFFMAN RAYCHEM SCHROFF TRACER