

ELECTRICAL VEHICLE INVERTER FREE-STAND ENCLOSURE (S-536447)



INDUSTRY STANDARDS

UL 50, 50E Listed; Type 3R; File No. E27567 cUL Listed per CSA C22.2 No 94; Type 3R File No. E27567
--

NEMA/EEMAC Type 3R

APPLICATION

These NEMA 3R rated Electrical Enclosures are suitable to house Electric Vehicle Inverter stations. These A30 Series electrical enclosures are available with front, or front and rear door access. The unibody construction and flexible internal mounting options provide panel and can handle heavy loads of component mounting. These enclosures are made in the USA with US steel for EV Infrastructure projects.

FEATURES

- US Made with US Steel
- Unibody design for high weight-load requirements and environmental protection
- Open plinth base for easy field installation
- Lifting Eyes for easy handling and transportation
- 3-point latches operated by oil-tight lockable handle for tamper resistance
- Water trough over door to prevent water ingress
- Concealed, easy-to-remove stainless steel hinges for easy installation
- Optional panels and rack mount angles can be mounted anywhere along channels for easy installation
- Provisions for mounting Compact LED Lights with occupancy/vacancy sensors.
- Anti-corrosive paint and protective coating to maximize life even in tough weather environments

FINISH

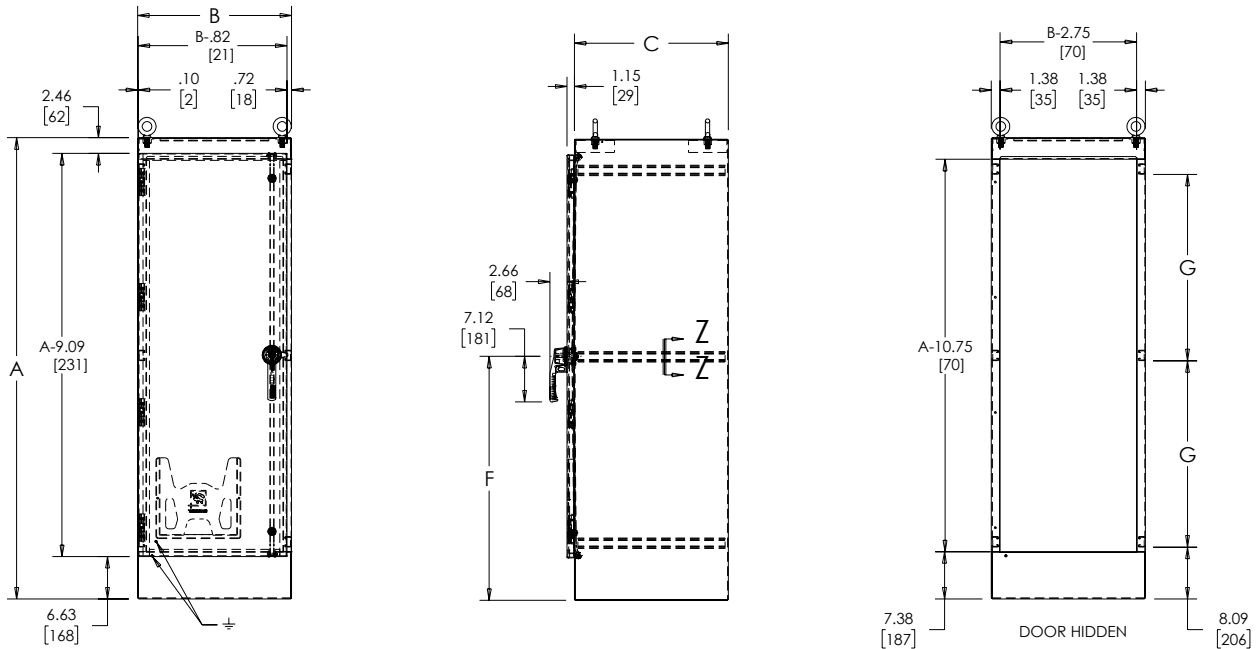
- Painted white interior and exterior with powder coated finish

Standar Product **One-/Two-Door Single-/Dual-Access**

Catalog Number	AxBxC in./mm	Access	Number of Doors	Number of Lifting Eyes	Number of Rack Units	F in./mm	G in./mm	H in./mm	J in./mm
US603624FSG	60.06x36.06x24.06 1526x916x611	Single	1	4	28	32.03 814	23.12 587	-	-
US722424FSG	72.06x24.06x24.06 1830x611x611	Single	1	4	35	38.03 966	29.12 740	-	-
US722424FSDAG	72.06x24.06x24.06 1830x611x611	Dual	1	4	35	38.03 966	29.12 740	-	-
US723024FSG	72.06x30.06x24.06 1830x764x611	Single	1	4	35	38.03 966	29.12 740	-	-
US723024FSDAG	72.06x30.06x24.06 1830x764x611	Dual	1	4	35	38.03 966	29.12 740	-	-
US723624FSG	72.06x36.06x24.06 1830x916x611	Single	1	4	35	38.03 966	29.12 740	-	-
US723624FSDAG	72.06x36.06x24.06 1830x916x611	Dual	1	4	35	38.03 966	29.12 740	-	-
US723636FSG	72.06x36.06x36.06 1830x916x916	Single	1	4	35	38.03 966	29.12 740	-	-
US723636FSDAG	72.06x36.06x36.06 1830x916x916	Dual	1	4	35	38.03 966	29.12 740	-	-
US722436FSDAG	72.06x24.06x36.06 1830x611x916	Dual	1	4	35	38.03 966	29.12 740	-	-
US724824FSDG	72.06x48.06x24.06 1830x1221x611	Single	2	4	35	38.03 966	29.12 740	23.88 607	24.03 610
US724824FSDAG	72.06x48.06x24.06 1830x1221x611	Dual	2	4	35	38.03 966	29.12 740	-	-

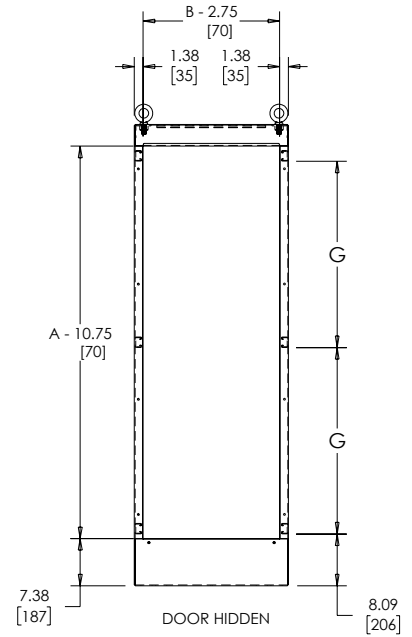
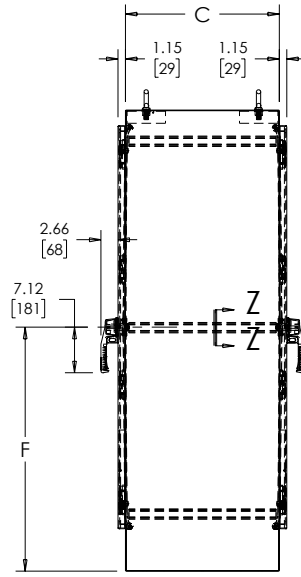
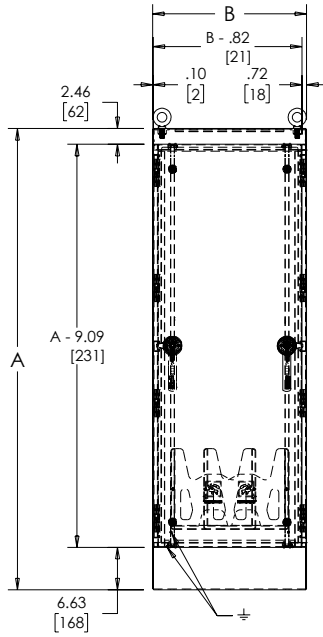
The EV Inverter Free-Stand enclosure is a US made product to support EV Infrastructure projects. The enclosure is NEMA 3R rated to maintain compliance with industry standard. This enclosure is based off of the A30 platform with new features to provide durability and extend the lifetime of EV Charging Inverters.

ONE-DOOR, SINGLE ACCESS

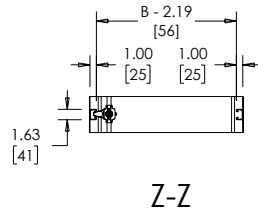
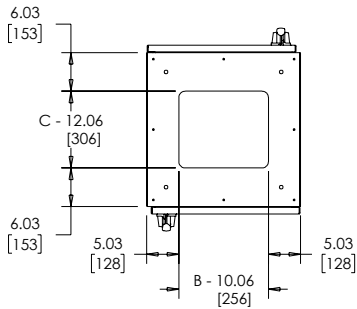


89242375

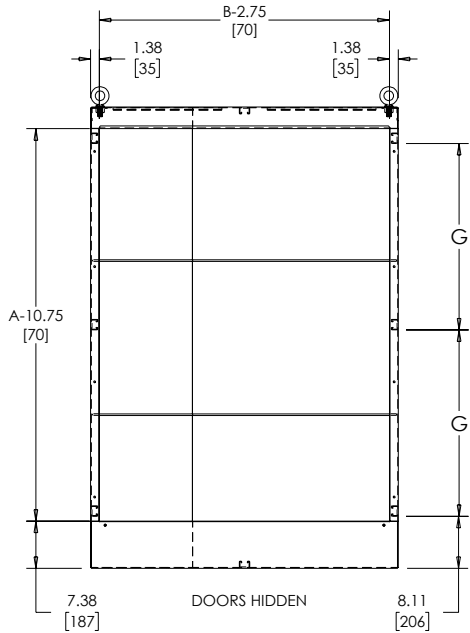
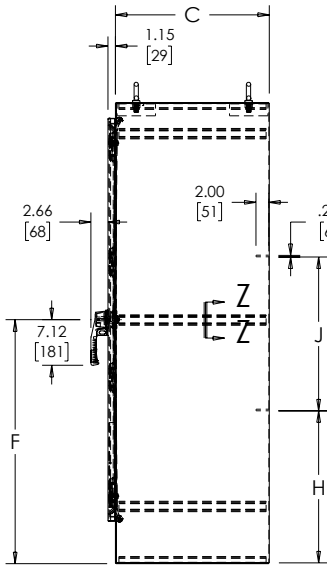
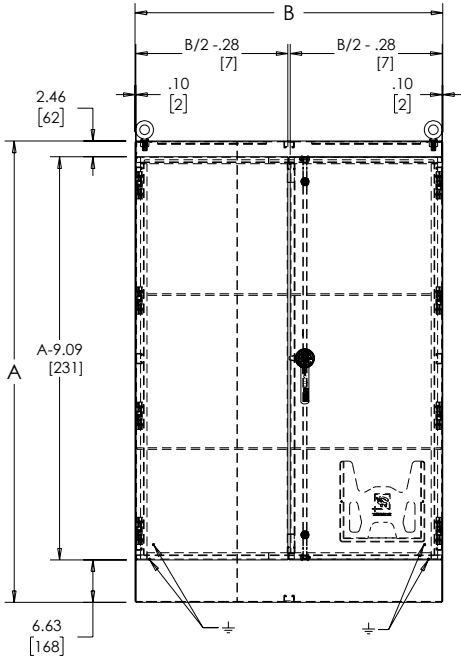
ONE-DOOR, DUAL ACCESS



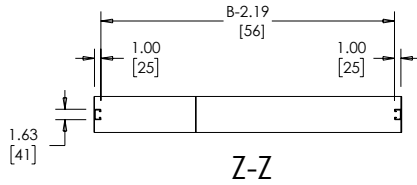
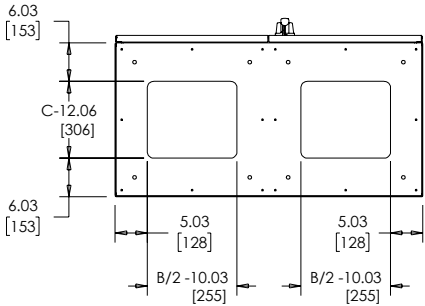
89242454



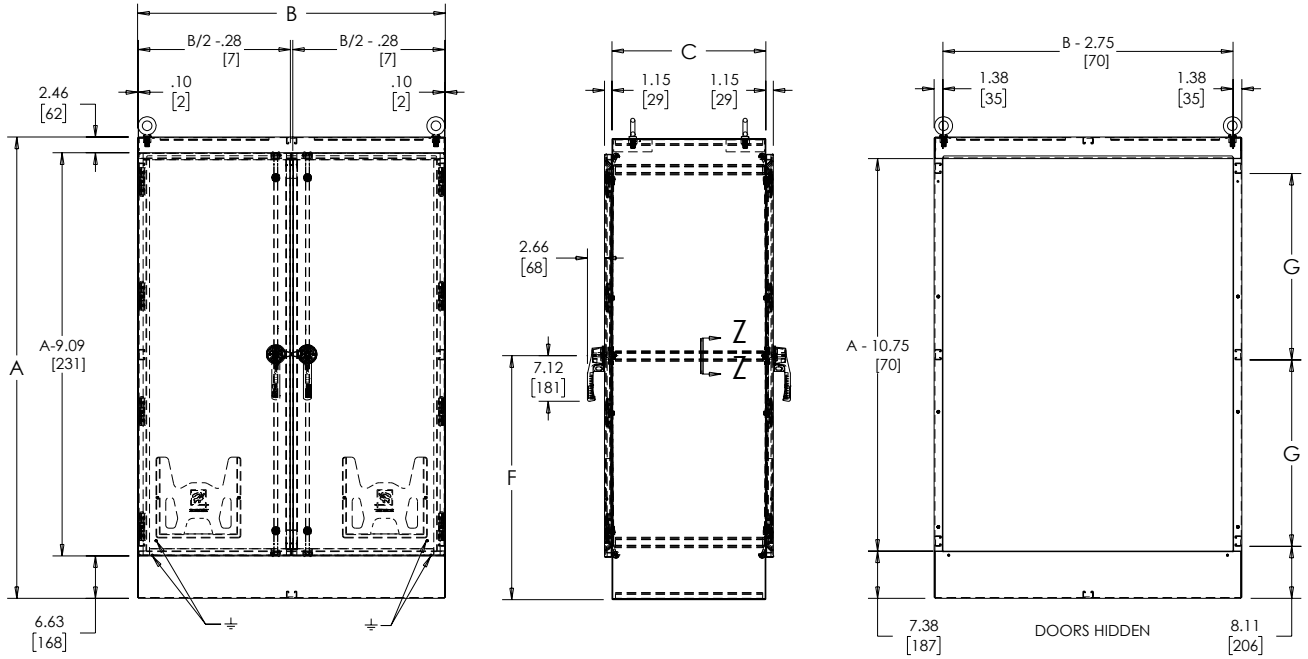
TWO-DOOR, SINGLE ACCESS



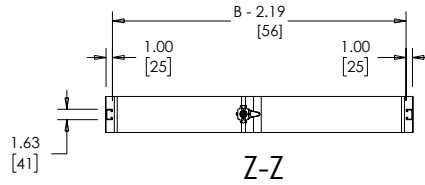
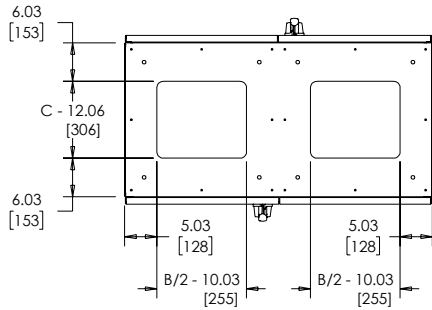
89242376



TWO-DOOR, DUAL ACCESS



89242455



Notes