

CONNECT AND PROTECT

# EV Charging Infrastructure Solutions

Building a reliable and sustainable future



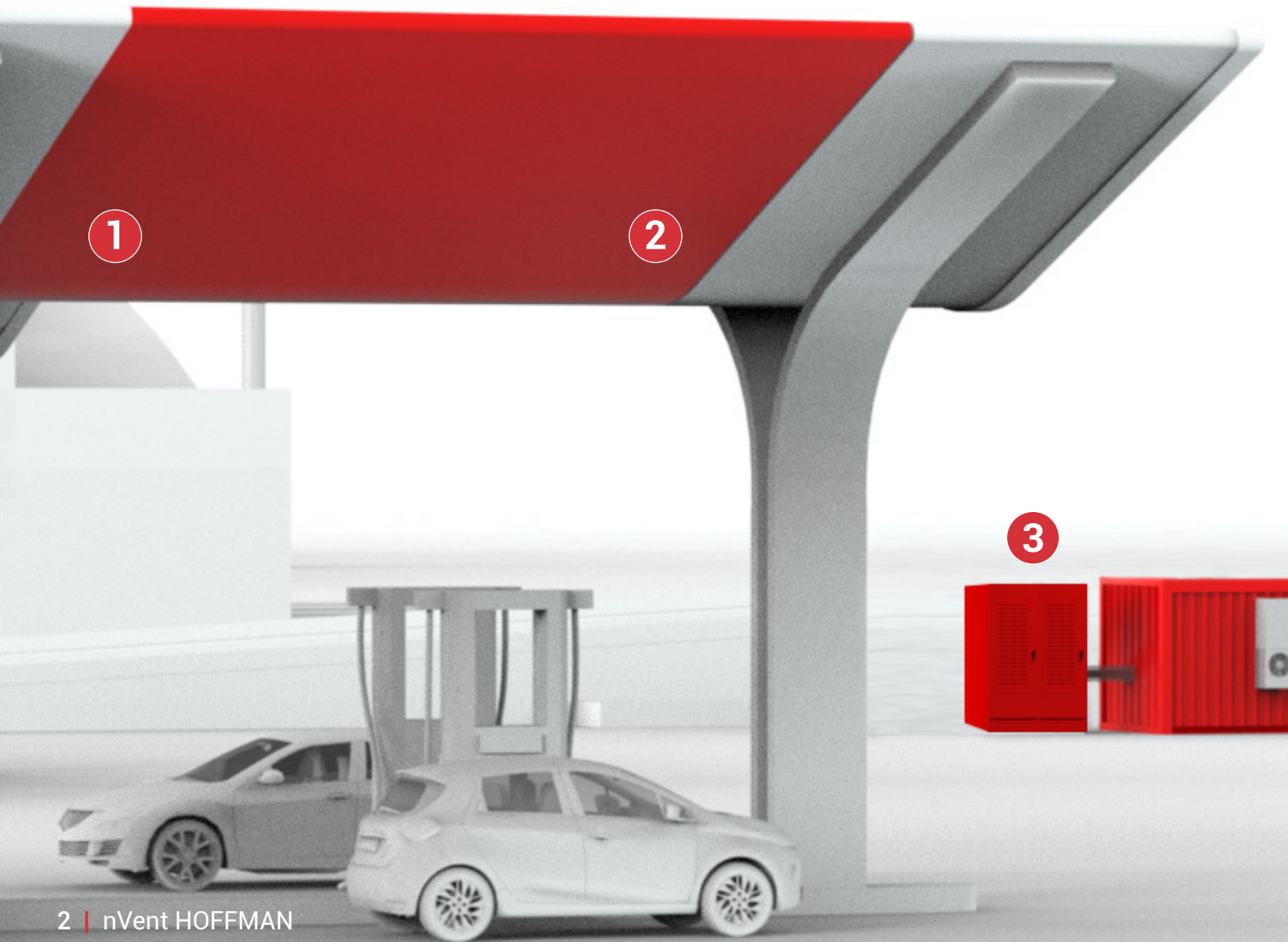
  
nvent

**HOFFMAN**

# Flexible, Progressive Solutions for Evolving Demands

We have built reliable electrical protection solutions for more than 75 years that increase uptime and improve productivity for our customers.

As the world continues to electrify and demands on electrical grid increase, we have designed reliable, durable and scalable solutions specifically for EV Charging Infrastructure applications.



# EV Charging Infrastructure Solutions

## Public Charging Station

- 1 Wireway Solutions make installation and maintenance easy, providing labor and cost savings
- 2 Outdoor Wall-Mounted Enclosures and Junction Boxes provide superior ease of access without sacrificing a secure seal

## AC/DC Charging Inverter or DC/DC Converter

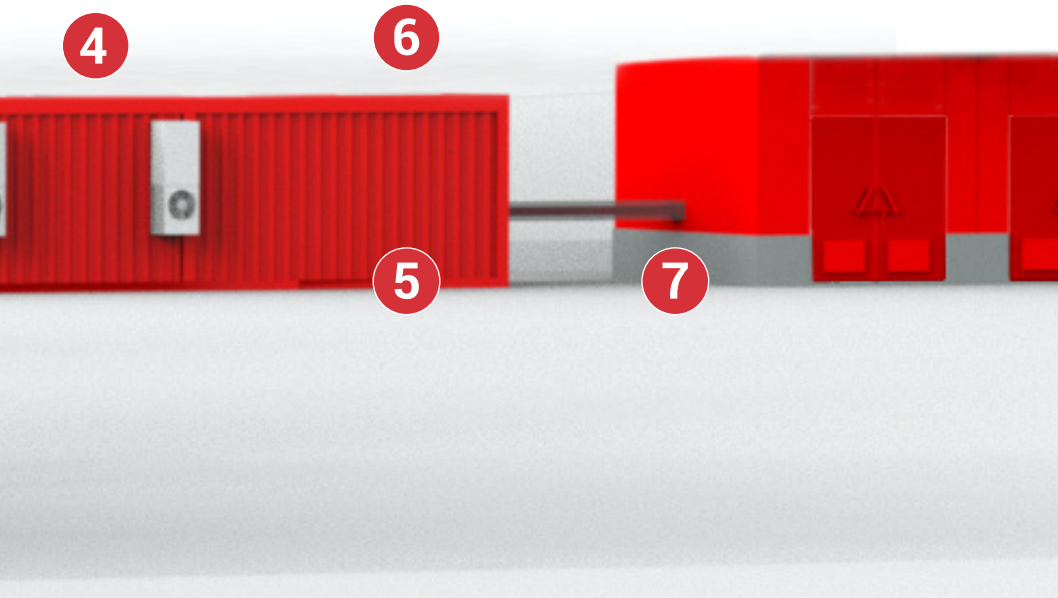
- 3 NEMA 3R Electrical Enclosures with passive cooling and anti-corrosive protection for reliable outdoor performance and durability

## Battery Energy Storage Systems (BESS)

- 4 Outdoor-rated Air Conditioning with Remote Access Control for optimized performance of electronics
- 5 Power Connections and Grounding Solutions for reliable protection of property and personnel
- 6 Battery Energy Storage Systems provide a wide range of standard enclosures, climate control products and accessories that provides ultimate protection and reliability for all energy storage applications

## Transformer

- 7 Cable Entry Systems feature sealed entrance points for cables and maintains high ingress protection ratings against dust, water and vibration



## Scalable and Durable EV Charging Infrastructure Systems



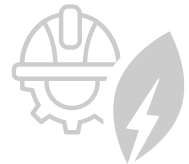
### Resiliency and Protection

Our solutions add resiliency to critical systems by helping keep them safe from natural and man-made disruptions



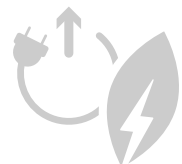
### Lifespan and Serviceability

Our solutions extend the lifespan of our customers' systems, reducing waste and lowering cost



### Safer Solutions

Our solutions improve end-user safety and help our customers enhance the safety of their operations



### Customer Productivity

Our solutions reduce labor cost in design and installation, improve utilization and reduce total cost of ownership

# Enclosure for Electric Vehicle Charging Inverters

Get the reliability and durability needed to protect critical EV Infrastructure applications with nVent HOFFMAN Enclosures for EV Charging Inverters. Proudly made in the USA with US steel to meet NEVI requirements needed for government funding. Designed for scalability and ease of use, our solutions help drive a sustainable and electrified future.



MADE IN THE USA WITH US STEEL



UL TYPE 3R DESIGN



RACKING PROVISIONS AVAILABLE



UNIBODY FOR HIGH WEIGHT-LOAD REQUIREMENTS



LOUVER PACKAGES AVAILABLE FOR PASSIVE COOLING



SINGLE AND DOUBLE DOOR



ANTI-CORROSIVE PROTECTIVE COATING

## NEVI-ready enclosure for the following applications:

- Level 3 DC Fast-Charging station (200 to 340 kw)
- Commercial & fleet charging (340 kw to 800 kw)
- EV charging inverters, conversion stations and Battery Energy Storage Systems

# Key Features and Benefits

## Eye Bolts

- Provides easy loading onto EV pad at installation site

## US Steel

- Made in the USA with US Steel to meet requirements for NEVI funded projects

## PowerGlide Handles

- Padlock handle provides tamper resistance

## Stainless Steel Hinges

- Maintains UL Type 3R rating and provides corrosion resistance

## Two Door (front & back)

- Easy access for assembly and maintenance
- Louver packages available for passive cooling

## Large Open Base

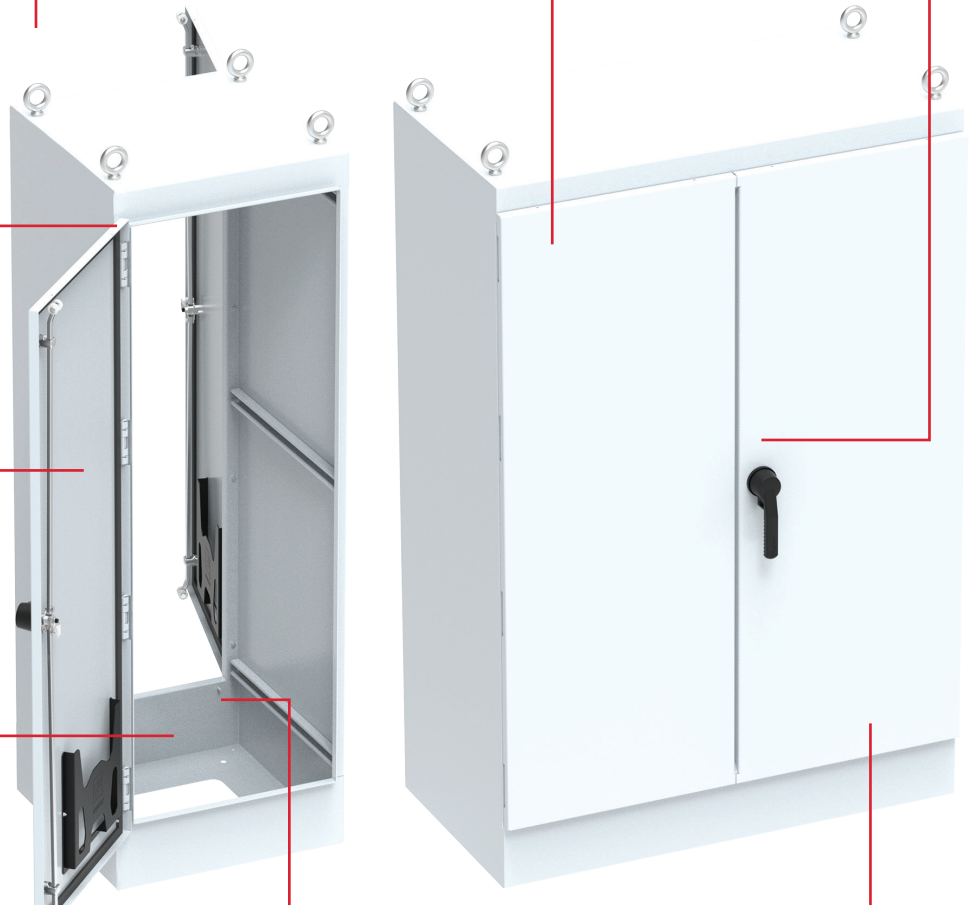
- Allows OEMs and integrators to easily dropship heavy inverters directly to the pad
- Contractors can easily make electrical connections without re-lifting on the jobsite

## Drainage

- Provides dissipation for any moisture ingress
- Maintains UL Type 3R rating

## Heavy Duty Plinth

- Strong support for heavy loads (up to 3000 lbs)
- Anti-corrosive protective coatings to mitigate rusting



# Durable EV Inverter Solutions for Maximum Uptime

Protect your mission critical EV Infrastructure systems, components, and complex mounting configurations with nVent HOFFMAN Enclosure for EV Charging Inverters. Built to handle the most challenging operating conditions and protect from corrosives, water, broad temperature swings, humidity and UV rays, our solutions are designed for ease of use and reliability, while improving end-user safety and installation time.



## Standard Product One-/Two-Door Single-/Dual-Access

CATALOG NUMBER	A X B X C IN./MM	ACCESS	NUMBER OF DOORS	NUMBER OF RACK UNITS
US603624FSG	60.06 x 36.06 x 24.06 1526 x 916 x 611	Single	1	28
US722424FSG	72.06 x 24.06 x 24.06 1830 x 611 x 611	Single	1	35
US722424FSDAG	72.06 x 24.06 x 24.06 1830 x 611 x 611	Dual	1	35
US723024FSG	72.06 x 30.06 x 24.06 1830 x 764 x 611	Single	1	35
US723024FSDAG	72.06 x 30.06 x 24.06 1830 x 764 x 611	Dual	1	35
US723624FSG	72.06 x 36.06 x 24.06 1830 x 916 x 611	Single	1	35
US723624FSDAG	72.06 x 36.06 x 24.06 1830 x 916 x 611	Dual	1	35
US723636FSG	72.06 x 36.06 x 36.06 1830 x 916 x 916	Single	1	35
US723636FSDAG	72.06 x 36.06 x 36.06 1830 x 916 x 916	Dual	1	35
US722436FSDAG	72.06 x 24.06 x 36.06 1830 x 611 x 916	Dual	1	35
US724824FSDG	72.06 x 48.06 x 24.06 1830 x 1221 x 611	Single	2	35
US724824FSDAG	72.06 x 48.06 x 24.06 1830 x 1221 x 611	Dual	2	35

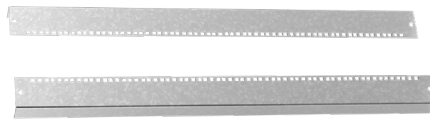
# Accessories

Provide value-added modifications to enclosures with easy-to-select, configure and install nVent HOFFMAN accessories. Designed to add in-field convenience and reduce assembly time increase productivity safety solutions to protect people and critical components.

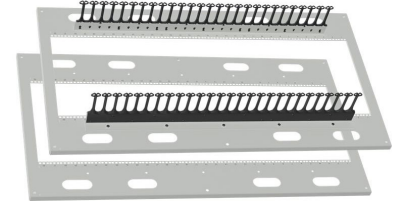
**Seismic Rating Kits** For free-stand single door enclosures to meet GR-63-CORE Zone 4 seismic standards include the following accessories (purchased separately):



**Mounting Plate Kit**



**Seismic Panel Mounting Kit**



**Seismic Rack Panel Kit**

**Drip Shield Kit** Concealed hinges protect door from dripping water ingress and settling dust providing long term reliability of the electronics inside.

**Side-Mount Filter Fans** quickly install into enclosure with a click-fit design; no tools or screws required for easy filter replacement.

**Rack Mounting Angles** used to install standard rack mounted equipment in enclosures that have back panel mounting provisions for easy installation.

**Door Stop Kit** designed for use on nVent HOFFMAN enclosures to secure the door in an open position.

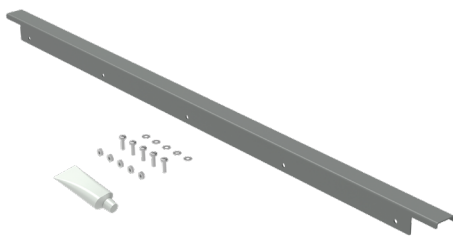
**Compact LED Light** available with or without motion sensor. Simple through-wiring based on a plug-and-play system. Suitable for global use with a voltage range of 24-240V (AC/DC).

**Filter Fan Shroud** protect filter fan and exhaust grill from wind-driven rain and high-pressure hose water.

**nVent ERIFLEX Power Distribution** delivers low voltage power solutions that reduce total installed cost and increase design flexibility.



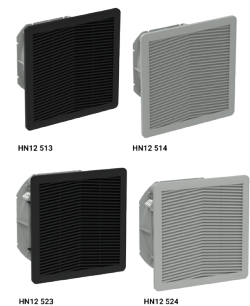
**Rack Mounting Angles**



**Drip Shield Kit**



**nVent ERIFLEX Power Distribution**



**Side-Mount Filter Fans**

*Additional accessories available to meet your needs, to learn more visit [nvent.com/hoffman](http://nvent.com/hoffman)*

**For more information about EV Charging Infrastructure Solutions, visit the nVent e-Mobility website**



Visit the nVent  
e-Mobility site

Our powerful portfolio of brands:

**CADDY ERICO HOFFMAN ILSCO RAYCHEM SCHROFF**



**nVent.com/HOFFMAN**