



CONNECT AND PROTECT

Safer systems ensure
a more secure world


nvent

HOFFMAN

At nVent, we believe safer systems ensure a more secure world. The electrification of everything is driving the need to connect and protect electrical systems. We help ensure reliability, even in unexpected circumstances. Our solutions provide resiliency, safety and security to mission critical solutions and infrastructure around the globe.

We can help you find solutions to connect and protect new technologies across multiple industries and applications.

ESG has been a critical part of who we are and how we have operated since the beginning of our company. At nVent, we focus our ESG efforts in three areas: People, Products and Planet. We have made meaningful progress across these pillars. These efforts will continue as we seek to reinforce our culture, develop innovative and sustainable solutions and do our part to combat global climate change.

nVent





OUR FOCUS AREAS

A culture focused on inclusion, diversity, employee engagement, safety and integrity



PEOPLE

OUR GOALS 2025

- Increase representation of women in management globally by 20%
- Increase representation of racially diverse U.S. professional employees by 25%
- Reach an employee safety total recordable incident rate of <0.50



OUR FOCUS AREAS

Innovative solutions that deliver efficiency, safety and reduced resource consumption, creating a more sustainable future



PRODUCTS

OUR GOALS 2025

- Reach >90% of products in our active New Product Introduction funnel with a positive impact in at least one of our three Products ESG categories
- Make product environmental data 100% digitally accessible to customers



OUR FOCUS AREAS

Responsible energy, waste and water management to help protect our natural resources



PLANET

OUR GOALS 2025

- Achieve 50% reduction in Scope 1 and Scope 2 greenhouse gas emissions
- Reach >25% renewable energy consumption

nVent HOFFMAN

nVent HOFFMAN designs products to ensure the optimum protection for your equipment and employees and we stand on guard, with service and sales support around the world, to design solutions that will keep your systems running smoothly.

For more than 75 years, customers have relied on nVent HOFFMAN to deliver the industry's most comprehensive portfolio. Paired with panel shop automation solutions, our high-quality of enclosures and cooling offerings are suitable for vast range of verticals and applications. Whether it is Extreme Environments, Food & Beverage, Industrial Networking Solutions, Industrial Automation, Energy or Critical Infrastructure, our local sales and product specialists are here for you to ensure your critical controls & components and your business is protected.



We offer more than 13,000 standard products as well as tailored solutions with the lead times you need to keep your project on schedule, and we will continue to develop new solutions to meet our wide variety of customer applications.

Many customers operate globally and require identical products sourced locally. nVent HOFFMAN has a complete range of IEC and NEMA products with international certifications available on a global scale. This simplifies engineering and procurement.

We will continue to create innovative enclosures and cooling solutions to meet the evolving needs of our customers, supported by a strong local team, with comprehensive product documentation available in local language.

Express Customization

Modify the most popular nVent HOFFMAN enclosures



- Select from more than 1,500 enclosure and panel models
- Add 2D holes and cutouts where you need them
- Choose your paint from a 28-color palette, including OSHA safety colors



LEARN MORE

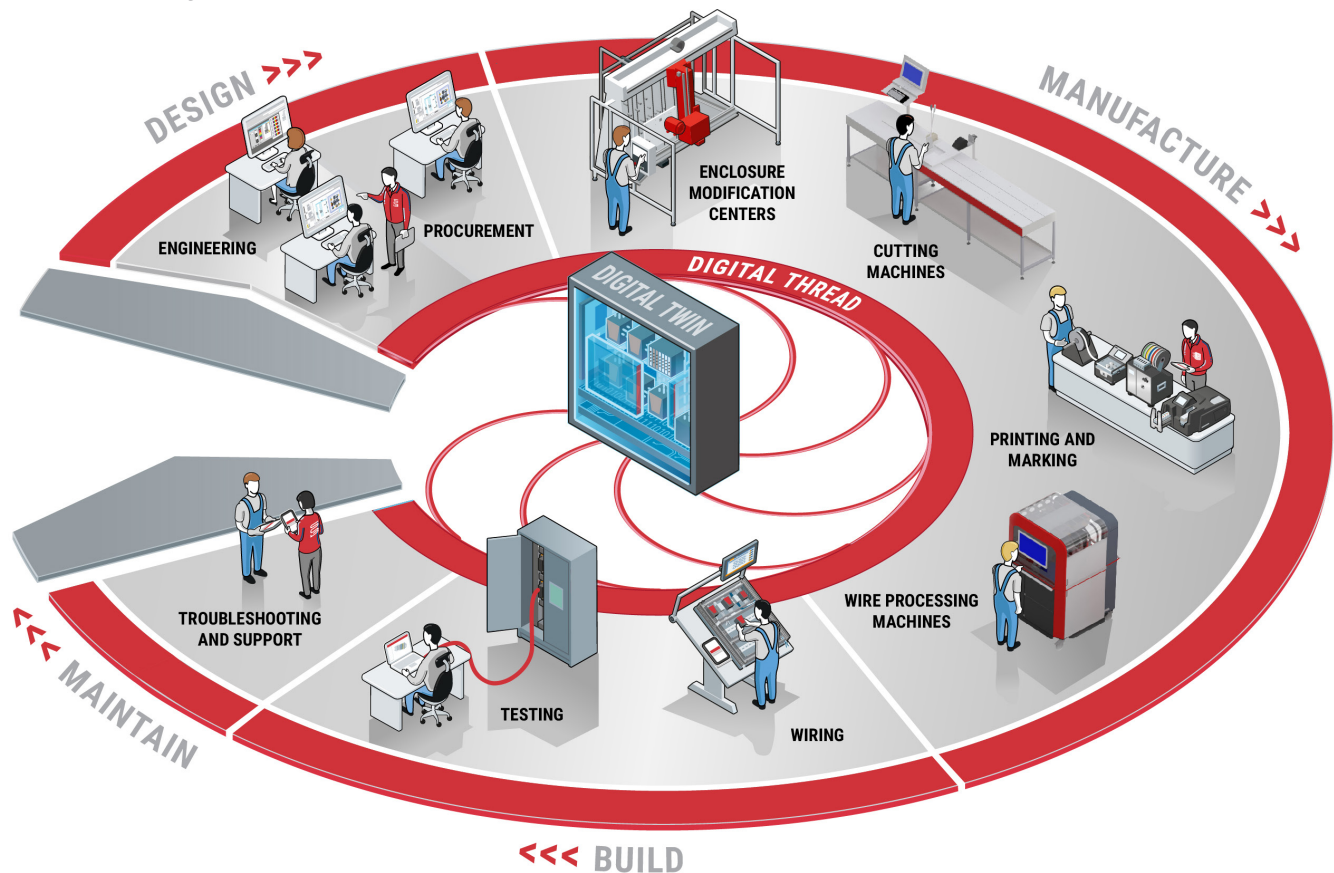


NEW at nVent HOFFMAN

Panel Shop Automation

Simplifying electrical engineering,
driving productivity

Design to Manufacturing Software
Powered by Zuken E3.series



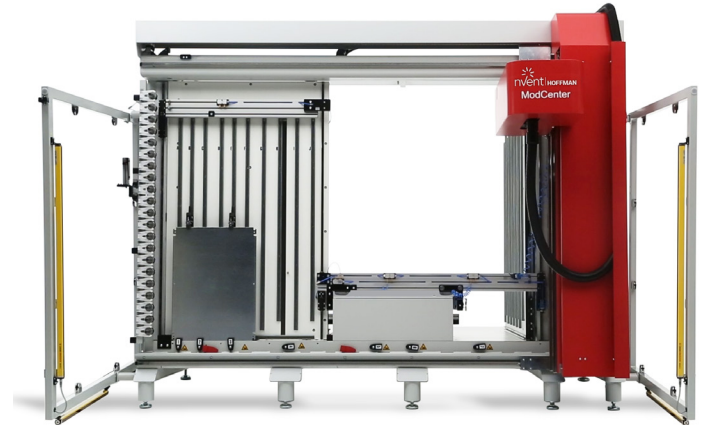
- Simplifying design
- Connecting engineering to manufacturing
- Capturing and deploying knowledge
- Solving the shortage of engineers and skilled labor
- Accelerating profitable growth



LEARN MORE

Precision automation for holes and cutouts reduces lead times and improves the bottom line

- Modification equipment for panel builders enables fast modification of stocked items for quick shipping
- Fast machining of various materials including: mild steel, stainless steel, copper, aluminum, fiberglass and thermoplastics
- Shorter lead times for customers and lower costs for panel builders

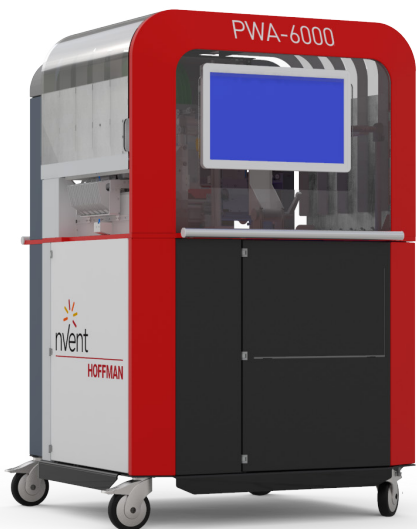


Modification Center (ModCenter)



LEARN MORE

Optimizes the production of wires reducing the processing time up to 75%



Personal Wiring Assistant (PWA-6000)

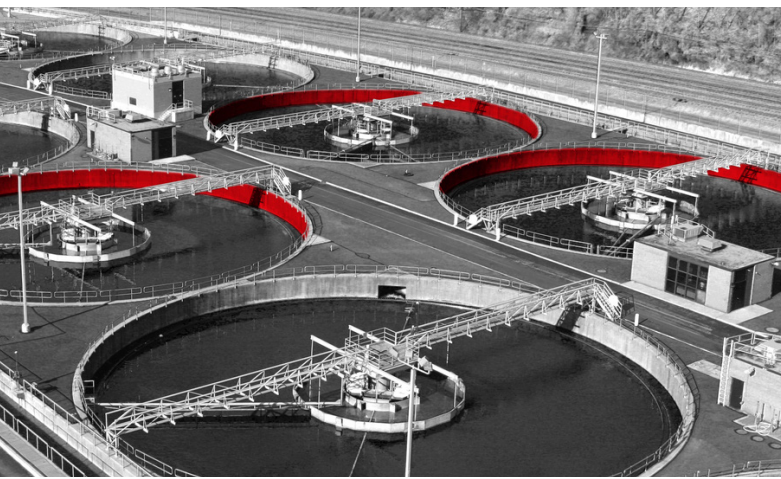
- Human Machine Interface with modern operating solution with 21.5-inch touchscreen
- The machine has automated wire feeding with 12 different wires
- An external accessory is available for storage of additional wires that can feed the machine reducing the switching times



LEARN MORE

NEW at nVent HOFFMAN

Ultimate protection in the
most demanding environments



- Ideally suited for water, wastewater, oil and gas, coastal/offshore, petrochemical, pharmaceutical, mining, and other extreme environments
- Designed inside and out for durability, reliability and easy maintenance
- Certified to UL Type 4X, IEC IP66, IP69, and IP69K



LEARN MORE

*Extreme Environments
Enclosures and Air Conditioners*

FEATURING nVent HOFFMAN



< Best

HyShed Enclosures



< Better

WaterShed Enclosures



< Good

Concept Enclosures

Enclosures that simplify sanitary wash-down cleaning procedures

- Gaskets with proper sealing paired with hygienic enclosure design to prevent water ingress to prevent harboring of bacteria
- Climate controls that protect against condensation while maintaining internal electrical components longer
- IEC IP66, IP69, IP69K



LEARN MORE



NEW at nVent HOFFMAN

Redefine simplicity when
ordering and assembling

- Products include mild steel and stainless steel – floor stand, wall mount and terminal boxes.
- Accelerate the specification and installation process with interchangeable accessories and tool-free assembly.
- Streamline ordering with single, global part number.



LEARN MORE



Global IEC

Lighting solution designed with
simplicity in mind with 550 lumens

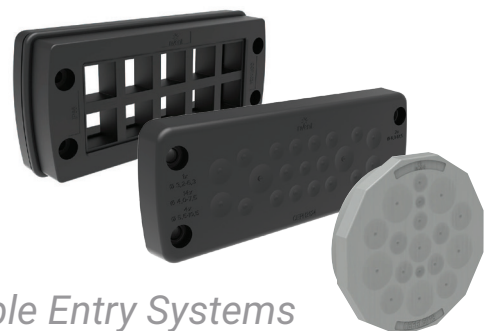


*Compact
LED Lights*

- Fast and easy assembly with tool-free magnetic installation or screw mounting
- Work more efficiently and accurately with rotation to illuminate targeted areas
- UL Recognized Components, CE/ENEC Certified and IEC IP 20

Wire feed through and assembly made faster and easier

- Saves space with many cable entries within a small space
- Saves time by eliminating the need to drill several holes
- Retrofittable, adding flexibility for maintenance or future updates



Cable Entry Systems

FEATURING nVent HOFFMAN

Excellent UV performance and
chemical resistance.



Non-Metallic Wall Mount Enclosures

Available in polycarbonate, an excellent general-purpose material and polyester, the premier option for chemical resistance.



LEARN MORE

- Lightweight with exceptional impact resistance and strength
- High-performing, cost-effective solution
- Available in a variety of hinge and door options to meet your needs
- Quick-ship standard sizes available

Protection against water, dirt, corrosive agents and other contaminants

- Excellent choice where space is at a premium
- UL and NEMA Type 4, 4X,12



ProTek Wall Mount Enclosures



LEARN MORE

Learn More About All Featured Products

Visit Our Literature Reference Center



LEARN MORE

Our powerful portfolio of brands:

CADDY ERICO HOFFMAN RAYCHEM SCHROFF TRACER



nVent.com

©2022 nVent. All nVent marks and logos are owned or licensed by nVent Services GmbH or its affiliates. All other trademarks are the property of their respective owners. nVent reserves the right to change specifications without notice.