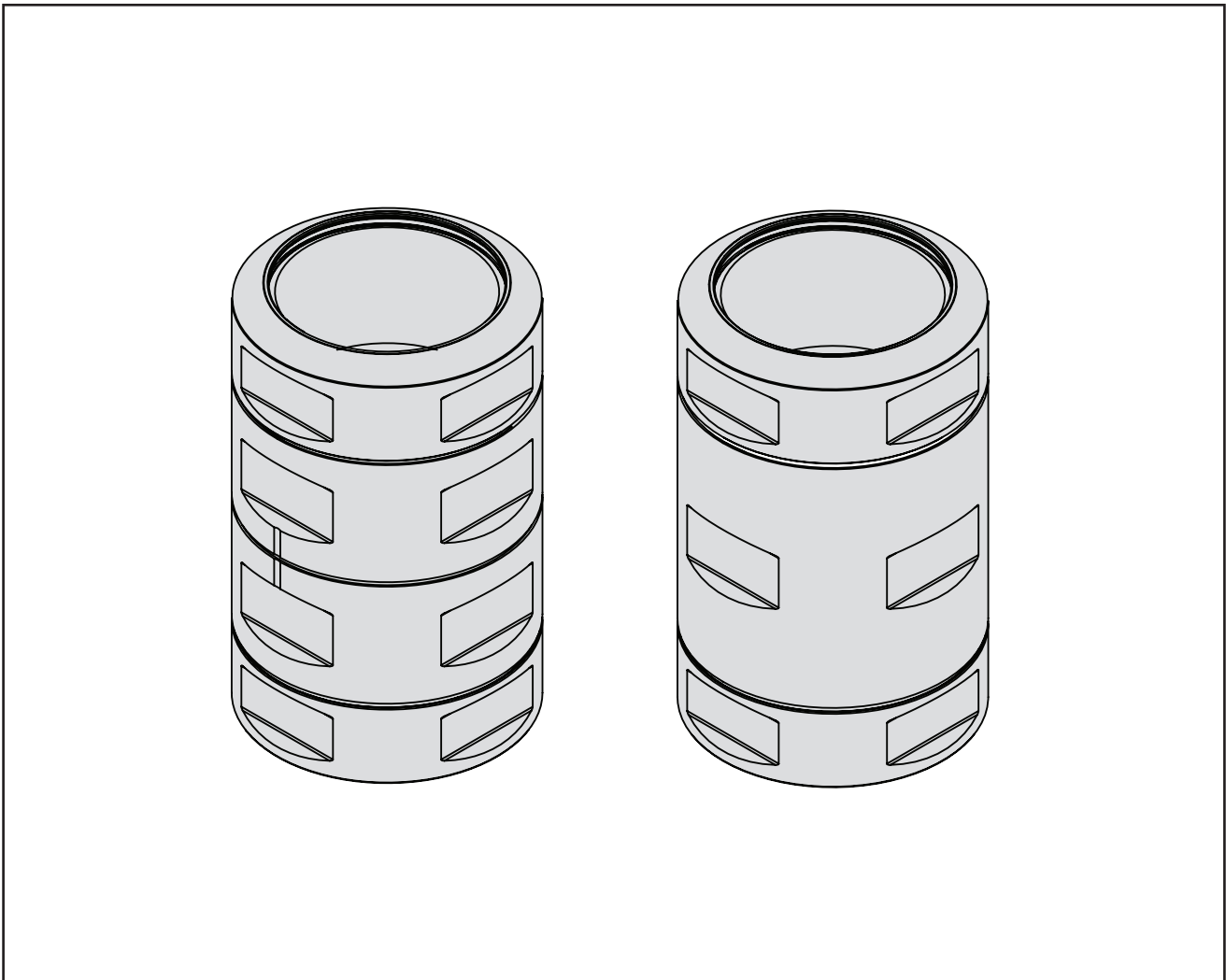
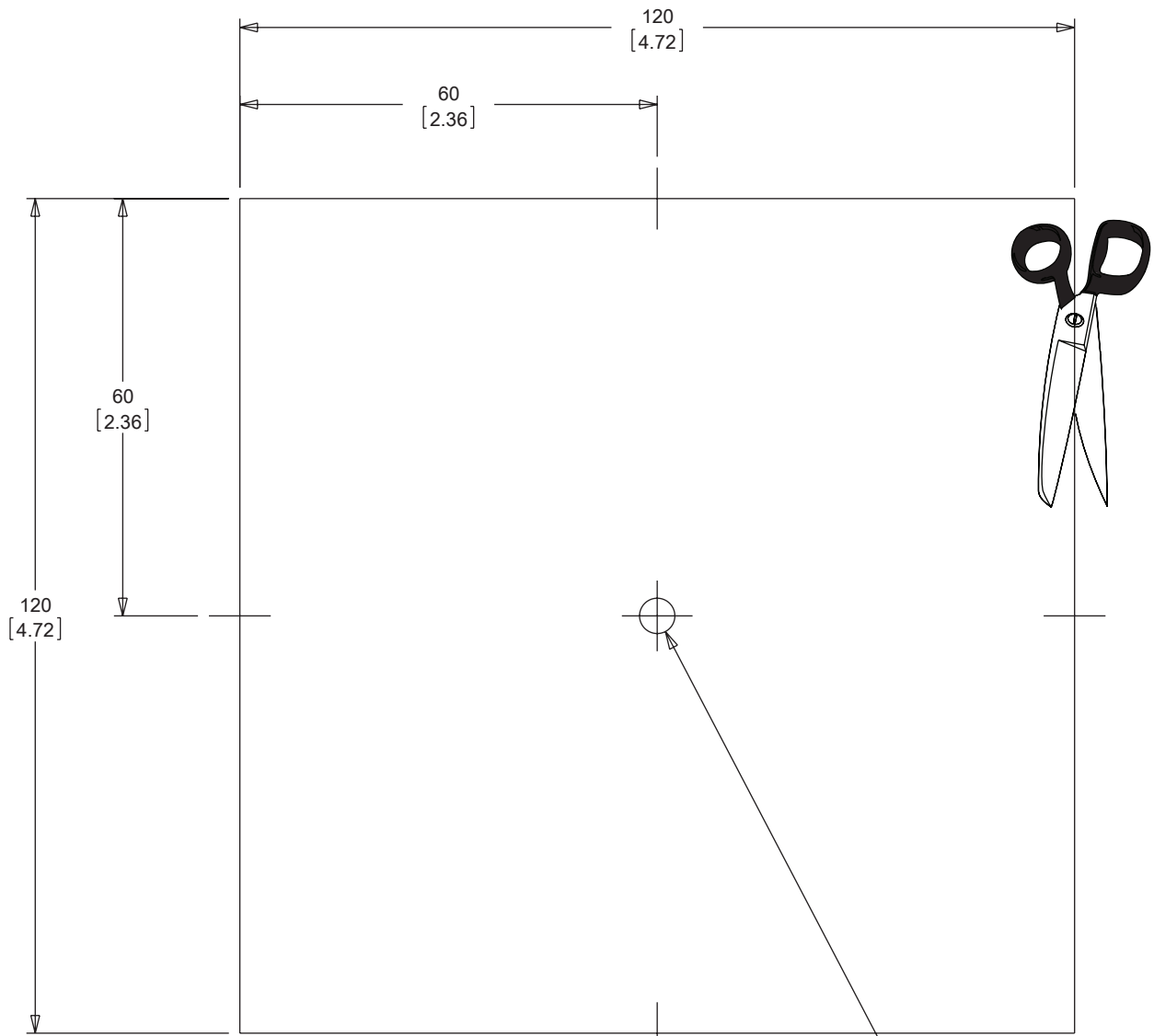


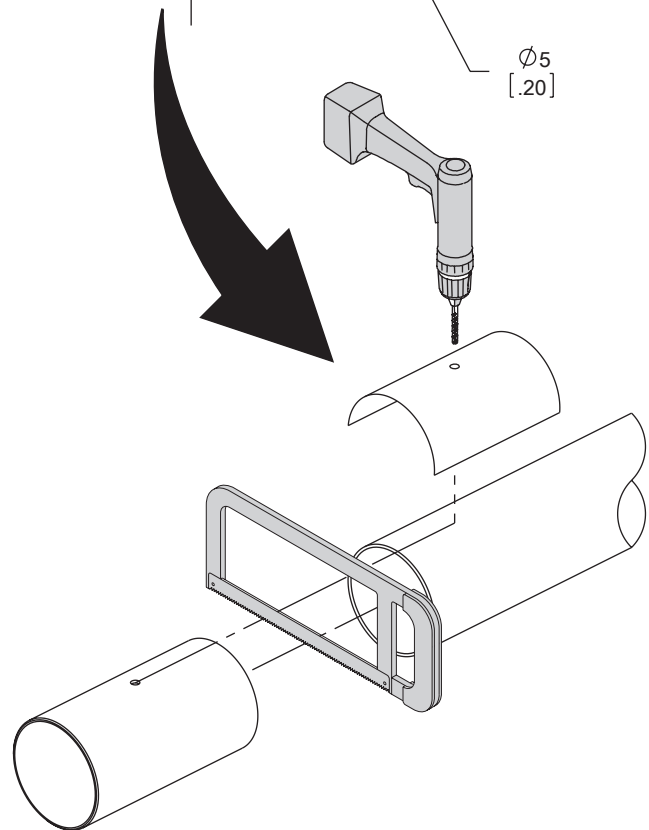
## Syspend


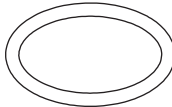
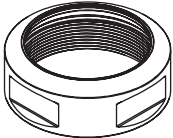


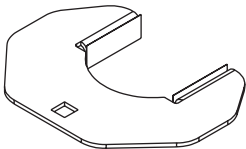


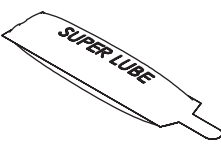





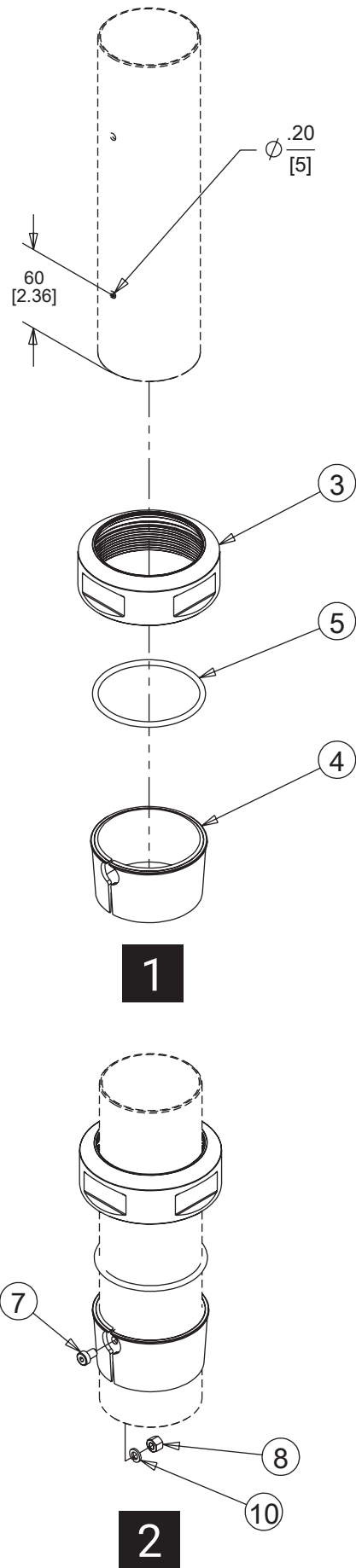
**NOTE:**

**Cutout template must be printed at 1:1 scale. Measure after printing to verify dimensions.**



<p>1</p>  <p>(1x)</p>	<p>2</p>  <p>(2x)</p>
<p>3</p>  <p>(2x)</p>	<p>4</p>  <p>(2x)</p>
<p>5</p>  <p>(2x)</p>	<p>6</p>  <p>(1x)</p>
<p>7 M5-.08X8MM SS</p>  <p>(2x)</p>	<p>8 M5</p>  <p>(2x)</p>
<p>9</p>  <p>(2x)</p>	<p>10 #10 SS</p>  <p>(2x)</p>

NEMA TYPE 4, 4X



**3**

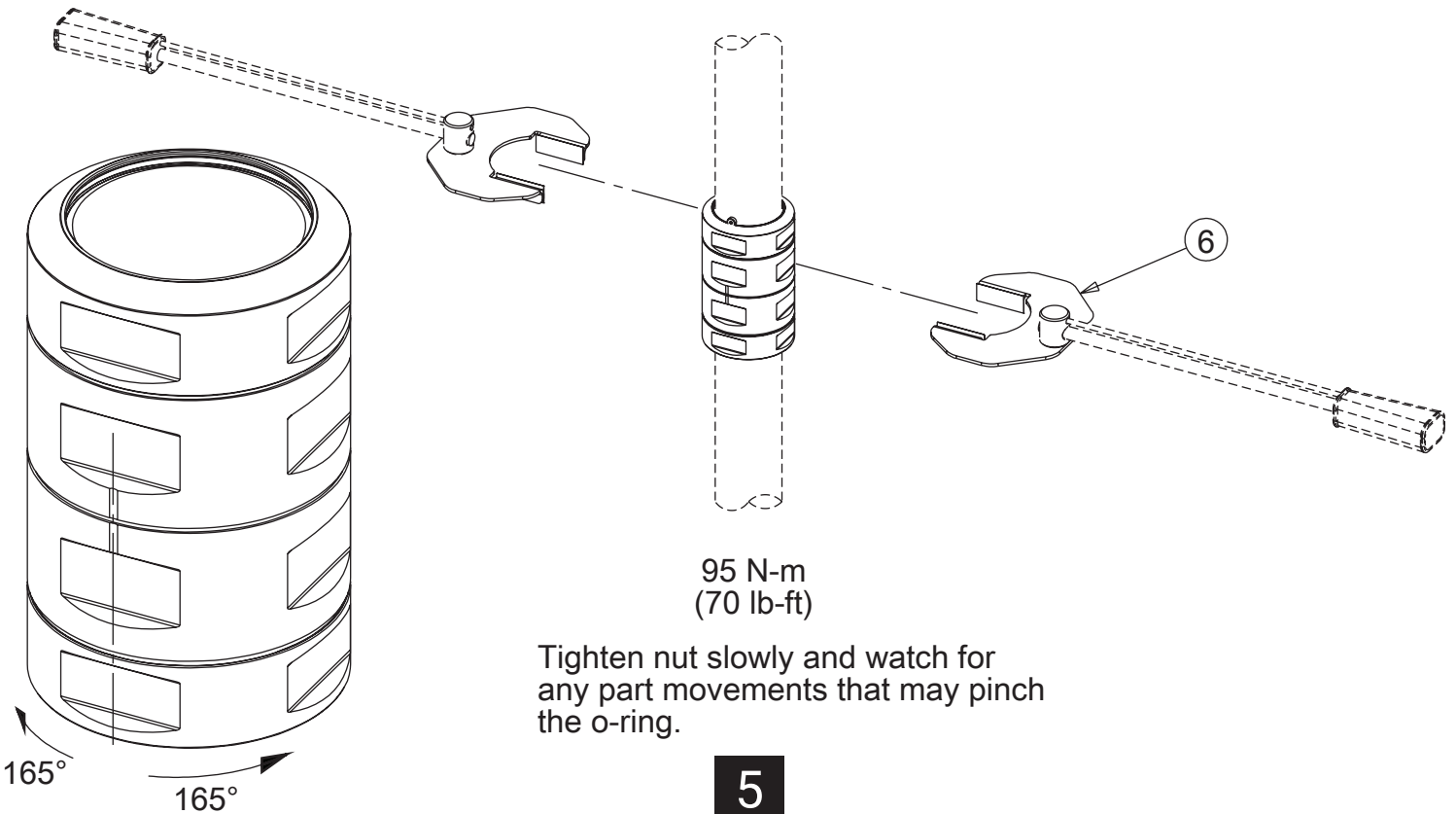


- a. Install tube/sleeve into fitting. Be sure safety screw is fully seated in fitting cutout.
- b. Push sleeve down into fitting until it is tight.
- c. Be sure top surface of sleeve is aligned at split, or left side is lightly lower than right.
- d. Place o-rings in position dry.

**4**



Lube top surface only of both o-rings (the surface the nut will contact)



**5**