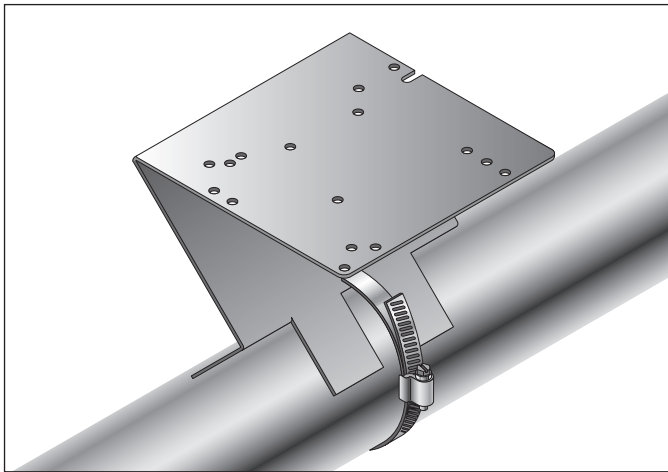




# RAYCHEM

## UMB

### Universal Mounting Bracket Installation Instructions



- Step 1** Use Chart A to select the mounting pattern figure for installation.
- Step 2** Mount the equipment according to the figure shown on page 2.

#### DESCRIPTION

The nVent RAYCHEM Universal Mounting Bracket is used to mount the thermostats and junction boxes listed in chart A.

#### TOOLS REQUIRED

- Flatblade screwdriver
- Adjustable wrench

#### KIT CONTENTS

Item	Qty	Description
A	1	nVent RAYCHEM UMB bracket
B	2	Hex head bolt (1/4-20 x 1 in)
C	2	Hex head bolt (#10-32 x .375 in)
D	2	Pan head screw (#10-32 x 1.25 in)
E	2	Pan head screw (#10-32 x .625 in)
F	2	Hex Nut (1/4-20)
G	2	Hex Nut (#10-32)
H	2	Lock Washer (1/4)
I	2	Lock Washer (#10)
J	2	Flat Washer (#10)

#### ADDITIONAL MATERIALS REQUIRED

- Pipe strap

Chart A

	Fasteners quantity/each			Mounting pattern
	8-32 bolt, nut #8 lock-washer (supplied with thermostat)	Hex head bolt (1/4-20 X 1 in), nut, 1/4 in lock-washer	Pan head screw (#10-32 x 1.25 in), #10-32 nut, #10 lock-washer, #10 flat-washer	
<b>Thermostats</b>				
AMC-1A	2			Figure 1
AMC-1B	2			Figure 1
AMC-1H		2		Figure 2
AMC-HT		2		Figure 2
E507S		2		Figure 3
AMC-F5		2		Figure 4
<b>Junction boxes</b>				
Adalet XIH		2		Figure 5
HAK-JBS, HAK-JB3 (Killark HKB boxes)		2		Figure 6
JBU-100-A(6), JBU-100-L-A			2	Figure 7

## Thermostat mounting patterns

Figure 1

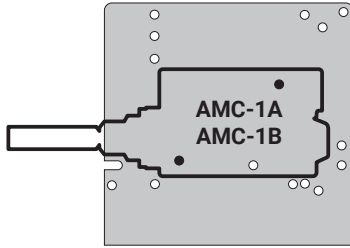


Figure 2

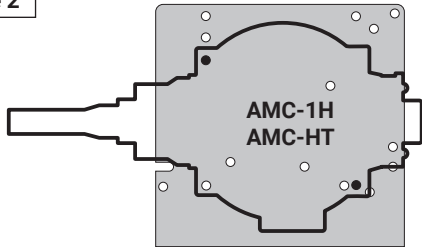


Figure 3

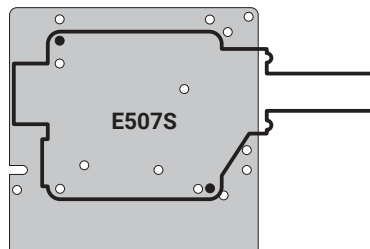
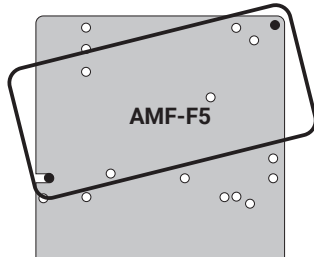


Figure 4



## Junction box mounting patterns

Figure 5

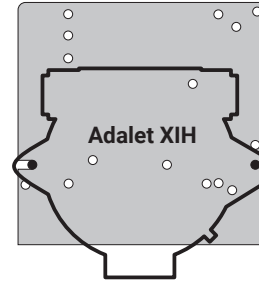


Figure 6

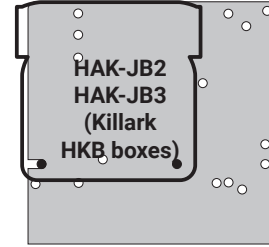
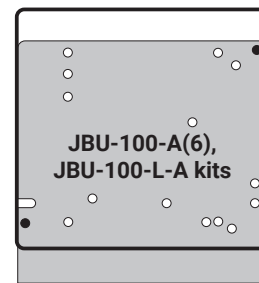


Figure 7



### North America

Tel +1.800.545.6258  
Fax +1.800.527.5703  
thermal.info@nVent.com

### Europe, Middle East, Africa

Tel +32.16.213.511  
Fax +32.16.213.604  
thermal.info@nVent.com

### Asia Pacific

Tel +86.21.2412.1688  
Fax +86.21.5426.3167  
cn.thermal.info@nVent.com

### Latin America

Tel +1.713.868.4800  
Fax +1.713.868.2333  
thermal.info@nVent.com



nVent.com/RAYCHEM