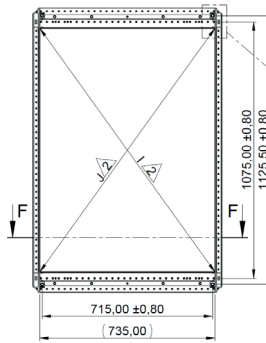
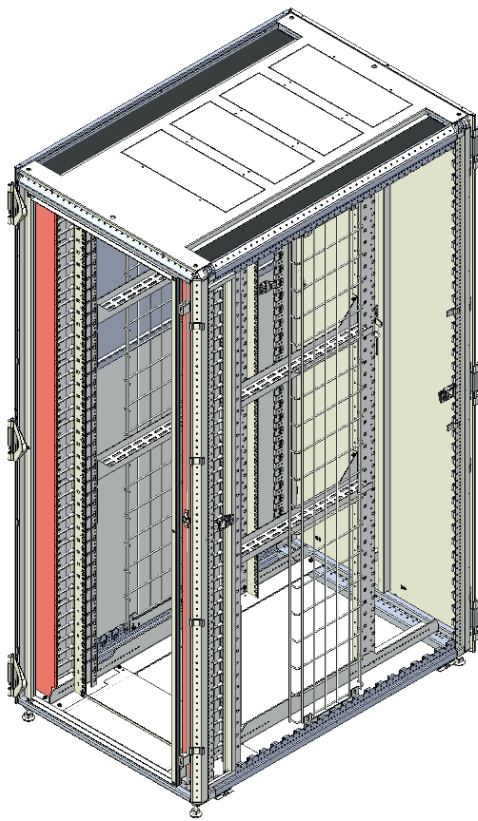
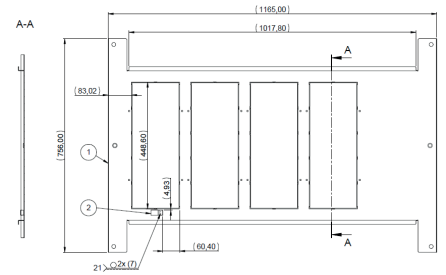


Varistar CP Cabling Rack High Cable Density

10630-028



Position adjustable feet



Cable entry top cover

TECHNICAL DATA

- Depth: 1,200 mm
- Height: 2,000 mm/42U
- Width: 800 mm
- Version: Cabling rack

Delivery comprises:

Item	Quantity	Description
1	1	Welded basic frame (CP) sheet metal profile with all-round meandering in 25 mm grid increments for M6 taptite screws and/or M5 cage nuts has a static load-carrying capacity of max. 1,600 kg and 1,000 kg dynamic, RAL 7021
2	1	Top cover, RAL 7021 in steel plate 1.5 mm with cut-outs for cable entry
3	1	Brush strip set fitted in cut-out zone rear rear and left/right side
4	1	Front door, perforated, steel, with 180° hinges, 3-point locking and lever handle, 1333 locking cylinder, color RAL 7021
5	1	Rear double door, steel, with 180° hinges and perforation, 3-point locking and lever handle 1333 locking cylinder, color RAL 7021
6	2	Side panels with quick-release fastener, divided, 1 mm steel
7	4	19" panel/slide mounts, steel, mounted in 740 mm intervals, with U marking, color RAL 7021, panel/slide mounts can be recessed in 25 mm steps
8	4	Cross member, 2.5 mm steel (to accept 19" panel/slide mounts in 800 mm wide cabinets)
9	2	Air blanking panels with cut outs and brushes (2U – 19"), 1.5 mm steel, gasket material
10	2	Cable ladder 300 mm widths round steel, zinc-plated, height 1,800 mm, for cable ties or velcro, mounted left/right
11	4	Horizontal cable tray besides the 19" plane, 1 mm steel, color RAL 7021, width 69 mm, length 587 mm (c-distance 740 mm)
12	2	Cable manager front over full cabinet height, with 2 rows of cable fingers and front cover, 2 mm steel, RAL 7021
13	4	Adjustable foot
14	1	Panel bottom to seal the gap front side under the cabinet for containment integration
15	1	Earthing kit, assembled