

Standard and Standard Transition Couplers (A2)



Standard couplers and standard transition couplers (A2), part of the nVent LENTON line of concrete products are typically specified to provide continuity and structural integrity in reinforced concrete structures. The couplers are machined to have taper threads at both ends, creating a mechanical butt splice of two sections of reinforcing steel. nVent LENTON standard couplers are designed for use when at least one bar is free to rotate. nVent LENTON transition couplers are intended to splice bars of different diameters and are available for single and multi-step transitions.

nVent LENTON standard couplers meet or exceed major international building code requirements. They are one of the slimmest couplers available and the tapered thread makes them one of the most reliable, easy-to-install and cost-effective systems on the market.

TYPICAL APPLICATIONS

- Column bar splicing: creates a continuous length of bar (shearwalls, corewalls)
- Beam bar splicing: creates a continuous length of bar
- Future extension: embedded within the concrete to structurally join the bar at a future date
- Segmental pours: positioned within the form of the first pour to allow fastening prior to the second pour

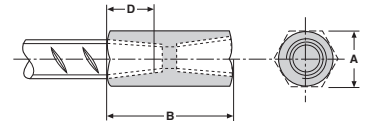
For more information, contact nVent for your nearest supplier or visit nVent.com/LENTON.

FEATURES

- Designed to meet or exceed major international building code requirements, AASHTO, ABNT NBR 8548:1984, ACI 318 Type 1 (125% Specified Yield), ACI 318 Type 2 (Specified Ultimate), ACI 349, ACI 359, AS3600, CAN/CSA - N287.2/.3/.4, IBC Type 1 (125% Specified Yield), IBC Type 2 (Specified Ultimate), ISO 15835, US Army Corps of Engineers
- Can be used with a wide variety of international rebar grades and deformation patterns
- Taper thread design eliminates cross-threading
- Installs quickly and easily
- Slim design reduces concrete cover
- Available in sizes 10 mm - 57 mm (ASTM #3 - #18)

STANDARD COUPLERS (A2)

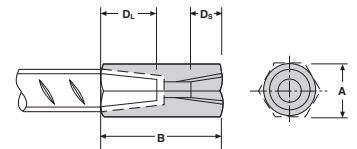
A = coupler diameter
B = length of coupler bar
D = bar engagement



Part Number	US Domestic Part Number	Rebar Size			A		B		D		Weight	
		(ASTM)	(Metric)	(Canadian)	(mm)	(in)	(mm)	(in)	(mm)	(in)	(kg)	(lbs)
EL12A2N	EL12A2	#4	12	10M	17*	0.69*	42	1.63	14	0.58	0.06	0.1
EL16A2N	EL16A2	#5	16	15M	22*	0.88*	56	2.19	22	0.86	0.12	0.3
EL20A2N	EL20A2	#6	20	20M	27*	1.06*	72	2.81	29	1.09	0.24	0.5
EL22A2N	EL22A2	#7	22	-	32	1.19*	81	3.16	32	1.26	0.35	0.7
EL25A2N	EL25A2	#8	25	25M	36	1.38	86	3.34	35	1.36	0.45	0.9
EL28A2N	EL28A2	#9	28	30M	40	1.50	92	3.59	38	1.49	0.58	1.1
EL32A2N	EL32A2	#10	32	-	45	1.75	97	3.78	40	1.58	0.76	1.6
EL36A2N	EL36A2	#11	36	35M	50	1.88	102	3.97	43	1.68	0.99	1.8
EL38A2N	EL38A2	-	38	-	53	2.00	106	4.13	44	1.75	1.14	2.2
EL40A2N	EL40A2	-	40	-	55	2.25	127	5.00	56	2.17	1.38	2.4
EL43TA2N	EL43TA2	#14	43	45M	60	2.25	137	5.25	54	2.2	1.92	3.5
EL50TA2N	EL50TA2	-	50	-	70	2.75	167	6.41	72	2.78	3.00	6.3
EL57TA2N	EL57TA2	#18	57	55M	80	3.00	168	6.47	70	2.81	4.14	6.6

STANDARD TRANSITION COUPLERS (A2)

A = coupler diameter
B = length of coupler bar
D_L = large bar engagement
D_S = small bar engagement



Part Number	US Domestic Part Number	Rebar Size			A		B		DL = Large Bar		DS = Small Bar		Weight	
		(ASTM)	(Metric)	(Canadian)	(mm)	(in)	(mm)	(in)	(mm)	(in)	(mm)	(in)	(kg)	(lbs)
EL1612A2N	EL1612A2	#5/#4	16/12	15M/10M	22*	0.88*	59	2.31	22	0.86	15	0.58	0.14	0.3
EL2016A2N	EL2016A2	#6/#5	20/16	20M/15M	27*	1.06*	76	3.00	28	1.09	22	0.86	0.27	0.9
EL2220A2N	EL2220A2	#7/#6	22/20	-	32	1.19*	87	3.41	32	1.26	28	1.09	0.44	0.8
EL2520A2N	EL2520A2	#8/#6	25/20	25M/20M	36	1.38	89	3.50	34	1.36	28	1.09	0.51	0.9
EL2522A2N	EL2522A2	#8/#7	25/22	-	36	1.38	93	3.69	34	1.36	32	1.26	0.52	0.9
EL2825A2N	EL2825A2	#9/#8	28/25	30M/25M	40	1.50	97	3.91	38	1.49	34	1.36	0.66	1.2
EL3228A2N	EL3228A2	#10/#9	32/28	-	45	1.75	105	4.13	40	1.58	38	1.49	0.87	1.8
EL3632A2N	EL3632A2	#11/#10	36/32	-	48	1.88	110	4.31	43	1.68	40	1.58	0.98	2.0
EL4032A2N	-	-	40/32	-	55	2.17	122	4.82	55	2.17	40	1.58	1.52	3.3
EL43T36A2N	EL43T36A2	#14/#11	43/36	45M/35M	60	2.25	131	5.09	56	2.20	43	1.68	1.98	3.6
EL50T40A2N	-	-	50/40	-	70	2.76	159	6.24	71	2.78	55	2.17	3.89	8.6
EL57T36A2N	EL57T36A2	#18/#11	57/36	55M/35M	78	3.00	147	5.69	71	2.81	40	1.58	3.84	7.6
EL57T43TA2N	EL57T43TA2	#18/#14	57/43	55M/45M	78	3.00	164	6.31	71	2.81	56	2.20	4.24	8.2

* Hex material (measured across the flats), others use round material.

Additional multi-step transitions available upon request.

Dimensions are typical.

Metric dimensions (mm, kg) represent product produced from metric material diameters.

Imperial dimensions (in, lbs) represent product produced from imperial material diameters.

Refer to complete installation instructions provided with the product or available at nVent.com/LENTON prior to commencing installation.

ACI is a registered trademark of American Concrete Institute.



Our powerful portfolio of brands:

CADDY ERICO HOFFMAN RAYCHEM SCHROFF TRACER