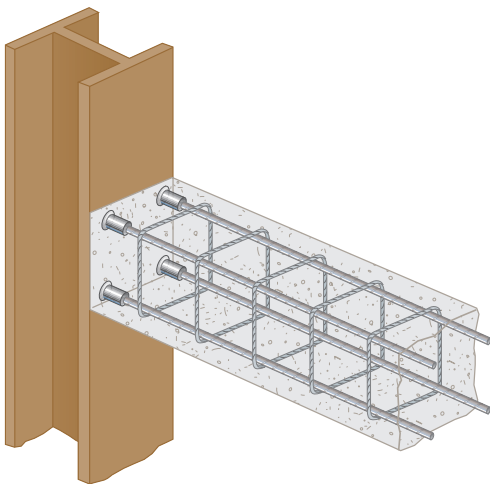


NVENT LENTON C13 WELDABLE HALF COUPLER



FEATURES:

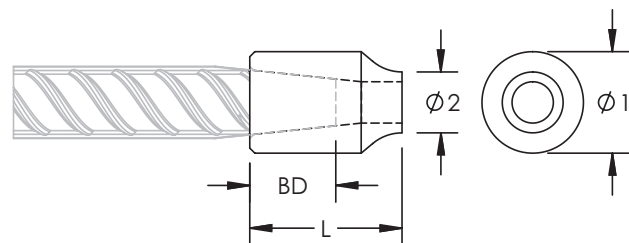
- Designed for connecting reinforcing bar perpendicular to structural steel sections or plates
- Internally taper threaded on one end, with the other end prepared for welding
- Machined from weldable grades of steel
- Slim design maintains concrete cover

nVent LENTON One-Piece Weldable Couplers (C13/C13N) provide a quick and easy solution for connecting reinforcing steel bar (rebar) to structural steel sections or plates. The coupler has internally taper thread on one end. The other end has an exterior surface prepared for welding. The C13 One-piece Weldable coupler materials have been utilized to minimize the coupler size. The weld engineer should refer to the appropriate local welding procedures to assist in the design. One-Piece Weldable Couplers are designed to meet ISO 15835 with slip option 1 & 2 for grade 500 or lower and ACI 318 Type 1 and Type 2 for ASTM A615 & A706 for grade 60, 75 and 80 reinforcing steels

Typical Application

New Composite Design Structures:
Connecting reinforced bar perpendicular to steel sections or plate

Material: Steel
Finish: Plain



Part Number	Rebar Size			Diameter		Length L	Bar Depth BD	Unit Weight
	Metric	US	Canada	Ø1	Ø2			
EL12C13N	12 mm	#4	10M	20 mm	11 mm	40 mm	19 mm	0.06 kg
EL14C13N	14 mm	-	-	25 mm	18 mm	42 mm	21 mm	0.12 kg
EL16C13N	16 mm	#5	15M	25 mm	18 mm	45 mm	24 mm	0.11 kg
EL18C13N	18 mm	-	-	30 mm	24 mm	50 mm	29 mm	0.20 kg
EL20C13N	20 mm	#6	20M	30 mm	22 mm	59 mm	35 mm	0.22 kg
EL22C13N	22 mm	#7	-	35 mm	16 mm	65 mm	37 mm	0.32 kg
EL25C13N	25 mm	#8	25M	40 mm	24 mm	68 mm	40 mm	0.45 kg
EL28C13N	28 mm	#9	30M	40 mm	16 mm	74 mm	42 mm	0.41 kg
EL32C13N	32 mm	#10	-	50 mm	32 mm	75 mm	45 mm	0.75 kg
EL36C13N	36 mm	#11	35M	50 mm	22 mm	87 mm	52 mm	0.74 kg
EL38C13N	38 mm	-	-	60 mm	38 mm	85 mm	53 mm	1.24 kg
EL40C13N	40 mm	-	-	60 mm	32 mm	91 mm	57 mm	1.25 kg
EL43TC13N	43 mm	#14	45M	60 mm	25 mm	110 mm	66 mm	1.37 kg
EL50TC13N	50 mm	-	-	70 mm	29 mm	117 mm	70 mm	1.94 kg
EL57TC13N	57 mm	#18	55M	80 mm	32 mm	133 mm	83 mm	2.92 kg

Bar dimensions and weights listed may vary by region. Coupler sizes not shown may be available by special order. Contact your nVent LENTON representative for more information.

The design of the weld, the selection of electrode, and other relevant choices depend on the chemical and physical properties of the structural steel to which the couplers are welded. Engineers who design assemblies should adhere to all appropriate regulations.

Designed to Meet

AASHTO, ABNT NBR 8548:1984, ACI 318 Type 1 (125% Specified Yield), ACI 318 Type 2 (Specified Ultimate), ACI 349, ACI 359, AS3600, BS EN 1992-1-1, BS EN 1992-2, CAN/CSA - N287.2/.3/.4, DIN EN 1992-1-1, Eurocode 2, IBC Type 1 (125% Specified Yield), IBC Type 2 (Specified Ultimate), ISO 15835, NEN EN 1992-1-1, NF A 35-020-1, NF EN 1992-1-1, ÖNORM EN 1992-1-1, Sellafield Ltd. Std. ES_0_3110, US Army Corps of Engineers



Our powerful portfolio of brands:

CADDY ERICO HOFFMAN RAYCHEM SCHROFF TRACER

WARNING: nVent products shall be installed and used only as indicated in nVent's product instruction sheets and training materials. Instruction sheets are available at nVent.com/ERICO and from your nVent customer service representative. Improper installation, misuse, misapplication or other failure to completely follow nVent's instructions and warnings may cause product malfunction, property damage, serious bodily injury and/or death, and void your warranty.

©2018 nVent. All nVent marks and logos are owned or licensed by nVent Services GmbH or its affiliates. All other trademarks are the property of their respective owners. nVent reserves the right to change specifications without notice.

Lenton-DS-C1335S-C355LT17EUEEN-EN-1805