

nVent LENTON Weldable Half Coupler “C2” and “C3J” Mechanical Rebar Splice



CONNECT AND PROTECT

DESCRIPTION

nVent LENTON Half Coupler C2 and C3J are specified for applications where reinforcing bar is being joined to structural steel. The coupler contains nVent LENTON tapered threads at one end while the opposing side is machined in preparation for welding. The engineer should refer to the AWS® Code for appropriate welding procedures. The reinforcing steel is purchased pre-threaded at a local rebar fabrication shop. Contact nVent ERICO for your nearest supplier.

FEATURES

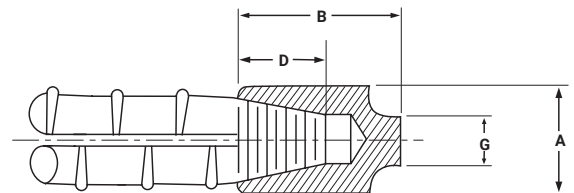
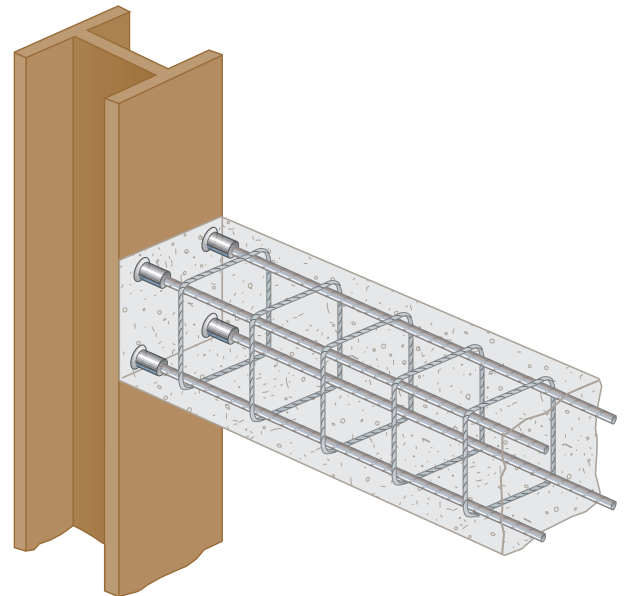
- Connects reinforcing bar to structural steel sections or plates
- Unique self-aligning taper thread provides continuity and structural integrity
- Spliced rebar maintains full strength in tension, compression and stress-reversal applications
- Quick and easy to install
- Develops higher tensile strength than lap splicing
- Designed to withstand man-made blasts and other seismic events
- Provides full load transfer with a very slim, short coupler
- Exceeds ACI®, UBC® and IBC® full-tension splice requirements
- Exceeds Type 1 and Type 2 splice requirements

TYPICAL APPLICATIONS

New Composite Design Structures:

- Reinforced concrete and structural steel construction.

NOTE: nVent LENTON Half Couplers are manufactured from A.I.S.I. 1018, 1030, or 1035 material.

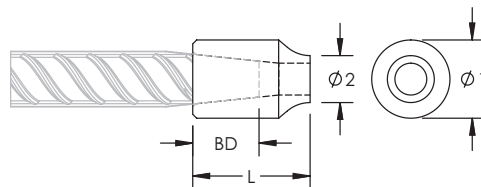


Material: Steel
 Finish: Plain
 100% U.S. Domestic Content: Yes

Part Number	Rebar Size, Metric	Rebar Size, US	Rebar Size, Canada	Diameter 1 Ø1	Diameter 2 Ø2	Length L	Bar Depth BD	Unit Weight
Coupler Body Length: Standard								
EL12C2	12 mm	#4	10M	0.79"	0.44"	1.19"	0.58"	0.1 lb
EL16C2	16 mm	#5	15M	0.98"	0.56"	1.38"	0.86"	0.2 lb
EL20C3J	20 mm	#6	20M	1.25"	0.88"	2.16"	1.09"	0.5 lb
EL22C3J	22 mm	#7	–	1.25"	0.75"	2.41"	1.26"	0.5 lb
EL25C3J	25 mm	#8	25M	1.56"	1.00"	2.53"	1.36"	0.9 lb
EL28C3J	28 mm	#9	30M	1.56"	0.94"	2.69"	1.49"	0.9 lb
EL32C3J	32 mm	#10	–	2.00"	0.94"	2.88"	1.58"	1.6 lb
EL36C3J	36 mm	#11	35M	2.00"	1.13"	2.97"	1.68"	1.6 lb
EL38C3J	38 mm	#12	–	2.28"	1.41"	3.13"	1.75"	2.6 lb
EL43TC3J	43 mm	#14	45M	2.38"	1.41"	3.75"	2.20"	2.9 lb
EL57TC3J	57 mm	#18	55M	3.13"	1.75"	4.50"	2.81"	5.5 lb
Coupler Body Length: Customer Specified								
EL25C3J1200	25 mm	#8	25M	1.56"	1.00"	12.00"	1.36"	6.1 lb
EL28C3J1200	28 mm	#9	30M	1.56"	0.94"	12.00"	1.49"	5.9 lb
EL32C3J1200	32 mm	#10	–	2.00"	0.94"	12.00"	1.58"	9.7 lb
EL36C3J1200	36 mm	#11	35M	2.00"	1.13"	12.00"	1.68"	9.6 lb
EL43TC3J1200	43 mm	#14	45M	2.38"	1.41"	12.00"	2.20"	13.2 lb
EL57TC3J1200	57 mm	#18	55M	3.13"	1.75"	12.00"	2.81"	22.0 lb

Bar dimensions and weights listed may vary by region. Coupler sizes not shown may be available by special order. Contact your nVent LENTON representative for more information.

The design of the weld, the selection of electrode, and other relevant choices depend on the chemical and physical properties of the structural steel to which the couplers are welded. Engineers who design assemblies should adhere to all appropriate regulations.



DESIGNED TO MEET

AASHTO, ABNT NBR 8548:1984, ACI 318 Type 1 (125% Specified Yield), ACI 318 Type 2 (Specified Tensile), ACI 349, ACI 359, AS3600, CAN/CSA - N287.2/.3/.4, IBC Type 1 (125% Specified Yield), IBC Type 2 (Specified Tensile), US Army Corps of Engineers.

For a copy of the nVent LENTON Weldable Half Coupler Technical Data Sheet covering welding details, please contact nVent ERICO or visit our web page.



Our powerful portfolio of brands:

CADDY ERICO HOFFMAN RAYCHEM SCHROFF TRACER