



**CONNECT AND PROTECT**

# Grounding and Bonding Braids

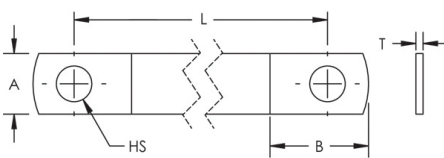
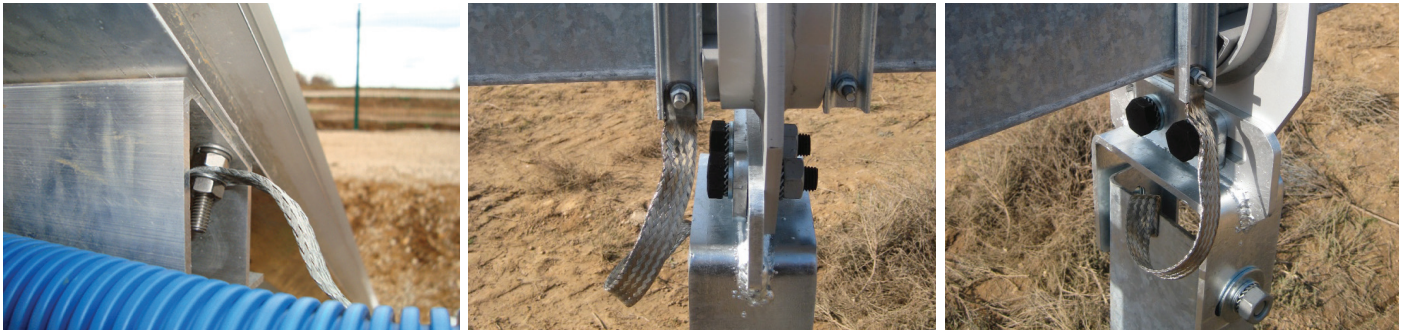
Featured products

  
nvent

**ERICO**



# MBJ Grounding and Bonding Braid, Tinned Copper



**Material: Copper**  
**Finish: Tinned**  
**Working Temperature: 221 °F Max**  
**Complies With: IEC® 60439.1,**  
**IEC® 61439.1**

MBJ Grounding and Bonding Braids are a reliable and convenient grounding solution for applications that require flexibility and durability. The tinned copper ground braids with massivated palms come ready to install without any additional cutting, stripping, crimping or punching and do not require the addition of tin or crimped lugs. The proprietary manufacturing process optimizes the electrical contact between each wire and helps eliminate moisture issues in the palms, preventing corrosion and lengthening the useful life of the braid.

- Complete range of earth/ground flexible connections from 6 - 100 mm<sup>2</sup> (11.84 - 197.35 kcmil) cross section and from 100 - 500 mm (3.937" - 19.685") length
- Integral palm, without tin or crimped lugs for superior electrical contact and tensile strength resistance
- Resistant to vibration and fatigue, reducing maintenance
- Provides weight savings, material savings and lower impedance when compared to similar lugged cables with insulation
- Ready to use out of the box, eliminates the need for cutting, stripping, crimping and punching
- Quick and easy to install
- Recommended by the EMC/EMI directives and less impedance than cables
- EAC compliant
- RoHS compliant



Part Number	Article Number	Intensity	Thickness T	Cross Section	Length L	Hole Size HS	A	B	Unit Weight
MBJ6-150-6	556600	40 A	0.043"	11.84 kcmil	5.906"	0.256"	0.433"	0.709"	0.022 lb
MBJ6-200-6	563410	40 A	0.043"	11.84 kcmil	7.874"	0.256"	0.433"	0.709"	0.037 lb
MBJ10-200-6	556930	75 A	0.043"	19.74 kcmil	7.874"	0.256"	0.433"	0.709"	0.048 lb
MBJ10-300-6	556610	75 A	0.043"	19.74 kcmil	11.811"	0.256"	0.433"	0.709"	0.073 lb
MBJ16-100-6	563540	120 A	0.059"	31.57 kcmil	3.937"	0.256"	0.591"	0.787"	0.040 lb
MBJ16-100-8	556620	120 A	0.059"	31.57 kcmil	3.937"	0.335"	0.591"	0.787"	0.040 lb
MBJ16-150-6	563550	120 A	0.059"	31.57 kcmil	5.906"	0.256"	0.591"	0.787"	0.077 lb
MBJ16-150-8	556630	120 A	0.059"	31.57 kcmil	5.906"	0.335"	0.591"	0.787"	0.077 lb
MBJ16-200-6	563300	120 A	0.059"	31.57 kcmil	7.874"	0.256"	0.591"	0.787"	0.073 lb
MBJ16-200-8	556640	120 A	0.059"	31.57 kcmil	7.874"	0.335"	0.591"	0.787"	0.073 lb
MBJ16-250-8	556650	120 A	0.059"	31.57 kcmil	9.843"	0.335"	0.591"	0.787"	0.088 lb
MBJ16-300-6	563320	120 A	0.059"	31.57 kcmil	11.811"	0.256"	0.591"	0.787"	0.110 lb
MBJ16-300-8	556660	120 A	0.059"	31.57 kcmil	11.811"	0.335"	0.591"	0.787"	0.110 lb

Part Number	Article Number	Intensity	Thickness T	Cross Section	Length L	Hole Size HS	A	B	Unit Weight
MBJ16-500-8	556940	120 A	0.059"	31.57 kcmil	19.685"	0.335"	0.591"	0.787"	0.180 lb
MBJ25-100-10	556670	150 A	0.059"	49.34 kcmil	3.937"	0.413"	0.866"	1.102"	0.059 lb
MBJ25-150-10	556680	150 A	0.059"	49.34 kcmil	5.906"	0.413"	0.866"	1.102"	0.086 lb
MBJ25-200-6	563340	150 A	0.059"	49.34 kcmil	7.874"	0.256"	0.866"	1.102"	0.114 lb
MBJ25-200-10	556690	150 A	0.059"	49.34 kcmil	7.874"	0.413"	0.866"	1.102"	0.114 lb
MBJ25-200-12	563430	150 A	0.059"	49.34 kcmil	7.874"	0.492"	0.866"	1.102"	0.114 lb
MBJ25-250-10	556700	150 A	0.059"	49.34 kcmil	9.843"	0.413"	0.866"	1.102"	0.141 lb
MBJ25-300-10	556710	150 A	0.059"	49.34 kcmil	11.811"	0.413"	0.866"	1.102"	0.169 lb
MBJ25-500-10	556950	150 A	0.059"	49.34 kcmil	19.685"	0.413"	0.866"	1.102"	0.286 lb
MBJ30-100-10	556720	180 A	0.079"	59.20 kcmil	3.937"	0.413"	0.866"	1.102"	0.070 lb
MBJ30-150-10	556730	180 A	0.079"	59.20 kcmil	5.906"	0.413"	0.866"	1.102"	0.103 lb
MBJ30-200-10	556740	180 A	0.079"	59.20 kcmil	7.874"	0.413"	0.866"	1.102"	0.136 lb
MBJ30-250-10	556750	180 A	0.079"	59.20 kcmil	9.843"	0.413"	0.866"	1.102"	0.165 lb
MBJ30-300-10	556760	180 A	0.079"	59.20 kcmil	11.811"	0.413"	0.866"	1.102"	0.202 lb
MBJ30-500-10	556960	180 A	0.079"	59.20 kcmil	19.685"	0.413"	0.866"	1.102"	0.341 lb
MBJ35-250-25	565000	197 A	0.059"	69.07 kcmil	9.843"	1.004"	1.575"	1.772"	0.196 lb
MBJ35-100-10	556770	197 A	0.083"	69.07 kcmil	3.937"	0.413"	0.866"	1.102"	0.081 lb
MBJ35-150-10	556780	197 A	0.083"	69.07 kcmil	5.906"	0.413"	0.866"	1.102"	0.119 lb
MBJ35-200-10	556790	197 A	0.083"	69.07 kcmil	7.874"	0.413"	0.866"	1.102"	0.158 lb
MBJ35-250-10	556800	197 A	0.083"	69.07 kcmil	9.843"	0.413"	0.866"	1.102"	0.196 lb
MBJ35-300-10	556810	197 A	0.083"	69.07 kcmil	11.811"	0.413"	0.866"	1.102"	0.242 lb
MBJ35-500-10	556970	197 A	0.083"	69.07 kcmil	19.685"	0.413"	0.866"	1.102"	0.396 lb
MBJ50-100-10	556820	250 A	0.098"	98.68 kcmil	3.937"	0.413"	1.102"	1.300"	0.114 lb
MBJ50-150-10	556830	250 A	0.098"	98.68 kcmil	5.906"	0.413"	1.102"	1.300"	0.169 lb
MBJ50-200-6	563350	250 A	0.098"	98.68 kcmil	7.874"	0.256"	1.102"	1.300"	0.264 lb
MBJ50-200-10	556840	250 A	0.098"	98.68 kcmil	7.874"	0.413"	1.102"	1.300"	0.264 lb
MBJ50-200-12	563440	250 A	0.098"	98.68 kcmil	7.874"	0.492"	1.102"	1.300"	0.264 lb
MBJ50-200-16	563360	250 A	0.098"	98.68 kcmil	7.874"	0.650"	1.102"	1.300"	0.242 lb
MBJ50-200-18	563370	250 A	0.098"	98.68 kcmil	7.874"	0.728"	1.102"	1.300"	0.242 lb
MBJ50-250-10	556850	250 A	0.098"	98.68 kcmil	9.843"	0.413"	1.102"	1.300"	0.279 lb
MBJ50-300-6	563380	250 A	0.098"	98.68 kcmil	11.811"	0.256"	1.102"	1.300"	0.330 lb
MBJ50-300-10	556860	250 A	0.098"	98.68 kcmil	11.811"	0.413"	1.102"	1.300"	0.337 lb
MBJ50-300-16	563390	250 A	0.098"	98.68 kcmil	11.811"	0.650"	1.102"	1.300"	0.330 lb
MBJ50-300-18	563400	250 A	0.098"	98.68 kcmil	11.811"	0.728"	1.102"	1.300"	0.308 lb
MBJ50-500-10	556980	250 A	0.098"	98.68 kcmil	19.685"	0.413"	1.102"	1.300"	0.561 lb
MBJ50-500-12	563560	250 A	0.098"	98.68 kcmil	19.685"	0.492"	1.102"	1.300"	0.561 lb
MBJ70-300-22	563480	290 A	0.110"	138.15 kcmil	11.811"	0.886"	1.575"	1.772"	0.440 lb
MBJ70-300-6	563450	290 A	0.133"	138.15 kcmil	11.811"	0.256"	1.102"	1.300"	0.462 lb
MBJ70-300-10	563460	290 A	0.133"	138.15 kcmil	11.811"	0.413"	1.102"	1.300"	0.462 lb
MBJ70-300-12	563420	290 A	0.133"	138.15 kcmil	11.811"	0.492"	1.102"	1.300"	0.462 lb
MBJ70-300-16	563470	290 A	0.133"	138.15 kcmil	11.811"	0.650"	1.102"	1.300"	0.440 lb
MBJ70-500-10	563490	290 A	0.133"	138.15 kcmil	19.685"	0.413"	1.102"	1.300"	0.748 lb
MBJ100-250-16	563500	349 A	0.157"	197.35 kcmil	9.843"	0.650"	1.969"	2.165"	0.559 lb
MBJ100-250-30	563510	349 A	0.157"	197.35 kcmil	9.843"	1.201"	1.969"	2.165"	0.559 lb
MBJ100-500-16	563520	349 A	0.157"	197.35 kcmil	19.685"	0.650"	1.969"	2.165"	1.118 lb
MBJ100-500-30	563530	349 A	0.157"	197.35 kcmil	19.685"	1.201"	1.969"	2.165"	1.118 lb



# Tinned Copper Braid

## SOLAR APPLICATION CASE STUDY



An opportunity for grounding in a solar application arose after nVent ERICO agent in Arizona secured a meeting with engineers from a leading manufacturer of solar tracker applications to present a value-based proposition using nVent ERICO Cadweld solutions. The meeting began with a focus on standard Cadweld applications. However, after establishing a relationship with the engineers, it was determined that a customized solution was needed above and beyond our established Cadweld applications. nVent ERICO won this job through our expertise in grounding and by being responsive to the end-use customer with a creative solution.

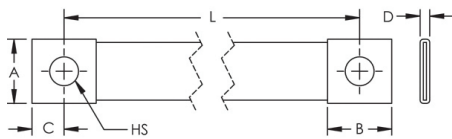
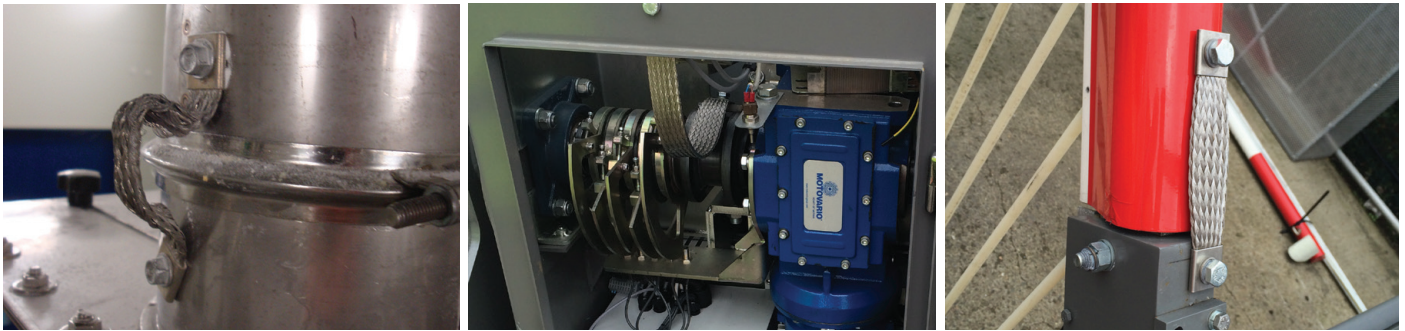
Brian Liederbach, Product Manager, Lightning and Surge Protection, was instrumental in developing the kits properly and in a timely manner. A critical requirement for this opportunity was to provide a series of assemblies with a UL® listing. Ward Judson, Bryson Allen, and Greg Martinjak obtained this listing through the in-house lab. Without the recent investment in nVent ERICO's electrical lab support and capabilities, the ability to quickly evaluate different solutions and respond to the customer would not have been possible.

This big win is significant for nVent ERICO in that it positions the company to work with large utility-scale solar PV tracker arrays and related applications. This extraordinary opportunity for nVent ERICO helps expand its footprint in North America from mainly below-grade grounding to being a leader in custom, above-grade bonding solutions.



**Braid Assembly Testing in nVent's Solon, OH Electrical Lab**

# CPI Grounding and Bonding Braid, Stainless Steel



**Material: Stainless Steel 316L  
(EN 1.4404)**

**Certification Details: UL® 467  
Complies With: IEC® 60439.1,  
IEC® 61439.1**

High-quality CPI stainless steel grounding and bonding braids can be installed in extremely corrosive environments, like offshore applications or coastal applications. The full range of CPI braids are ideal for applications using stainless steel pipe or tanks, like the food and beverage industry, building industry, transportation, oil and chemical industry.

nVent ERICO offers 316L stainless steel braids and lugs, one of the highest resistant stainless steel options on the market. Our proprietary manufacturing process has been optimized to provide the best braiding, crimping, cutting and punching.

- Superior abrasion, corrosion, chemical and UV resistance make CPI braids ideal for outdoor applications
- Great for expansion joints where constant movement requires a flexible and durable solution
- Ready to use out of the box, eliminates the need for cutting, stripping, crimping and punching
- Quick and easy to install
- Resistant to vibration and fatigue, reducing maintenance
- Will not rust or discolor, so the appearance will never fade or change
- Excellent electrical contact
- No additional lugs or terminals needed
- Non-magnetic material
- Recommended by the EMC/EMI directives
- Performs to the class C5 (very high) category as per ISO® 12944-2
- EAC compliant
- RoHS compliant



Part Number	Article Number	Cross Section	Length L	Hole Size HS	A	B	C	D	Unit Weight
CPI16-150-8	554277	31.57 kcmil	5.906"	0.335"	0.689"	0.787"	0.394"	0.118"	0.068 lb
CPI16-200-8	554278	31.57 kcmil	7.874"	0.335"	0.689"	0.787"	0.394"	0.118"	0.082 lb
CPI16-250-8	554279	31.57 kcmil	9.843"	0.335"	0.689"	0.787"	0.394"	0.118"	0.095 lb
CPI16-300-8	554280	31.57 kcmil	11.811"	0.335"	0.689"	0.787"	0.394"	0.118"	0.110 lb
CPI16-400-8	554282	31.57 kcmil	15.748"	0.335"	0.689"	0.787"	0.394"	0.118"	0.137 lb
CPI16-600-8	554286	31.57 kcmil	23.622"	0.335"	0.689"	0.787"	0.394"	0.118"	0.192 lb
CPI25-150-10	554299	49.34 kcmil	5.906"	0.413"	1.043"	1.181"	0.591"	0.138"	0.128 lb
CPI25-200-10	554300	49.34 kcmil	7.874"	0.413"	1.043"	1.181"	0.591"	0.138"	0.150 lb
CPI25-250-10	554301	49.34 kcmil	9.843"	0.413"	1.043"	1.181"	0.591"	0.138"	0.172 lb
CPI25-300-10	554302	49.34 kcmil	11.811"	0.413"	1.043"	1.181"	0.591"	0.138"	0.194 lb
CPI25-400-10	554304	49.34 kcmil	15.748"	0.413"	1.043"	1.181"	0.591"	0.138"	0.238 lb
CPI25-600-10	554308	49.34 kcmil	23.622"	0.413"	1.043"	1.181"	0.591"	0.138"	0.324 lb
CPI35-150-12	554321	69.07 kcmil	5.906"	0.512"	1.043"	1.181"	0.591"	0.157"	0.157 lb
CPI35-200-12	554322	69.07 kcmil	7.874"	0.512"	1.043"	1.181"	0.591"	0.157"	0.187 lb
CPI35-250-12	554323	69.07 kcmil	9.843"	0.512"	1.043"	1.181"	0.591"	0.157"	0.218 lb
CPI35-300-12	554324	69.07 kcmil	11.811"	0.512"	1.043"	1.181"	0.591"	0.157"	0.247 lb
CPI35-400-12	554326	69.07 kcmil	15.748"	0.512"	1.043"	1.181"	0.591"	0.157"	0.309 lb
CPI35-600-12	554330	69.07 kcmil	23.622"	0.512"	1.043"	1.181"	0.591"	0.157"	0.430 lb
CPI50-150-12	554343	98.68 kcmil	5.906"	0.512"	1.181"	1.181"	0.591"	0.197"	0.245 lb
CPI50-200-12	554344	98.68 kcmil	7.874"	0.512"	1.181"	1.181"	0.591"	0.197"	0.287 lb
CPI50-250-12	554345	98.68 kcmil	9.843"	0.512"	1.181"	1.181"	0.591"	0.197"	0.331 lb
CPI50-300-12	554346	98.68 kcmil	11.811"	0.512"	1.181"	1.181"	0.591"	0.197"	0.375 lb
CPI50-400-12	554348	98.68 kcmil	15.748"	0.512"	1.181"	1.181"	0.591"	0.197"	0.461 lb
CPI50-600-12	554352	98.68 kcmil	23.622"	0.512"	1.181"	1.181"	0.591"	0.197"	0.635 lb
CPI70-1100-12	554384	138.15 kcmil	43.307"	0.512"	1.181"	1.181"	0.591"	0.228"	1.464 lb
CPI70-150-12	554365	138.15 kcmil	5.906"	0.512"	1.181"	1.181"	0.591"	0.228"	0.306 lb
CPI70-200-12	554366	138.15 kcmil	7.874"	0.512"	1.181"	1.181"	0.591"	0.228"	0.368 lb
CPI70-250-12	554367	138.15 kcmil	9.843"	0.512"	1.181"	1.181"	0.591"	0.228"	0.428 lb
CPI70-300-12	554368	138.15 kcmil	11.811"	0.512"	1.181"	1.181"	0.591"	0.228"	0.489 lb
CPI70-400-12	554370	138.15 kcmil	15.748"	0.512"	1.181"	1.181"	0.591"	0.228"	0.611 lb
CPI70-600-12	554374	138.15 kcmil	23.622"	0.512"	1.181"	1.181"	0.591"	0.228"	0.855 lb
CPI70-800-12	554378	138.15 kcmil	31.496"	0.512"	1.181"	1.181"	0.591"	0.228"	1.098 lb



# Stainless Steel Braid – Oil & Gas Application

## OILFIELD GROUNDING ELECTRIC CASE STUDY



### **OPPORTUNITY: “THIEF HATCH” BONDING UTILIZING STAINLESS STEEL BRAID; 100+ STAINLESS STEEL BRAIDS PER WEEK**

On an oil tank storage facility, each tank utilizes a “thief hatch”. Thief hatches are used to relieve pressure within fiberglass and steel tanks, as well as offer a place to take a sample of the contents within the tank.

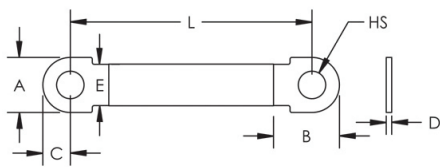
The stainless braids that a customer was utilizing were custom made for oil-field applications. Stainless braid is utilized due to the corrosive nature of these sites. We had a braid that was close to the specifications needed for the application (554370), but the hole dimensions on each end of the braid needed to be adjusted.

The manufacturer of the tank and thief hatch utilizes ¼” fastening hardware on one side and ½” on the opposite side, thus, a new part was designed for the application.

We estimated “safety stock” to ensure we can fulfill demand, even as oil and gas production increases. We also asked the participating distributor that would be selling to the end-user to maintain some level of stock. They agreed to a proposal of purchasing a stocking level of 750 stainless steel braids. This, along with safety stock at our Solon, OH facility, should be enough to meet demand.



# CPIW Grounding and Bonding Braid, Stainless Steel for Large Bolts



**Material: Stainless Steel 316L  
(EN 1.4404)**  
**Certification Details: UL® 467**  
**Complies With: IEC® 60439.1;**  
**IEC® 61439.1**

High-quality CPIW stainless steel grounding and bonding braids can be installed in extremely corrosive environments, like offshore applications or coastal applications. The full range of CPIW braids are ideal for applications using stainless steel pipe or tanks, like the food and beverage industry, building industry, transportation, oil and chemical industry.

nVent ERICO offers 316L stainless steel braids, one of the highest resistant stainless steel options on the market. Our proprietary manufacturing process has been optimized to provide the best braiding, welding, and connection palm.

- Superior abrasion, corrosion, chemical and UV resistance make CPIW braids ideal for outdoor applications
- Covering from M20 (3/4"-10) up to M42 (1 1/2"-6) bolt fixation point
- Great for expansion joints where constant movement requires a flexible and durable solution
- Ready to use out of the box, eliminates the need for cutting, stripping, crimping and punching
- Quick and easy to install
- Resistant to vibration and fatigue, reducing maintenance
- Will not rust or discolor, so the appearance will never fade or change
- Excellent electrical contact
- No additional lugs or terminals needed
- Non-magnetic material
- Recommended by the EMC/EMI directives
- Performs to the class C5 (very high) category as per ISO® 12944-2
- EAC compliant
- RoHS compliant

**Material: Stainless Steel 316L (EN 1.4404)**  
**Certification Details: UL® 467**  
**Complies With: IEC® 60439.1; IEC® 61439.1**



Part Number	Article Number	Cross Section (kcmil)	L (")	HS (")	A (")	B (")	C (")	D (")	E (")	Unit Weight (lb)	Minimum Order Quantity
CPIW50-200-20B	554386B	98.68	7.874	0.819	1.653	2.008	0.827	0.118	1.181	0.282	50
CPIW50-200-24B	554401B	98.68	7.874	0.990	2.047	2.441	1.024	0.118	1.181	0.341	50
CPIW50-250-20B	554398B	98.68	9.843	0.819	1.653	2.008	0.827	0.118	1.181	0.327	50
CPIW50-250-24B	554403B	98.68	9.843	0.990	2.047	2.441	1.024	0.118	1.181	0.388	50
CPIW50-250-27B	554405B	98.68	9.843	1.102	2.283	2.717	1.142	0.118	1.181	0.429	50
CPIW50-250-30B	554407B	98.68	9.843	1.220	2.441	2.913	1.220	0.118	1.181	0.457	50
CPIW50-300-20B	554427B	98.68	11.811	0.819	1.653	2.008	0.827	0.118	1.181	0.441	50
CPIW50-300-24B	554428B	98.68	11.811	0.990	2.047	2.441	1.024	0.118	1.181	0.463	50
CPIW50-300-27B	554429B	98.68	11.811	1.102	2.283	2.717	1.142	0.118	1.181	0.485	50
CPIW50-300-30B	554409B	98.68	11.811	1.220	2.441	2.913	1.220	0.118	1.181	0.504	50
CPIW50-300-33B	554412B	98.68	11.811	1.338	2.677	3.071	1.339	0.118	1.181	0.542	50
CPIW50-300-39B	554416B	98.68	11.811	1.574	3.071	3.504	1.535	0.118	1.181	0.627	50
CPIW50-300-42B	554421B	98.68	11.811	1.692	3.228	3.701	1.614	0.118	1.181	0.664	50
CPIW50-400-33B	554414B	98.68	15.748	1.338	2.677	3.071	1.339	0.118	1.181	0.636	50
CPIW50-400-39B	554418B	98.68	15.748	1.574	3.071	3.504	1.535	0.118	1.181	0.721	50
CPIW50-400-42B	554423B	98.68	15.748	1.692	3.228	3.701	1.614	0.118	1.181	0.758	50
CPIW70-200-20B	554397B	138.15	7.874	0.819	1.653	2.008	0.827	0.118	1.181	0.328	50
CPIW70-200-24B	554402B	138.15	7.874	0.990	2.047	2.441	1.024	0.118	1.181	0.385	50
CPIW70-250-20B	554399B	138.15	9.843	0.819	1.653	2.008	0.827	0.118	1.181	0.392	50
CPIW70-250-24B	554404B	138.15	9.843	0.990	2.047	2.441	1.024	0.118	1.181	0.448	50
CPIW70-250-27B	554406B	138.15	9.843	1.102	2.283	2.717	1.142	0.118	1.181	0.487	50
CPIW70-250-30B	554408B	138.15	9.843	1.220	2.441	2.913	1.220	0.118	1.181	0.513	50
CPIW70-300-30B	554411B	138.15	11.811	1.220	2.441	2.913	1.220	0.118	1.181	0.577	50
CPIW70-300-33B	554413B	138.15	11.811	1.338	2.677	3.071	1.339	0.118	1.181	0.614	50
CPIW70-300-39B	554417B	138.15	11.811	1.574	3.071	3.504	1.535	0.118	1.181	0.695	50
CPIW70-300-42B	554422B	138.15	11.811	1.692	3.228	3.701	1.614	0.118	1.181	0.730	50
CPIW70-400-20B	554388B	138.15	15.748	0.819	1.653	2.008	0.827	0.118	1.181	0.582	50
CPIW70-400-33B	554415B	138.15	15.748	1.338	2.677	3.071	1.339	0.118	1.181	0.740	50
CPIW70-400-39B	554419B	138.15	15.748	1.574	3.071	3.504	1.535	0.118	1.181	0.822	50
CPIW70-400-42B	554424B	138.15	15.748	1.692	3.228	3.701	1.614	0.118	1.181	0.857	50





Our powerful portfolio of brands:

**CADDY ERICO HOFFMAN RAYCHEM SCHROFF TRACER**



[nVent.com/ERICO](https://www.nvent.com/ERICO)

©2018 nVent. All nVent marks and logos are owned or licensed by nVent Services GmbH or its affiliates. All other trademarks are the property of their respective owners. nVent reserves the right to change specifications without notice.

ERICO-SB-E1296B-E157LT17WWEN-EN-1805