

**CONNECT AND PROTECT**

# nVent CADDY All-In-One Electrical Assemblies

Another Road to nVent CADDY Innovation

nvent



**CADDY**

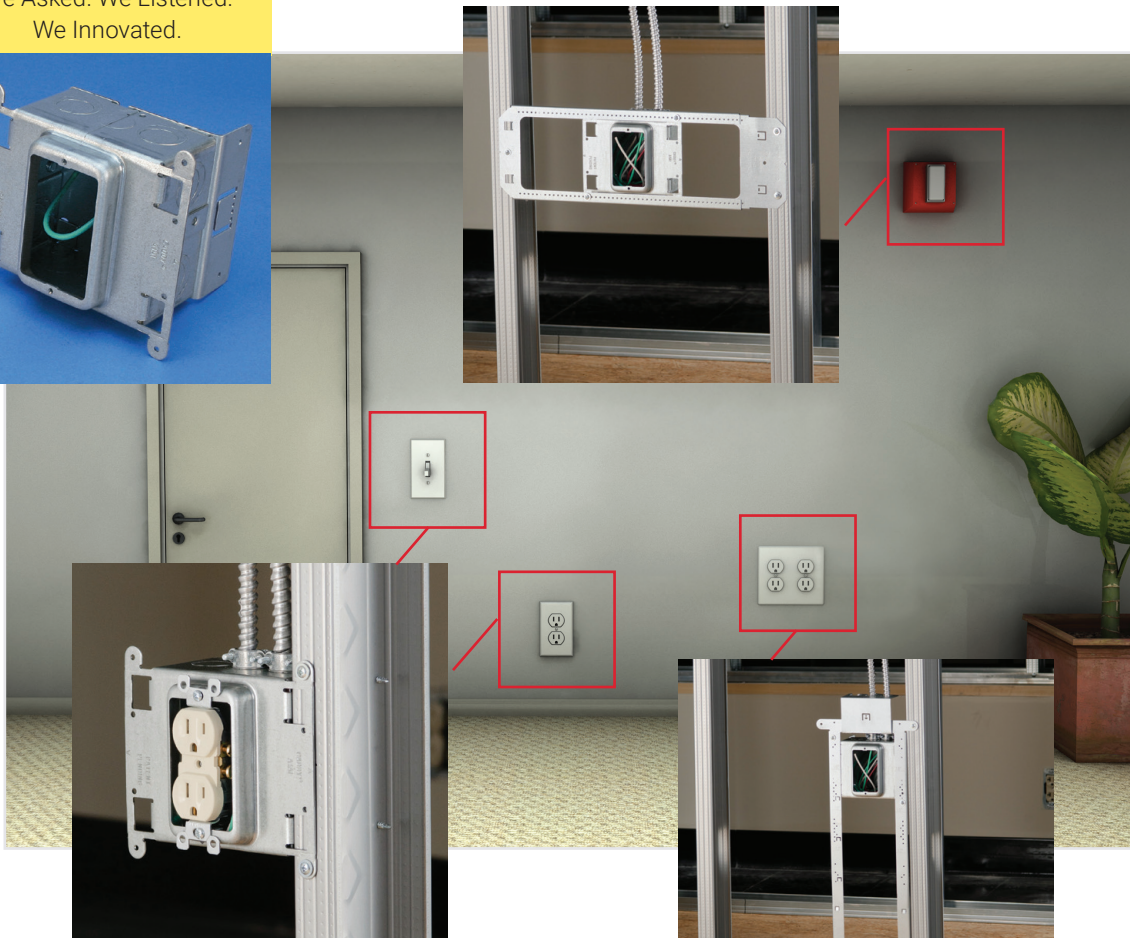
# Electrical Assemblies



We asked electrical contractors what problems they face and how nVent CADDY innovation can help meet their needs. We listened to what they do today and heard a consistent message: Find a better way to mount, wire and install electrical devices, such as switches and outlets, on the job or offsite. Then the nVent CADDY team designed and built ONE system that meets many of the different installation methods and preferences of today's electrical contractor.



Between-Stud Assemblies



Stud-Mounted Assemblies

Floor-Mounted Assemblies

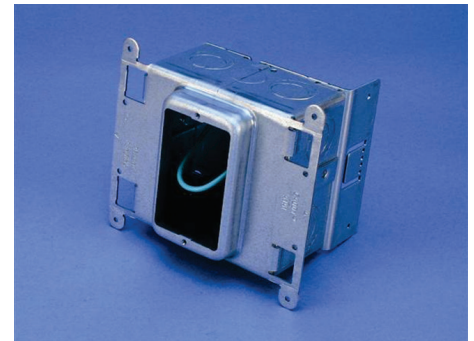
# Electrical Assemblies

Electrical assemblies combine the electrical box, support bracket, mud ring, far-side support and ground wire pigtail into a single solution that is ready to use right out of the box. The system provides the contractor with the flexibility to wire from the front or the back of the assembly. The open-back design allows for easier access when installing conduit connectors or multiple circuits. Models are available with integrated, removable or without mud rings and, unlike many other solutions, the unit stays fixed in place when the mud ring is removed. The system includes stud-mounted, between-stud and floor-mounted solutions.

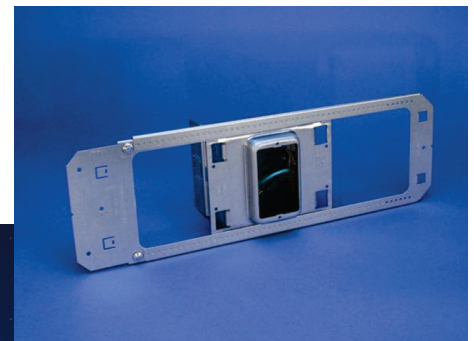
This unique system offers electrical contractors fewer components, better access for wiring, and may be purchased as standard inventory from stocking nVent CADDY distributors.

## FEATURES

- Complete assembly that is ready to use right out of the box and installs with just two screws
- Open-back design offers faster and easier access to install conduit connectors or wiring
- Box remains fixed in place when mud ring is removed (on applicable models)
- Rigid back plate functions as a far-side support and is resistant to bending
- Stocked inventory – available when you need it
- Made in the USA



Stud-Mounted Assemblies



Between-Stud Assemblies



Floor-Mounted Assemblies

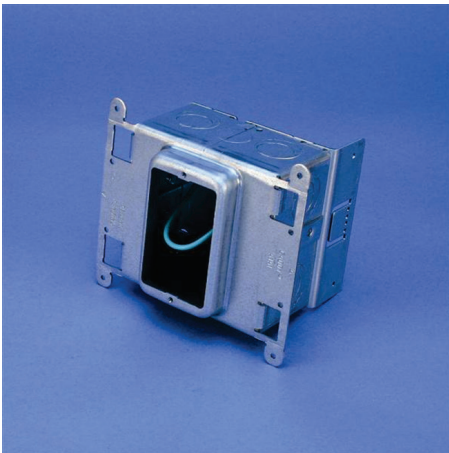


# Stud-Mounted Assemblies

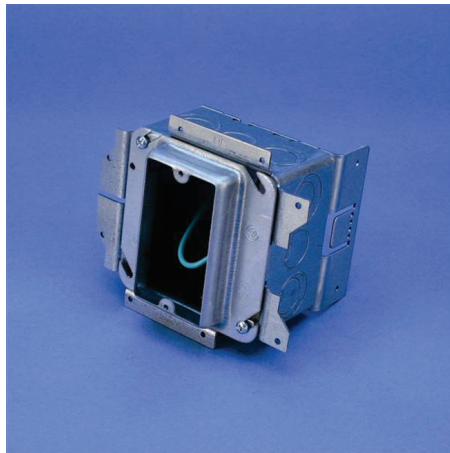
Stud-mounted electrical assemblies are a fast and easy way to mount, wire and install outlet and switch assemblies to metal studs with just two screws. Part of the innovative product family, this solution combines the electrical box, support bracket, mud ring, far-side support and ground wire pigtail into ONE unit. The open-back design provides greater access to the box interior, making the installation of conduit connectors and wiring for multiple circuits faster and easier. Stud-mounted electrical assemblies are available in single- or double-gang and with a number of mud-ring configurations that meet the needs of most stud-mounted applications.

## FEATURES

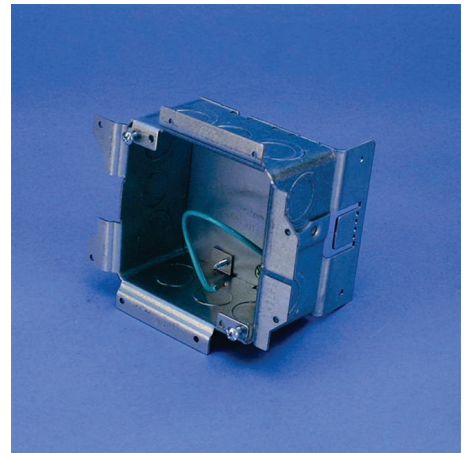
- Complete assembly that is ready to use right out of the box and installs with just two screws
- Open-back design offers faster and easier access to install conduit connectors or wiring
- Mounts to either side of the stud
- Repositions to other stud side without redoing knockouts or rotating devices
- Versatile back plate functions as rigid far-side support or additional stud attachment
- Assembly mounts tight to stud, making it easier to pull and install wiring
- Available in single- or double-gang
- Available with integral mud ring, removable mud ring or without mud ring
- Made in the USA



Stud-Mounted With  
Integral Mud Ring



Stud-Mounted With  
Removable Mud Ring

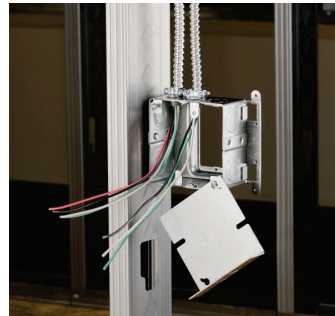
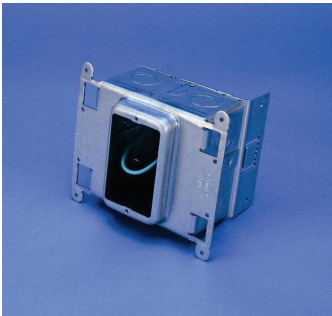


Stud-Mounted Without  
Mud Ring

## Another Road to nVent CADDY Innovation

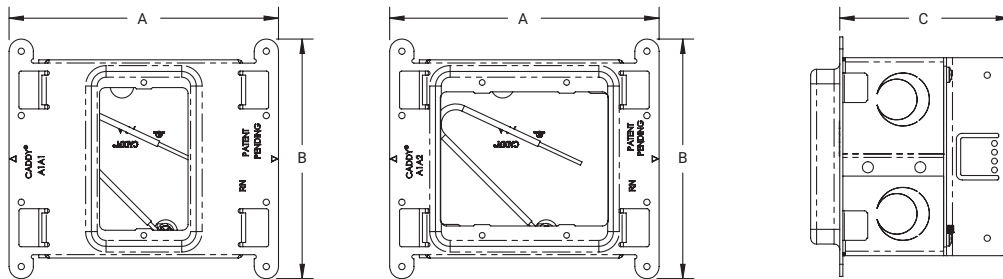


# Stud-Mounted with Integral Mud Ring



## FEATURES

- Ingenious design combines box, support bracket and mud ring into a single, integrated unit
- Fewer parts makes the installation faster and easier
- Center marks provide easy height positioning
- Includes multiple 1/2" and 3/4" knockouts on each side of the box
- Made in the USA



## SPECIFICATIONS

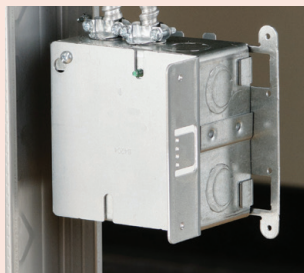
Material: Steel  
Finish: Pre-galvanized



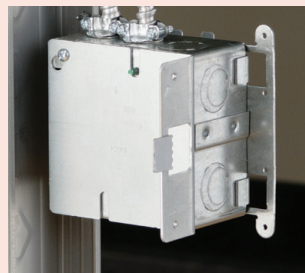
Part Number	Gang	Ground Wire Included	Drywall Thickness	A	B	C
A1SA1N	1	No	5/8"	5 3/4"	5 1/8"	3 5/8"
A1SA1G	1	Yes	5/8"	5 3/4"	5 1/8"	3 5/8"
A1SA2N	2	No	5/8"	5 3/4"	5 1/8"	3 5/8"
A1SA2G	2	Yes	5/8"	5 3/4"	5 1/8"	3 5/8"

Ground wire pigtail is 8".

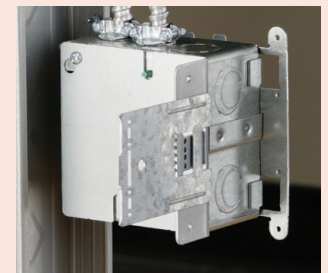
Back plate provides far-side support for multiple stud depths.



3 5/8" stud depth

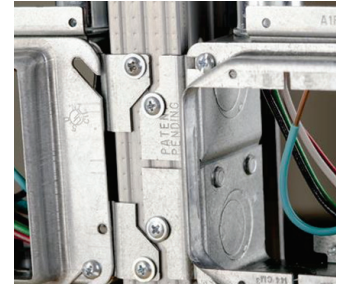
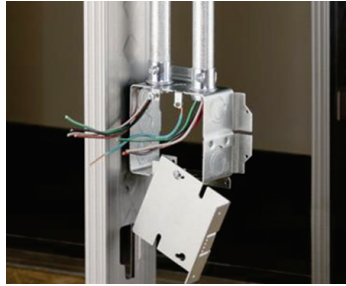
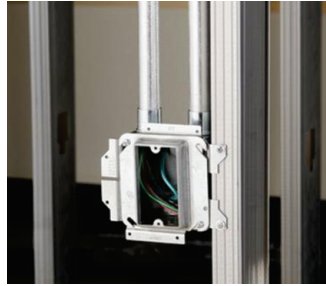
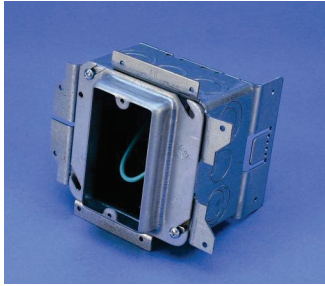


4" stud depth



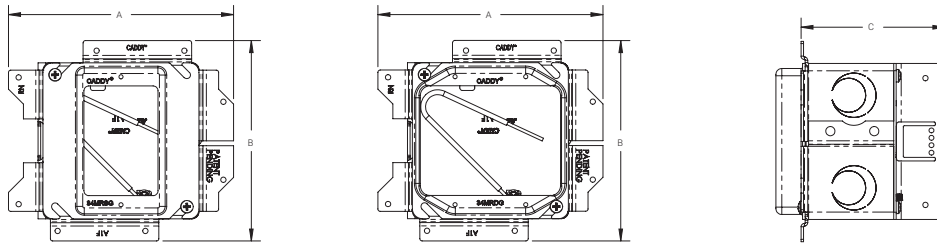
6" stud depth, use with TEB6XT

# Stud-Mounted with Removable Mud Ring



## FEATURES

- Removable mud ring provides front access to the interior of the box
- Box remains fixed in place when mud ring is removed
- Includes multiple 1/2" and 3/4" knockouts on each side of the box
- Assemblies keyed for precise alignment when installed on both sides of a stud
- Made in the USA



## SPECIFICATIONS

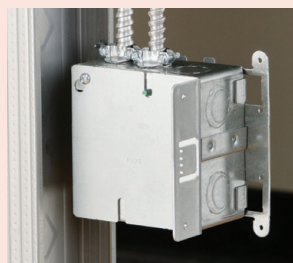
Material: Steel  
Finish: Pre-galvanized



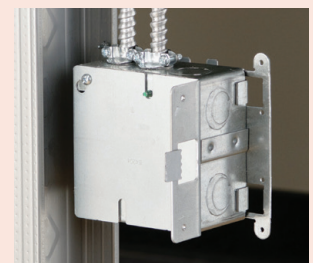
Part Number	Gang	Ground Wire Included	Drywall Thickness	A	B	C
A1SF1G	1	Yes	5/8"	5 3/4"	5 1/8"	3 5/8"
A1SF3G	1	Yes	1 1/4"	5 3/4"	5 1/8"	3 5/8"
A1SF2G	2	Yes	5/8"	5 3/4"	5 1/8"	3 5/8"
A1SF4G	2	Yes	1 1/4"	5 3/4"	5 1/8"	3 5/8"

Ground wire pigtail is 8".

Back plate provides far-side support for multiple stud depths.

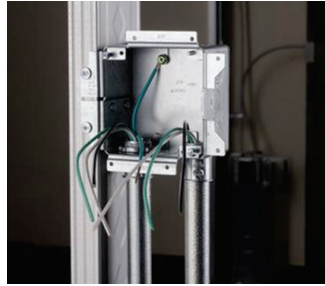
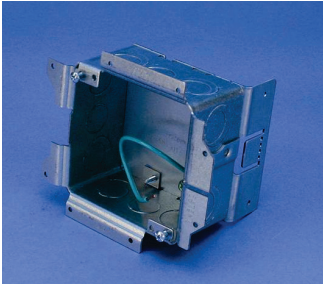


3 5/8" stud depth



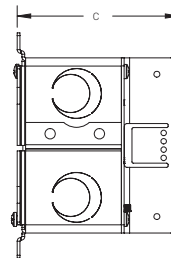
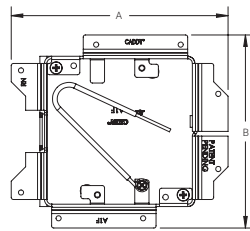
4" stud depth

# Stud-Mounted without Mud Ring



## FEATURES

- Provides the flexibility to add a mud ring for non-standard drywall thicknesses
- Box remains fixed in place when mud ring is removed
- Includes multiple 1/2" and 3/4" knockouts on each side of the box
- Assemblies keyed for precise alignment when installed on both sides of a stud
- Works with standard US and Canadian mud rings
- Made in the USA



## SPECIFICATIONS

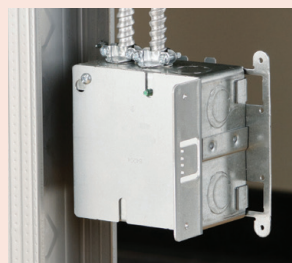
Material: Steel  
Finish: Pre-galvanized



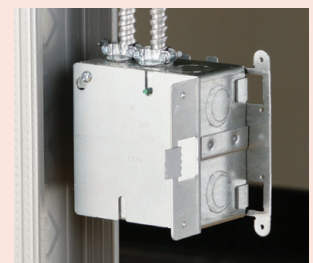
Part Number	Ground Wire Included	A	B	C
A1SF0N	No	5 3/4"	5 1/8"	3 5/8"
A1SF0G	Yes	5 3/4"	5 1/8"	3 5/8"

Ground wire pigtail is 8".

Back plate provides far-side support for multiple stud depths.



3 5/8" stud depth



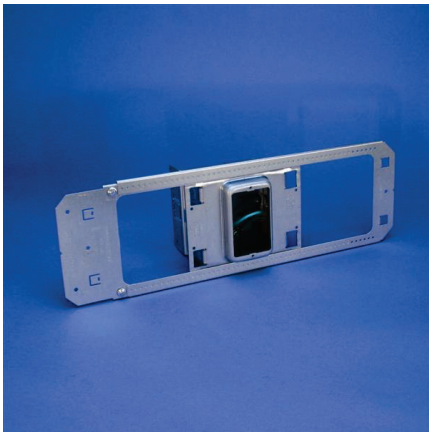
4" stud depth

# Between-Stud Assemblies

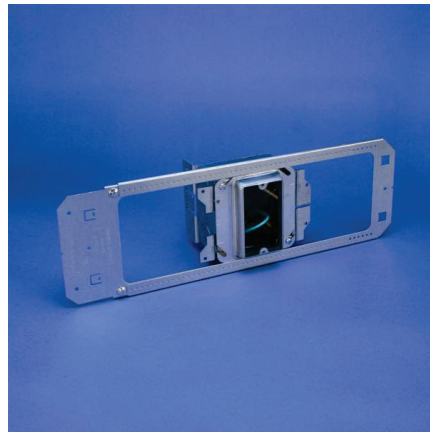
Between-stud electrical assemblies are a fast and easy way to mount, wire and install outlet and switch assemblies between metal studs with just two screws. Part of the innovative product family, this solution combines the electrical box, telescoping support bracket, mud ring, far-side support and ground wire pigtail into ONE unit. The open-back design provides greater access to the box interior, making the installation of conduit connectors and wiring for multiple circuits faster and easier. Between-stud electrical assemblies are available in single- or double-gang and with a number of mud-ring configurations that meet the needs of most between-stud applications.

## FEATURES

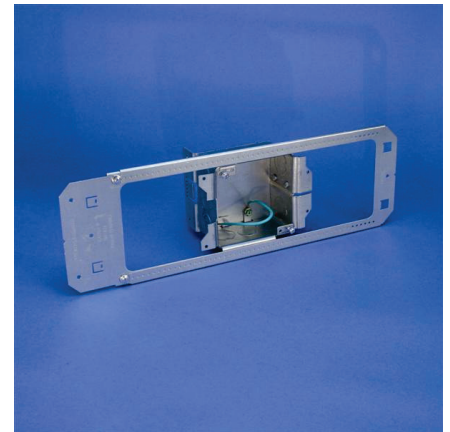
- Complete assembly that is ready to use right out of the box and installs with just two screws
- Box moves side-to-side for exact positioning
- Open-back design offers faster and easier access to install conduit connectors or wiring
- Telescoping bracket accommodates up to three boxes
- Rigid back plate functions as a far-side support and is resistant to bending
- Available in single- or double-gang
- Available with integral mud ring, removable mud ring or without mud ring
- Made in the USA



Between-Stud With  
Integral Mud Ring



Between-Stud With  
Removable Mud Ring



Between-Stud Without  
Mud Ring





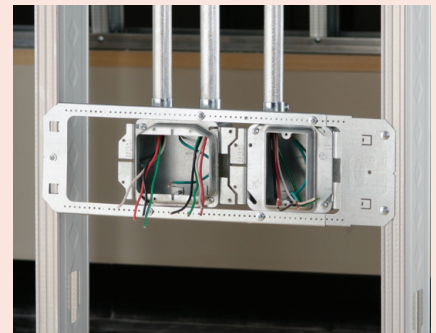
# Between-Stud with Integral Mud Ring



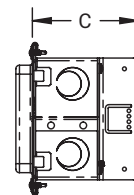
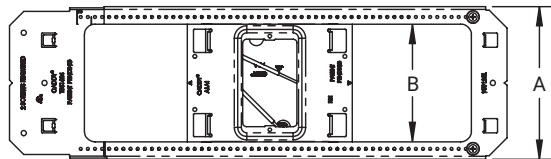
## FEATURES

- Ingenious design combines box, support bracket and mud ring into a single, integrated unit
- Fewer parts makes the installation faster and easier
- Includes two screws to lock box in position
- Pre-bent tabs on support bracket help to quickly square assembly to stud
- Center marks provide easy height positioning
- Includes multiple 1/2" and 3/4" knockouts on each side of the box
- Made in the USA

Telescoping bracket accommodates up to three boxes



Between-Stud Assemblies



## SPECIFICATIONS

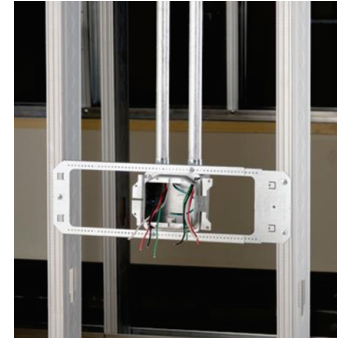
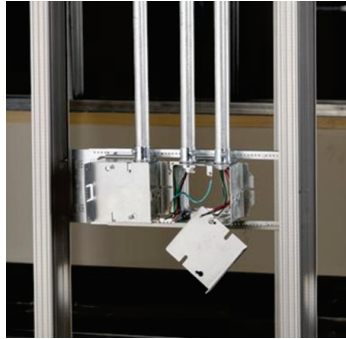
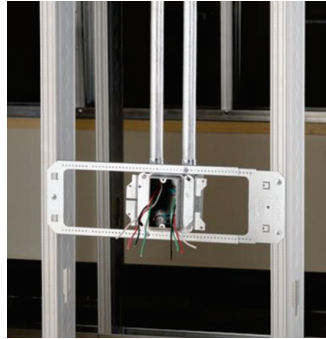
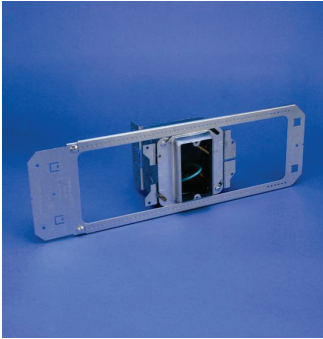
Material: Steel  
 Finish: Pre-galvanized  
 Ground Wire Included: Yes



Part Number	Gang	Drywall Thickness	Stud Spacing	A	B	C
A1BA1G	1	5/8"	16" - 24"	5 3/8"	4 1/8"	3 5/8"
A1BA2G	2	5/8"	16" - 24"	5 3/8"	4 1/8"	3 5/8"

Ground wire pigtail is 8".  
 24" stud spacing requires use of three mounting screws. Use only with box assemblies.

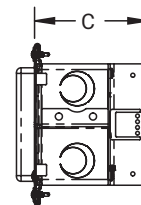
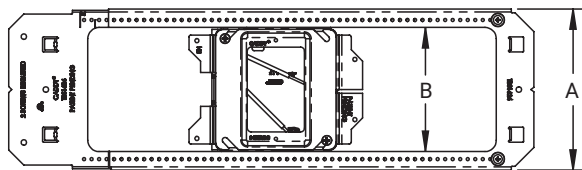
# Between-Stud with Removable Mud Ring



## FEATURES

- Removable mud ring provides front access to the interior of the box
- Box remains fixed in place when mud ring is removed
- Includes two screws to lock box in position
- Pre-bent tabs on support bracket help to quickly square assembly to stud
- Center marks provide easy height positioning
- Includes multiple 1/2" and 3/4" knockouts on each side of the box
- Made in the USA

Telescoping bracket accommodates up to three boxes



## SPECIFICATIONS

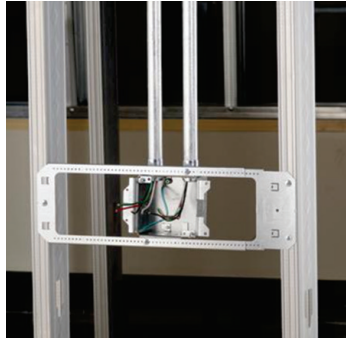
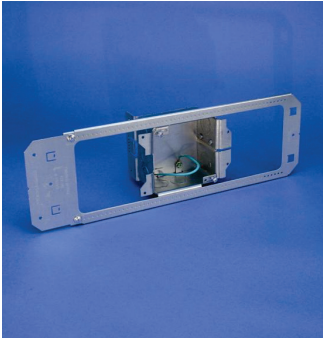
Material: Steel  
 Finish: Pre-galvanized  
 Ground Wire Included: Yes



Part Number	Gang	Drywall Thickness	Stud Spacing	A	B	C
A1BF1G	1	5/8"	16" – 24"	5 3/8"	4 1/8"	3 5/8"
A1BF3G	1	1 1/4"	16" – 24"	5 3/8"	4 1/8"	3 5/8"
A1BF2G	2	5/8"	16" – 24"	5 3/8"	4 1/8"	3 5/8"
A1BF4G	2	1 1/4"	16" – 24"	5 3/8"	4 1/8"	3 5/8"

Ground wire pigtail is 8".  
 24" stud spacing requires use of three mounting screws. Use only with box assemblies.

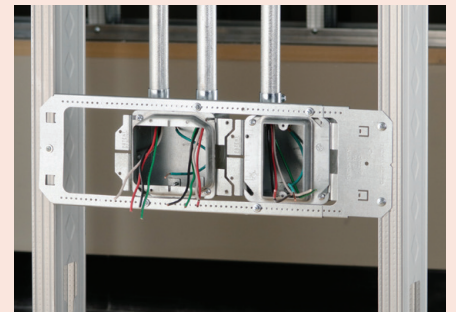
# Between-Stud without Mud Ring



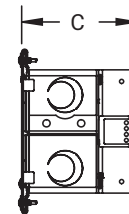
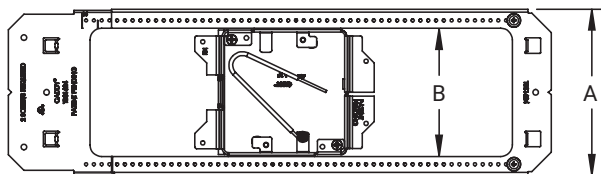
## FEATURES

- Provides the flexibility to add a mud ring for non-standard drywall thicknesses
- Box remains fixed in place when mud ring is removed
- Includes two screws to lock box in position
- Pre-bent tabs on support bracket help to quickly square assembly to stud
- Center marks provide easy height positioning
- Includes multiple 1/2" and 3/4" knockouts on each side of the box
- Works with standard US and Canadian mud rings
- Made in the USA

Telescoping bracket accommodates up to three boxes



Between-Stud Assemblies



## SPECIFICATIONS

Material: Steel  
 Finish: Pre-galvanized  
 Ground Wire Included: Yes



Part Number	Stud Spacing	A	B	C
A1BF0G	16" – 24"	5 3/8"	4 1/8"	3 5/8"

Ground wire pigtail is 8".  
 24" stud spacing requires use of three mounting screws. Use only with box assemblies.

# Floor-Mounted Assemblies

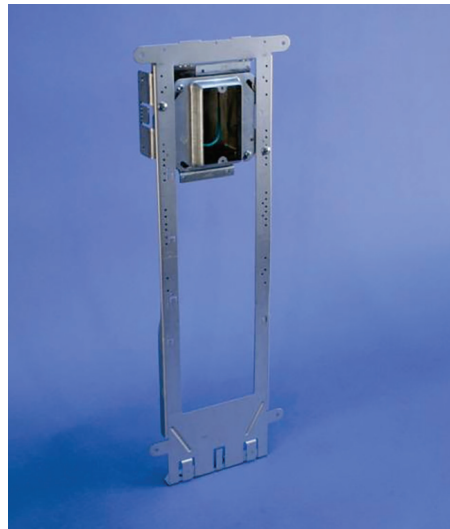
Floor-mounted electrical assemblies are a fast and easy way to mount, wire and install outlet and switch assemblies to stud wall floor track with just two screws. Part of the innovative product family, this solution combines the electrical box, support bracket, mud ring, far-side support, integrated first means of support and ground wire pigtail into ONE unit. The open-back design provides greater access to the box interior, making the installation of conduit connectors and wiring for multiple circuits faster and easier. Floor-mounted electrical assemblies are available in single- or double-gang and with a number of mud-ring configurations that meet the needs of most floor-mounted applications.

## FEATURES

- Complete assembly that is ready to use right out of the box and installs with just two screws
- Open-back design offers faster and easier access to install conduit connectors or wiring
- Provides versatile positioning - independent of wall stud location
- Mounts inside (use mounting tabs) or under floor track
- Integrated first means of support accepts conduit or MC/AC cable
- Rigid back plate functions as a far-side support and is resistant to bending
- Finder tab helps locate electrical box behind drywall
- Available in single- or double-gang
- Available with integral mud ring, removable mud ring or without mud ring
- Made in the USA



Floor-Mounted With Integral Mud Ring



Floor-Mounted With Removable Mud Ring



Floor-Mounted Without Mud Ring



**Another Road to nVent CADDY Innovation**

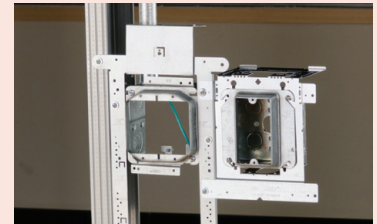
# Floor-Mounted with Integral Mud Ring



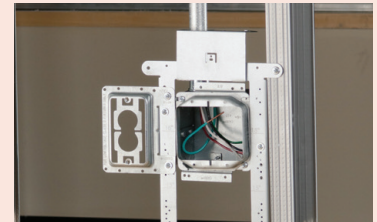
## FEATURES

- Ingenious design combines box, support bracket and mud ring into a single, integrated unit
- Fewer parts makes the installation faster and easier
- Preset to a finish height of 18" from the floor (adjustable 12" or 15")
- Integrated first means of support accepts conduit or MC/AC cable
- Accommodates additional box assemblies, support brackets and low-voltage mounting plates
- Includes multiple 1/2" and 3/4" knockouts on each side of the box
- Made in the USA

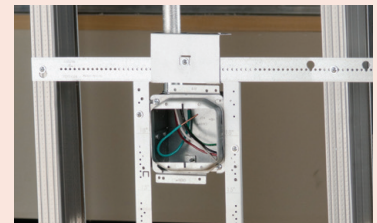
Use with other nVent CADDY products for additional mounting and support needs.



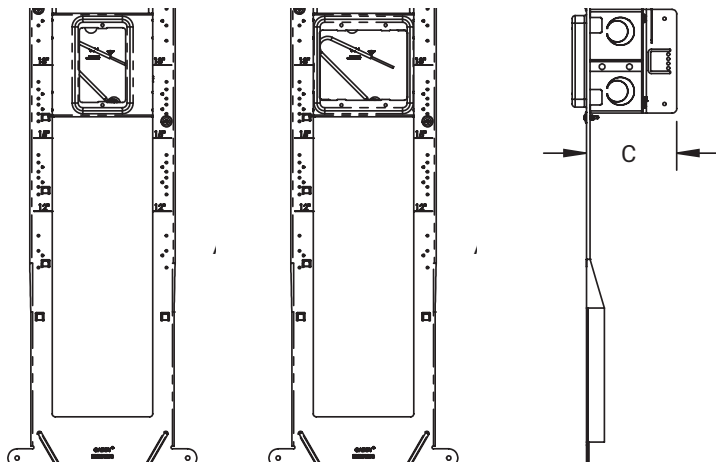
Add electrical boxes laterally with nVent CADDY universal electrical box brackets. TEB23 & TEB4



Add nVent CADDY low-voltage mounting plates for new construction. MP1S & MP2S



Add support between studs with the nVent CADDY electrical box mounting strap. TEBS1624



## SPECIFICATIONS

Material: Steel  
 Finish: Pre-galvanized  
 Ground Wire Included: Yes  
 EMT Conduit Size: 1/2", 3/4"  
 MC/AC Cable Size: 14-2, 14-3, 14-4, 12-2, 12-3



Part Number	Gang	Drywall Thickness	A	B	C	D
A1FA1G	1	5/8"	22 3/16"	7 3/4"	3 5/8"	2 11/16"
A1FA2G	2	5/8"	22 3/16"	7 3/4"	3 5/8"	2 11/16"

Ground wire pigtail is 8".

Floor-Mounted Assemblies

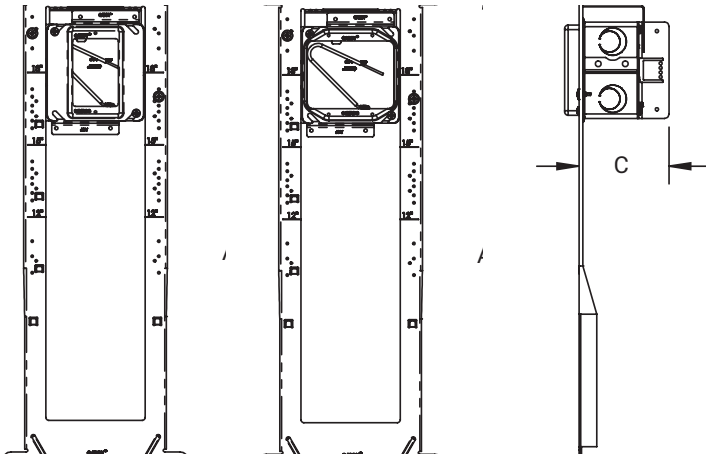
# Floor-Mounted with Removable Mud Ring



Floor-Mounted Assemblies

## FEATURES

- Preset to a finish height of 18" from the floor (adjustable 12" or 15")
- Removable mud ring provides front access to the interior of the box
- Box remains fixed in place when mud ring is removed
- Integrated first means of support accepts conduit or MC/AC cable
- Accommodates additional box assemblies, support brackets and low-voltage mounting plates
- Includes multiple 1/2" and 3/4" knockouts on each side of the box
- Made in the USA



## SPECIFICATIONS

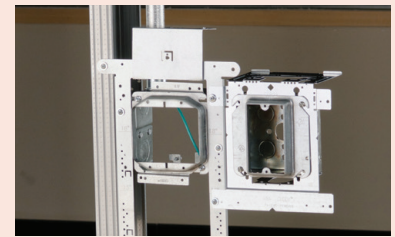
Material: Steel  
 Finish: Pre-galvanized  
 Ground Wire Included: Yes  
 EMT Conduit Size: 1/2", 3/4"  
 MC/AC Cable Size: 14-2, 14-3, 14-4, 12-2, 12-3



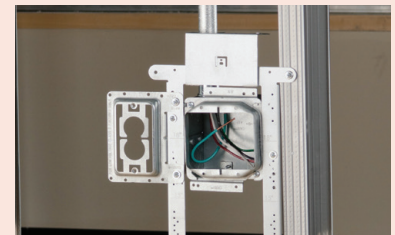
Part Number	Gang	Drywall Thickness	A	B	C	D
A1FF1G	1	5/8"	22 3/16"	7 3/4"	3 5/8"	2 11/16"
A1FF3G	1	1 1/4"	22 3/16"	7 3/4"	3 5/8"	2 11/16"
A1FF2G	2	5/8"	22 3/16"	7 3/4"	3 5/8"	2 11/16"
A1FF4G	2	1 1/4"	22 3/16"	7 3/4"	3 5/8"	2 11/16"

Ground wire pigtail is 8".

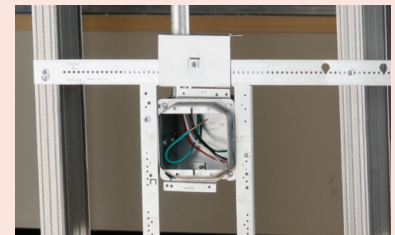
Use with other nVent CADDY products for additional mounting and support needs.



Add electrical boxes laterally with nVent CADDY universal electrical box brackets. TEB23 & TEB4

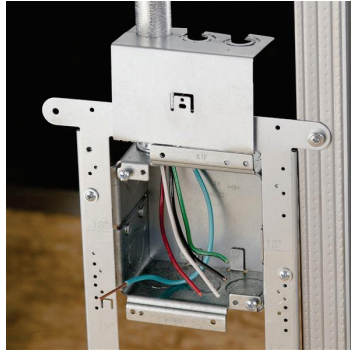


Add nVent CADDY low-voltage mounting plates for new construction. MP1S & MP2S



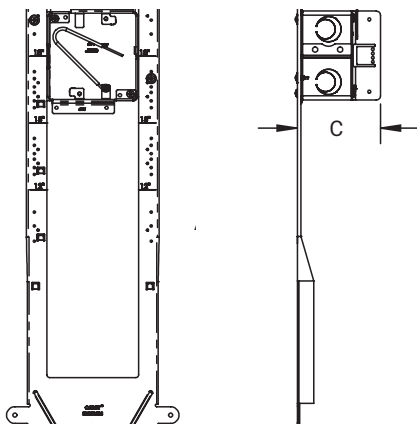
Add support between studs with the nVent CADDY electrical box mounting strap. TEBS1624

# Floor-Mounted without Mud Ring



## FEATURES

- Preset to a finish height of 18" from the floor (adjustable 12" or 15")
- Integrated first means of support accepts conduit or MC/AC cable
- Provides the flexibility to add a mud ring for non-standard drywall thicknesses
- Box remains fixed in place when mud ring is removed
- Accommodates additional box assemblies, support brackets and low-voltage mounting plates
- Includes multiple 1/2" and 3/4" knockouts on each side of the box
- Works with standard US and Canadian mud rings
- Made in the USA



## SPECIFICATIONS

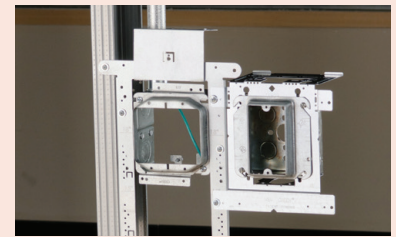
Material: Steel  
 Finish: Pre-galvanized  
 Ground Wire Included: Yes  
 EMT Conduit Size: 1/2", 3/4"  
 MC/AC Cable Size: 14-2, 14-3, 14-4, 12-2, 12-3



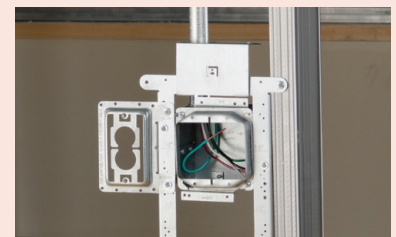
Part Number	A	B	C	D
A1FF0G	22 3/16"	7 3/4"	3 5/8"	2 11/16"

Ground wire pigtail is 8".

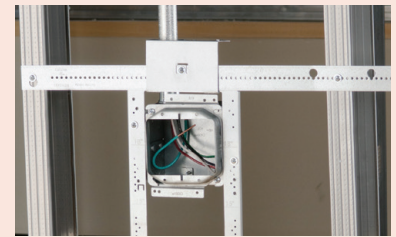
Use with other nVent CADDY products for additional mounting and support needs.



Add electrical boxes laterally with nVent CADDY universal electrical box brackets. TEB23 & TEB4



Add nVent CADDY low-voltage mounting plates for new construction. MP1S & MP2S



Add support between studs with the nVent CADDY electrical box mounting strap. TEBS1624

Our powerful portfolio of brands:

**CADDY ERICO HOFFMAN RAYCHEM SCHROFF TRACER**



[nVent.com/CADDY](https://nVent.com/CADDY)

**WARNING**

nVent products shall be installed and used only as indicated in nVent's product instruction sheets and training materials. Instruction sheets are available at [nVent.com/ERICO](https://nVent.com/ERICO) and from your nVent customer service representative. Improper installation, misuse, misapplication or other failure to completely follow nVent's instructions and warnings may cause product malfunction, property damage, serious bodily injury and/or death, and void your warranty.

©2018 nVent. All nVent marks and logos are owned or licensed by nVent Services GmbH or its affiliates. All other trademarks are the property of their respective owners. nVent reserves the right to change specifications without notice.

CADDY-SB-F1111B-DF956LT12NA-EN-1805