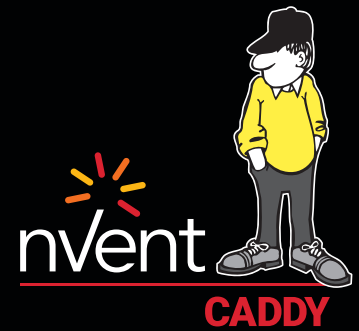


nVent CADDY Pyramid



TOOL-FREE SUPPORTS

The nVent CADDY Pyramid Tool-Free series offers a unique labor saving solution for supporting electrical and mechanical applications on a variety of roof surfaces. The Pyramid Tool-Free series restrains pipe and conduit without the need for strut clamps or installation tools. Superior load distribution and a low abrasion foam interface combine to ensure that the roof membrane is protected despite varying roof surfaces and shifting caused by expansion and contraction.



FEATURES

- Push-in clamps install without the need for additional tools or strut clamps
- Ready to use out of the box, saving installation time and labor
- Plastic clamps and base will not corrode pipe
- Foam bottom offers low abrasion interface for better roof membrane protection
- Provides superior load distribution, even with varying rooftop surfaces
- Compatible with roof surfaces including single ply, bituminous, metal and spray foam
- Easy to transport to the roof
- Supports green building requirements; thermoplastic bases are made from recycled material and can contribute to earning LEED credits



NVENT CADDY PYRAMID TOOL-FREE SUPPORT KIT

Part Number	Length 1 L1	Length 2 L2	Length 3 L3	Width W	Height H	A	B	Surface Area	Unit Weight	Static Load F
PTF6	8"	–	3.2"	6"	4"	4.8"	1.6"	41 in ²	0.6 lb	300 lb
PTF10	12 1/2"	4.8"	6.4"	8"	4"	8.0"	1.6"	92 in ²	1.0 lb	1,000 lb
PTF16	19"	8.0"	9.6"	8"	4"	11.2"	1.6"	142 in ²	2.0 lb	1,500 lb

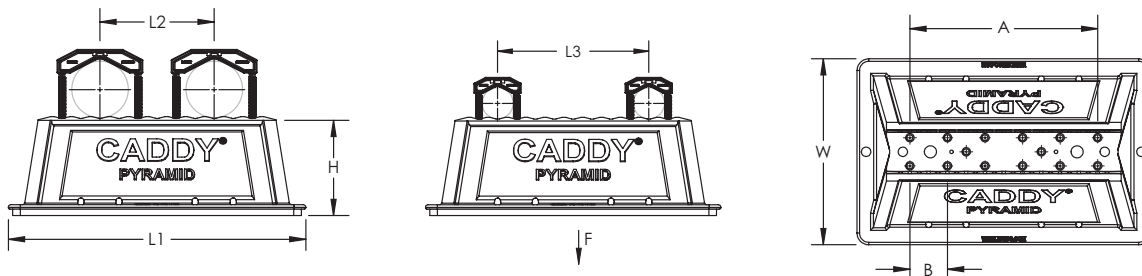
Length 2 represents maximum pipe center to pipe center using PTF2C clamps. Length 3 represents maximum pipe center to pipe center using PTF1C clamps.

Part Number	Number of Clamps Includes		Maximum Clamp Capacity	
	PTF1C	PTF2C	PTF1C	PTF2C
PTF6	1	1	3	1
PTF10	–	2	5	2
PTF16	–	2	7	3

Material: Polyethylene; Polypropylene; Nylon

Temperature: –50 to 150 °F

Static Load Safety Factor: 3:1



NVENT CADDY PYRAMID TOOL-FREE CLAMP

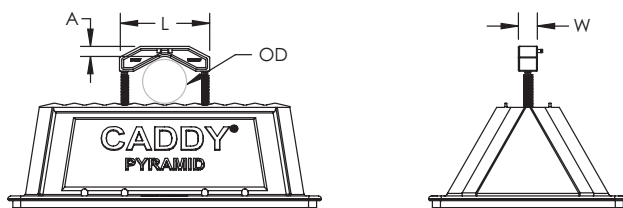
Part Number	Outer Diameter OD	Length L	Width W	A	Unit Weight
PTF1C	0.50" – 1.32"	1.6"	3/4"	3/8"	0.025 lb
PTF2C	0.84" – 2.38"	3.2"	3/4"	3/8"	0.045 lb

Features

- Push-in clamps install without the need for additional tools or strut clamps
- Clamps come in two different sizes to fit project needs
- Plastic clamps and base will not corrode pipe

Material: Nylon

Temperature: –50 to 150 °F



Our powerful portfolio of brands:

CADDY ERICO HOFFMAN RAYCHEM SCHROFF TRACER