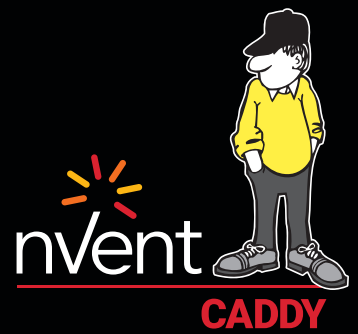


nVent CADDY Macrofix Plus – Non-Insulated



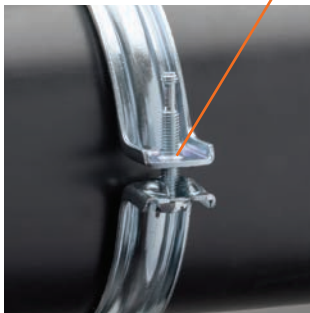
CONNECT AND PROTECT

Features Guide

DURABILITY FEATURES

Engineered embossed design including a central rib and return lips, give the pipe clamp a superior load capacity

Thread impression retains quick locking captive screw and prevents it from falling out during installation

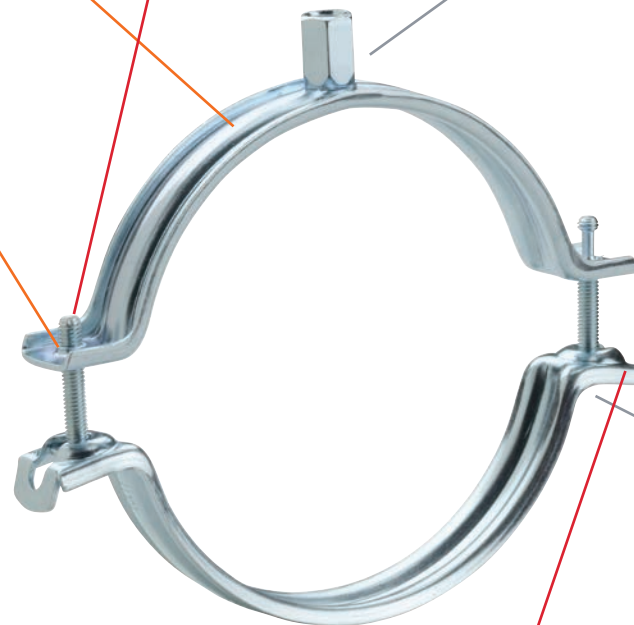


EASE OF INSTALL FEATURES

Longer ears position the screw farther from the hanger, improving tool clearance when the screw is driven down

VERSATILITY FEATURES

Combination nut can be attached to M8 or M10 threaded rod, simplifying material handling



Combo head bolt works with slotted, hex, or Phillips drivers

The color of the line corresponds to the larger goal of each feature:

DURABILITY FEATURES

EASE OF INSTALL FEATURES

VERSATILITY FEATURES

Quick locking system prevents the hanger from accidentally opening when pipe is moved or adjusted, and can be closed with one hand

Increased opening angle easily accommodates all standard-sized pipe up to 220 mm diameter



Our powerful portfolio of brands:

CADDY ERICO HOFFMAN RAYCHEM SCHROFF TRACER

©2021 nVent. All nVent marks and logos are owned or licensed by nVent Services GmbH or its affiliates. All other trademarks are the property of their respective owners. nVent reserves the right to change specifications without notice.

CADDY-FLY-H87120-MacrofixPlusNonIns-UKEN-2106

nVent.com/CADDY