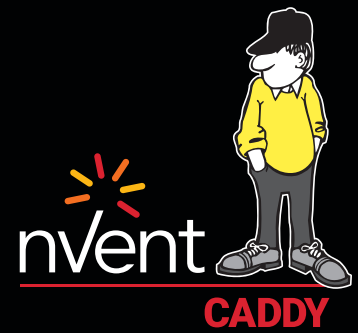


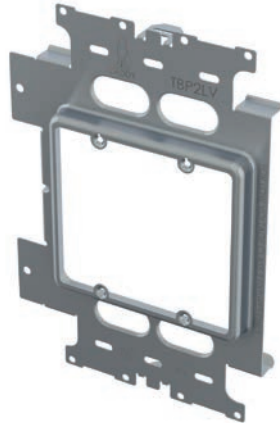
Low Voltage Mounting Plate for Heavy Duty Telescoping Bracket



CONNECT AND PROTECT



TBP1LV



TBP2LV



TBP3LV



TBP4LV

FEATURES

- Provides a bracket for mounting low voltage Class 2 communication outlets
- Snap-on installation to Heavy Duty Telescoping Bracket allows for easy positioning along bracket
- Can also be mounted directly to metal or wood studs
- Use with Box Eliminator Conduit Support (MPCB1220) to eliminate box when datacom cables are run in conduit
- Access holes provide means of securing cables
- Includes locking tab to secure plate to bracket before final securement

Material: Steel
Finish: Pregalvanized



Part Number	Gang	Drywall Thickness	Standard Packaging Quantity
TBP1LV	1	1/2" – 5/8"	25 pc
TBP2LV	2	1/2" – 5/8"	25 pc
TBP3LV	3	1/2" – 5/8"	25 pc
TBP4LV	4	1/2" – 5/8"	25 pc



Our powerful portfolio of brands:

CADDY ERICO HOFFMAN RAYCHEM SCHROFF TRACER

©2022 nVent. All nVent marks and logos are owned or licensed by nVent Services GmbH or its affiliates. All other trademarks are the property of their respective owners. nVent reserves the right to change specifications without notice.

CADDY-DS-H87253-TBP1LV-TBP2LV-USEN-2206

nVent.com/CADDY