

nVent ERICO Surge Protective Devices

SES Family



Table of Contents

- Introduction3
- Service Entrance Suppressor, 40 kA, Metal4
- Service Entrance Suppressor(P), 40 kA5
- Service Entrance Suppressor(B), 160 kA.....6
- Service Entrance Suppressor(F), 160 kA.....7
- Service Entrance Suppressor(B), 320 kA8
- Service Entrance Suppressor(BC), 320 kA9
- Service Entrance Suppressor(F), 320 kA..... 10
- Service Entrance Suppressor(FC), 320 kA 11
- Service Entrance Suppressor(DB), 360 kA..... 12
- Service Entrance Suppressor(DF), 360 kA 13
- Service Entrance Suppressor(DB), 480 kA..... 14
- Service Entrance Suppressor(DF), 480 kA 15
- Filter Model Chart 16
- Accessories 17

Introduction



Protect your facility with the latest from nVent ERICO Surge Protective Devices.

- ✔ Up to 480 kA per phase surge rating in a new compact design
- ✔ Optional filter with up to 64 dB attenuation
- ✔ LED indicators, audible alarms and Form C contacts
- ✔ cUL 1449 Ed. 5 and UL 1283 Ed. 7

nVent ERICO has a range of specialized devices that are unmatched in capabilities and performance, including surge diversion, surge filtering and TD technology.

Although lightning is the most spectacular form of externally generated surges, it is only one source of over-voltage. Significant damage can occur, even to the more robust systems, as a result of lightning induced surges or from switching induced surges. With power quality problems, it is important to correctly identify the problem in order to ensure that the intended preventative equipment is suitable.

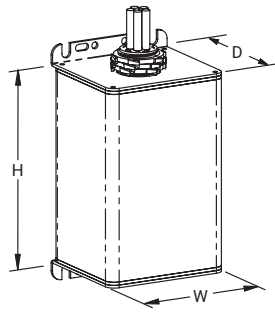
Achieving an adequate level of protection against high and low-level transient events results in prevention of costly downtime. Proper electrical protection of structures, operations

and personnel demands a systematic and comprehensive approach to protection.

nVent ERICO's line of Service Entrance Suppression is designed to protect sensitive electronics at the service entrance for residential or light commercial service panels. These models protect against both surges caused by severe transient events as well as smaller scale disruptions alike.

Learn more about our full SES product line and how it can keep your facility covered, from the ground, up.

Service Entrance Suppressor, 40 kA, Metal



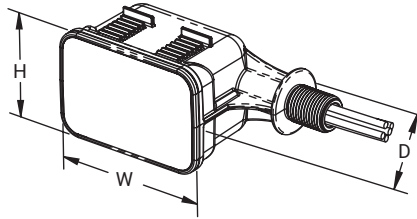
FEATURES

- Compact NEMA®-4 enclosure design can be flush mounted or installed in a small space
- LED status indication flag for status monitoring
- 120/240 VAC operating voltage suits the most common power distribution system for residential or small commercial buildings
- 80 kA 8/20 μ s per phase maximum surge rating provides protection suitable for service entrance and distribution panels



Part Number	SES40120/240
Nominal System Voltage (Un)	120/240 V
Max Continuous Operating Voltage (Uc)	170/276 VAC
Distribution System	1Ph 3W+G
Frequency	50–60 Hz
Short Circuit Current Rating (SCCR)	200 kA
Voltage Protection Rating (VPR)	800 V @ 3 kA; 1,200 V @ 20 kA
Nominal Discharge Current (In)	20 kA 8/20 μ s
Max Discharge Current (Imax), Per Mode	40 kA 8/20 μ s
Protection Modes	L-L; L-N; L-PE
Status Indication	LED
Technology	MOV with thermal disconnect
Lead Length	30"
Lead Size	#10
Ground Lead Length	36"
Temperature	–40 to 176°F
Mounting	¾" straight nipple
Enclosure Rating	IP 65; NEMA®-4
Enclosure Material	Metal
Depth	2.870"
Width	3.270"
Height	3.270"
Unit Weight	1.540 lb
Complies With	ANSI®/IEEE® C62.41.2-2002 Cat A, Cat B, Cat C ANSI®/IEEE® C62.41.2-2002 Scenario II, Exposure 2, 20 kA 8/20 μ s, 2 kA 10/350 μ s IEC® 61643-1 Class II
Certification Details	UL® 1449 Edition 5 Type 1/2, 20 kA Mode
UPC	782856621959
Standard Packaging Quantity	1.0000
Packing Quantity	1.0000

Service Entrance Suppressor(P), 40 kA



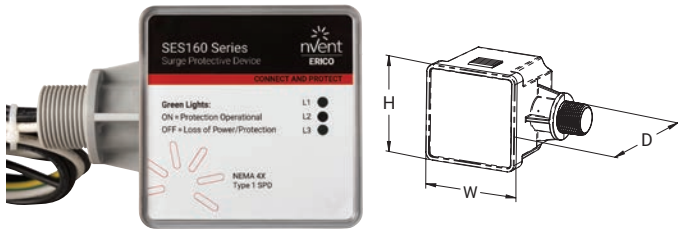
FEATURES

- Compact design can be directly mounted to panel or installed in a small space
- Front-facing design eases installation and performance monitoring
- 40 kA 8/20 μ s maximum surge rating per mode
- UL® 50 Type 4X
- Optional Flush Mounting Plate



Part Number	SES40P 120/240SP	SES40P 1201P	SES40P 2401P	SES40P 4801P	SES40P 2083P	SES40P 4803P	SES40P 300DC
Nominal System Voltage (Un)	120/240 VAC	120 VAC	240 VAC	480 VAC	120/208 VAC	277/480 VAC	300 VDC
Max Continuous Operating Voltage (Uc)	150/300 VAC	150 VAC	300 VAC	590 VAC	150/300 VAC	340/590 VAC	360 VDC
Distribution System	1Ph 2W+G				3Ph 4W+G 3Ph Δ 3W+G		DC 2W+G
Frequency	0–100 Hz						–
Short Circuit Current Rating (SCCR)	200 kA						100 kA
Voltage Protection Rating (VPR), L-L	1,800 V	–	–	–	1,800 V	2,500 V	1200 V @ 3 kA
Voltage Protection Rating (VPR), L-N	900 V	1,800 V	2,500 V	1,500 V	800 V	1,500 V	1,500 V
Voltage Protection Rating (VPR), L-PE	–	900 V	1,500 V	2,500 V	1,800 V	2,500 V	1,500 V
Voltage Protection Rating (VPR), N-PE	–	900 V	1,200 V	1,500 V	800 V	1,500 V	2,500 V
Nominal Discharge Current (In), Per Mode	20 kA 8/20 μ s						
Max Discharge Current (Imax), Per Mode	40 kA 8/20 μ s						
Technology	MOV with thermal disconnect						
Status Indication	Blue LED						
Lead Size	#12						
Lead Length	36"						30"
Temperature	–40 to 176°F						
Mounting	½" straight nipple						¾" straight nipple
Enclosure Rating	NEMA®-4X; UL® 50E Type 4X						NEMA®-4X
Enclosure Material	UL® 94V-0 Thermoplastic						
Depth (D)	3"						
Width (W)	4¾"						
Height (H)	2¾"						
Unit Weight	0.550 lb				0.850 lb		0.55 lb
Complies With	ANSI®/IEEE® C62.41.2-2002 Cat A, Cat B, Cat C						
Certification Details	UL® 1449 Edition 5 Type 1/2, 20 kA Mode CSA C22.2 No. 269.1-17						UL® 1449 Edition 5 for DC General Use

Service Entrance Suppressor(B), 160 kA



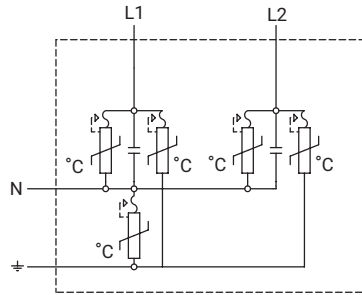
FEATURES

- 160 kA 8/20 μ s maximum surge rating per phase
- Excellent clamping, low UL voltage protection ratings
- Relay alarming for power/phase loss and surge protective device health
- Compact design can be directly mounted to panel or installed in a small space
- Optional Flush Mounting Plate (p/n SES160BFP)



Part Number	SES160B 120240SP	SES160B 120V	SES160B 208Y	SES160B 240D	SES160B 240V	SES160B 480D	SES160B 480Y	SES160B 120240D	SES160B 600Y
Nominal System Voltage (Un)	120/240 V	120 V	120/208 V	240 V	240 V	480 V	277/480 V	120/240 V	347/600 V
Max Continuous Operating Voltage (Uc)	180/360 V	180 V	150/300 V	275 V	350 V	550 V	350/700 V	180/275 V	440/880 V
Distribution System	1Ph 3W+G	1Ph 2W+G	3Ph Y 4W+G	3Ph Δ 3W+G	1Ph 2W+G	3Ph Δ 3W+G	3Ph Y 4W+G	3Ph Δ 4W+G	3Ph Y 4W+G
Frequency	0–600 Hz								
Short Circuit Current Rating (SCCR)	200 kA								
Voltage Protection Rating (VPR), L-L	1,200 V	–	1,000 V	1,200 V	–	1,800 V	2,000 V	1,200 V 1,500 V	2,500 V
Voltage Protection Rating (VPR), L-N	700 V	700 V	600 V	–	1,200 V	–	1,200 V	700 V 900 V	1,500 V
Voltage Protection Rating (VPR), L-PE	700 V	700 V	700 V	1,000 V	1,000 V	1,800 V	1,000 V	700 V 1,000 V	1,500 V
Voltage Protection Rating (VPR), N-PE	600 V	600 V	500 V	–	1,000 V	–	1,000 V	700 V 1,000 V	1,500 V
Nominal Discharge Current (In), Per Mode	20 kA 8/20 μ s								
Max Discharge Current (Imax), Per Phase	160 kA 8/20 μ s								
Protection Modes	All modes protected								
Status Indication	1 green LED per line; Audible alarm; Form C Dry Contacts								
Remote Contacts	Yes								
Remote Contact Switching Capacity	2.0 A @ 240 V								
Lead Length	18"								
Lead Size	#12								
Temperature	–40 to 185°F								
Mounting	3/4" straight nipple								
Enclosure Rating	NEMA®-4X; UL® 50E Type 4								
Enclosure Material	Polycarbonate								
Depth	2.93"								
Width	3 1/4"								
Height	4.2"								
Unit Weight	1.16 lb								
Complies With	ANSI®/IEEE® C62.41.2-2002 Cat A, Cat B, Cat C ANSI®/IEEE® C62.41.1-2002 Cat A, Cat B, Cat C ANSI®/IEEE® C62.45-2002 Cat A, Cat B, Cat C								
Certification Details	CSA C22.2 No. 269.1; UL® 1449 Edition 5 Type 1/2, 20 kA Mode								

Service Entrance Suppressor(F), 160 kA

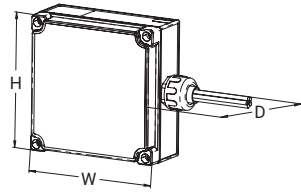


FEATURES

- Compact design can be directly mounted to panel or installed in a small space
- Front-facing design eases installation and performance monitoring
- 160 kA 8/20 μ s maximum surge rating per phase
- Up to 57 dB attenuation (10 kHz to 100 MHz) per MIL-STD 220A
- Optional Flush Mounting Plate (p/n SES160FFP)
- Ground reference monitoring triggers an alarm when N-PE mode exceeds 20 volts

Part Number	SES160F 120240SP	SES160F 120V	SES160F 208Y	SES160F 240D	SES160F 240V	SES160F 480D	SES160F 480Y	SES160F 120240D	SES160F 600Y
Nominal System Voltage (Un)	120/240 V	120 V	120/208 V	240 V	240 V	480 V	277/480 V	120/240 V	347/600 V
Max Continuous Operating Voltage (Uo)	180/360 V	180 V	150/300 V	275 V	350 V	550 V	350/700 V	180/275 V	440/880 V
Distribution System	1Ph 3W+G	1Ph 2W+G	3Ph Y 4W+G	3Ph Δ 3W+G	1Ph 2W+G	3Ph Δ 3W+G	3Ph Y 4W+G	3Ph Δ 4W+G	3Ph Y 4W+G
Filtering	-40 dB @ 100 kHz								
Frequency	0-600 Hz								
Short Circuit Current Rating (SCCR)	200 kA								
Voltage Protection Rating (VPR), L-L	1,200 V	-	1,200 V	1,200 V	-	1,800 V	2,500 V	1,500 V 1,500 V	2,500 V
Voltage Protection Rating (VPR), L-N	700 V	700 V	700 V	-	1,200 V	-	1,200 V	8,00 V 1,000 V	1,500 V
Voltage Protection Rating (VPR), L-PE	700 V	700 V	700 V	1,000 V	1,200 V	1,800 V	1,200 V	700 V 1,000 V	1,500 V
Voltage Protection Rating (VPR), N-PE	700 V	700 V	600 V	-	1,200 V	-	1,200 V	700 V 1,000 V	1,500 V
Nominal Discharge Current (In), Per Mode	20 kA 8/20 μ s								
Max Discharge Current (Imax), Per Phase	160 kA 8/20 μ s								
Protection Modes	All modes protected								
Status Indication	1 green LED per line Audible alarm; Flashing red status LED; Form C Dry Contacts								
Remote Contacts	Yes								
Remote Contact Switching Capacity	2.0 A @ 240 V								
Lead Length	18"								
Lead Size	#12								
Temperature	-40 to 185°F								
Mounting	3/4" straight nipple								
Enclosure Rating	NEMA®-4X; UL® 50E Type 4								
Enclosure Material	Polycarbonate								
Depth	3.06"								
Width	2 3/4"								
Height	7.95"								
Unit Weight	1.38 lb								
Complies With	ANSI®/IEEE® C62.41.2-2002 Cat A, Cat B, Cat C ANSI®/IEEE® C62.41.1-2002 Cat A, Cat B, Cat C ANSI®/IEEE® C62.45-2002 Cat A, Cat B, Cat C								
Certification Details	CSA C22.2 No. 269.2; UL® 1283 Edition 7; UL® 1449 Edition 5 Type 2, 20 kA Mode								

Service Entrance Suppressor(B), 320 kA



FEATURES

- 320 kA 8/20 μ s maximum surge rating per phase
- Excellent clamping, low UL voltage protection ratings
- Relay alarming for power/phase loss and surge protective device health
- Compact design can be directly mounted to panel or installed in a small space
- Ground reference monitoring triggers an alarm when N-PE mode exceeds 20 volts
- Optional Flush Mounting Plate (SES320FP)
- 10-year limited warranty



Part Number	SES320B 120240D	SES320B 120240SP	SES320B 120V	SES320B 208Y	SES320B 240D	SES320B 240V	SES320B 480D	SES320B 480Y
Nominal System Voltage (Un)	120/240 V		120 V	120/208 V	240 V		480 V	277/480 V
Max Continuous Operating Voltage (Uc)	180/275 V	180/360 V	180 V	150/300 V	275 V	350 V	550 V	350/700 V
Distribution System	3Ph Δ 4W+G	1Ph 3W+G	1Ph 2W+G	3Ph Y 4W+G	3Ph Δ 3W+G	1Ph 2W+G	3Ph Δ 3W+G	3Ph Y 4W+G
Frequency	0–600 Hz							
Short Circuit Current Rating (SCCR)	200 kA							
Voltage Protection Rating (VPR), L-G	800 V 900 V	800 V		700 V	900 V	1,200 V	1,800 V	1,200 V
Voltage Protection Rating (VPR), L-L	1,200 V 1,500 V	1,200 V	–	1,000 V	1,800 V	–	3,000 V	2,000 V
Voltage Protection Rating (VPR), L-N	800 V 1,000 V	700 V		600 V	–	1,200 V	–	1,200 V
Voltage Protection Rating (VPR), N-G	700 V	600 V		700 V	–	1,000 V	–	1,000 V
Nominal Discharge Current (In), Per Mode	20 kA 8/20 μ s							
Max Discharge Current (Imax), Per Phase	320 kA 8/20 μ s							
Protection Modes	All modes protected							
Status Indication	1 green LED per line; Dual color status LED, flashing red for faults; Audible alarm							
Remote Contacts	Yes, Form C							
Remote Contact Switching Capacity	2.0 A @ 240 V							
Lead Length	36"							
Lead Size	#10							
Temperature	–40 to 185°F							
Mounting	3/4" straight nipple							
Enclosure Rating	NEMA®-4X; UL® 50E Type 4							
Enclosure Material	Polycarbonate							
Depth	2.99"							
Width	8.38"							
Height	6.89"							
Unit Weight	1.38 lb							
Complies With	ANSI®/IEEE® C62.41.2-2002 Cat A, Cat B, Cat C ANSI®/IEEE® C62.41.1-2002 Cat A, Cat B, Cat C ANSI®/IEEE® C62.45-2002 Cat A, Cat B, Cat C							
Certification Details	CSA C22.2 No. 269.1; UL® 1449 Edition 5 Type 1/2, 20 kA Mode							

Service Entrance Suppressor(BC), 320 kA



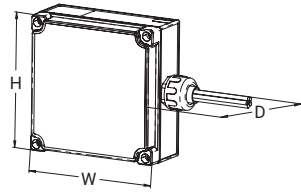
FEATURES

- 320 kA 8/20 μ s maximum surge rating per phase
- Excellent clamping and low UL voltage protection ratings
- Features relay alarming for power/phase loss and status of SPD health
- Compact design can be directly mounted to panel or installed in a small space
- Ground reference monitoring triggers an alarm when N-PE mode exceeds 20 volts
- Optional Flush Mounting Plate (SES320FP)
- 10-year limited warranty
- Digital Surge Counter Utilizing Non-volatile Memory



Part Number	SES320BC 208Y	SES320BC 120V	SES320BC 120240S	SES320BC 120240D	SES320BC 240D	SES320BC 240V	SES320BC 480Y	SES320BC 480D	SES320BC 600Y
Nominal System Voltage (Un)	120/208 V	120 V	120/240 V	120/240 V	240 V	240 V	277/480 V	480 V	347/600 V
Max Continuous Operating Voltage (Uc)	150/300 V	180 V	180/360 V	180/275 V	275 V	350 V	350/700 V	550 V	440/880 V
Distribution System	3Ph Y 4W+G	1Ph 2W+G	1Ph 3W+G	3Ph Δ 4W+G	3Ph Δ 3W+G	1Ph 2W+G	3Ph Y 4W+G	3Ph Δ 3W+G	3Ph Y 4W+G
Frequency	0–600 Hz								
Short Circuit Current Rating (SCCR)	200 kA								
Voltage Protection Rating (VPR), L-G	700 V	800 V	800 V	800 V, 900 V	900 V	1,200 V	1,200 V	1,800 V	1,500 V
Voltage Protection Rating (VPR), L-L	1,000 V	–	1,200 V	1,200 V, 1,500 V	1,200 V	–	2,000 V	1,800 V	2,500 V
Voltage Protection Rating (VPR), L-N	600 V	700 V	700 V	800 V, 1,000 V	–	1,200 V	1,200 V	–	1,500 V
Voltage Protection Rating (VPR), N-G	700 V	600 V	600 V	700 V	–	1,000 V	1,000 V	–	1,500 V
Nominal Discharge Current (In), Per Mode	20 kA 8/20 μ s								
Max Discharge Current (Imax), Per Phase	320 kA 8/20 μ s								
Status Indication	1 green LED per line, Dual color status LED, flashing red for faults, Audible alarm, Surge counter								
Remote Contacts	Yes								
Remote Contact Switching Capacity	2.0 A @ 240 V								
Lead Length	36 in								
Lead Size	10								
Temperature	–40 to 185°F								
Mounting	¾" straight nipple								
Enclosure Rating	NEMA®-4X, UL® 50E Type 4								
Enclosure Material	Polycarbonate								
Depth	2.99 in								
Width	8.38 in								
Height	6.89 in								
Unit Weight	1.38 lb								
Complies With	ANSI®/IEEE® C62.41.1-2002 Cat A, Cat B, Cat C ANSI®/IEEE® C62.41.1-2002 Cat A, Cat B, Cat C ANSI®/IEEE® C62.45-2002 Cat A, Cat B, Cat C								
Certification Details	CSA C22.2 No. 269.1, UL® 1449 Edition 5 Type 1/2, 20 kA Mode								

Service Entrance Suppressor(F), 320 kA



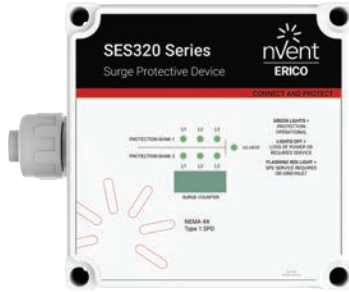
FEATURES

- Compact design can be directly mounted to panel or installed in a small space
- Front-facing design eases installation and performance monitoring
- 320 kA 8/20 μ s maximum surge rating per phase
- Up to 60 dB attenuation (10 kHz to 100 MHz) per MIL-STD 220A
- Ground reference monitoring triggers an alarm when N-PE mode exceeds 20 volts
- Optional Flush Mounting Plate (SES320FP)
- 10-year limited warranty



Part Number	SES320F 120240D	SES320F 120240SP	SES320F 120V	SES320F 208Y	SES320F 240D	SES320F 240V	SES320F 480D	SES320F 480Y
Nominal System Voltage (Un)	120/240 V		120 V	120/208 V	240 V		480 V	277/480 V
Max Continuous Operating Voltage (Uc)	180/275 V	180/360 V	180 V	150/300 V	275 V	350 V	550 V	350/700 V
Distribution System	3Ph Δ 4W+G	1Ph 3W+G	1Ph 2W+G	3Ph Y 4W+G	3Ph Δ 3W+G	1Ph 2W+G	3Ph Δ 3W+G	3Ph Y 4W+G
Filtering	-40 dB @ 100 kHz							
Frequency	0-600 Hz							
Short Circuit Current Rating (SCCR)	200 kA							
Voltage Protection Rating (VPR), L-G	800 V 900 V	800 V		700 V	900 V	1,200 V	1,800 V	1,200 V
Voltage Protection Rating (VPR), L-L	1,200 V 1,500 V	1,200 V	-	1,000 V	1,800 V	-	3,000 V	2,000 V
Voltage Protection Rating (VPR), L-N	800 V 1,000 V	700 V		600 V	-	1,200 V	-	1,200 V
Voltage Protection Rating (VPR), N-G	700 V	600 V		700 V	-	1,000 V	-	1,000 V
Nominal Discharge Current (In), Per Mode	20 kA 8/20 μ s							
Max Discharge Current (Imax), Per Phase	320 kA 8/20 μ s							
Protection Modes	All modes protected							
Status Indication	1 green LED per line; Dual color status LED, flashing red for faults; Audible alarm							
Remote Contacts	Yes, Form C							
Remote Contact Switching Capacity	2.0 A @ 240 V							
Lead Length	36"							
Lead Size	#10							
Temperature	-40 to 185°F							
Mounting	3/4" straight nipple							
Enclosure Rating	NEMA®-4X; UL® 50E Type 4							
Enclosure Material	Polycarbonate							
Depth	2.99"							
Width	8.38"							
Height	6.89"							
Unit Weight	1.38 lb							
Complies With	ANSI®/IEEE® C62.41.2-2002 Cat A, Cat B, Cat C ANSI®/IEEE® C62.41.1-2002 Cat A, Cat B, Cat C ANSI®/IEEE® C62.45-2002 Cat A, Cat B, Cat C Mil-Std 220A							
Certification Details	CSA C22.2 No. 269.2; UL® 1283 Edition 7; UL® 1449 Edition 5 Type 2, 20 kA Mode							

Service Entrance Suppressor(FC), 320 kA



FEATURES

- Compact design can be directly mounted to panel or installed in a small space
- Front-facing design simplifies installation and performance monitoring
- 320 kA 8/20 μ s maximum surge rating per phase
- Up to 60 dB attenuation (10 kHz to 100 MHz)
- Ground reference monitoring triggers an alarm when N-PE mode exceeds 20 volts
- Optional Flush Mounting Plate (SES320FP)
- 10-year limited warranty
- Digital Surge Counter Utilizing Non-volatile Memory



Part Number	SES320FC 208Y	SES320FC 120V	SES320FC 120240S	SES320FC 120240D	SES320FC 240D	SES320FC 240V	SES320FC 480Y	SES320FC 480D	SES320FC 600Y
Nominal System Voltage (Un)	120/208 V	120 V	120/240 V		240 V		277/480 V	480 V	347/600 V
Max Continuous Operating Voltage (Uc)	150/300 V	180 V	180/360 V	180/275 V	275 V	350 V	350/700 V	550 V	440/880 V
Distribution System	3Ph Y 4W+G	1Ph 2W+G	1Ph 3W+G	3Ph Δ 4W+G	3Ph Δ 3W+G	1Ph 2W+G	3Ph Y 4W+G	3Ph Δ 3W+G	3Ph Y 4W+G
Frequency	0–600 Hz								
Filtering	–40 dB @ 100 kHz dB								
Short Circuit Current Rating (SCCR)	200 kA								
Voltage Protection Rating (VPR), L-G	700 V	800 V		800 V, 900 V	900 V	1,200 V		1,800 V	1,500 V
Voltage Protection Rating (VPR), L-L	1,000 V	–	1,200 V	1,200 V, 1,500 V	1,200 V	–	2,000 V	1,800 V	2,500 V
Voltage Protection Rating (VPR), L-N	600 V	700 V		800 V, 1,000 V	–	1,200 V		–	1,500 V
Voltage Protection Rating (VPR), N-G	700 V	600 V		700 V	–	1,000 V		–	1,500 V
Nominal Discharge Current (In), Per Mode	20 kA 8/20 μ s								
Max Discharge Current (Imax), Per Phase	320 kA 8/20 μ s								
Status Indication	1 green LED per line, Dual color status LED, flashing red for faults, Audible alarm, Surge counter								
Remote Contacts	Yes								
Remote Contact Switching Capacity	2.0 A @ 240 V								
Lead Size	10								
Lead Length	36 in								
Temperature	–40 to 185°F								
Mounting	3/4" straight nipple								
Enclosure Rating	NEMA®-4X, UL® 50E Type 4								
Enclosure Material	Polycarbonate								
Depth	2.99 in								
Width	8.38 in								
Height	6.89 in								
Unit Weight	1.38 lb								
Complies With	ANSI®/IEEE® C62.41.1-2002 Cat A, Cat B, Cat C ANSI®/IEEE® C62.41.1-2002 Cat A, Cat B, Cat C ANSI®/IEEE® C62.45-2002 Cat A, Cat B, Cat C								
Certification Details	CSA C22.2 No. 269.1, UL® 1449 Edition 5 Type 2, 20 kA Mode								

Service Entrance Suppressor(DB), 360 kA



FEATURES

- Front-facing design simplifies installation and performance monitoring
- 360 kA 8/20 μ s maximum surge rating per phase
- Advanced monitoring includes Surge and TOV Counters with time and date stamping
- Rotatable, full color graphics-based LCD utilizing a PIC Micro Controller
- Repetitive impulse tested to 10,000 strikes per mode
- Rotary Disconnect included, standard for safe servicing
- 10-year limited warranty



Part Number	SES360DB 208Y	SES360DB 120240S	SES360DB 120240D	SES360DB 240480S	SES360DB 240480D	SES360DB 480Y	SES360DB 600Y	SES360DB 480D
Nominal System Voltage (Un)	120/208 V	120/240 V		240/480 V		277/480 V	347/600 V	480 V
Max Continuous Operating Voltage (Uc)	150/300 V	175/350 V	175/275 V	320/550 V	350/550 V	320/700 V	420/880 V	550 V
Distribution System	3Ph Y 4W+G	1Ph 3W+G	3Ph Δ 4W+G	1Ph 3W+G	3Ph Δ 4W+G	3Ph Y 4W+G	3Ph Y 4W+G	3Ph Δ 3W+G
Frequency	0–600 Hz							
Short Circuit Current Rating (SCCR)	200 kA							
Voltage Protection Rating (VPR), L-G	800 V	800 V	1,000 V, 1,000 V	1,200 V	1,800 V, 1,800 V	1,200 V	1,500 V	1,800 V
Voltage Protection Rating (VPR), L-L	1,000 V	1,800 V	1,200 V, 1,500 V	2,500 V	2,000 V, 2,500 V	2,000 V	2,500 V	1,800 V
Voltage Protection Rating (VPR), L-N	800 V	800 V	800 V, 1,000 V	1,200 V	1,200 V, 1,800 V	1,200 V	1,500 V	–
Voltage Protection Rating (VPR), N-G	800 V	800 V	800 V	1,200 V	1,200 V	1,200 V	1,500 V	–
Nominal Discharge Current (In), Per Mode	20 kA							
Max Discharge Current (Imax), Per Phase	360 kA 8/20 μ s							
Status Indication	2 Tri Color LEDs per phase, Audible Alarm with Silence Switch, Graphics-based LCD with Resettable Surge and TOV Counter with Time/Date Stamp							
Remote Contacts	Yes							
Remote Contact Switching Capacity	5.0 A @ 240 V							
Lead Size	#10–#6							
Temperature	–31 to 167°F							
Mounting	Flange Mount							
Enclosure Rating	NEMA 4, UL 50E Type 4							
Enclosure Material	Metal							
Depth	13.19 in							
Width	7.23 in							
Height	16.79 in							
Unit Weight	18.2 lb							
Impulse Life	10,000 Impulses at 10 kA 8/20 μ s							
Complies With	ANSI®/IEEE® C62.41.2-2002 Cat A, Cat B, Cat C ANSI®/IEEE® C62.41.1-2002 Cat A, Cat B, Cat C ANSI®/IEEE® C62.45-2002 Cat A, Cat B, Cat C UL® 96A and NEC® Article 285							
Certification Details	CSA C22.2 No. 269.1, UL® 1449 Edition 5 Type 1/2, 20 kA Mode							

Service Entrance Suppressor(DF), 360 kA



FEATURES

- Front-facing design simplifies installation and performance monitoring
- 360 kA 8/20 μ s maximum surge rating per phase
- Up to 64 dB attenuation (10 kHz to 100 MHz)
- Advanced monitoring includes Surge and TOV Counters with time and date stamping
- Rotatable, full color graphics-based LCD utilizing a PIC Micro Controller
- Repetitive impulse tested to 10,000 strikes per mode
- Rotary Disconnect included, standard for safe servicing
- 10-year limited warranty



Part Number	SES360DF 208Y	SES360DF 120240D	SES360DF 240480S	SES360DF 240480D	SES360DF 480Y	SES360DF 600Y	SES360DF 480D	SES360DF 120240S
Nominal System Voltage (Un)	120/208 V	120/240 V	240/480 V		277/480 V	347/600 V	480 V	120/240 V
Max Continuous Operating Voltage (Uc)	150/300 V	175/275 V	320/550 V	350/550 V	320/700 V	420/880 V	550 V	175/350 V
Distribution System	3Ph Y 4W+G	3Ph Δ 4W+G	1Ph 3W+G	3Ph Δ 4W+G	3Ph Y 4W+G	3Ph Y 4W+G	3Ph Δ 3W+G	1Ph 3W+G
Frequency	0–600 Hz							
Filtering	–64 dB from 10 kHz to 100 MHz							
Short Circuit Current Rating (SCCR)	200 kA							
Voltage Protection Rating (VPR), L-G	800 V	1,000 V, 1,000 V	1,200 V	1,800 V, 1,800 V	1,200 V	1,500 V	1,800 V	800 V
Voltage Protection Rating (VPR), L-L	1000 V	1,200 V, 1,500 V	2,000 V	2,000 V, 2,500 V	2,000 V	2,500 V	1,800 V	1,800 V
Voltage Protection Rating (VPR), L-N	800 V	800 V, 1,000 V	1,200 V	1,200 V, 1,800 V	1,200 V	1,500 V	–	800 V
Voltage Protection Rating (VPR), N-G	800 V	800 V, 800 V	1,200 V			1,500 V	–	800 V
Nominal Discharge Current (In), Per Mode	20 kA							
Max Discharge Current (Imax), Per Phase	360 kA 8/20 μ s							
Status Indication	2 Tri Color LEDs per phase, Audible Alarm with Silence Switch, Graphics-based LCD with Resettable Surge and TOV Counter with Time / Date Stamp							
Remote Contacts	Yes							
Remote Contact Switching Capacity	5.0 A @ 240 V							
Lead Size	#10–#4							
Temperature	–31 to 167°F							
Mounting	Flange Mount							
Enclosure Rating	NEMA 4, UL 50E Type 4							
Enclosure Material	Metal							
Depth	13.19 in min							
Width	7.23 in min							
Height	16.79 in min							
Unit Weight	18.2 lb min							
Impulse Life	10,000 Impulses at 10 kA 8/20 μ s							
Complies With	ANSI®/IEEE® C62.41.2-2002 Cat A, Cat B, Cat C ANSI®/IEEE® C62.41.1-2002 Cat A, Cat B, Cat C ANSI®/IEEE® C62.45-2002 Cat A, Cat B, Cat C UL® 96A and NEC® Article 285							
Certification Details	CSA C22.2 No. 269.1, UL® 1449 Edition 5 Type 2, 20 kA Mode, UL® 1283 Edition 7							

Service Entrance Suppressor(DB), 480 kA



FEATURES

- Front-facing design simplifies installation and performance monitoring
- 480 kA 8/20 μ s maximum surge rating per phase
- Advanced monitoring includes Surge and TOV Counters with time and date stamping
- Rotatable, full color graphics-based LCD utilizing a PIC Micro Controller
- Repetitive impulse tested to 10,000 strikes per mode
- Rotary Disconnect included, standard for safe servicing
- 10-year limited warranty



Part Number	SES480DB 600D	SES480DB 240480S	SES480DB 480Y	SES480DB 600Y	SES480DB 240480D	SES480DB 208Y	SES480DB 480D
Nominal System Voltage (Un)	600 V	240/480 V	277/480 V	347/600 V	–	120/208 V	480 V
Max Continuous Operating Voltage (Uc)	680 V	320/550 V	320/700 V	420/880 V	320/550V	150/300 V	550 V
Distribution System	3Ph Δ 3W+G	1Ph 3W+G	3Ph Y 4W+G		3Ph Δ 4W+G	3Ph Y 4W+G	3Ph Δ 3W+G
Frequency	0–600 Hz						
Short Circuit Current Rating (SCCR)	200 kA						
Voltage Protection Rating (VPR), L-G	2000 V	1,200 V		1,500 V	1,800 V, 1,800 V	800 V	1,800 V
Voltage Protection Rating (VPR), L-L	1800 V	2,500 V	2,000 V	2,500 V	2,000 V, 2,500 V	1,000 V	1,800 V
Voltage Protection Rating (VPR), L-N	–	1,200 V		1,500 V	1,200 V, 1,800 V	800 V	–
Voltage Protection Rating (VPR), N-G	–	1,200 V		1,500 V	1,200 V	800 V	–
Nominal Discharge Current (In), Per Mode	20 kA						
Max Discharge Current (Imax), Per Phase	480 kA 8/20 μ s						
Status Indication	2 Tri Color LEDs per phase, Audible alarm with Silence Switch, Graphics-based LCD with Resettable Surge and TOV Counter with Time/Date Stamp						
Remote Contacts	Yes						
Remote Contact Switching Capacity	5.0 A @ 240 V						
Lead Size	#10–#4						
Temperature	–31 to 167°F						
Mounting	Flange Mount						
Enclosure Rating	NEMA 4, UL 50E Type 4						
Enclosure Material	Metal						
Depth	13.19 in						
Width	7.23 in						
Height	16.79 in						
Unit Weight	18.2 lb						
Impulse Life	10,000 Impulses at 10 kA 8/20 μ s						
Complies With	ANSI®/IEEE® C62.41.2-2002 Cat A, Cat B, Cat C ANSI®/IEEE® C62.41.1-2002 Cat A, Cat B, Cat C ANSI®/IEEE® C62.45-2002 Cat A, Cat B, Cat C UL® 96A and NEC® Article 285						
Certification Details	CSA C22.2 No. 269.1, UL® 1449 Edition 5 Type 1/2, 20 kA Mode						

Service Entrance Suppressor(DF), 480 kA



FEATURES

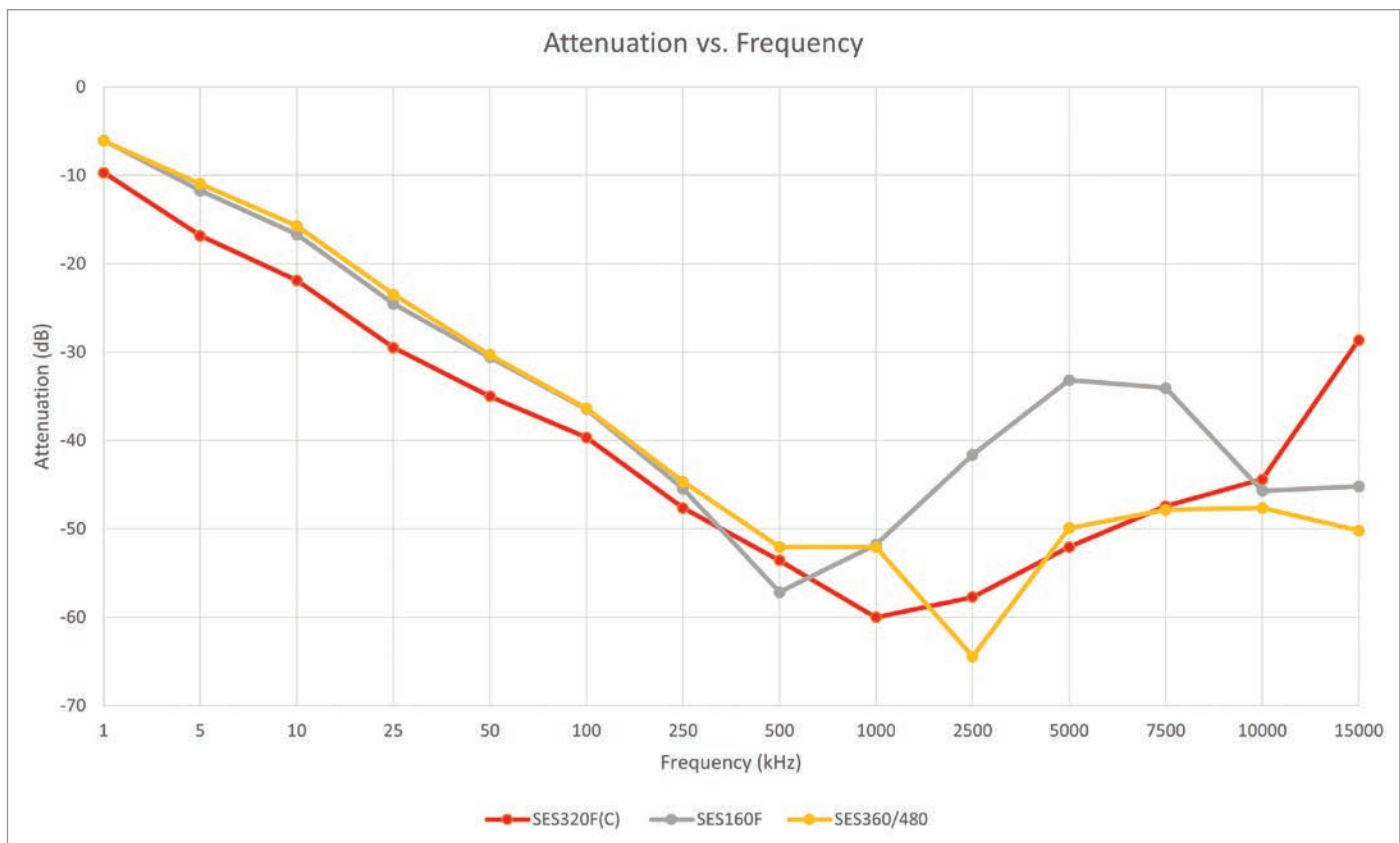
- Front-facing design eases installation and performance monitoring
- 480 kA 8/20 μ s maximum surge rating per phase
- Up to 64 dB attenuation (10 kHz to 100 MHz)
- Advanced monitoring includes Surge and TOV Counters with time and date stamping
- Rotatable, full color graphics-based LCD utilizing a PIC Micro Controller
- Repetitive impulse tested to 10,000 strikes per mode
- Rotary Disconnect included, standard for safe servicing
- 10-year limited warranty

Part Number	SES480DF 600D	SES480DF 240480S	SES480DF 240480D	SES480DF 208Y	SES480DF 480Y	SES480DF 600Y	SES480DF 480D
Nominal System Voltage (Un)	600 V	240/480 V	480 V	120/208 V	277/480 V	347/600 V	480 V
Max Continuous Operating Voltage (Uc)	680 V	320/550 V	350/550 V	150/300 V	320/700 V	420/880 V	550 V
Distribution System	3Ph Δ 3W+G	1Ph 3W+G	3Ph Δ 4W+G	3Ph Y 4W+G			3Ph Δ 3W+G
Frequency	0–600 Hz						
Filtering	–64 dB from 10 kHz to 100 MHz dB						
Short Circuit Current Rating (SCCR)	200 kA						
Voltage Protection Rating (VPR), L-G	2,000 V	1,200 V	1,800 V, 1,800 V	800 V	1,200 V	1,500 V	1,800 V
Voltage Protection Rating (VPR), L-L	2,000 V	2,000 V	2,000 V, 2,500 V	1,000 V	2,000 V	2,500 V	1,800 V
Voltage Protection Rating (VPR), L-N	–	1,200 V	1,200 V, 1,800 V	800 V	1,200 V	1,500 V	–
Voltage Protection Rating (VPR), N-G	–	1,200 V	1,200 V	800 V	1,200 V	1,500 V	–
Nominal Discharge Current (In), Per Mode	20 kA						
Max Discharge Current (Imax), Per Phase	480 kA 8/20 μ s						
Status Indication	2 Tri Color LEDs per phase, Audible alarm with Silence Switch, Graphics-based LCD with Resettable Surge and TOV Counter with Time/Date Stamp						
Remote Contacts	Yes						
Remote Contact Switching Capacity	5.0 A @ 240 V						
Lead Size	#10–#4						
Temperature	–31 to 167°F						
Mounting	Flange Mount						
Enclosure Rating	NEMA 4, UL 50E Type 4						
Enclosure Material	Metal						
Depth	13.19 in						
Width	7.23 in						
Height	16.79 in						
Unit Weight	18.2 lb						
Impulse Life	10,000 Impulses at 10 kA 8/20 μ s						
Complies With	ANSI®/IEEE® C62.41.2-2002 Cat A, Cat B, Cat C ANSI®/IEEE® C62.41.1-2002 Cat A, Cat B, Cat C ANSI®/IEEE® C62.45-2002 Cat A, Cat B, Cat C UL® 96A and NEC® Article 285						
Certification Details	CSA C22.2 No. 269.1, UL® 1449 Edition 5 Type 2, 20 kA Mode, UL® 1283 Edition 7						

Filter Model Chart

nVent ERICO product development creates innovative products backed with 100 years of industry experience.

Our products go through rigorous testing and research to validate they are ready to protect your facility.

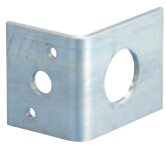


In this test (MIL-STD 220A), the filter is effective at reducing the amplitude of AC voltage signals, especially as a frequency of 500 kHz is approached. Attenuation across a range of frequencies appears to be consistent within the voltage range tested. Frequencies greater than 15 MHz resulted in the sinusoidal signal becoming distorted beyond recognition and the Vpp unable to be measured.

Accessories



SES40 Accessories



SES40BRK

Mounting L-Bracket for SES40 Series



SES40FP

SES40 flush plate kit for mounting behind drywall

SES40P Accessories



SES40PBRK

Mounting L-Bracket for SES40P Series



SES40PFP

SES40P flush plate kit for mounting behind drywall

SES160 Accessories



SES160BFP

SES160B flush plate kit for mounting behind drywall



SES160FFP

SES160F flush plate kit for mounting behind drywall



SES160LBRACKET

Mounting L-Bracket for SES160 B & F Series

SES320 Accessories



SES320FP

SES320 Series flush plate kit for mounting behind drywall



SES320MT

The nVent ERICO SES Mounting Bracket is an accessory for SES surge products designed to deliver a secure solution for wall installations.





nVent.com



Our powerful portfolio of brands:

CADDY ERICO HOFFMAN ILSCO RAYCHEM SCHROFF