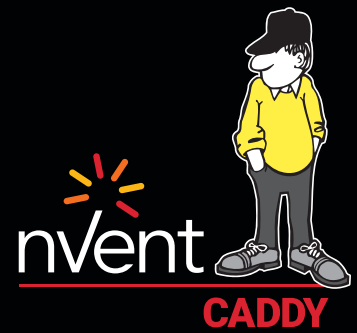
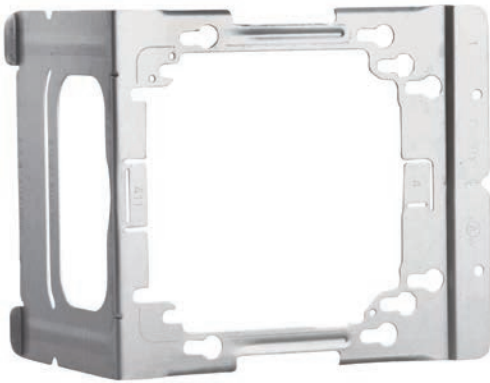


# C Series Electrical Box Bracket to Stud

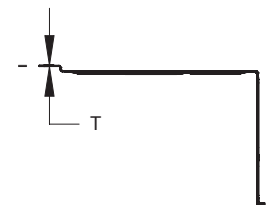
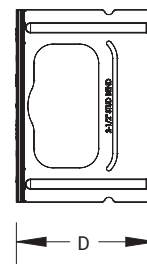
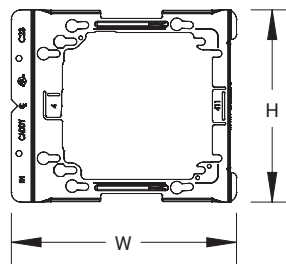


CONNECT AND PROTECT



## FEATURES

- Improved keyhole pattern to make mounting of 4 11/16" boxes easier
- Box lock tab secures box to bracket during assembly and allows mud ring to be removed following installation on the stud, providing easy frontal access to the inside of the box
- Designed with thicker steel to significantly increase rigidity and help prevent box movement and trim out issues
- Unique "step in" feature at the top and bottom of the bracket to easily access the fitting's set screw
- Works with both standard and adjustable single and double gang mud rings
- Mounts mud rings for low voltage applications
- Visible reference location lines help position mud rings for low voltage applications
- Additional bend points on C4 and C6 brackets for greater versatility



Material: Steel  
Finish: Pregalvanized



Part Number	Stud Wall Depth	Box Size	Depth D	Height H	Width W	Thickness T
C23	2 1/2", 3 5/8"	4", 4 11/16"	3.51"	5"	5 3/4"	0.031"
C4	2 1/2", 3 5/8", 4"	4", 4 11/16"	3.89"	5"	5 3/4"	0.031"
C6	2 1/2", 3 5/8", 5 1/2", 6"	4", 4 11/16"	5.89"	5"	5 3/4"	0.031"



Our powerful portfolio of brands:

**CADDY ERICO HOFFMAN RAYCHEM SCHROFF TRACER**