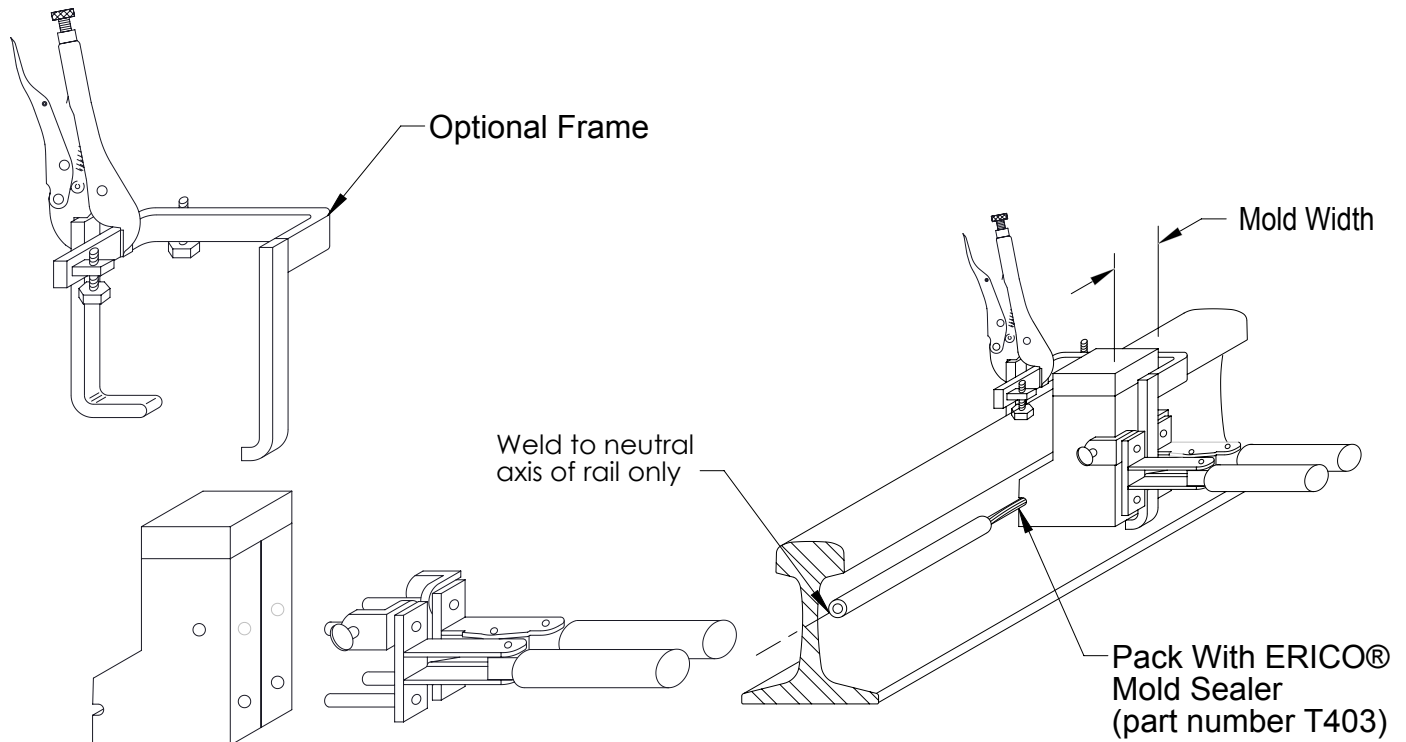


Type ST



Cable Stripping Chart

Mold Width	"X" Dim.	"Y" Dim.
3" [76.2 mm]	2" [50.8 mm]	1.5" [38.1 mm]
4" [101.6 mm]	3" [76.2 mm]	2" [50.8 mm]

Prior to making a connection, read and follow the full instruction sheets IPP, IPX, IPLRBR and special instructions below.

1. For better fit of mold to rail, rub mold along neutral axis of rail.
2. Strip insulation off cable "X" dimension (See table).
3. Mark cable "Y" dimension from end, place mold on cable and rail with mark even with side of mold. (See table).
4. Clamp mold to rail, adjust leveling screws as required.
5. Pack all openings around cable with ERICO® mold sealer (part number T403).

WARNING:

1. ERICO products shall be installed and used only as indicated in ERICO product instruction sheets and training materials. Instruction sheets are available at www.erico.com and from your ERICO customer service representative.
2. ERICO products must never be used for a purpose other than the purpose for which they were designed or in a manner that exceeds specified load ratings.
3. All instructions must be completely followed to ensure proper and safe installation and performance.
4. Improper installation, misuse, misapplication or other failure to completely follow ERICO's instructions and warnings may cause product malfunction, property damage, serious bodily injury and death.

SAFETY INSTRUCTIONS:

All governing codes and regulations and those required by the job site must be observed. Always use appropriate safety equipment such as eye protection, hard hat, and gloves as appropriate to the application.

CADDY, CADWELD, CRITEC, ERICO, ERIFLEX, ERITECH, and LENTON are registered trademarks of ERICO International Corporation.