

Stamped Bonding Lugs

EL6CS - Standard Tin-plated Bronze Version with #10 Hardware

EL6CSDB - Direct Burial Tin-plated Bronze Version with #10 Hardware

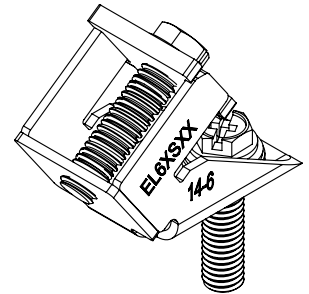
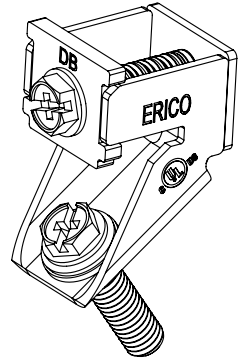
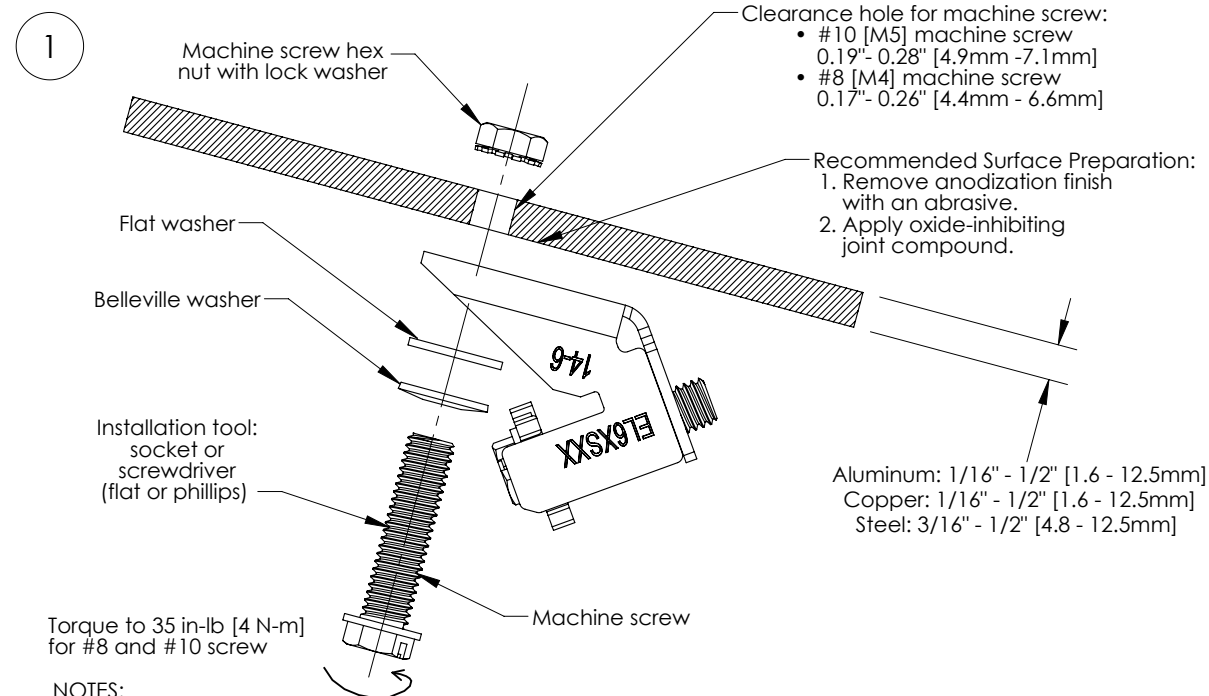
EL6CS8 - Standard Tin-plated Bronze Version with #8 Hardware

EL6CSDB8 - Direct Burial Tin-plated Bronze Version with #8 Hardware

EL6CSNH - Standard Tin-plated Bronze Version without Hardware

EL6CSDBNH - Direct Burial Tin-plated Bronze Version without Hardware

For 14-6 AWG [1.5 - 16mm²] Solid & Stranded Copper Conductor



NOTES:

- The lug should be installed so that surface contact is maintained for a minimum distance of 0.75 in [19mm] from the edge near the mounting screw. This corresponds to a minimum surface contact area of 0.44 in² [284mm²]
- If available, install the lug at the pre-drilled hole provided on the PV module or framing system. The hole will be identified by a marked "G", "GR", "GROUND", "GROUNDING", or the like.
- If no hole is provided, or if the provided hole is not to the recommended diameter, one may be drilled for installation. The hole shall be drilled using a depth restrictor to help prevent damage to the PV modules. A depth restrictor is not required when drilling on the side of the module, provided the drill path is clear of objects that could be damaged upon penetration of the metal.
- After drilling, use an appropriate tool to remove all burrs before installing the lug.
- For no hardware version, use #8 or #10 screw.
- EL6CS, EL6CSDB, EL6CS8 and EL6CSDB8 are UL® Listed to UL2703 for use with 125A maximum overcurrent protection.
- Sizing of an Equipment Grounding Conductor (EGC) and rating of the Overcurrent Protection Device in circuit ahead of the equipment shall not exceed the values in NEC® Table 250.122, where the EGC is only required to be larger than the circuit conductors supplying the equipment.
- For use with a Grounding Electrode Conductor, the size of the conductor shall comply with NEC 250.66 for AC systems and 250.166 for DC systems.

WARNING:

1. Pentair products shall be installed and used only as indicated in Pentair product instruction sheets and training materials. Instruction sheets are available at www.ericopentair.com and from your Pentair customer service representative.
2. Pentair products must never be used for a purpose other than the purpose for which they were designed or in a manner that exceeds specified load ratings.
3. All instructions must be completely followed to ensure proper and safe installation and performance.
4. Improper installation, misuse, misapplication or other failure to completely follow Pentair's instructions and warnings may cause product malfunction, property damage, serious bodily injury and/or death, and void your warranty.

SAFETY INSTRUCTIONS:

All governing codes and regulations and those required by the job site must be observed. Always use appropriate safety equipment such as eye protection, hard hat, and gloves as appropriate to the application.

NEC is a registered trademark of, and National Electrical Code (NEC) standard is a copyright of the National Fire Protection Association, Inc. UL is a registered trademark of UL LLC

Pentair, CADDY, ERICO CADWELD, ERICO CRITEC, ERICO, ERIFLEX, and LENTON are owned by Pentair or its global affiliates. All other trademarks are the property of their respective owners. Pentair reserves the right to change specifications without prior notice.

Stamped Bonding Lugs

EL6CS - Standard Tin-plated Bronze Version with #10 Hardware

EL6CSDB - Direct Burial Tin-plated Bronze Version with #10 Hardware

EL6CS8 - Standard Tin-plated Bronze Version with #8 Hardware

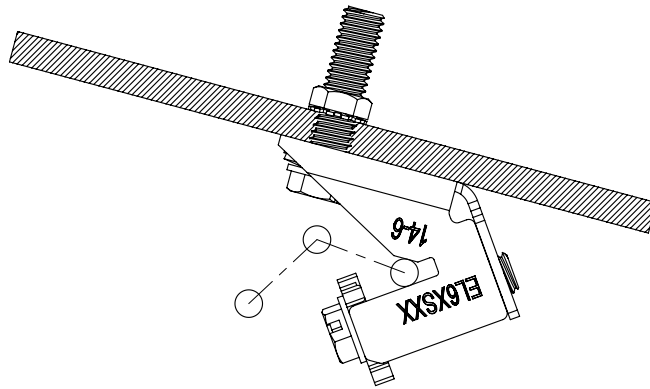
EL6CSDB8 - Direct Burial Tin-plated Bronze Version with #8 Hardware

EL6CSNH - Standard Tin-plated Bronze Version without Hardware

EL6CSDBNH - Direct Burial Tin-plated Bronze Version without Hardware

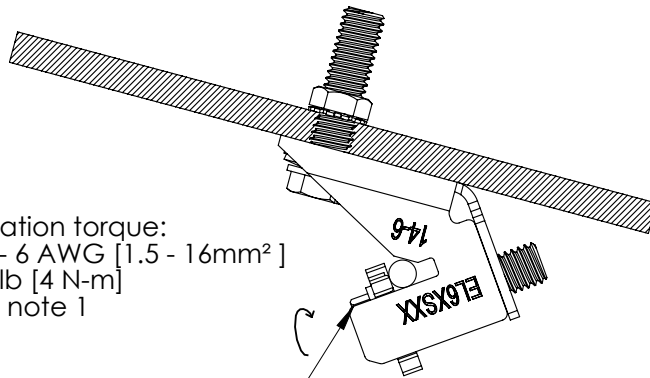
For 14-6 AWG [1.5 - 16mm²] Solid & Stranded Copper Conductor

2



UL® Listed — 14 AWG Copper solid & stranded [1.5mm²]
through
6 AWG Copper solid & stranded [16mm²]

3



Wire installation torque:
Torque value for 14 - 6 AWG [1.5 - 16mm²]
is 35 in-lb [4 N-m]
*see note 1

Installation tool:
socket or
screwdriver
(flat or phillips)

Note:

1. Torque value for 14 AWG stranded [1.5 - 2.5mm²] is 15 in-lb [1.7 N-m]

Pentair, CADDY, ERICO CADWELD, ERICO CRITEC, ERICO, ERIFLEX, and LENTON are owned by Pentair or its global affiliates. All other trademarks are the property of their respective owners. Pentair reserves the right to change specifications without prior notice.