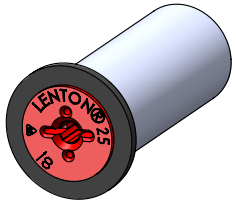
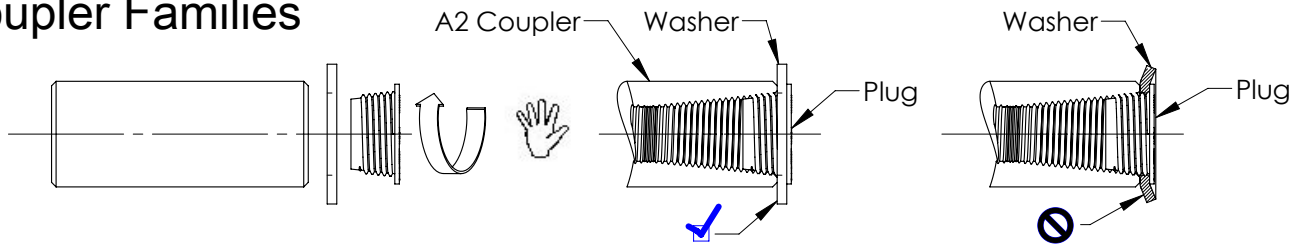
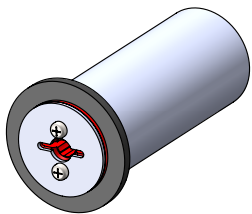
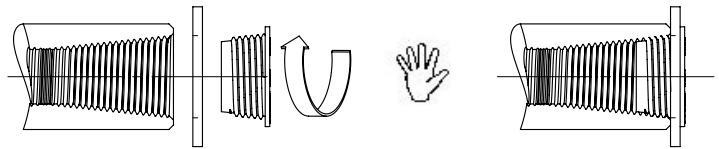


LENTON® FORM SAVER Accessories

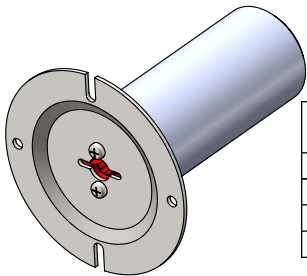
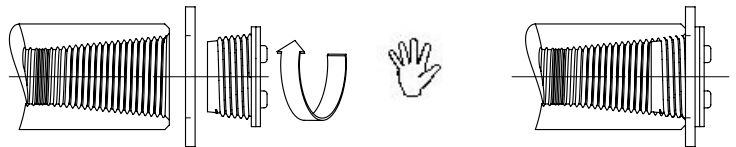
A2 Coupler Families



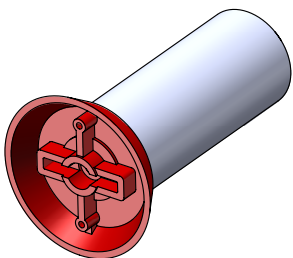
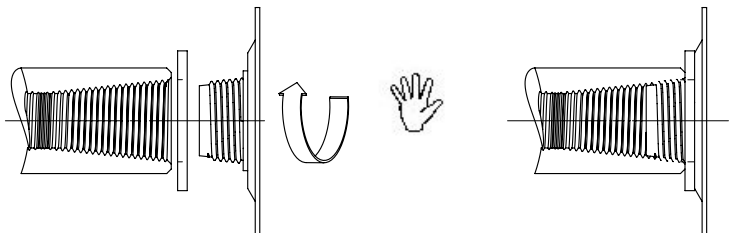
Part Number	Plug Color	Bar Designation		
		In-lb	Metric	Canada
EL12CPPW	RED	#4	12	10M
EL16CPPW	BLACK	#5	16	15M
EL20CPPW	YELLOW	#6	20	20M
EL22CPPW	BLUE	#7	22	---
EL25CPPW	RED	#8	25	25M
EL28CPPW	BLACK	#9	28	30M
EL32CPPW	YELLOW	#10	32	---



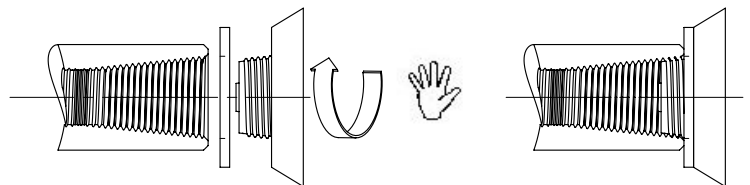
Part Number	Plug Color	Bar Designation		
		In-lb	Metric	Canada
EL12CPPSW	RED	#4	12	10M
EL16CPPSW	BLACK	#5	16	15M
EL20CPPSW	YELLOW	#6	20	20M
EL22CPPSW	BLUE	#7	22	---
EL25CPPSW	RED	#8	25	25M
EL28CPPSW	BLACK	#9	28	30M
EL32CPPSW	YELLOW	#10	32	---



Part Number	Plug Color	Bar Designation		
		In-lb	Metric	Canada
EL22CFFW	BLUE	#7	22	---
EL25CFFW	RED	#8	25	25M
EL28CFFW	BLACK	#9	28	30M
EL32CFFW	YELLOW	#10	32	---



Part Number	Plug Color	Bar Designation		
		In-lb	Metric	Canada
EL12CFFPW	RED	#4	12	10M
EL16CFFPW	BLACK	#5	16	15M
EL20CFFPW	YELLOW	#6	20	20M
EL25CFFPW	RED	#8	25	25M
EL28CFFPW	BLACK	#9	28	30M



WARNING:

1. ERICO products shall be installed and used only as indicated in ERICO product instruction sheets and training materials. Instruction sheets are available at www.erico.com and from your ERICO customer service representative.
2. ERICO products must never be used for a purpose other than the purpose for which they were designed or in a manner that exceeds specified load ratings.
3. All instructions must be completely followed to ensure proper and safe installation and performance.
4. Improper installation, misuse, misapplication or other failure to completely follow ERICO's instructions and warnings may cause product malfunction, property damage, serious bodily injury and death.

The customer is responsible for:

- a. Conformance to all governing codes.
- b. The integrity of structures to which the products are attached, including their capability of safely accepting the loads imposed, as evaluated by a qualified engineer.
- c. Using appropriate industry standard hardware as noted above.

SAFETY INSTRUCTIONS:

All governing codes and regulations and those required by the job site must be observed. Always use appropriate safety equipment such as eye protection, hard hat, and gloves as appropriate to the application.