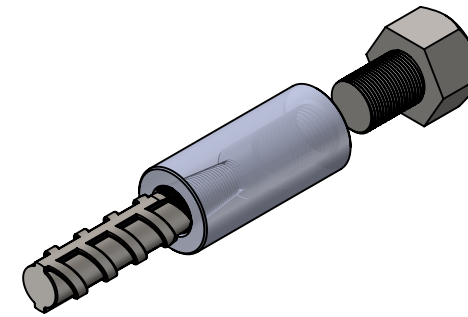
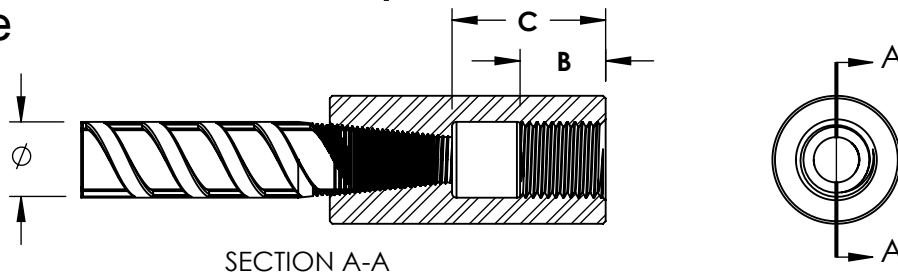


# LENTON® Bolt Coupler S13

## Europe



ERICO Article Number	Ø			LENTON Taper Thread		B Coupler Straight Thread Length Engagement	C Max Allowable Thread Length Within Coupler	Metric Straight Thread Size**
	In.-lb.	Metric	Canada	Nm	ft.-lb.			
150720	#3	10	—	40	30	1.34 [34.0]	1.69 [43.0]	M12 X 1.75-6H
150730	#4	12	10M	40	30	1.73 [44.0]	2.17 [55.0]	M16 X 2-6H
150740	-	14	—	120	90	1.89 [48.0]	2.36 [60.0]	M18 X 2.5-6H
150750	#5	16	15M	120	90	2.05 [52.0]	2.56 [65.0]	M20 X 2.5-6H
150760	-	18	—	120	90	1.14 [29.0]	2.40 [61.0]	M22 X 2.5-6H
150770	#6	20	20M	180	130	1.22 [31.0]	2.83 [72.0]	M24 X 3-6H
150780	#7	22	—	220	160	1.38 [35.0]	3.39 [86.0]	M27 X 3-6H
150790	#8	25	25M	270	200	1.50 [38.0]	3.50 [89.0]	M30 X 3.5-6H
150800	#9	28	30M	270	200	1.65 [42.0]	4.09 [104.0]	M33 X 3.5-6H
150810	-	30	—	300	200*	1.81 [46.0]	4.25 [108.0]	M36 X 4-6H
150820	#10	32	—	300	200*	1.93 [49.0]	4.76 [121.0]	M39 X 4-6H
150830	-	34	—	300	200*	1.93 [49.0]	4.76 [121.0]	M39 X 4-6H
150840	#11	36	35M	300	200*	2.09 [53.0]	4.92 [125.0]	M42 X 4.5-6H
150850	#12	38	—	350	200*	2.20 [56.0]	4.84 [123.0]	M45 X 4.5-6H
150860	-	40	—	350	200*	2.20 [56.0]	4.84 [123.0]	M45 X 4.5-6H
150870	#14	43	45M	350	200*	2.56 [65.0]	5.00 [127.0]	M52 X 5-6H
150880	-	50	—	350	200*	2.76 [70.0]	5.20 [132.0]	M56 X 5.5-6H
150890	#18	57	55M	350	200*	3.11 [79.0]	5.55 [141.0]	M64 X 6-6H

Metric and imperial table values are not a direct conversion.

\* Americas Only

\*\* The integrity, torque, and proper installation criteria of the straight threaded connection shall be evaluated by a qualified engineer.

**WARNING:**

1. ERICO products shall be installed and used only as indicated in ERICO product instruction sheets and training materials. Instruction sheets are available at [www.erico.com](http://www.erico.com) and from your ERICO customer service representative.
2. ERICO products must never be used for a purpose other than the purpose for which they were designed or in a manner that exceeds specified load ratings.
3. All instructions must be completely followed to ensure proper and safe installation and performance.
4. Improper installation, misuse, misapplication or other failure to completely follow ERICO's instructions and warnings may cause product malfunction, property damage, serious bodily injury and death.

The customer is responsible for:

- a. Conformance to all governing codes.
- b. The integrity of structures to which the products are attached, including their capability of safely accepting the loads imposed, as evaluated by a qualified engineer.
- c. Using appropriate industry standard hardware as noted above.

**SAFETY INSTRUCTIONS:**

All governing codes and regulations and those required by the job site must be observed. Always use appropriate safety equipment such as eye protection, hard hat, and gloves as appropriate to the application.

CADDY, CADWELD, CRITEC, ERICO, ERIFLEX, ERITECH, and LENTON are registered trademarks of ERICO International Corporation.

