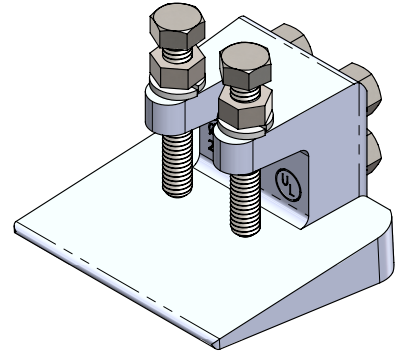


# TFC2L

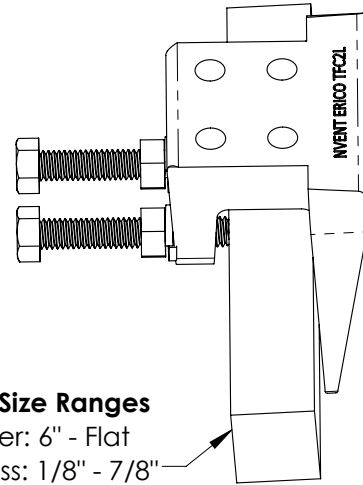
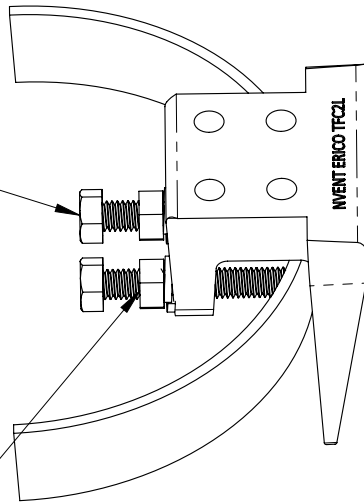
## Flange Clamp for Telecom Towers

The TFC2L grounding clamp is designed to provide a grounding connection point to tower and rooftop mounted telecommunication equipment and antennas. The TFC2L can provide a grounding connection to both curved or flat tower flanges.



Tighten 2" long 5/16" UNC bolts to flange. Torque to 150 in-lbs.

Tighten nut and lock washer securely to the top of the clamp body to lock the bolt in place. Torque to 150 in-lbs.



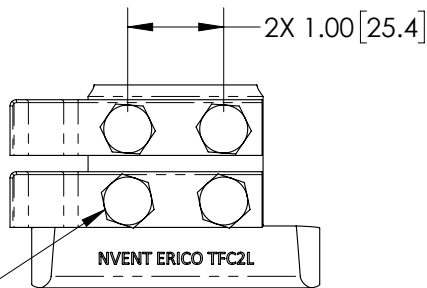
### Flange Size Ranges

Diameter: 6" - Flat

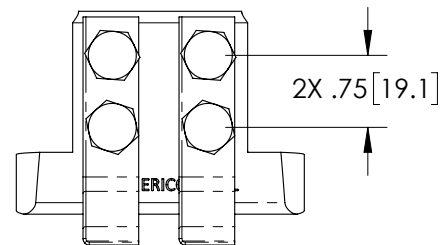
Thickness: 1/8" - 7/8"

Once the TFC2L is secure, the electrical connection can be made. The TFC2L is equipped with 2 double-hole pairs for termination of double hole grounding lugs with 2 AWG conductor.

Attach lug to clamp body with included 5/16" UNF bolts and lock washers. Lubricate bolt to prevent galling, and torque to 150 in-lbs.



TFC2L with (2) 1" hole space lugs



TFC2L with (2) 3/4" hole space lugs

#### WARNING:

1. nVent products shall be installed and used only as indicated in nVent product instruction sheets and training materials. Instruction sheets are available at [www.nVent.com](http://www.nVent.com) and from your nVent customer service representative.
2. nVent products must never be used for a purpose other than the purpose for which they were designed or in a manner that exceeds specified load ratings.
3. All instructions must be completely followed to ensure proper and safe installation and performance.
4. Improper installation, misuse, misapplication or other failure to completely follow nVent's instructions and warnings may cause product malfunction, property damage, serious bodily injury and/or death, and void your warranty.

#### SAFETY INSTRUCTIONS:

All governing codes and regulations and those required by the job site must be observed. Always use appropriate safety equipment such as eye protection, hard hat, and gloves as appropriate to the application.

nVent, nVent CADDY, nVent ERICO Cadweld, nVent ERICO Critec, nVent ERICO, nVent ERIFLEX, and nVent LENTON are owned by nVent or its global affiliates. All other trademarks are the property of their respective owners. nVent reserves the right to change specifications without prior notice.