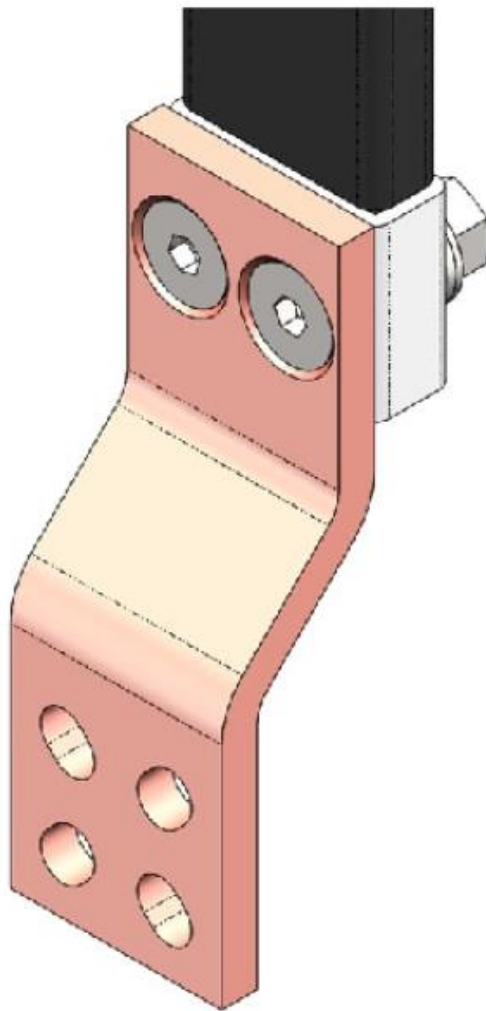


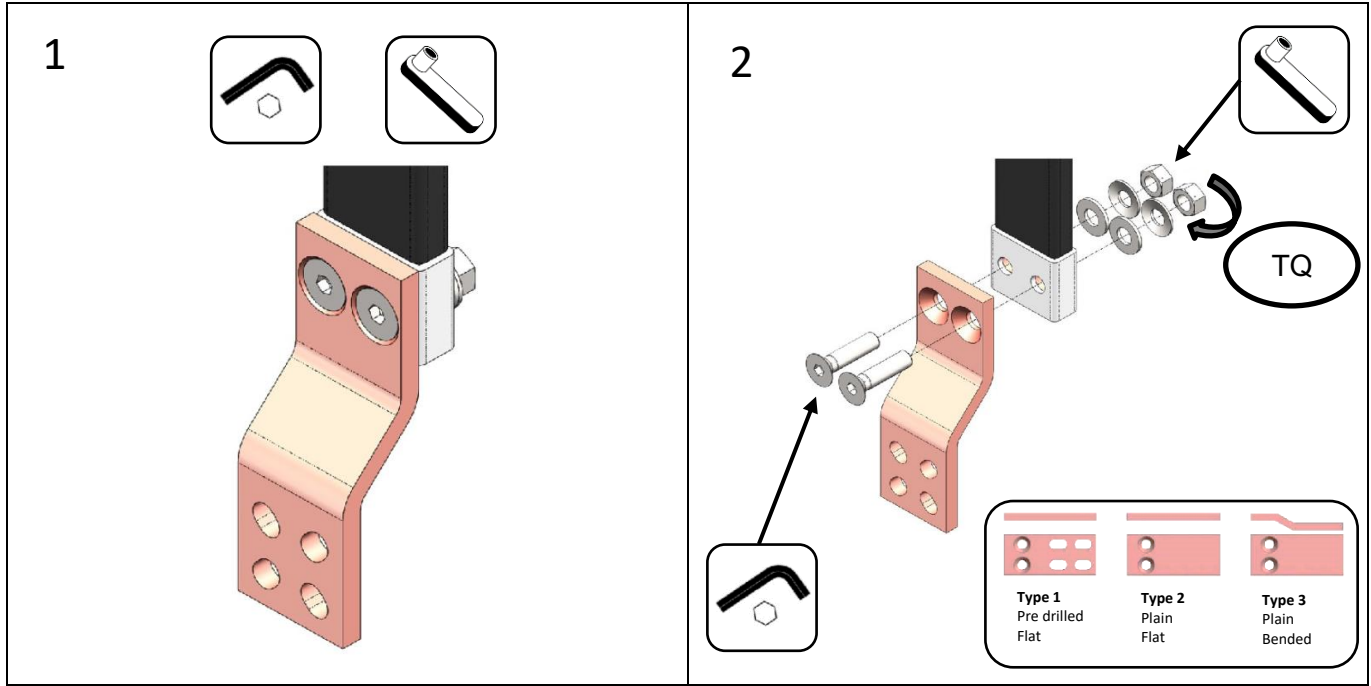
# nVent ERIFLEX FLEXBUS ADVANCED EXTENDER

Instruction Sheet





# INSTRUCTION SHEET

## nVent ERIFLEX FLEXBUS ADVANCED EXTENDERS TERMINAL EXTENDER FOR BUSBAR CONNECTION



**3**

Part Number	Global Part Number	Description	Bolt Size	QTY			TQ
508110	FLEXEXT55A1	FLEXBUS Extender 50x10 for conductor 220,360 and 545mm <sup>2</sup> Type 1	M10	2	6mm	17mm	60Nm 44 lbft
508111	FLEXEXT55A2	FLEXBUS Extender 50x10 for conductor 220,360 and 545mm <sup>2</sup> Type 2					
508112	FLEXEXT55A3	FLEXBUS Extender 50x10 for conductor 220,360 and 545mm <sup>2</sup> Type 3					
508113	FLEXEXT55B1	FLEXBUS Extender 50x10 for conductor 640mm <sup>2</sup> Type 1	M10	4	6mm	17mm	60Nm 44 lbft
508114	FLEXEXT55B2	FLEXBUS Extender 50x10 for conductor 640mm <sup>2</sup> Type 2					
508115	FLEXEXT55B3	FLEXBUS Extender 50x10 for conductor 640mm <sup>2</sup> Type 3					
508116	FLEXEXT1001	FLEXBUS Extender 100x10 for conductor 800, 960, 1280 and 1810 mm <sup>2</sup> Type 1	M12	4	6mm	19mm	110Nm 81 lbft
508117	FLEXEXT1002	FLEXBUS Extender 100x10 for conductor 800, 960, 1280 and 1810 mm <sup>2</sup> Type 2					
508118	FLEXEXT1003	FLEXBUS Extender 100x10 for conductor 800, 960, 1280 and 1810 mm <sup>2</sup> Type 3					

# INSTRUCTION SHEET

## Extender : Type 1 mounting on punched busbars

DPCB Double Punched Copper Busbar					
Cross section 50x10 or 50x5					6 bolts min
Cross section 60x10					6 bolts min
Cross section 63x5					6 bolts min
Cross section 80x10 or 80x5					6 bolts min
Cross section 100x10 or 100x5					6 bolts min

Extender type 1 (Pre drilled & flat) – Mounting on punched busbar			
Part Number	508110	508113	508116
Description	FLEXBUS Extender 50x10 for conductor 220,360 and 545mm <sup>2</sup> Type 1	FLEXBUS Extender 50x10 for conductor 640mm <sup>2</sup> Type 1	FLEXBUS Extender 100x10 for conductor 800, 960, 1280 and 1810 mm <sup>2</sup> Type 1
Extender type 1 overview			

**WARNING:**

- nVent products shall be installed and used only as indicated in nVent product instruction sheets and training materials. Instruction sheets are available at [www.nVent.com](http://www.nVent.com) and from your nVent customer service representative.
- nVent products must never be used for a purpose other than the purpose for which they were designed or in a manner that exceeds specified load ratings.
- All instructions must be completely followed to ensure proper and safe installation and performance.
- Improper installation, misuse, misapplication or other failure to completely follow nVent's instructions and warnings may cause product malfunction, property damage, serious bodily injury and/or death, and void your warranty.

**SAFETY INSTRUCTIONS:** All governing codes and regulations and those required by the job site must be observed. Always use appropriate safety equipment such as eye protection, hard hat, and gloves as appropriate to the application.



Our powerful portfolio of brands:

CADDY ERICO HOFFMAN ILSCO RAYCHEM SCHROFF