

Classification of reaction to fire based with EN 13501-1 : 2019-05

No. of Classification Report:

K-2300/378/17-MPA BS

Client:

*ERICO Europe BV
Jules Verneweg 75
5015 BG Tilburg
The Netherlands*

Issued by:

*Materialprüfanstalt für das Bauwesen
Beethovenstraße 52
38106 Braunschweig
Germany*

**Number of the notified testing
laboratory:**

0761-CPD

Product name:

*EPDM-SBR Rubber "MFDRBR..." and
"MFPRBR..." as a component of the
nVent CADDY MACROFIX Insulated
M8/M10 (MFD and MFDS6),
nVent CADDY MACROFIX Insulated
M8/M10 (MFP and MFPS6),
CADDY MACROFIX Insulated M8 (MFE)*

Issue number:

2 st issue

Issued on:

17/07/2020

Validity:

Not restricted

This Classification Report consists of 5 pages and 5 annexes.

This Classification Report may not be circulated unless as a complete text without any alterations. Excerpts and abridged versions of this document are subject to approval in writing of MPA Braunschweig. Translations of this document that are made without the approval of the Testing House must bear the note "translation of the German original not examined by the Materials Testing Institute" in Braunschweig. The first sheet of this document and the page carrying the signatures bear the official stamp of MPA Braunschweig. Documents that do not carry a signature and the official stamp are invalid.



1 Introduction

This Classification Report defines the classification that is assigned on the basis of the test method specified in DIN EN 13501-1 : 2019-05 to the construction products that are described below.

2 Details of the classified construction products

2.1 Type and field application

The tested products "MFDRBR..." and "MFPRBR..." made of EPDM-SBR Rubber are Inlays for pipe clamps for suspension of stationary non-insulated pipe lines*.

2.3 Description of the products

The tested products "MFDRBR..." and "MFPRBR..." are described in detail in the Test Report that is listed in section 3.1 below and on which this classification is based.

3 Test reports and test results for classification

3.1 Test Report

Name of testing laboratory	Client	Number of the Test Report	Test method / date
MPA Braunschweig	ERICO Europe BV Jules Verneweg 75 5015 BG Tilburg The Netherlands	2300/378/17-a of 23/10/2017	DIN EN ISO 11925-2 2011-02
		2301/817/2020-a of 01/07/2020	DIN EN ISO 11925-2 2011-02

3.2 Test results

3.2.1 Test results for the EPDM-SBR Rubber products "MFDRBR..." and "MFPRBR..."

Test method	Parameter	Number of tests	Test results	
			Continuous parameters (mean value)	Discrete parameters
EN ISO 11925-2				
Flames applied to surface 15 s	F _s ≤ 150 mm	20	-	Complied with
Burning droplets/falling burning particles	Ignition of the filter paper	20	-	Complied with
Flames applied to edge 15 s	F _s ≤ 150 mm	20	-	Complied with
Burning droplets/falling burning particles	Ignition of the filter paper	20	-	Complied with

4 Classification and field of direct application

4.1 Classification basis

This classification was made in compliance with DIN EN 13501-1 : 2019-05.

4.2 Classification

The following reaction-to-fire performance class is assigned to the tested products *EPDM-SBR Rubber "MFDRBR..." and "MFPRBR..."*.

E

The additional product classification regarding smoke production is:

No requirements

The additional classification of the product regarding burning droplets/falling burning particles is:

Complied with

The classification format for the reaction to fire of building products, except for flooring and pipe insulation, is as follows:

Reaction-to-fire		Smoke production				Burning droplets	
<i>E</i>	--	--	--	--	--	--	

The classification in accordance with DIN EN DIN EN 13501-1 : 2019-05, table 1, is:

Reaction-to-fire classification: E

4.3 Field of application and product parameters

4.3.1 Field of application and parameters of the "EPDM-SBR Rubber" products

The classification in section 4.2 for the product applies to the following product fields of application and/or product parameters:

- Product parameter

Product	Parameter	The classification applies to
Inlays	Type	<i>EPDM-SBR Rubber*</i>
	Density	<i>1,40 g/cm³ ± 5%</i>
	Colours	<i>Black and blue paint on two outside vertical flat surfaces</i>
	Global Part Number	<i>MFDRBR015*</i> <i>MFDRBR019*</i> <i>MFDRBR025*</i> <i>MFDRBR031*</i> <i>MFDRBR037*</i> <i>MFDRBR044*</i> <i>MFDRBR 050*</i> <i>MFDRBR 058*</i> <i>MFDRBR 068*</i> <i>MFPRBR078B*</i> <i>MFDRBR C78*</i> <i>MFPRBR088B*</i> <i>MFDRBR 088*</i> <i>MFPRBR 98B*</i> <i>MFDRBR 98*</i> <i>MFDRBR 108*</i> <i>MFPRBR 118B*</i> <i>MFDRBR 118*</i> <i>MFPRBR 128B*</i> <i>MFDRBR 128*</i> <i>MFPRBR 138B*</i> <i>MFDRBR 138*</i> (drawings see annexes 1-5)
Subsoil	Connection with other products	Only direct application on metal subsoil for the practical application with a melting point ≥ 1000°C, thickness ≥ 0,6 mm and density ≥ 5850 kg/m ³

- Field of application: use as Inlays for pipe clamps

5 Notes

- 5.1 In connection with additional flammable coatings or other weights per unit area than those specified in section 4.3 above, the reaction to a fire may be adversely affected so that the classification in section 4.2 will no longer apply. The reaction of fire of any additional flammable coatings or other weights per unit area must be demonstrated separately.
- 5.2 This Classification Report is not a type approval or product certification document, and it does not replace the approval that may be required under the German building law (State Government Building Regulations).
- 5.3 It was made no declaration by the client regarding the classification of his construction product in a system of the attestation of compliance procedure for CE marking within the framework of the Construction Products Regulation (BauPVO).
- 5.4 **This Classification Report written in English language is issued additionally to the report written in German language with the same report number. In case of doubt the German version is valid solely. This Classification Report is only valid in combination with the German version of the report.**

Signature

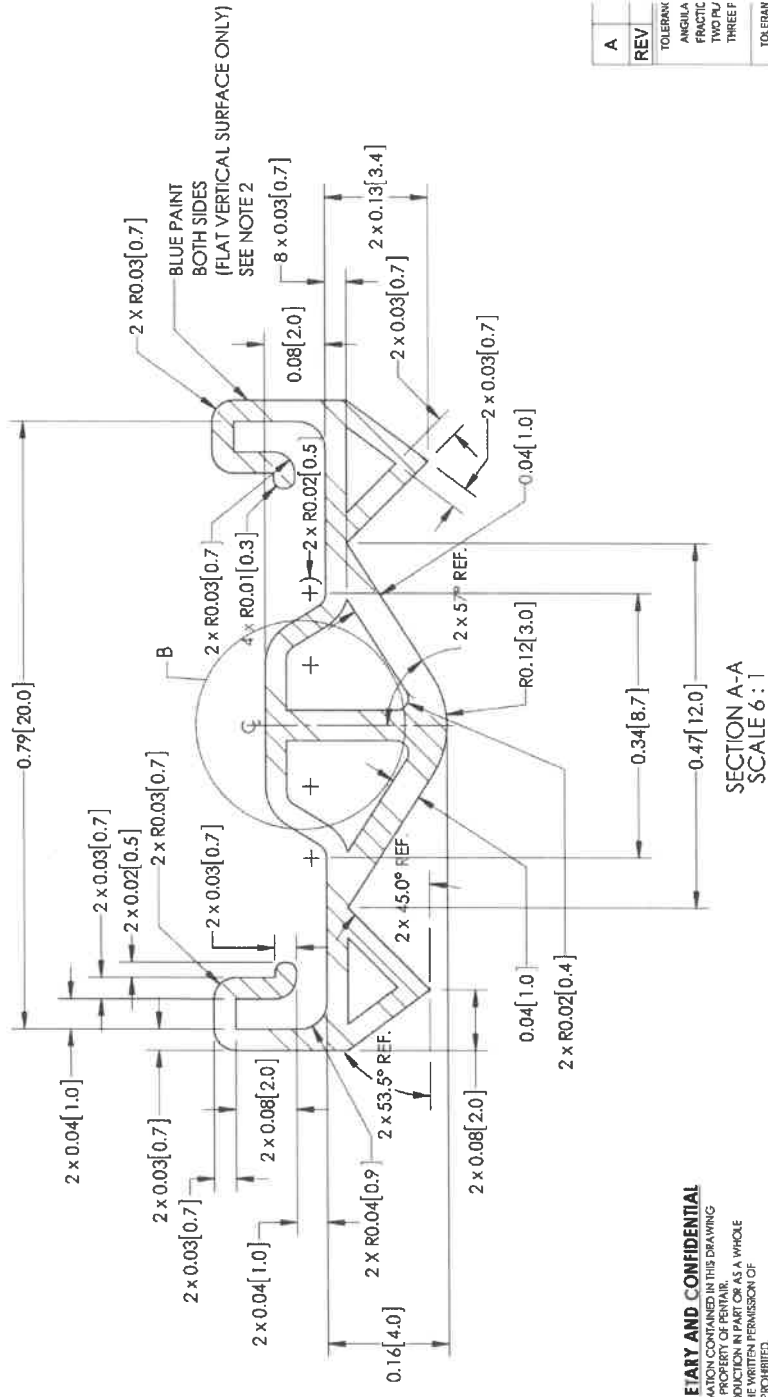
Tech.-Ang. Katharina Feustel-Präuse
Engineer / official in charge



Confirm

ORF. DI.-Ing. Gary Blume
Head of Testing Laboratory

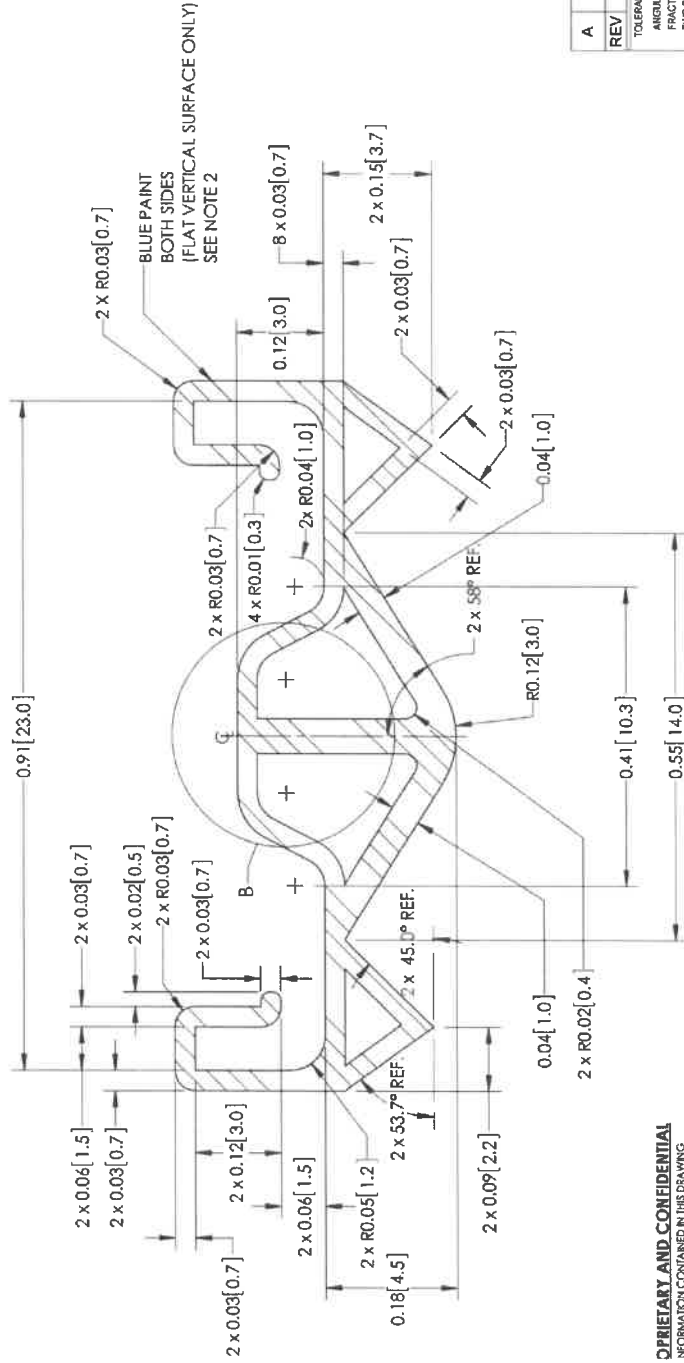
PART NO.	DESCRIPTION
MFDRBR015	RUBBER LINER FOR MFD015 MACROFIX I
MFDRBR019	RUBBER LINER FOR MFD019 MACROFIX I
MFDRBR025	RUBBER LINER FOR MFD025 MACROFIX I
MFDRBR031	RUBBER LINER FOR MFD031 MACROFIX I
MFDRBR037	RUBBER LINER FOR MFD037 MACROFIX I
MFDRBR044	RUBBER LINER FOR MFD044 MACROFIX I



A	REV	TOOLERANK
		ANGELA FRANCK THOMPSON THREE F
		TOOLERANK

EXTRAY AND CONFIDENTIAL
INFORMATION CONTAINED IN THIS DRAWING IS THE PROPERTY OF PENNAR. REPRODUCTION IN PART OR AS A WHOLE WITHOUT WRITTEN PERMISSION OF PENNAR IS PROHIBITED.

ITEM	PART NO.	QTY	DESCRIPTION
10	MFPRBR078B	X	RUBBER LINER FOR BOTTOM C-CLAMP OF MFP078 MACROFIX PLUS
11	MFDDBR078	X	RUBBER LINER FOR MFD078 MACROFIX I
12	MFPRBR088B	X	RUBBER LINER FOR BOTTOM C-CLAMP OF MFP088 MACROFIX PLUS
13	MFDDBR088	X	RUBBER LINER FOR MFD088 MACROFIX I

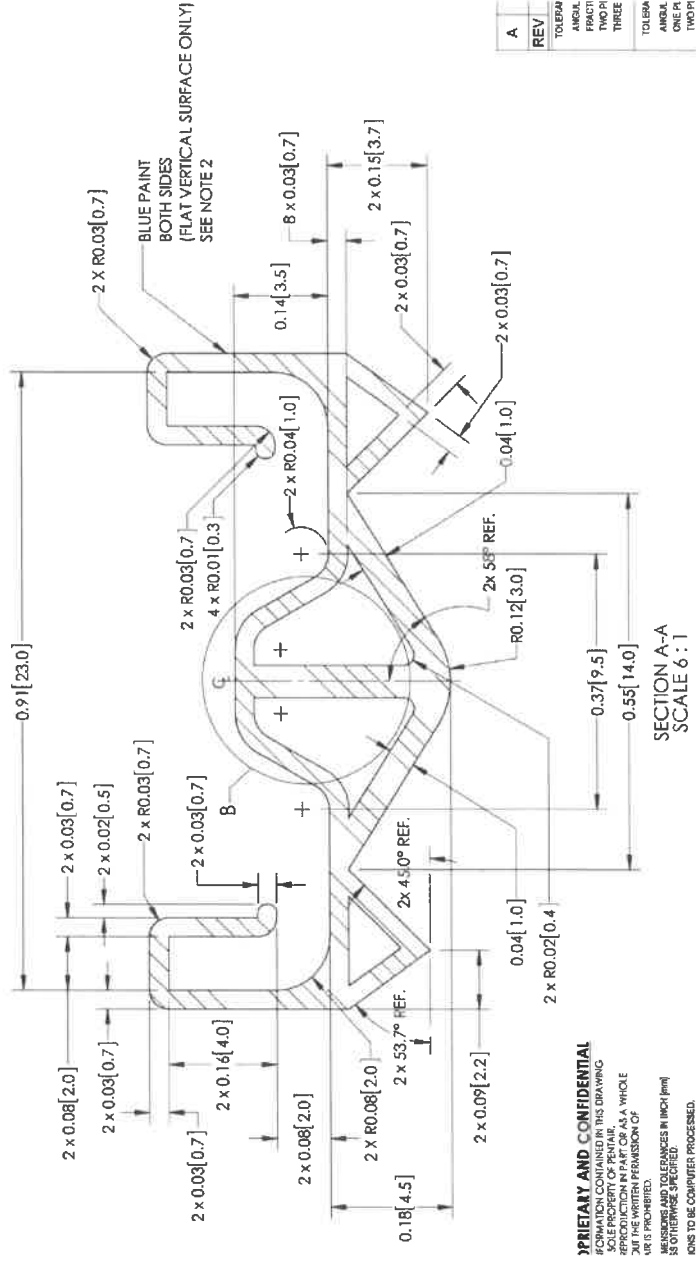


SECTION A-A
SCALE 6 : 1

REV	DESCRIPTION
A	REV
	TOLERANCE
	ANGULAR
	FRACTION
	TWO FLAT
	THREE PL
	TOLERANCE
	ANGULAR
	ONE PLAC

PROPRIETARY AND CONFIDENTIAL
THIS DRAWING IS THE PROPERTY OF IBMB
REPRODUCTION IN PART OR AS A WHOLE
WITHOUT THE WRITTEN PERMISSION OF
IBMB IS PROHIBITED.
DIMENSIONS AND TOLERANCES IN INCH [mm]
UNLESS OTHERWISE SPECIFIED.

ITEM	PART NO.	QTY	DESCRIPTION
20	MFPBR128B	X	RUBBER LINER FOR BOTTOM C-CLAMP OF MFP128 MACROFIX PLUS
21	MFD RBR128	X	RUBBER LINER FOR MFD128 MACROFIX I
22	MFPBR138B	X	RUBBER LINER FOR BOTTOM C-CLAMP OF MFP138 MACROFIX PLUS
23	MFD RBR138	X	RUBBER LINER FOR MFD138 MACROFIX I



PROPRIETARY AND CONFIDENTIAL
 INFORMATION CONTAINED IN THIS DRAWING IS THE PROPERTY OF MPA BRAUNSCHWEIG. REPRODUCTION IN PART OR AS A WHOLE WITHOUT THE WRITTEN PERMISSION OF MPA BRAUNSCHWEIG IS PROHIBITED.
 ALL DIMENSIONS AND TOLERANCES IN INCH (mm) UNLESS OTHERWISE SPECIFIED.
 DIMENSIONS TO BE COMPLETED BY THE USER.
 ANY CHANGES MUST BE APPROVED BY MPA BRAUNSCHWEIG.