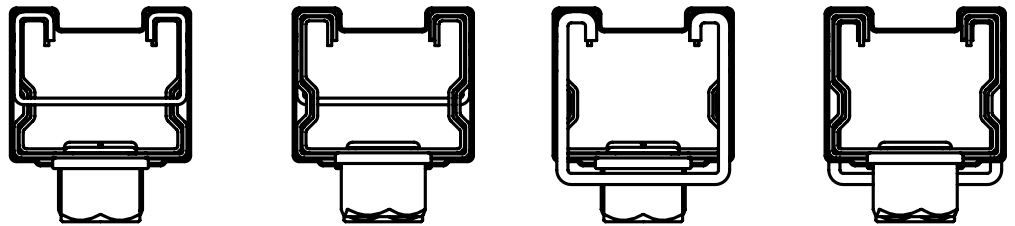


# YOUR NVENT CADDY TSR1220 QUESTIONS ANSWERED

## WILL ANY STRUT FITTING FIT INTO THE CHANNEL?

The nVent CADDY Telescoping Strut Replacement (TSR) is compatible with all common strut fittings with the exception of 1/2" strut nuts.



## CAN THE TSR SUPPORT GREATER THAN 2" PIPE OR CONDUIT?

The TSR is designed to support up to 2" pipe or conduit so larger diameters are not recommended. Larger diameters would need engineering approval and would be limited to a quantity of one pipe making it more practical to use individual loop hangers on a single threaded rod.

## CAN THE TSR BE INSTALLED UPSIDE DOWN OR OPEN SIDE DOWN?



[SNSW37](#)



For some variations, the TSR can be installed open-side down; others cannot.

- [TSR1220R](#) and [TSR1220N](#) can be installed in any orientation with nuts below to support the channel.
- [TSR1220](#) & [TSR122025](#) with rivet nuts can be installed channel down when used in combination with square washers and hex nuts or simply with [SNSW37](#) underneath to support the load. The load must not be supported by the rivet.
- [TSR122038RL](#) with [nVent CADDY Rod Lock](#) must not be installed channel down.


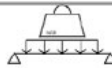
## DOES THE RETAINER STRAP HAVE TO BE USED?

Yes, the retainer strap is required to secure the bracket at the desired length. **Can the retainer strap be moved?** Because the bar has slots that guide the strap into place, the retainer strap functions most effectively in its original position. However, it can be moved within 1" of the original location in either direction.

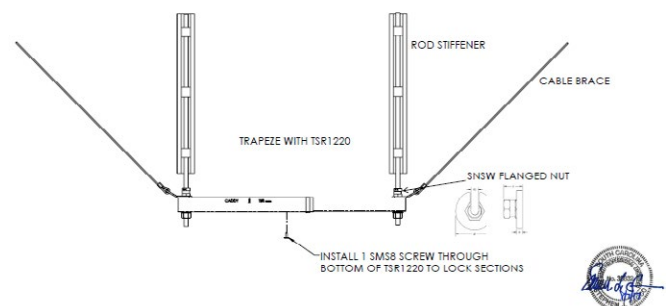
## IS TSR1220 STRONG ENOUGH FOR MY APPLICATIONS?

The TSR can be used in a wide range of applications, for up to 300 pounds of load. Additionally, the [TSR1220](#) used with one [SMS8](#) screw has been tested per FM1950 to establish the capacity to withstand side loading due to seismic compliance criteria. This is how strong the TSR1220 is!

TSR Load Table

Max Working Load		Range "L"	Lb
	Point Load	12-16in	300
		16-20in	200
	Distributed Load	12-20in	300

TSR1220 Set-up Tested per FM1950 with PE Stamp



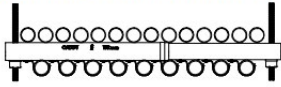
## IS TSR1220 LONG ENOUGH FOR MY APPLICATION?

Yes, the TSR telescopes from 12 to 20" (distance between the supports (threaded rods or wire)) which is more than enough for most light and medium-duty electrical and mechanical application.

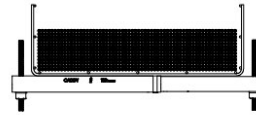
For example, this length allows contractors to support an 18" wide basket tray, up to 23x 1" EMT conduits (top + bottom – see below) or up to 6x 2" Sch 40 pipes.

### Examples of Typical\* Trapeze Loads

Any combination of Pipe, Conduit, and/or Cable Tray used within the load limits is permissible.



**Electrical Application**  
1" EMT Conduit Shown with 10' Support Spacing



**Cable Tray Application**  
6" x 18" Basket Tray and CAT6 Cable Shown with 7' Support Spacing (35lb Tray Weight)

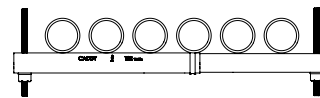
Size	Max Qty EMT	Max Qty Rigid
3/4"	35	20
1"	23	13
1 1/2"	14	9
1 1/2"	11	7
2"	7	5

Conduit plus weight of heaviest conductor combination as specified by the National Electric Code

Cable	Nominal Diameter	Weight per Length	Span	Max Qty	Notes
Cat 6A	.27-.35in	.029-.030 lb/ft	7' [2.1m]	536-913	Based on 50% Fill Rate Qty Depends on Cable and Tray Manufacturers
Cat 6	.23-.22in	.022-.024 lb/ft		1292-1357	
Cat 5e	.19-.21in	.019-.020 lb/ft		1413-1820	
12-3 MC	.50in	.13 lb/ft	4.9' [1.5m]	290	Based on weight
3x1.5mm <sup>2</sup>	11.5mm	190 kg/km		420	
1x50mm	16mm	960 kg/km		80	

Diameter	Span	Max Qty Sch 40
3/4"	7'	22
1"	7'	15
1 1/2"	9'	8
2"	10'	6

Based on weight of water filled schedule 40 pipe per ASTM A53  
ASTM standard A53, 2002, "Standard Specification for Pipe, Steel, Black and Hot-Dipped, Zinc-Coated, Welded and Seamless," ASTM International, West Conshohocken, PA, 2003



**Piping Application**  
2" Schedule 40 Shown with 10' Support Spacing

## IS TSR1220 MORE EXPENSIVE THAN STRUT?

Think about it, 5 minutes at an hourly wage of \$60 is worth \$5.00! How much time do you or your team spend preparing strut when you could be just installing? Strut might seem cheap to buy but when you take the handling, storing, transporting, cutting and deburring costs and installation time into account, it is actually more expensive than our ready-to-use, out-of-the-box TSR solutions.

## IS THE TSR1220 COMPLIANT WITH THE BUY AMERICAN ACT?

Yes, all 4 types of TSR1220 are compliant with the Buy American Act: TSR1220N, TSR1220 & TSR122025, TSR1220R and TSR122038RL.



TSR1220N



TSR1220 & TSR122025



TSR1220R



TSR122038RL

## CAN THE TSR1220 BE SUPPORTED WITH CABLE?



Yes, the [nVent CADDY Speed Link SLS3 Locking Device](#) is compatible with the [TSR1220N](#) version. In order to make this even simpler for contractors we created a specific part number with everything you need in it: [TSR1220SLS3](#).

The hook end-fitting crimped on the cable allows contractors to fix it on pretty much any type of structures (loop it around an I-Beam, hook it to concrete [fixing eyebolt screw](#) or any other type of nVent CADDY Fasteners with a hole).



Our powerful portfolio of brands:

**CADDY ERICO HOFFMAN RAYCHEM SCHROFF TRACER**