



**CONNECT AND PROTECT**

# nVent CADDY In-Wall Solutions

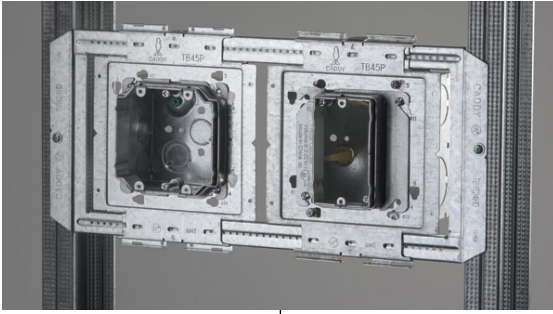
nVent CADDY has the electrical fixing and fastening and in-wall product solutions for your job.

  
**nVent**



**CADDY**

# Customer-Inspired Solutions



nVent CADDY's team of experts take the time to create solutions with the customer and their challenges in mind, as well as current trends. Hours of research, product development and engineering goes into nVent CADDY products to help solve for several barriers in the electrical and in-wall markets.

Ask for nVent CADDY products to help overcome the following obstacles:



**BUILDING CODE REQUIREMENTS**



**PROJECT TIMELINE CHALLENGES**



**SKILLED WORKER SHORTAGE**



**FIRE AND LIFE SAFETY**



**CRITICAL BUILDING AND EQUIPMENT PROTECTION**

nVent CADDY products solve for these challenges and more, while being engineered to be:



## SAFE

nVent CADDY products are designed to have several tool-free components for a **safer install with less tools needed**. Products can also be prefabricated, moving a significant amount of work previously completed on lifts and ladders to ground level, greatly **reducing the risk of injury**.



## FAST

nVent CADDY in-wall products are designed to **reduce the amount of total installation time** and the **total installed cost**. nVent CADDY products install quicker than the traditional counterpart and make it easy to prefabricate complex assemblies on the ground or offsite.

**Limit rework after installation and meet jobsite deadlines** using innovative nVent CADDY products.



## EASY

nVent CADDY products make installation easier by **eliminating steps in the process** to save time overall. nVent CADDY products are designed to have **fewer parts, secure hardware and require fewer tools**.

The benefits of individual products are multiplied when used together as a system solution.

Products to fit most applications including:

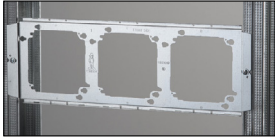
**ELECTRICAL • DATACOM • FIRE SPRINKLER • MECHANICAL  
HVAC • PLUMBING • ROOFTOP • SEISMIC BRACING**

# Between Stud Box Mounting Brackets



Full range of innovative, time-saving, easy-to-install box support mounting brackets for metal and wood studs.

## BOX SUPPORT



### RBS16/RBS16HD and RBS24/RBS24HD

- Provides superior support for 4" and 4 11/16" boxes in both regular and deep depth boxes
- Accepts mud rings without boxes for data ring and string installations

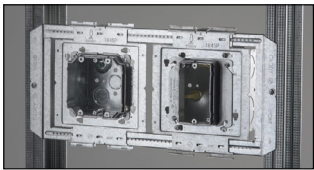
- Heavy duty (HD) design with increased strength that is twice as strong than the first generation rigid box support
- Designed to work with snap in place first means of support for conduit and cables



### TSRBS1625

- Adjustable for 16" and 24" stud widths to allow for box placement anywhere within stud cavity
- For use with 4" square and 4-11/16" boxes and mud rings
- Open design allows for a variety of positions for box location, and to easily adjustable after box is installed

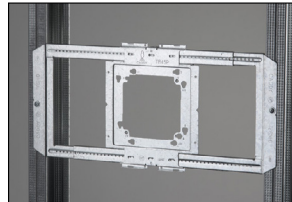
## HEAVY DUTY TELESCOPING BRACKET



- Innovative design allows boxes to be added or removed without removing bracket from studs
- Attach boxes quickly and easily with snap-on box mounting plates (sold separately)

- Box mounting plates can be securely snapped in any position along fully extended bracket
- Rigid design eliminates need for far-side support
- Ready to use out of the box, saving installation time and labor
- Works with wood or metal studs

## BOX MOUNTING PLATE + BOX MOUNTING PLATE WITH FAR SIDE SUPPORT

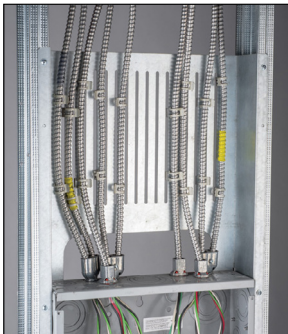


- Snap-on installation (vertically or horizontally, single and double gang adjustable mud rings) to Heavy Duty Telescoping Bracket allows for easy positioning along bracket

- Can also be mounted directly to metal or wood studs
- Key holes provide ease of installation and positive location when mounting boxes

- Extruded holes allow mounting of mud rings for both power and data applications
- TB45PK innovative far side support allows bracket to be installed on virtually any stud depth and up to 3" wide studs

## BETWEEN STUD PANEL MOUNTING BRACKET



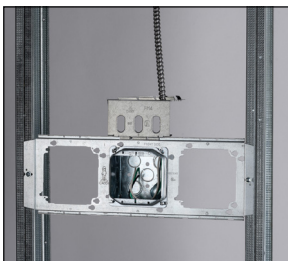
- Panel bracket attaches to panel box providing a rigid surface to quickly and easily secure flexible conduit
- Ideal for contractors wanting to pre-fab panel boxes, fasten and protect cables during assembly, shipping, and installation
- Makes installing panel box between studs easier saving time and labor
- Can be used in combination with MC/AC Cable to Metal Stud Clip to securely attach 14-2 to 12-3 MC/AC size cables creating a tool free attachment process

## FLAT RIGID BOX SUPPORT



- Created from one single piece of steel with no offset resulting in a completely flat bracket
- Accepts any mud ring shape in either vertical or horizontal orientation
- Extruded holes allow mounting of mud rings for both power and data applications
- Stamped with A- and B-side markings that allow mounting for all box types and configurations – no need for removal of screws – simply flip and it's ready to use

## FIRST MEANS OF SECUREMENT FOR HEAVY DUTY BOX BRACKET



- Provides first means of securement for MC/AC and EMT conduit
- Works with Heavy Duty Rigid Box Support and Heavy Duty Telescoping Bracket, 4" and 4 11/16" box
- Snaps into channel and locks into place without screws
- Rigid locking tab securely locks into place when closed and opens for easy conduit placement

### Product Catalog

#### [Between Stud Box Mounting Brackets](#)

#### Products included in this offering:

[Rigid Box Support \(RBS16, RBS24\)](#)

[Heavy Duty Rigid Box Support \(RBS16HD, RBS24HD\)](#)

[Telescoping Rigid Box Support \(TSRBS1625\)](#)

[Heavy Duty Telescoping Bracket \(TB1624HD\)](#)

[Box Mounting Plate \(TB45P\)](#)

[Box Mounting Plate with Far Side Support \(TB45PK\)](#)

[Between Stud Panel Mounting Bracket \(PB16\)](#)

[First Means of Securement for Heavy Duty Box Bracket \(FM4\)](#)

[First Means of Securement for Heavy Duty Box Bracket \(FM411\)](#)

[Flat Rigid Box Support \(FB16\)](#)

# nVent CADDY Single Box-to-Stud Solutions



SAFE



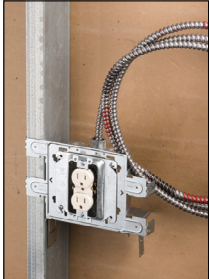
FAST



EASY

nVent CADDY's full line of stud-mounted brackets make installation fast and easy, saving time and increasing productivity on the job. Learn more about the options you have for any job.

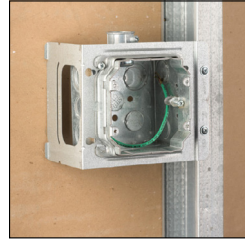
## SNAP TO STUD ELECTRICAL BOX BRACKET



- Snap to stud function makes installation fast and easy, saving time and increasing productivity
- Self-leveling feature ensures the electrical box is always square to the stud, for a consistent and professional installation
- Mounts to either side of the stud and can be mounted side by side on the same stud, and accommodates all stud depths
- Works with standard or adjustable single and double gang mud rings

- Rigid design delivers consistency and quality during the trim out phase and additional mounting tabs allow the bracket to be secured to the front and inside face of the stud for extra stability

## C SERIES ELECTRICAL BOX BRACKET TO STUD



- Replaces H-Brackets with improved design
- Thicker steel to significantly increase rigidity and help prevent box movement and trim out issues
- Works with both standard and adjustable single and double gang mud rings
- Mounts plaster rings for low voltage applications
- Additional bend points on C4 and C6 brackets for greater versatility

### Product Catalog

[nVent CADDY Stud-Mounted Bracket Solutions](#)

Products included in this offering:

[Snap to Stud Electrical Box Bracket \(STS2346\)](#)

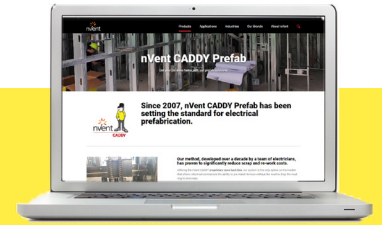
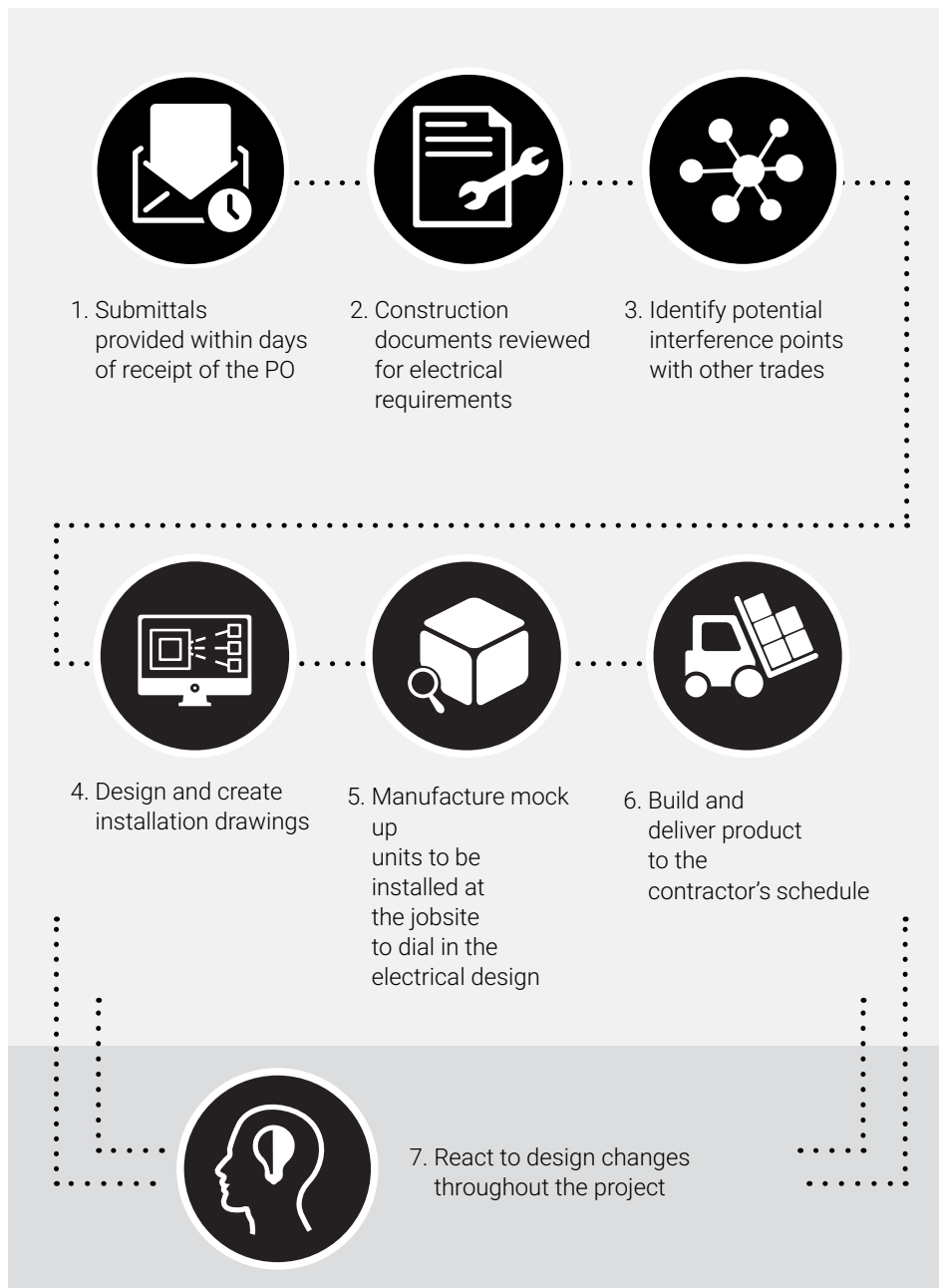
[C Series Electrical Box Bracket to Stud \(C23, C4, C6\)](#)

# nVent CADDY Prefabricated Solutions

Our method, developed over a decade by a team of electricians, has proven to significantly reduce scrap and re-work costs. Utilizing the nVent CADDY proprietary open back box, our system is the only option on the market that allows electrical contractors the ability to pre-install devices without the need to drop the mud ring to terminate.

Meet the challenging schedule demands in today's construction environment by trusting the team with more than 600 successful complete projects. Our method has proven to significantly reduce scrap and rework costs, while reducing or eliminating pre-construction costs, excess inventory of components and sourcing related issues of spot buying and partial shipments.

Our team of experienced electricians (a team with a combined 100+ years of experience) will be assigned to manage your project from start to finish.



## WANT TO LEARN MORE?

To view the entire nVent CADDY Prefabricated Solutions offering, visit [prefab.nvent.com](http://prefab.nvent.com)



**90% COMPLETE**  
upon arrival



**ONE SUPPLIER**  
for material purchasing  
and tracking



**SCHEDULED RELEASE**  
of product to streamline  
your worksite



**REDUCE SCRAP**  
of wire & cable

# nVent CADDY Prefabricated Solutions



From simple assemblies to complex systems, our team can do it all. The in-wall prefab solutions below are customizable to work best for your project.

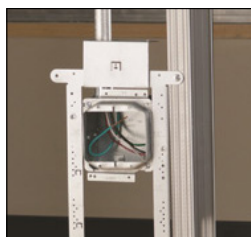
## NVENT CADDY ALL-IN-ONE STUD-MOUNTED ASSEMBLIES



- Complete assembly that is ready to use right out of the box and installs with just two screws
- Open-back design offers faster and easier access to install conduit connectors or wiring
- Mounts to either side of the stud
- Repositions to other stud side without redoing knockouts or rotating devices
- Versatile back plate functions as rigid far-side support or additional stud attachment

- Assembly mounts tight to stud, making it easier to pull and install wiring
- Available in single- or double-gang
- Made in the USA

## NVENT CADDY ALL-IN-ONE FLOOR-MOUNTED ASSEMBLIES



- Complete assembly that is ready to use right out of the box and installs with just two screws
- Open-back design offers faster and easier access to install conduit connectors or wiring
- Provides versatile positioning - independent of wall stud location
- Integrated first means of support accepts conduit or MC/AC cable

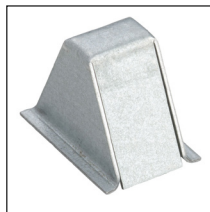
- Rigid back plate functions as a far-side support and is resistant to bending
- Finder tab helps locate electrical box behind drywall
- Mounts inside (use mounting tabs) or under floor track
- Available in single- or double-gang
- Made in the USA

## NVENT CADDY PROTECTOR PLATE



- Protects electrical devices during drywall installation
- Gangable
- Use with Switch Protector Plate Insert (sold separately) to protect toggle switches

## NVENT CADDY SWITCH PROTECTOR PLATE INSERT



- For use with Protector Plate to protect toggle switches during drywall installation

## NVENT CADDY ALL-IN-ONE BETWEEN-STUD ASSEMBLIES



- Complete assembly that is ready to use right out of the box and installs with just two screws
- Box moves side-to-side for exact positioning
- Open-back design offers faster and easier access to install conduit connectors or wiring
- Telescoping bracket accommodates up to three boxes

- Rigid back plate functions as a far-side support and is resistant to bending
- Available in single- or double-gang
- Made in the USA

## NVENT CADDY ADJUSTABLE MUD RING



- Adjustable mud ring accommodates various thicknesses of drywall
- Can be adjusted after the installation of drywall

### Product Catalog

[nVent CADDY All-in-One Stud-Mounted Assemblies](#)  
available with removable mud ring, with adjustable mud ring or without mud ring

[nVent CADDY All-in-One Between-Stud Assemblies](#)  
available with removable mud ring for single or multi-box, with adjustable mud ring for single or multi-box or without mud ring for single or multi-box

[nVent CADDY All-in-One Between Stud Bracket \(A1B1624, A1B1624SP250\)](#)

[nVent CADDY All-in-One Floor-Mounted Assemblies](#)  
(available with removable mud ring, with adjustable mud ring, without mud ring or mounted bracket)

[Adapter Plate \(TBSBA4\)](#)

[Adjustable Mud Ring \(AMR1020SG, AMR1224SG, AMR1024DG, AMR1224TG\)](#)

[nVent CADDY Protector Plate](#)

[nVent CADDY Switch Protector Plate Insert](#)

# Screw Gun Brackets and Raceway Supports



Full line of fixed and telescoping screw gun brackets including time saving accessories.

## SNAP TO STUD TELESCOPING SCREW GUN BOX BRACKET



### TSGB1624S

- Snap to stud function makes installation fast and easy, saving time and increasing productivity
- Self-leveling feature ensures the bracket is always square to the stud, for a consistent and professional installation

- Pre-configured for 2-1/8" deep boxes and only a simple adjustment needed for 1-1/2" deep boxes, can mount multiple boxes
- Requires only two screws to install

## CABLE SUPPORT



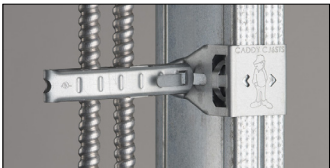
- Easy-to-use locking tab
- Cable locating ribs to maintain cable separation
- Flared edges for cable protection
- NEC® 300.4D applicable
- For wood or metal stud

## MULTIPLE CONDUIT SUPPORT



- Use with screw gun brackets to support conduit between studs
- Use with Footed Box Support for conduits in concrete pours
- Eliminates offset bending of conduit

## SNAP TO STUD CABLE SUPPORT



- Snap to stud function makes installation fast and easy, saving time and increasing productivity
- No tools or fasteners needed for installation
- Easy-to-use locking tab

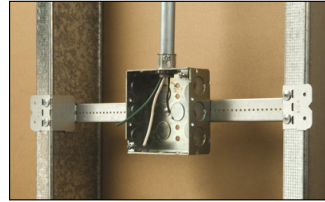
- Cable locating ribs to maintain cable separation
- Flared edges for cable protection

## STUD SPANNER BAR



- Secures EMT, MC/AC, and flexible conduit between metal studs
- Innovative clip securely attaches to metal studs in pre-punched holes
- Roll-formed bar for increased strength and rigidity
- Use with Cable/Conduit Clip to secure conduit and cable to bar
- Adjustable for non-standard stud spacing
- No tools required for installation

## TELESCOPING SCREW GUN BRACKET



### TSGB16/TSGB1624/TSGB24

- Can mount multiple boxes and can be mounted to face or inside of stud
- Improved design with stamped inch markings and pilot holes accelerates precise box conduit mounting between studs

- Pilot holes allow easy box attachment with a screwdriver, requires only a screw gun to install
- Adjustable for non-standard stud spacing
- Interlocking tab prevents accidental disassembly
- Unique, one-piece, break apart design
- Reduces movement of the box when used with flexible conduit, ENT, MC, AC or non-metallic sheathed cable

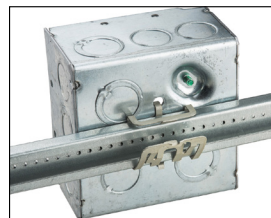
## CABLE/CONDUIT TO STUD ATTACHMENT



- Accommodates EMT conduit and MC/AC cable
- Easily locate the fastener on the stud, keeping your conduit in line with box knock out and H-series brackets
- For wood or metal stud

- Eliminates offset bending of conduit
- Compliant with NEC® Article 358.30(A),
- Compliant with CEC Rule 12-1404
- Compliant with CEC Rule 12-618

## nVENT CADDY GLIDER ELECTRICAL BOX ATTACHMENT



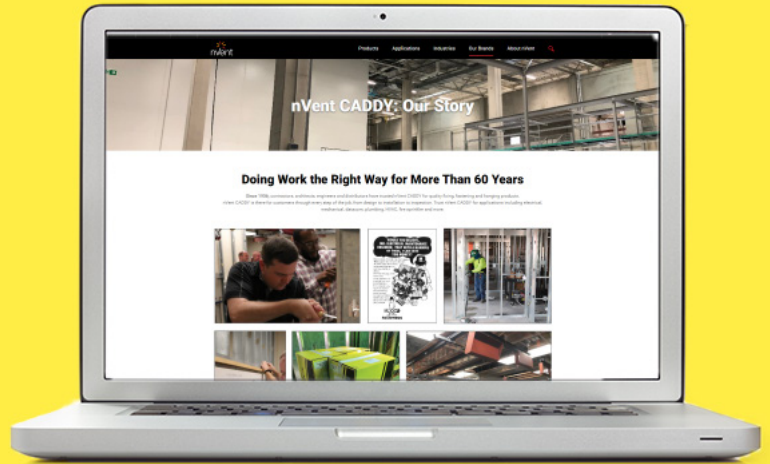
- Secures electrical boxes to the TSGB without tools or screws
- Innovative design securely clips onto electrical box eliminating attachment screw
- Electrical boxes can be easily positioned along TSGB
- Ideal for pre-fab assemblies

### Product Catalog

- [Snap to Stud Telescoping Screw Gun Box Bracket \(TSGB1624S\)](#)
- [Telescoping Screw Gun Bracket \(TSGB16, TSGB1624, TSGB24\)](#)
- [Screw Gun Bracket \(SGB16A, SGB24A\)](#)
- [nVent CADDY Glider Electrical Box Attachment \(TSGLDR2\)](#)
- [Multiple Conduit Support \(CCS812\)](#)
- [Electrical Box Mounting Strap \(TEBS1624\)](#)
- [Stud Spanner Bar \(BG16, BG24\)](#)
- [Cable Support \(CJ6\)](#)
- [Cable Support with Standoff \(CJ6S\)](#)
- [Snap to Stud Cable Support \(CJ6STS\)](#)
- [CS812 Cable/Conduit to Stud Attachment \(CS812\)](#)



Since 1956, contractors have relied on the premium quality and ease of use of nVent CADDY products – an innovative and complete range of solutions.



## GET TO KNOW NVENT CADDY.

Visit our brand story landing page to learn about our history, offerings, products and more!

**GO NOW ▶**

Ready to get started?

Get in touch with an nVent CADDY Sales Representative today!

Your nVent CADDY Sales Rep:

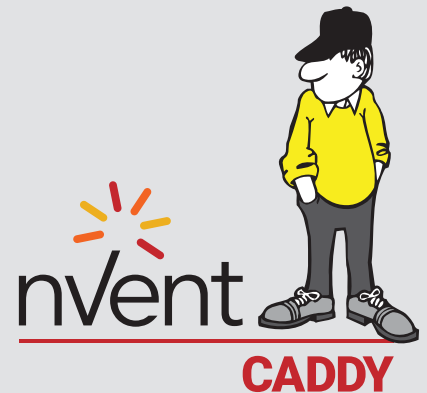
Name:

Phone:

E-mail:



Find us on LinkedIn



Our powerful portfolio of brands:

**CADDY ERICO HOFFMAN RAYCHEM SCHROFF TRACER**