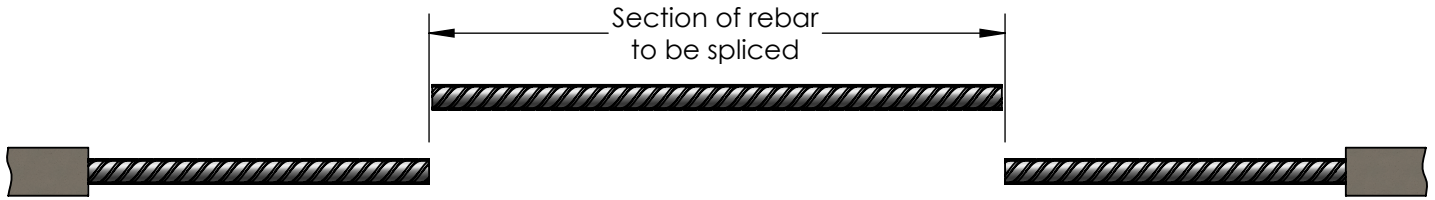
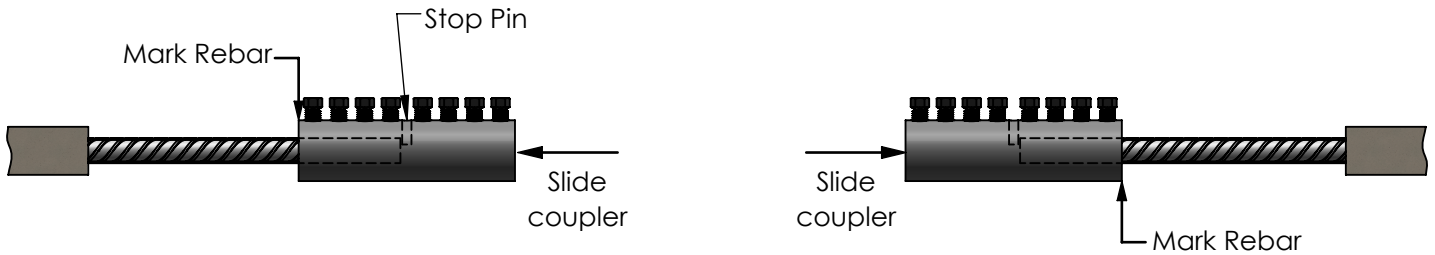


nVent LENTON Connect Closure Pour Splices

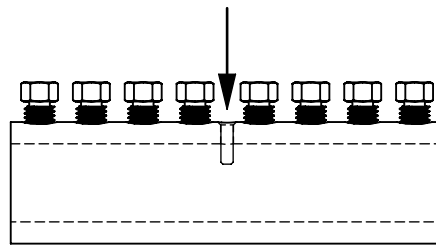
Read all instructions and procedures. Ensure nVent LENTON Connect is sized properly per project plans. Refer to product instruction sheet for coupler installation procedure details. Additional copies of instructions and application information are available at www.nVent.com



Step 1: Slide the coupler onto each rebar end until the rebar touches the stop pin. Mark the rebar to ensure proper coupler/rebar engagement.



Step 2: To allow rebar to pass entirely through the coupler, remove the stop pin by pushing the pin into the inside diameter of sleeve. Discard the stop pin.



Push pin in and through center of coupler

WARNING:

1. nVent products shall be installed and used only as indicated in nVent product instruction sheets and training materials. Instruction sheets are available at www.nVent.com and from your nVent customer service representative.
2. nVent products must never be used for a purpose other than the purpose for which they were designed or in a manner that exceeds specified load ratings.
3. All instructions must be completely followed to ensure proper and safe installation and performance.
4. Improper installation, misuse, misapplication or other failure to completely follow nVent's instructions and warnings may cause product malfunction, property damage, serious bodily injury and/or death, and void your warranty.

The customer is responsible for:

- a. Conformance to all governing codes.
- b. The integrity of structures to which the products are attached, including their capability of safely accepting the loads imposed, as evaluated by a qualified engineer.
- c. Using appropriate industry standard hardware as noted above.

SAFETY INSTRUCTIONS:

All governing codes and regulations and those required by the job site must be observed. Always use appropriate safety equipment such as eye protection, hard hat, and gloves as appropriate to the application.

nVent, nVent CADDY, nVent ERICO Cadweld, nVent ERICO Critec, nVent ERICO, nVent ERIFLEX, and nVent LENTON are registered trademarks of nVent or its global affiliates. All other trademarks are the property of their respective owners. nVent reserves the right to change specifications without prior notice.

OPTION A

Step 3A: Allow rebar to pass entirely through the coupler and align the rebar.

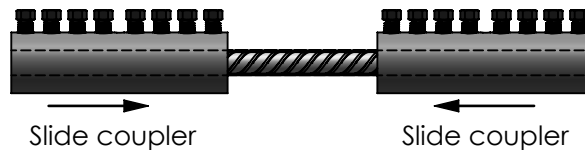


Step 4A: Slide coupler into position. Center coupler ensuring rebar marks (completed in step 1) line up correctly.

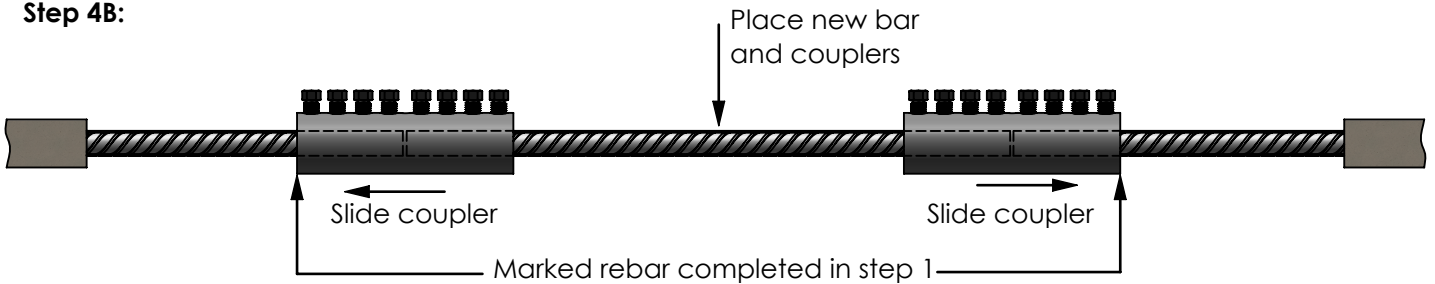


OPTION B

Step 3B:



Step 4B:



Step 5: Tighten bolts per product instruction sheet IP8515.



nVent, nVent CADDY, nVent ERICO Cadweld, nVent ERICO Critec, nVent ERICO, nVent ERIFLEX, and nVent LENTON are registered trademarks of nVent or its global affiliates. All other trademarks are the property of their respective owners. nVent reserves the right to change specifications without prior notice.