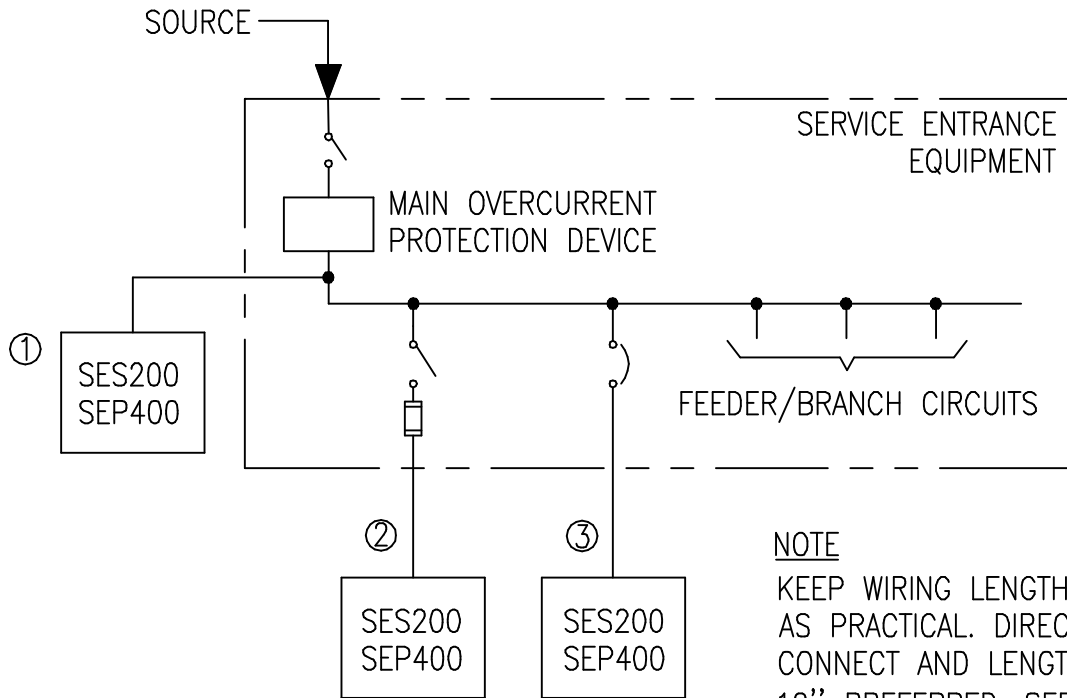


SEP400 / SES200 CONNECTION OPTIONS



NOTE

KEEP WIRING LENGTH AS SHORT AS PRACTICAL. DIRECT NIPPLE CONNECT AND LENGTH UNDER 12" PREFERRED. SEE TABLE 1.

TVSS CONNECTION OPTIONS

- ① TAP CONNECTION – CONNECT TO MAIN BUS BARS AFTER MAIN OCPD (LOAD SIDE). NEC 240-21 APPLIES.
- ② FUSE – CONNECT TO FIRST FUSE POSITION. SEE TABLE 2.
- ③ CIRCUIT BREAKER – CONNECT TO FIRST CIRCUIT BREAKER POSITION. SEE TABLE 2.

WIRING SIZES PER UL/NEC	
SEP400	#10 TO #3
SES200	#12 TO #2
SES160	#14 TO #8

TABLE 1.

RECOMMENDED OVERCURRENT PROTECTION RATING				
LINE/NEUTRAL CONDUCTOR SIZE (AWG)	SEP400	SES200	SES160	GROUNDING CONDUCTOR SIZE (AWG)
#2		90A		#8
#3	80A	80A		#8
#4	70A	70A		#8
#6	50A	50A		#10
#8	40A	40A	40A	#10
#10	30A	30A	30A	#10
#12		20A	20A	#12
#14			15A	#14

TABLE 2.