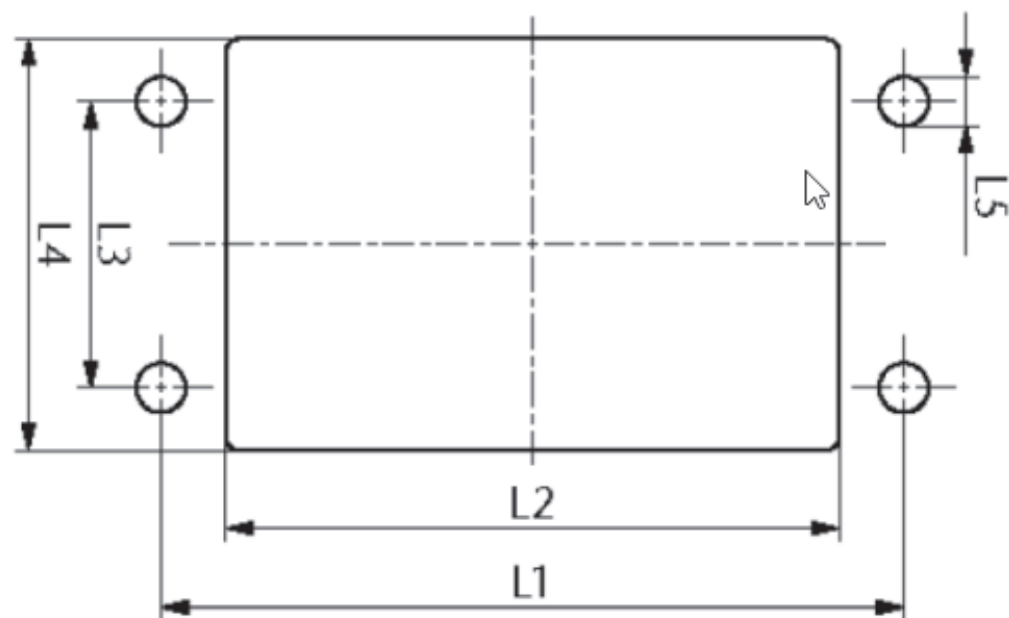




Cable Entry Systems

Cable Entry Gland Plate Connected Inside, CCFI

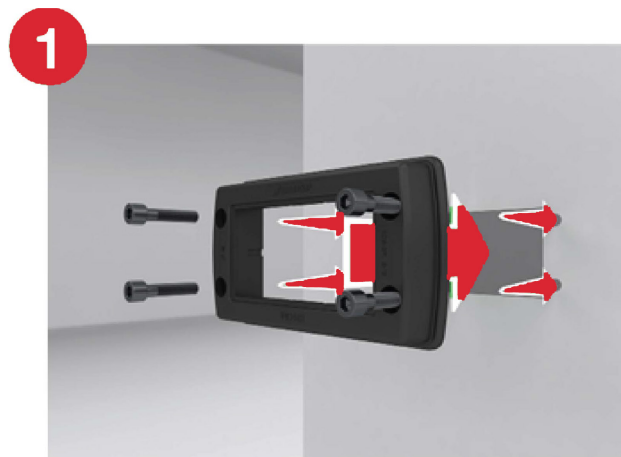


Cutout Dimensions

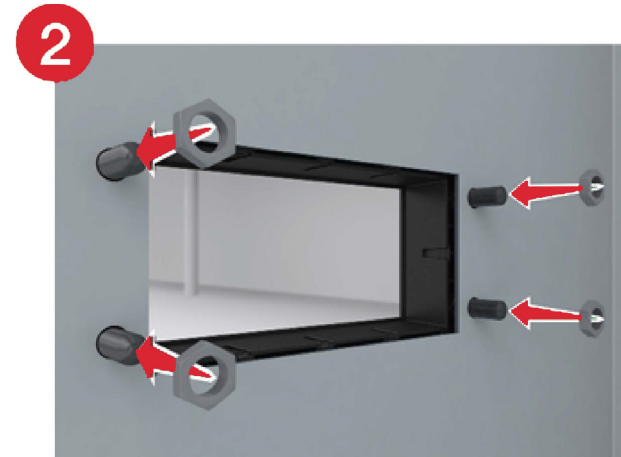
Frame	Catalog Number	L1 (mm/in.)	L2 (mm/in.)	L3 (mm/in.)	L4 (mm/in.)	L5 (mm/in.)
Inside Modular cable entry 1/4	CCFI14	58/2.28	46/1.81	32/1.26	46/1.81	5.5/.22
Inside Modular cable entry 6/10	CCFI610	83/3.27	68.5/2.70	32/1.26	46/1.81	5.5/.22
Inside Modular cable entry 8/16	CCFI816	103/4.06	91/3.58	32/1.26	46/1.81	5.5/.22
Inside Modular cable entry 10/24	CCFI1024	130/5.12	113.5/4.47	32/1.26	46/1.81	5.5/.22

Combination Options

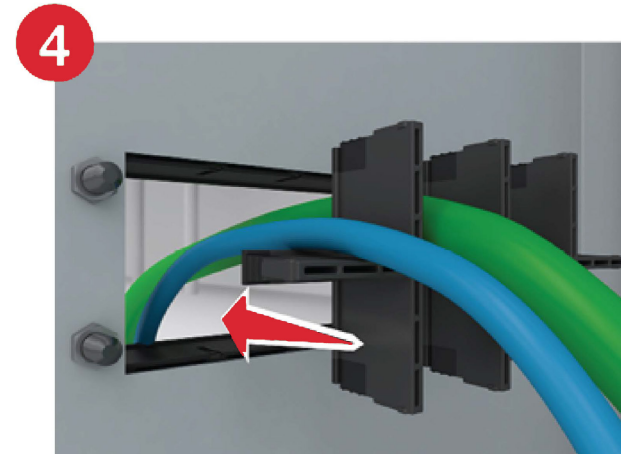
Frame	INLAY			
	1	2	4	6
	CCFD1	CCFD2	CCFD4	CCFD6
Inside Modular cable entry 1/4	x	x	x	
Inside Modular cable entry 6/10	x	x	x	x
Inside Modular cable entry 8/16	x	x	x	x
Inside Modular cable entry 10/24	x	x	x	x



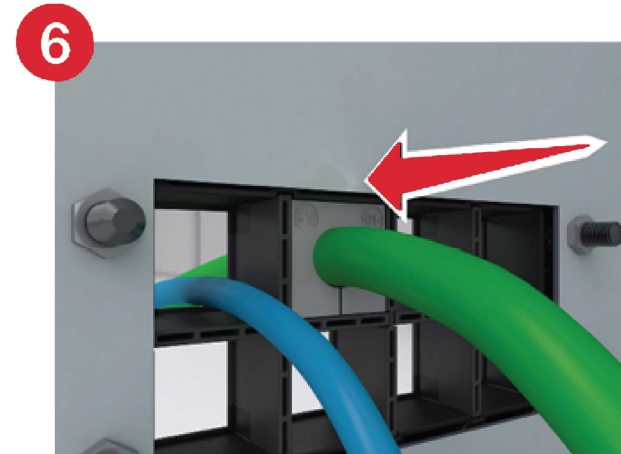
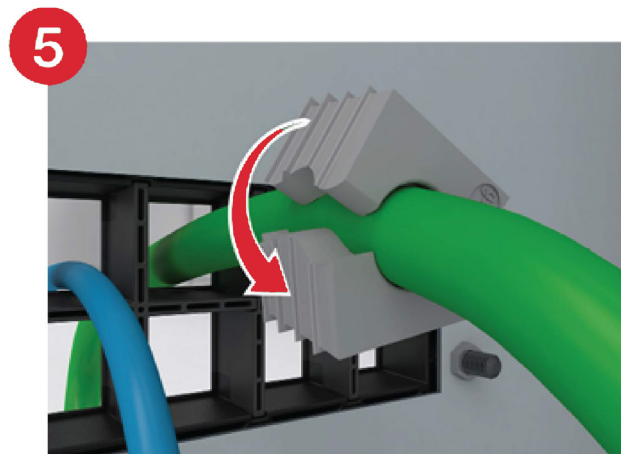
1 We recommend 4 M5 screws with length to account for 3mm thick gland plate, plus thickness of your enclosure.



2 3 Nm (26 in-lbs)



4 Click inlay into position.



6 Push seal all the way in.



According to UL Standard 508A, the following Conditions of Acceptability apply:

- Use M5 screws of stainless steel (AISI type 304 or 316)
- Max. end-use temperature for UL application is 50° C (52° F)
- Max. temperature range: -40° C to 120° C (-40° to 248° F) static