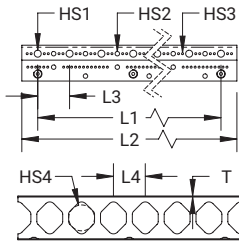
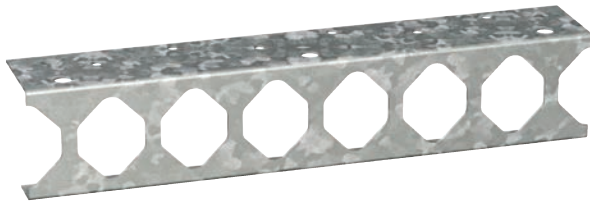


# Conduit Trapeze CCT125

## CONNECT AND PROTECT



The nVent CADDY Conduit Trapeze CCT125 range is a fast and cost-effective method to install larger branch circuits of conduit in overhead trapeze installations. The CCT125 series reduces installation time and material cost by eliminating the need for traditional fasteners, making it an ideal solution for contractors looking to maximize installation efficiency.

### FEATURES

- Ideal for larger branch circuits
- Accommodates  $\frac{3}{8}$ " and  $\frac{1}{4}$ " threaded rod trapeze drops
- Up to 25% material savings over traditional methods
- Reduces installation time up to 50%
- Complies with UL® 2239

Material: Steel | Finish: Pregalvanized  
EMT Conduit Size: 1  $\frac{1}{4}$ " | Rigid Conduit Size: 1  $\frac{1}{4}$ "



Part Number	Number of Conduits	Thickness T	Hole Size 1 HS1	Hole Size 2 HS2	Hole Size 3 HS3	Hole Size 4 HS4	Length 1 L1	Length 2 L2	Length 3 L3	Length 4 L4
CCT125X12	6	16 GA	$\frac{7}{16}$ "	$\frac{9}{32}$ "	$\frac{1}{8}$ "	1 $\frac{5}{8}$ "	12"	14"	2"	2"
CCT125X24	12	16 GA	$\frac{7}{16}$ "	$\frac{9}{32}$ "	$\frac{1}{8}$ "	1 $\frac{5}{8}$ "	24"	26"	2"	2"
CCT125X36	18	16 GA	$\frac{7}{16}$ "	$\frac{9}{32}$ "	$\frac{1}{8}$ "	1 $\frac{5}{8}$ "	36"	38"	2"	2"
CCT125X96	48	16 GA	$\frac{7}{16}$ "	$\frac{9}{32}$ "	$\frac{1}{8}$ "	1 $\frac{5}{8}$ "	96"	98"	2"	2"

### UL Load Rating

Orientation	Mounting Fastener	Fastener Spacing							
		6"	12"	18"	24"	30"	36"	42"	48"
Horizontal	$\frac{3}{8}$ " Threaded Rod	500 lb	500 lb	400 lb	300 lb	275 lb	250 lb	225 lb	200 lb
	$\frac{3}{16}$ " Shot-Fire Pin	150 lb	125 lb	100 lb	–	–	–	–	–
Vertical	$\frac{3}{8}$ " Fastener	600 lb	600 lb	–	–	–	–	–	–

### Evenly Distributed Load Rating

Horizontal	$\frac{3}{8}$ "	–	750 lb	600 lb	475 lb	425 lb	375 lb	325 lb	300 lb
------------	-----------------	---	--------	--------	--------	--------	--------	--------	--------

For  $\frac{3}{8}$ " and  $\frac{1}{4}$ " threaded rod trapeze drops, use washer or SN25 for  $\frac{1}{4}$ " threaded rod applications. The table contains maximum conduit size values.



Our powerful portfolio of brands:

**CADDY ERICO HOFFMAN RAYCHEM SCHROFF TRACER**